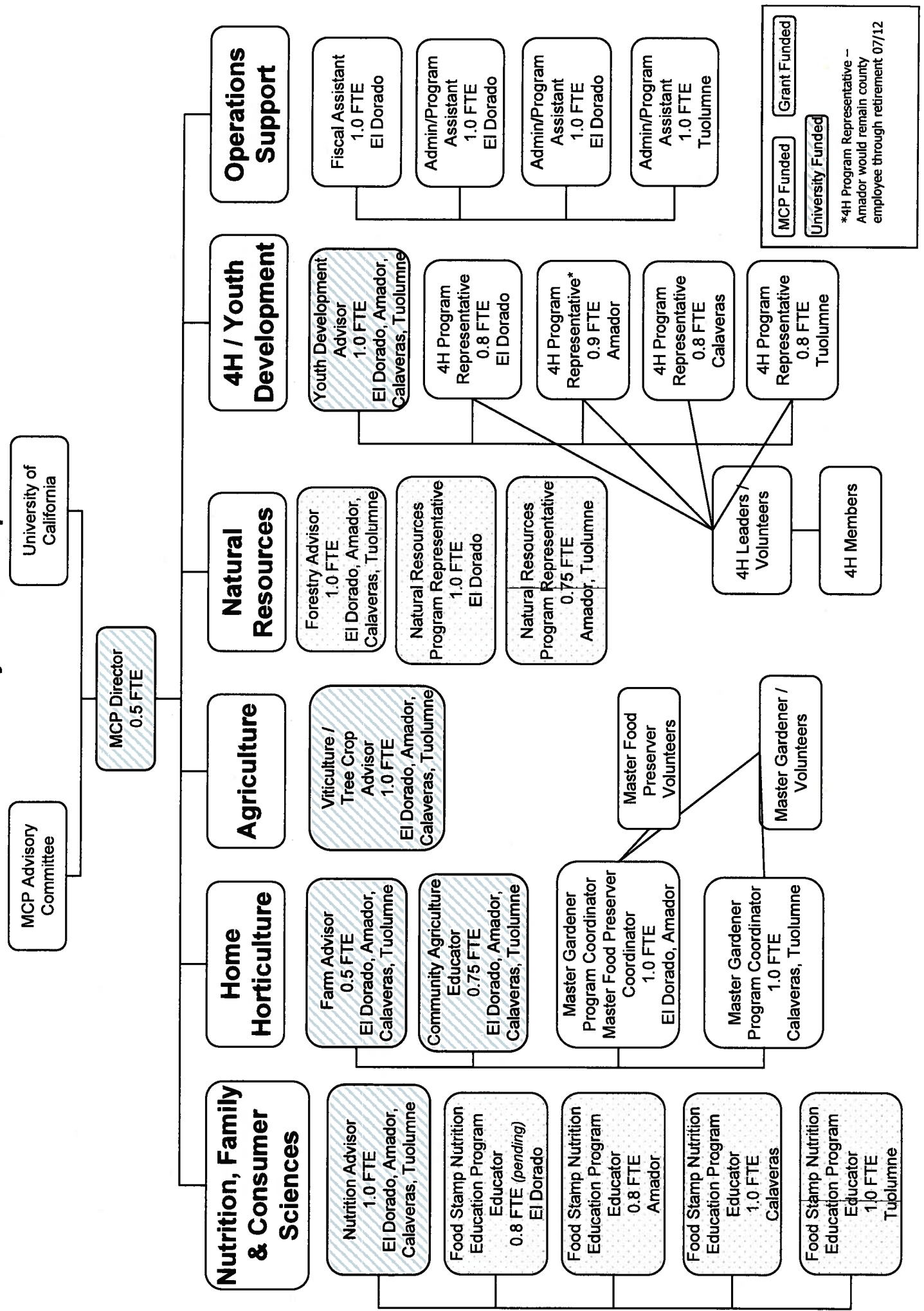


Scott Oneto #7  
6.14.11

# University of California Cooperative Extension Multi-County Partnership



MCP Funded    University Funded    Grant Funded

\*4H Program Representative -- Amador would remain county employee through retirement 07/12

Scott Oneto #7  
6.14.11

**Projected FY 11/12 Foothill CE Investment**

	Amador	Calaveras	El Dorado	Tuolumne	Total
<b>UC Investment</b>					
<b>Advisors - Salary &amp; Benefits</b> <sup>1</sup>					
UC Funds <sup>2,3</sup>	98,630	67,187	113,227	26,350	305,396
Extramural UC Funds <sup>4</sup>			83,358		83,359
Subtotal - Advisor	98,630	67,187	196,585	26,350	388,754
<b>Staff - Salary &amp; Benefits</b> <sup>1</sup>					
UC Funds <sup>2</sup>	32,175		17,455		49,630
Extramural UC Funds <sup>4</sup>	70,017	40,989	88,219	85,585	284,812
Subtotal - Staff	102,192	40,989	105,674	85,585	334,442
<b>Non Personnel</b>					
UC Funds <sup>2,5</sup>	3,750	4,300	15,100	4,550	27,700
Extramural UC Funds <sup>4,6</sup>	45,429	23,525	143,882	8,724	221,560
Subtotal - Non Personnel	49,179	27,825	158,982	13,274	249,260
<b>Total UC Investment</b>	250,001	136,001	461,241	125,209	972,457
<b>County Investment</b>					
Direct	149,633	148,554	269,857	144,783	712,834
Indirect	6,875	4,865	15,125	15,731	42,596
<b>Total County Direct and Indirect</b>	156,508	153,419	284,982	160,514	755,430
<b>Total Foothill County CE Investment</b>	<b>406,509</b>	<b>289,420</b>	<b>746,223</b>	<b>285,723</b>	<b>1,727,886</b>

<sup>1</sup> Benefits based on actual.

<sup>2</sup> Includes State, Federal Formula and Endowment funds.

<sup>3</sup> Includes Oneto - Amador (CD), El Dorado (CD) and Tuolumne; Smith - Amador, Calaveras (CD) and Tuolumne (CD); Wunderlich - Amador and El Dorado.

<sup>4</sup> Includes contracts and grants, except County MOUs.

<sup>5</sup> Includes Federal Mail, ANR Connect, Staff Development and Program Development Funds.

<sup>6</sup> Funds available for CE as of July 1, 2010, may include carryforward balances.