



**COUNTY OF EL DORADO  
DEPARTMENT OF TRANSPORTATION**

# Henningesen / Lotus Multi-Use Trail

Class 1 Trail from Henningesen Lotus Park to SR 49

---

## **PROJECT UPDATE**



*Coloma Lotus Advisory Meeting*

*November 2, 2023*



## AGENDA

- Welcome / Introductions
- Project History & Alternatives
- Project Overview
- Project “Look Ahead”
- Open Discussion







## AGENDA

- ➔ **Welcome / Introductions**
- ➔ Project History & Alternatives
- ➔ Project Overview
- ➔ Project “Look Ahead”
- ➔ Open Discussion







## AGENDA

- Welcome / Introductions
- **Project History & Alternatives**
- Project Overview
- Project “Look Ahead”
- Open Discussion







## Project History:

- ➔ Henningsen Lotus Conceptual Master Plan – June 2014
- ➔ Coloma Sustainable Community Mobility Plan – October 2019
- ➔ Active Transportation Plan – February 2020
- ➔ Henningsen/ Lotus Road Class I Multi-Use Trail
  - CMAQ Grant (2022) for Planning/Design/ROW
  - CIP Project 2022/2023
  - Public Outreach: May 2022, June 2023

facebook

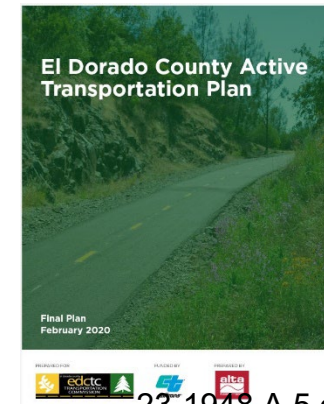
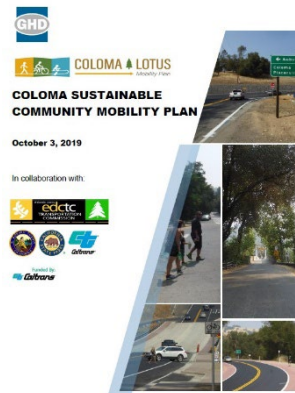
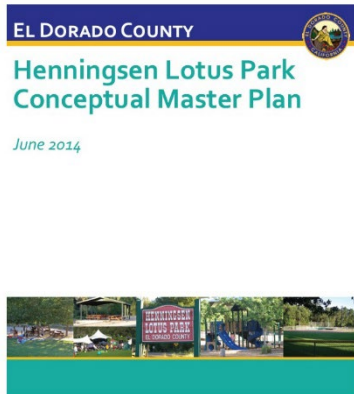
Watch Home Live Shows Explore



Mt. Murphy Bridge Town Hall at the Gold Trail Grange in Coloma. Thank you to DOT (Department of Transportation), OES (Office of Emergency...

Like Comment Share

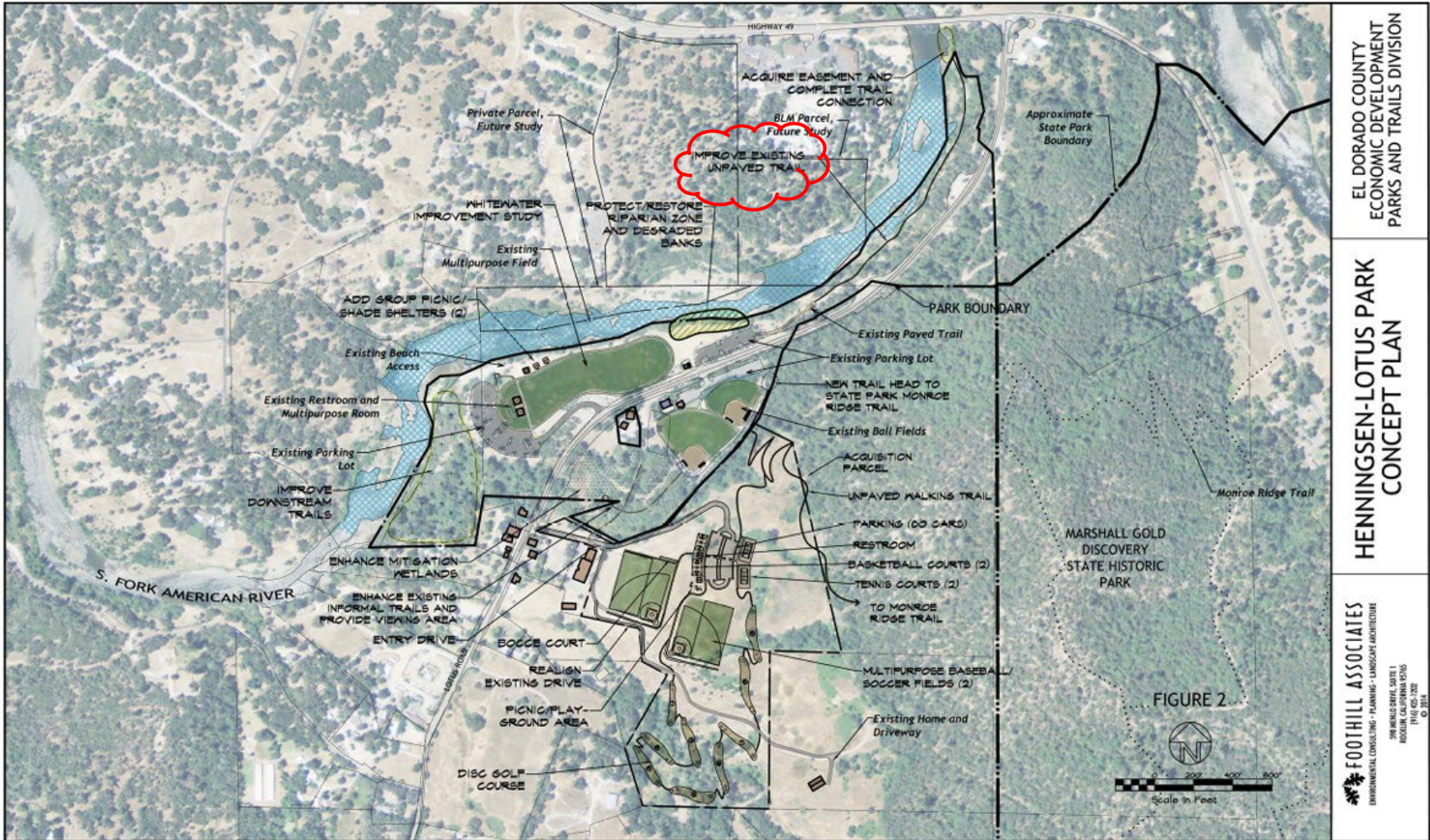
10 · 5 Comments · 512 Views





# Project History:

➔ Henningsen Lotus Park – Concept Plan (2014)



EL DORADO COUNTY  
ECONOMIC DEVELOPMENT  
PARKS AND TRAILS DIVISION

HENNINGSEN-LOTUS PARK  
CONCEPT PLAN

FOOTHILL ASSOCIATES  
ENVIRONMENTAL CONSULTING • PLANNING • LANDSCAPE ARCHITECTURE  
2700 HENNING DRIVE, SUITE 1  
ACQUEDUCT, CALIFORNIA 95626  
TEL: 916.453.9100  
© 2014

**PRELIMINARY CONCEPT**  
28-1948-A 6 of 26





## Project History:

- ↳ Henningsen Lotus Park – Concept Plan (2014)
  - ↳ Existing Unpaved Trail (Constraints):
    - ↳ Environmental Impacts
    - ↳ Steep Terrain and Topography (Rock Outcroppings)
    - ↳ Flood Plain Impacts & Considerations



### HENNINGSEN LOTUS PARK CONCEPT MASTER PLAN

time, it is of utmost importance to preserve the existing character of the park that the community loves.

#### Constraints:

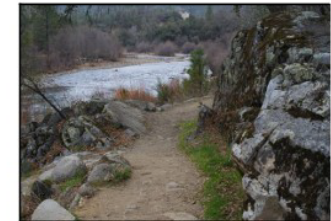
A number of factors constrain the kinds of recreational improvements that can be added to the park. Lotus Road bisects the park, separating the multi-purpose lawn, river, and beach from the children's play area and baseball/softball fields. The speed limit on Lotus Road is 45 mph, and although signed for 25 mph if children are present, traffic often moves at a brisk pace. For traffic northbound on Lotus Road, drivers may be upon the play area and crosswalk before they realize that children are using the playground, due to the existing vegetation in the mitigation area and a bend in the road.

Parking is limited, so special events that draw a large crowd may need to rent additional parking space or bus attendees from nearby lots.

Personnel are limited for staffing the park fee booth and to maintain the park, as well to enforce park regulations, so additional improvements must either include funding for additional maintenance staff, or require minimal maintenance. Funding is limited for improvements, requiring either grant sources, fees on new development within the region, or some other way to pay for the capital costs.

The natural features in the area that make HLP an attractive regional destination also require protection. Riparian vegetation is sensitive to impacts, and trail-blazing can create erosion hot-spots that degrade natural habitat and contribute silt to the river system. The river is a source of potential flooding, particularly during spring snow-melt events, and improvements need to either be located out of the 100-year floodplain, or designed to withstand inundation. A thorough understanding of river hydrology and hydraulics should be a part of the design of any improvements within the active channel and floodway.

Topography in the area presents a number of challenges. Slope and existing granitic outcrops constrain trail development in the northwest portion of the park. Topography may also preclude certain uses in the potential expansion area south of the existing ball fields. Steep banks and erosive soils constrain access to the river in a number of areas and make trail-blazing particularly destructive.



*Upstream trail with granitic outcrops*

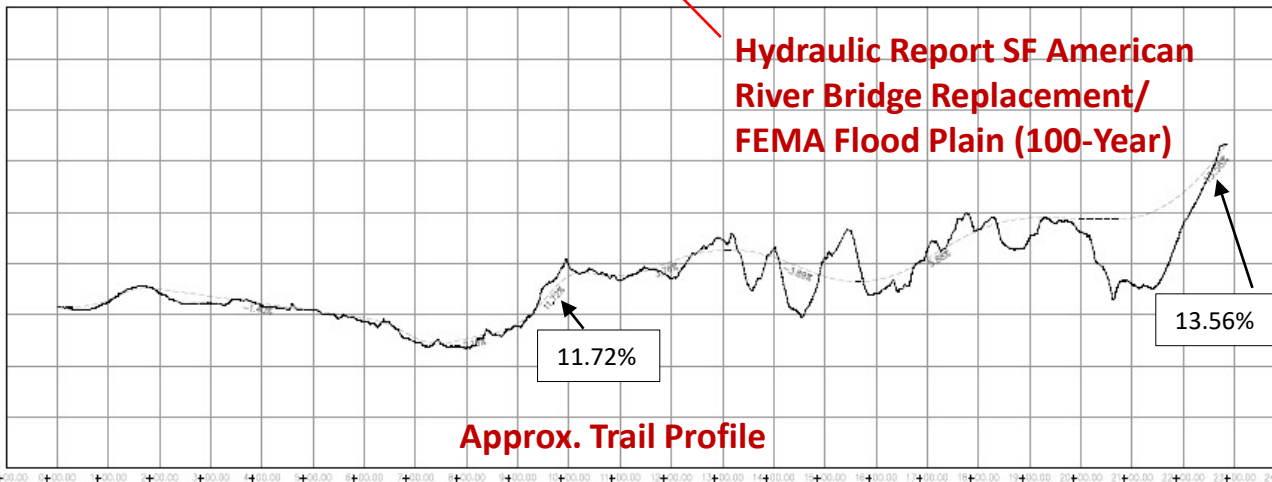
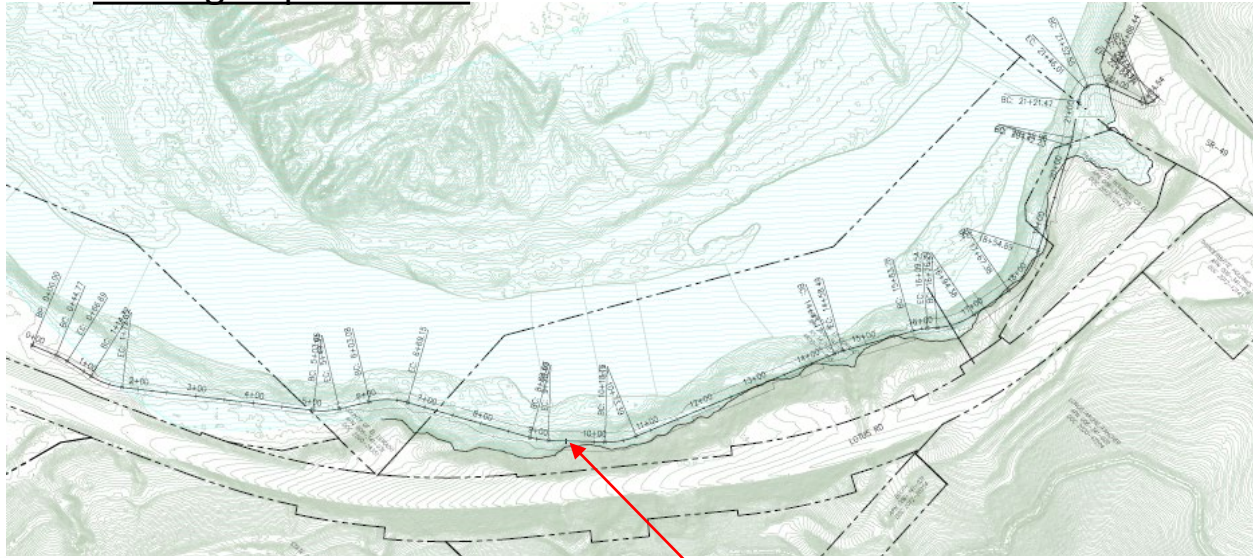
The existing utility poles within the turf area present a constraint to the types and configuration of sports that can be accommodated in that area. While undergrounding the lines is possible, it would likely require a complex and expensive process to obtain permits due to the work in the river channel.





## Project History & Alternatives:

### Existing Unpaved Trail



\*Gridlines @ 10' Vertical, 100' Horizontal

**PRELIMINARY CONCEPT**

28-11948-A-8 of 26

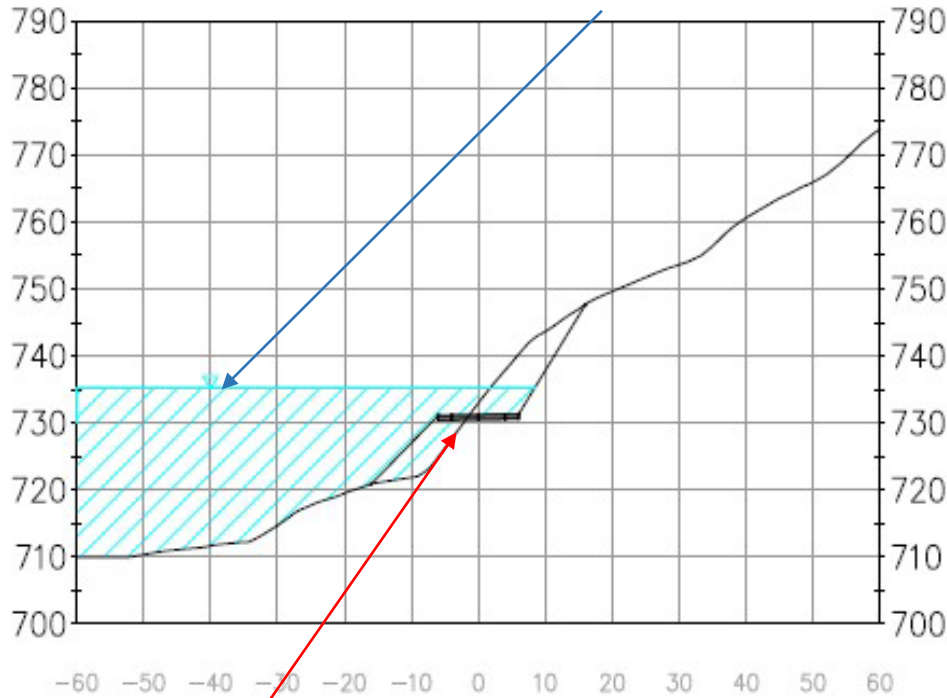




### Project History & Alternatives:

↪ Existing Unpaved Trail

\*Approx. High Water Surface



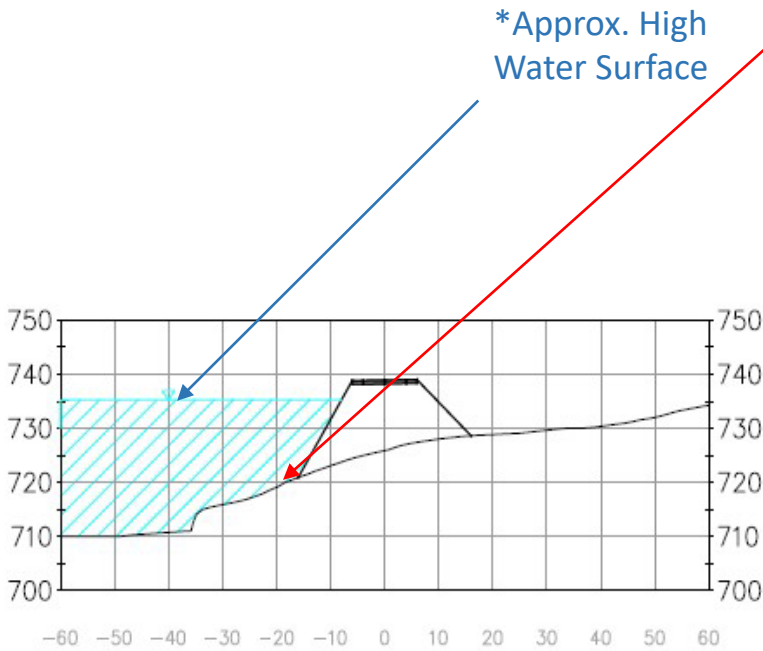
Significant Cut/Fill (in Rock Conditions & Sensitive Environmental Habitat)





## Project History & Alternatives:

### ↳ Existing Unpaved Trail



### Water Crossings & Disruptions to River Access



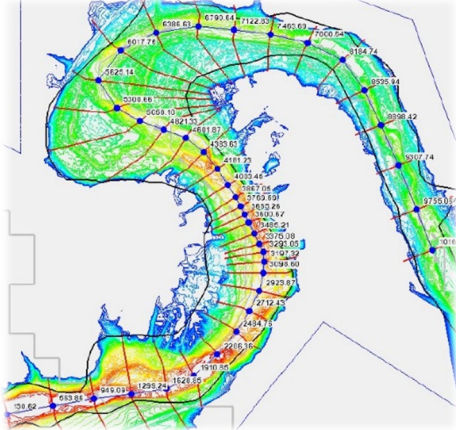
Project encroachment within a floodplain requires an “Only Practicable Alternative Finding” and that multiple state and federal agencies concur and approve.





# Project History & Alternatives:

- ↳ Existing Unpaved Trail
  - ↳ Flooding and River Considerations







## Project History & Alternatives:

### ↳ Existing Unpaved Trail:



- ↳ Significant Environmental Impacts
  - ↳ Impacts to Sensitive Habitat Areas
  - ↳ Impacts to Waterways
- ↳ Significant Grading in Rock Conditions
- ↳ Steep Terrain and Limited Trail Geometry (Line of Sight Considerations, Bicycle and ADA access, etc.)
- ↳ Significant Drainage and River Loading Conditions
- ↳ Impacts to River Access
- ↳ Right-of-Way Impacts
- ↳ Challenges to Accommodate Existing Facilities

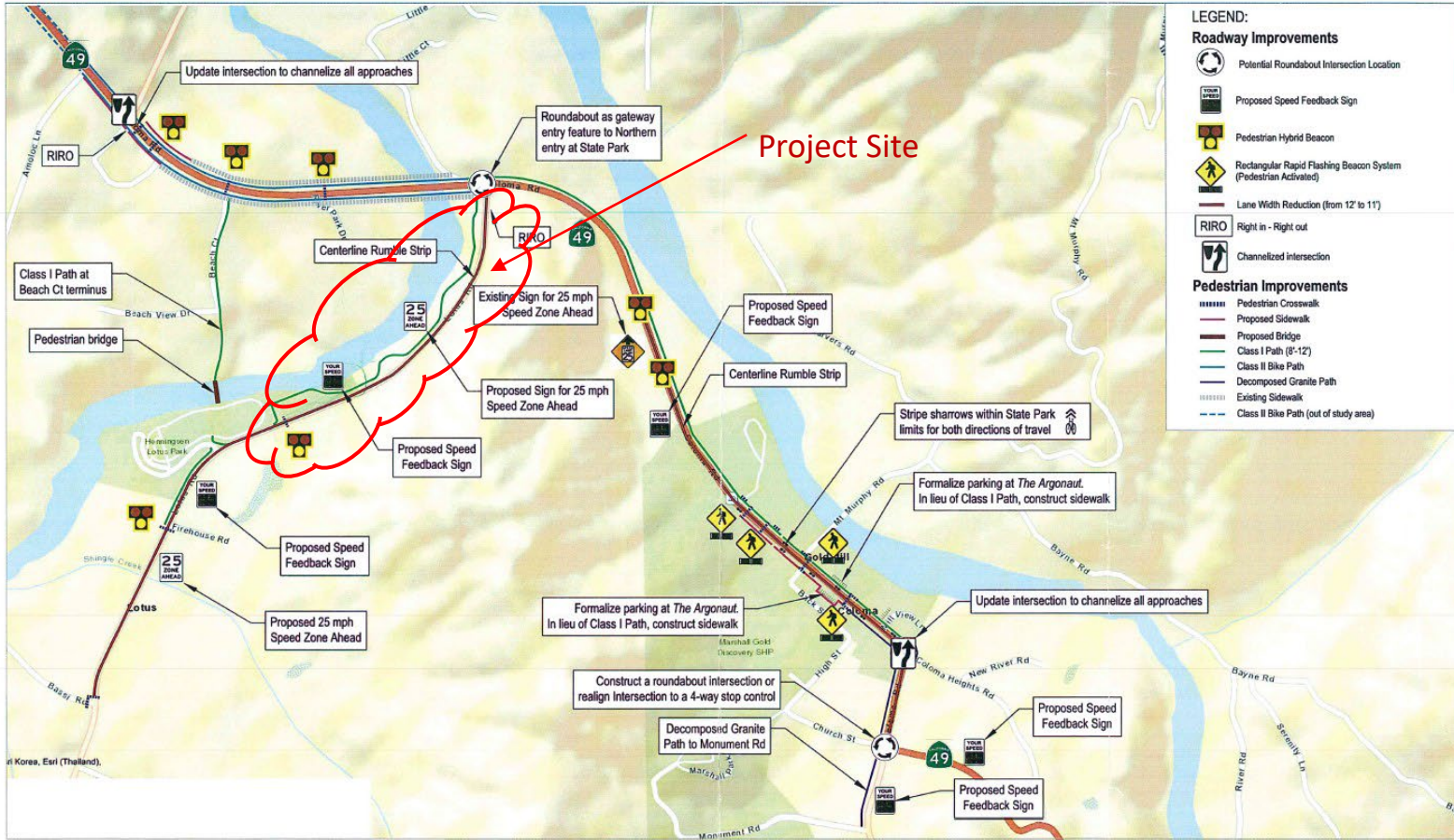
**PRELIMINARY CONCEPT**





Project History:

Coloma Lotus Mobility Plan



**GHD**

El Dorado County Transportation Commission  
Coloma Sustainable Community Mobility Plan

VICINITY MAP OF STUDY AREA IMPROVEMENTS

Project No. 11180327  
Report No. 001  
Date 06.03.19

FIGURE ES-1

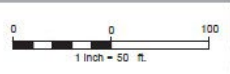
**PRELIMINARY CONCEPT**





# Project History:

## ↳ Coloma Lotus Mobility Plan



El Dorado County Transportation Commission  
Coloma Sustainable Community  
Mobility Plan  
MAP OF PROPOSED IMPROVEMENTS:  
LOTUS ROAD (Figure Map 17)

Project No. 11180327  
Report No. 001  
Date: 06.03.19  
FIGURE 8.19





## Project History:

### ➔ Active Transportation Plan

#### COOL, COLOMA, COLD SPRINGS, AND LOTUS BICYCLE FACILITIES

#### Map 2

#### EL DORADO COUNTY ACTIVE TRANSPORTATION PLAN

#### Proposed Improvements

- Spot Improvement
- Class I Shared Use Path
- Class II Bicycle Lane
- Class III Bicycle Route

#### Activity Generators

- Trailhead
- Grocery Store
- School

#### Existing Bikeways

- Class I Shared-Use Path
- Class II Bicycle Lane

#### Destinations + Boundaries

- Park
- Water
- Community Region

Maps intended for planning purposes only. Proposed improvements are not intended for route planning or navigation.

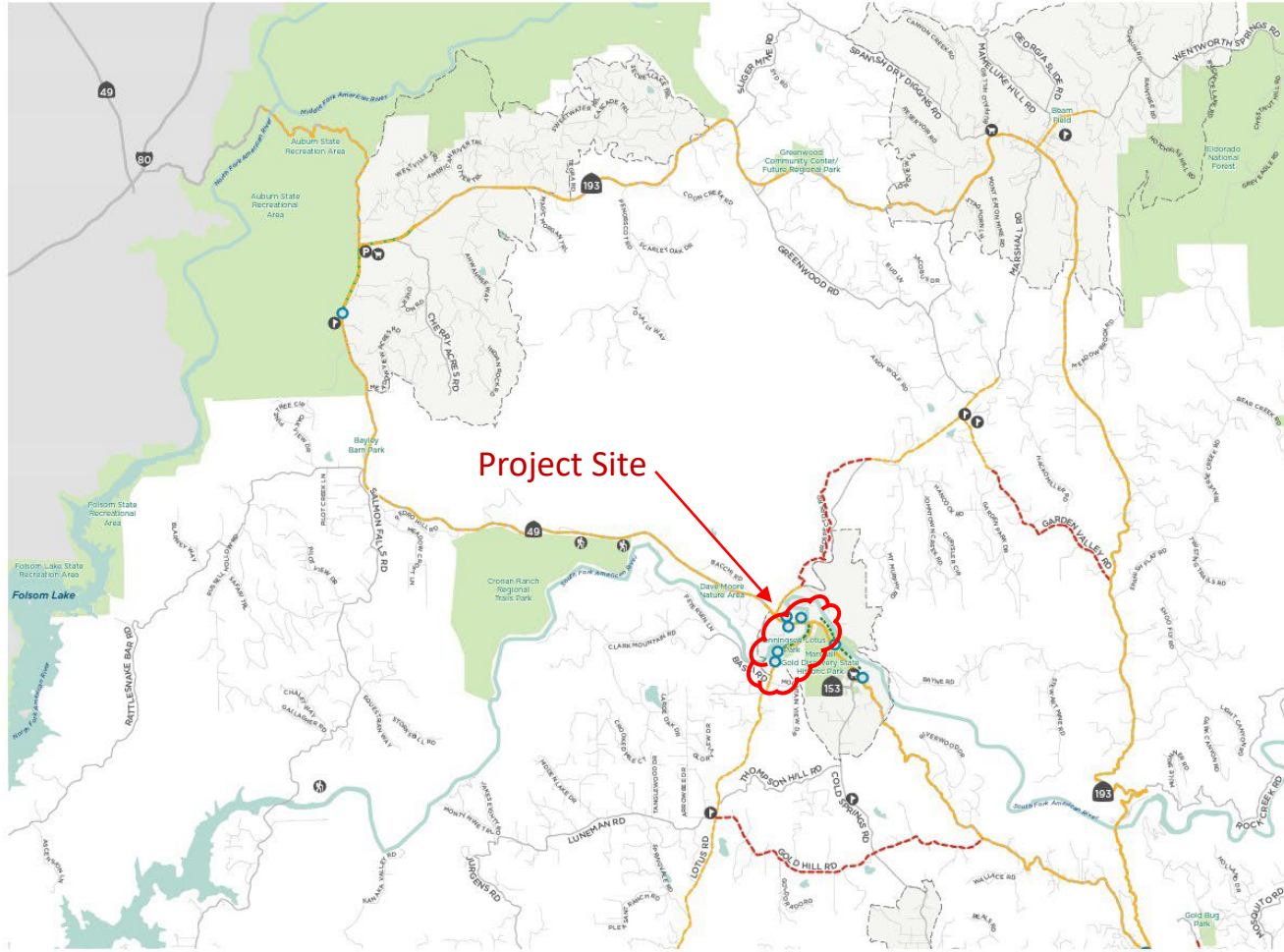
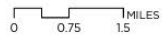


Figure 7-4: Cool, Coloma, Cold Springs, and Lotus Proposed Bicycle Facilities



## Project History & Alternatives:

- ➔ Class I Multi-Use Trail (Near Lotus Road)
  - ➔ Coincides with Existing Facilities (Ties into nature trails, parking areas, bicycle user needs, pedestrian needs)
  - ➔ Minimizes Environmental Impacts
  - ➔ Utilizes County Right-of-Way
  - ➔ Consistent Prior Studies



**PRELIMINARY CONCEPT**





## AGENDA

- Welcome / Introductions
- Project History & Alternatives
- **Project Overview**
- Project “Look Ahead”
- Open Discussion

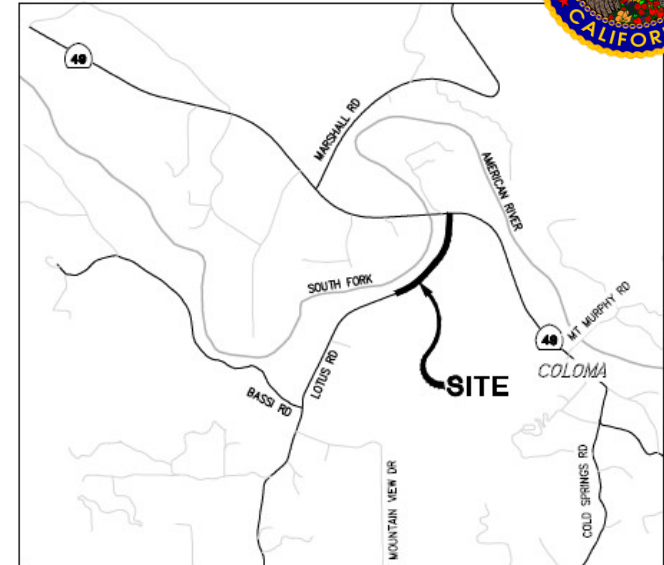




## Project Overview:

### ↳ Project Goals:

- ↳ Connectivity between Henningsen Lotus Park and SR 49 Approx. 2,300 LF
- ↳ Class I Multi-Use Trail (safely accommodate multiple user needs)
- ↳ Tie into natural trails, park, sidewalk (SR 49)
- ↳ Accommodate Bicycles, Pedestrians, etc.
- ↳ Minimize Impacts To Surrounding Resources

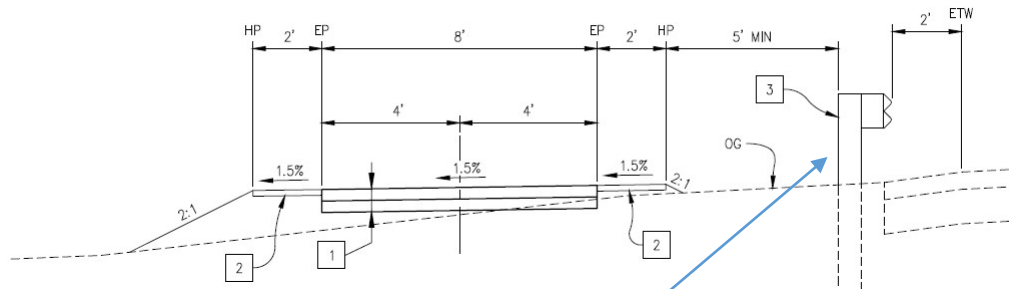




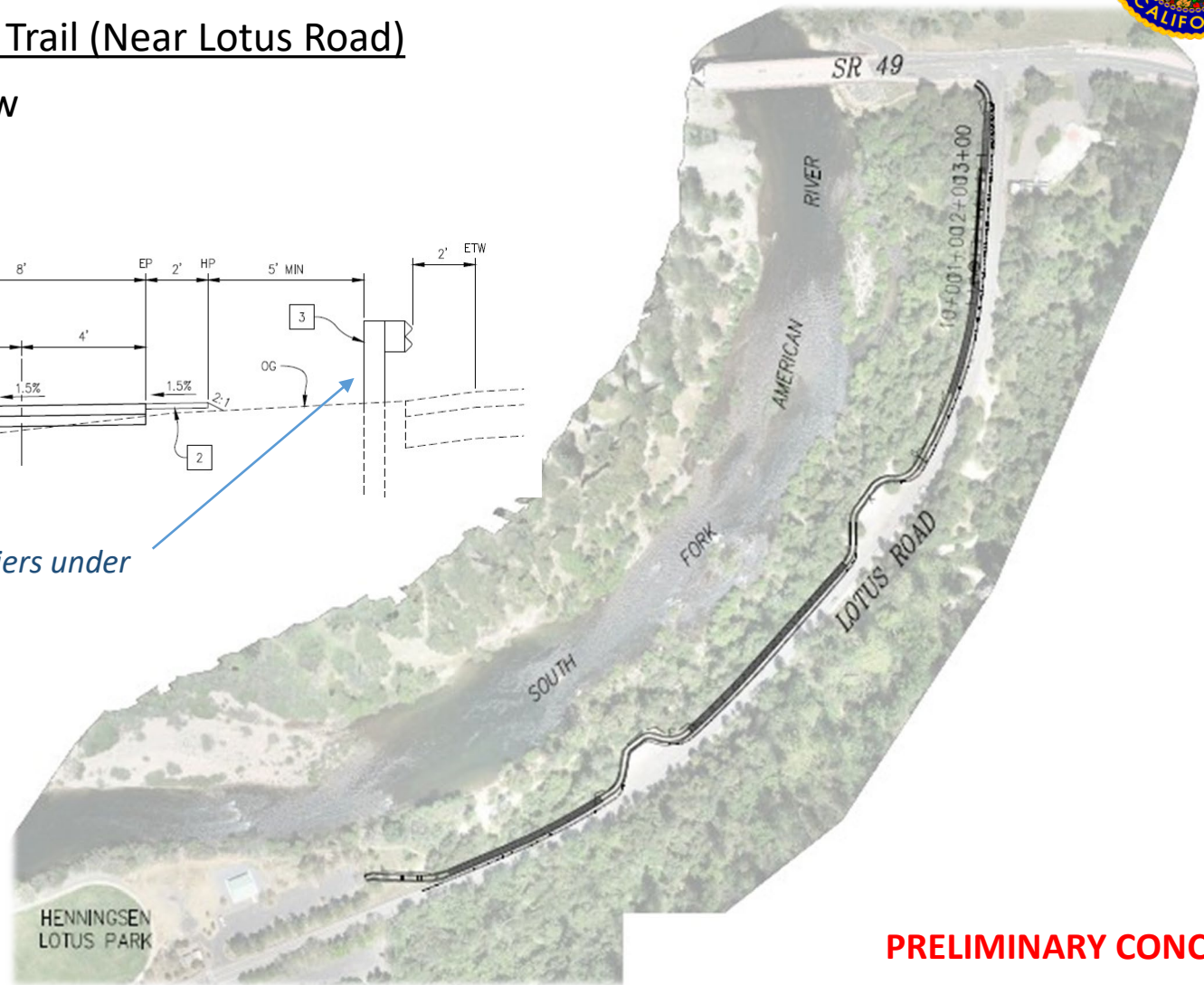


## Project Overview:

- ➔ Class I Multi-Use Trail (Near Lotus Road)
- ➔ General Overview



*Roadway barriers under evaluation*



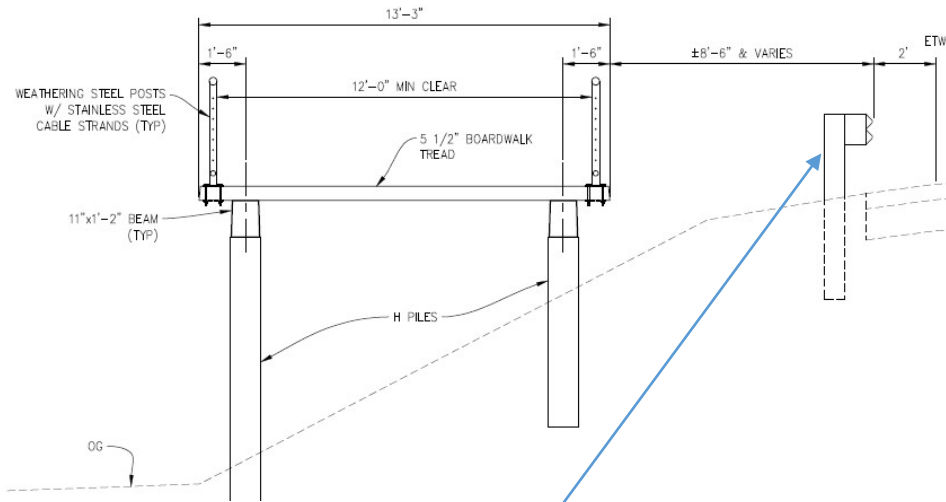
**PRELIMINARY CONCEPT**





## Project Overview:

- ➔ Class I Multi-Use Trail (Near Lotus Road)
- ➔ Boardwalk Overview



*Roadway barriers under evaluation*



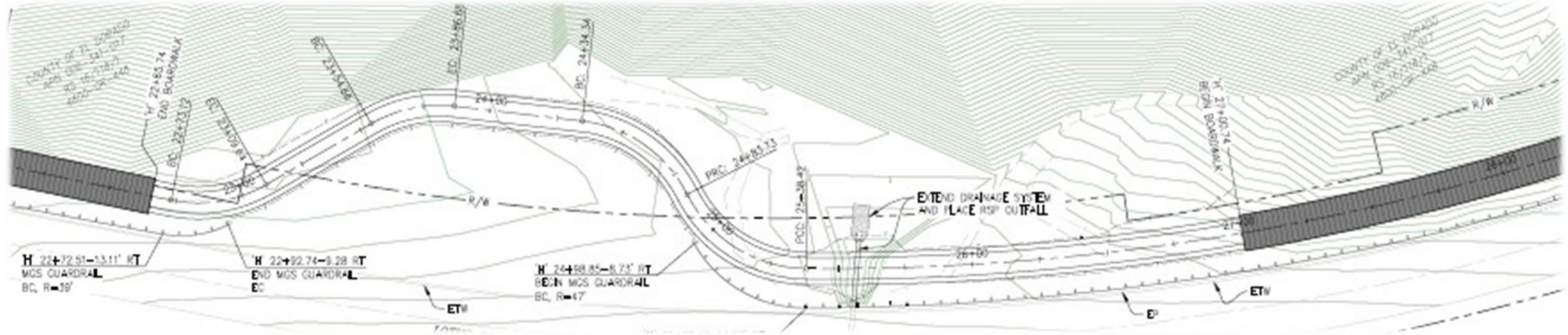
**PRELIMINARY CONCEPT**





## Project History & Alternatives:

### ↳ Class I Multi-Use Trail (Near Lotus Road)



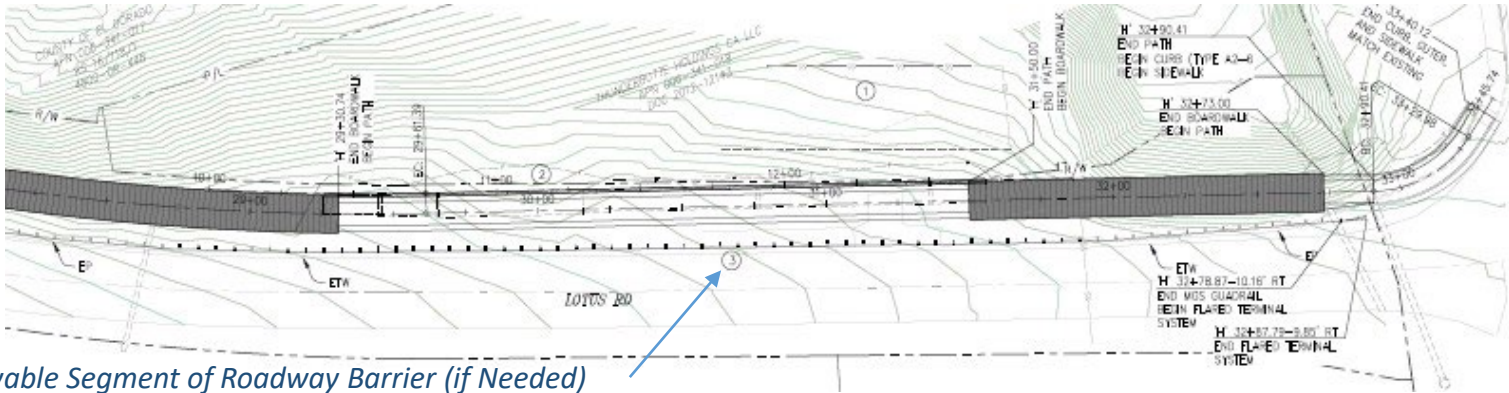
**PRELIMINARY CONCEPT**





## Project History & Alternatives:

### ➔ Class I Multi-Use Trail (Near Lotus Road)



*Removable Segment of Roadway Barrier (if Needed)*







## AGENDA

- ↳ Welcome / Introductions
- ↳ Project History & Alternatives
- ↳ Project Overview
- ↳ **Project “Look Ahead” Schedule**
- ↳ Open Discussion



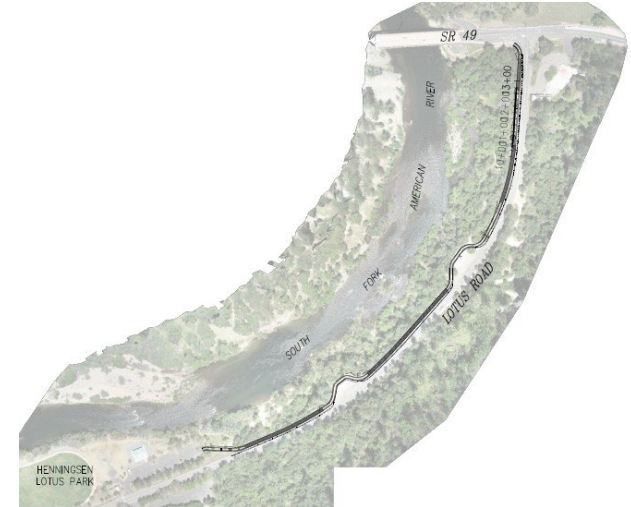




## Project “Look Ahead”:

### Schedule:

- ➔ **Planning & Design** – 2023 thru 2024/2025
  - ➔ (includes: CEQA/ NEPA clearances, Geotechnical Exploration, Design Progressions, etc.)
  
- ➔ **\* ROW Clearances** – 2024/ 2025 (\*If Needed)
  
- ➔ **Construction** – 2025/ 2026 (Pending Funding)

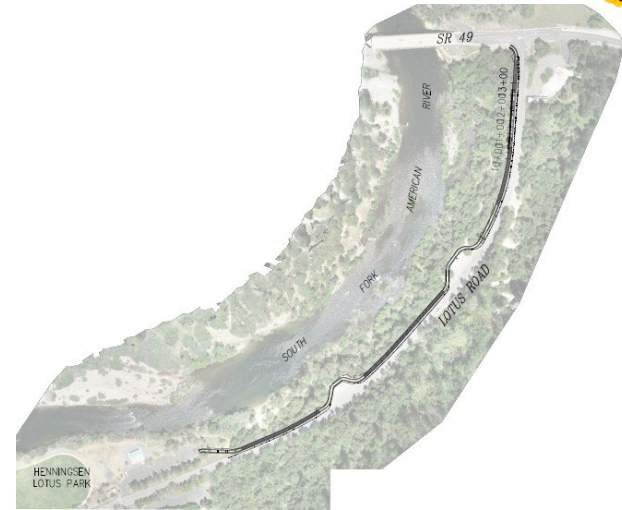




## Project “Look Ahead”:

### ↳ Current Status:

- ↳ Planning & Design
  - ↳ Preliminary Design
  - ↳ Geotechnical Exploration
  - ↳ Environmental Clearances



### ↳ “Look Ahead” Considerations:

- ↳ Identifying & Pursuing Grants
  - ↳ CMAQ (PE, ROW) *Currently Funded*
  - ↳ Potential Future ATP, State Parks
  - ↳ Other Considerations







## Questions & Open Discussion

