

# Residential Deer Dilemma More Harm Than Good

Shelly Blair

Wildlife Biologist

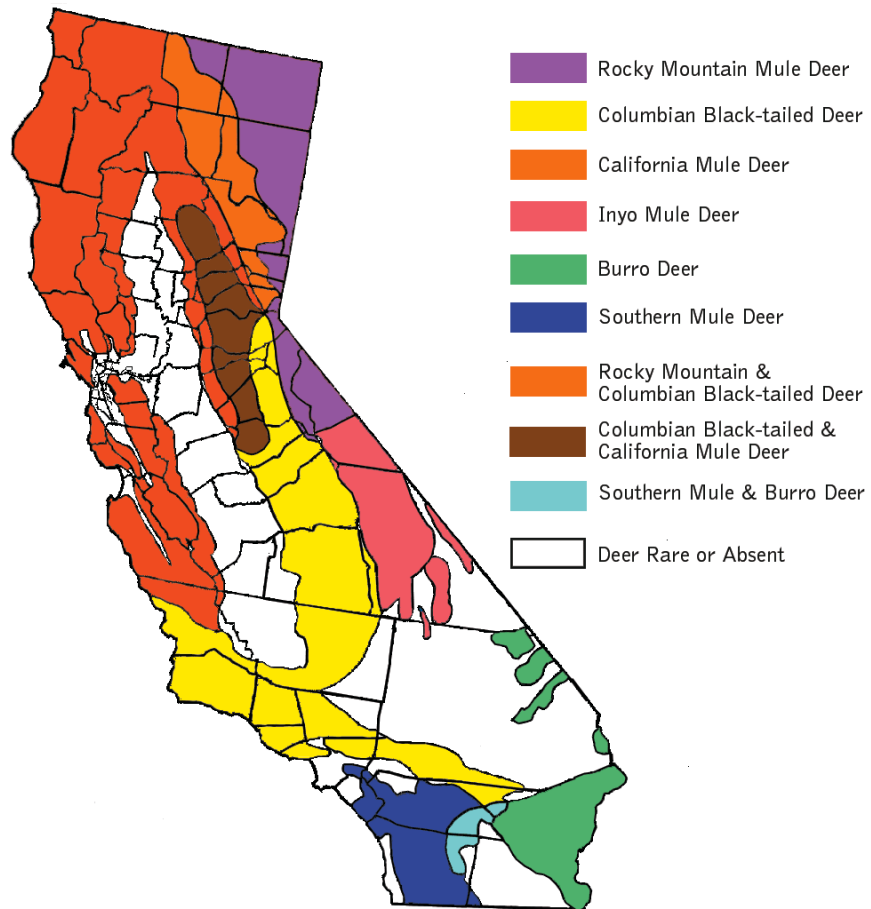
California Department of Fish and Wildlife

Unit Biologist for El Dorado and Alpine Counties



# Biology-Habitat and Distribution

Deer Distribution in California



- Occupies variable habitat
- Migratory vs. Resident



# Biology-Reproduction, Life Span

- Average life span 6.5 yrs.
- Mate in late Nov. & Dec.
  - Males quite eating; necks enlarge; can become aggressive
- 7-mo. gestation
- Young born in early summer (usually twins)
  - Does become more aggressive and protective of young
- Fawns stay with mother for first year



# Why You Should NOT Feed Deer

- ▶ **It is against the LAW!!!!**

- ▶ Feeding big game (deer) is illegal (California Code of Regulations: Title 14. Natural Resources Section 251.3.

- ▶ **Even though feed stores sell it- does not make it legal in California to use it!**



# Why You Should NOT Feed Deer

Feeding wildlife, particularly deer, congregates them in a manner that is unnatural. When consistently fed, deer will over browse their surroundings, negatively impacting their native habitat.



# Why You Should NOT Feed Deer

- High deer densities can attract predators and increase risk of death by coyotes or domestic dogs



# Why You Should NOT Feed Deer

## ➤ Spreads Disease:

- Adenovirus
- Foot and mouth disease
- EHD (epizootic hemorrhagic disease)
- Bluetongue
- Hair Loss Syndrome
- Parasite overloads – Lung Worm; Exotic Lice







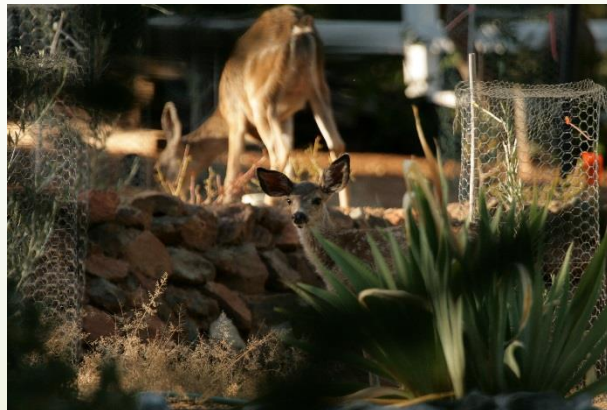
# Why You Should NOT Feed Deer

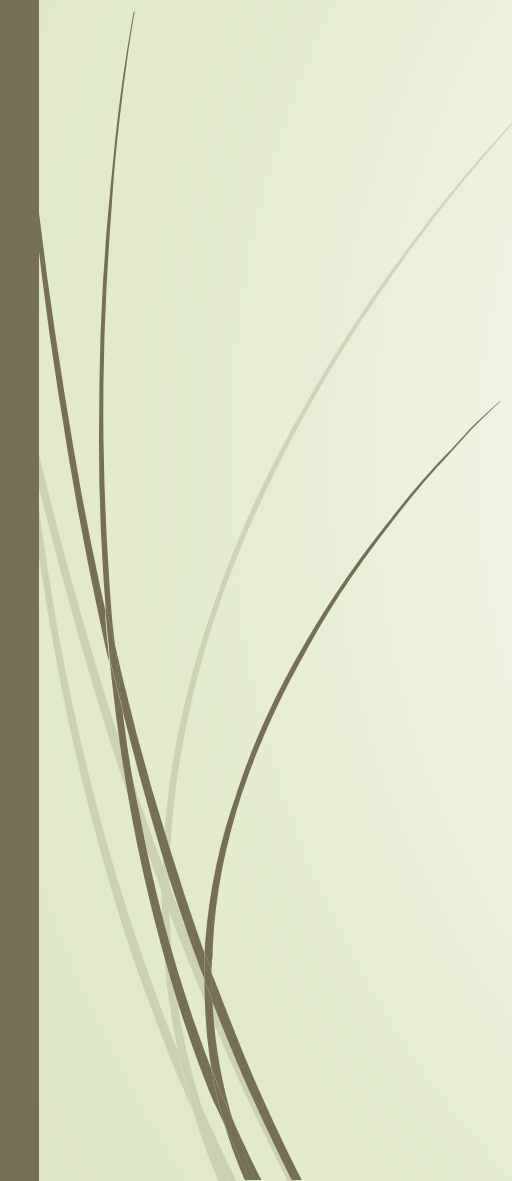

- Increase the likelihood of vehicle collisions



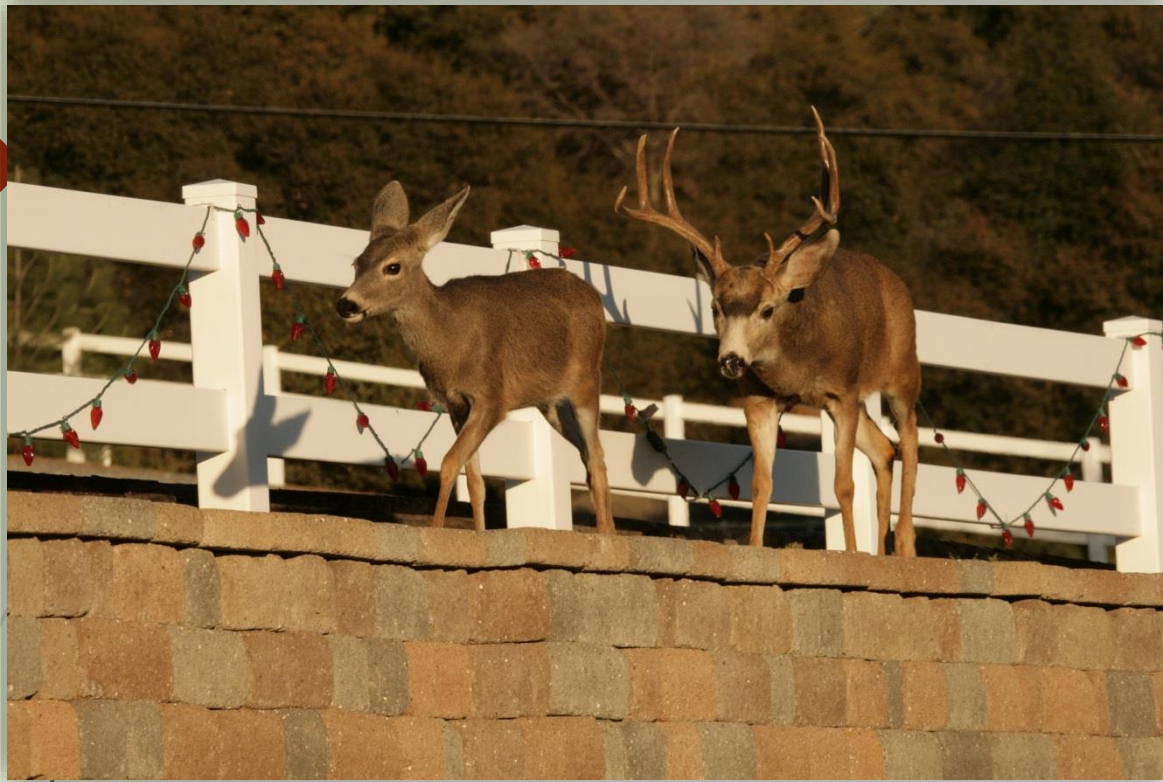
# Why You Should NOT Feed Deer

- Results in over-browsing of local vegetation and ornamental plants – your neighbors don't want herds of deer eating their expensive landscaping!
- Deny access to food because subordinate deer are kept away from feed sites.
- Deer behavior is altered when artificial feeding exists
- Deer that are fed food that the micro fauna in their stomachs cannot digest will actually starve to death with a stomach full of food. These digestive microorganisms are specific to food type unnatural foods will put the in poor body condition)






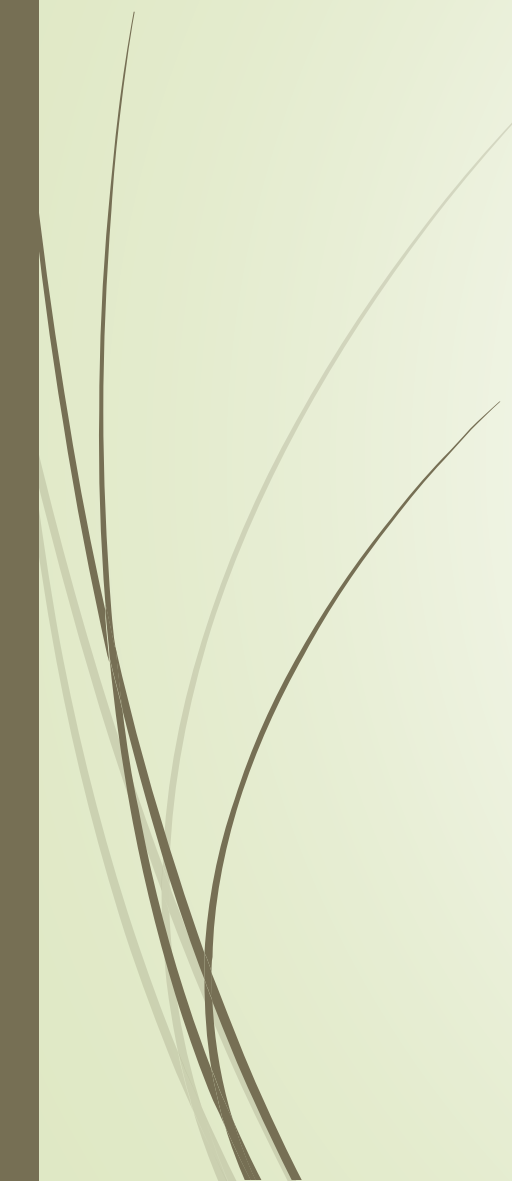
So while you love seeing animals  
in your backyards.....



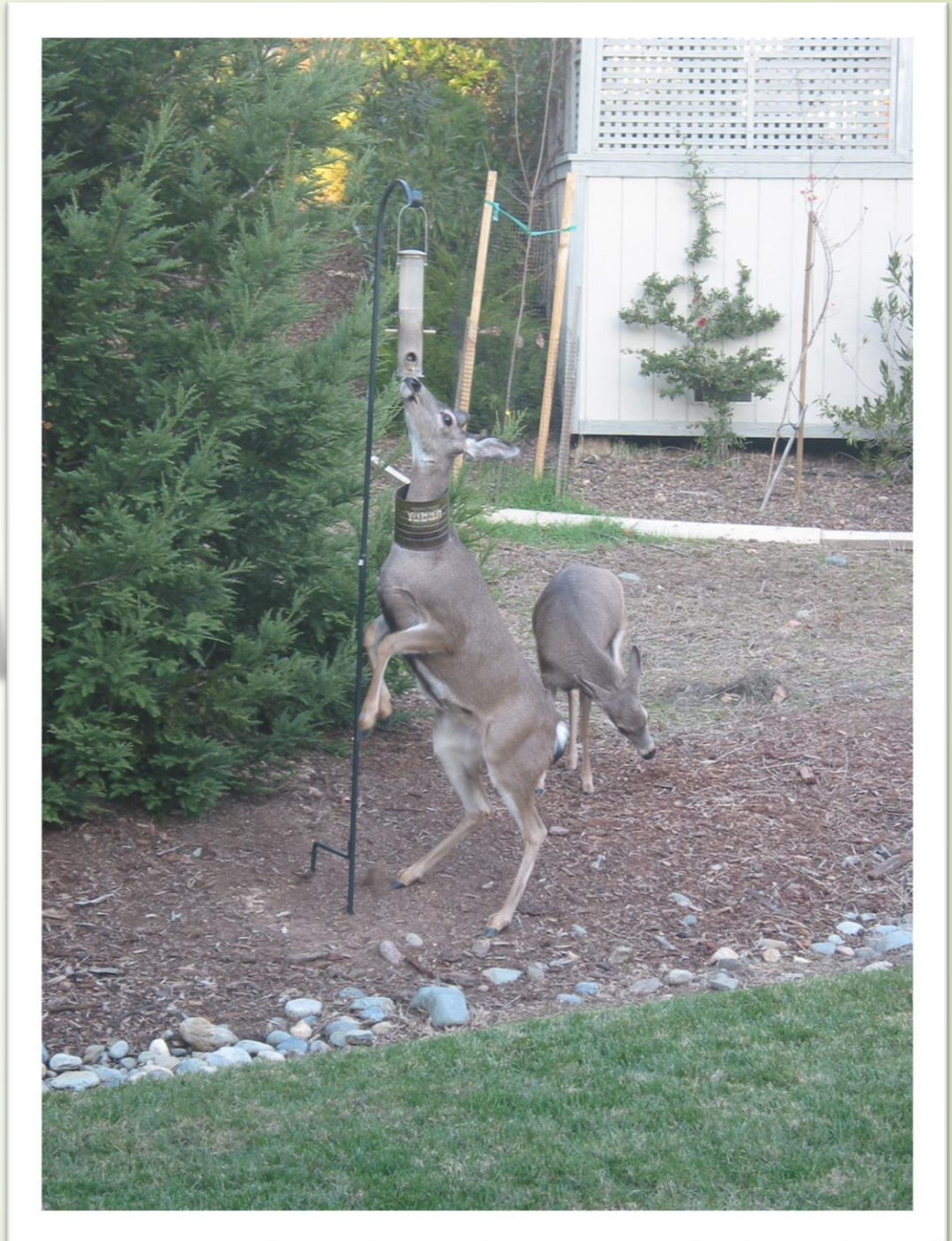
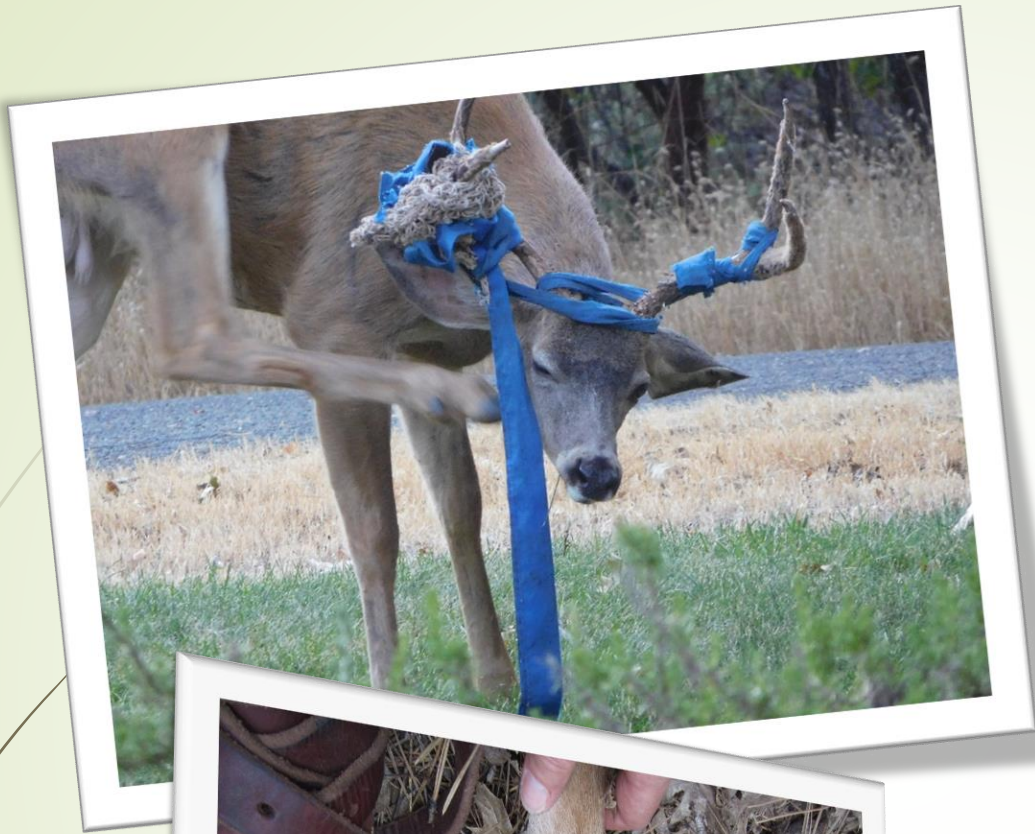





It has very negative  
consequences when people  
intentionally feed them.....











People are killing them with kindness. Please don't be one of those people!

Deer do not need our help to survive.



THE END



Questions????