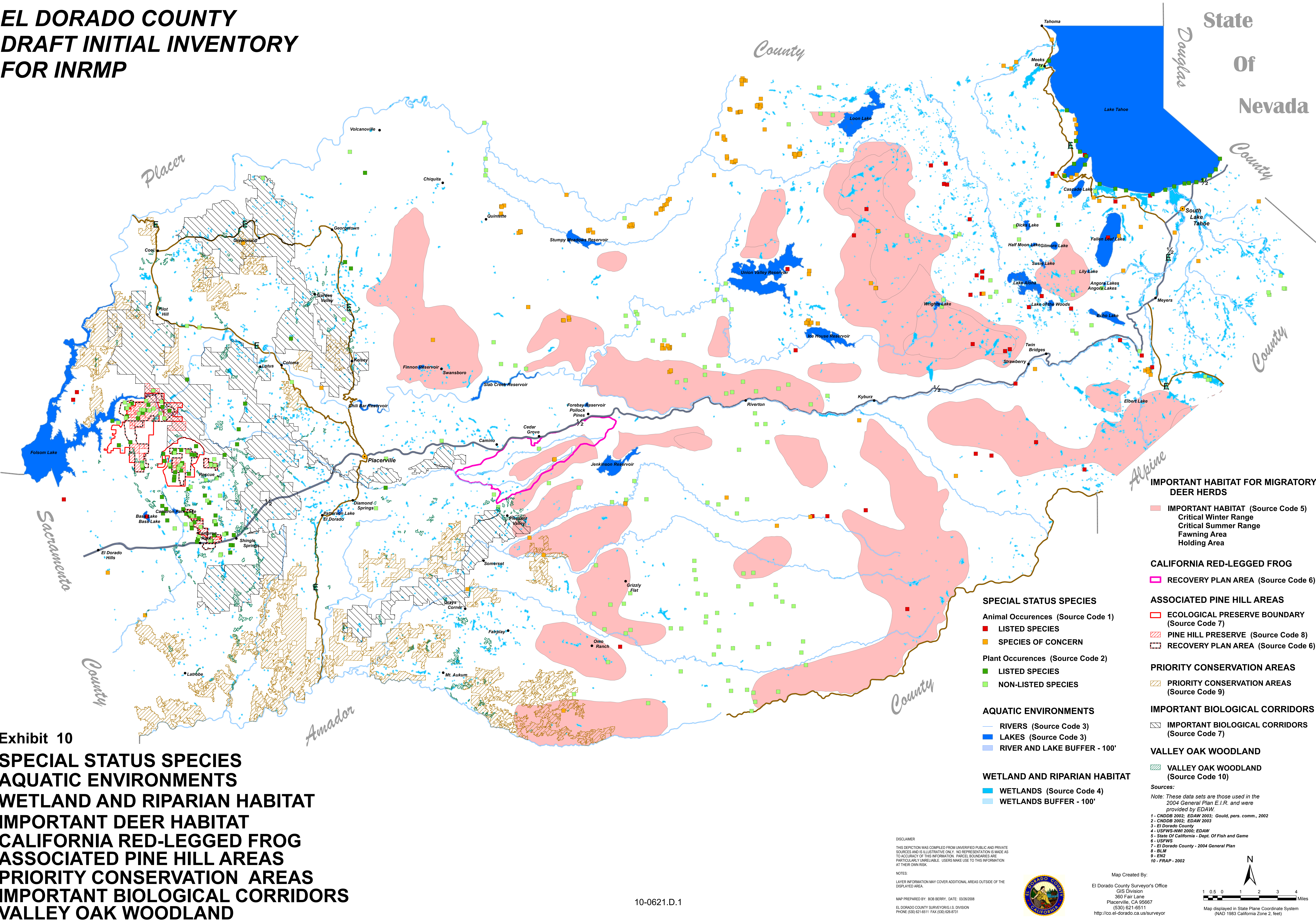


# EL DORADO COUNTY DRAFT INITIAL INVENTORY FOR INRMP

State  
Of  
Nevada



**IMPORTANT HABITAT FOR MIGRATORY DEER HERDS**

- IMPORTANT HABITAT (Source Code 5)
- Critical Winter Range
- Critical Summer Range
- Fawning Area
- Holding Area

**CALIFORNIA RED-LEGGED FROG**

- RECOVERY PLAN AREA (Source Code 6)

**ASSOCIATED PINE HILL AREAS**

- ECOLOGICAL PRESERVE BOUNDARY (Source Code 7)
- PINE HILL PRESERVE (Source Code 8)
- RECOVERY PLAN AREA (Source Code 6)

**PRIORITY CONSERVATION AREAS**

- PRIORITY CONSERVATION AREAS (Source Code 9)

**IMPORTANT BIOLOGICAL CORRIDORS**

- IMPORTANT BIOLOGICAL CORRIDORS (Source Code 7)

**VALLEY OAK WOODLAND**

- VALLEY OAK WOODLAND (Source Code 10)

Sources:  
 Note: These data sets are those used in the 2004 General Plan E.I.R. and were provided by ED&AW.  
 1 - CNDDB 2002; ED&AW 2003; Gould, pers. comm., 2002  
 2 - CNDDB 2002; ED&AW 2003  
 3 - El Dorado County  
 4 - USFWS-NW 2000; ED&AW  
 5 - State Of California - Dept. Of Fish and Game  
 6 - USFWS  
 7 - El Dorado County - 2004 General Plan  
 8 - BLM  
 9 - EN2  
 10 - FRAP - 2002

**SPECIAL STATUS SPECIES**

- Animal Occurrences (Source Code 1)
- LISTED SPECIES
- SPECIES OF CONCERN
- Plant Occurrences (Source Code 2)
- LISTED SPECIES
- NON-LISTED SPECIES

**AQUATIC ENVIRONMENTS**

- RIVERS (Source Code 3)
- LAKES (Source Code 3)
- RIVER AND LAKE BUFFER - 100'

**WETLAND AND RIPARIAN HABITAT**

- WETLANDS (Source Code 4)
- WETLANDS BUFFER - 100'

**Exhibit 10  
SPECIAL STATUS SPECIES  
AQUATIC ENVIRONMENTS  
WETLAND AND RIPARIAN HABITAT  
IMPORTANT DEER HABITAT  
CALIFORNIA RED-LEGGED FROG  
ASSOCIATED PINE HILL AREAS  
PRIORITY CONSERVATION AREAS  
IMPORTANT BIOLOGICAL CORRIDORS  
VALLEY OAK WOODLAND**

DISCLAIMER  
 THIS DEPICTION WAS COMPILED FROM UNVERIFIED PUBLIC AND PRIVATE SOURCES AND IS ILLUSTRATIVE ONLY. NO REPRESENTATION IS MADE AS TO ACCURACY OF THIS INFORMATION. PARCEL BOUNDARIES ARE PARTICULARLY UNRELIABLE. USERS MAKE USE TO THIS INFORMATION AT THEIR OWN RISK.  
 NOTES:  
 LAYER INFORMATION MAY COVER ADDITIONAL AREAS OUTSIDE OF THE DISPLAYED AREA.  
 MAP PREPARED BY: BOB BERRY, DATE: 03/26/2008  
 EL DORADO COUNTY SURVEYOR'S DIVISION  
 PHONE (530) 621-6511 FAX (530) 628-8731



Map Created By:  
 El Dorado County Surveyor's Office  
 GIS Division  
 360 Fair Lane  
 Placerville, CA 95667  
 (530) 621-6511  
<http://co.el-dorado.ca.us/surveyor>

