

Pavement Management Program Roadway Condition Report



Community Development Agency
Transportation Division
March 31, 2015

Legistar 14-1370

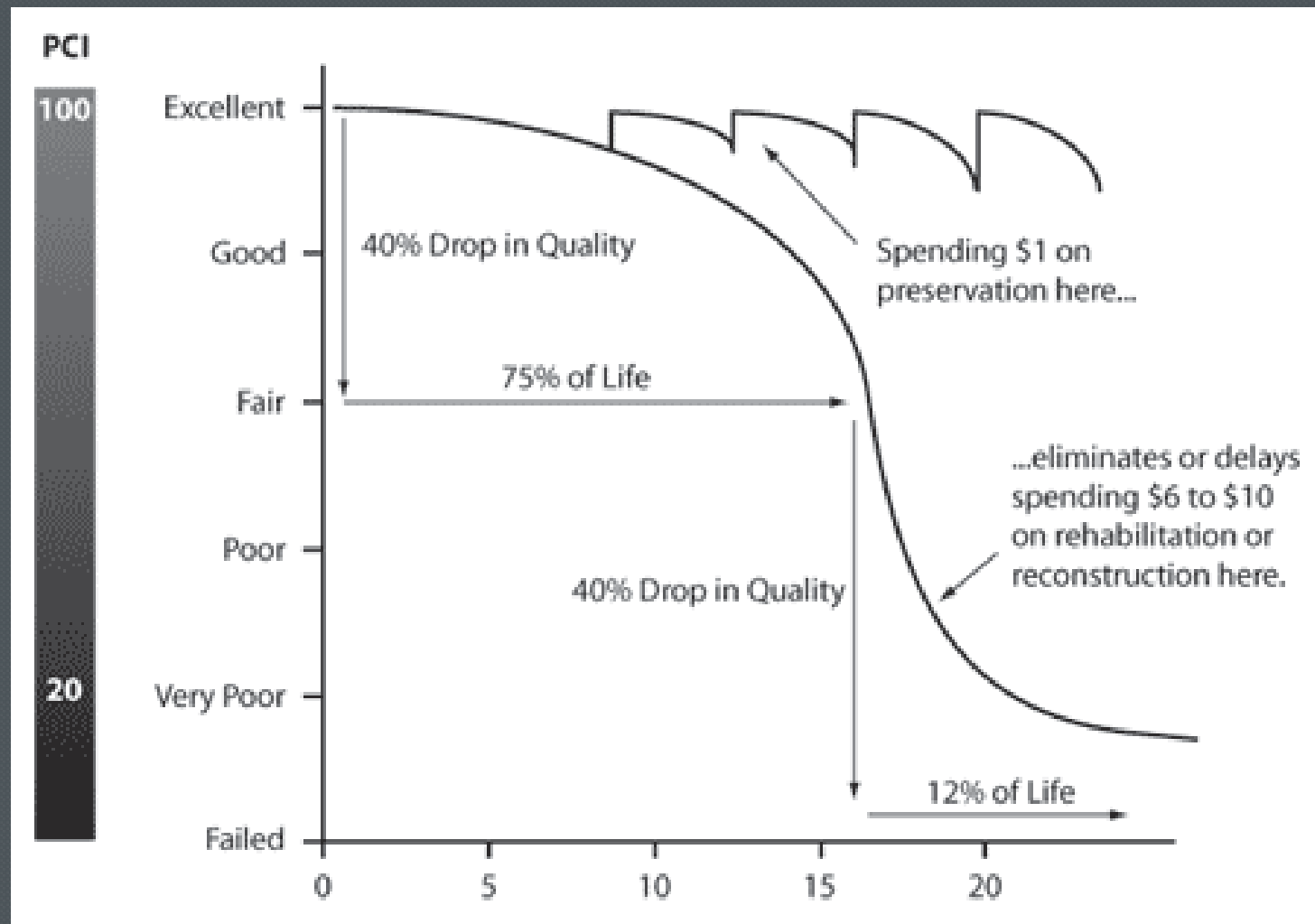
Pavement Management Program

- **We believe that the Pavement Management Program benefits the County by evaluating road system conditions, and assisting in determining the best and most cost effective alternatives for meeting the maintenance and rehabilitation needs for each road.**

Pavement Management Program Task Breakdown

- Roadway Inspection
- Asset Management
- Treatment History
- Calculating Maintenance and Rehabilitation Treatment Costs
- Modeling Future System Conditions and Needs
- Information/Education/Inquiries

Pavement Management Road Deterioration Curve



Pavement Management Inspection

- Provides a consistent, accurate, nonbiased, impartial, statistically based method for assessing and comparing pavement conditions throughout the County
- Each inspection measures the severity and extent of 19 different roadway conditions
- Inspection Information is used to Calculate the Pavement Condition Index (PCI)

Pavement Management Inspections

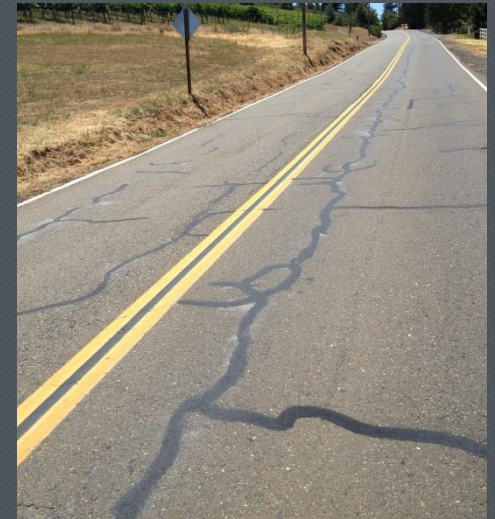
Pavement Management Program inspections measure nineteen different roadway conditions. Some examples of these conditions are pictured below.



Potholes



Alligator Cracking



Block Cracking

Pavement Condition Index County Wide



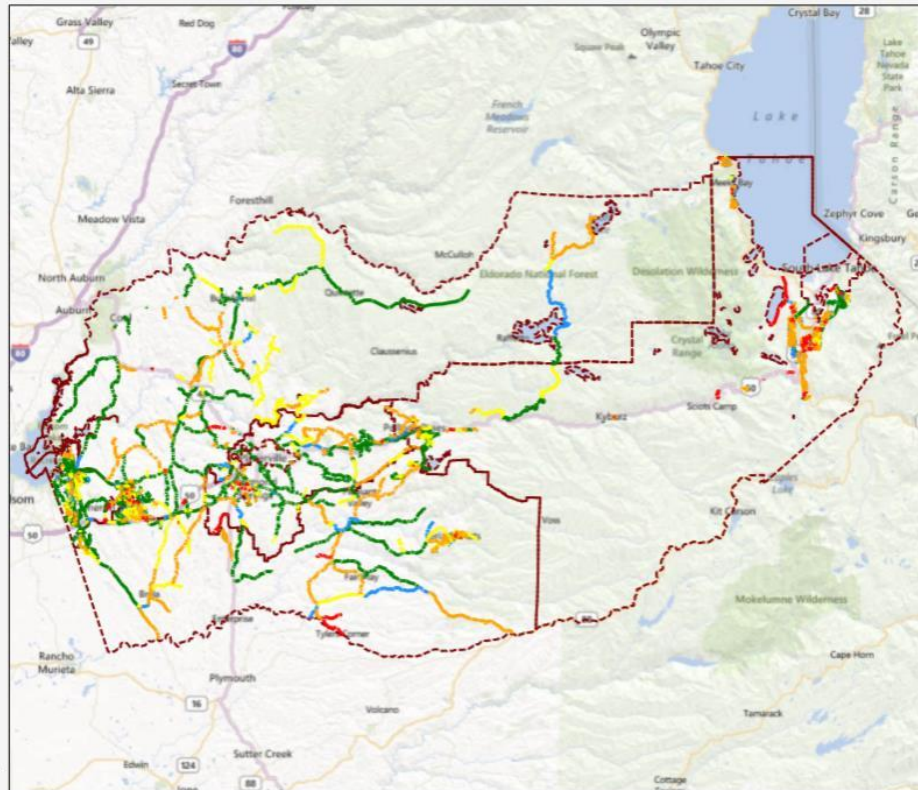
El Dorado County

Current PCI Condition

Printed: 3/20/2014

Feature Legend

- I - Very Good
- II - Good (non-load)
- III - Good (load-related)
- IV - Poor
- V - Very Poor



Pavement Condition Index

Local Area



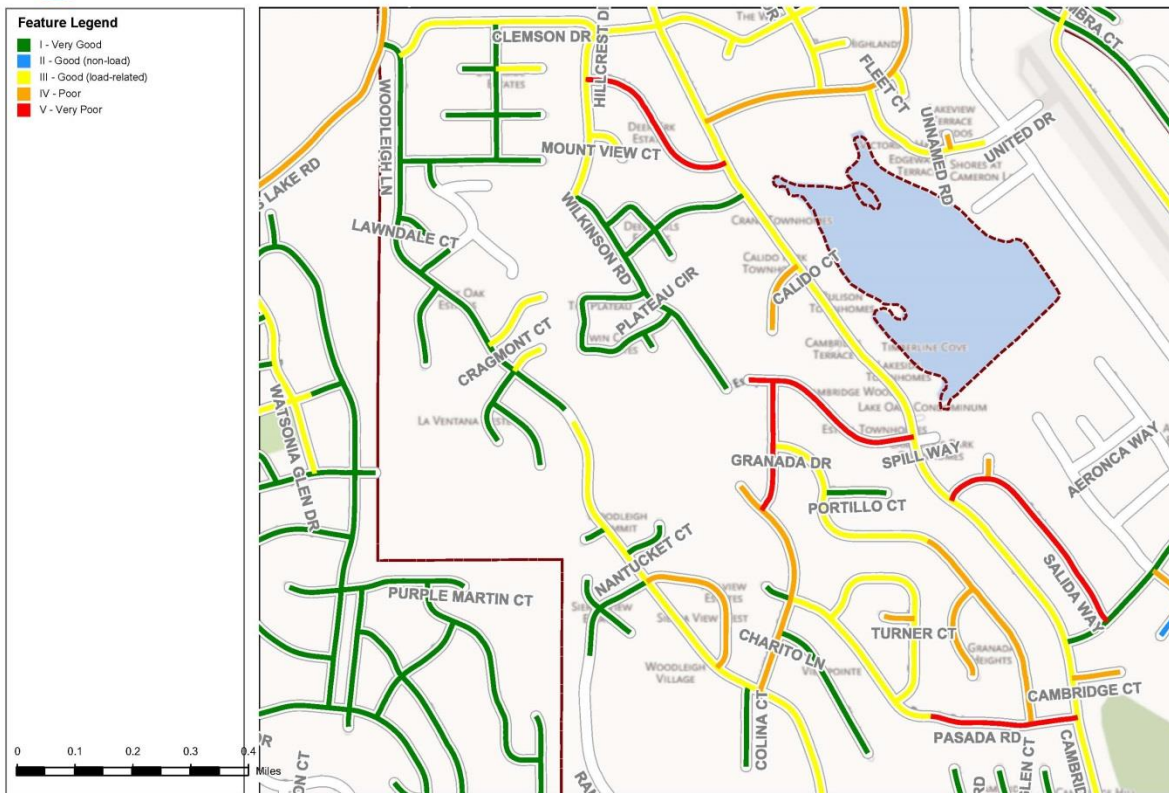
El Dorado County

Current PCI Condition

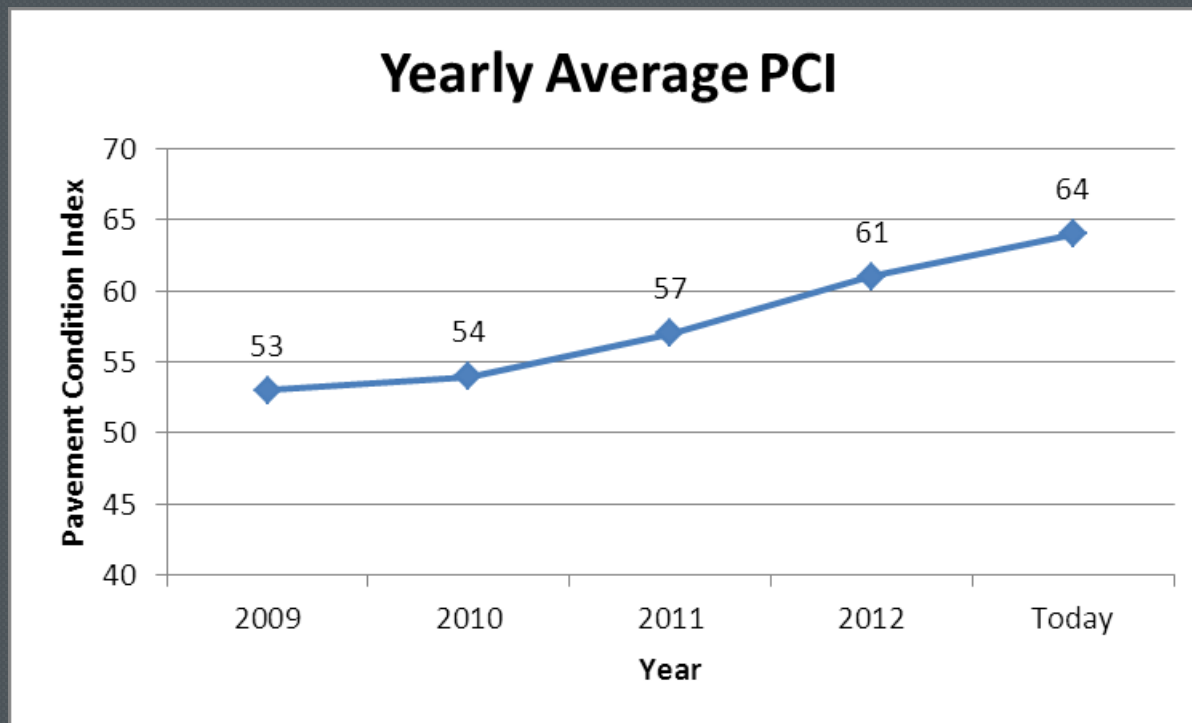
Printed: 3/6/2014

Feature Legend

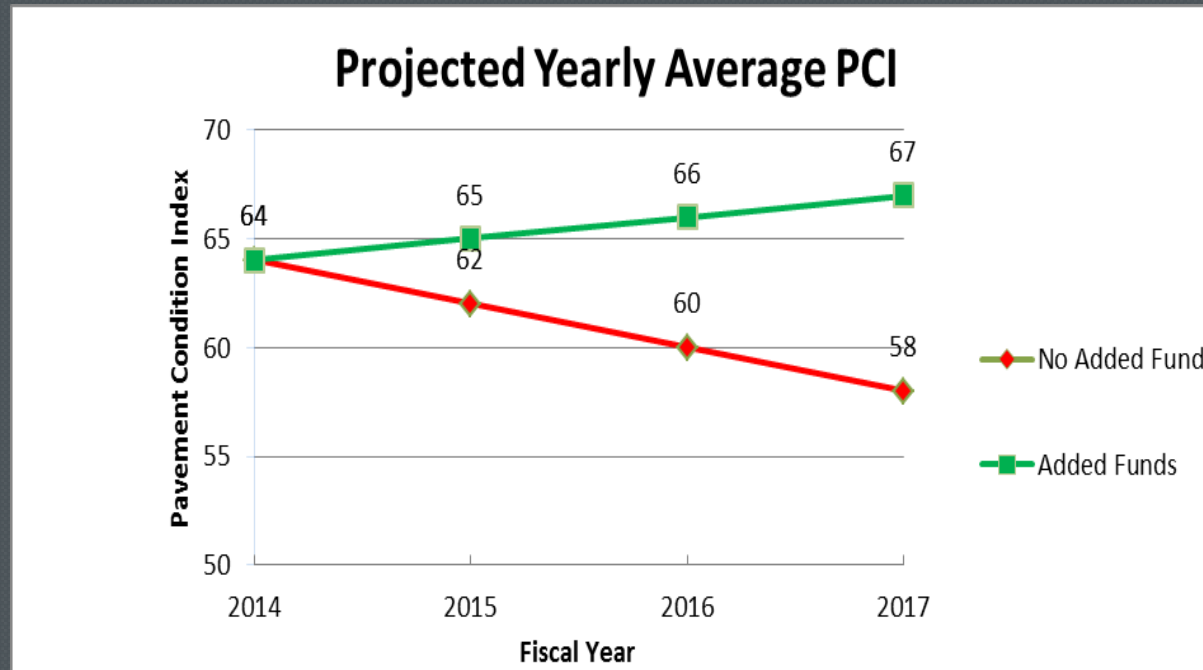
- I - Very Good
- II - Good (non-load)
- III - Good (load-related)
- IV - Poor
- V - Very Poor



COUNTY ROAD YEARLY AVERAGE PCI



Projected Yearly Average PCI



Pavement Management Program

- ① **Great Infrastructure for Great Communities.**