



EL DORADO COUNTY COMMUNITY WILDFIRE PROTECTION STRATEGY

DECEMBER 11, 2018



El Dorado Irrigation District



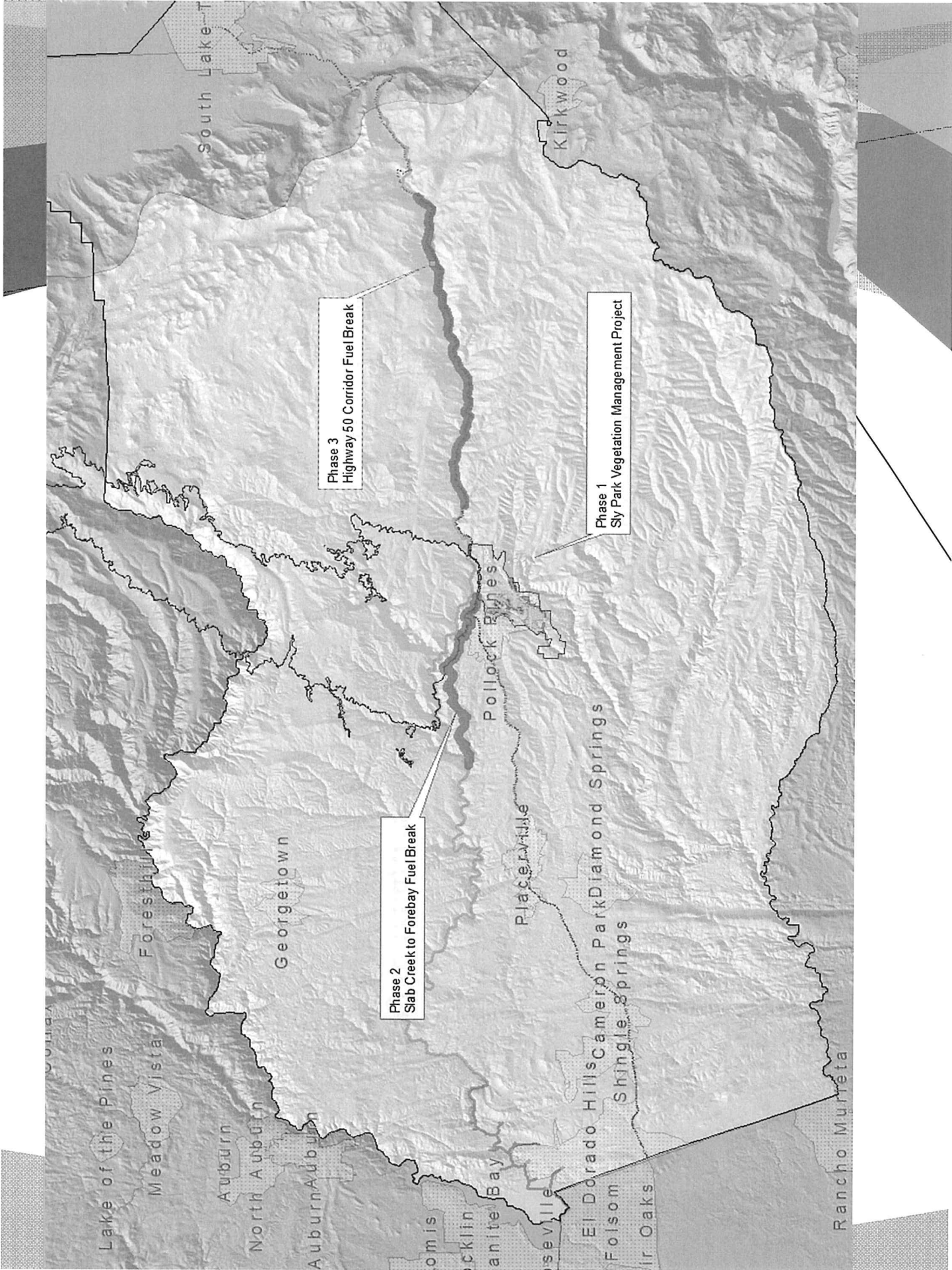
El Dorado County
Resource Conservation District



FIRE ADAPTED 50

- * Sly Park Vegetation Management Project
- * Camino/Pollock Pines shaded fuel break –
Slab Creek Dam to Pony Express Trail
along the canyon rim
- * Highway 50 shaded fuel break –
Icehouse Road to Echo Summit







GOALS

Restoring and maintaining resilient landscapes – Landscapes across all jurisdictions are resilient to fire related disturbances in accordance with management objectives.

Creating fire-adapted communities – Human populations and infrastructure can withstand a wildfire without loss of life or property.

Responding to Wildfires – All jurisdictions participate in making and implementing safe, effective, and efficient risk-based fire management decisions.



El Dorado Irrigation District



El Dorado County
Resource Conservation District





HOW?

Collaboration



Interagency Agreements



Good Neighbor authority



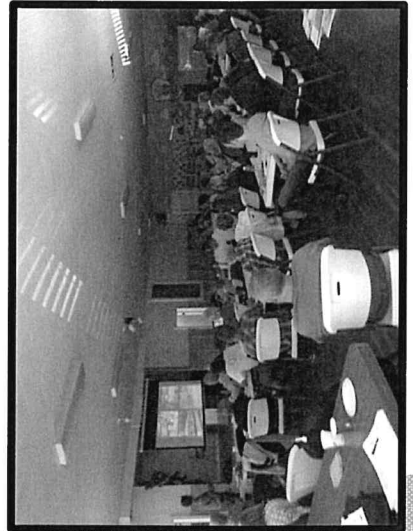
Cohesive Strategy

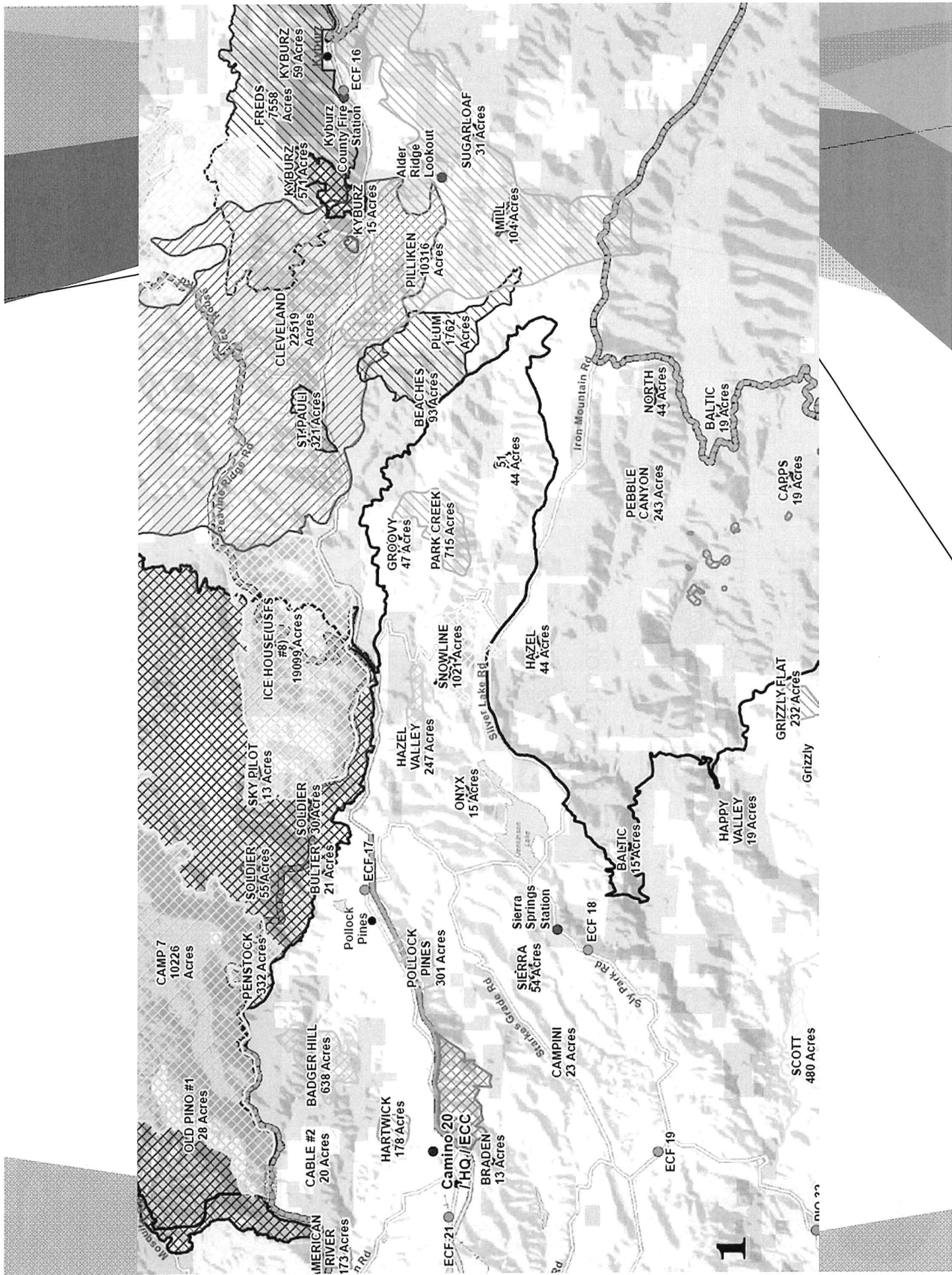


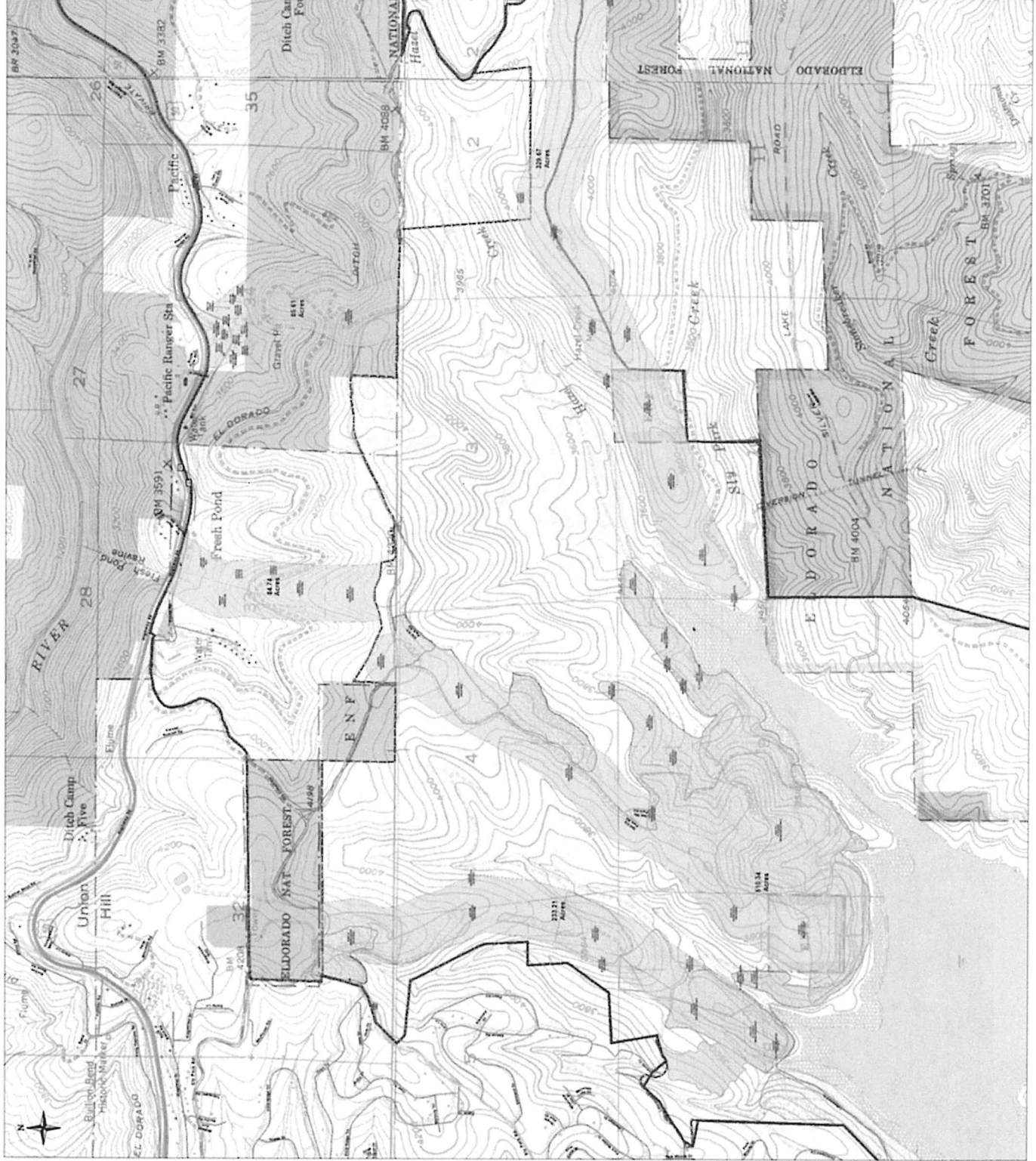
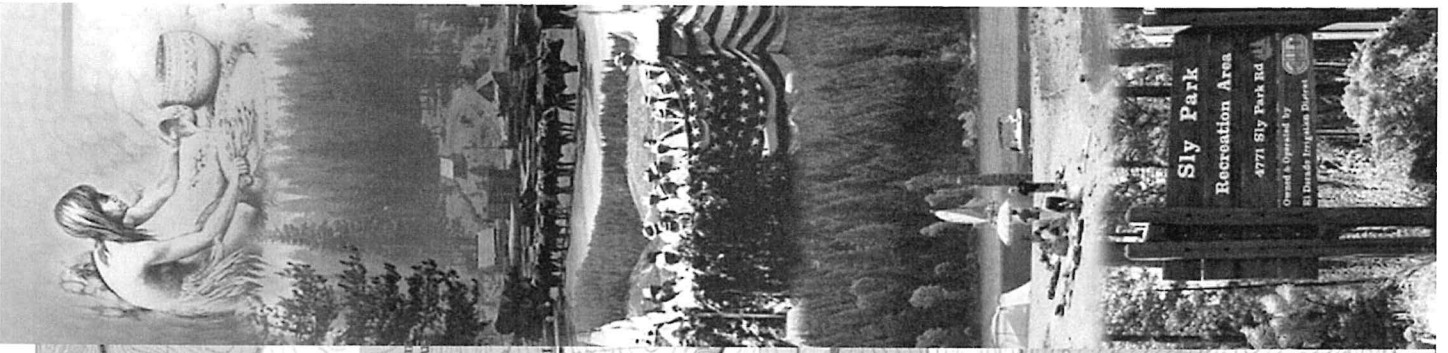
Grants



Matching Contributions







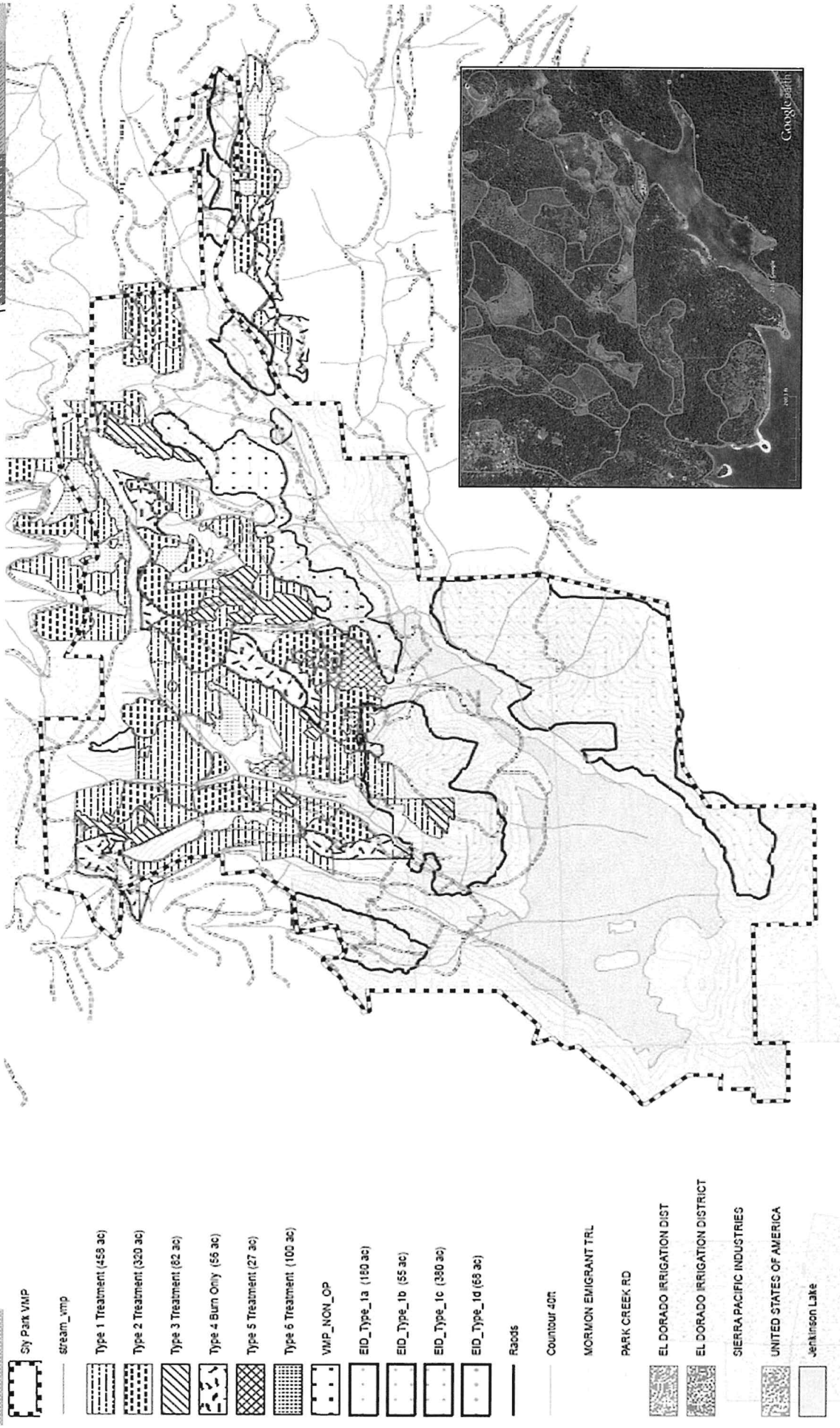
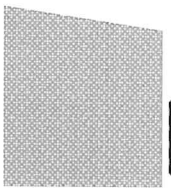
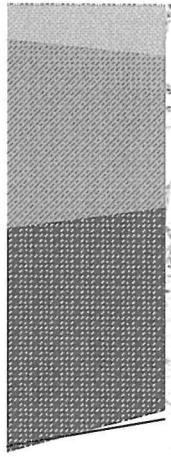


Sierra Pacific Industries
Growing Forests For Our Future









Sly Park VMP

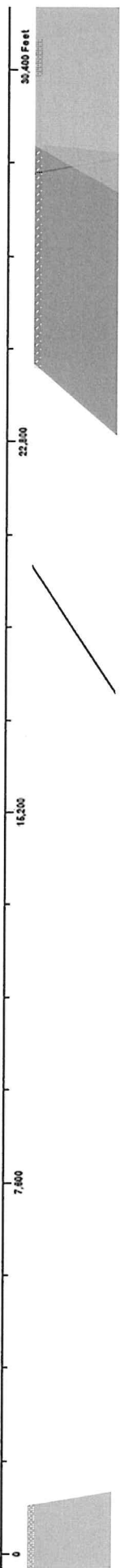
stream_vmp

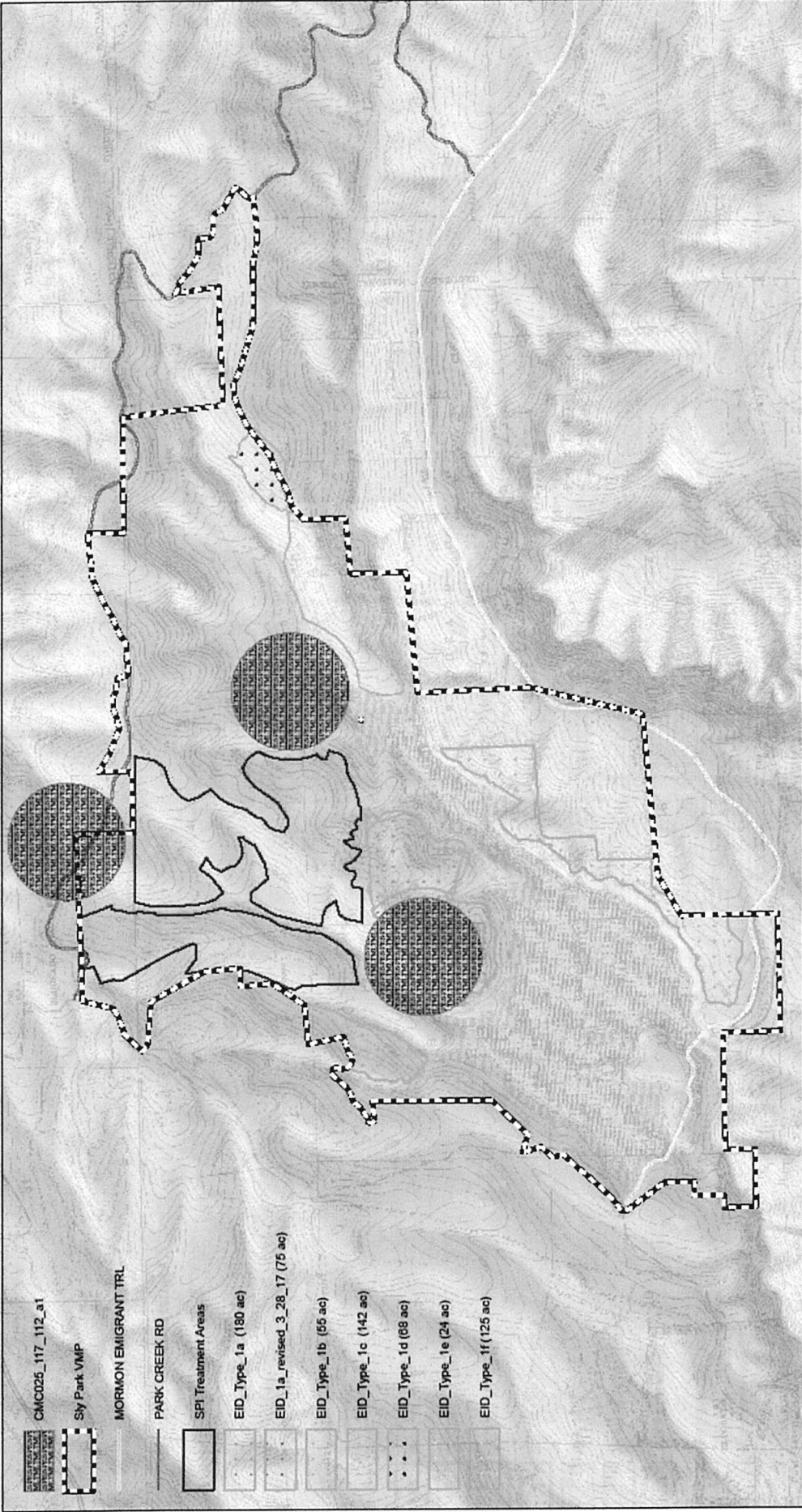
- Type 1 Treatment (459 ac)
- Type 2 Treatment (320 ac)
- Type 3 Treatment (62 ac)
- Type 4 Burn Only (56 ac)
- Type 5 Treatment (27 ac)
- Type 6 Treatment (100 ac)

- VMP_NON_OP
- EID_Type_1a (180 ac)
- EID_Type_1b (55 ac)
- EID_Type_1c (380 ac)
- EID_Type_1d (68 ac)

- Roads
- Countour 40ft
- MORMON EMIGRANT TRL
- PARK CREEK RD

- EL DORADO IRRIGATION DIST
- EL DORADO IRRIGATION DISTRICT
- SIERRA PACIFIC INDUSTRIES
- UNITED STATES OF AMERICA
- Jenkinson Lake





- CMC025_117_112_a1
- Sly Park VMP
- MORMON EMIGRANT TRL
- PARK CREEK RD
- SPI Treatment Areas
- EID_Type_1a (180 ac)
- EID_1a_revised_3_28_17 (75 ac)
- EID_Type_1b (55 ac)
- EID_Type_1c (142 ac)
- EID_Type_1d (69 ac)
- EID_Type_1e (24 ac)
- EID_Type_1f (125 ac)

Sly Park Vegetation Management Project



El Dorado County



1:25,000

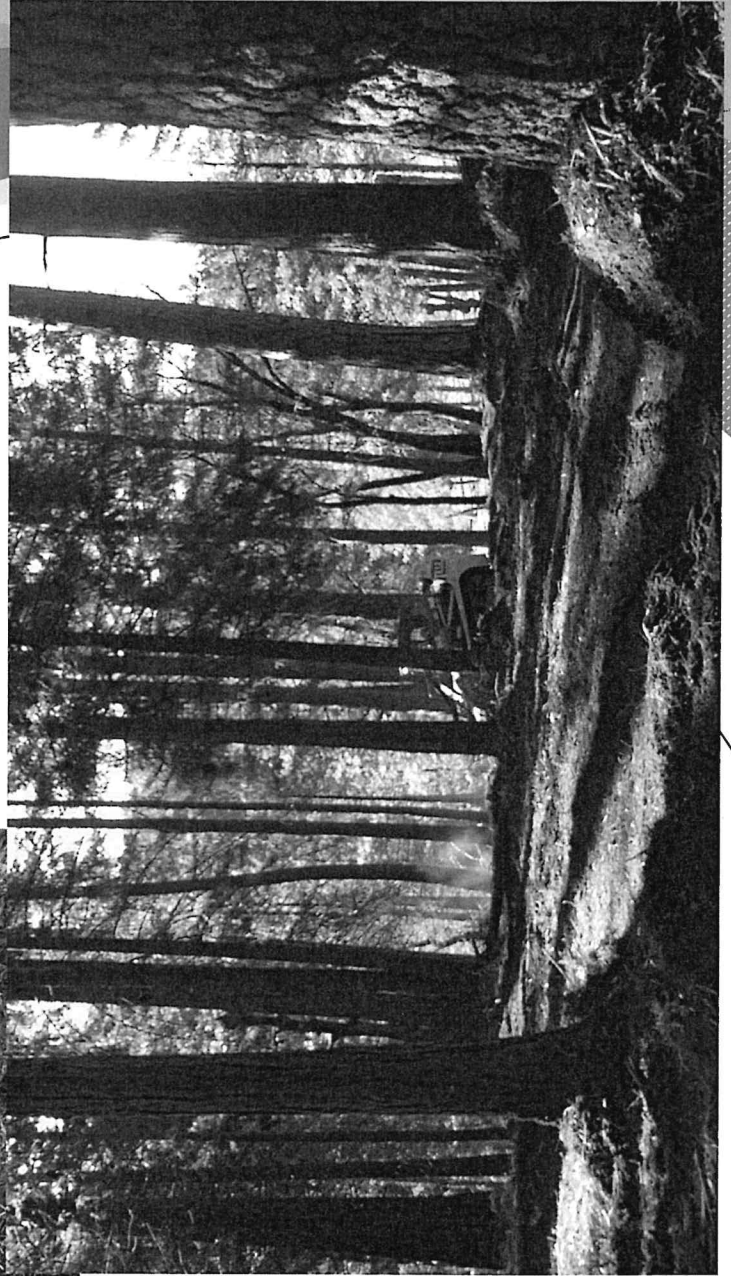


The Resource Conservation District (RCD) makes no representations or warranties regarding the accuracy of data or maps. The RCD shall not be liable under any circumstances for any direct, special, incidental, or consequential damages with respect to any use of the data or maps, or accuracy of the data or maps.

Created by: Mark Egbert

Date: October 3, 2017

Contact: 100 Fern Road, Placerville CA (925) 266-6330

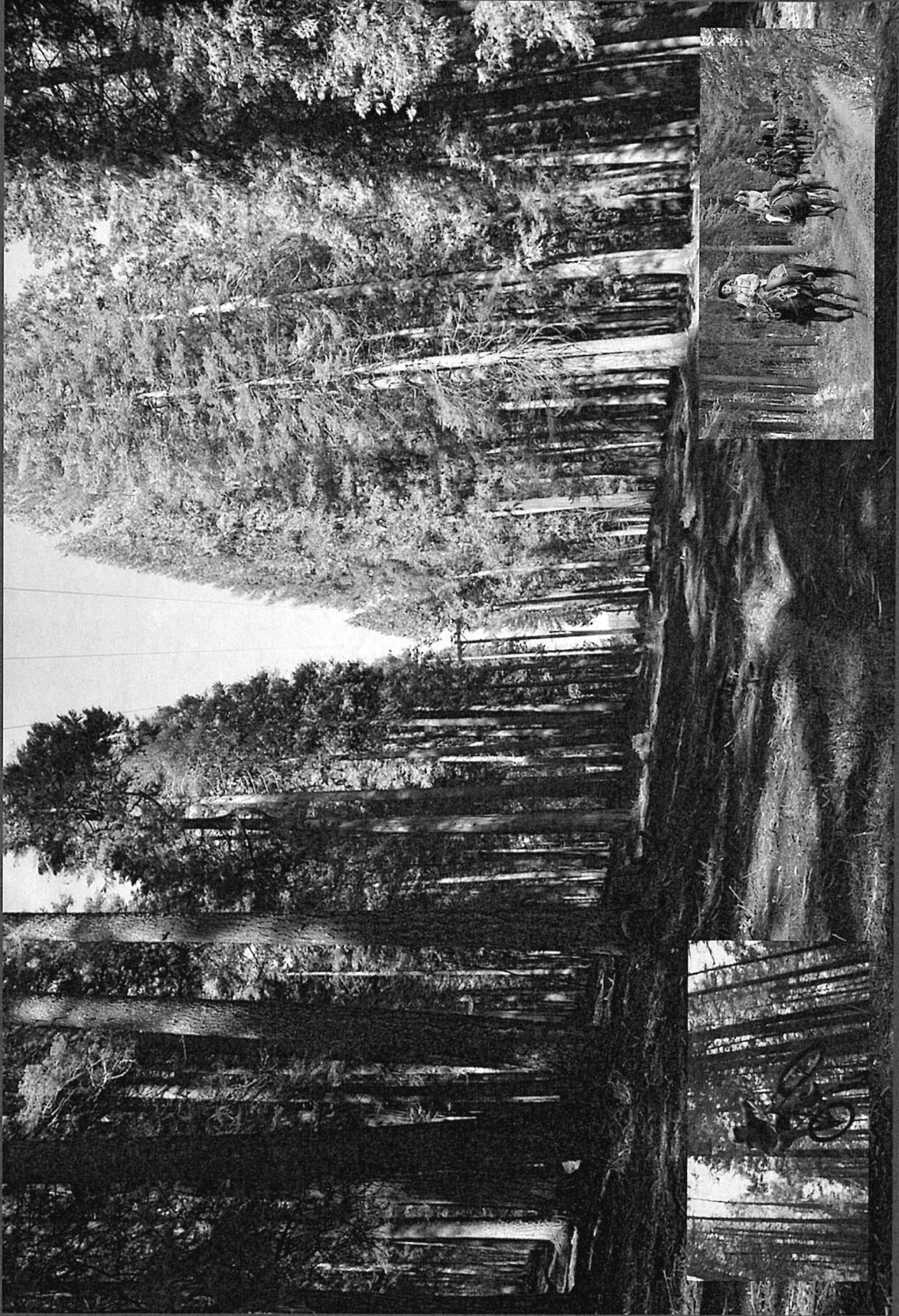


LEFT
COAST
LAND
CLEARING
EST. 1988
12714 Green Way
Placerville, CA 95667
209/356-9124



Garrett Forest Management
PO Box 2350
Placerville, CA 95667













Fire Adapted 50
SOFAR Cohesive Strategy
Collaborative Community Wildfire
Protection Efforts

El Dorado County

1:60,816

75,000 Feet

75,000

75,000

75,000

The Resource Conservation Districts (RCD) make no warranty or representation regarding the accuracy of data or maps. The RCD shall not be liable under any circumstances for any direct, special, incidental, or consequential damages with respect to any use or reuse of any data or maps derived from the use of data or maps.

Created by: Mark Labert
Date: July 31, 2018
Contact: 100 Fern Road, Placerville CA, (531) 233-5833



Si District County
Resource Conservation District



SIERRA PACIFIC
INDUSTRIES
Creating Value for All Years



Si District's Irrigation District



Sly Park Vegetation Management Project Phase I

CALFIRE Funding 2018

\$972,000.00
644 acres

\$1,509.00/ acre total project cost

CALFIRE Funding 2019

\$975,000.00

Est. 1000 acres to be treated

Sierra Nevada Conservancy 2019

\$500,000.00
345 acres

Over 2000 acres under Phase I



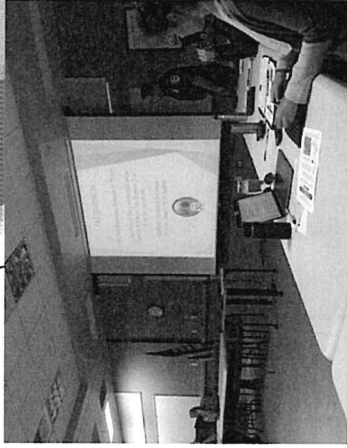
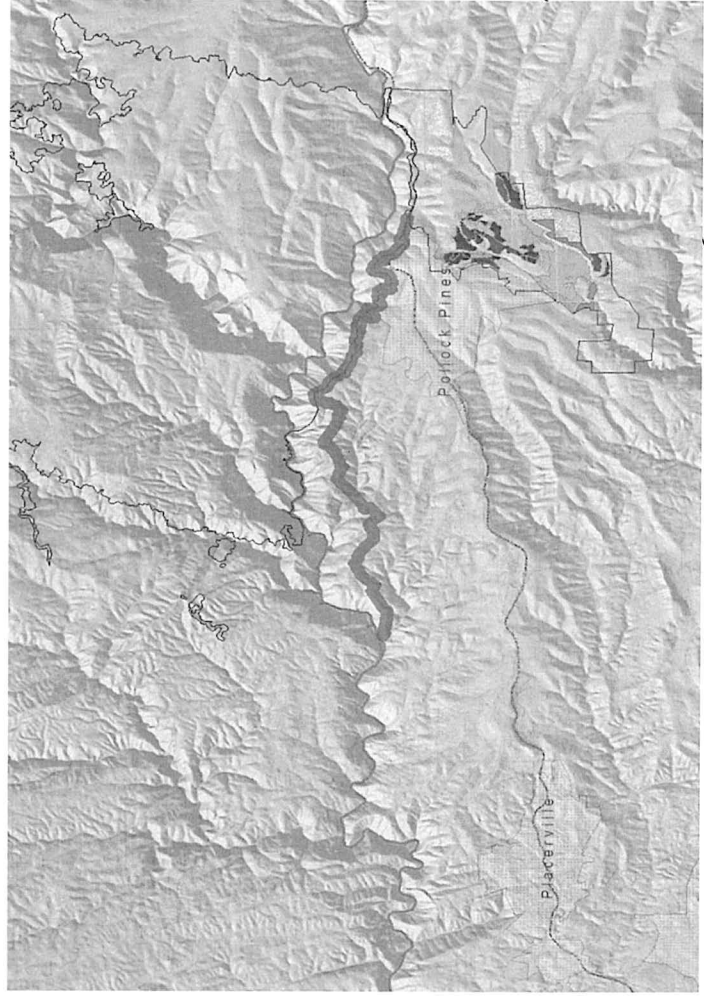
611 Community Information District



Camino/Pollock Pines SFB Project Phase II

Joint NEPA/ CEQA Environmental planning being
conducted under
Good Neighbor Authority

CALFIRE: \$1,957,000.00
1000+ acres



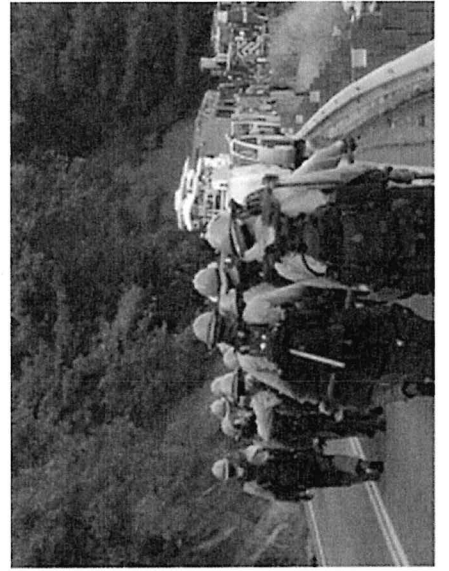
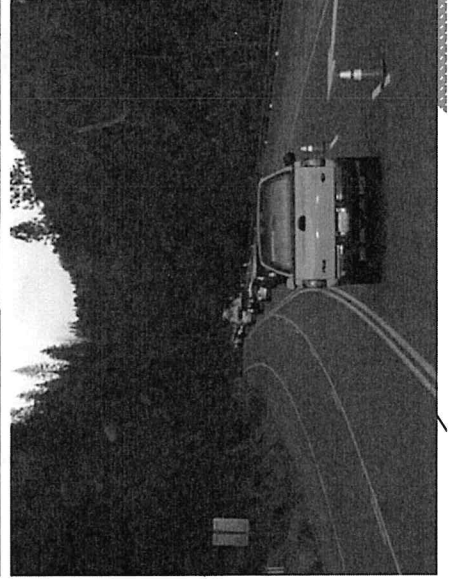
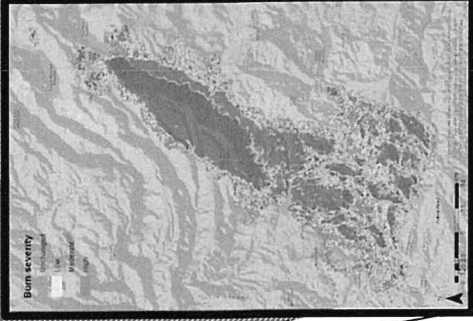


Sierra Pacific Industries



Highway 50 Corridor Fuel Break Project Phase III

400 acres being treated under Good Neighbor Authority

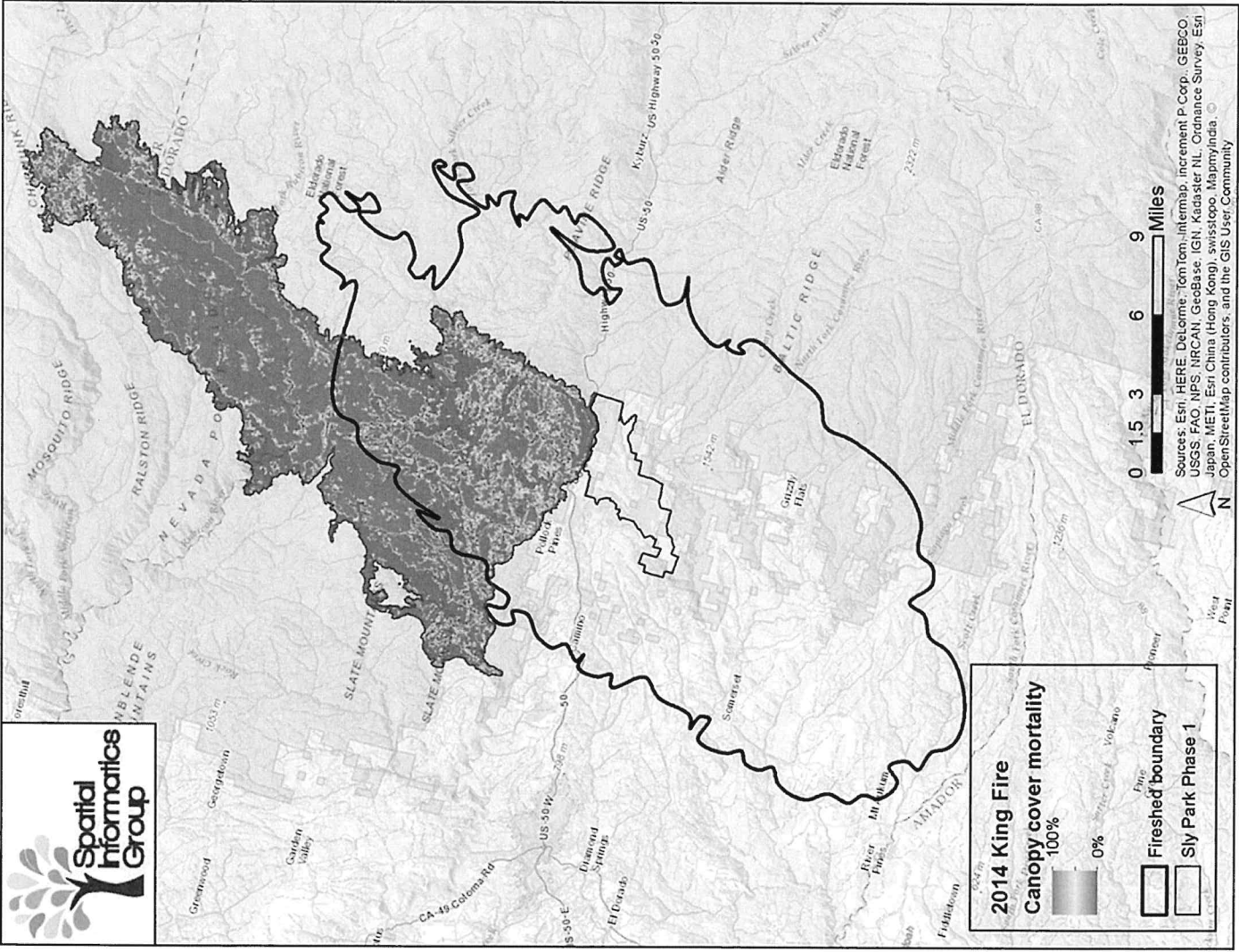




Long-Term Management Vegetation Management Program (VMP)







Sources: Esri, HERE, DeLorme, TomTom, Intermap, increment P Corp., GEBCO, USGS, FAO, NPS, NRCAN, GeBCo, IGN, Kadaster NL, Ordnance Survey, Esri Japan, METI, Esri China (Hong Kong), Swisstopo, MapmyIndia, © OpenStreetMap contributors, and the GIS User Community

**Cone Fire – September 2002
Blacks Mountain Experimental Forest**

Unthinned

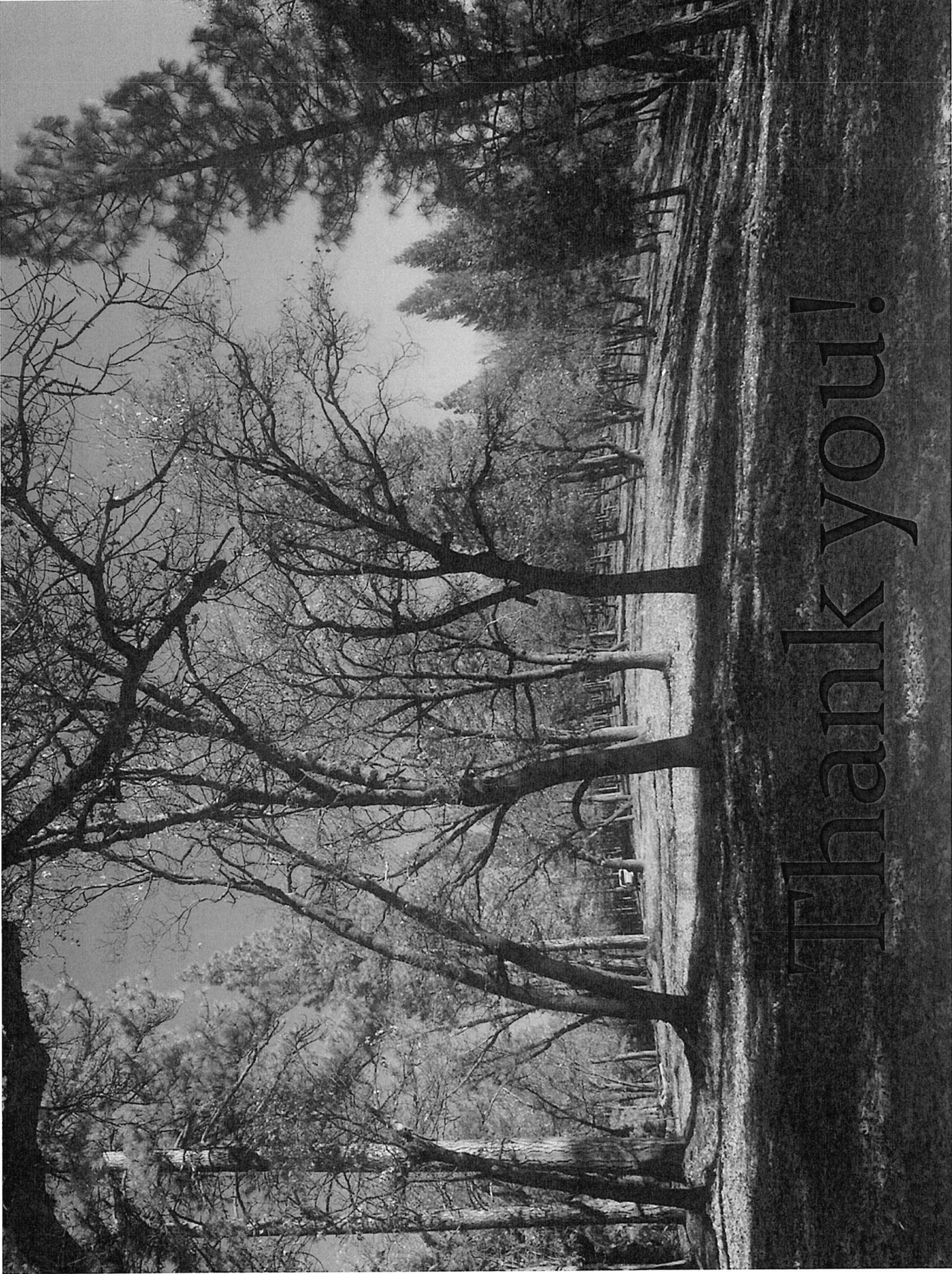
Unthinned

**Thinned 1998 +
RxBurn 2000**

**Thinned Mid 1980s
No RxBurn**



<https://vimeo.com/288456409>
<http://e.doradored.sightbox.io>



Thank you!