

El Dorado Irrigation District

In reply refer to: DS0808-331

August 14, 2008 - amended February 18, 2010

County of El Dorado
Department of Transportation
ATTN: Mike Pavlick
Via Email: mike.pavlick@edcgov.us

ESTIMATED COST – WATER AND/OR WASTEWATER SERVICE

PROJECT: Missouri Flat Road Interchange
TYPE OF SERVICE: IRRIGATION (ROADWAY)

Water Facility Capacity Charge (FCC)	\$	N/A
(service transferred from 6880 Perks Court and CalTrans Park-N-Ride on Mother Lode Dr.)		
Time & Materials	\$	7,000.00*
-Labor and material for two new roadway irrigation service taps		
-Two 3/4" meters and pressure regulators (Meter A and Meter B)**		
-One 3/4" pressure regulator (Perks Ct. location)		
-Labor for meter installation		
Backflow Inspection Fees (2)	\$	<u>150.00</u>
TOTAL	\$	7,150.00

The Fees Quoted Above Are Subject To Change Without Notice.

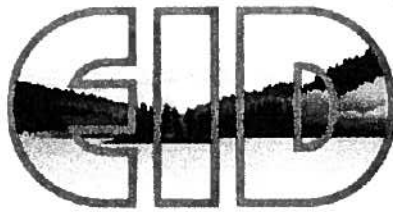
*These items are charged on a time and material basis, and all charges above the estimate will be billed to the applicant. Should actual cost be less than the estimate, a refund will be made to the applicant.

** The meter pulled from the abandoned service at 6880 Perks Court will be re-set on the remaining service outlet on the property.

- **Notice of Pressure Regulator**
Indicate "yes" or "no" and sign the bottom of the form. Take a copy for your records.
- **Service Application**
Read and initial highlighted items and sign the bottom. Take a copy for your records.
- **Please return the original Notice of Pressure Regulator and Service Application along with your check in the amount of \$7,150.00.**

Sincerely,

Kim Nethercott
Kim Nethercott
Development Services



El Dorado Irrigation District

ABANDONMENT AND RELOCATION OF WATER SERVICE

**SITE ADDRESS: Perks Court, Placerville, CA
ASSESSOR'S PARCEL NUMBER: 327-130-20
TYPE OF SERVICE: IRRIGATION ONLY - ROADWAY**

The purpose of this acknowledgment is to support the request by El Dorado County Department of Transportation to abandon one of the two existing 3/4" water services currently serving Assessor's parcel number 327-130-20, 6880 Perks Court (Location ID 113078), and relocate the service. The service will be set within a CalTrans right-of-way and provide irrigation at the east bound on-ramp located at US Highway 50 and Missouri Flat Road (see attached map for new service location-Meter B). A field inspection will be performed to verify that the existing service line on Perks Court has been abandoned back to the District main.

El Dorado County Department of Transportation will be responsible for payment of any and all charges associated with the relocation of the service and the abandonment of the existing service line at Perks Court. The billing account will be established in the name of El Dorado County Department of Transportation, 2850 Fair Lane, Placerville, CA 95667.

It is further acknowledged that the remaining 3/4" service on parcel 327-130-20 (Location ID 119398) which was buried during the course of construction of Phase 1A of the project, is to be reinstalled and activated prior to the completion of Phase 1B of the project. The service will be reinstalled by the County's contractor and inspected by El Dorado Irrigation District. El Dorado County Department of Transportation will be responsible for payment of any and all charges associated with the reinstallation of the service. The billing account will remain in the name of El Dorado County Department of Transportation, 2850 Fair Lane, Placerville, CA 95667.

READ AND ACKNOWLEDGED:

**El Dorado County
Department of Transportation**

**By: _____
James W. Ware, P.E., Director of Transportation**

Date: _____

CalTrans

**By: _____
Lewis Rivas, Resident Engineer**

Date: _____

7-8-08 D. ANDERSON

DIST	COUNTY	ROUTE	POST MILE	POST MILE	POST MILE
03	60	90	23.8/24.1	93	96.2

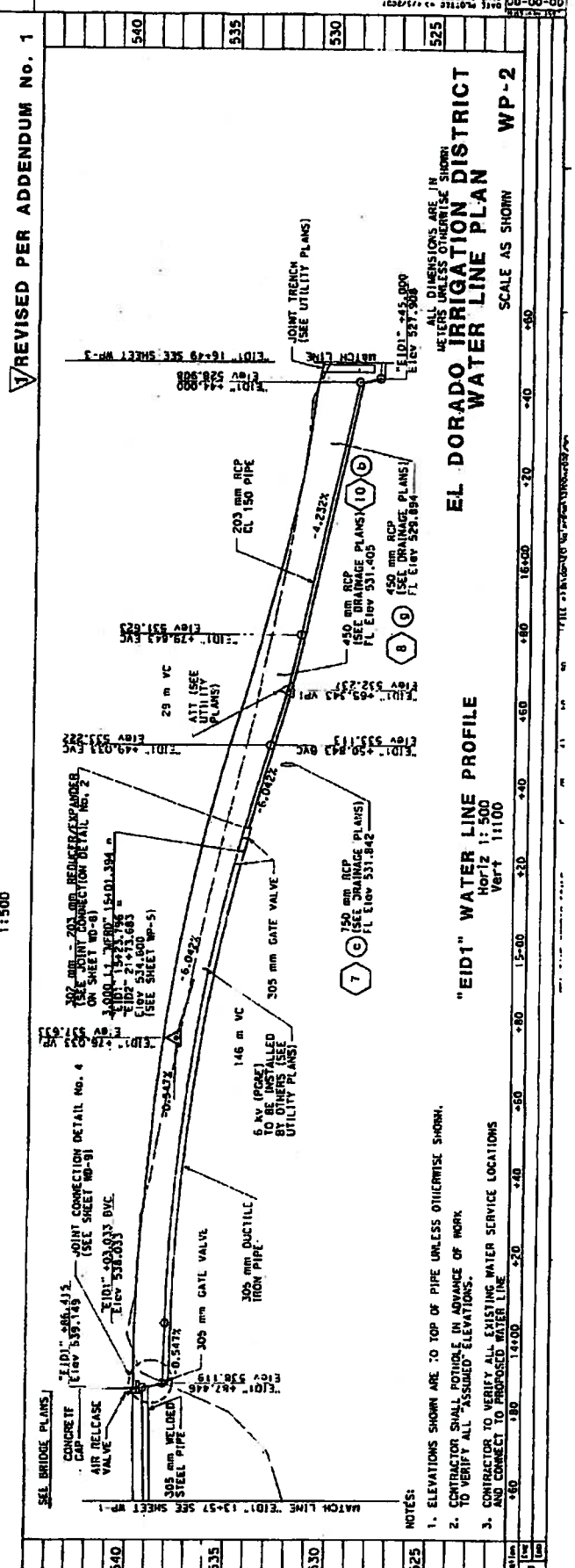
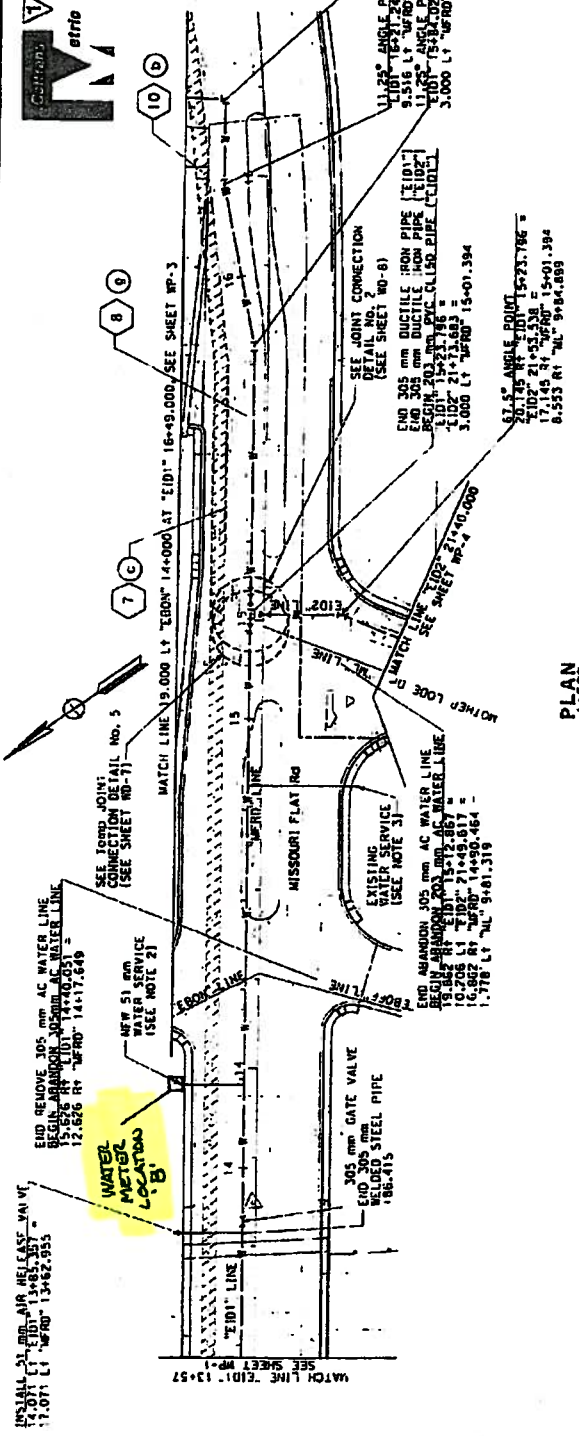
REGISTERED CIVIL ENGINEER
 No. 13,000
 State of California
 License No. 51367
 Expires 6/30/09

Professional Seal of David L. Anderson, Registered Civil Engineer, No. 13,000, State of California, License No. 51367, Expires 6/30/09.

Project: **EL DORADO IRRIGATION DISTRICT WATER LINE PLAN**

Prepared by: **DAVID L. ANDERSON**
 Checked by: **K. RHODES**
 Date: **7/8/08**

Scale: **AS SHOWN**



Station	Elev (ft)	Pipe Type
540	529.786	305 mm WELDED STEEL PIPE
540	529.394	305 mm DUCTILE IRON PIPE
535	529.786	305 mm GATE VALVE
530	529.786	305 mm DUCTILE IRON PIPE
525	529.786	305 mm GATE VALVE
525	529.786	203 mm RCP
525	529.786	450 mm RCP
525	529.786	150 mm RCP

STATE OF CALIFORNIA - DEPARTMENT OF TRANSPORTATION

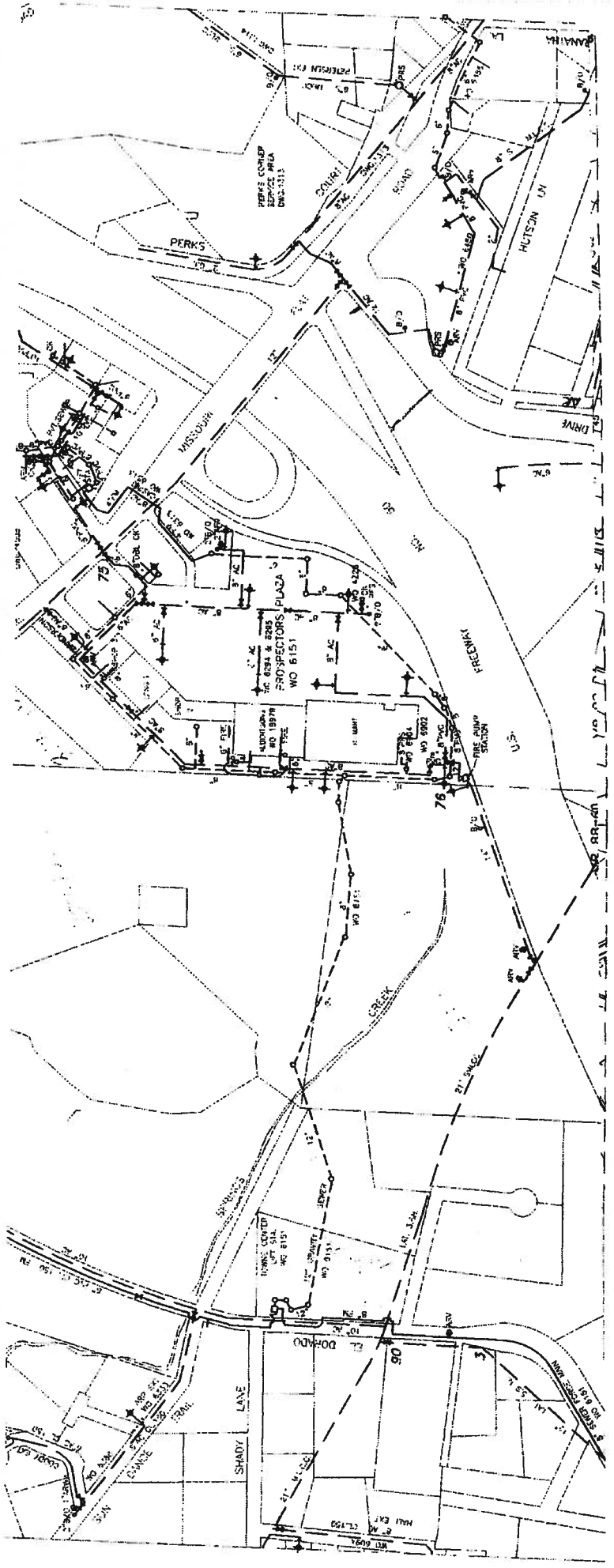
DESIGNED BY: MIKE BRINK - CID

CHECKED BY: K. RHODES

DATE: 7/8/08

REVISIONS:

NO.	DATE	REVISION
1	7/8/08	REVISED PER ADDENDUM NO. 1



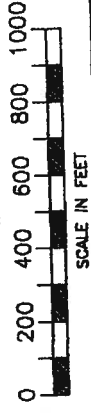
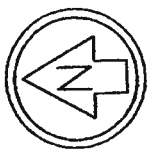
ZONE 7-GRAVITY WATER

EL DORADO
IRRIGATION DISTRICT
2890 MOSQUITO ROAD
PLACERVILLE, CALIFORNIA
95667



SYSTEM MAP

INDIAN CREEK		COLD SPRINGS		MOON HOLLOW	
1	2	3	4	5	6
SEC. 15	SEC. 14	SEC. 13	SEC. 22	SEC. 23	SEC. 24
EL DORADO					
MISSOURI FLAT AREA					
DRAWING NUMBER		SM-65			
MAR 29 2005					



SCALE IN FEET

SECTIONS: 13, 14, 15, 22, 23, 24

T. 10 N., R. 10 E.

I. BY: _____ DATE: _____



El Dorado Irrigation District

RELOCATION OF WATER SERVICE

**PROJECT: MISSOURI FLAT ROAD INTERCHANGE
TYPE OF SERVICE: IRRIGATION ONLY - ROADWAY**

The purpose of this acknowledgement is to support the request by CalTrans to transfer the existing ¾" water service currently serving the Park-N-Ride located at the intersection of Missouri Flat Road and Mother Lode Drive (Location ID 119446). The existing service line will terminate in a box with a locked meter stop valve. In order to activate service at this location in the future, payment of the facility capacity charges (FCCs) in place at that time will be required, plus applicable hardware costs (see map attached for current service location).

The ¾" water service will be relocated and set within a CalTrans right-of-way and provide irrigation at the west bound off-ramp located at Highway 50 and Missouri Flat Road (see map attached for new service location – Meter A). El Dorado County Department of Transportation will be responsible for payment of any and all charges associated with the relocation of the service. The billing account will be established in the name of El Dorado County Department of Transportation, 2850 Fair Lane, Placerville, CA 95667.

READ AND ACKNOWLEDGED:

**El Dorado County
Department of Transportation**

**By: _____
James W. Ware, P.E., Director of Transportation**

Date: _____

CalTrans

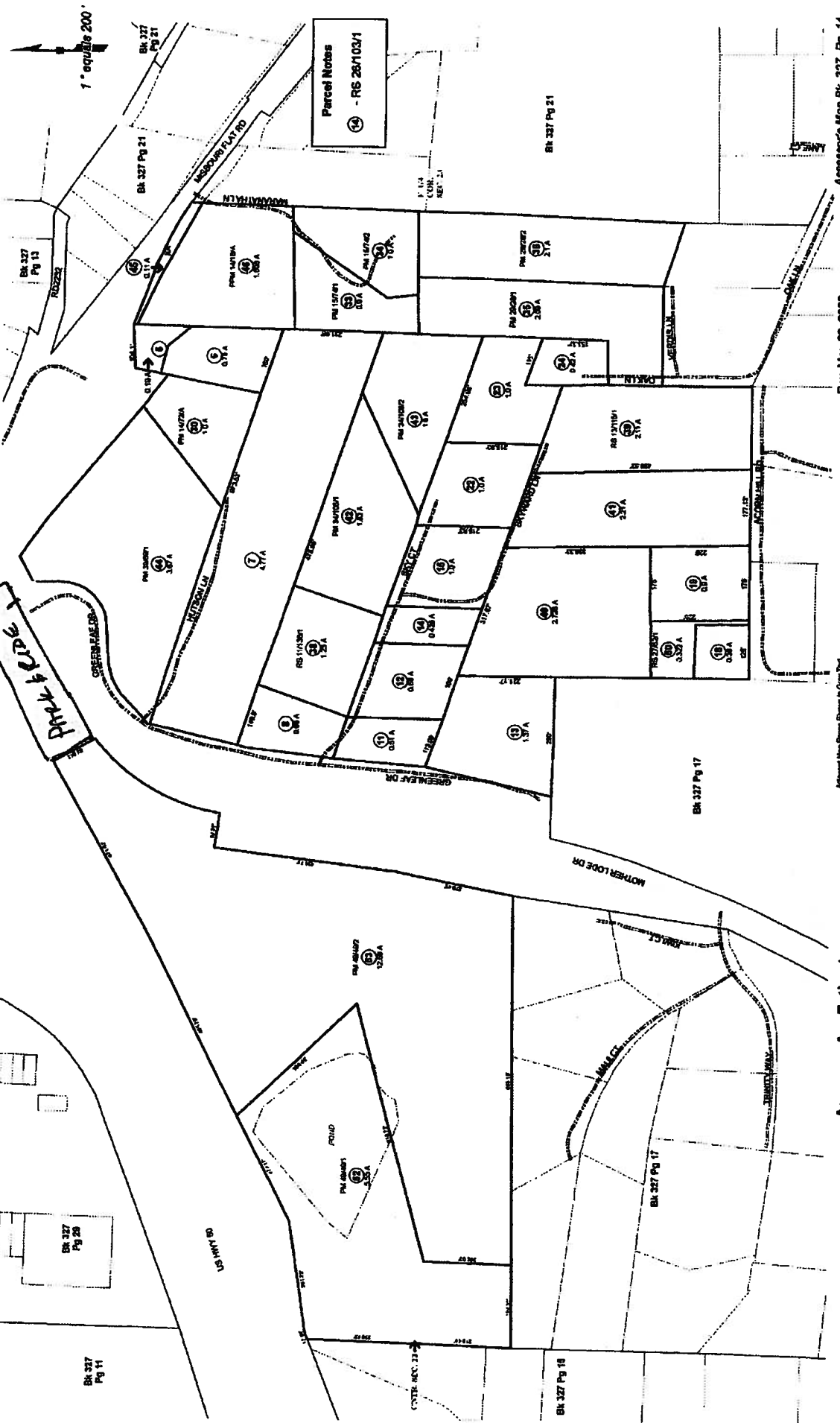
**By: _____
Lewis Rivas, Resident Engineer**

Date: _____

Park & Ride Service
Under Loc ID # 119446 - (327-140-00)

POR. E. 1/2 SEC. 23, T.10N., R.10E., M.D.M.

327:14



Assessor's Map BK. 327, Pg. 14
County of El Dorado, CA

Rev. Mar. 22, 2008

Aerial Map Placed Down to Overlay Data
Assessor's Parcel Numbers Shown in Outline

Acreages Are Estimates

THIS MAP IS NOT A SURVEY. It is prepared by the El Dorado Co.
Assessor's office for assessment purposes only.

7-8-08 P. ANDERSON

BLK	SHEET	DATE	BY	REVISION
03	ED	30	23.8.24.17	92 362

Office
 PUBLIC UTILITY EASEMENT
 PIGEE UTILITY EASEMENT
 PROPOSED WATER LINE
 TEMPORARY CONSTRUCTION
 EASEMENT (TCE)
 DRAINAGE SYSTEM NO.
 (SEE DRAINAGE PLANS)
 RESURFACE UNIT NO.
 (SEE DRAINAGE PLANS)

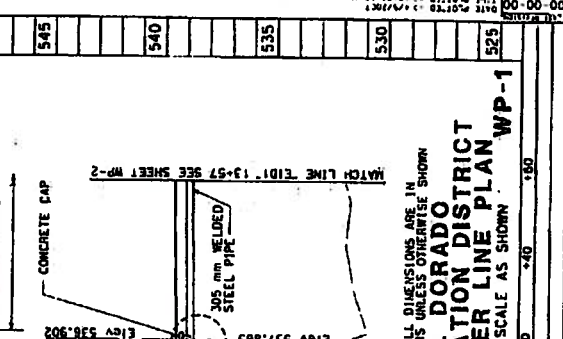
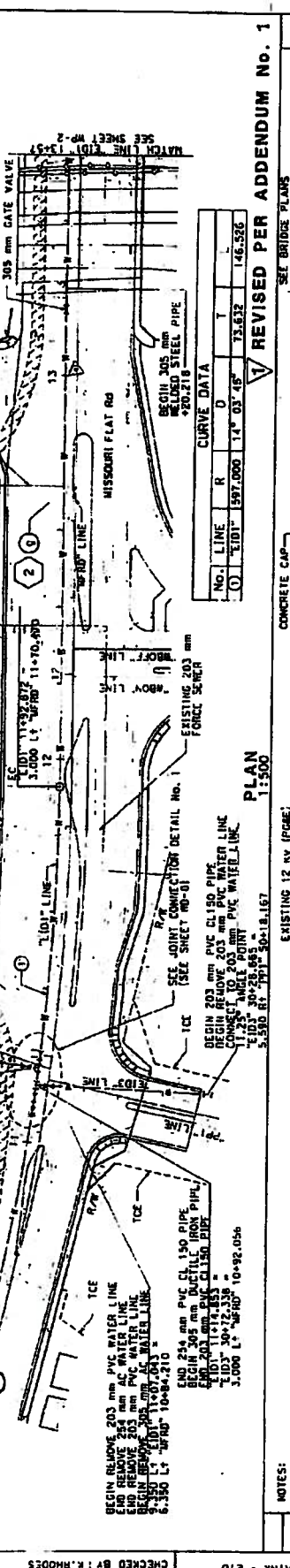
LEGEND:
 COMBINATION AIR VACUUM & AIR RELEASE VALVE UNLESS OTHERWISE NOTED
 BENDS
 BLOW-OFF ASSEMBLY
 CAP
 EXPANDER/REDUCER
 FIRE HYDRANT
 GATE VALVE
 TEE

CONNECT TO 254 mm AC WATER LINE
 VALVE CL 150 WATER
 BEGIN REMOVE 254 mm AC WATER LINE
 END REMOVE 254 mm AC WATER LINE
 BEGIN REMOVE 254 mm AC WATER LINE
 END REMOVE 254 mm AC WATER LINE
 BEGIN REMOVE 254 mm AC WATER LINE
 END REMOVE 254 mm AC WATER LINE
 BEGIN REMOVE 254 mm AC WATER LINE
 END REMOVE 254 mm AC WATER LINE

CONNECT TO 254 mm AC WATER LINE
 VALVE CL 150 WATER
 BEGIN REMOVE 254 mm AC WATER LINE
 END REMOVE 254 mm AC WATER LINE
 BEGIN REMOVE 254 mm AC WATER LINE
 END REMOVE 254 mm AC WATER LINE
 BEGIN REMOVE 254 mm AC WATER LINE
 END REMOVE 254 mm AC WATER LINE
 BEGIN REMOVE 254 mm AC WATER LINE
 END REMOVE 254 mm AC WATER LINE

CONNECT TO 254 mm AC WATER LINE
 VALVE CL 150 WATER
 BEGIN REMOVE 254 mm AC WATER LINE
 END REMOVE 254 mm AC WATER LINE
 BEGIN REMOVE 254 mm AC WATER LINE
 END REMOVE 254 mm AC WATER LINE
 BEGIN REMOVE 254 mm AC WATER LINE
 END REMOVE 254 mm AC WATER LINE
 BEGIN REMOVE 254 mm AC WATER LINE
 END REMOVE 254 mm AC WATER LINE

CONNECT TO 254 mm AC WATER LINE
 VALVE CL 150 WATER
 BEGIN REMOVE 254 mm AC WATER LINE
 END REMOVE 254 mm AC WATER LINE
 BEGIN REMOVE 254 mm AC WATER LINE
 END REMOVE 254 mm AC WATER LINE
 BEGIN REMOVE 254 mm AC WATER LINE
 END REMOVE 254 mm AC WATER LINE
 BEGIN REMOVE 254 mm AC WATER LINE
 END REMOVE 254 mm AC WATER LINE



NOTES:
 1. ELEVATIONS SHOWN ARE TO TOP OF PIPE UNLESS OTHERWISE NOTED.
 2. ALL "ASSUMED" AND UNKNOWN ELEVATIONS.
 3. CONTRACTOR TO VERIFY ALL NEW & EXISTING WATER SERVICE LOCATIONS AND CONNECT TO PROPOSED WATER LINE.

CONNECT TO 254 mm AC WATER LINE
 VALVE CL 150 WATER
 BEGIN REMOVE 254 mm AC WATER LINE
 END REMOVE 254 mm AC WATER LINE
 BEGIN REMOVE 254 mm AC WATER LINE
 END REMOVE 254 mm AC WATER LINE
 BEGIN REMOVE 254 mm AC WATER LINE
 END REMOVE 254 mm AC WATER LINE
 BEGIN REMOVE 254 mm AC WATER LINE
 END REMOVE 254 mm AC WATER LINE

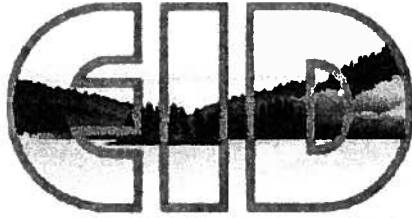
CONNECT TO 254 mm AC WATER LINE
 VALVE CL 150 WATER
 BEGIN REMOVE 254 mm AC WATER LINE
 END REMOVE 254 mm AC WATER LINE
 BEGIN REMOVE 254 mm AC WATER LINE
 END REMOVE 254 mm AC WATER LINE
 BEGIN REMOVE 254 mm AC WATER LINE
 END REMOVE 254 mm AC WATER LINE
 BEGIN REMOVE 254 mm AC WATER LINE
 END REMOVE 254 mm AC WATER LINE

CONNECT TO 254 mm AC WATER LINE
 VALVE CL 150 WATER
 BEGIN REMOVE 254 mm AC WATER LINE
 END REMOVE 254 mm AC WATER LINE
 BEGIN REMOVE 254 mm AC WATER LINE
 END REMOVE 254 mm AC WATER LINE
 BEGIN REMOVE 254 mm AC WATER LINE
 END REMOVE 254 mm AC WATER LINE
 BEGIN REMOVE 254 mm AC WATER LINE
 END REMOVE 254 mm AC WATER LINE

CONNECT TO 254 mm AC WATER LINE
 VALVE CL 150 WATER
 BEGIN REMOVE 254 mm AC WATER LINE
 END REMOVE 254 mm AC WATER LINE
 BEGIN REMOVE 254 mm AC WATER LINE
 END REMOVE 254 mm AC WATER LINE
 BEGIN REMOVE 254 mm AC WATER LINE
 END REMOVE 254 mm AC WATER LINE
 BEGIN REMOVE 254 mm AC WATER LINE
 END REMOVE 254 mm AC WATER LINE

CONNECT TO 254 mm AC WATER LINE
 VALVE CL 150 WATER
 BEGIN REMOVE 254 mm AC WATER LINE
 END REMOVE 254 mm AC WATER LINE
 BEGIN REMOVE 254 mm AC WATER LINE
 END REMOVE 254 mm AC WATER LINE
 BEGIN REMOVE 254 mm AC WATER LINE
 END REMOVE 254 mm AC WATER LINE
 BEGIN REMOVE 254 mm AC WATER LINE
 END REMOVE 254 mm AC WATER LINE

CONNECT TO 254 mm AC WATER LINE
 VALVE CL 150 WATER
 BEGIN REMOVE 254 mm AC WATER LINE
 END REMOVE 254 mm AC WATER LINE
 BEGIN REMOVE 254 mm AC WATER LINE
 END REMOVE 254 mm AC WATER LINE
 BEGIN REMOVE 254 mm AC WATER LINE
 END REMOVE 254 mm AC WATER LINE
 BEGIN REMOVE 254 mm AC WATER LINE
 END REMOVE 254 mm AC WATER LINE



El Dorado Irrigation District

NOTICE FOR PRESSURE REGULATORS

On September 11, 1995 the District's Board of Directors voted to no longer require the customer to purchase a pressure regulator as part of the meter installation. You should be aware that the District's waterlines can be subject to variable and/or high pressure without prior warning and/or notice.

For your protection, the District will install a pressure regulator at the time of meter installation, at the customer's request. A pressure regulator is a device used to control the speed and flow of water within a customer's service line. It adjusts the volume to a state of stability. It protects the customer's waterlines from the meter to the structure preventing damage that may be caused by a surge in pressure within water mains.

YES *I wish to have the District install a pressure regulator at the time the meter is installed.**

NO *I DO NOT wish to have the District install a pressure regulator at the time the meter is installed. I understand the District is not held liable for any damage caused by a change of pressure in the waterlines and it is my responsibility to install and pay for a pressure regulator to be installed, if needed, at a later date.*

**cost is included in cost estimate*

I have read and understand the above.

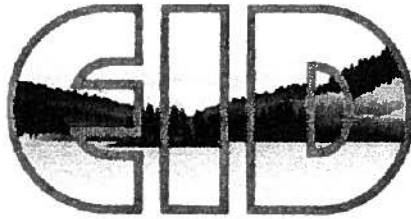
*Name: El Dorado County Department of Transportation
APN: Roadway – Irrigation Only (two locations-Meters A & B)
WO#: _____*

James W. Ware, P.E., Director of Transportation

Date

Development Services

Date



El Dorado Irrigation District

SERVICE APPLICATION

Property Owners Name: El Dorado County of Transportation Application Date: _____

APN #: Roadway – Irrigation only – (see attached map for meter locations – Meter A & Meter B to be set in CalTrans right-of-way).

Meter Size: (2) 3/4" meters and pressure regulators

Work Order Number: _____

Making the application is the OWNER AGENT (Circle One) Phone #: _____

Applicant (I) hereby make application for water/sewer/recycled service, subject to the current Board Policies of the District. Applicant understands that the District's responsibility for maintenance extends to the meter and the responsibility beyond the meter, including the pressure regulator, is the applicant's. (If service is connected to a private line, the District's responsibility stops at the tap in the District's main).

1. ____ (Initial) - I understand that all applicable fees paid are not refundable or transferable unless they meet the criteria set forth in Board Policy 9020 with one exception; time and material deposits.
2. ____ (Initial) - **The meter/s will be installed upon acceptance of this application, if in compliance with Board Policy 9020.** The District guarantees all workmanship and materials furnished in the meter installation to be free from defects for a period of one (1) year from the date of installation. After one (1) year, the District will maintain the meter. The maintenance beyond the meter, including the pressure regulator and back flow assembly, is the Applicant's. If service is connected to a private line, the District's responsibility stops at the tap in the District's main.
3. ____ (Initial) - I understand the **water** service billing for basic charges and any consumption will begin on the day the meter is installed.
4. XX (Initial) - I understand the **sewer** service billing will begin after the District's final sewer inspection (residential) or once the Certificate of Occupancy is signed (commercial, multi-family). I have received a copy of the connection requirement.
5. ____ (Initial) - I understand that utility billings are the responsibility of the **property owner**. This remains in effect until the Utility Billing department is notified of a change in ownership. Roadway irrigation only – account to be established in the name of El Dorado County Department of Transportation.
6. ____ (Initial) - I received a copy of the 4-Stage Water Management Plan and agree to abide by the restrictions.
7. ____ (Initial) - I have received a copy of the Underground Service Alert handout.

Name: El Dorado County of Transportation
APN: Roadway – Irrigation Only (Meter A & Meter B)
WO#: _____

- 8. XX (Initial) - **Flat Rate Fee Installation:**
The cost of the meter installation meets the requirements for a Flat Fee installation. **FLAT FEE DEFINITION:** Meter installation with no more than 10 feet of service line or where a meter outlet has been provided. **If there is no outlet, time and materials will be charged to provide one.**
- 9. _____ (Initial) - **Time and Material Deposits:**
A time and materials deposit has been included with the total charges. Actual costs will be determined after the work has been completed. All charges above the estimate will be billed to the applicant. Should actual costs be less than the estimate, a refund will be made to the applicant. The DEPOSIT is \$7,000.00+/-.
- 10. _____ (Initial) - **Commercial/Industrial/Agricultural Accounts/Parcels with an existing well -**
I understand that the meter may be installed locked-off until the District inspects for backflow prevention compliance. **Installation of backflow devices is required.**
- 11. XX (Initial) - I understand that water meters will not be installed until the final map has been approved; new parcel number/s and address/es have been assigned; approval is obtained from the El Dorado Irrigation District Inspection Department; all applicable fees paid; and all other conditions relating to services satisfied. **It is the property owner’s responsibility to notify the District upon final map. (Subdivisions)**
- 12. _____ (Initial) - I understand water meters will be released to the field and service will be activated in the name of El Dorado County Department of Transportation upon completion of Phase 1A of the project.

Contract Administrator: The County Officer or employee with responsibility for administering this Agreement is Adam Bane, Supervising Civil Engineer, Roadway Design Division, Department of Transportation, or successor.

Applicant agrees that the meter remains the property of the District and that access to the meter is available at all times; access shall not be hampered by fencing or other obstructions. Should access become obstructed, the District may discontinue water service until corrections are made or may relocate the meter at applicant's expense. Applicant agrees to pay for meter repairs caused by misuse and/or additional Facility Capacity Charges (FCCs) as defined in Board Policy 9020.

EL DORADO COUNTY
DEPARTMENT OF TRANSPORTATION

James W. Ware, P.E., Director of Transportation

EL DORADO IRRIGATION DISTRICT

Development Services