

County El Dorado Department of Transportation



What We Do...



Traffic Engineering



Bridge Maintenance



Capital Improvements



Land Development



Permits / Inspection



Drainage



ROW



County Fleet



Road Maintenance



Snow Removal

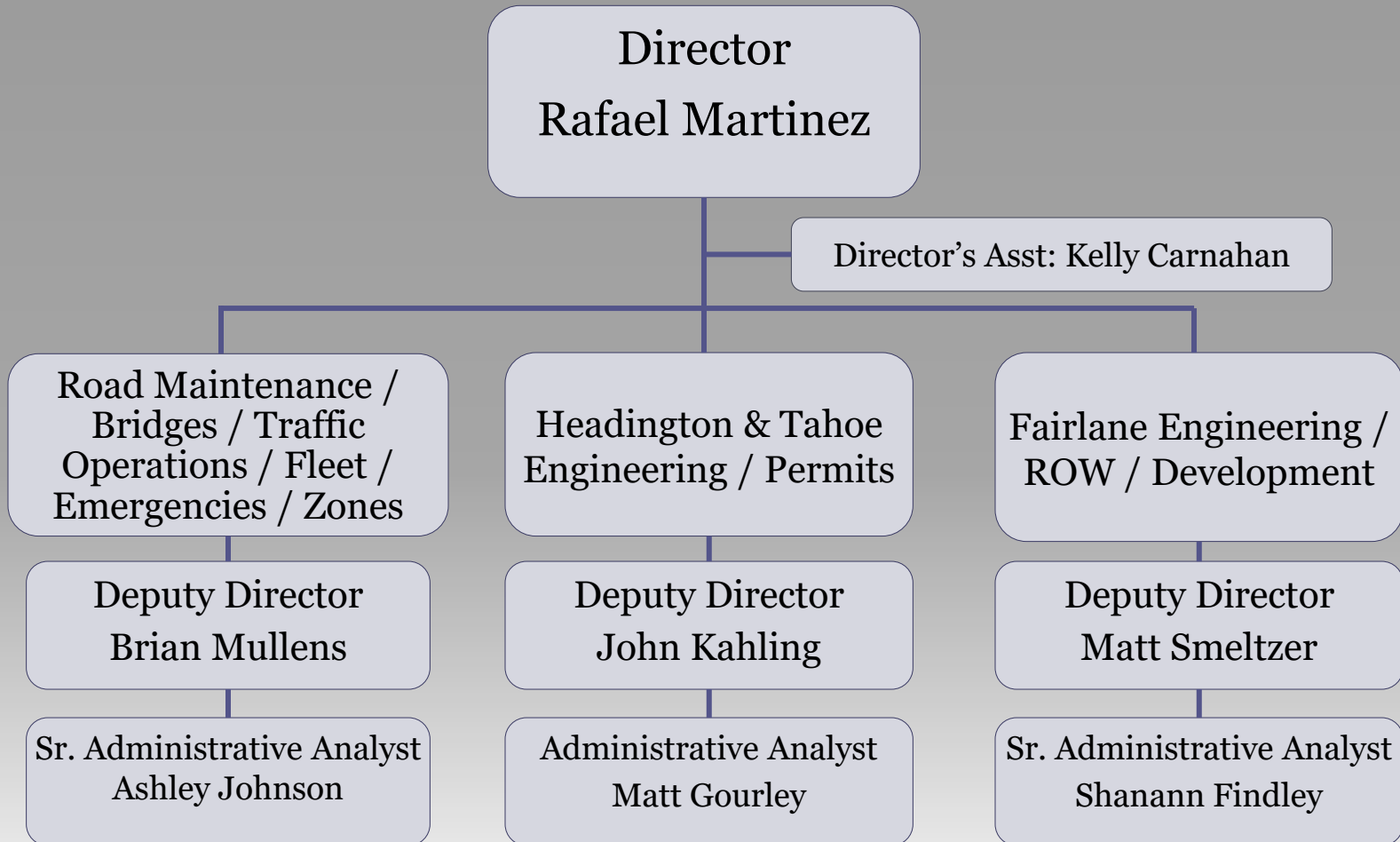


Tahoe



23-024632 of 10
Management

Department of Transportation



Department of Transportation

Maintenance and Operations

- Roadway Repair and Rehab
 - Bridges / Culverts / Roads
- Fleet
 - Purchase / Repairs / Environmental
- Snow Removal
- Drainage
- Traffic Engineering
 - Speed Limit / Stop Signs / Signals
 - Traffic Studies
- Emergencies
- Vegetation Management



What does DOT Maintain

	Units	Quantity
Box Culverts	Ea	100+
Bridges	Ea	76
Ditches	Miles	950
Culverts	Ea	10,000+
Guardrails	Feet	37,000
Pavement Markers	Miles	138
Roads	Miles	1083
Sidewalks	Miles	70
Signalized Intersections	Ea	57
Signs	Ea	15,500
Timber Walls	Feet	1,600
Striping	Miles	820

Department of Transportation

Engineering

- Planning/Design/Grants
 - Bridges
 - Roads
 - Interchanges
 - Transportation(Bike and Ped)
- Construction Management (All of the Above)

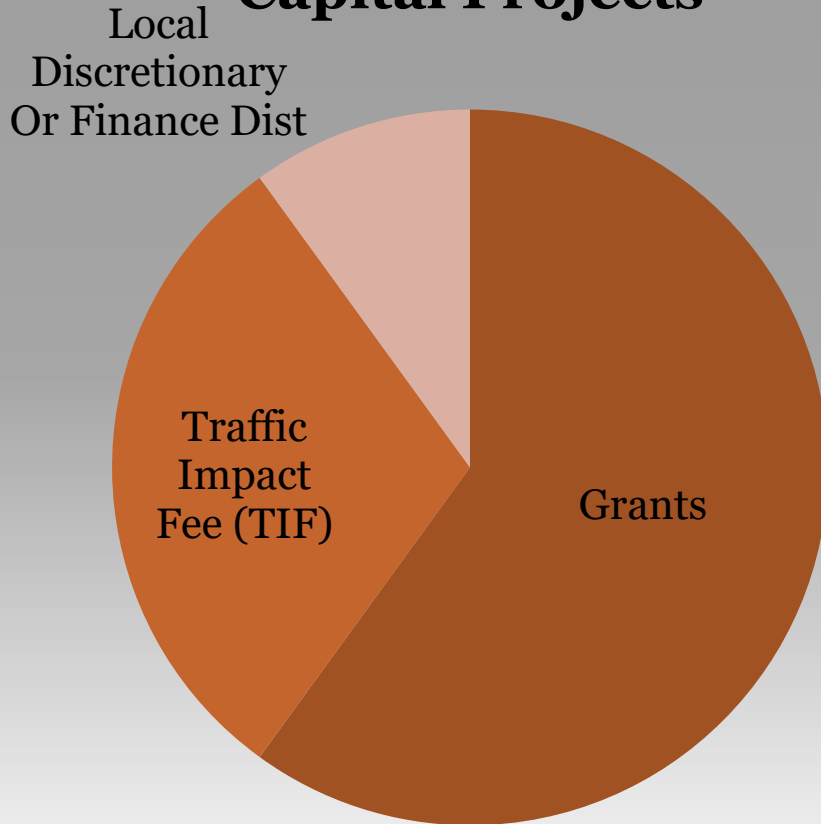


Development/Right of Way/Environmental

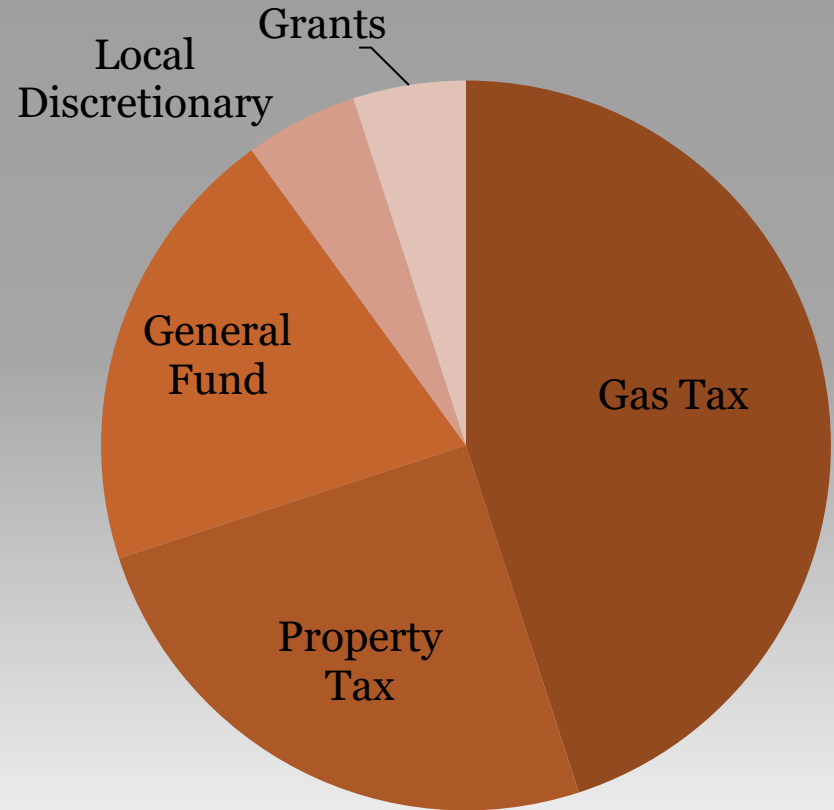
- Permits
- Property Acquisition
- California and Federal Environmental
- Plan Check and Inspection of all Right of Way Entries
- Coordinate with Utilities
- Materials Testing and Labs

Transportation Budget 101

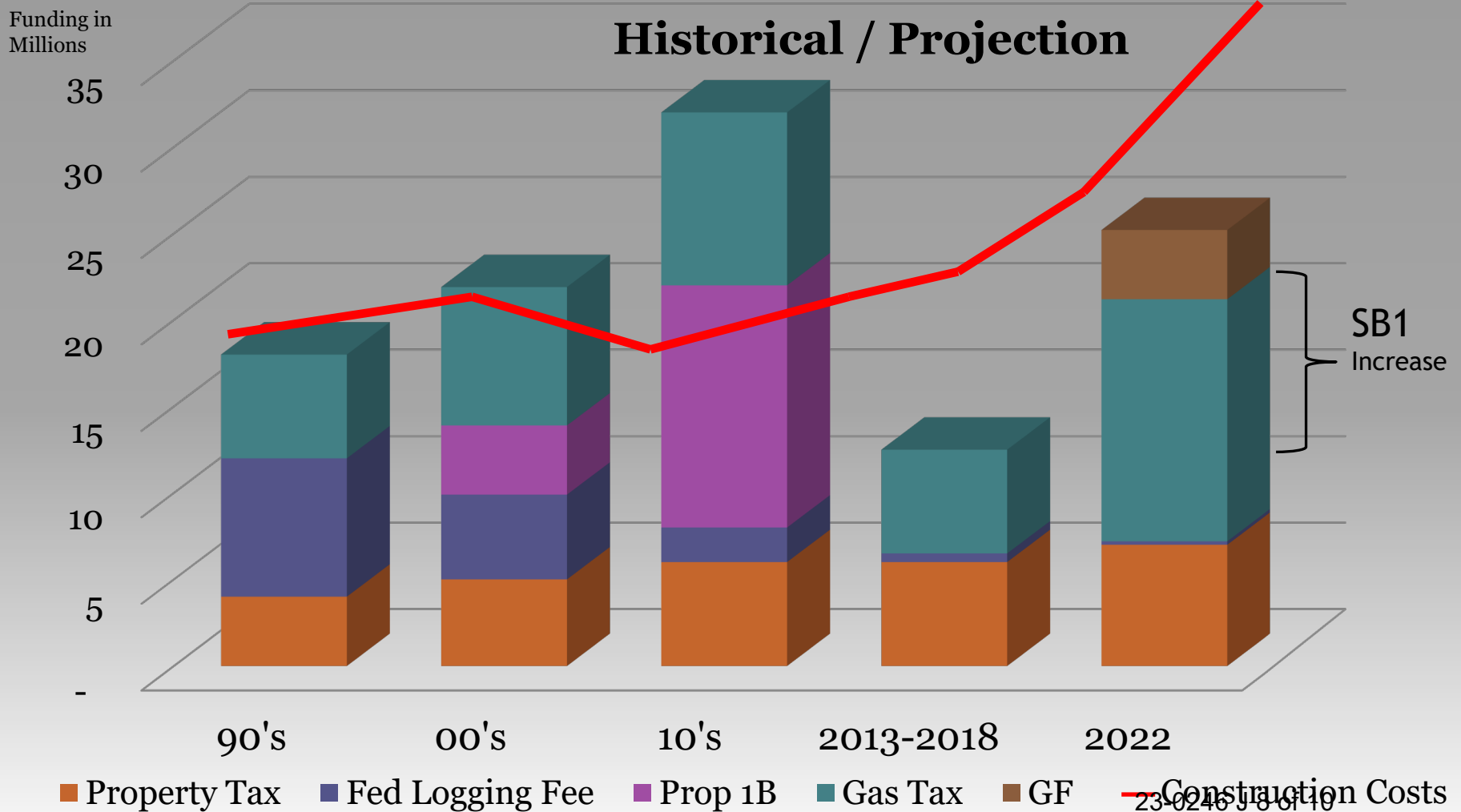
Funding for Capital Projects



Funding for Maintenance



Transportation Budget



El Dorado County Transportation SB1 List

- Complete Greenwood Road (carryover from Summer 2022)
- Complete traffic markings in the Cold Creek Subdivision in SLT (carryover from Summer 2022)
- South Upper Truckee Road
- Mormon Island and Saint Andrews Subdivision
- Cameron Park Drive (Green Valley to Country Club Drive)
- Pleasant Valley Road (Diamond Springs to Bucks Bar Road), Lindberg Subdivision and Camino Heights Subdivision
- Green Valley Road (County line to Cameron Park Drive)
- Ponderosa Road and Wild Chaparral Drive (pending coordination with CIP Project)

El Dorado County Transportation

Websites:

- **<http://www.edcgov.us/DOT>**
- **<https://www.facebook.com/eldoradocountyroads>**

Connect With Us:

- **Email - road.maintenance@edcgov.us**
- **Phone – (530) 642 - 4909**