

CEDAC Quarterly Business Showcase

Community & Economic Development Advisory Committee



July 30, 2013

89 Georgetown Divide R.C.D.
2 El Dorado County R.C.D.

EL DORADO and GEORGETOWN DIVIDE
RESOURCE CONSERVATION DISTRICT
EL DORADO COUNTY, CALIFORNIA

APRIL 1982
SCALE 1:50,000
0 5 10 MILES

Source:
Base map prepared by SCS, WISC. Conto Unit from 1:126,720 General Highway maps.
U.S. DEPARTMENT OF AGRICULTURE SOIL CONSERVATION SERVICE 1004-KC PORTLAND, OR 97202

M7-OL-24200

CEDAC Business Showcase

SCHILLING
ROBOTICS



deep ocean robotics
July 31, 2012

stem
express

biomedical research
October 23, 2012

 **Bloo** solar

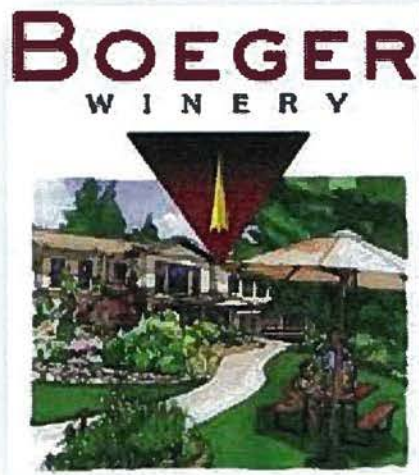
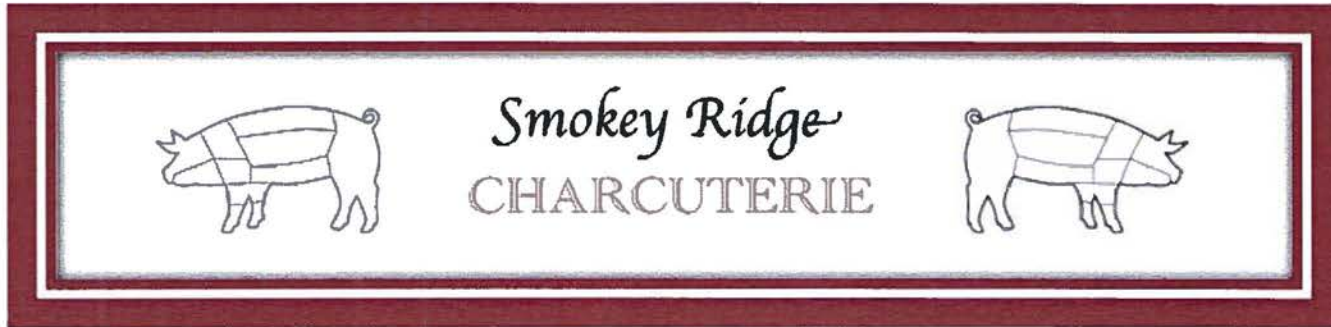
clean renewable energy
January 29, 2013

13-0876 C 2 of 32

CEDAC Business Showcase

The Legacy Farmers

April 23, 2013





89 Georgetown Divide R.C.D.
 2 El Dorado County R.C.D.

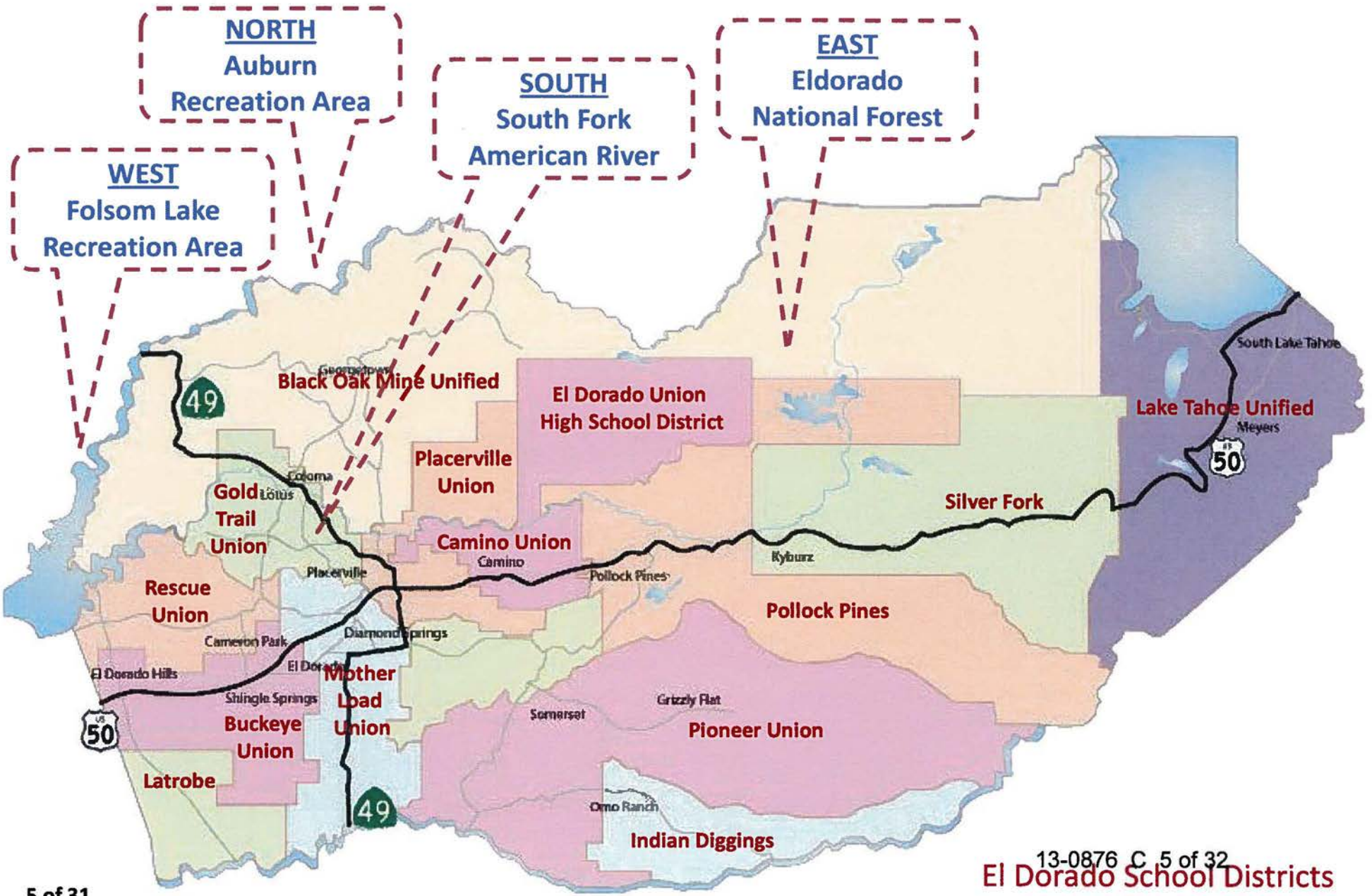
EL DORADO and GEORGETOWN DIVIDE
 RESOURCE CONSERVATION DISTRICT
 EL DORADO COUNTY, CALIFORNIA

APRIL 1982
 0 5 10 MILES
 SCALE 1:500,000

Source:
 Base map prepared by SCS, WISC Carte Unit from 1:125,000 General Highway maps.
 U.S. DEPARTMENT OF AGRICULTURE SOIL CONSERVATION SERVICE WASH. DC. 20250

MT-OL-24200

Recreational Opportunities



Georgetown communities reflect Mother Lode history



GEORGETOWN DIVIDE COMMUNITIES

GEORGETOWN – “Pride of the Mountains,” “Gateway to the Rubicon”

Zip code 95634. Named after George Phipps, who, in 1849, explored upstream from Coloma and followed what he named Empire Creek. He camped at the top of the creek and later built a cabin there.

GARDEN VALLEY

Zip code 95633. Settled by miners in 1849. Named Garden Valley when 4th of July celebration dinner included vegetables from two local gardens. Post Office established 1852.

COOL

Zip code 95614. Established 1850 – Named after Rev. Aaron Cool, the “Preacher on Horseback,” who eventually became the community minister.

PILOT HILL

Zip code 95664. Named by explorer and topographical engineer Captain John Fremont in 1844. Mining camp established 1849. A. J. Bayley, Vermont native, purchased 640 acres in Pilot Hill and built a three-story Southern-style mansion with 24 rooms, intending that it would serve as a hotel and stage stop. At the time, the Fremont map going through Pilot Hill was favored as the route for the transcontinental railroad. Theodore Judah’s survey proved a less expensive route to the north, along present-day I-80, and the Bayley House never realized its potential. Bayley became a member of the California Assembly and later, county supervisor. The Bayley House and 10 acres was donated to El Dorado County by Alexander & Baldwin, of Honolulu, when the company was proposing a master planned community in Pilot Hill in the 1990s. The County later turned the property over to the Georgetown Divide Recreation District for \$1. A subcommittee of the recreation district is trying to raise money to save the Bayley House.

GREENWOOD – “Beyond Cool”

Zip code 95635. Established 1851. Named after Caleb Greenwood, Rocky Mountain fur trapper and guide.

KELSEY

Post Office closed. Kelsey was named after Benjamin Kelsey. He and his wife, Nancy, came to California in 1841 with the Bartleson Bidwell party. They were the first American settlers to cross the Sierras. Came to Kelsey in 1848.

The post office opened in 1856 and was recently closed. Customers are now served through the Placerville Post Office, zip code 95667. The Kelsey zip code was 95643.

... and the spirit continues

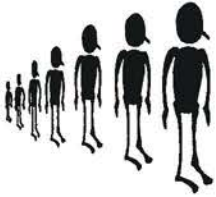


Painting of historic Georgetown inside Georgetown Post Office by local artist Betsy Anderson Aufdenkamp



Looking west from Placer Street to the intersection with Highway 193, the historic Georgetown Hotel is on the left. The Corner Kitchen, originally a Wells Fargo building, is on the right. After several fires, Main Street was widened to 100 feet. Mid-street parking is a tradition that was started to create parking for logging trucks so their drivers could stop for breakfast in town.

13-0876 C 8 of 32



Georgetown Divide Population Estimates

Based on U.S. Postal customers, 2.6 multiplier*

	<u>1991</u>	<u>1997</u>	<u>1998</u>	<u>2000</u>	<u>2003</u>	<u>2012</u>
Cool	3,435	4,365	4,443	4,644	4,805	5,005
Pilot Hill	1,214	1,383	1,368	1,381	1,622	1,690
Greenwood	1,014	1,232	1,271	1,238	1,313	1,451
Georgetown	3,934	4,321	4,303	4,316	4,501	4,449
Garden Valley	<u>1,326</u>	<u>3,461</u>	<u>3,411</u>	<u>3,479</u>	<u>3,715</u>	<u>3,112</u>
TOTAL	10,923	14,762	14,796	15,058	15,956	15,707
Cool-PH-GW	5,663	6,980	7,082	7,263	7,740	8,146
GT-GV	5,260	7,782	7,714	7,795	8,216	7,561

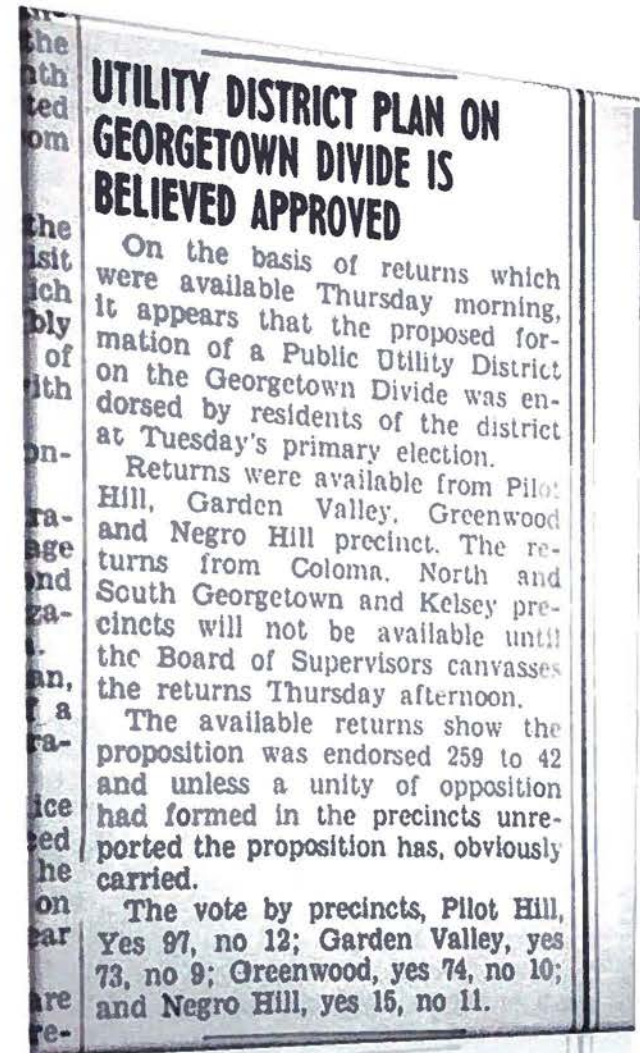
- **El Dorado County population 1991: 130,181**
Georgetown Divide percent of El Dorado County population (11,000+130,200): 0.084.
- **El Dorado County population 2003: 168,822-169,119**
Georgetown Divide percent of El Dorado County population (16,000+169,000): 0.095.
- **El Dorado County population July 2011: 180,938**
Georgetown Divide percent of El Dorado County population (16,000+181,000): 0.088.

19-0876 C 9 of 32

Georgetown Divide Public Utility District

In 1852, the El Dorado, Pilot and Rock Creek Canal Companies became one of the first water purveyors in the State of California. It was created to serve the many mines on the Divide. Later, it served agriculture and lumber industries. Other water companies formed through the years.

In 1946, a group of farmers from Cool organized Georgetown Divide Public Utility District, which was approved by vote in the June election. GDPUD acquired the historic ditch system and water rights.



Voters approve formation of Georgetown Divide Public Utility District,
Mountain Democrat, June 6, 1946

Georgetown Divide Public Utility District

Stumpy Meadows Reservoir, located 19 miles east of Georgetown, was completed in 1962. It allowed piped treated water to be delivered to GDPUD customers. Before the reservoir was built, customers pumped water out of the ditches.

GDPUD has:

- **75 miles of ditches and pipelines**
- **Stumpy Meadows Reservoir, 20,000 acre feet impoundment on Pilot Creek**
- **Irrigation, domestic and commercial water supplies**
- **2 treatment plants**
- **On-site wastewater disposal**
- **Approximately 3,500 customers**



Black Oak Mine Unified School District

Black Oak Mine Unified School District is the only K-12 district besides South Lake Tahoe in El Dorado County. There were a number of small elementary schools on the Divide since the mining days. To get a high school education, students went to Placerville where they boarded. Later, they were bused to Auburn or Ponderosa High.

Assemblyman Eugene Chappie, from Cool, authored special legislation to create a small rural K-12 district. Black Oak Mine consolidated the smaller districts on the Divide and then built Golden Sierra High School in Garden Valley. The first graduating class was in 1981.



Georgetown Elementary children learn about growing their own food in the school garden

13-0876 C 12 of 32

Black Oak Mine Unified School District

District population: 1,700

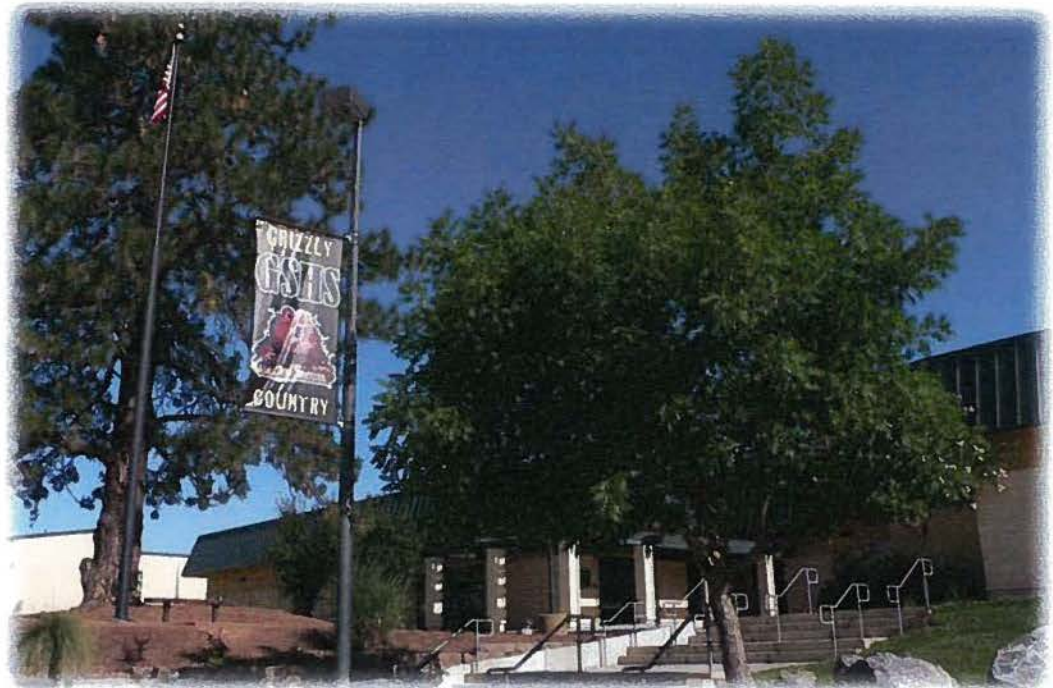
- 9 schools and educational programs
- Georgetown Elementary
- Northside Elementary
- Golden Sierra Junior High School
- Golden Sierra High School
- Otter Creek School
- Divide High School
- Independent Study
- American River Charter School
- EDCOE

Golden Sierra High School: 400

- Award winning academic, vocational and athletic programs
- Base API: 807
- Vocational education:
 - Auto/Metals
 - Construction – Ultimate Cutting Edge
 - First Responder
 - CADD/Video Production

18 sports

- including rodeo and skiing/snowboarding



Georgetown Divide Recreation District

The Georgetown Divide Recreation District is 25 years old this year in 2013. In 1984, the Divide Recreation District Advisory Committee was formed, composed of residents who were actively supporting different forms of recreation throughout the Divide. A zone of benefit was created, along with a budget based on an apportionment of property tax revenues.

In order to provide the level of services and facilities desired by Divide residents, the committee proposed formation of an independent recreation district. In November 1988, the district was formed by a vote of the people and a board was elected.

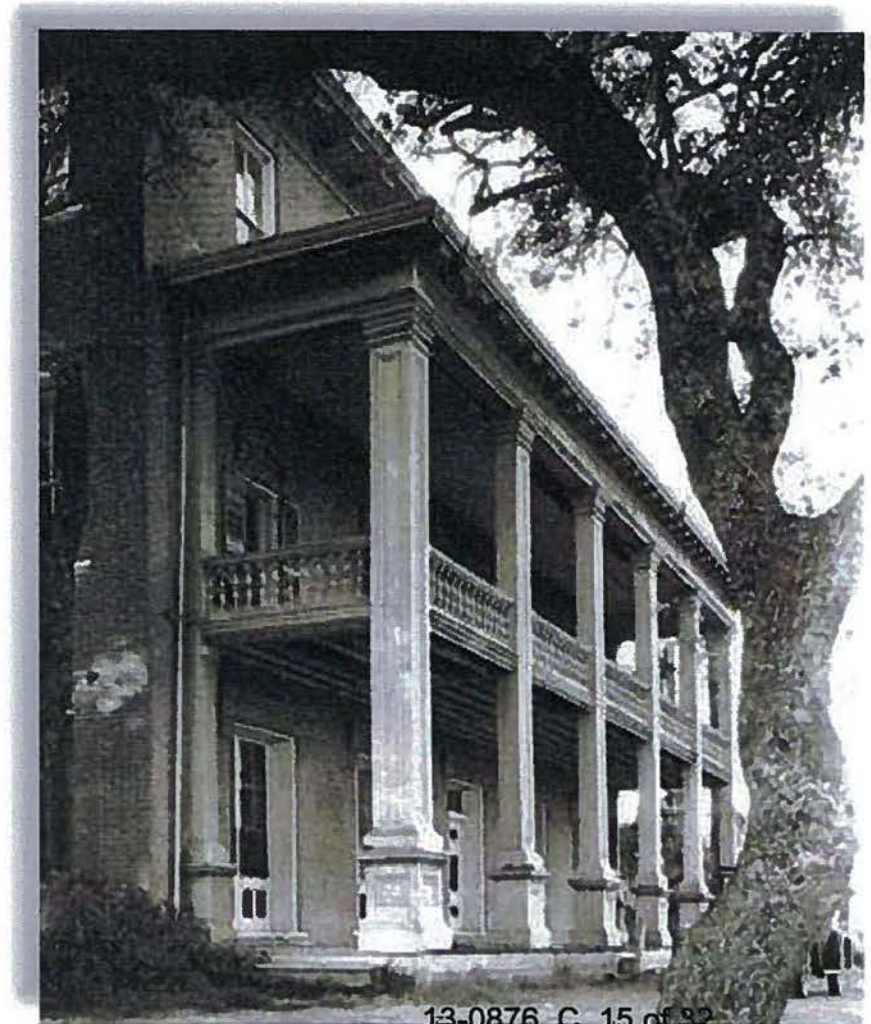


CCC crew at Greenwood constructed the Tot Lot at The Bayley House Park

Georgetown Divide Recreation District

GDRD owns and operates parks throughout the Divide, provides classes, activities and athletics, and is raising money to keep the historic Bayley House, which it owns, as a community and county asset.

Currently, GDRD is working on a grant project for an aquatic facility and recreation center and feasibility studies for a spray park at Garden Valley Park and retrofitting the Bayley Barn for a recreation center. Work has been completed on the Georgetown Airport Trails with El Dorado Equestrian Trails Foundation volunteers, and a financing agreement with the Masons was approved to acquire the Georgetown Community Center.



13-0876 C 15 of 32

Georgetown Divide district-wide taxes

Proposition 13's 1% Property Taxes Generated within the geographical area contiguous with the boundaries of the Georgetown Divide Public Utility District

2013/14 Prop 13 General Tax Levy: approximately \$11 million

Source: El Dorado County Auditor's Office

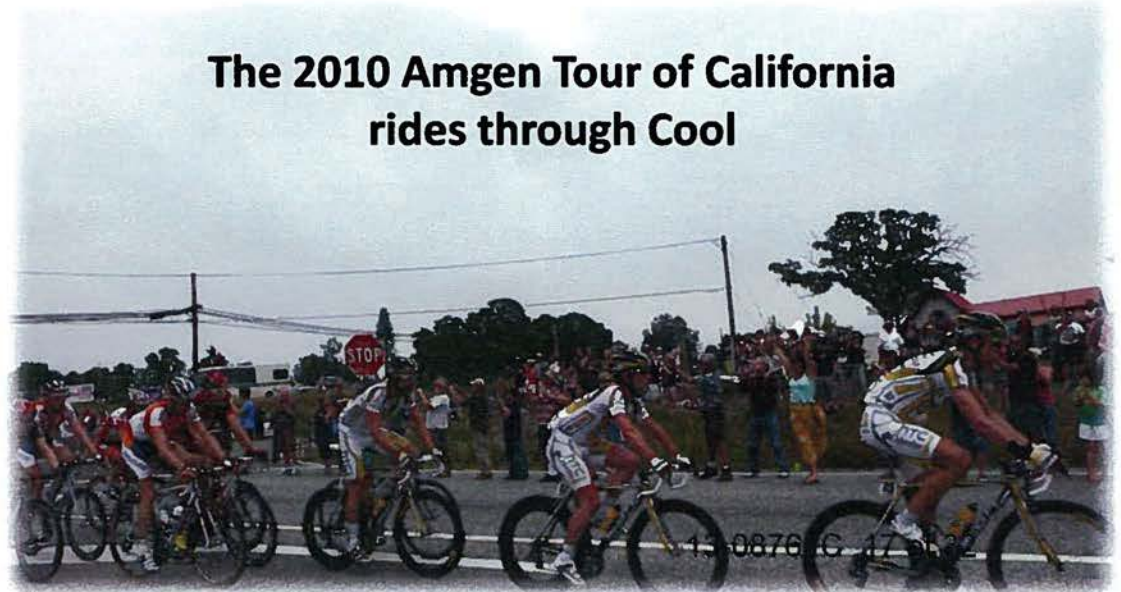
Georgetown Divide Transient Occupancy Tax

The Transient Occupancy Taxes from the communities of Georgetown, Kelsey, Pilot Hill, Cool and Garden Valley from April 1, 2012, through March 31, 2013, amount to **\$19,351.42.**

Greenwood was not included because it has no businesses that generate TOT.

Source: El Dorado County Office of Treasurer/Tax Collector

The 2010 Amgen Tour of California rides through Cool



If you own a home in Georgetown, you will pay these taxes

General taxes

- Prop 13 General Tax Levy 1.0000
- Black Oak Mine Bond 2006
- Los Rios College Bond 2002
- Los Rios College Bond 2008

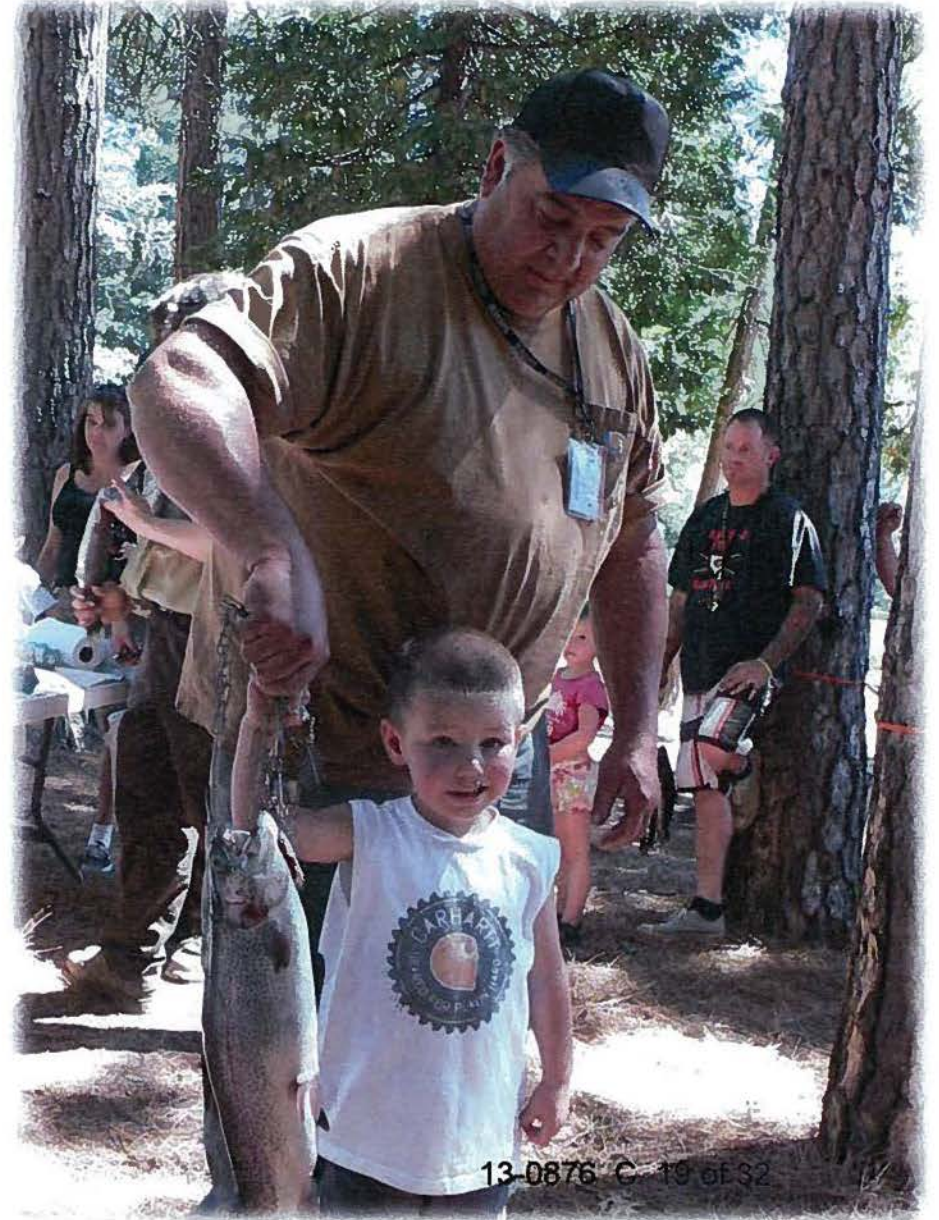
Special taxes

- CSA#9 Cemetery Zone
- CSA#10 Solid Waste
- CSA#10 Liquid Waste
- CAS10 House Hazard Waste
- Library Tax Zone G
- Georgetown Fire District (634)
- Georgetown Fire District (639)
- CSA7 Ambulance Western Slope



Recreational tourism and family fun

Jacob Martinez, age 3, won the prize for biggest fish at the 46th annual Georgetown Kids Fishing Derby at Lake Walton





89 Georgetown Divide R.C.D.
 2 El Dorado County R.C.D.

EL DORADO and GEORGETOWN DIVIDE
 RESOURCE CONSERVATION DISTRICT
 EL DORADO COUNTY, CALIFORNIA

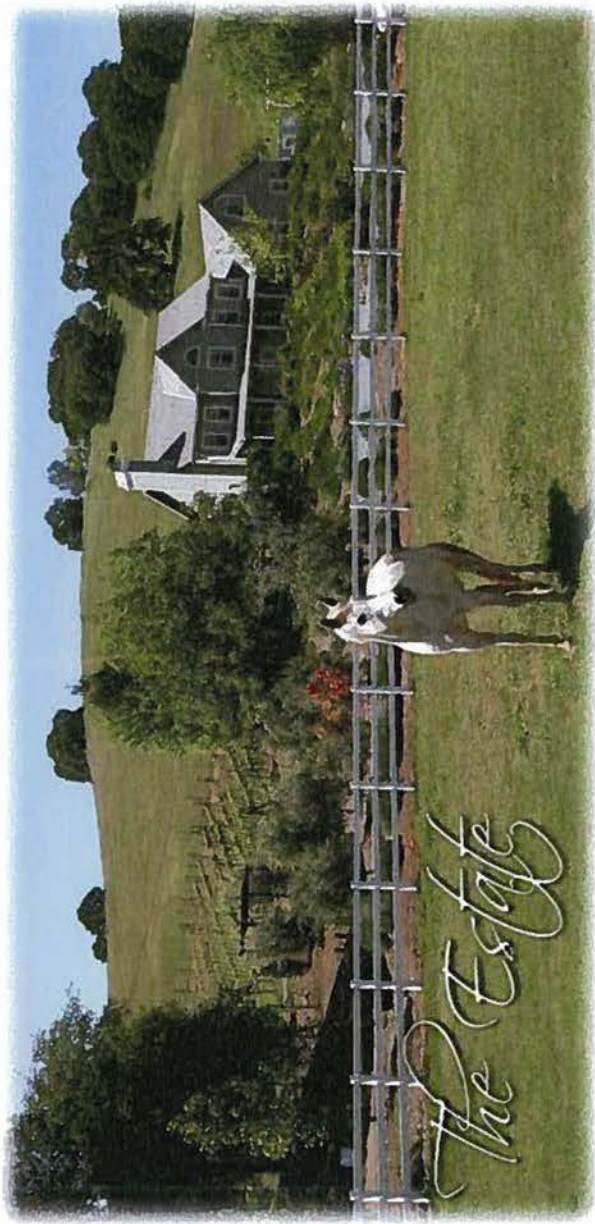
APRIL 1962
 0 5 10 MILES
 SCALE 1:500,000

Source:
 Base map prepared by SCS, WYSC Carto Unit from 1:125,720 General Highway maps.
 U.S. DEPARTMENT OF AGRICULTURE SOIL CONSERVATION SERVICE via SCS PORTLAND OR 972

MT-CL-24200



Enchanted April Inn



The HINDQUARTER
HOUSE
STEAK HOUSE & COCKTAILS
4400 HWY 49
865-8058

The HINDQUARTER
HOUSE
STEAK HOUSE & COCKTAILS



Rafferty's
QUALITY HOME-MADE
Candies

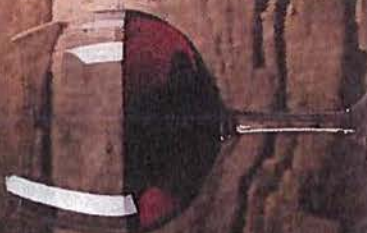
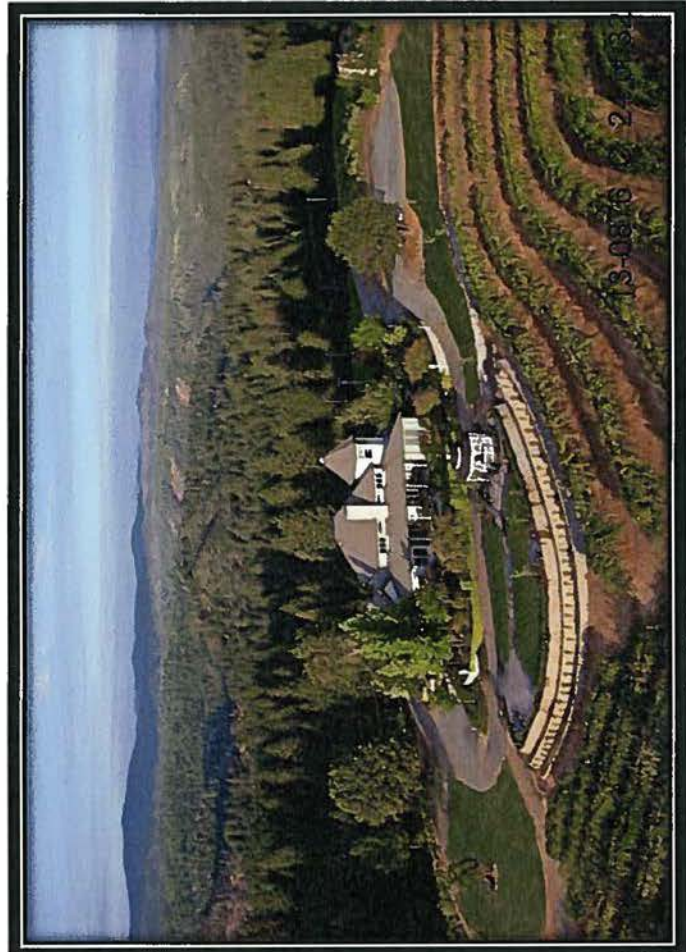
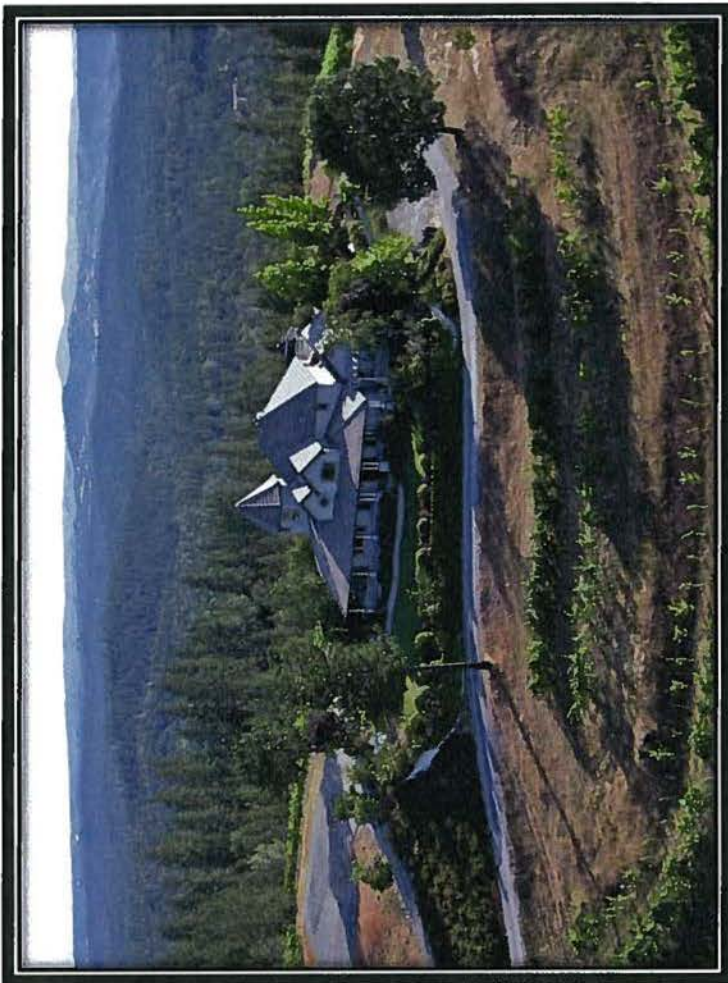
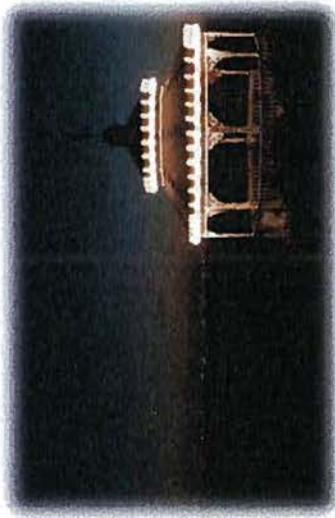
Call me
Rafferty's

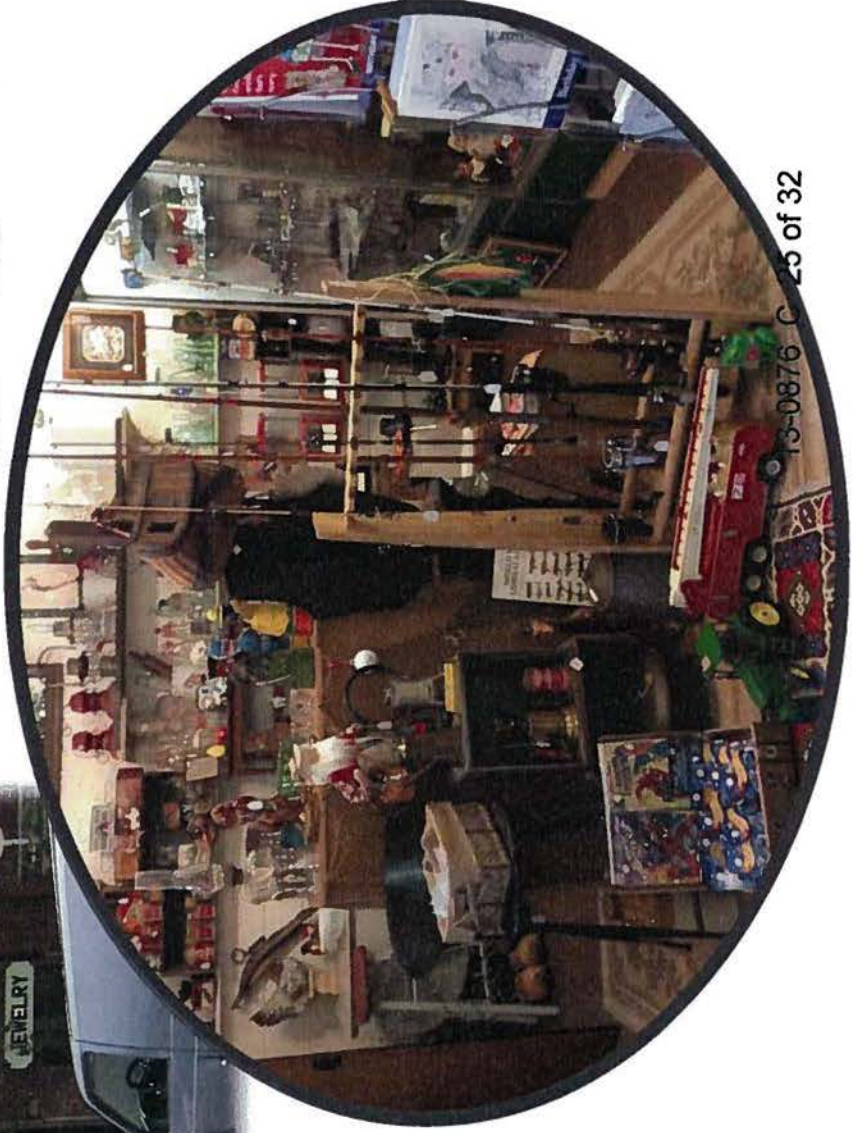
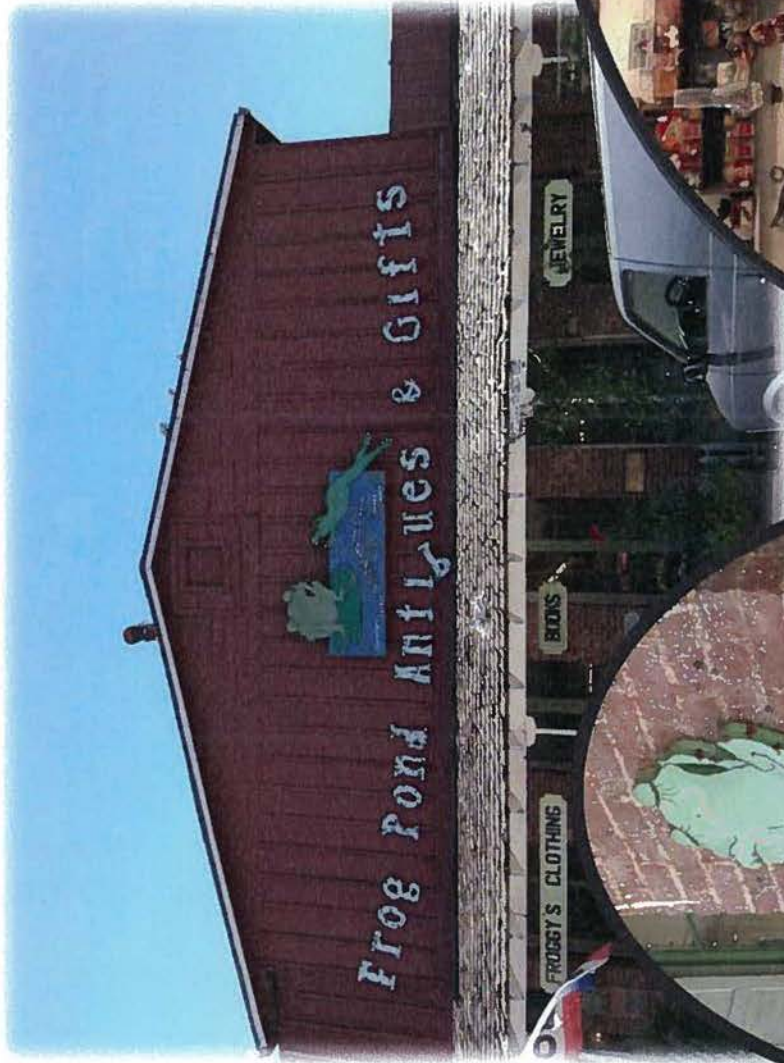
(530) 333-1633

4862 Black Oak Mine Rd. • Garden Valley, CA 95633
www.RaffertysCandies.com

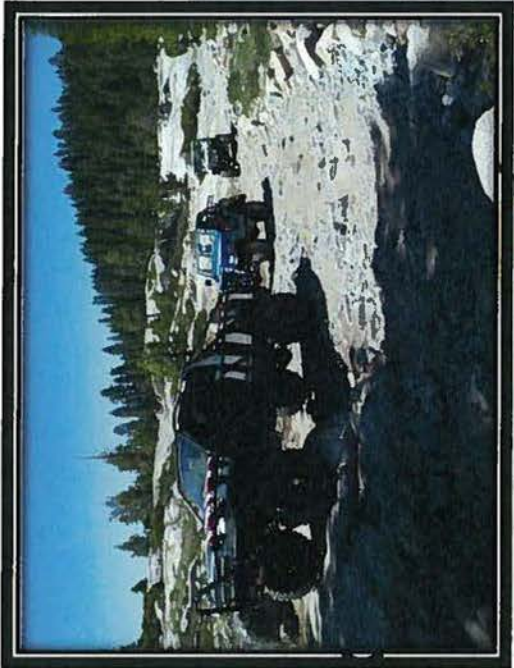


Rome Valley Vineyards
 A Da-Vine
 and Magical Place
 5869 Traverse Creek Road
 Garden Valley, CA 95633
 Telephone: 530-295-9260
 Fax: 530-344-0900
 info@romevalley.com
 www.romevalley.com



Rubicon Safaris Adventure Trips



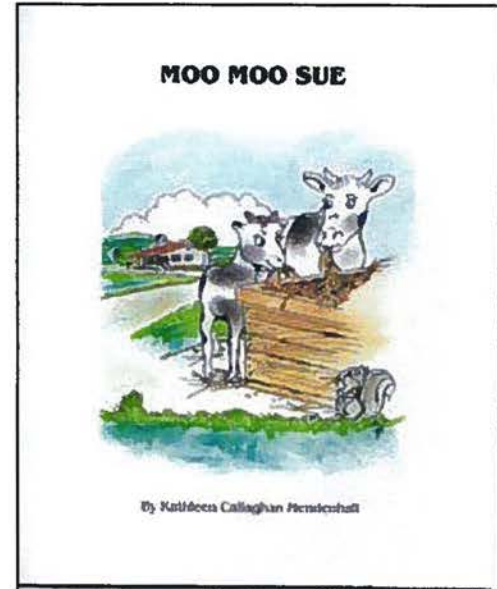
13-0876 C 26 of 32



Wine and Dine Gold Country

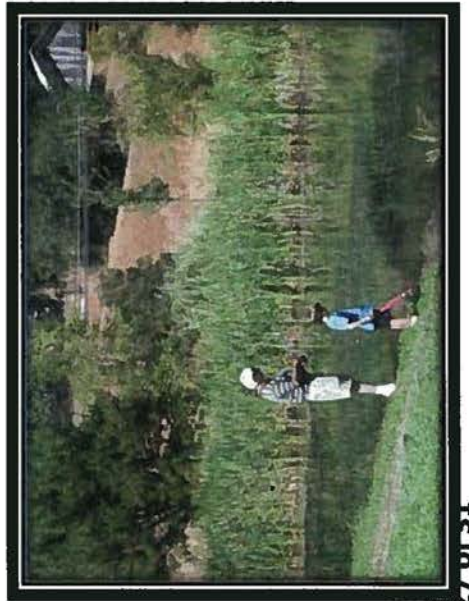
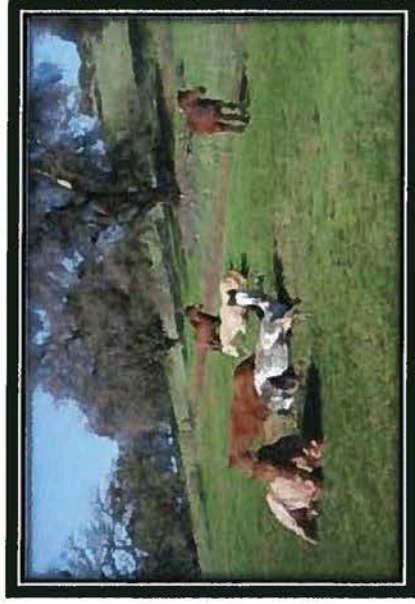
Wine and Dine Gold Country is your one-stop guide to the wineries, restaurants, places to stay, events, shopping, and activities in the historic California Gold Country of El Dorado County. All the information you need to plan a day trip or a whole vacation is right here at your fingertips.

If you are tired of looking at website after website and reading reviews written by unqualified people who always seem to be in a bad mood, you are in the right place! You are not alone if you have spent a lot of time doing searches for places to eat, stay, or just have some fun and come away confused and frustrated.

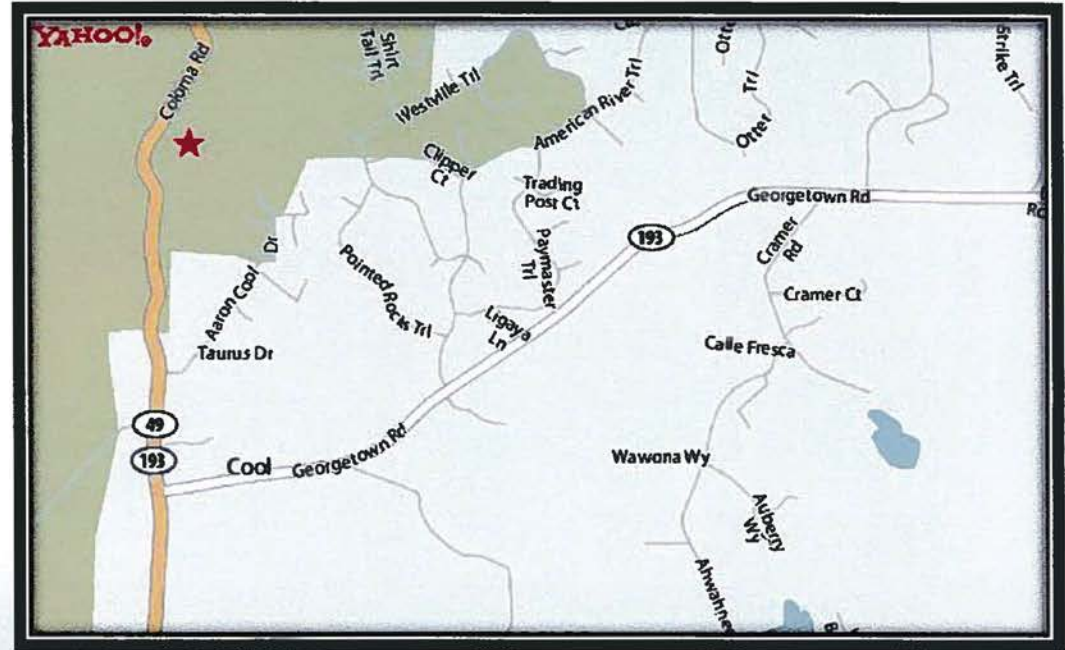


13-0876 C 27 of 32

**HISTORIC
PENOBSCOT RANCH
COOL, CALIFORNIA**

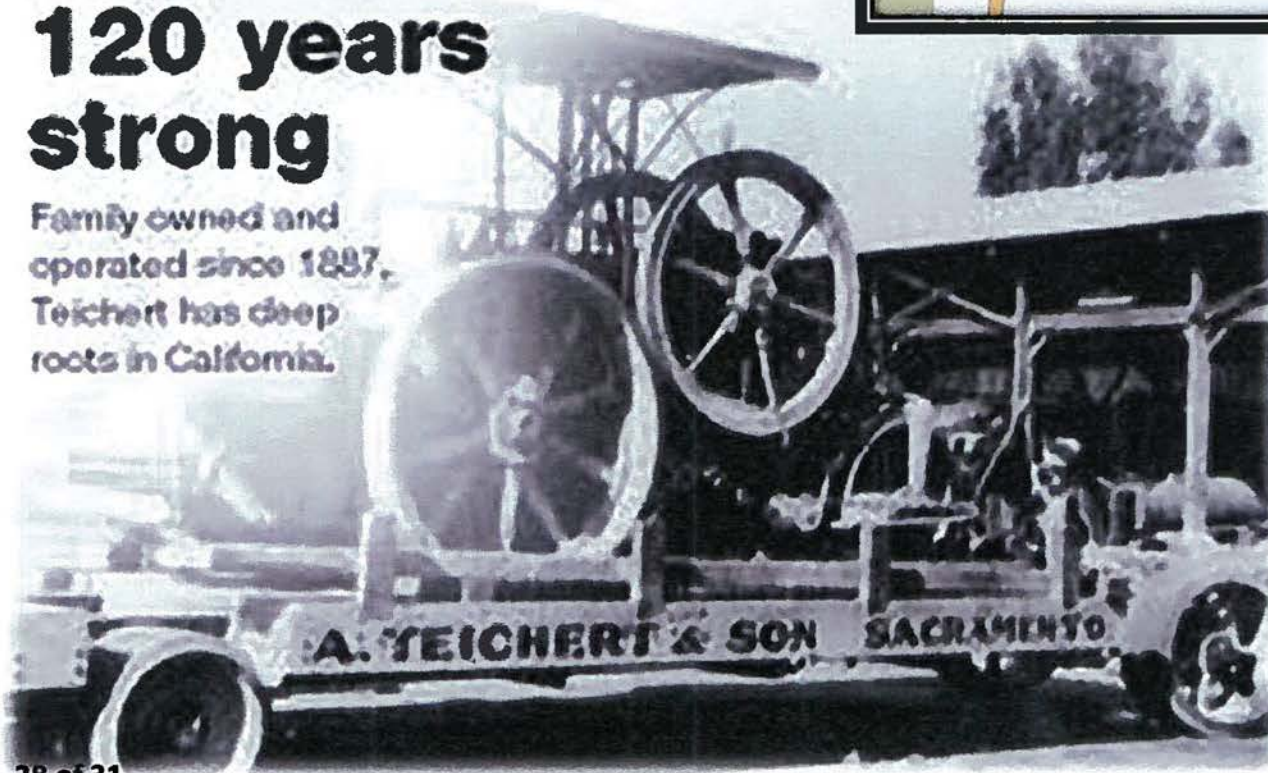


270151



More than 120 years strong

Family owned and
operated since 1887,
Teichert has deep
roots in California.



13-0876 C 29 of 32



Paula Siberg
Precision Instruments

Renzoni Family Farm
Chef Val's Kitchen
13-0876 C-33-182



89 Georgetown Divide R.C.D.
 2 El Dorado County RCD

EL DORADO and GEORGETOWN DIVIDE
 RESOURCE CONSERVATION DISTRICT
 EL DORADO COUNTY, CALIFORNIA

APRIL 1982
 0 5 10 MILES
 SCALE 1:500,000

Source:
 Base map prepared by SCS, WYSC Coris Unit from 1:125,000 General Highway map.
 U.S. DEPARTMENT OF AGRICULTURE SOIL CONSERVATION SERVICE (SOS) SCS PORTLAND, OR 97201

MT-OL-24200

CEDAC Business Showcase

Created and produced by

Roberta Long, CEDAC

Michael Ranalli, CEDAC

Ken Calhoun, Past President, Divide Chamber of Commerce

July 30, 2013