



**County Health
Rankings & Roadmaps**
A Healthier Nation, County by County

HOW HEALTHY IS EL DORADO COUNTY?

2013 COUNTY HEALTH RANKINGS

Alicia Paris-Pombo, MSc, MD

Public Health Officer El Dorado County

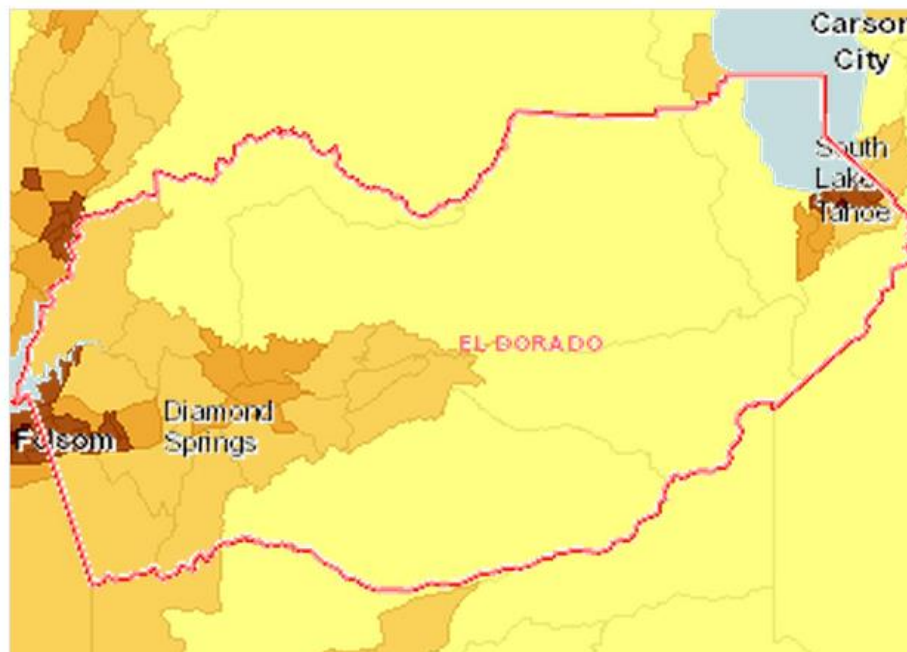




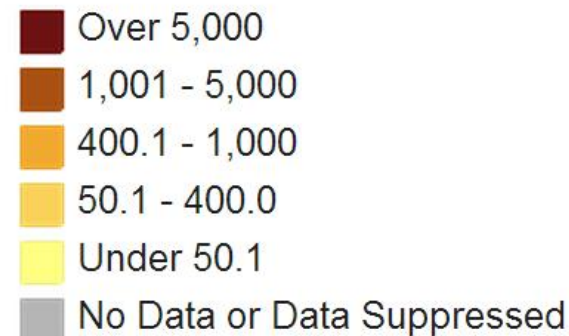
POPULATION EL DORADO COUNTY

Report Area	Total Population	Total Land Area (Square Miles)	Population Density (Per Square Mile)
El Dorado County, California	179,878	1,707.46	105.35
California	36,969,200	155,738.02	237.38
United States	310,346,360	3,530,997.60	87.89

Data Source: [U.S. Census Bureau, 2007-2011 American Community Survey 5-Year Estimates](#). Source geography: Tract.



Population, Density (Persons per Sq Mile) by Tract, 2007-11





WHY COUNTY HEALTH RANKINGS?

- ▶ Where we live matters to our health
- ▶ The *Rankings* helps counties see where they are doing well and where they are not, so they can make changes to improve health.
- ▶ Health is everyone's business



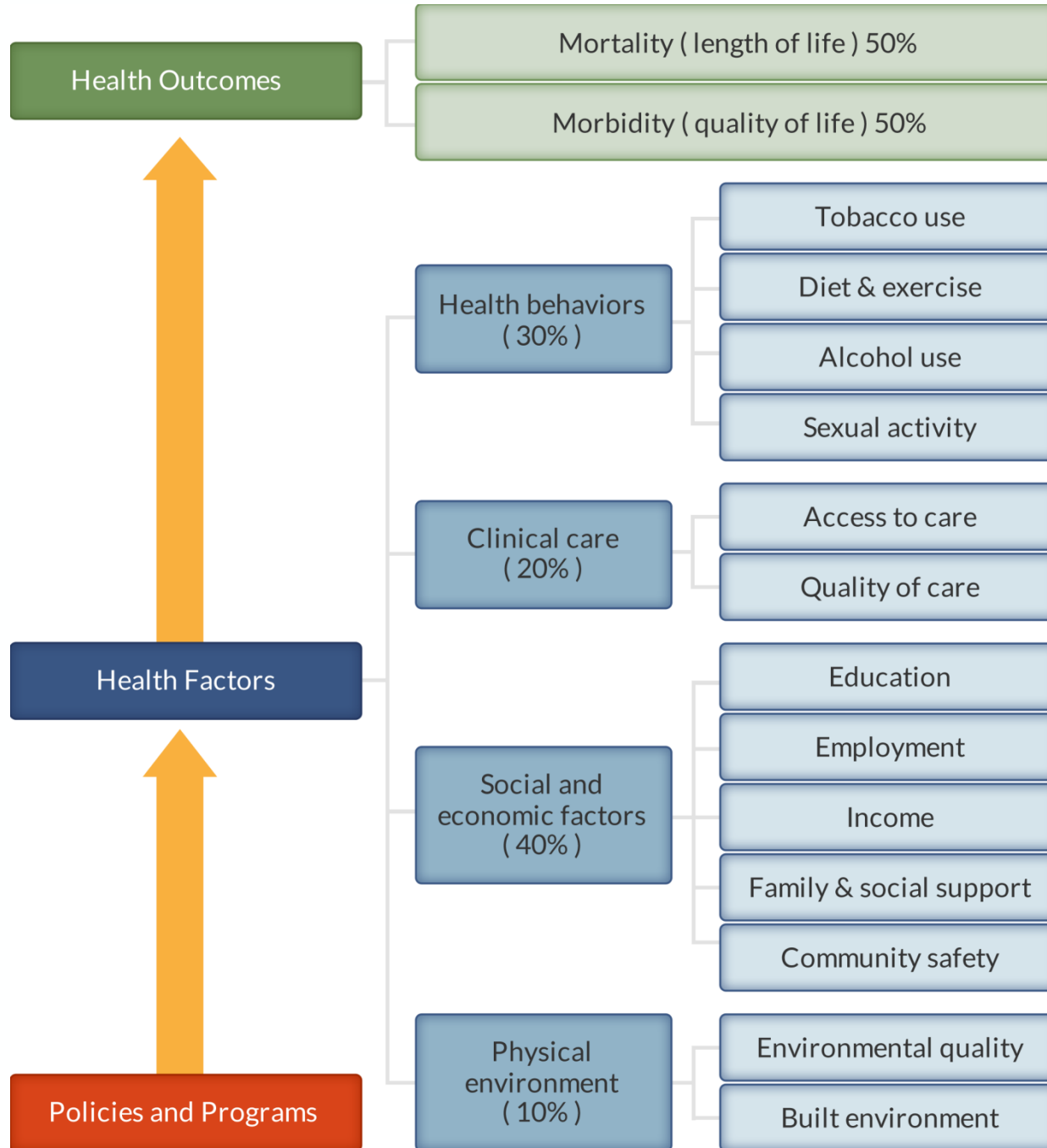
HOW HEALTHY IS EL DORADO COUNTY?

- ▶ El Dorado County health ranks 6th among 57 counties in California
- ▶ Our rank is great! The overall health outcomes 6th and socioeconomic factors 4th are very good. Does it reflect all our communities?
- ▶ Among the Health factors, it is in the physical environment that El Dorado county ranks the lowest (rank 24th).



COUNTY HEALTH RANKINGS: BACKGROUND

- ▶ **What:** State-by-state rankings of the health of each county in the United States
- ▶ **Who:** The Robert Wood Johnson Foundation (RWJF) and the University of Wisconsin Population Health Institute (UWPHI)
- ▶ **When:** Annually – 2012 Data Released April 3
- ▶ **Where:** www.countyhealthrankings.org





PHYSICAL ENVIRONMENT

EL DORADO RANKS 24TH

	El Dorado	California	National Benchmark
<u>Daily fine particulate matter</u>	11.8	11.7	8.8
<u>Drinking water safety</u>	0%	2%	0%
<u>Access to recreational facilities</u>	10	9	16
<u>Limited access to healthy foods**</u>	5%	3%	1%
<u>Fast food restaurants</u>	40%	48%	27%



SOCIOECONOMIC EL DORADO RANKS 4TH

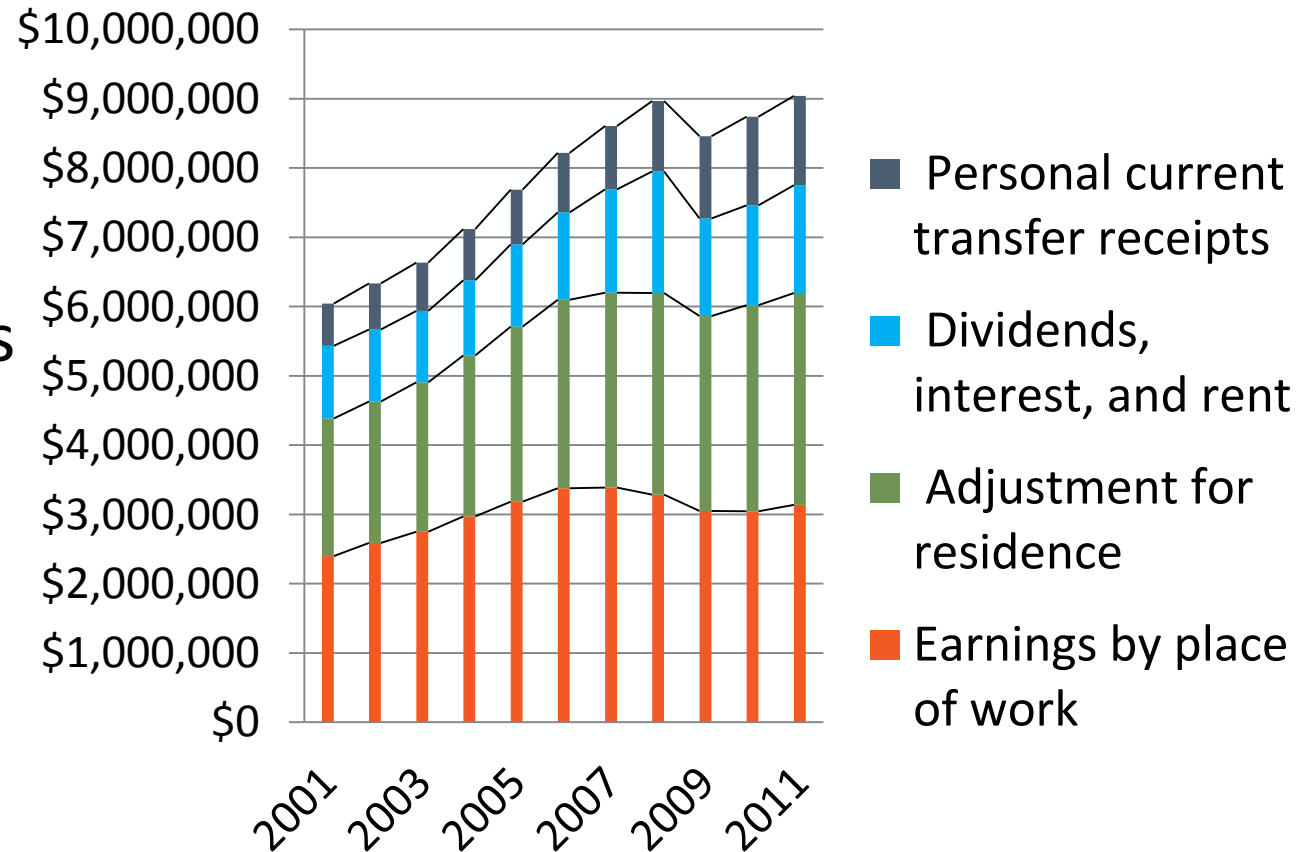
	El Dorado	California	National Benchmark
<u>High school graduation**</u>	92%	76%	Missing
<u>Some college</u>	67%	60%	70%
<u>Unemployment</u>	11.8%	11.7%	5.0%
<u>Children in poverty</u>	13%	23%	14%
<u>Inadequate social support</u>	15%	25%	14%
<u>Children in single-parent households</u>	23%	31%	20%
<u>Violent crime rate</u>	272	472	66



SOCIOECONOMIC – HOW IS EL DORADO DOING?

- ▶ El Dorado County Board of Supervisors Strategic Direction Fiscal Year 2010/2011 Over Arching Goals includes Encourage Economic Development
- ▶ 40% of tomorrow's health

DERIVATION OF PERSONAL INCOME EL DORADO COUNTY 2001 - 2011

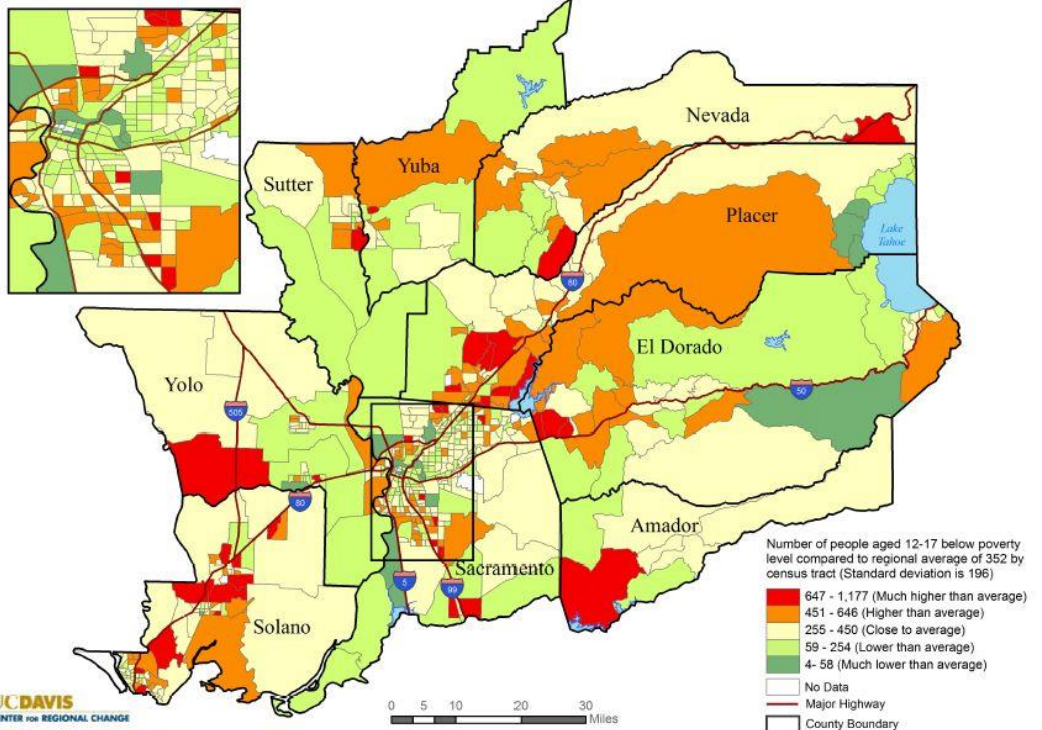




SOCIOECONOMIC FACTORS

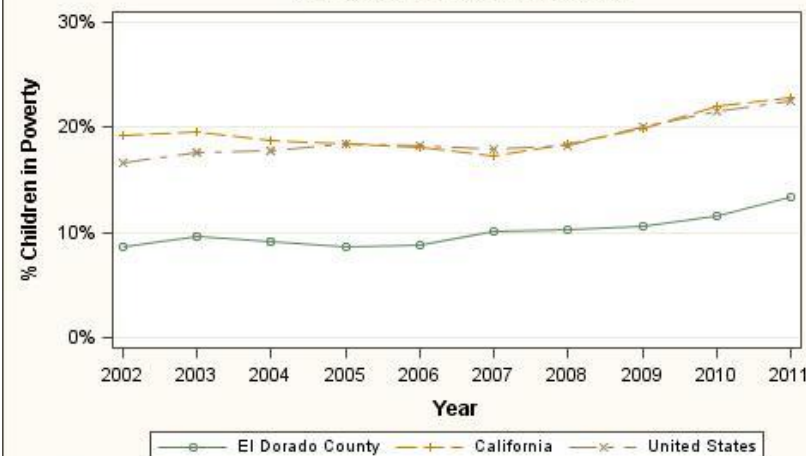
CHILDREN IN POVERTY

Total Population Aged 12-17 below Federal Poverty Level
Sacramento Region, 2000



- ▶ El Dorado County 13%
- ▶ California 23%
- ▶ National Benchmark 14%

Children in Poverty in El Dorado County, CA
County, State and National Trends



Note: Prior to 2005, children in poverty was based on the Current Population Survey; beginning in 2005, it was based on the American Community Survey.

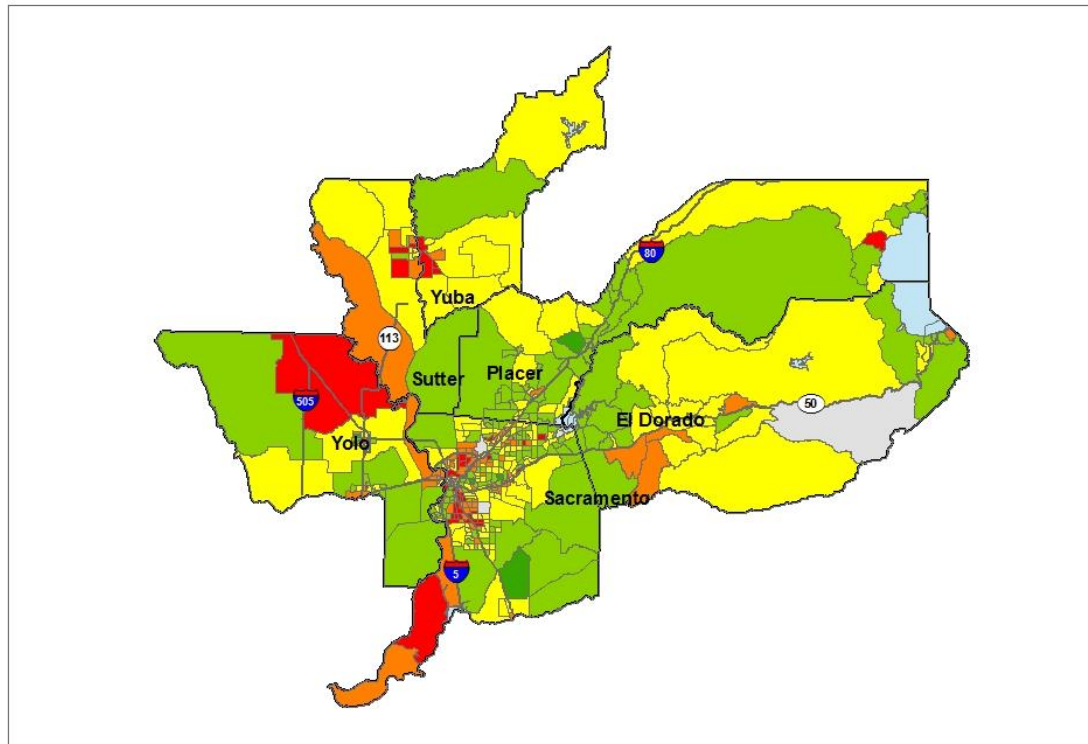


SOCIOECONOMIC FACTORS

UNEMPLOYMENT

Unemployment Rate

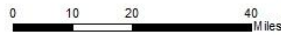
Source: ACS 2005-09



Unemployment rate
Average tract = 9%

- 0% - 2% (much lower than average)
- 2% - 7% (lower than average)
- 7% - 11% (close to average)
- 11% - 15% (higher than average)
- 15% - 23% (much higher than average)

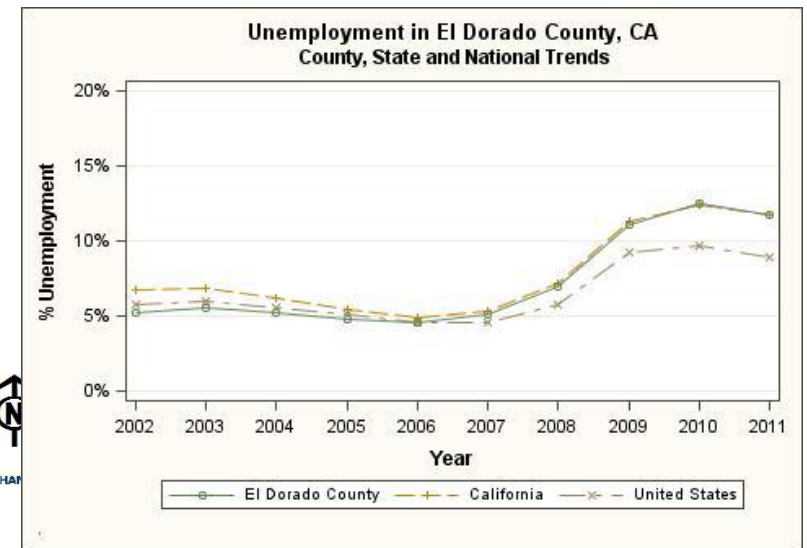
The tract categories are based on a standard score, called z-score, which is used to compare each census tract to the overall SACOG region. It is derived by subtracting the mean for all tracts in the region from the individual tract raw score and dividing the difference by standard deviation across all census tracts. A tract is defined as "much lower than average" if a z-score is below -1.5, "lower than average" as between -1.5 and -0.5, "close to average" as between -0.5 to 0.5, "higher than average" as between 0.5 and 1.5, and "much higher than average" as above 1.5. Due to distribution of each dataset, not all the categories are present in a map.



Map created Sept 2011 by Blotta Javher TTH

UC DAVIS
CENTER FOR REGIONAL CHANGE

- ▶ El Dorado County 11.8%
- ▶ California 11.7%
- ▶ National Benchmark 5%





CLINICAL CARE

EL DORADO RANKS 6TH

	El Dorado	California	National Benchmark
<u>Uninsured</u>	14%	21%	11%
<u>Primary care physicians**</u>	1,342:1	1,341:1	1,067:1
<u>Dentists**</u>	1,462:1	1,417:1	1,516:1
<u>Preventable hospital stays</u>	40	52	47
<u>Diabetic screening</u>	85%	81%	90%
<u>Mammography screening</u>	71%	62%	73%



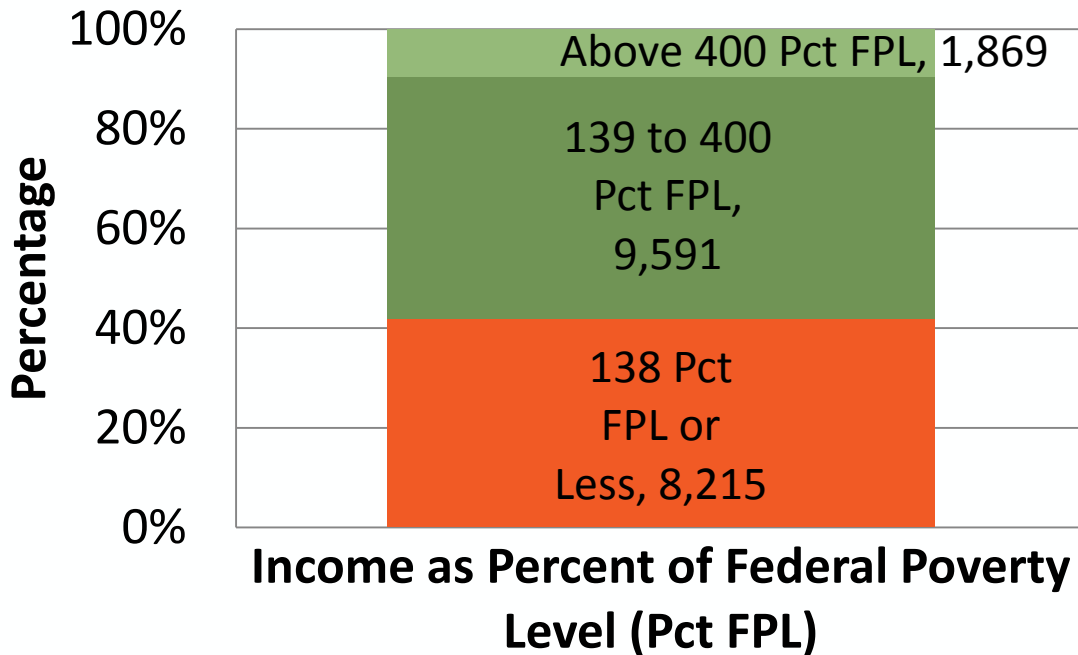
<http://assessment.communitycommons.org/CHNA/Report.aspx?page=4&id=504>

<http://www.enrollamerica.org/maps>

<http://www.oshpd.ca.gov/HWDD/SiteMap.html>

CLINICAL CARE AFFORDABLE CARE ACT IS COMING

Number and Percentage of Eligible Uninsured in El Dorado County by Income, 2013



Percent Adults Without Any Regular Doctor



- El Dorado County (24.40%)
- California (27.32%)
- United States (19.34%)

A large proportion of El Dorado County is designated by the Health Resources and Services Administration (HRSA) as a health professional shortage area and/or a medically underserved area



BEHAVIORAL HEALTH

EL DORADO RANKS 10TH

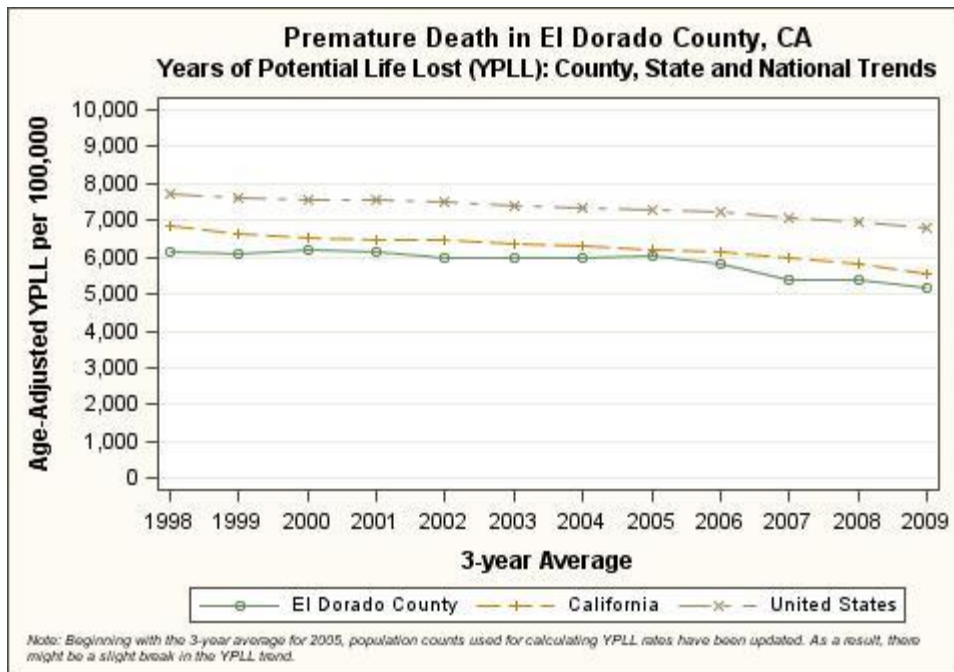
	El Dorado	California	National Benchmark
<u>Adult smoking</u>	13%	14%	13%
<u>Adult obesity</u>	21%	24%	25%
<u>Physical inactivity</u>	15%	18%	21%
<u>Excessive drinking</u>	19%	17%	7%
<u>Motor vehicle crash death rate</u>	12	10	10
<u>Sexually transmitted infections</u>	134	404	92
<u>Teen birth rate</u>	19	37	21



HEALTH OUTCOMES EL DORADO RANKS 6TH

MORTALITY 13TH

	El Dorado	California	National Benchmark
Premature Death	5,170	5,570	5,317



Age-Adjusted Death Rate, Accident Mortality (Per 100,000 Pop.)



- El Dorado County, California (45.55)
- HP 2020 Target (36)
- United States (39.07)



HEALTH OUTCOMES EL DORADO RANKS 6TH

MORBIDITY 4TH

	El Dorado	California	National Benchmark
<u>Poor or fair health</u>	10%	19%	10%
<u>Poor physical health days</u>	2.5	3.7	2.6
<u>Poor mental health days</u>	2.9	3.6	2.3
<u>Low birthweight</u>	6.3%	6.8%	6.0%

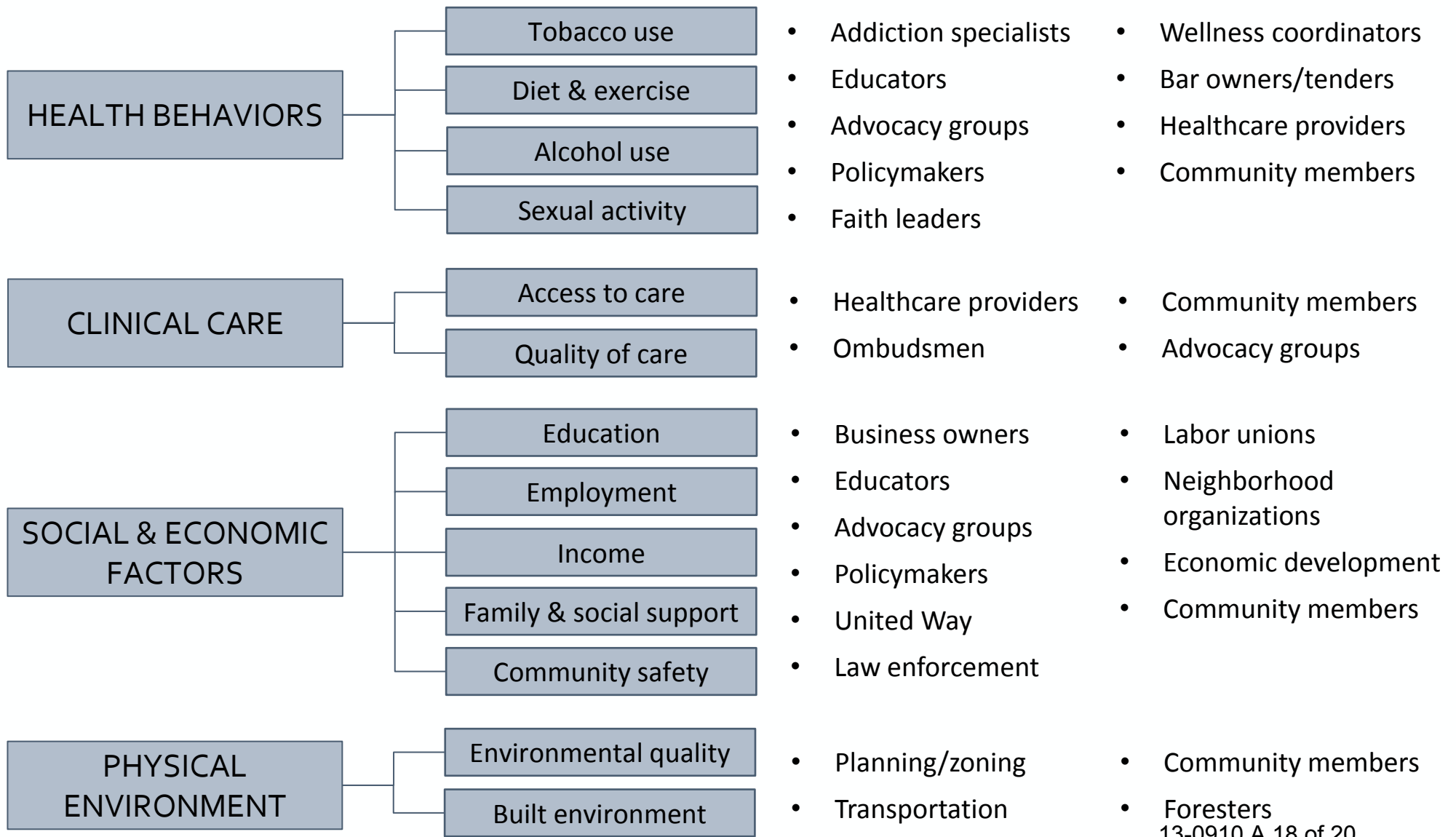


A CLOSER VIEW AND COLLABORATIVE APPROACH WITHIN THE HEALTH AND HUMAN SERVICES AGENCY

- ▶ Despite an overall great health ranking, specific health factors are below California's average: limited access to healthy food, high unemployment, excessive drinking and motor-vehicle crash death rate, shortage of health care providers
- ▶ Underneath the overall great county ranking are also vulnerable populations served by different sections of the Health and Human Services Agency and partners

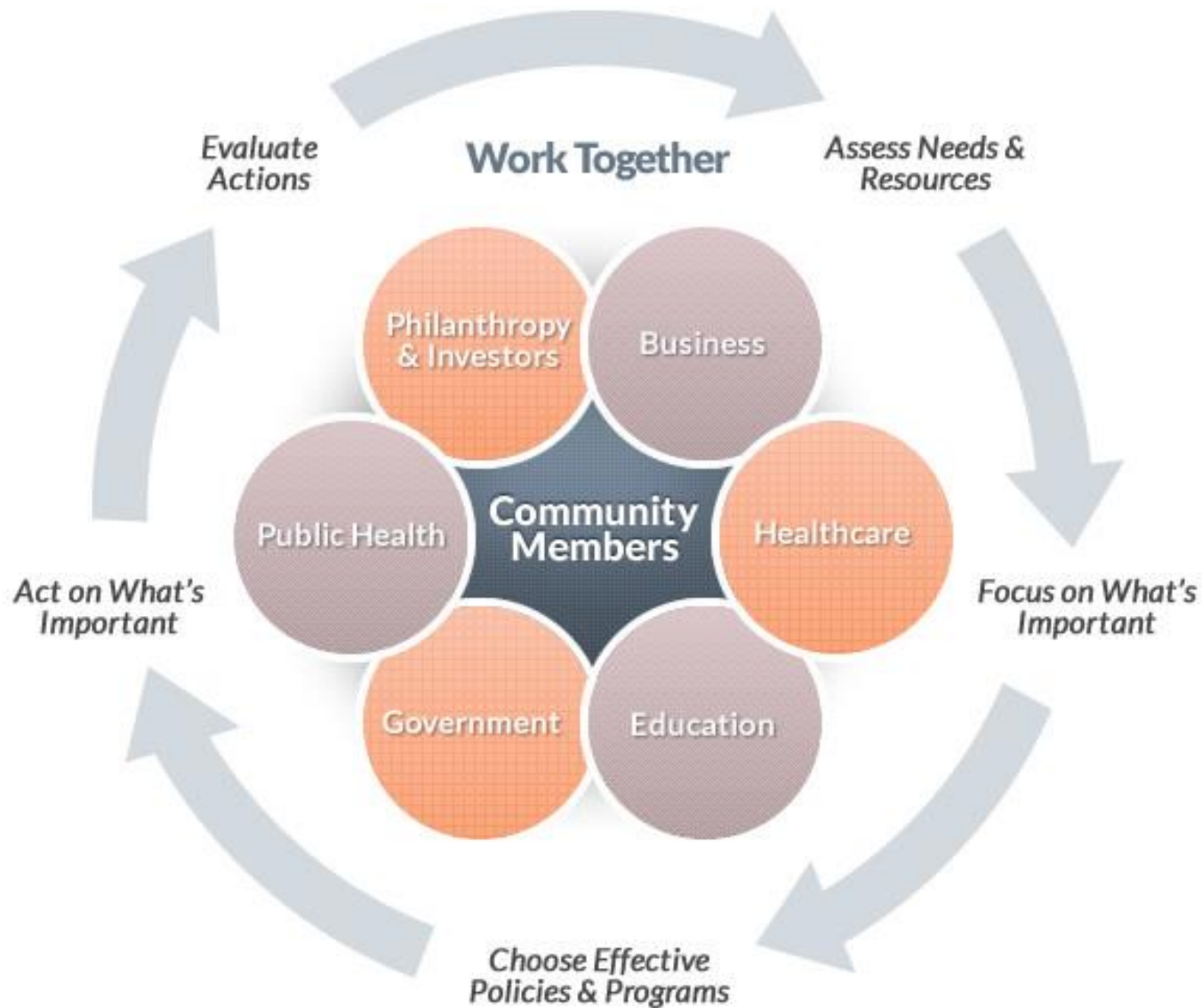


HEALTH FACTORS & POTENTIAL PARTNERS





TAKE ACTION





FOR MORE INFORMATION:

<http://www.edcgov.us/publichealth/>

For more community assessment needs

Olivia Byron-Cooper, MPH olivia.byron-cooper@edcgov.us

www.countyhealthrankings.org

