

Illustrative 2 - Not a viable alternative

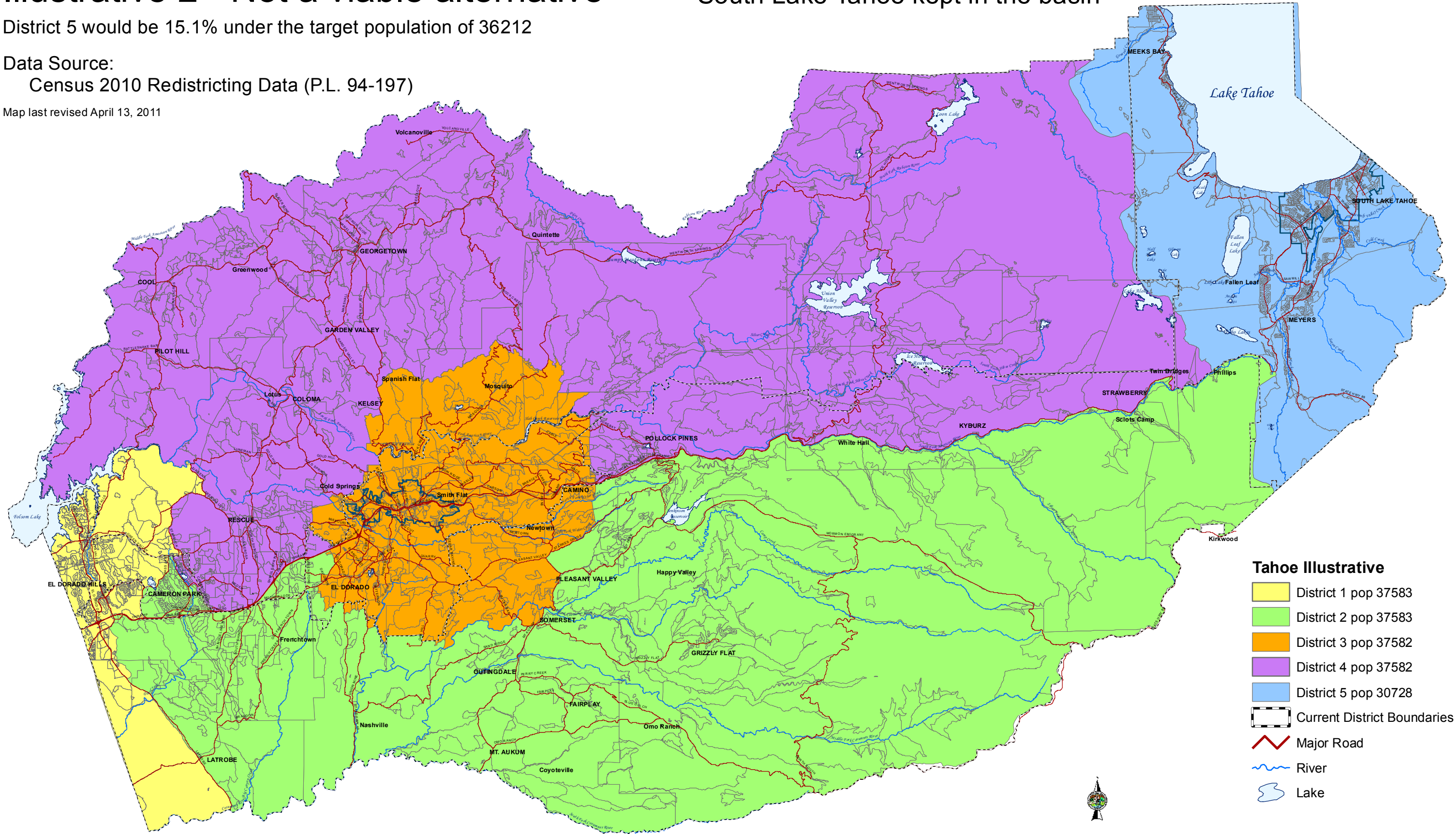
South Lake Tahoe kept in the basin

District 5 would be 15.1% under the target population of 36212

Data Source:

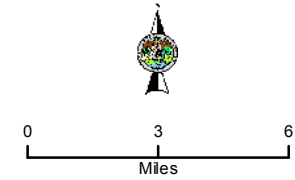
Census 2010 Redistricting Data (P.L. 94-197)

Map last revised April 13, 2011



Tahoe Illustrative

- District 1 pop 37583
- District 2 pop 37583
- District 3 pop 37582
- District 4 pop 37582
- District 5 pop 30728
- Current District Boundaries
- Major Road
- River
- Lake



Map displayed in State Plane Coordinate System (NAD 1983 California Zone 2, feet)

County of El Dorado
State of California