



El Dorado County Fire Safe Council

# **Funding and Activity Report**

**to the**

# **El Dorado County Board of Supervisors**

# **October 8<sup>th</sup> 2013**



## **Mission Statement**

**“Protect the people of El Dorado County and their property, from the effects of catastrophic wildfire through education, cooperation, innovation, and action.”**

# Evolution of Agencies





# El Dorado County Fire History

**Fire History Map**

A legend for the Fire History Map. It consists of a vertical list of colored squares, each corresponding to a different fire event. The colors include various shades of green, yellow, orange, red, and brown. Some squares have patterns like checkered or solid colors. To the left of the legend, there are two small icons: a fire hydrant and a fire truck.

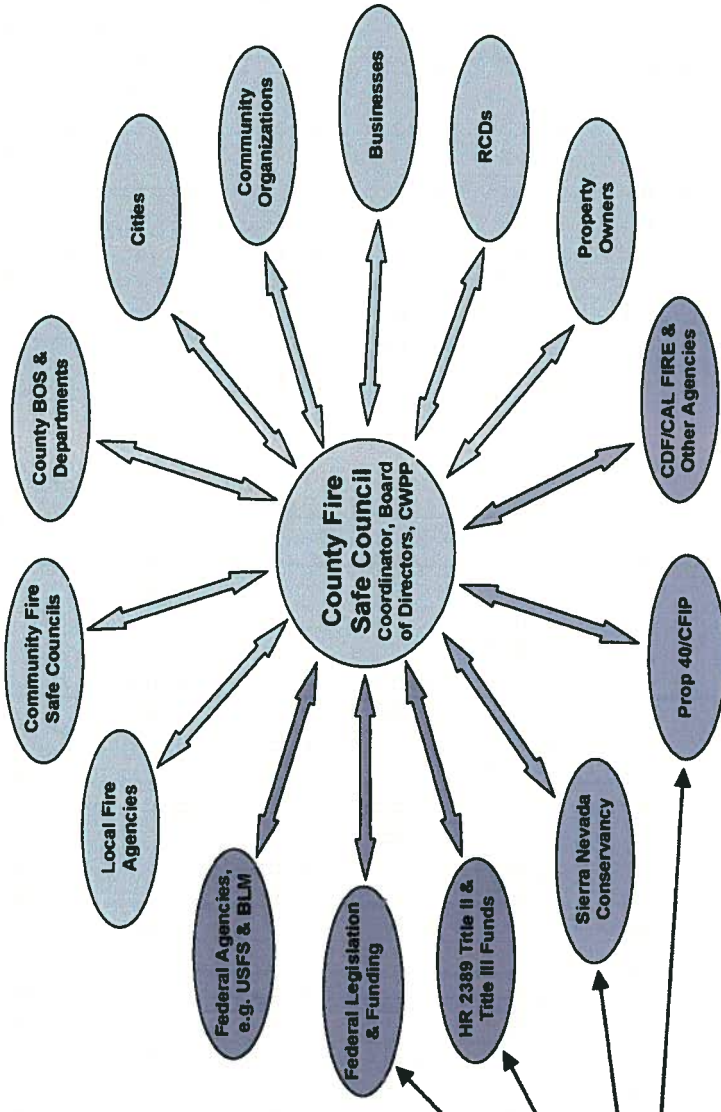


# County Fire Safe Council Concept



## An Idealized County-Wide Local Fire Safe Council

Legend: Local/County Resources    State Resources    Federal Resources

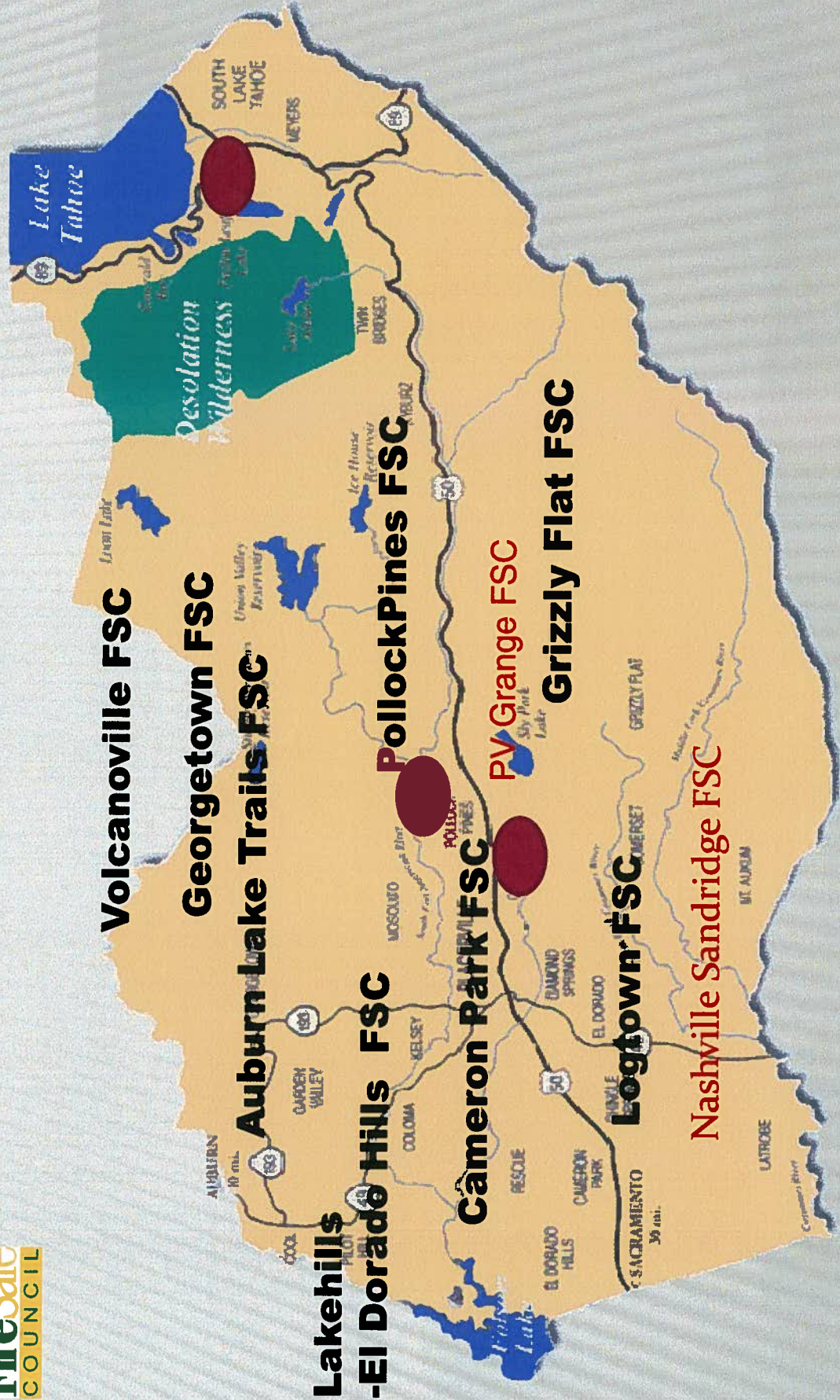


Acronyms  
 CWPP Community Wildfire Protection Plan  
 USFS US Forest Service  
 FEMA Federal Emergency Management Agency  
 BLM Bureau of Land Management  
 BOS (County) Board of Supervisors  
 RCDDs Resource Conservation Districts  
 CDF California Department of Forestry & Fire Protection

Primary Funding sources for local Fire Safe Councils



# Fire Safe Councils



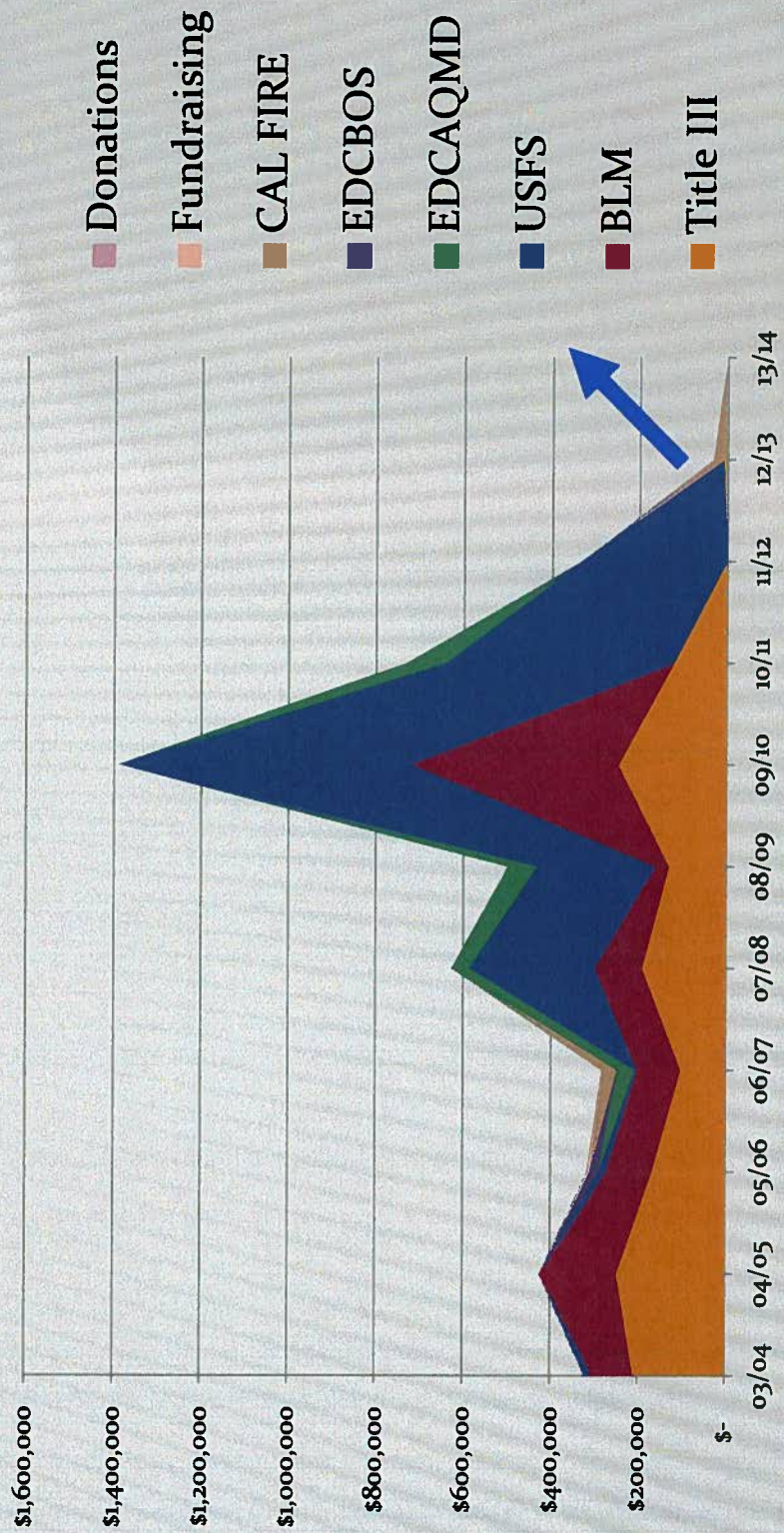


## Benefits of Association

- ❑ Experience
- ❑ Relationships & Single Point of Contact
- ❑ Fiscal Track Record & Fiscal Sponsorship
- ❑ Policy Umbrella to meet Federal Requirements
- ❑ Non Profit 501(c)(3) Status
- ❑ Economy of Scale – Contracts
- ❑ Insurance
- ❑ Web Site



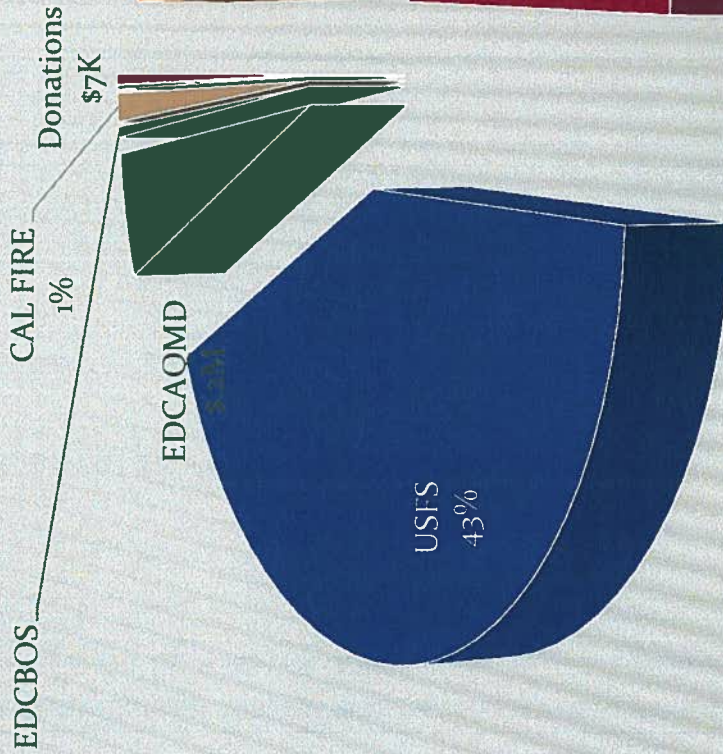
# Funding History







# Funding Sources

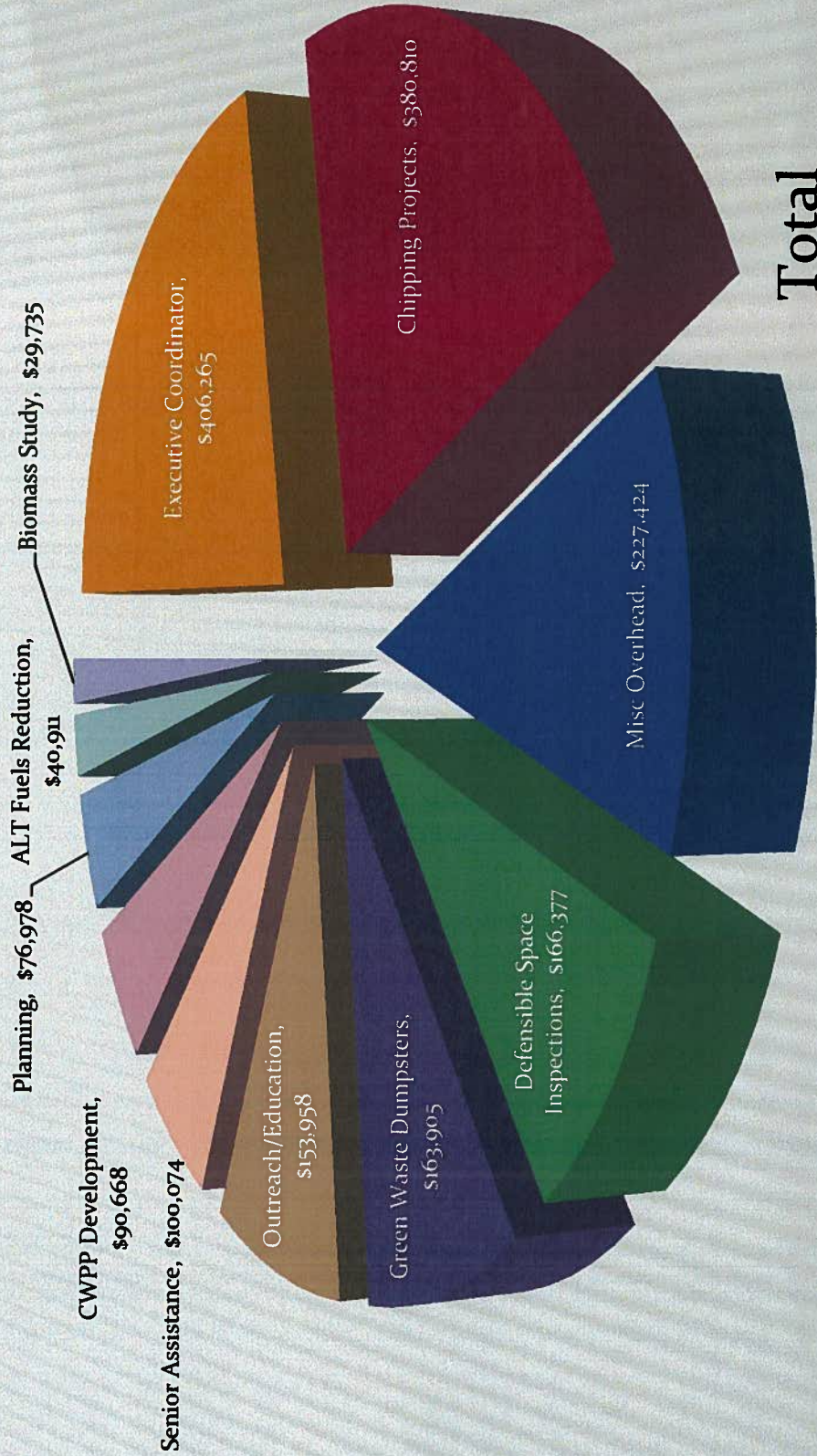


**2003-2013**  
**\$4.960M**

- Title III
- BLM
- USFS
- EDCAQMD
- EDCBOS
- CAL FIRE
- Fundraising
- Donations



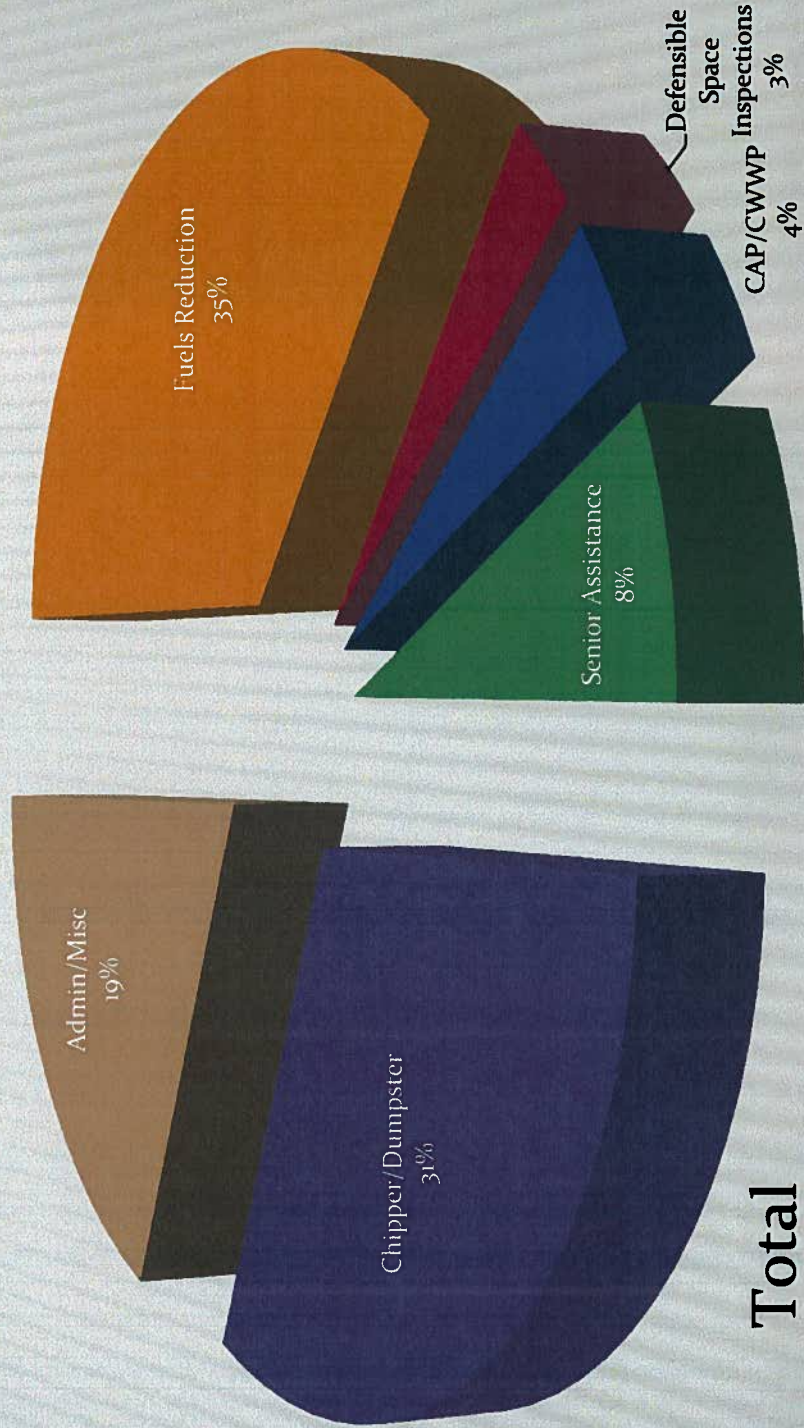
# Expenditure of El Dorado County Funds



**Total**  
**\$1,837,104**



# Uses of Funds



**Total**  
**\$ 5,082,709**



## Focus Areas

- ❑ Community Wildfire Protection Plans
- ❑ Chipping & Dumpster Program
- ❑ Fuel Reduction Projects
- ❑ Education & Outreach



## Community Wildfire Protection Plan

- ❑ Detailed Planning Document
- ❑ Collaboration of Agencies and Community
- ❑ Requires Expert Consultants
- ❑ Risk Assessment
- ❑ Community Priorities & Recommendations
- ❑ Action Plan
- ❑ Execution



# Community Wildfire Protection Plans (CWPP)

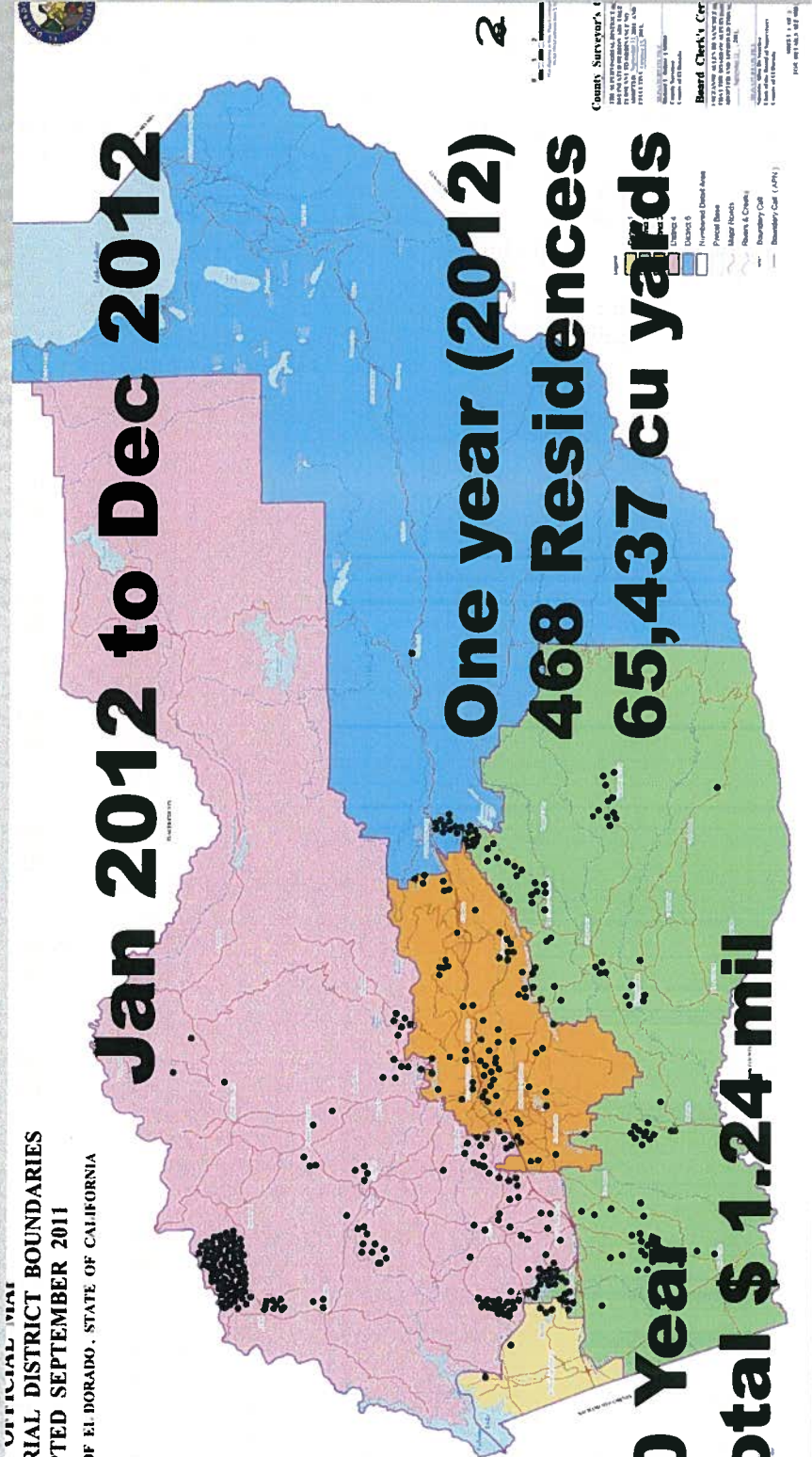
	Approval Year	Year Revised	Battalion
Auburn Lake Trails	2005	in process	2
Gold Bug Park	2005	no	1
Cameron Park	2008	in process	5
Volcanoville	2002	2013	2
Grizzly Flat(s)	2006	2012	3
El Dorado County Wide	2004	no	1,2 & 5
Hwy 50 Corridor	2010	no	1
Hwy 49 Corridor	2013	no	1
Logtown	2007	In process	1
South Lake Tahoe	2004	in process	1
<b>Future CWPP's</b>			
Lake Hills Estates	in process		1
Georgetown	in process		2
<b>Fire Safe Plans</b>			
Gold Hill	2009		
Royal Equestrian Estates	2008		
Nashville/Sand Ridge	2008		

**Total \$201K**



Chipping Locations Served

OFFICIAL MAP  
 SUPERVISORIAL DISTRICT BOUNDARIES  
 ADOPTED SEPTEMBER 2011  
 COUNTY OF EL DORADO, STATE OF CALIFORNIA



**Jan 2012 to Dec 2012**

**One year (2012)  
 468 Residences  
 65,437 cu yards**

**10 Year  
 Total \$ 1.24 mil**

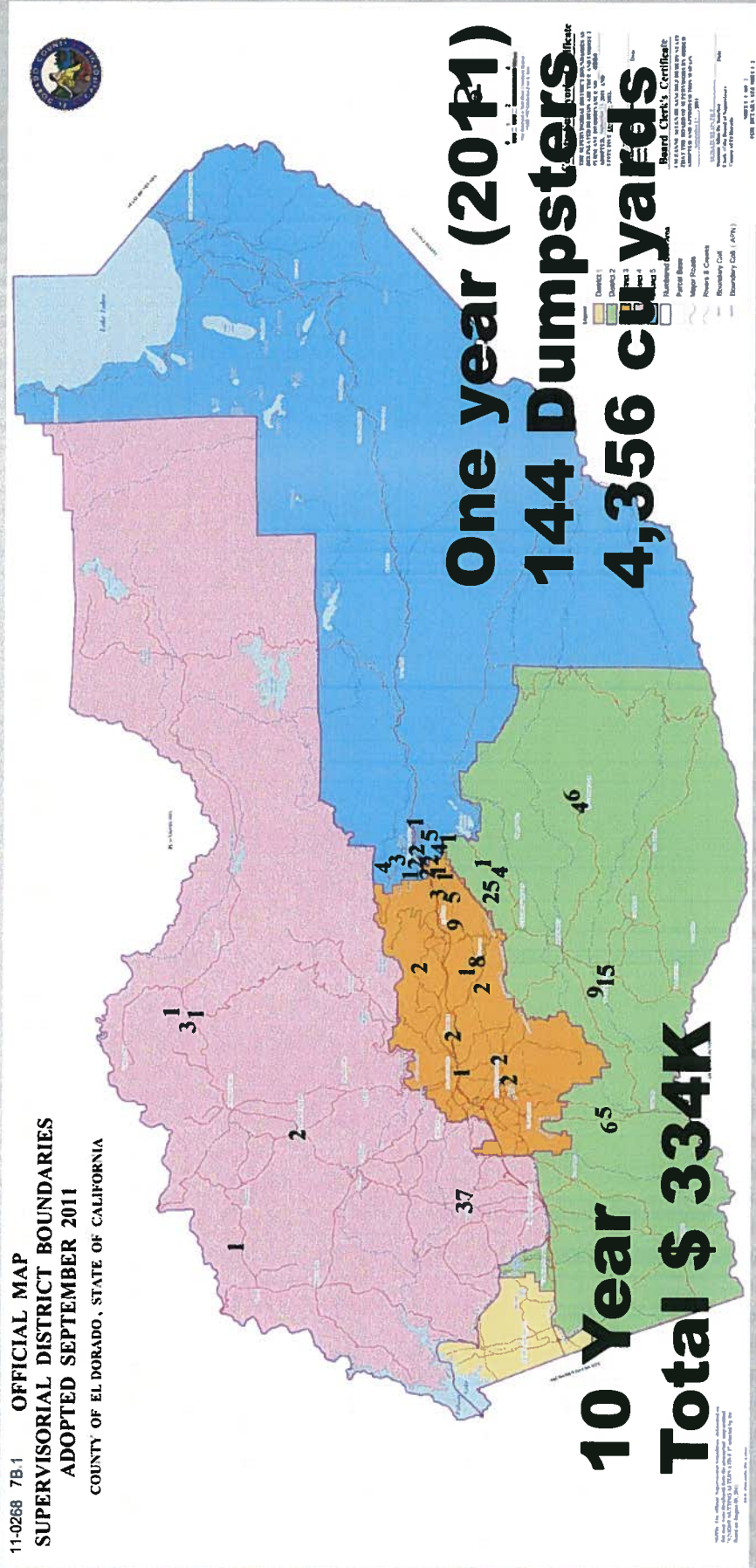
County Surveyor's Office  
 Board Clerk's Office  
 Date: 09/28/11

100% Fire Safe  
 The Fire Safe Council is a 501(c)(3) non-profit organization.  
 Board of Directors: 2011-2012



# Dumpster Locations 2011

11-0268 7B-1 OFFICIAL MAP  
 SUPERVISORIAL DISTRICT BOUNDARIES  
 ADOPTED SEPTEMBER 2011  
 COUNTY OF EL DORADO, STATE OF CALIFORNIA



**One year (2011)**  
**144 Dumpsters**  
**4,356 curyards**

**10 Year**  
**Total \$ 334K**

**Beard Clark's Certificate**  
 I, BEARD CLARK, County Clerk of El Dorado County, California, do hereby certify that the above is a true and correct copy of the original as the same appears on file in my office.  
 BEARD CLARK, County Clerk  
 11000 El Dorado Blvd., Suite 200  
 El Dorado, CA 95623  
 Phone: (916) 424-1100  
 Fax: (916) 424-1101  
 E-mail: beard@el-dorado.ca.gov

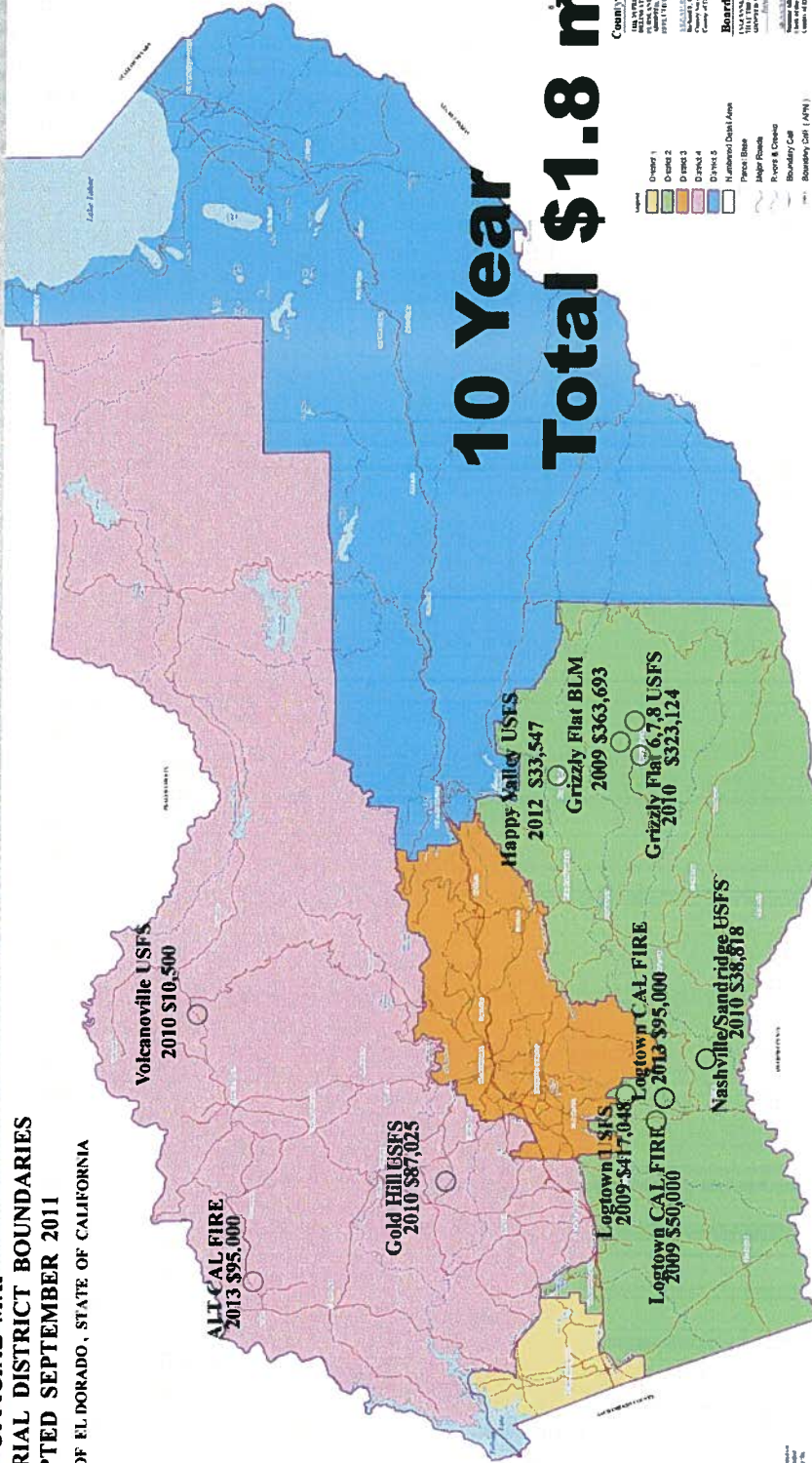
Maple Valley, California, is a registered trademark of the author. All other trademarks are the property of their respective owners. This map is for informational purposes only. It is not intended to be used for legal or other purposes. The County of El Dorado is not responsible for any errors or omissions in this map. © 2011 El Dorado County, California. All rights reserved.



# Fuels Reduction Projects



**PERVISORIAL DISTRICT BOUNDARIES**  
**ADOPTED SEPTEMBER 2011**  
 COUNTY OF EL DORADO, STATE OF CALIFORNIA



## 10 Year <sup>2</sup> Total \$1.8 mil

**County Surveyor's Certificate**  
 I, the undersigned, being duly qualified and sworn to, do hereby certify that the foregoing is a true and correct copy of the original as the same appears in my office.  
 COUNTY OF EL DORADO  
 COUNTY SURVEYOR  
 DATE: 11/15/11

**Board Clerk's Certificate**  
 I, the undersigned, being duly qualified and sworn to, do hereby certify that the foregoing is a true and correct copy of the original as the same appears in my office.  
 COUNTY OF EL DORADO  
 BOARD CLERK  
 DATE: 11/15/11

- District 1
- District 2
- District 3
- District 4
- District 5
- Unincorporated District Area
- Major Road
- Minor Road
- Power & Open
- Boundary Call
- Boundary Call (APN)

This map was prepared by the County Surveyor's Office and is subject to the provisions of the California Public Resources Code, Section 26100, and the California Public Resources Code, Section 26101. The County Surveyor's Office is not responsible for any errors or omissions in this map.



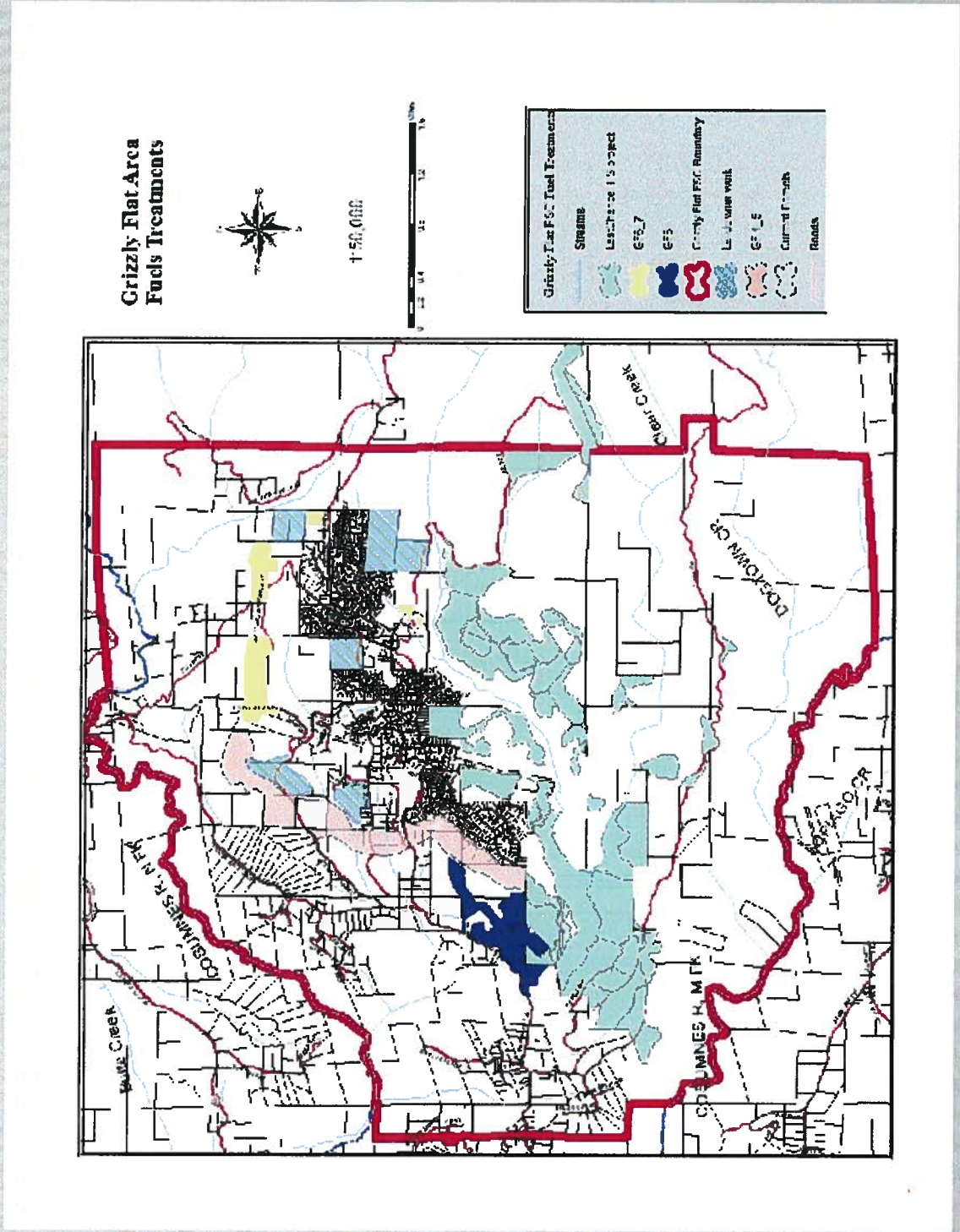
# Grizzly Flats Fuel Reduction

## Completed Grizzly Flats Fire Safe Council 'CWPP' Fuel Treatment Projects

Since 2006, the GFFSC has worked diligently and with focus to encircle the Grizzly Flats community with defensible space around its school and a continuous shaded fuel break along the communities evacuation route and around the community. The Council has been able to accomplish all of its 2006 CWPP fire prevention goals and is currently working on the goals identified in its 2012 CWPP Update. Completed CWPP Projects are listed below.

Project No.	Project Type	Grant Funding	Funding Match	Start Date	Completion Date	CWPP	Treatment Method	Treated Acres
CWPP	Create the GF CWPP	\$21,823.	n/a	3-2005	1-2006	n/a	n/a	n/a
GF-1	Primary Evacuation Route	\$234,731.	\$42,919.	8-2007	11-2008	Yes	Hand Treatment	128
GF-2	Fuels Treatment; around the elementary school	Project was done without grant funding. Project was done with community volunteer labor.			8-2006	Yes	Hand Treatment	1
GF-3	Secondary Roads Evacuation Route	Incl. in GF-1	Incl. in GF-1	8-2007	11-2008	Yes	Hand Treatment	Incl. in GF-1
GF-4	Fuels Treatment	\$211,341. (Incl'g. Prop. 40: \$80,000.)	\$18,000.	8-2007	6-2008	Yes	Mastication	100
GF-5	Fuels Treatment	\$363,693.	\$76,484.	10-2009	5-2010	Yes	Mastication	190
GF-6/7	Fuels Treatment	\$338,150.	\$56,000.	7-2011	12-2011	Yes	Mastication	160
GF-8								150
<b>Totals =</b>		<b>\$1,169,738.</b>	<b>\$193,403. (16.5%)</b>					<b>729</b>
<b>Grand Total =</b>		<b>\$1,363,141.</b>						

# Grizzly Flat Fuels Reduction





## Education & Public Awareness

- Schools
- Public Events
- Mailers
- Website
- Email and phone trees
- Social Media

**10 Year Total**  
**\$ 154K**



## Discretionary Budget

Budget Line Items	2013-14 Approved Admin Budget	2013-14 Budget With County Funding
Beginning Balance	\$ 36,094	\$ 17,276
County Funding	-	\$ 51,000
<b>Total Available</b>	<b>\$ 36,094</b>	<b>\$ 68,276</b>
Internet & Web	\$ 2,400	\$ 2,400
Insurance	\$ 3,720	\$ 4,087
Accounting Fees	\$ 1,920	\$ 1,950
Administrative	\$ 1,978	\$ 2,003
Projects & CWPP	\$ 5,800	\$ 9,000
Fundraising	\$ 3,000	\$ 3,000
Chipping & Seniors	\$ 0	\$ 22,000
<b>Total Expenses</b>	<b>\$ 18,818</b>	<b>\$ 44,440</b>
<b>Ending Balance</b>	<b>\$17,276</b>	<b>\$ 23,836</b>



# Current Grant Proposals

2014 Grant Applications	Grant	Match	Total
Chipping & Dumpster	\$ 200,000	\$ 224,809	\$ 424,809
Logtown FSC, LT-10	\$ 96,748	\$ 108,290	\$ 205,038
Grizzly Flats FSC, GF-12	\$ 99,680	\$ 144,570	\$ 244,250
<b>Sub Total</b>	<b>\$ 396,428</b>	<b>\$ 477,669</b>	<b>\$ 874,097</b>
Lakehills FSC, CWPP	\$ 32,754	\$ 36,510	\$ 69,264
<b>ALT VMP &amp; CAG</b>	<b>\$ 95,000</b>	<b>--</b>	<b>\$ 95,000</b>



# Partners

Business	Agency	Organizations
El Dorado Disposal	EDC Board of Supervisors	M.O.R.E
Mountain Enterprises	Cal-Fire	Friends of Seniors
U.S. Bank	El Dorado Fire Chiefs Association	El Dorado Community Foundation
Umpqua Bank	Cal Trans	Snowline Hospice
Wildland RX	EDSO (OES)	
Smith Maloney (CPA)	USFS	
Farmers Insurance	Air Quality Mgt District	
	Water Board	
	EID and PG&E	



## El Dorado County Fire Safe Council

### Challenges:

- ❑ Apathy
- ❑ Absentee Property Owners
- ❑ Volunteer “Burn Out”
- ❑ Fire “Fee”
- ❑ Nurturing Collaborators
- ❑ Building and Sustaining Support
- ❑ Consistent Financial Support





## The Vision (New Business Model)

- ❑ Volunteer Base
- ❑ Minimize Overhead
- ❑ Maximize Boots on the Ground
- ❑ Assist Community Satellite Councils
  - ❑ Develop & Implement Protection Plans
- ❑ Enhance Partnerships & Collaborations
- ❑ Pursue grants & funding to protect our Citizens, Communities & our County