

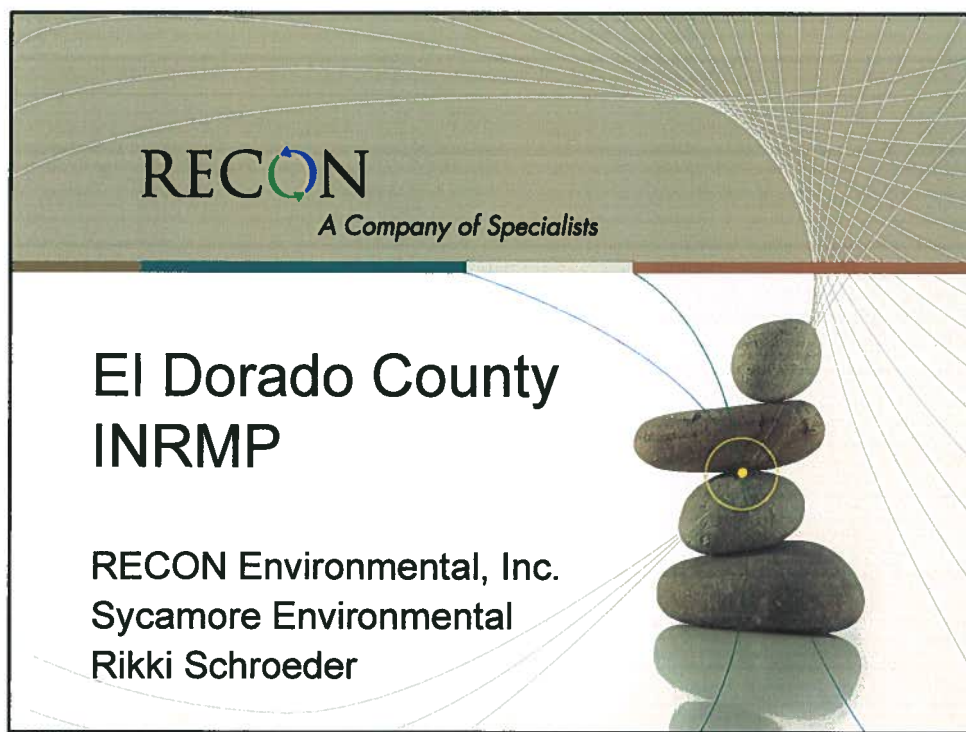
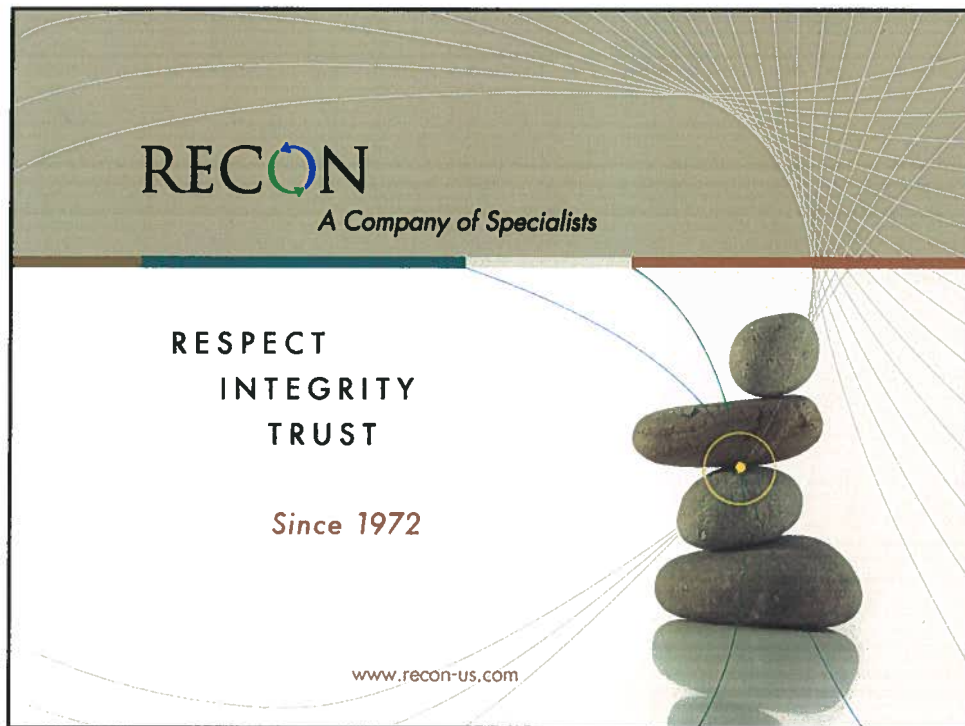
## Executive Summary

RECON Environmental, Inc. (RECON) has assembled a high quality and experienced consulting team to assist the County of El Dorado (County) in the development of an Integrated Natural Resources Management Plan (INRMP). The RECON team will work closely with the Board of Supervisors (Board), County Staff, and the Plant and Wildlife Technical Advisory Committee (PAWTAC) and INRMP Stakeholders Advisory Committee (ISAC), and other participants to explore and identify appropriate and feasible strategies for the development of the INRMP, in the context of the diverse interests involved in the process. RECON has unmatched experience in working with local and federal government agencies in the development and implementation of plans that address natural resource issues, including:

- INRMPs for U.S. Navy facilities in southern California;
- Resource Management Plans (RMPs) for the Bureau of Land Management (BLM);
- Habitat Conservation Plans (HCPs) for counties and other local government agencies in California, Texas, Nevada, Arizona, and Delaware; and
- Natural Communities Conservation Program (NCCP)/HCPs for local governments and agencies in California.

All of these programs have involved working closely with elected officials, staff, resource agencies, and the public. RECON's specific role has been to facilitate discussions among the participants to identify the key achievable goals and objectives for the public processes, to develop a strategy or alternatives to achieve these goals and objectives, and to then provide the analyses and documents that support the decisions necessary to achieve these goals and objectives. Mr. Paul Fromer, who has been the project manager for almost all of these projects, will manage the overall team effort for the County.

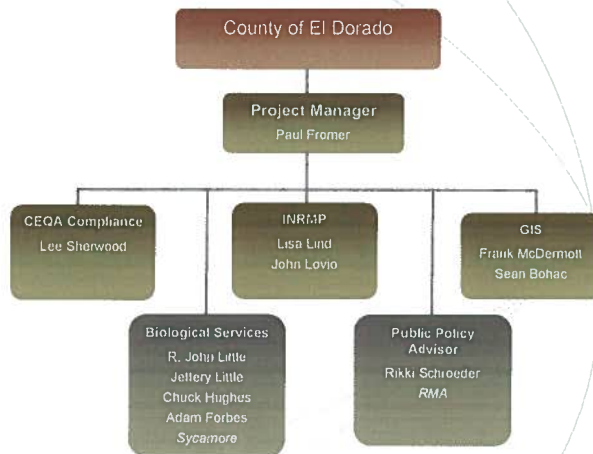
RECON is teaming with Sycamore Environmental Consultants, Inc., (Sycamore) who will provide local biological, wetland, and other environmental consulting experience to the team. Sycamore has a reputation among the public and private sectors for the high quality and integrity of the work that they perform. The firm has worked on numerous public and private projects in the County and the City of Placerville, including biological, wetland, and permitting support for bridge and highway projects, linear features projects such as transmission lines and pipelines, and general and specific plan projects for local and regional governments and private developers. They have many years of experience working with special-status species issues in western El Dorado County, including California red-legged frog and the Pine Hill Plants and are familiar with all of the relevant data sources. Their role will be to provide input into the initial discussions and consensus on the key definitions, updating the inventory of biological data, evaluation of the corridor and connectivity issues, and input into the development of alternative approaches. Sycamore is headed by Dr. John Little, who brings over 30 years of biological consulting in northern California, supported by his staff of biologists with years of local experience in El Dorado County. Dr. Little has managed and contributed the biological sections of many General Plan and Regional planning efforts such as the City



## Presentation Outline

- Team Experience
  - RECON Environmental
  - Sycamore Environmental Consultants
  - Rikki Schroeder
- Project Example
- El Dorado INRMP

## Team Experience



## RECON Highlights

- 37 years of service in California
- 10(a)/NCCP permit approvals
- Unmatched HCP/NCCP experience
- Conservation biology expertise
- Knowledge of local government
- Knowledge of resource agency regulations
- Award-winning HCPs/Habitat Restoration Plans

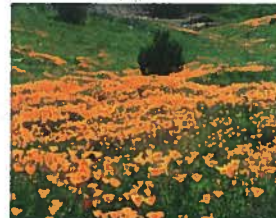
## Technical Capabilities

- HCP/NCCP and supporting CEQA and NEPA documentation
- Conservation biology
- Biological resources
- Habitat restoration
- Permitting
- Cultural resources
- Noise and air quality
- GIS mapping and analysis



## Related Experience

- Sonoran Desert Conservation Plan
- Clark County MSHCP
- BLM Yuma Field Office RMP/EIS
- Edwards Aquifer Recovery Implementation Program
- San Diego County Water Authority NCCP/HCP





## Paul Fromer Project Manager



- 29 years of experience
- Expert in the HCP/NCCP process
- Conservation biologist
- 20 HCPs
- Trained mediator
- Public facilitator

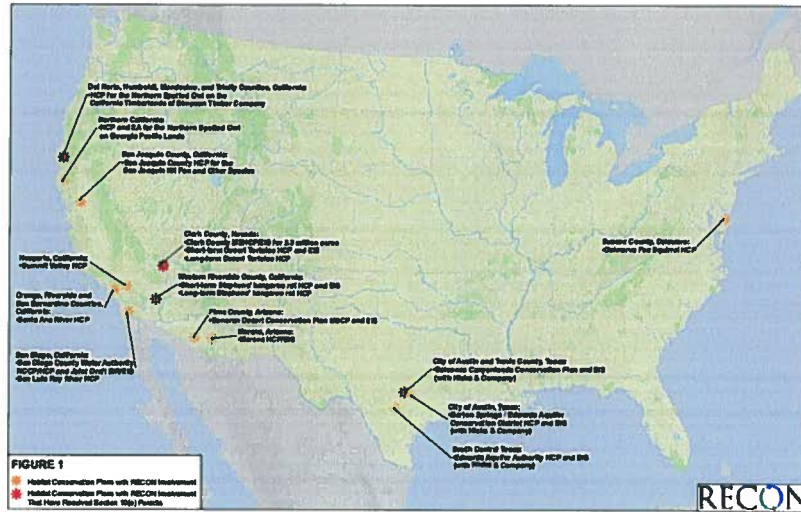
### Representative Projects:

- Stephens' Kangaroo Rat HCP
- Clark County MSHCP
- Hesperia HCP
- Sonoran Desert Conservation Plan
- Barton Springs/Edwards Aquifer District HCP

## Habitat Conservation Plans

- Section 10(a) Permits and Section 2081 Permits
- Endangered Species Surveys
- Biological Sampling, Monitoring, and Analysis
- GIS Mapping and Analysis
- Reserve Design
- Adaptive Management Programs
- Public Participation and Outreach Programs
- Stakeholder Facilitation, Consensus Building
- Resource Agency Coordination
- Implementing Agreements



**ENVIRONMENTAL CONSULTANTS, INC.**

- Founded in 1991 – Located in Sacramento
- 18 years experience in El Dorado County
- Biological, Wetlands, and Arborist Studies
- Endangered Species Protocol Surveys
- CEQA - NEPA
- Permitting and Mitigation
- CAD/GIS Mapping



**SYCAMORE**  
ENVIRONMENTAL CONSULTANTS, INC.

**INRMP and Local Conservation Plans**

- **River Islands at Lathrop**
  - Riparian Brush Rabbit Preserve and Endowment
  - Swainson's Hawk DFG 2081 Habitat Management Plan
- **Vandenberg AFB North Cantonment INRMP**
  - Biological & Wetland Sections
- **Naval Postgraduate School, Monterey INRMP**
  - Wetlands Section
- **French Camp Mitigation Bank, San Joaquin Co.**
  - Valley Elderberry Longhorn Beetle



About 140 projects since 2000.

- 125 Private projects
- 15 Public projects
- 8 Protocol red-legged frog surveys
- Valley elderberry longhorn beetle, Horned lizard, Burrowing owl, Western pond turtle, & IBC issues
- 37 special-status plant occurrences of 11 different species reported to CNDDB



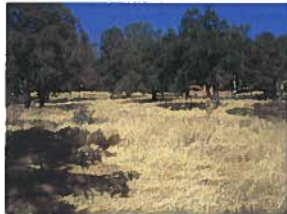


### Green Valley Road Bridge at Weber Creek

Biological, Wetlands & Cultural Studies  
Protocol CA red-legged frog survey  
IBC Corridor Evaluation

### Indian Creek Project

Biological & Wetlands  
Protocol CA red-legged frog survey  
Oak Canopy Impact Analysis based on OWMP  
Compared IBC corridors to Saving & Greenwood



### Lomita Way Project

Biological, Wetlands, and Arborist Studies  
Oak Mitigation Plan GP Policy 7.4.4.4 (Pre-OWMP)

## Rikki Schroeder

- Experience crafting solutions and compromises among diverse stakeholder groups.
- Experience preparing both environmental and planning documents
- Experience crafting programs that respect the financial and political realities and limitations that exist in all local jurisdictions.

## Rikki Schroeder

- Served on several citizen advisory groups
  - Consensus based natural resource planning efforts
- Combination of
  - Biology education
  - Many years experience with landowners and builders
  - Ability to understand multiple view points and concerns
  - Ability to craft solutions that find common ground with these diverse interests.

## Rikki Schroeder

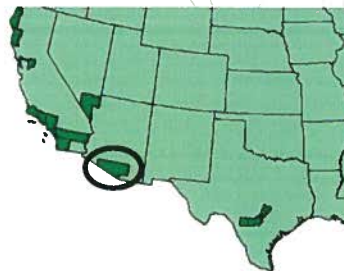
- EIRs and major planning documents
  - Precise Plans
  - Specific Plans for major planned communities.
- Natural resource plans, implementation plans and programs.
- Requirements for various types of documents in terms of
  - Implementing language
  - What each can and cannot achieve.

***The best program in the world is useless if it is not affordable or cannot be implemented.***

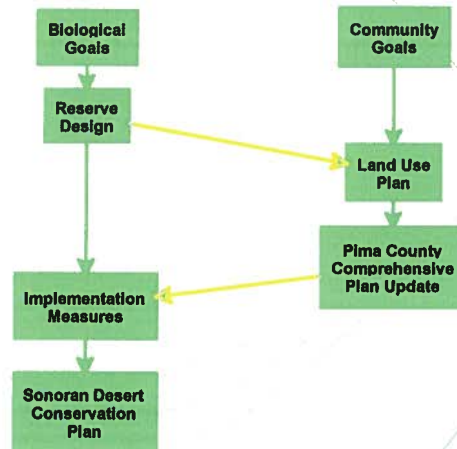
## Project Example

### Sonoran Desert Conservation Plan

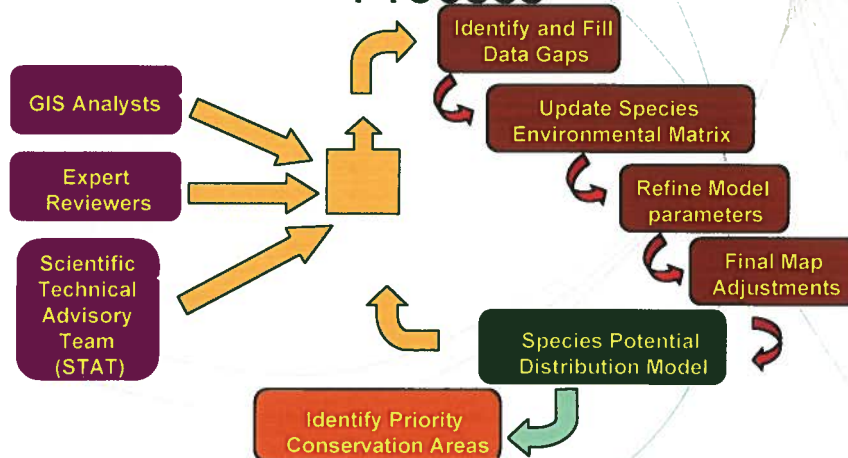
- Pima County, Arizona
- Part of Comprehensive Plan Update
- Integrated with
  - Ranching
  - Cultural & Historic Resources
  - Recreation
- HCP a secondary goal



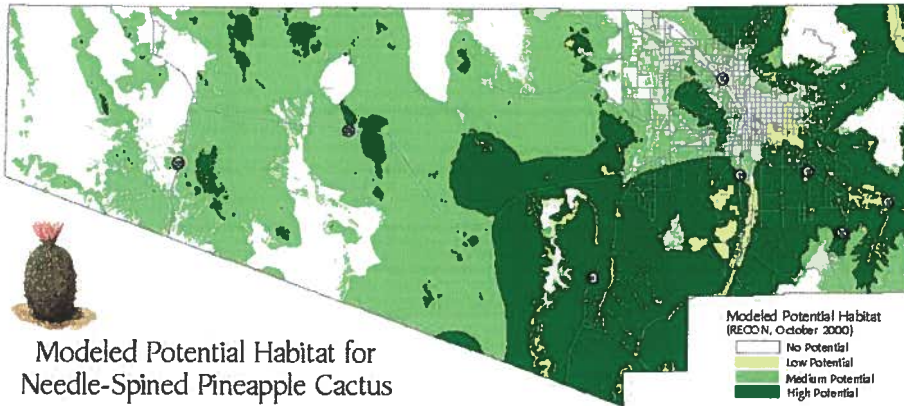
## SDCP Process Overview



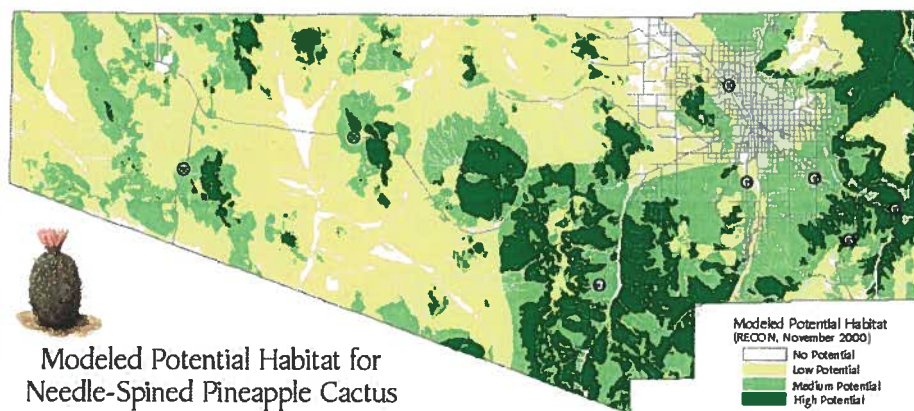
## SDCP Interactive and Iterative Process





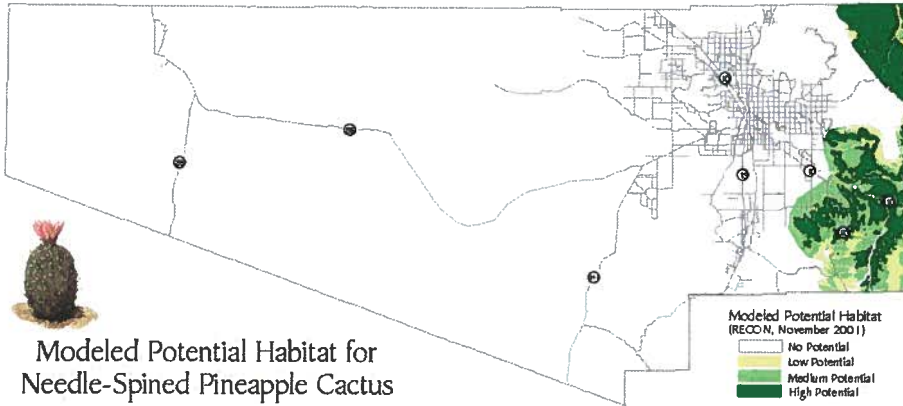


Modeled Potential Habitat for  
Needle-Spined Pineapple Cactus

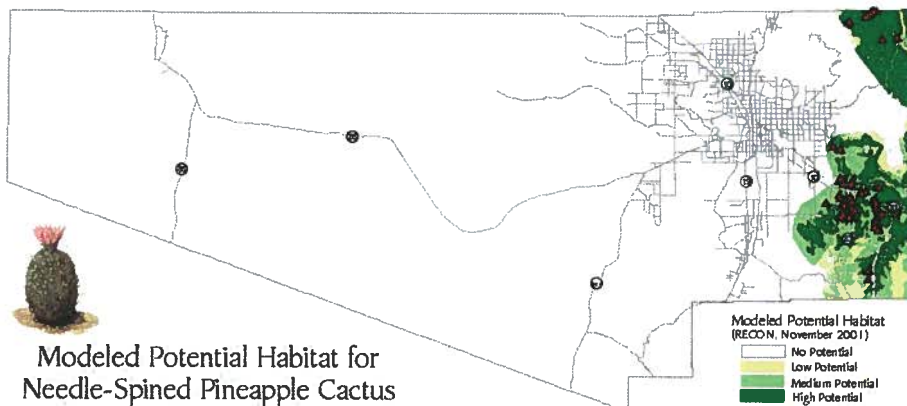


Modeled Potential Habitat for  
Needle-Spined Pineapple Cactus

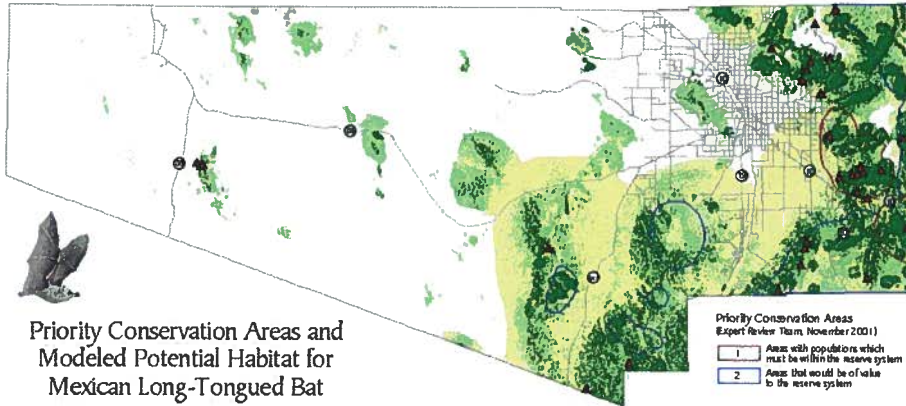




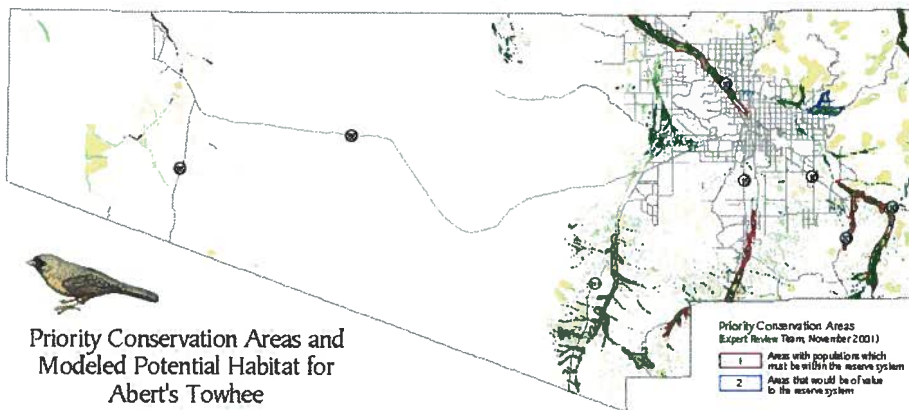
Modeled Potential Habitat for  
Needle-Spined Pineapple Cactus



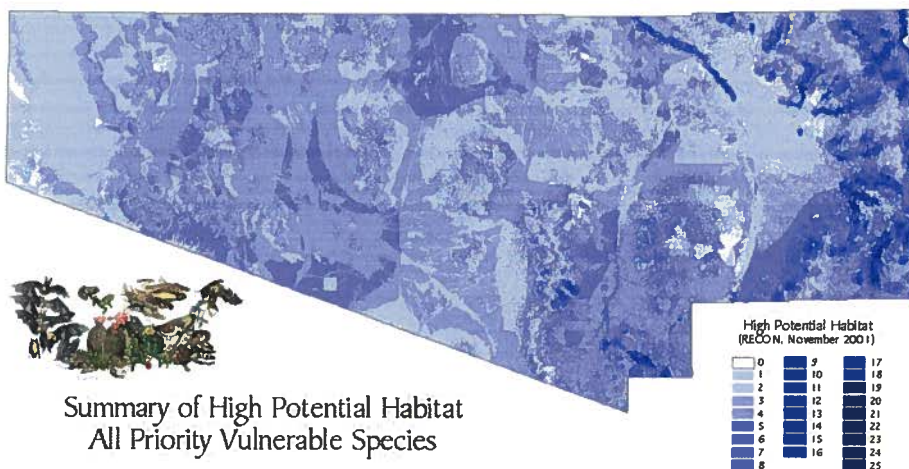
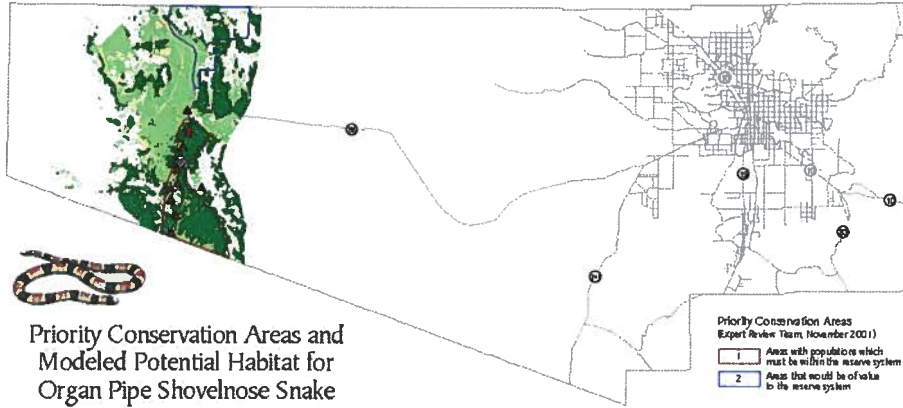
Modeled Potential Habitat for  
Needle-Spined Pineapple Cactus

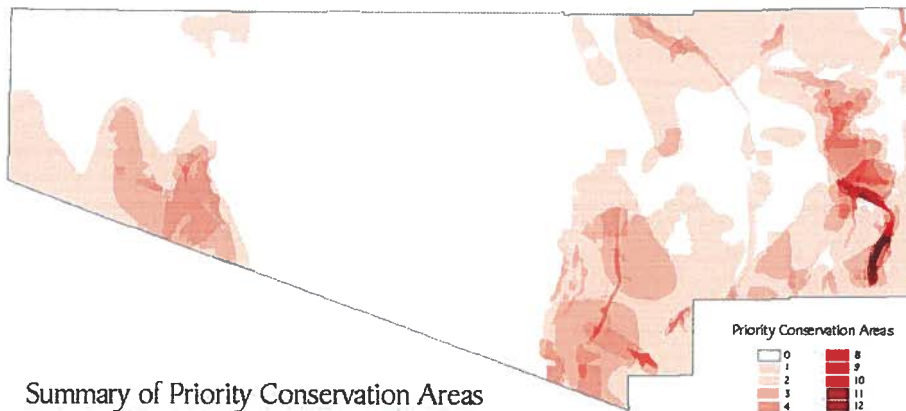
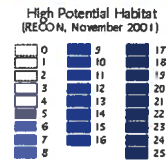
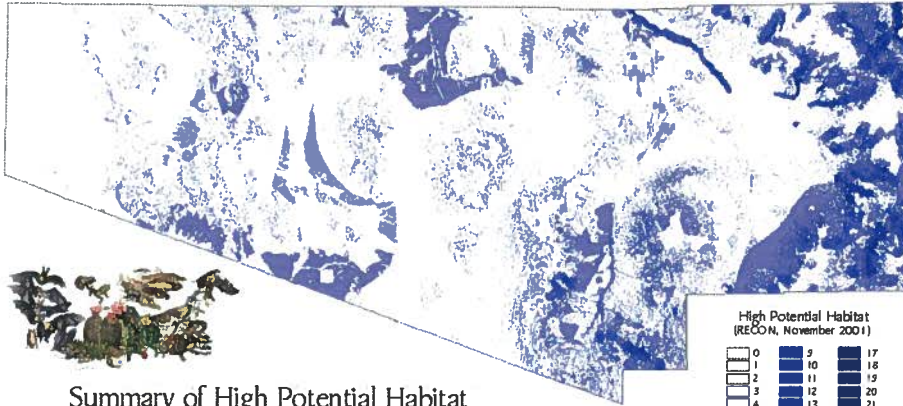


Priority Conservation Areas and Modeled Potential Habitat for Mexican Long-Tongued Bat



Priority Conservation Areas and Modeled Potential Habitat for Abert's Towhee

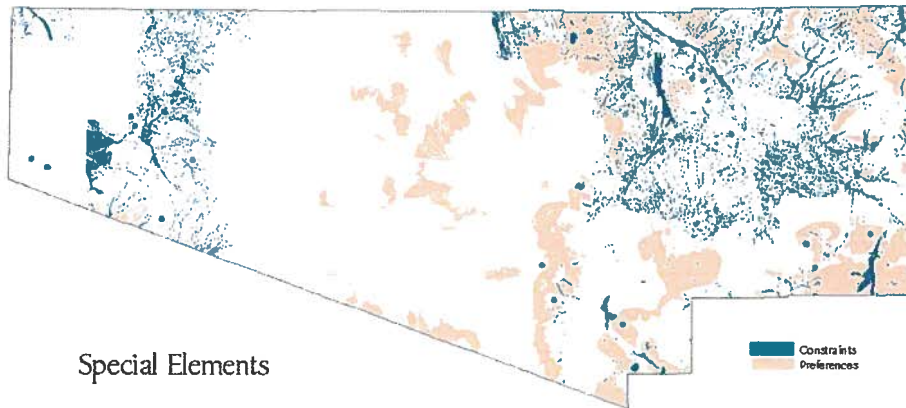






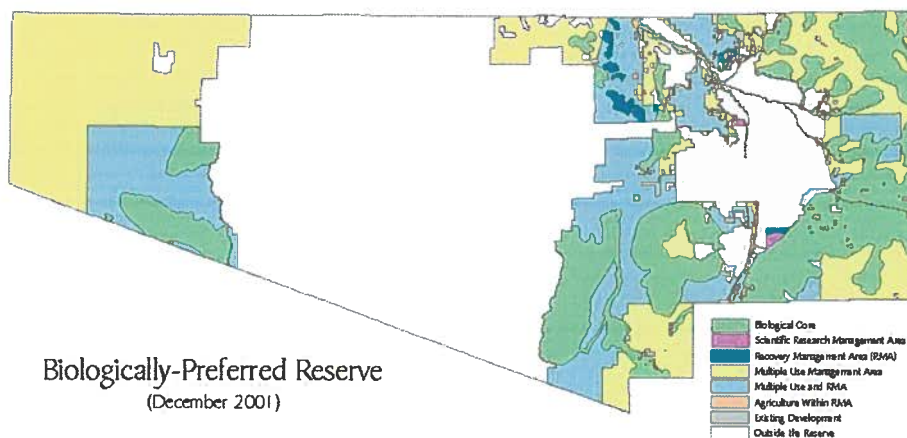
RECON

A Company of Specialists

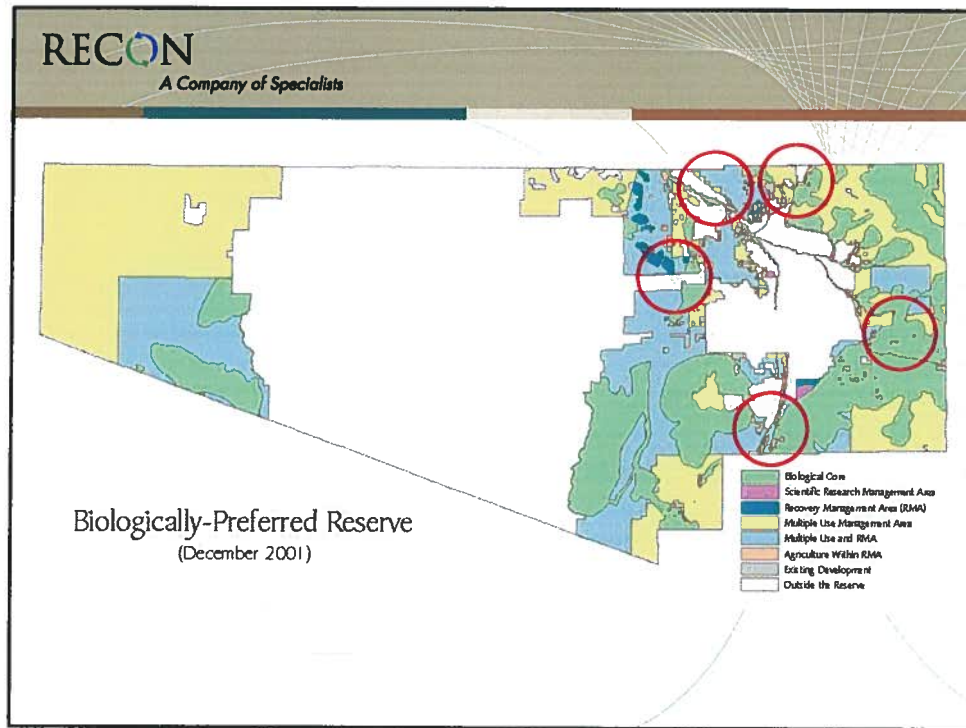


RECON

A Company of Specialists







**RECON**  
A Company of Specialists

## SDCP Implementation

- Update to County Comprehensive Plan
- Land acquisition through bond issue
- Mitigation accomplished by County
- HCP may or may not be requested

## El Dorado County INRMP

### Map Important Habitat and Connectivity

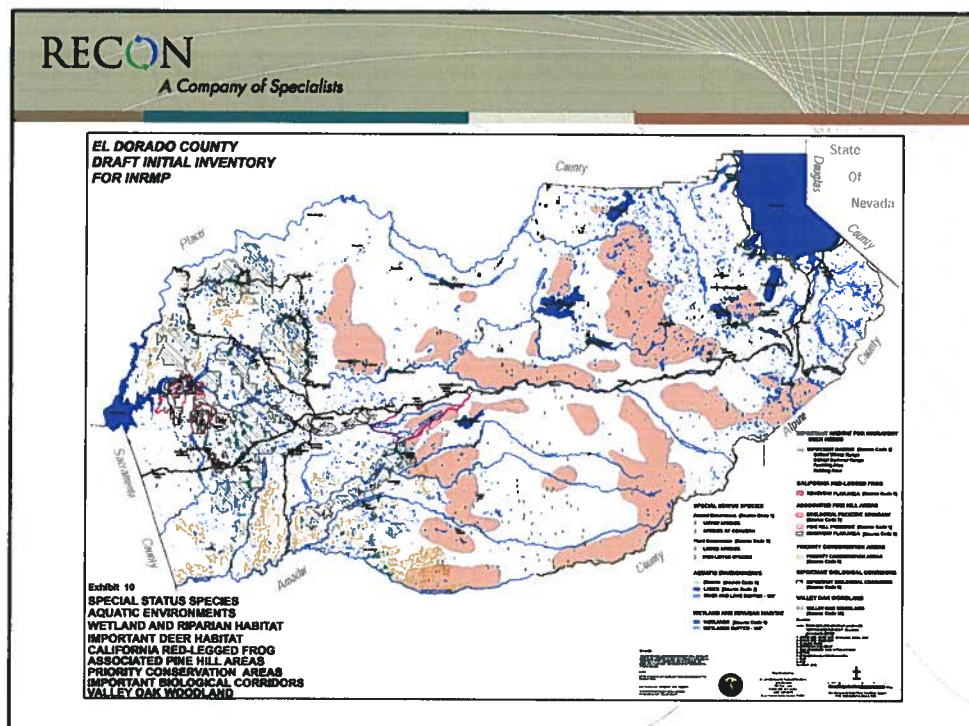
- a) Facilitate discussions regarding GPP 7.4.2.8 definitions
- b) Update INRMP Initial Inventory Map
- c) Develop Indicator Species List
- d) Evaluate north-south wildlife movement linkages



## Map Important Habitat and Connectivity

**e) Documents/action:**

- Prepare Important Habitat Inventory Report and Map (Administrative draft, Public review draft, and Final)
- Prepare Indicator Species Report (Administrative draft, Public review draft, and Final)
- Prepare Analysis of North-South Wildlife Movement Corridors (Administrative draft, Public review draft, and Final)



## Alternative Approaches for INRMP

- a) Identify range of alternative approaches
- b) Scope of work for compliance with GPP 7.4.2.8
- c) Documentation:
  - Prepare INRMP Implementation Alternatives Report (Administrative draft, Public review draft, and Final)



## Objective 7.4.2: Identify and Protect Resources

- Identification and protection, where feasible, of
  - critical fish and wildlife habitat including deer winter, summer, and fawning ranges;
  - deer migration routes;
  - stream and river riparian habitat;
  - lake shore habitat;
  - fish spawning areas;
  - wetlands;
  - wildlife corridors; and
  - diverse wildlife habitat.





The INRMP shall include:



- A. Habitat Inventory
- B. Habitat Protection Strategy
- C. Mitigation Assistance
- D. Habitat Acquisition
- E. Habitat management
- F. Monitoring
- G. Public Participation
- H. Funding

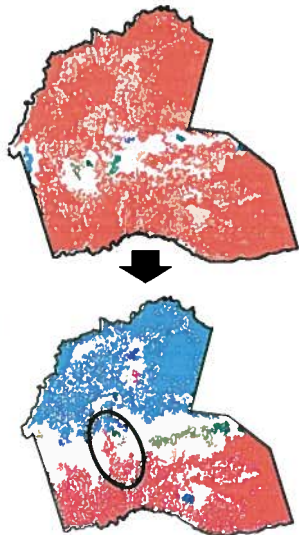
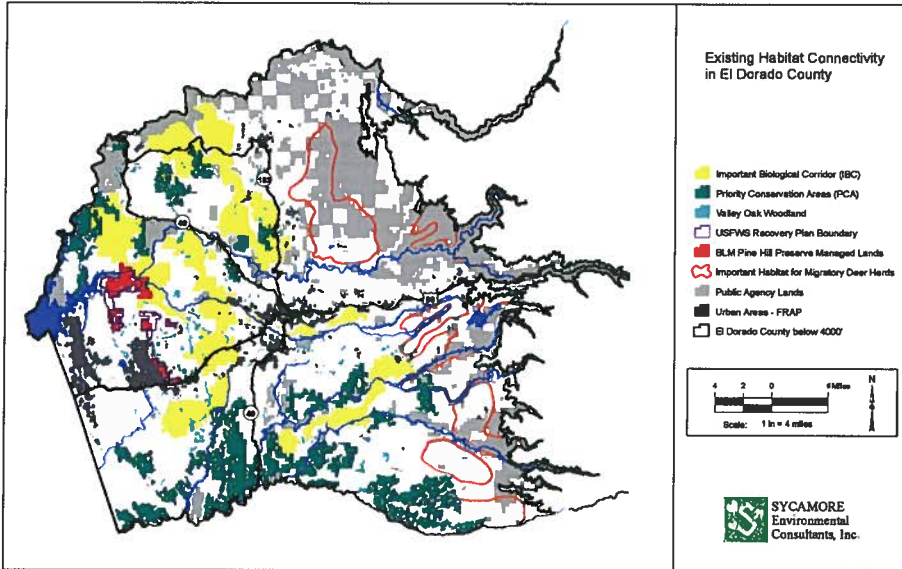
## Policy 7.4.2.8

Develop within five years and implement an Integrated Natural Resources Management Plan (INRMP) that

- identifies important habitat in the County and
- establishes a program for effective habitat preservation and management.







### Saving & Greenwood . . .



- "Wildland habitat" only larger than 247 acres and over 164 ft from structures
- "Wildland habitat" connectivity, not oak corridors
- Assumed development on 40% slopes
- Not species based
- Urban development did not include roads or highways

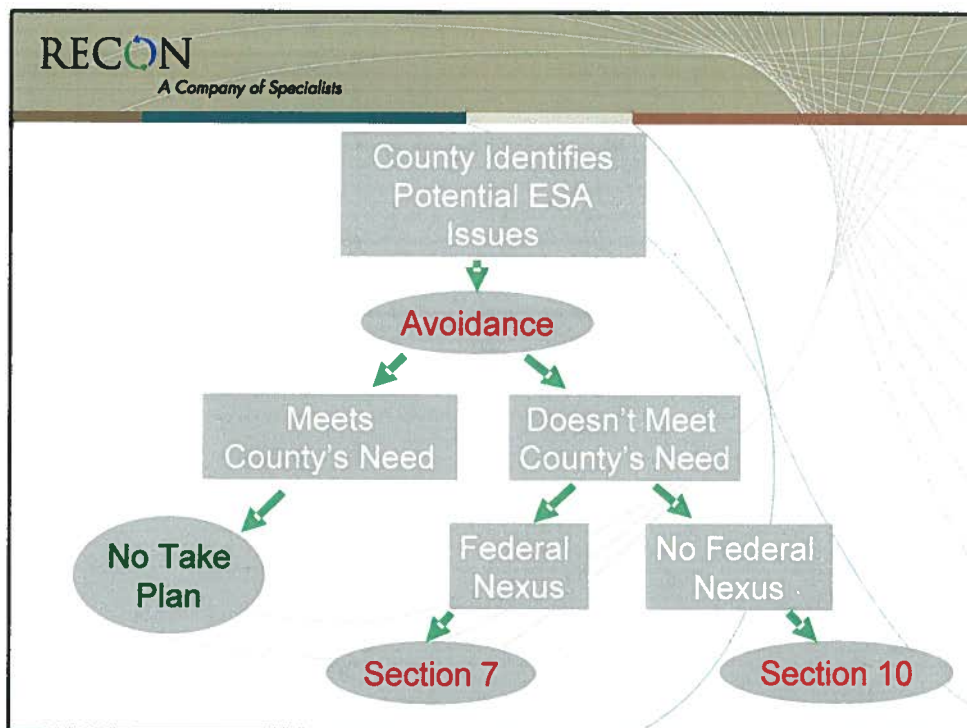
### Paper concluded...

- GP build-out would separate north/south wildland habitat connectivity.
- Suggested parcel acquisition near Greenstone Road to maintain connectivity.
- Weber Creek not considered as providing north/south wildland connectivity.

## Large-scale vegetation types to supplement "indicator species"

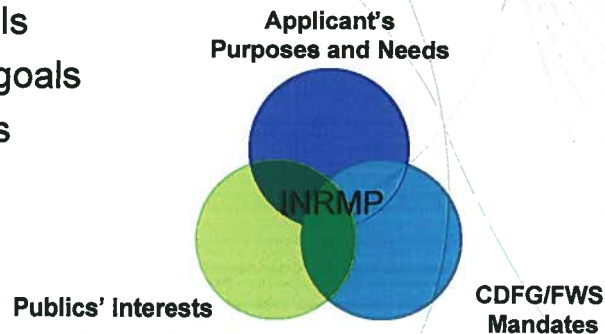
Any analysis of wildlife ultimately depends on the habitat present, and habitat is largely defined by vegetation type such as oak woodland, chaparral, conifer forest, or grassland, also . . .

1. Large-scale vegetation maps are already available (FRAP), 
2. County GP and OWMP are already based in part on FRAP, as was Saving & Greenwood. 
3. Vegetation mapping allows for historic comparisons of habitat change and can be updated for the every three year reviews.
4. Useful for predicting wildlife movement patterns for a range of wildlife species.



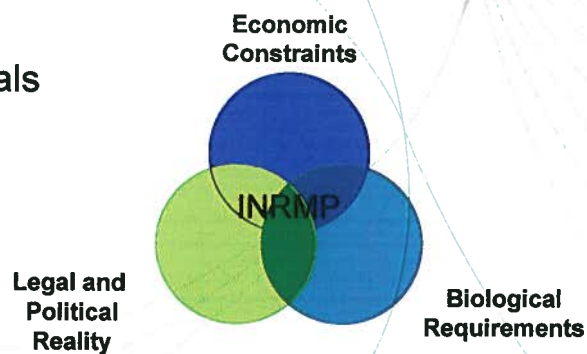
## Goals of the INRMP Process

- County's goals
- CDFG/FWS goals
- Publics' goals



## Goals of the INRMP Process

- County's goals
- CDFG/FWS goals
- Publics' goals



## Our Approach

- Build on existing data and analyses
- Clarify the goals and objectives of the INRMP process
- Combine and balance the available tools: land use regulations and acquisition
- Provide realistic set of alternatives/outcomes
- Work toward consensus

## Communication

- Structure the process around key deliverables
- Workshops coordinated with regular BOS, PAWTAC, and ISAC meetings
- Review and receive input on key documents

## Communication

- Build consensus in a step-wise process, focusing on:
  - identification of appropriate goals and objectives to achieve the specific goals of the General Plan Policies
  - clear presentation of strengths/limitations of technical information;
  - appropriate strategy or strategies to address the General Plan Policies; and
  - other strategies or alternatives that could address the General Plan Policies and achieve additional goals in a cost effective manner.

## Communication

- Success in utilizing this approach in other large complex regional efforts
- Key has been our ability to develop and maintain the trust and confidence of all of the participants:
  - staff and elected officials,
  - private and public interests,
  - environmental community, and
  - regulatory agencies.



## Benefits and Strengths

- Balance resource conservation needs with land uses
- Strong understanding of the region
- Objective approach
- Award-winning HCPs
- Dedicated and responsive team



Thank you



RECON

*A Company of Specialists*

RESPECT  
INTEGRITY  
TRUST

*Since 1972*

[www.recon-us.com](http://www.recon-us.com)

