



RESOLUTION NO. 171-2013
OF THE BOARD OF SUPERVISORS OF THE COUNTY OF EL DORADO

WHEREAS, the County of El Dorado is mandated by the State of California to maintain an adequate and proper General Plan; and

WHEREAS, because of that mandate El Dorado County's General Plan and the various elements thereof must be continually updated with current data, recommendations, and policies; and

WHEREAS, the Community Development Agency, Development Services Division, and the Planning Commission have made recommendations to the Board of Supervisors regarding potential amendments of the Land Use Element of the General Plan; and

WHEREAS, the Board of Supervisors has reviewed and held public hearings on the recommended amendments to the land use element; and

WHEREAS, the Board of Supervisors finds that the proposed amendments to the General Plan are consistent with all elements of the General Plan not otherwise amended.

NOW, THEREFORE, BE IT RESOLVED that the County of El Dorado Board of Supervisors hereby approves and accepts the environmental documents on the following amendments to the General Plan, and approves and adopts the following amendments to the General Plan based on the findings and reasons set forth in the staff reports and Planning Commission's actions, except as may be noted herein:

1. POLLOCK PINES AREA – Commercial (C) to Multi-family Residential (MFR), consisting of 0.31 acre, identified by Assessor's Parcel Number 101-281-04 being described as Section 36, Township 11 North, Range 12 East, M.D.M., as shown in Exhibit A.

PASSED AND ADOPTED by the Board of Supervisors of the County of El Dorado at a regular meeting of said Board, held the 12 day of November, 2013 by the following vote of said Board:

Ayes: Santiago, Briggs, Nutting, Mikulaco, Veerkamp

Noes: none

Absent: none

Attest:

James S. Mitrising

Clerk of the Board of Supervisors

By: _____

Deputy Clerk

Chairman, Board of Supervisors

Ron Briggs

POR. NE1/4 SEC. 36., T.11N., R.12E., M.D.M.
 POLLOCK PINES SUBDIVISION

Tax Area Code

101:28

13-1389 E 2 of 2

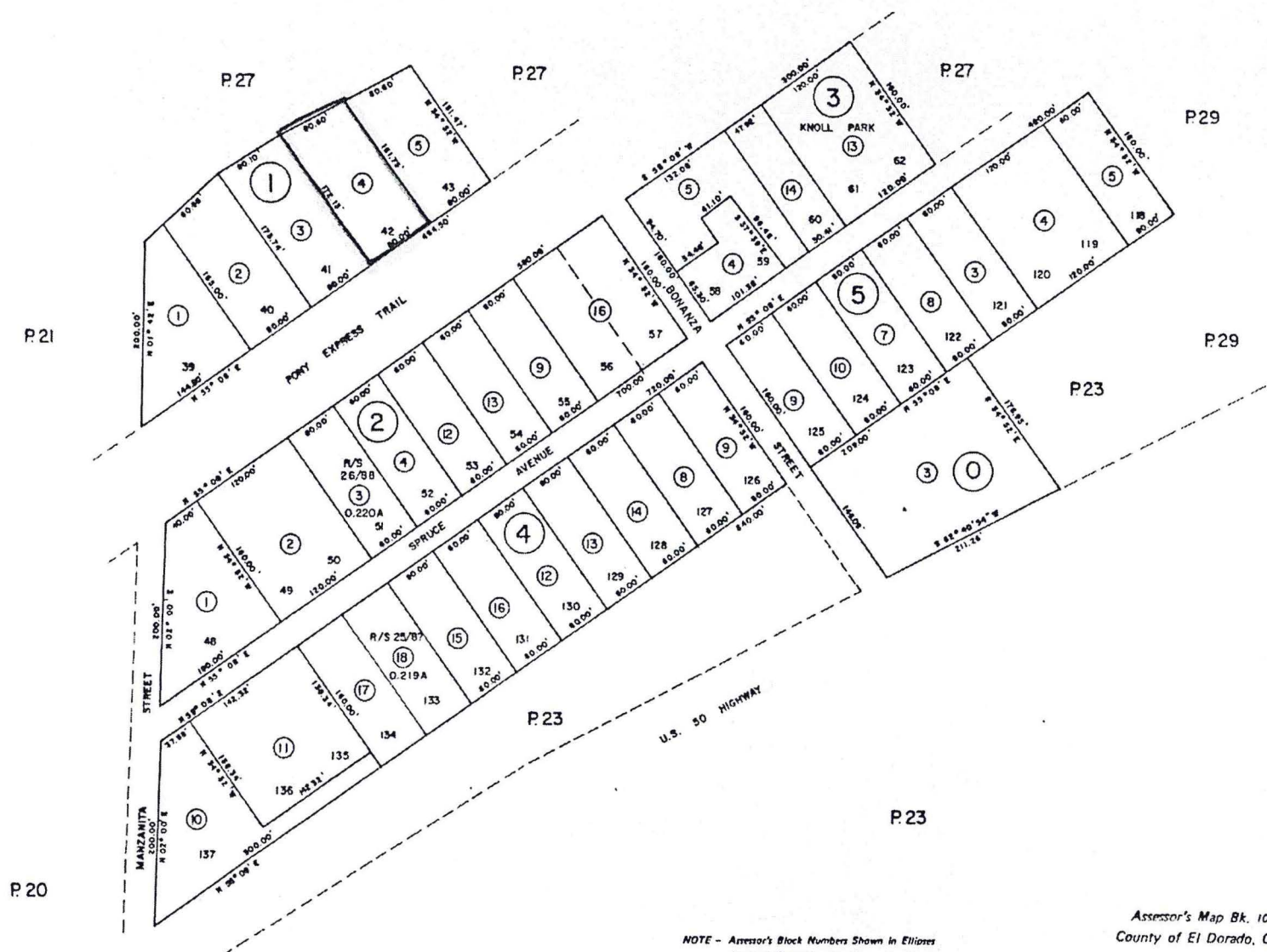


EXHIBIT A

NOTE - Assessor's Block Numbers Shown in Ellipses
 Assessor's Parcel Numbers Shown in Circles

Assessor's Map Bk. 101 - Pg. 28
 County of El Dorado, California

OCT 27 2003