

Senate Bill 844 Adult Local Criminal Justice Facilities Construction (ALCJF) Update

El Dorado County's – Recovery, Rehabilitation and Re-entry Facility

Presented By:

**Captain Tasha Thompson
El Dorado County Sheriff's Office**

**Laura Schwartz / Chuck Harrell
Facilities Division
Chief Administrative Office**

September 12, 2023

Presentation Topics

- A Recap: El Dorado County Jails and SB844 Adult Local Criminal Justice Facilities Construction (ALCJFC) award; goals and objectives.
- The changing landscape of California and why we applied and were awarded the SB844 funding.
- Concerns with our existing jail facilities.
- What the jail expansion would mean to the County.
- Project description.
- Cost to County.
- Impacts of not funding the SB844 project.

State Funding of Awards

- On September 19, 2017, Board of Supervisors unanimously accepted the SB844 award of \$25 million for the design and construction of the new Placerville Recovery, Rehabilitation and Re-Entry Facility. (Resolution 024-2017)
- The award is funded through lease revenue bonds.
- The State Public Works Board (SPWB) will hold the property. The SPWB will lease it to the BSCC, who will sub-lease it to the County.
- El Dorado County is **NOT** responsible to the State for debt service or rent payments.
- Once the bonds are paid in full, El Dorado County will re-claim the deed to the land.

SB844's Legislative Goal: Promoting Public Safety Through Jails

- In June 2016, it was declared that California's current challenges in managing jail populations include:
 - Overcrowding and aging jails.
 - Piecemeal, erratic, and incomplete responses to dealing with those problems.
- SB844 became law authorizing funding for jail construction with an emphasis on improved housing and expanding program and treatment space.
- The legislature found that improving jails' access to health and welfare services for inmates and their families would reduce recidivism and serve a critical purpose in promoting public safety.

El Dorado County Jails Population Information

Placerville Jail – 1988

BSCC Rated Capacity 303

Average Daily Population 237

South Lake Tahoe Jail–1973

BSCC Rated Capacity 158

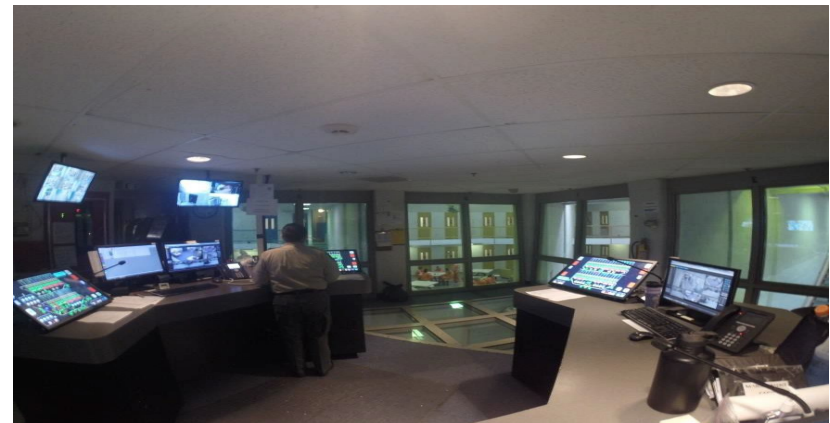
Average Daily Population 105

Our Current Average Daily Population Between Both Jails – 342

Males 295, Females 60

26% are AB 109 inmates

90% are in custody for felonies.



These jails are like small cities in operation 24/7, with a strict schedule. We serve up to 1,400 meals a day, provide laundry, medical, mental health care, recreation, education, transportation, and commissary services.

Litigation Affecting Jails in California

Lawsuits from inmate advocacy groups alleging:

- American Disabilities Act (ADA) deficiencies.
- Inadequate mental health services and medical care.
- Isolating people in small cells.
- Inhumane and unsanitary conditions detrimental to mental health.
- Disabled and mentally ill inmates segregated and excluded from programs and services that reduce recidivism.
- Deliberately indifferent to suicide hazards.
- Lack of meaningful access to exercise and recreation.

Identified Jail Concerns

- American with Disabilities Act compliance.
- Increased female population.
- Managing inmate classification housing options.
- Increased and more complex medical and mental health treatment.
- Inadequate access to professional/attorney visits.
- Insufficient programming space to provide equal access to educational and self-help programming.
- Insufficient recreation yard space for Title 15 compliance.
- Aging facilities.

Americans with Disabilities Act

- The existing EDC Jails ADA deficiencies will necessitate a significant capital investment to bring existing facilities into code compliance.
- Rather than committing capital resources to renovate the County's existing jail, it is the intent to design and construct the expansion in a way that addresses all current El Dorado County Jail ADA noncompliance issues.

Female Population

- The Placerville Jail was designed with only one housing unit designated for females. This was adequate in 1988. Today our female inmates occupy two housing units, one of which was designed for males. Additionally, we often send overflow female inmates to our jail in South Lake Tahoe, due to lack of space in Placerville.
- The increase of females in custody trend is expected to continue.
- There has been an increase of inmates carrying pregnancies to term requiring increased medical services.
- The jail expansion will allow a more comprehensive use of the female housing space and reduce costs from transporting females between facilities to avoid capacity releases.

Medical and Mental Health

- New medical wing will add 15 medical/mental health cells, with exam and screening rooms.
- Adds pharmacy and laboratory space.
- Reduces isolation of the mentally ill.
- Improve inmate safety.
- Reduces suicide hazards.
- Improve access to recreation and programming for inmates with medical and mental health issues.

Placerville Facility Expansion Plan

The plan will not increase inmate capacity but will include the following:

- Creates separate and secure female housing areas.
- Housing for the mentally ill to promote integration and reduce segregation.
- Space for restoration of competency and other mental health services.
- Improved spaces for medical treatment and services.
- Operational space for other county entities for various re-entry programs.
- Additional attorney and professional visiting space.
- Additional inmate programming/classroom space.
- Additional inmate recreational yards.
- New locker room space for female staff.

Benefits to other County Agencies and Partners

Ability for Sheriff's Office Crisis Intervention Team, Homeless Outreach Team, and Wellpath to collaborate with Health and Human Services, Probation and other entities regarding medical/mental health services, homelessness and re-entry services.

- CalAIM will require work and interview spaces for Health and Human Services staff.
- Space for confidential psychiatric and psychologist evaluations and assessments.
- Space for restoration of competency facilitation.
- Improved security for staff and clients.
- Reductions in time waiting for visiting booth(s) for Child Protective Services, Public Guardian, Public Defender and other entities.

This facility expansion will help comply with new State mandates and promote further efficiencies by enhancing staff productivity.

Future Repurposing of Vacated Space in Current Facility

- Current female housing and two dormitories will be repurposed for re-entry housing and programming space.
- Existing medical wing will be repurposed to accommodate higher volume of intakes with special needs.

Project Description

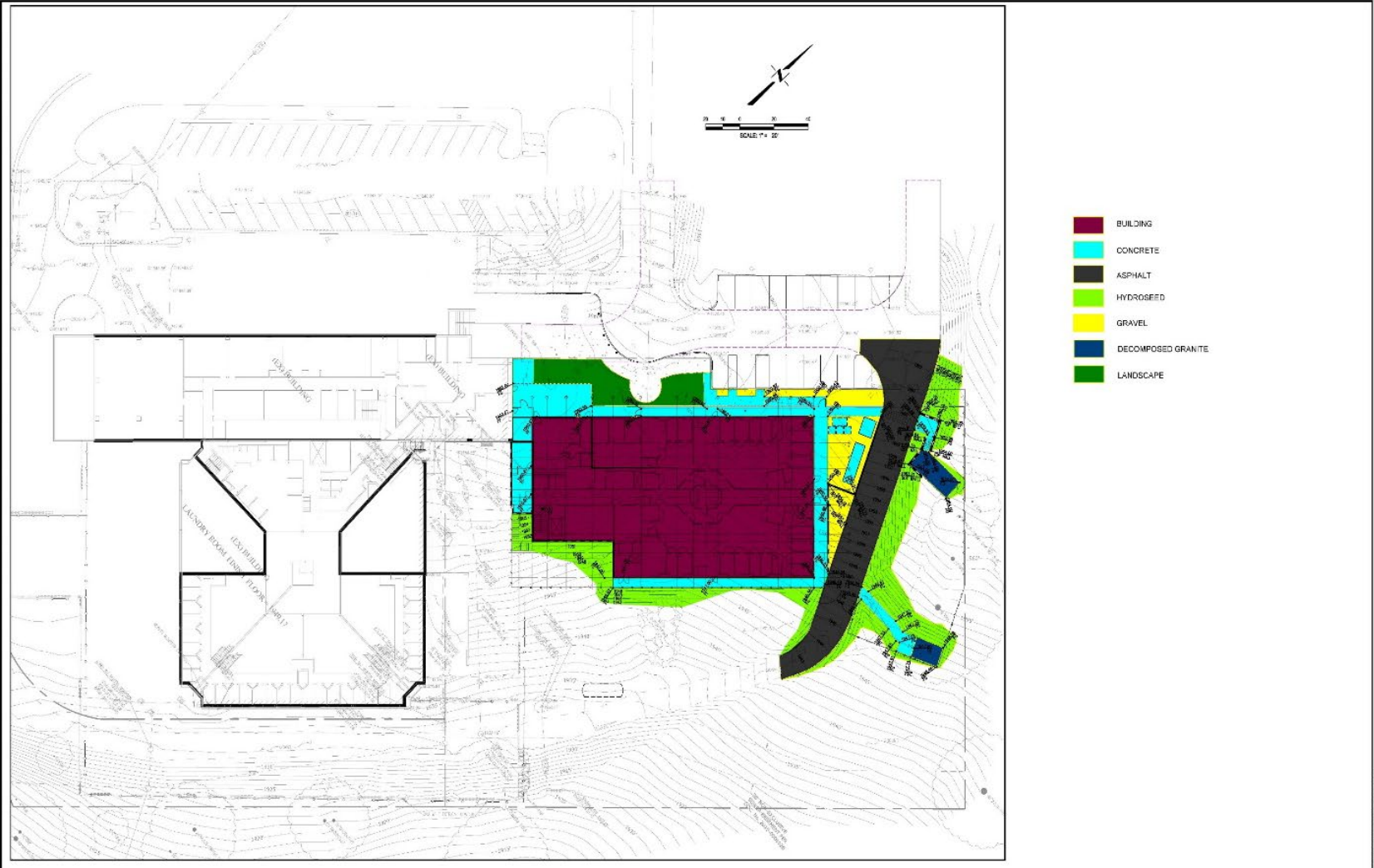
This project consists of the design and construction of an approximate 22,390 sq/ft, two-story addition and related site work adjacent to the existing facility, on approximately 0.65 acres of land owned by the County.

The new two-story structure will include space for housing units comprised of single bunk, double bunk, and dormitory configurations, including dayroom, restroom/shower facilities, support spaces, counseling, and secured recreation yards.

The project includes administrative, health services, program, storage, in-person visitation, and attorney counseling spaces. This will include single, double, and ADA occupancy special use cells, medical offices, medical and records storage, pharmacy, exam rooms, mental health, nurses' station, staff work rooms, break rooms and a female locker room.

The proposed project will be a highly functional, ADA accessible, energy efficient correctional facility.

Proposed Project Site



Proposed Project Elevations



1 NORTH ELEVATION -- WITH SCREEN WALL

1/8" = 1'-0"



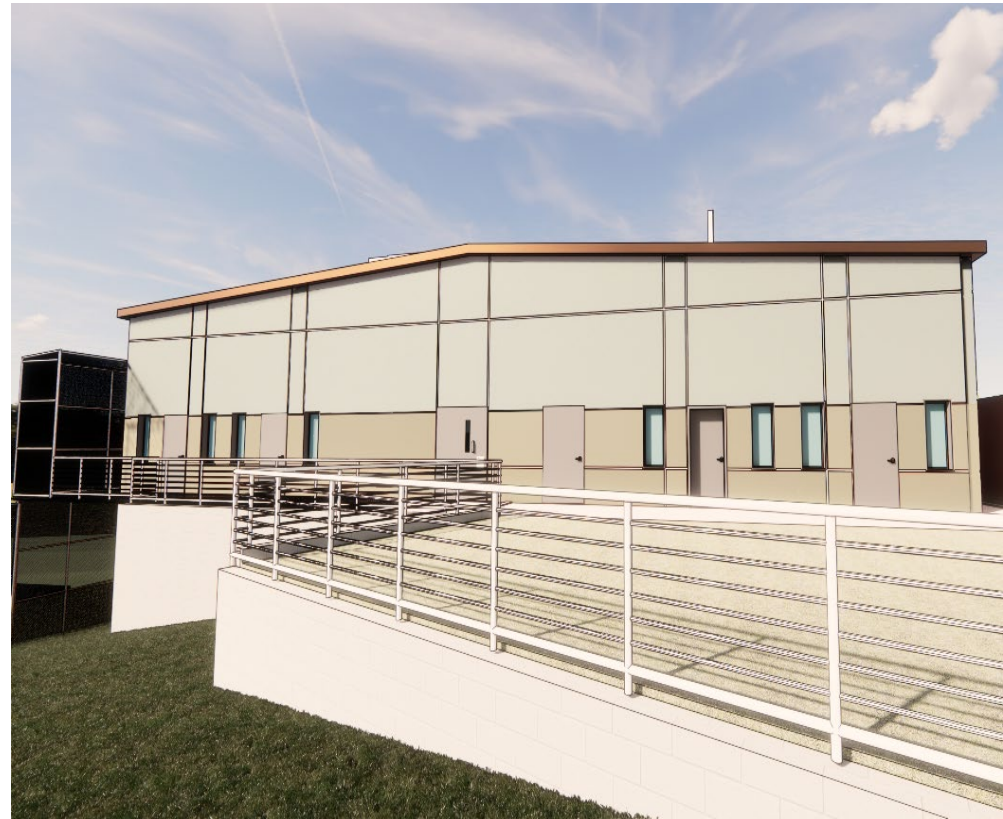
2 NORTH ELEVATION -- BUILDING ONLY

1/8" = 1'-0"

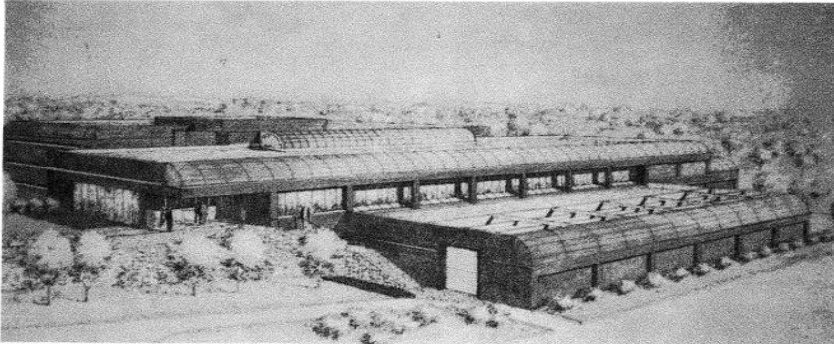
Proposed Exterior Renderings



Proposed Exterior Renderings

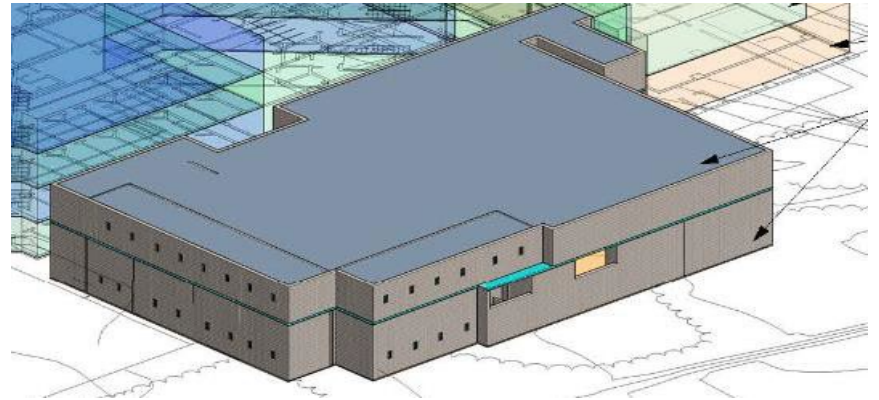


1985 - Current Jail
\$14,000,000.00
86,000 Square Feet



EL DORADO COUNTY
DETENTION FACILITY
PLACERVILLE, CALIFORNIA

2017 - State Award
\$25,000,000.00
27,000 Square Feet



2023 – Current Cost
\$40,500,000.00
22,390 Square Feet



Total Anticipated Costs

Roebbelen design and construction cost (includes a 5% contingency) - \$37,375,565

Total County soft cost for construction- \$3,124,435.

- 3rd party plan check and inspection services.
- Project/construction management, commissioning, close out.
- Agencies and utility fees (PG&E , EID , City of Placerville, AT&T, AQMD, Department of General Services, State Fire Marshal, Local Fire Marshal, audit/other).

Overall projected project cost - \$40,500,000.

Proposed Schedule

Design Duration – 9 months

- Fourth quarter 2023-third quarter 2024.

Construction Duration – 17 months

- Third quarter 2024-fourth quarter 2025.
- Roebbelen Contracting Inc. submitted a conservative construction schedule based on extended agency review times. They have agreed to expedite the project schedule which will be predicated on agency review periods.

Impacts of Not Funding the SB844 Recovery, Rehabilitation and Re-Entry Facility

- Loss of \$25 million in SB844 funding.
- Continued lack of compliance with ADA and other code violations may subject the County to costly litigation.
- Current jail design is inadequate to comply with current Title 15 requirements.
- Medical and mental health services and space are inadequate for current State standards.
- Renovation of existing jails to meet current standards would prove difficult, costly and heavily impact daily jail operations.
- Potential delays will ultimately increase project costs.

Questions?