

RECEIVED
BOARD OF SUPERVISORS
EL DORADO COUNTY
2:17 pm, Jan 24, 2011

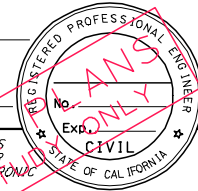
3

LATE DISTRIBUTION
Date 2:18 pm, Jan 24, 2011

SOUTH FORK AMERICAN RIVER BRIDGE






DIST	COUNTY	ROUTE	POST MILES TOTAL PROJECT	SHEET No.	TOTAL SHEETS
03	Ed	49	24.0		

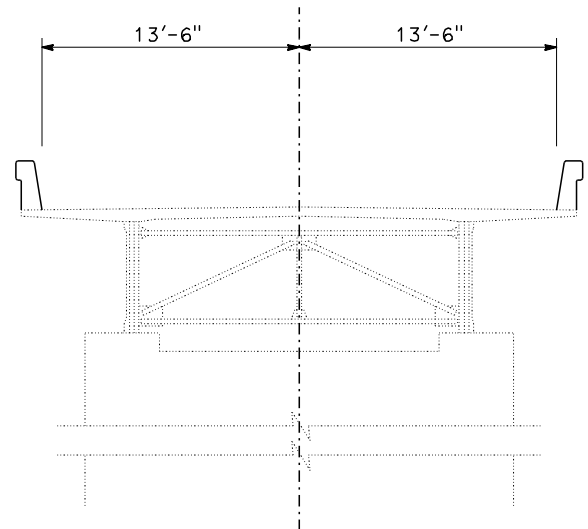
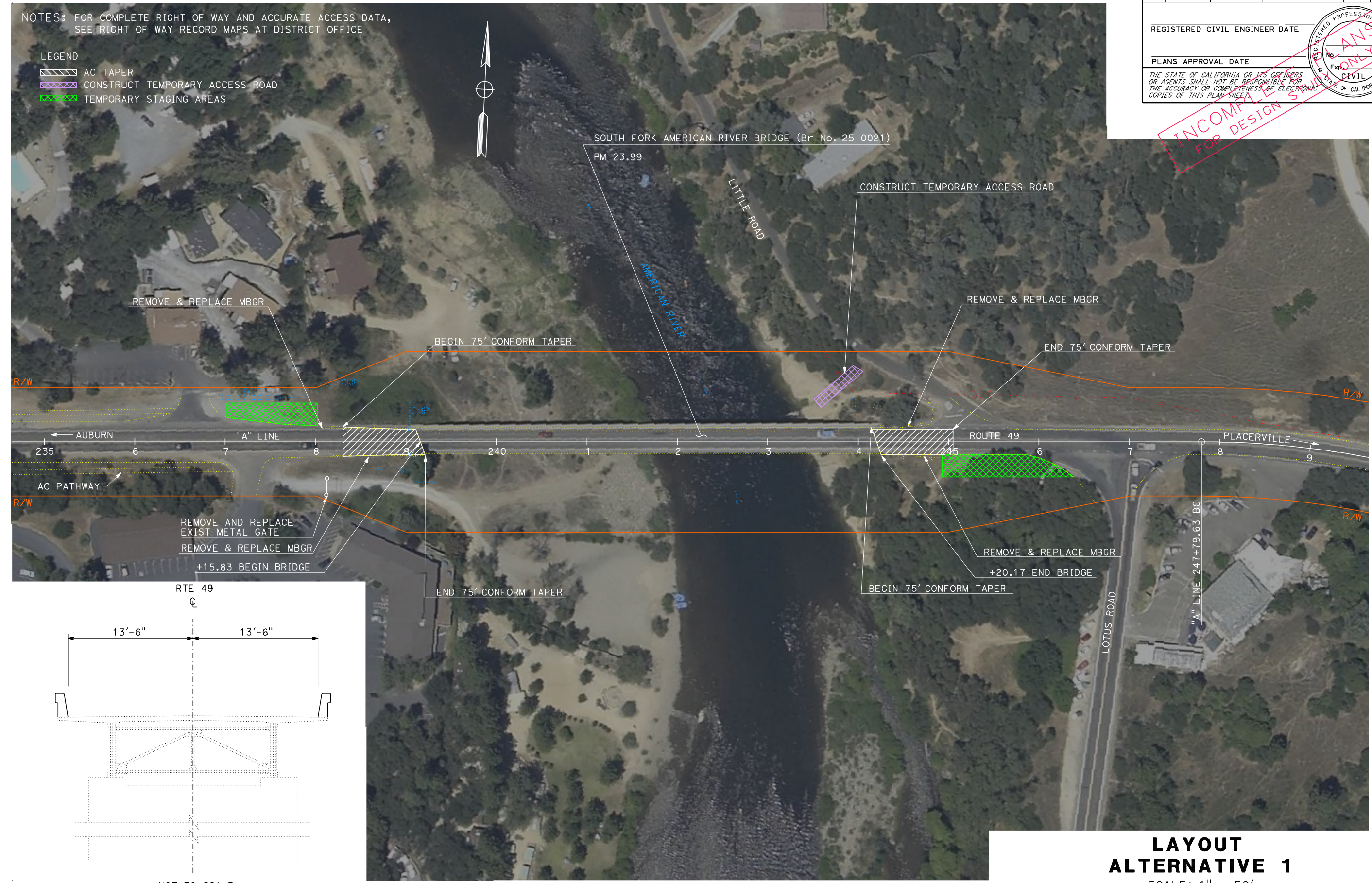
REGISTERED CIVIL ENGINEER DATE	
PLANS APPROVAL DATE	

THE STATE OF CALIFORNIA OR ITS OFFICERS OR AGENTS SHALL NOT BE RESPONSIBLE FOR THE ACCURACY OR COMPLETENESS OF ELECTRONIC COPIES OF THIS PLAN SHEET.

INCOMPLETE FOR DESIGN SUBMITTAL

NOTES: FOR COMPLETE RIGHT OF WAY AND ACCURATE ACCESS DATA, SEE RIGHT OF WAY RECORD MAPS AT DISTRICT OFFICE

- LEGEND
-  AC TAPER
 -  CONSTRUCT TEMPORARY ACCESS ROAD
 -  TEMPORARY STAGING AREAS



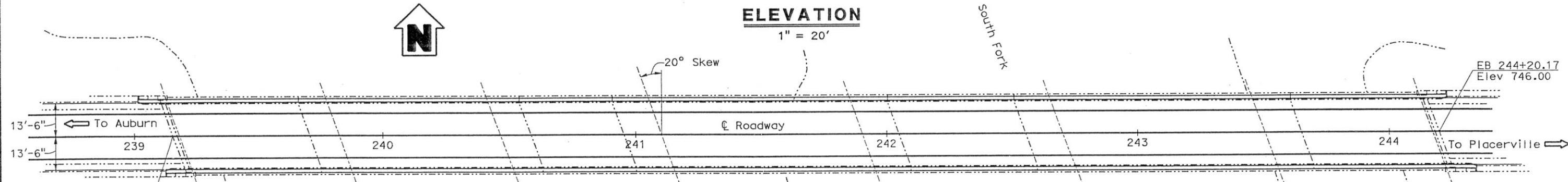
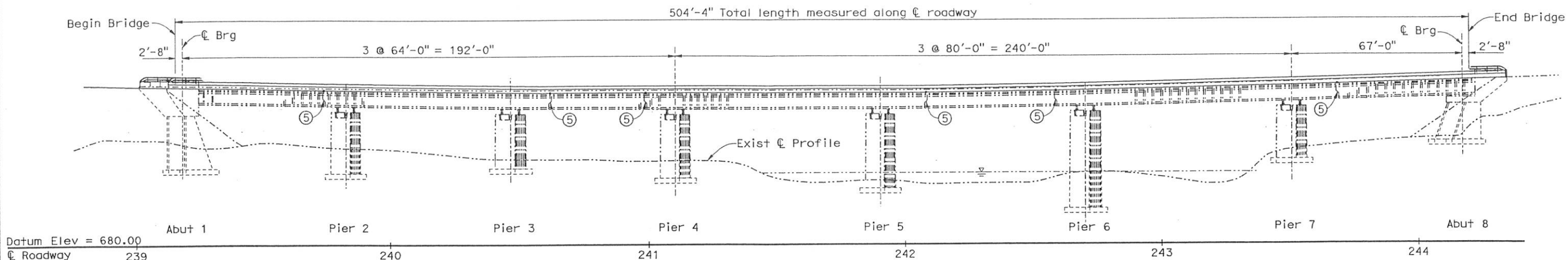
LAYOUT ALTERNATIVE 1
SCALE: 1" = 50'

11-0072.b.21

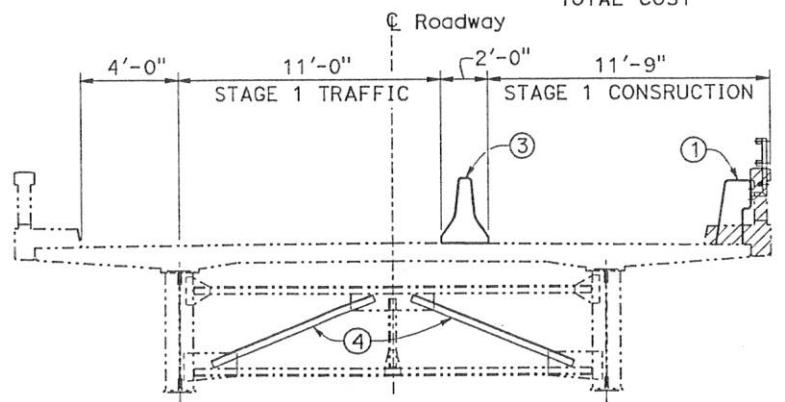
STATE OF CALIFORNIA - DEPARTMENT OF TRANSPORTATION
Caltrans
 ADVANCE PLANNING
 CHAD BAKER
 F. BATATAN
 REVISIONS: (None listed)
 REVISIONS: (None listed)

DIST	COUNTY	ROUTE	POST MILE
03	ED	49	23.99

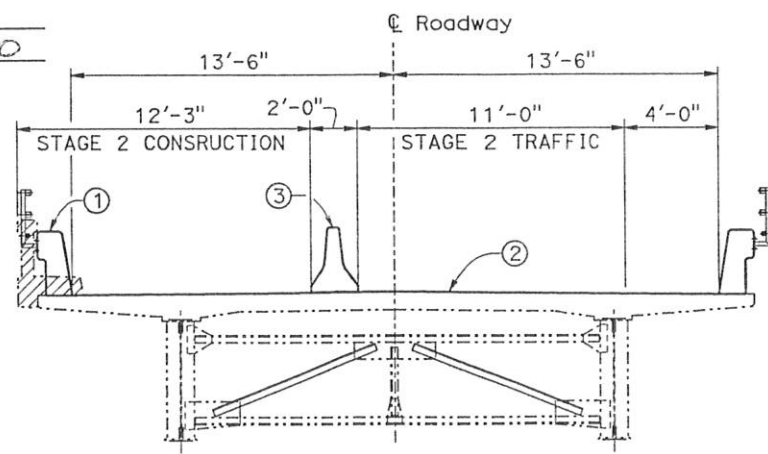
To get to the Caltrans web site, go to: <http://www.dot.ca.gov>



DATE OF ESTIMATE	=	3-3-09 CAK
BRIDGE REMOVAL	=	
STRUCTURE DEPTH	=	N/A
LENGTH	=	504.33
WIDTH	=	8
AREA	=	
COST/ <input checked="" type="checkbox"/> INCLUDING 10% MOBILIZATION & 25% CONTINGENCY	=	
TOTAL COST	=	\$640,000



STAGE 1



STAGE 2

TYPICAL SECTION
1/4" = 1'-0"

Assumptions:

- Scour will not be significant over remaining life of bridge.
- 1 Lane of traffic to remain open except for short periods.
- No trestle work required in the river.

Notes:

- Replace existing barrier rail with Type 732.
- Remove existing AC surfacing, remove and replace unsound concrete and place 3/4" polyester concrete overlay following stage 2.
- Temporary railing Type K
- Strengthen cross frames.
- Add transverse keeper plates to upper flange.

----- Indicates existing
 // // // // Indicates existing to be removed

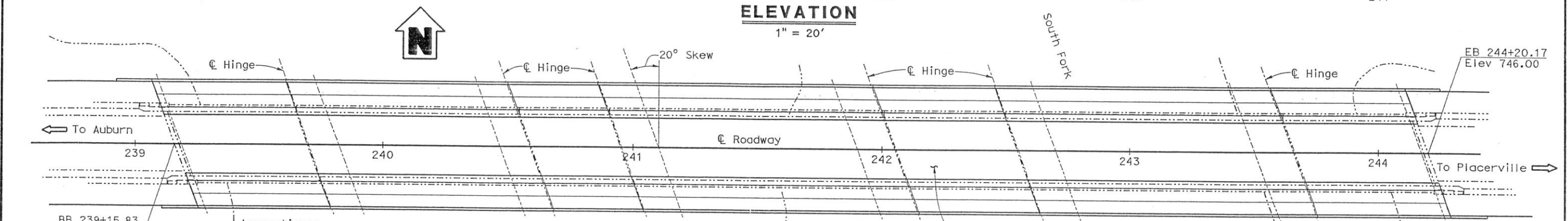
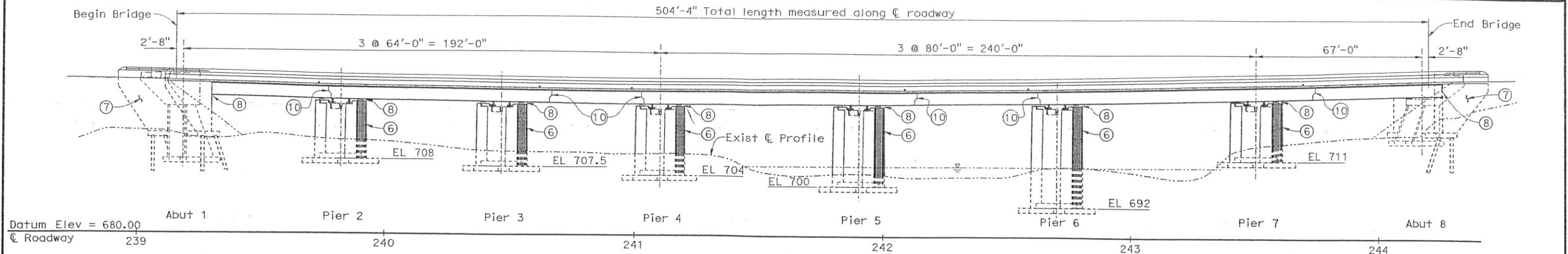
DESIGNED BY	C. Slocum	DATE	1-8-09
DRAWN BY	C. Figuerres	DATE	1-8-09
CHECKED BY		DATE	
APPROVED		DATE	

STRUCTURE DESIGN BRANCH
2

ALTERNATIVE NO. 1	
PLANNING STUDY	
BRIDGE ACROSS SOUTH FORK OF AMERICAN RIVER	
BRIDGE NO. 25-0021	CU 03
SCALE: AS SHOWN	11-0072.D.3

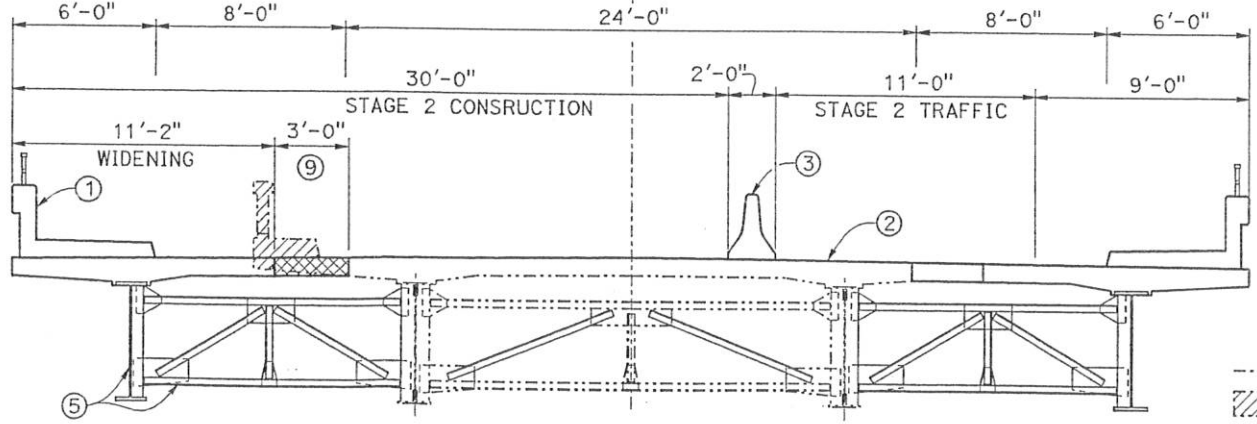
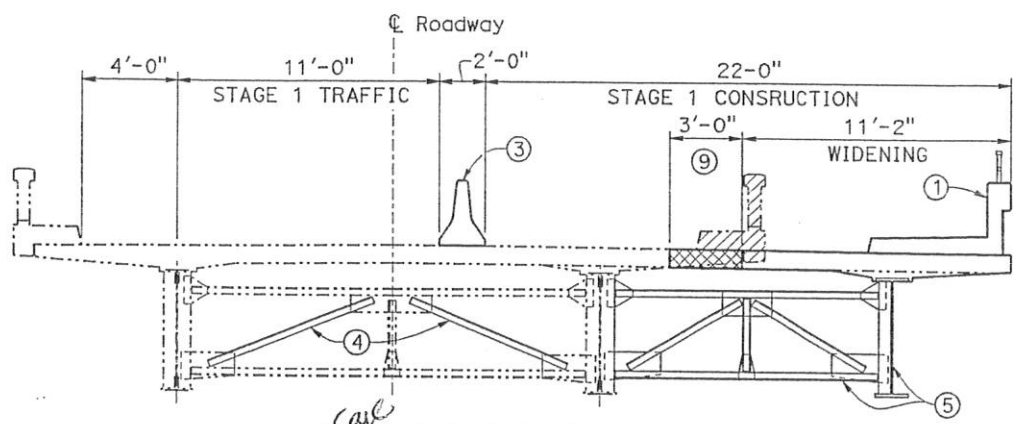
DIST.	COUNTY	ROUTE	POST MILE
03	ED	49	23.99

To get to the Caltrans web site, go to: <http://www.dot.ca.gov>



- Assumptions:**
1. Scour will not be significant over remaining life of bridge.
 2. Allowable soil bearing press = 10 tons/sf.
 3. Existing footing elevation as indicated.
 4. 1 Lane of traffic to remain open except for short periods.
 5. Access trestles required from Pier 4 to Pier 5 and from Pier 7 to Pier 6.

- Notes:**
- 1 Replace existing barrier rail with Type 26
 - 2 Remove existing AC surfacing, remove and replace unsound concrete and place 3/4" polyester concrete overlay following stage 2.
 - 3 Temporary railing Type K.
 - 4 Strengthen cross frames.
 - 5 New plate girders and cross frames.
 - 6 Extend piers on new spread footings.
 - 7 Extend abutments on new pile footings.
 - 8 Replace existing rocker bearings with concrete blocks and elastromic bearings, new girder on elastromic bearing.
 - 9 Closure pour
 - 10 Add transverse keeper plates to upper flange.



TYPICAL SECTION
1/4" = 1'-0"

DATE OF ESTIMATE = 3-10-09 *Case*

BRIDGE REMOVAL =

STRUCTURE DEPTH =

LENGTH = 504.33 lf

WIDTH = 22.33 lf

AREA = 11,262 sf

COST INCLUDING 10% MOBILIZATION & 25% CONTINGENCY = \$6,120,000

TOTAL COST = \$6,893,000

DESIGNED BY G. Slocum	DATE 1-8-09
DRAWN BY C. Figuerres	DATE 1-8-09
CHECKED BY	DATE
APPROVED	DATE

STRUCTURE DESIGN BRANCH
2

ALTERNATIVE NO. 2	
PLANNING STUDY	
BRIDGE ACROSS SOUTH FORK OF AMERICAN RIVER	
BRIDGE NO. 25-0021	CU 03
SCALE: AS SHOWN	14-0072.D.5

TRANSPORTATION PROJECT DELIVERY PROCESS

