



County of El Dorado Safety Element Update

Joint Board of Supervisors and Planning
Commission Workshop – November 14, 2023



Introductions

Project Team

WSP USA Environnement & Infrastructure Inc.

- Juliana Prospero, AICP – Project Manager
- Melissa Baum – Hazard Mitigation Planner

El Dorado County, Planning & Building Department

- Thea Graybill – Project Manager
- Bret Sampson – Planning Manager



Joint Workshop Agenda

1. General Plan Overview
2. County's General Plan Elements
3. Safety Element Overview
4. Safety Element Required Components
5. Update Review Process
6. Changes to State Law
7. Public Outreach and Engagement
8. Plan Integration
9. Implementation Measures
10. Safety Element Topics
11. Summary of Revisions
12. Next Steps
13. Public Draft Review – comments due Friday, December 8



What is a General Plan?



Components of the General Plan



*Required if Disadvantaged Communities are located in the Jurisdiction



Safety Element Overview

- **Goal** is to reduce the potential short and long-term risk of death, injuries, property damage, and economic and social dislocation resulting from wildfires, floods, droughts, earthquakes, landslides, climate change, and other hazards.
- **One of seven mandatory elements** of the County's General Plan.
- **Involves regular updates** to meet State legal mandates.



Safety Element Required Components

- ✓ Goals and Policies
- ✓ Hazard Maps
- ✓ Wildland and Urban Fires
- ✓ Flooding
- ✓ Slope Instability
- ✓ Seismic Risks
- ✓ Climate Change Adaptation and Resilience
- ✓ Implementation Program



Changes to State Law

- **SB 1241:** Wildfire hazards
- **SB 379:** Climate Vulnerability Assessment & adaptation framework
- **AB 747, AB 1409, & SB 99:** evacuation accessibility
- **SB 1035:** integrates the Housing and Safety Elements
- **AB 2140:** financial incentive to jurisdictions that have integrated the LHMP into the Safety Element



Public Outreach & Engagement



- Repository for CVA and Safety Element Update information
- Link to sign up for email updates

Website



- Bi-lingual survey circulated to inform the CVA
- Opportunity to share feedback on climate change and adaptation

Online Survey



- 4 SEAC workshops
- 2 stakeholder workshops
- 3 public workshops
- Numerous one-on-one coordination meetings with key stakeholders

Workshops



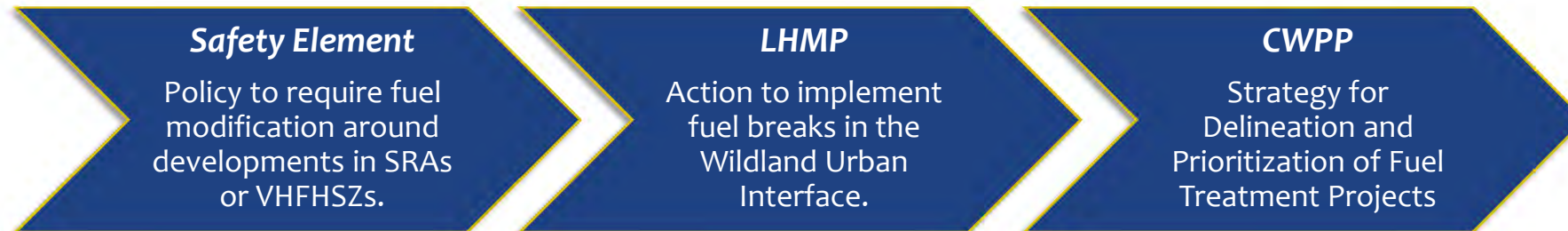
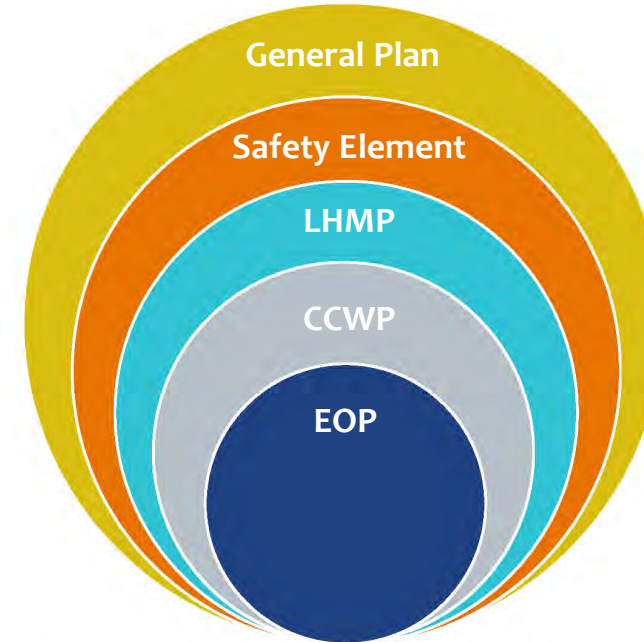
- Press releases about events
- Public notices/flyers
- Announcements for workshops

Social Media



Plan Integration

- Housing Element (2021)
- Safety Element (2023)
 - Climate Vulnerability Assessment
- LHMP (2018, Update Anticipated 2024)
- Community Wildfire Protection Plans
 - West Slope CWPP (2022)
 - Tahoe Basin CWPP (Update 2023-2024)
- Emergency Operations Plan (2022)



Current Safety Element Policies & Implementation Measures

- **27 Fire Safety Policies**
 - 8 Existing Policies
 - 3 Revised Wildfire Policies
 - 16 New Wildfire Policies
- **14 Geologic & Seismic Hazard Policies**
 - 6 Existing Policies
 - 8 New Policies
- **8 Flood Policies**
 - 7 Existing Policies
 - 1 New Policy
- **8 Evacuation Accessibility Policies**
 - 8 New Policies
- **2 Human-Health Hazards Policies**
 - 2 New Policies
- **7 Climate Adaptation and Resiliency Policies**
 - 7 New Climate Adaptation Policies
 - 10 New Drought & Water Supply Policies
 - 4 New Agriculture and Forestry Disease Policies
 - 5 New Extreme Heat Policies
 - 4 New High Wind Policies
 - 3 New Severe Weather Policies
- **35 Implementation Measures**
 - 24 Existing Measures in Progress
 - 11 New Measures



New Safety Element Implementation Measures

- **11 New Implementation Measures**
 - HS-Y: Develop development standards, coordinated emergency notification, and evacuation plans and procedures for development in the WUI, SRA, or very high FHSZ
 - HS-Z: Coordinate climate resiliency efforts
 - HS-AA: Designate facilities to be cooling centers or resilience hubs
 - HS-BB: Promote water conservation
 - HS-CC: Support EDCWA's water resource and drought programs and plans
 - HS-DD: Ensure free or discounted vaccinations
 - HS-EE: Update emergency plans and procedures every 5 years
 - HS-FF: Develop and implement Drought Task Force and Drought Resilience Plan
 - HS-GG: Implement Stormwater Management Plan
 - HS-HH: Analyze environmental impacts when a project is in hazardous location
 - HS-II: Support biomass utilization



Summary of Revisions

- **Existing Health, Safety, and Noise Element**
 - Reflects policy priorities established approximately 20 years ago
- **Proposed Safety Element Update**
 - Complies with statutory requirements
 - Updates existing conditions information
 - Incorporates of a set of climate adaptation policies
 - Identifies County issues, assets, and opportunities
 - Revisits the Countywide vision and guiding principles
 - Evaluates new and revised policy options
 - Engages stakeholders and the community
- **Additional Options**
 - Contemporary, web-based, and user-friendly Safety Element



What will the Safety Element Update Include?

Existing Topics



Geologic and Seismic Hazards



Fire Hazards



Flood Hazards



Highway Safety



Noise



Hazardous Materials



Air Quality



Aviation-Related Hazards

New Topics



Drought



Extreme Heat



Evacuation Accessibility



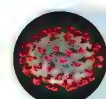
Agricultural and Forestry Pests: Tree Mortality



Severe Weather: High Winds, Thunderstorm/Heavy Rain/Hail/Lightning



Climate Adaptation and Resiliency: Energy Shortages, PSPS



Public Health; Pandemic/Epidemic/Other Health Concerns



What will the Safety Element Update include?

Government Code Section 65302(g)(1)
Protection of the community from unreasonable risk associated with:

- Geologic and Seismic Hazards
 - ✓ Surface Rupture
 - ✓ Ground Shaking
 - ✓ Liquefaction
 - ✓ Ground Failure
 - ✓ Subsidence



What will the Safety Element Update include?

Government Code Section 65302(g)(2)
Protection of the community from unreasonable risk associated with:

- Flooding
- Dam Inundation
- Tsunami/Seiche
- Slope Instability
 - ✓ Landslides
 - ✓ Mudslides
 - ✓ Rock Falls
 - ✓ Debris Flows

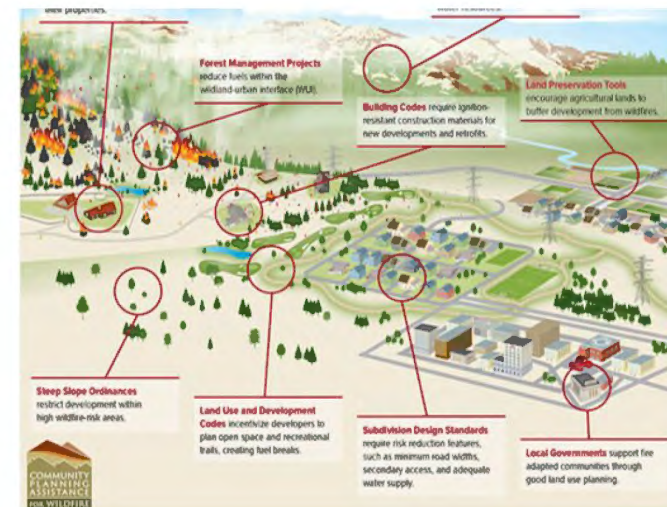
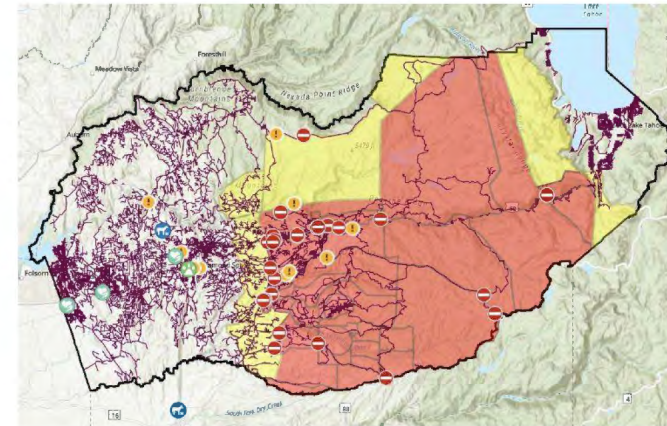


What will the Safety Element Update include?

Government Code Section 65302(g)(3)
protection of the community from unreasonable risk associated with:

- **Wildland and urban fires**

- ✓ SRA Fire Safe Regulations
- ✓ Defensible Space Maintenance
- ✓ Evacuation Standards & Emergency Access
- ✓ Plans to Reach At-Risk Populations
- ✓ Peak Load Water Supply & Fire Flow
- ✓ Fire Breaks
- ✓ Future Emergency Service Needs
- ✓ Inter-Agency Coordination

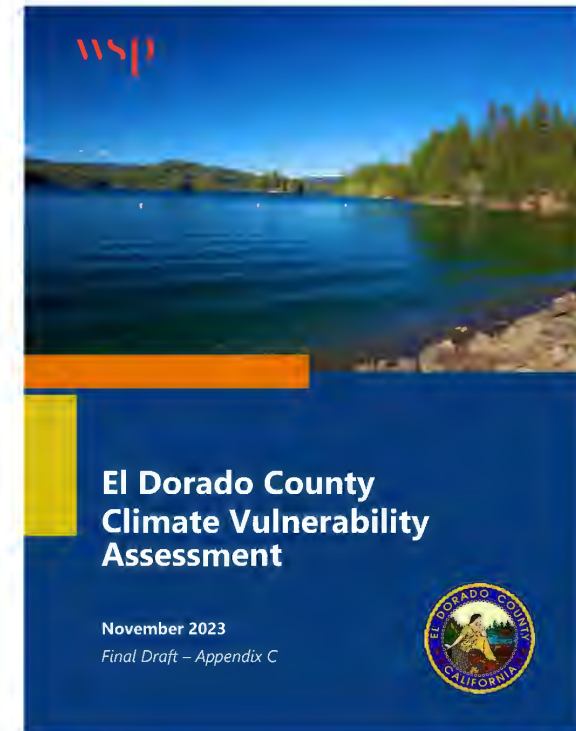


What will the Safety Element Update include?

Government Code Section 65302(g)(4) requires a vulnerability assessment that identifies the risks climate change poses to the local jurisdiction and requires the incorporation of climate adaptation and resiliency strategies:

- **Climate Adaptation Framework**

- ✓ Climate Vulnerability Assessment
- ✓ Update Safety Element to address climate adaptation
- ✓ Develop adaptation and resilience goals, policies, and objectives
- ✓ Develop feasible implementation measures



Next Steps

- Public draft comments due Friday, December 8
- Final public workshop – Tuesday, December 5 at 5:30 p.m.
- Final SEAC workshop in January/February
- CalGS review and approval (45 days prior to BOS approval) – 30 days
- California Board of Forestry and Fire Protection & Local Fire Protection District Review (90 days prior to adoption) – 60 days
- Planning Commission adoption hearing
- Board of Supervisors adoption hearing



Safety Element Update Public Draft Review

Public comments due by Friday, December 8

Submit your written comments to:

Thea Graybill, Senior Planner

Email: thea.graybill@edcgov.us

Address: Planning and Building Department, Long Range Planning
2850 Fairlane Court, Building C, Placerville, CA 95667

Subscribe to the Safety Element Update email listserv at:

<https://www.edcgov.us/Government/longrangeplanning/Pages/General-Plan-Safety-Element-Update.aspx>

