

COMMUNITY HUB 1

Located in El Dorado County Supervisorial District 1 including El Dorado Hills.

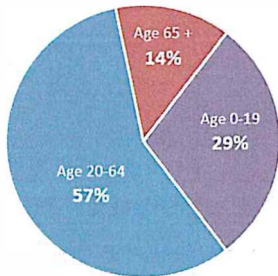
COMMUNITY PROFILE

The Public Health Nursing Community Needs Assessment identifies challenges for Hub 1 families including behavioral, mental health, and dental disease risks, health disparities, inadequate nutrition, and the need for family supports. The Community Hub Profile Report builds upon these findings offering service priority considerations.

SERVICE PRIORITIES

The service priorities in Hub 1 are to concentrate outreach efforts to low-income families, connect with at-risk youth and adolescents and connect with families who identify as Hispanic and Asian/Pacific Islander. Strategies to consider include preventative education, teen engagement and recreation, parenting education, mobile dental services and nutrition supports.

DEMOGRAPHICS



There are 39,658 people in Hub 1.

- Of the 11,624 children ages 0-19, 22% are 15-19, 32% are 10-14, 29% are 5-9 and 17% are under the age of 5.
- 82% of people are White, 2% Black, <1% American Indian, 10% Asian/Pacific Islander and 5% Multiracial. Of the total, 9% identify as Hispanic or Latino.
- 16% of families speak a language other than English.

FAMILIES

Of the 12,940 households in Hub 1, 5,400 (42%) have children 0-18.

- The average family size is 2.99.
- Of the 342 grandparents living with their own grandchildren, 16% of those are responsible for their care.



ECONOMICS



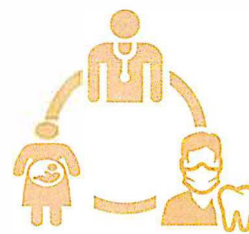
The median family income in Hub 1 is \$133,016.

- The average unemployment rate for individuals within Community Hub 1 is 8%.
- 2% of families live in poverty, while 3% of children live in poverty.

HEALTH

96% of Hub 1 residents have Health Insurance Coverage.

- 90% (or 35,665) of those with coverage hold private health insurance
- 18% (or 7,222) have public health insurance coverage
- 4% (or 1,438) of the population have no health insurance, 72 of which are under the age of 6, and 131 are ages 6-17.
- A total of 2,615 people within the Community Hub 1 service population have a disability, of which 218 are under age 18.



EDUCATION



96% of Hub 1 residents are high school graduates or higher.

- 52% (or 13,511) have a bachelor's degree or higher.
- The majority of young children (1,130) are cared for by family, friends or neighbors, exempt from licensing.
- There are 13 licensed child care centers serving 1,001 children and 16 licensed child care homes serving 162 children.

IMPORTANCE OF RESILIENCE

Positive interactions are the foundation for healthy brain development at any age. When children are exposed to prolonged and frequent (toxic) stress responses, and lack caring relationships, their brain development can be damaged. Resilient families are better prepared to address toxic stress and are essential to healthy communities.

In the absence of a caring relationship, toxic stress can disrupt healthy brain development. Research tells us the higher number of adverse childhood experiences (ACEs) resulting from toxic stress impacts health outcomes. People with high ACE scores are more likely to be violent, to have more divorces, more broken bones, more drug prescriptions, more depression, and more autoimmune diseases. Currently, El Dorado County exceeds the state in the number of domestic violence calls for assistance per 100,000 adults (685.7/415.6), substance affected still or live born infants per 1,000 (45.4/23.4) and mental health diagnoses in pregnancy (129.7/48.5).

Building family relationships is essential to healthy communities. Community Hub Teams have been established to empower families to address stressors before they become toxic.

HUBS BUILD RESILIENCE

Each Hub has a team that includes an Early Childhood Literacy Specialist, Family Engagement Specialist, Community Health Advocate and Public Health Nurse with the common goal to increase resiliency in families. Each Hub offers activities focused on early literacy and reading, child development and parenting, and preventative health services, all at no cost to the families.

CONNECT WITH HUBS

The best way to request services from the Hub team is to call or visit them at the library. To find your team member or for more information about Community Hubs, visit

<https://www.first5eldorado.com/community-hubs>.



COMMUNITY HUB 1

EDC Library

Early Childhood Literacy Specialist

EDC Health and Human Services

Public Health Nurse

EDC Health and Human Services

Community Health Advocate

EDC Office of Education

Family Engagement Specialist

Hub 1 includes the mid-western most area of the county surrounding El Dorado Hills whose residents are diverse, working families. The Public Health Nursing Community Needs Assessment indicates opportunities to promote healthy family practices including work/life balance, managing family stress, decreasing screen time, and increasing knowledge of parenting and child development. The Community Hub teams are working to address these issues and better serve families by linking them to community resources.

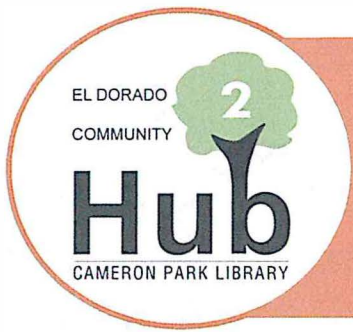
IMPACT ON FAMILIES

How did this affect families?

Encouraging social connections with bilingual staff reduces isolation and increases family resiliency.

Last fall, the teams offered bilingual Raising Readers Storytimes at Green Valley School, reaching parents and caregivers in neighborhoods furthest from their Hub. One Hispanic mother began attending the fall sessions with her child. Over time, she invited her friends to join the storytimes, learning parenting and literacy tips each week. This family is “now fully connected to her local library Hub, attending every program,” increasing social connections, and strengthening bonds with other community members.

Another parent who attended the library Hub Storytime approached the Family Engagement Specialist after completing an Ages and Stages Developmental Questionnaire. While sharing some behavioral concerns about her child, she revealed some signs of post-partum depression. A referral was made to the Public Health Nurse, referring the family to the Infant Parent Center for support. The Hub connections gave her the positive outlook she needed and reinforced that “the library is a safe place” for her child and family.



COMMUNITY HUB 2

Located in El Dorado County Supervisorial District 2 including the communities of Cameron Park, Fairplay, Grizzly Flats, Latrobe, Mt. Aukum, Outingdale, Pleasant Valley and Somerset.

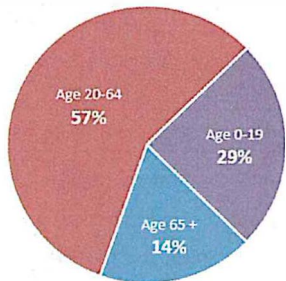
COMMUNITY PROFILE

The Public Health Nursing Community Needs Assessment identifies challenges for Hub 2 families including behavioral and dental disease risks, increased health risks amongst Latino families, inadequate nutrition, and the need for life skills and family supports. The Community Hub Profile Report builds upon these findings offering service priority considerations.

SERVICE PRIORITIES

The service priorities in Hub 2 are to concentrate outreach efforts to low-income families, connect with at-risk youth and adolescents, connect with families who identify as Hispanic and reach out to families who have children with disabilities. Strategies to consider include preventative education, teen engagement, parenting, mobile dental services, supports for grandparents raising grandchildren, nutrition, employment development, services for children with disabilities or other special needs, and early care and education services for children not enrolled in preschool.

DEMOGRAPHICS



There are 36,809 people in Hub 2.

- Of the 9,021 children ages 0-19, 33% are 15-19, 28% are 10-14, 20% are 5-9 and 19% are under the age of 5.
- 90% of people are White, 1% Black, 1% American Indian, 3% Asian/Pacific Islander and 4% Multiracial. Of the total, 11% identify as Hispanic or Latino.
- 7% of families speak a language other than English.

FAMILIES

Of the 14,147 households in Hub 2, 3,929 (28%) have children 0-18.

- The average family size is 2.94.
- Of the 414 grandparents living with their own grandchildren, over a third (35%) of those are responsible for their care.



ECONOMICS



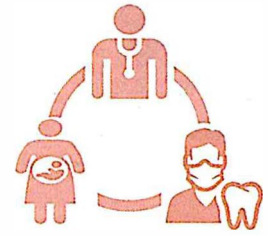
The median family income in Hub 2 is \$86,521.

- The average unemployment rate for individuals within Community Hub 2 is 12%.
- 9% of families live in poverty, while 17% of children live in poverty.

HEALTH

91% of Hub 2 residents have Health Insurance Coverage.

- 75% (or 27,435) of those with coverage hold private health insurance
- 33% (or 12,242) have public health insurance coverage
- 9% (or 3,363) of the population have no health insurance, 279 of which are under the age of 6, and 83 are ages 6-17.
- A total of 4,771 people within the Community Hub 2 service population have a disability, of which 383 are under age 18.



EDUCATION



93% of Hub 2 residents are high school graduates or higher.

- 31% (or 7,931) have a bachelor's degree or higher.
- There is insufficient ECE capacity, 945 slots for 1,708 children ages 0-5.
- There are 10 licensed child care centers serving 383 children and 20 licensed child care homes serving 152 children.

IMPORTANCE OF RESILIENCE

Positive interactions are the foundation for healthy brain development at any age. When children are exposed to prolonged and frequent (toxic) stress responses, and lack caring relationships, their brain development can be damaged. Resilient families are better prepared to address toxic stress and are essential to healthy communities.

In the absence of a caring relationship, toxic stress can disrupt healthy brain development. Research tells us the higher number of adverse childhood experiences (ACEs) resulting from toxic stress impacts health outcomes. People with high ACE scores are more likely to be violent, to have more divorces, more broken bones, more drug prescriptions, more depression, and more autoimmune diseases. Currently, El Dorado County exceeds the state in the number of domestic violence calls for assistance per 100,000 adults (685.7/415.6), substance affected still or live born infants per 1,000 (45.4/23.4) and mental health diagnoses in pregnancy (129.7/48.5).

Building family relationships is essential to healthy communities. Community Hub Teams have been established to empower families to address stressors before they become toxic.

HUBS BUILD RESILIENCE

Each Hub has a team that includes an Early Childhood Literacy Specialist, Family Engagement Specialist, Community Health Advocate and Public Health Nurse with the common goal to increase resiliency in families. Each Hub offers activities focused on early literacy and reading, child development and parenting, and preventative health services, all at no cost to the families.

CONNECT WITH HUBS

The best way to request services from the Hub team is to call or visit them at the library. To find your team member or for more information about Community Hubs, visit

<https://www.first5eldorado.com/community-hubs>.

Community Hubs are a partnership between First 5 El Dorado • EDC Library • EDC Early Care and Education Planning Council • EDC Child Abuse Prevention Council • EDC Health and Human Services Agency's Maternal Child and Adolescent Health Program and Mental Health Services Act.



COMMUNITY HUB 2

EDC Library

Early Childhood Literacy Specialist

EDC Health and Human Services

Public Health Nurse

EDC Health and Human Services

Community Health Advocate

EDC Office of Education

Family Engagement Specialist

IMPACT ON FAMILIES

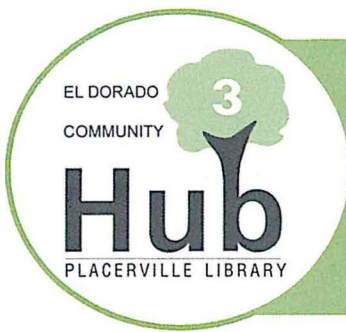
How did this affect families?

Connecting families with health insurance and medical homes increase well-child visits.

Hub 2 includes the neighboring south-western county communities from Cameron Park to Grizzly Flats. In this rural region, families have limited access to health and dental services resulting in reduced well child visits and increased emergency room visits. The Hub Health Staff are reaching out to families to increase access to these services.

“One family of nine was referred to the Hub ... to establish a medical and dental home and transfer Alta in-home services. After several months of care coordination all family members had a Medi-Cal provider. Two children were seen by a vision provider and both had prescription glasses covered by insurance. The Alta in-home services resumed.”

These connections were made possible by the Public Health Nurse and Community Health Advocate who are available for families to assist with getting insurance, finding doctors, and attending well child visits. Accessing primary care doctors and dentists for regular wellness visits is critical in keeping all family members healthy.



COMMUNITY HUB 3

Located in El Dorado County Supervisorial District 3
Including the communities of Camino, Diamond Springs,
El Dorado and Placerville

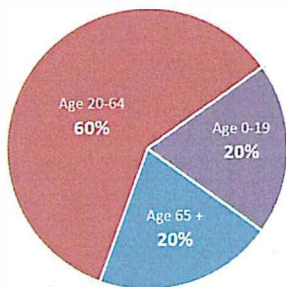
COMMUNITY PROFILE

The Public Health Nursing Community Needs Assessment identifies challenges for Hub 3 families including substance abuse and mental health risks, health disparities, inadequate nutrition, risk for homelessness, the need for life skills and family supports, and increased health risks for Latino families. The Community Hub Profile Report builds upon these findings offering service priority considerations.

SERVICE PRIORITIES

The service priorities in Hub 3 are to concentrate outreach efforts to low-income families, connect with at-risk youth and adolescents, connect with families who identify as Hispanic, families who have children with disabilities, and advertise availability of healthcare supports. Strategies to consider include preventative education, teen engagement, parenting, supports for grandparents raising grandchildren, nutrition, employment development, services for children with disabilities or other special needs, and educational guidance and supports.

DEMOGRAPHICS



There are 30,597 people in Hub 3.

- Of the 6,022 children ages 0-19, 27% are 15-19, 22% are 10-14, 28% are 5-9 and 23% are under the age of 5.
- 90% of people are White, <1% Black, 2% American Indian, 1% Asian/Pacific Islander and 3% Multiracial. Of the total, 11% identify as Hispanic or Latino.
- 9% of families speak a language other than English.

FAMILIES

Of the 12,282 households in Hub 3, 2,649 (22%) have children 0-18.

- The average family size is 2.88.
- Of the 359 grandparents living with their own grandchildren, 35% of those are responsible for their care.



ECONOMICS



The median family income in Hub 1 is \$74,701.

- The average unemployment rate for individuals within Community Hub 3 is 14%.
- 7% of families live in poverty, while 15% of children live in poverty.

HEALTH

90% of Hub 3 residents have Health Insurance Coverage.

- 67% (or 20,006) of those with coverage hold private health insurance.
- 40% (or 12,107) have public health insurance coverage.
- 10% (or 2,865) of the population have no health insurance, 12 of which are under the age of 6, and 149 are ages 6-17.
- A total of 4,913 people within the Community Hub 3 service population have a disability, of which 200 are under age 18.



EDUCATION



91% of Hub 3 residents are high school graduates or higher.

- 23% (or 5,214) have a bachelor's degree or higher.
- There is sufficient ECE capacity with 1,491 slots for 1,375 children ages 0-5.
- There are 13 licensed child care centers serving 672 children and 18 licensed child care homes serving 154 children.

IMPORTANCE OF RESILIENCE

Positive interactions are the foundation for healthy brain development at any age. When children are exposed to prolonged and frequent (toxic) stress responses, and lack caring relationships, their brain development can be damaged. Resilient families are better prepared to address toxic stress and are essential to healthy communities.

In the absence of a caring relationship, toxic stress can disrupt healthy brain development. Research tells us the higher number of adverse childhood experiences (ACEs) resulting from toxic stress impacts health outcomes. People with high ACE scores are more likely to be violent, to have more divorces, more broken bones, more drug prescriptions, more depression, and more autoimmune diseases. Currently, El Dorado County exceeds the state in the number of domestic violence calls for assistance per 100,000 adults (685.7/415.6), substance affected still or live born infants per 1,000 (45.4/23.4) and mental health diagnoses in pregnancy (129.7/48.5).

Building family relationships is essential to healthy communities. Community Hub Teams have been established to empower families to address stressors before they become toxic.

HUBS BUILD RESILIENCE

Each Hub has a team that includes an Early Childhood Literacy Specialist, Family Engagement Specialist, Community Health Advocate and Public Health Nurse with the common goal to increase resiliency in families. Each Hub offers activities focused on early literacy and reading, child development and parenting, and preventative health services, all at no cost to the families.

CONNECT WITH HUBS

The best way to request services from the Hub team is to call or visit them at the library. To find your team member or for more information about Community Hubs, visit

<https://www.first5eldorado.com/community-hubs>.

Community Hubs are a partnership between First 5 El Dorado • EDC Library • EDC Early Care and Education Planning Council • EDC Child Abuse Prevention Council • EDC Health and Human Services Agency's Maternal Child and Adolescent Health Program and Mental Health Services Act.



COMMUNITY HUB 3

EDC Library

Early Childhood Literacy Specialist

EDC Health and Human Services

Public Health Nurse

EDC Health and Human Services

Community Health Advocate

EDC Office of Education

Family Engagement Specialist

IMPACT ON FAMILIES

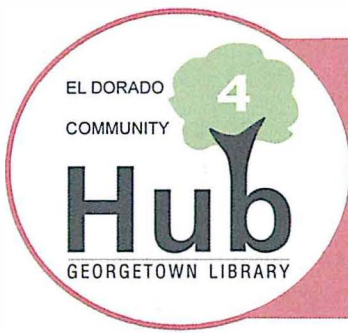
How did this affect families?

Providing families concrete support in times of need enhances parental resilience.

Hub 3 includes the mid-western county communities of and around Placerville. According to the Public Health Nursing Community Needs Assessment, these communities struggle with housing and employment. The Placerville library Hub is a place where families can go to seek economic, social, and academic literacy.

“There was a family who lost their home, restaurant business, and financial security due to a natural disaster and moved in with relatives in Placerville. Another local family suggested they attend a Storytime at the library for the family to have a social activity and to meet others.” The family attended the Storytime event, and found so much more than just an interactive activity to do with their child. They were connected to Cal Fresh, Medi-Cal, HeadStart, Green Valley Church for food and clothing, WIC, housing services and Cal Works for employment opportunities. The family went from crisis to having a safety net of services.

Hubs provide a network of connections between community-based organizations and Hub Teams offering opportunities for families to create more stable environments.



COMMUNITY HUB 4

Located in El Dorado County Supervisorial District 4 including the communities of Coloma, Cool, Garden Valley, Georgetown, Kelsey, Pilot Hill, Rescue and Shingle Springs

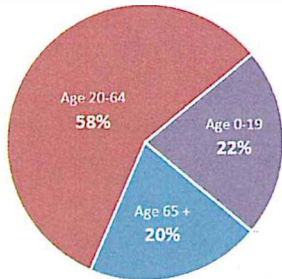
COMMUNITY PROFILE

The Public Health Nursing Community Needs Assessment identifies challenges for Hub 4 families including risk of substance abuse, mental health, safety, health disparities, dental disease and homelessness, inadequate nutrition, and the need for life skills and family supports. The Community Hub Profile Report builds upon these findings offering service priority considerations.

SERVICE PRIORITIES

The service priorities in Hub 4 are to concentrate outreach efforts to low-income families, connect with at-risk youth and adolescents, and reach out to families who have children with disabilities. Strategies to consider include preventative education, teen engagement, parenting, mobile dental services, supports for grandparents raising grandchildren, nutrition, employment development, services for children with disabilities or other special needs, and early care and education services for children not enrolled in preschool.

DEMOGRAPHICS



There are 40,718 people in Hub 4.

- Of the 8,964 children ages 0-19, 30% are 15-19, 30% are 10-14, 24% are 5-9 and 16% are under the age of 5.
- 93% of people are White, <1% Black, 1% American Indian, 2% Asian/Pacific Islander and 4% Multiracial. Of the total, 8% identify as Hispanic or Latino.
- 8% of families speak a language other than English.

FAMILIES

Of the 15,905 households in Hub 4, 4,143 (26%) have children 0-18.

- The average family size is 2.92.
- Of the 472 grandparents living with their own grandchildren, over a third (35%) of those are responsible for their care.



ECONOMICS



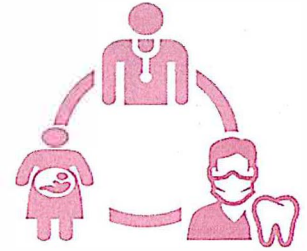
The median family income in Hub 4 is \$87,057.

- The average unemployment rate for individuals within Community Hub 4 is 10%.
- 5% of families live in poverty, while 14% of children live in poverty.

HEALTH

92% of Hub 4 residents have Health Insurance Coverage.

- 76% (or 30,988) of those with coverage hold private health insurance.
- 34% (or 13,717) have public health insurance coverage.
- 8% (or 3,185) of the population have no health insurance, 13 of which are under the age of 6, and 271 are ages 6-17.
- A total of 5,454 people within the Community Hub 4 service population have a disability, of which 281 are under age 18.



EDUCATION



94% of Hub 4 residents are high school graduates or higher.

- 29% (or 8,653) have a bachelor's degree or higher.
- There is insufficient ECE capacity 1,115 slots for 1,416 children ages 0-5.
- There are 10 licensed child care centers serving 287 children and 10 licensed child care homes serving 88 children.

IMPORTANCE OF RESILIENCE

Positive interactions are the foundation for healthy brain development at any age. When children are exposed to prolonged and frequent (toxic) stress responses, and lack caring relationships, their brain development can be damaged. Resilient families are better prepared to address toxic stress and are essential to healthy communities.

In the absence of a caring relationship, toxic stress can disrupt healthy brain development. Research tells us the higher number of adverse childhood experiences (ACEs) resulting from toxic stress impacts health outcomes. People with high ACE scores are more likely to be violent, to have more divorces, more broken bones, more drug prescriptions, more depression, and more autoimmune diseases. Currently, El Dorado County exceeds the state in the number of domestic violence calls for assistance per 100,000 adults (685.7/415.6), substance affected still or live born infants per 1,000 (45.4/23.4) and mental health diagnoses in pregnancy (129.7/48.5).

Building family relationships is essential to healthy communities. Community Hub Teams have been established to empower families to address stressors before they become toxic.

HUBS BUILD RESILIENCE

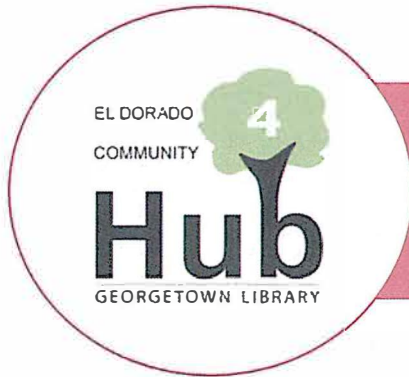
Each Hub has a team that includes an Early Childhood Literacy Specialist, Family Engagement Specialist, Community Health Advocate and Public Health Nurse with the common goal to increase resiliency in families. Each Hub offers activities focused on early literacy and reading, child development and parenting, and preventative health services, all at no cost to the families.

CONNECT WITH HUBS

The best way to request services from the Hub team is to call or visit them at the library. To find your team member or for more information about Community Hubs, visit

<https://www.first5eldorado.com/community-hubs>.

Community Hubs are a partnership between First 5 El Dorado • EDC Library • EDC Early Care and Education Planning Council • EDC Child Abuse Prevention Council • EDC Health and Human Services Agency's Maternal Child and Adolescent Health Program and Mental Health Services Act.



COMMUNITY HUB 4

EDC Library

Early Childhood Literacy Specialist

EDC Health and Human Services

Public Health Nurse

EDC Health and Human Services

Community Health Advocate

EDC Office of Education

Family Engagement Specialist

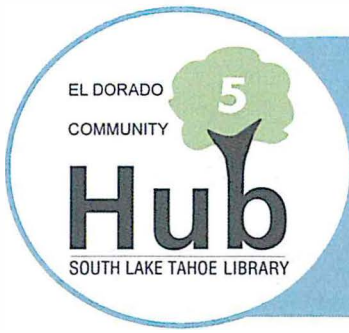
IMPACT ON FAMILIES

How did the Hub help the family?

Building and reinforcing the importance of positive relationships helps families manage stress.

Hub 4 includes the north western county communities from Volcanoville through Rescue. Families in these rural communities are often isolated reducing access to health services, transportation and educational supports. The staff in Hub 4 understand the isolated nature of the region and reach families where they are.

“One family was met by the Community Health Advocate (CHA) during an outreach effort that connects individuals to health services. This family had been without food for several days and was seeking resources. The CHA worked with the family to get immediate food supplies, apply for food stamps and obtain relief with utilities. The child was also in dental crisis and they were able to get an appointment with the Community Health Clinic the following day. Continued contact revealed the family needed support for mental health services and parenting assistance so the Family Engagement Specialist and Public Health Nurse worked together to reinforce connections. The family continues to regularly visit the library” to navigate services and develop relationships needed in raising strong families.



COMMUNITY HUB 5

Located in El Dorado County Supervisorial District 5 including the communities of Kyburz, Meyers, Pollock Pines, South Lake Tahoe, Strawberry, and Tahoma.

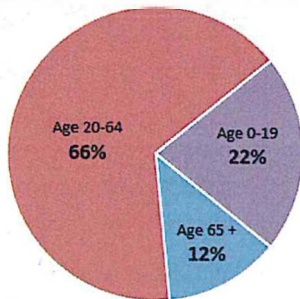
COMMUNITY PROFILE

The Public Health Nursing Community Needs Assessment identifies challenges for Hub 5 families including risks for health disparities, dental disease, and mental health, increased health risks for Latino families, and increased risk of substance abuse among pregnant females. The Community Hub Profile Report builds upon these findings offering service priority considerations.

SERVICE PRIORITIES

The service priorities in Hub 5 are to concentrate outreach efforts to low-income families, connect with at-risk youth and adolescents, connect with families who identify as Hispanic, and focus outreach messages about availability of healthcare access and navigation support. Strategies to consider include preventative education, teen engagement, parenting, mobile dental services, nutrition, employment development, educational guidance and supports, and early care and education services for children not enrolled in preschool.

DEMOGRAPHICS



There are 34,311 people in Hub 5.

- Of the 7,436 children ages 0-19, 27% are 15-19, 21% are 10-14, 26% are 5-9 and 26% are under the age of 5.
- 80% of people are White, 1% Black, <1% American Indian, 5% Asian/Pacific Islander and 3% Multiracial. Of the total, 24% identify as Hispanic or Latino.
- 22% of families speak a language other than English.

FAMILIES

Of the 14,949 households in Hub 5, 3,627 (24%) have children 0-18.

- The average family size is 2.66.
- Of the 382 grandparents living with their own grandchildren, 16% of those are responsible for their care.



ECONOMICS



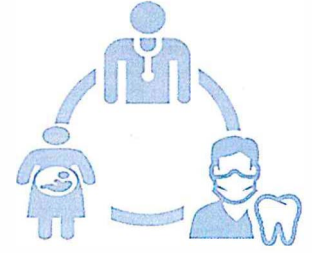
The median family income in Hub 5 is \$58,754.

- The average unemployment rate for individuals within Community Hub 5 is 12%.
- 9% of families live in poverty, while 21% of children live in poverty.

HEALTH

85% of Hub 5 residents have Health Insurance Coverage.

- 62% (or 21,264) of those with coverage hold private health insurance.
- 34% (or 11,707) have public health insurance coverage.
- 15% (or 5,187) of the population have no health insurance, 54 of which are under the age of 6, and 257 are ages 6-17.
- A total of 4,913 people within the Community Hub 5 service population have a disability, of which 147 are under age 18.



EDUCATION



88% of Hub 5 residents are high school graduates or higher.

- 25% (or 6,042) have a bachelor's degree or higher.
- There is insufficient ECE capacity, 1,454 slots for 1,903 children ages 0-5.
- There are 17 licensed child care centers serving 738 children and 20 licensed child care homes serving 206 children.

IMPORTANCE OF RESILIENCE

Positive interactions are the foundation for healthy brain development at any age. When children are exposed to prolonged and frequent (toxic) stress responses, and lack caring relationships, their brain development can be damaged. Resilient families are better prepared to address toxic stress and are essential to healthy communities.

In the absence of a caring relationship, toxic stress can disrupt healthy brain development. Research tells us the higher number of adverse childhood experiences (ACEs) resulting from toxic stress impacts health outcomes. People with high ACE scores are more likely to be violent, to have more divorces, more broken bones, more drug prescriptions, more depression, and more autoimmune diseases. Currently, El Dorado County exceeds the state in the number of domestic violence calls for assistance per 100,000 adults (685.7/415.6), substance affected still or live born infants per 1,000 (45.4/23.4) and mental health diagnoses in pregnancy (129.7/48.5).

Building family relationships is essential to healthy communities. Community Hub Teams have been established to empower families to address stressors before they become toxic.

HUBS BUILD RESILIENCE

Each Hub has a team that includes an Early Childhood Literacy Specialist, Family Engagement Specialist, Community Health Advocate and Public Health Nurse with the common goal to increase resiliency in families. Each Hub offers activities focused on early literacy and reading, child development and parenting, and preventative health services, all at no cost to the families.

CONNECT WITH HUBS

The best way to request services from the Hub team is to call or visit them at the library. To find your team member or for more information about Community Hubs, visit

<https://www.first5eldorado.com/community-hubs>.

Community Hubs are a partnership between First 5 El Dorado • EDC Library • EDC Early Care and Education Planning Council • EDC Child Abuse Prevention Council • EDC Health and Human Services Agency's Maternal Child and Adolescent Health Program and Mental Health Services Act.



COMMUNITY HUB 5

EDC Library

Early Childhood Literacy Specialist

EDC Health and Human Services

Public Health Nurse

EDC Health and Human Services

Community Health Advocate

EDC Office of Education

Family Engagement Specialist

IMPACT ON FAMILIES

How did the Hub help the family?

Bilingual staff are developing positive relationships, building upon families' strengths, and developing community partnerships.

Hub 5 includes the eastern county communities through the highway 50 corridor from Pollock Pines to South Lake Tahoe. Hub 5 is another rural district with limited access to healthcare complicated by transportation barriers. The South Lake Tahoe Library Hub has recently been renovated and is a hotspot for local residents to convene.

The Hub staff are available on site and offer opportunities to connect with families. "A parent with children ages 4-16 came into the library looking for housing services, they were homeless living in a tent. The library staff connected them with the Family Engagement Specialist who helped enroll the three children in school. They got in touch with Live Violence Free, the Family Resource Center, and Choices for Children for food, warm winter clothing and other housing resources. The husband found a job and they are now living in a trailer" and working to build upon their strengths.

The partnerships between the Community Hub and community-based organizations help to reinforce stability in stressful conditions and offers opportunities for families to nurture positive relationships necessary to grow healthy children.