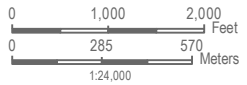
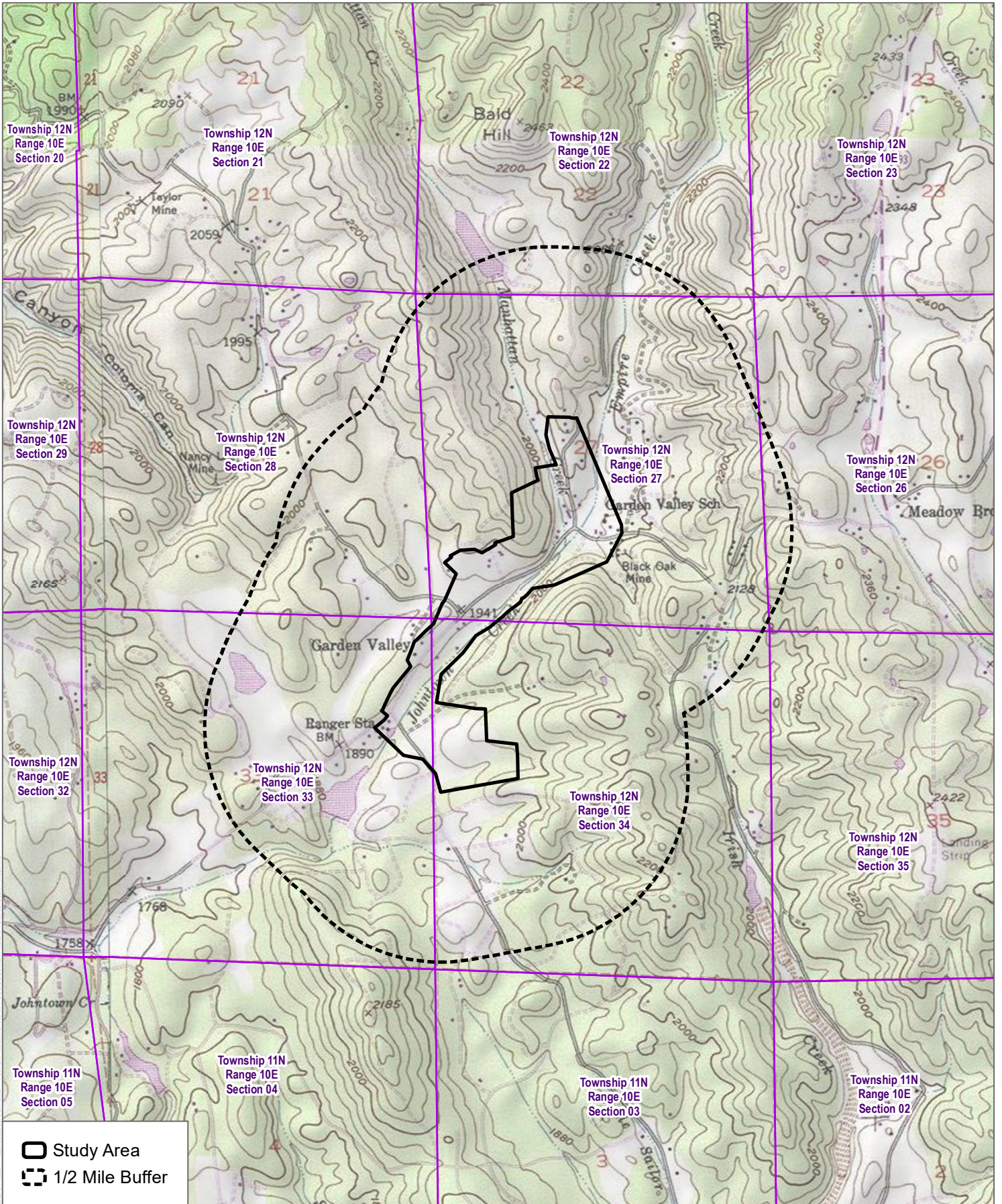


SOURCE: USGS 7.5-Minute Series Auburn, Greenwood, Georgetown, Garden Valley Quadrangles
 Township 12N; Range 10E, 9E, 8E; Sections 1, 2, 3, 4, 5, 6, 7, 8, 9, 10, 11, 12, 13, 14, 15, 16, 17, 18, 19, 20, 22, 24, 26, 27, 28, 33, 34

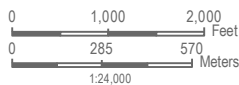


COOL
 Records Search
 Fiber Optic Alignments

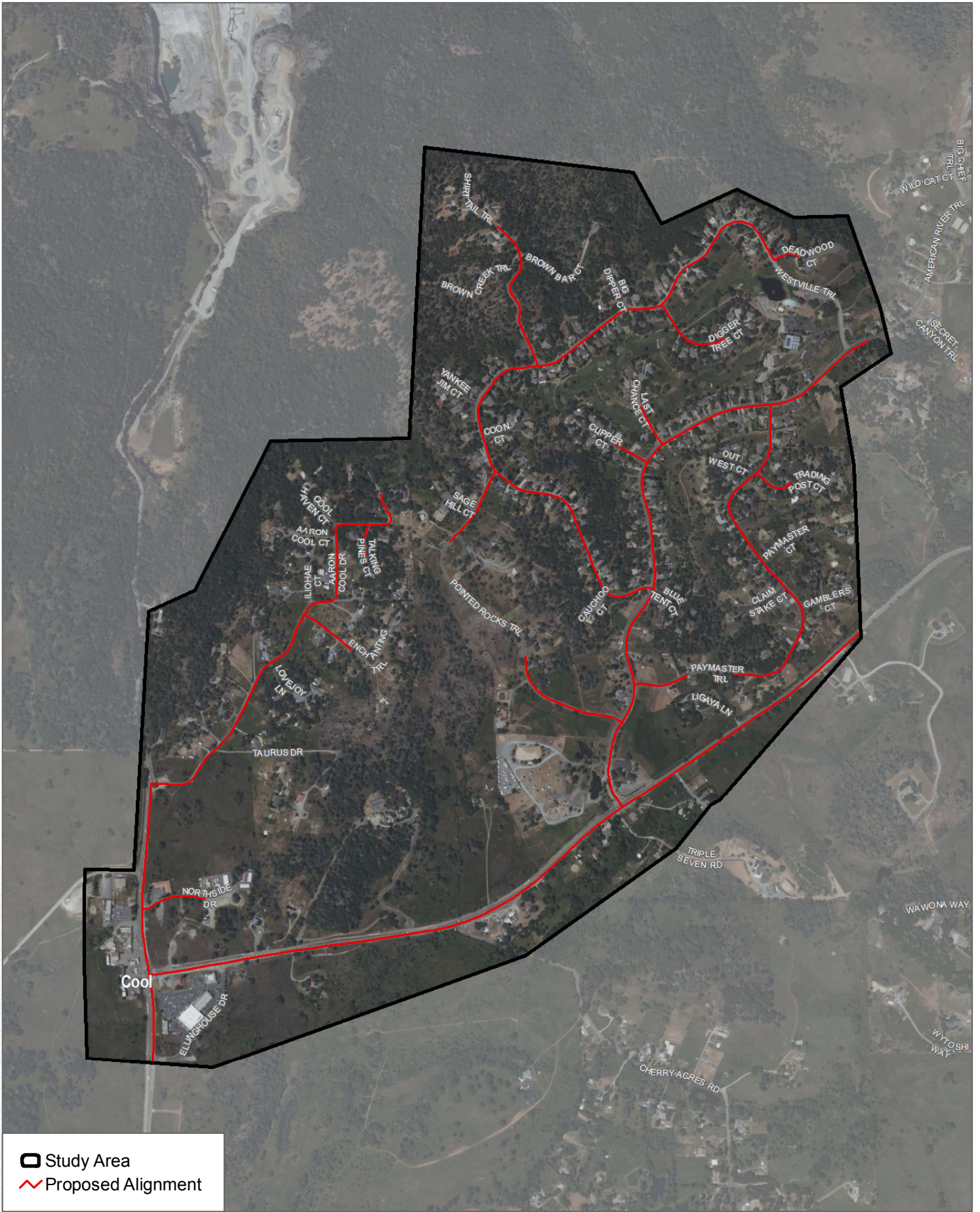


SOURCE: USGS 7.5-Minute Series Auburn, Greenwood, Georgetown, Garden Valley Quadrangles
 Township 12N; Range 10E, 9E, 8E; Sections 1, 2, 3, 4, 5, 6, 7, 8, 9, 9, 10, 11, 12, 13, 14, 15, 16, 17, 18, 19, 20, 22, 24, 26, 27, 28, 33, 34

DUDEK



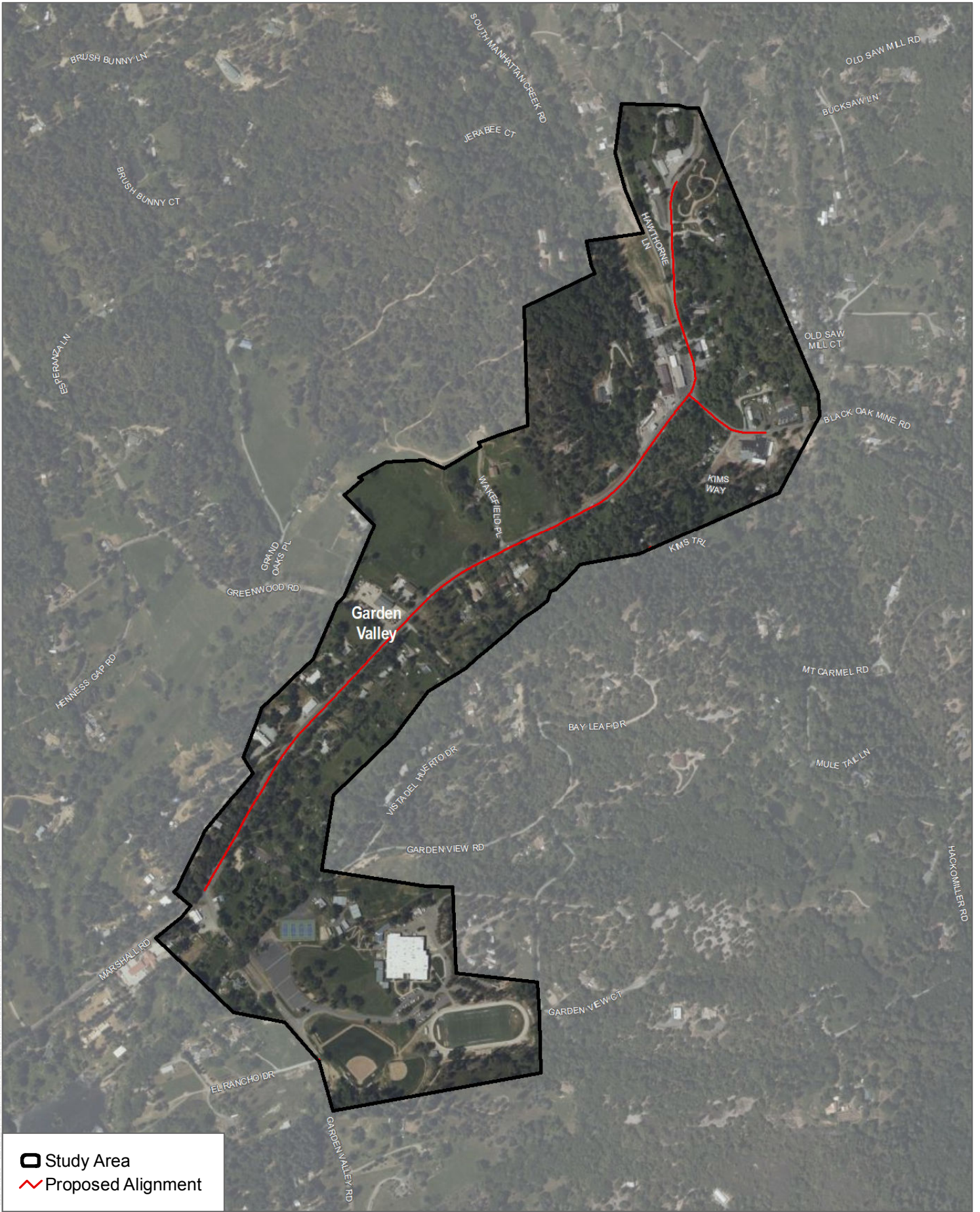
GARDEN VALLEY
Records Search
 Fiber Optic Alignments



SOURCE: El Dorado County 2018, Bing Maps 2022



FIGURE 2A
Proposed Alignment
 El Dorado Fiber Optics



Study Area
 Proposed Alignment

SOURCE: El Dorado County 2018, Bing Maps 2022

DUDEK

0
370
740
Feet

FIGURE 2B
Proposed Alignment
 El Dorado Fiber Optics



SOURCE: El Dorado County 2018, Bing Maps 2022

FIGURE 2C
Proposed Alignment
 El Dorado Fiber Optics

