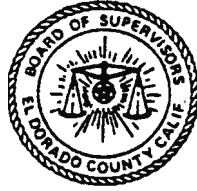


10-0126
3/2/10



RESOLUTION NO. 023-2010

OF THE BOARD OF SUPERVISORS OF THE COUNTY OF EL DORADO

WHEREAS, the County of El Dorado is mandated by the State of California to maintain an adequate and proper General Plan; and

WHEREAS, because of that mandate El Dorado County's General Plan and the various elements thereof must be continually updated with current data, recommendations, and policies; and

WHEREAS, the Development Services/Planning Services Department and the Planning Commission have made recommendations to the Board of Supervisors regarding potential amendments of the Land Use Element of the General Plan; and

WHEREAS, the Board of Supervisors has reviewed and held public hearings on the recommended amendments to the land use element; and

WHEREAS, the Board of Supervisors finds that the proposed amendments to the General Plan are consistent with all elements of the General Plan not otherwise amended.

NOW, THEREFORE, BE IT RESOLVED that the El Dorado County Board of Supervisors hereby approves and accepts the environmental documents on the following amendments to the General Plan, and approves and adopts the following amendments to the General Plan based on the findings and reasons set forth in the staff reports and Planning Commission's actions, except as may be noted herein:

1. GEORGETOWN AREA - Open Space (OS) to Low Density Residential (LDR), consisting of 105 acres, identified by Assessor's Parcel Number 061-071-26 being described as a portion of the Northeast quarter of Section 1, Township 12 North, Range 10 East, M.D.M., as shown in Exhibit A.

This amendment was considered on March 2, 2010, by the Board of Supervisors, and was conceptually approved by the following vote of said Board:

*AYES:
NOES:*

PASSED AND ADOPTED by the Board of Supervisors of the County of El Dorado at a regular meeting of said Board, held the 2nd day of March, 2010, by the following vote of said Board:

Attest:
Suzanne Allen de Sanchez
Clerk of the Board of Supervisors

By: *Marcie McFarland*
Deputy Clerk

Ayes: Knight, Briggs, Nutting, Sweeney, Santiago

Noes: None
Absent: None

Norma Santiago
Chairman, Board of Supervisors

Norma Santiago

I CERTIFY THAT:
THE FOREGOING INSTRUMENT IS A CORRECT COPY OF THE ORIGINAL ON FILE IN THIS OFFICE.

DATE: _____

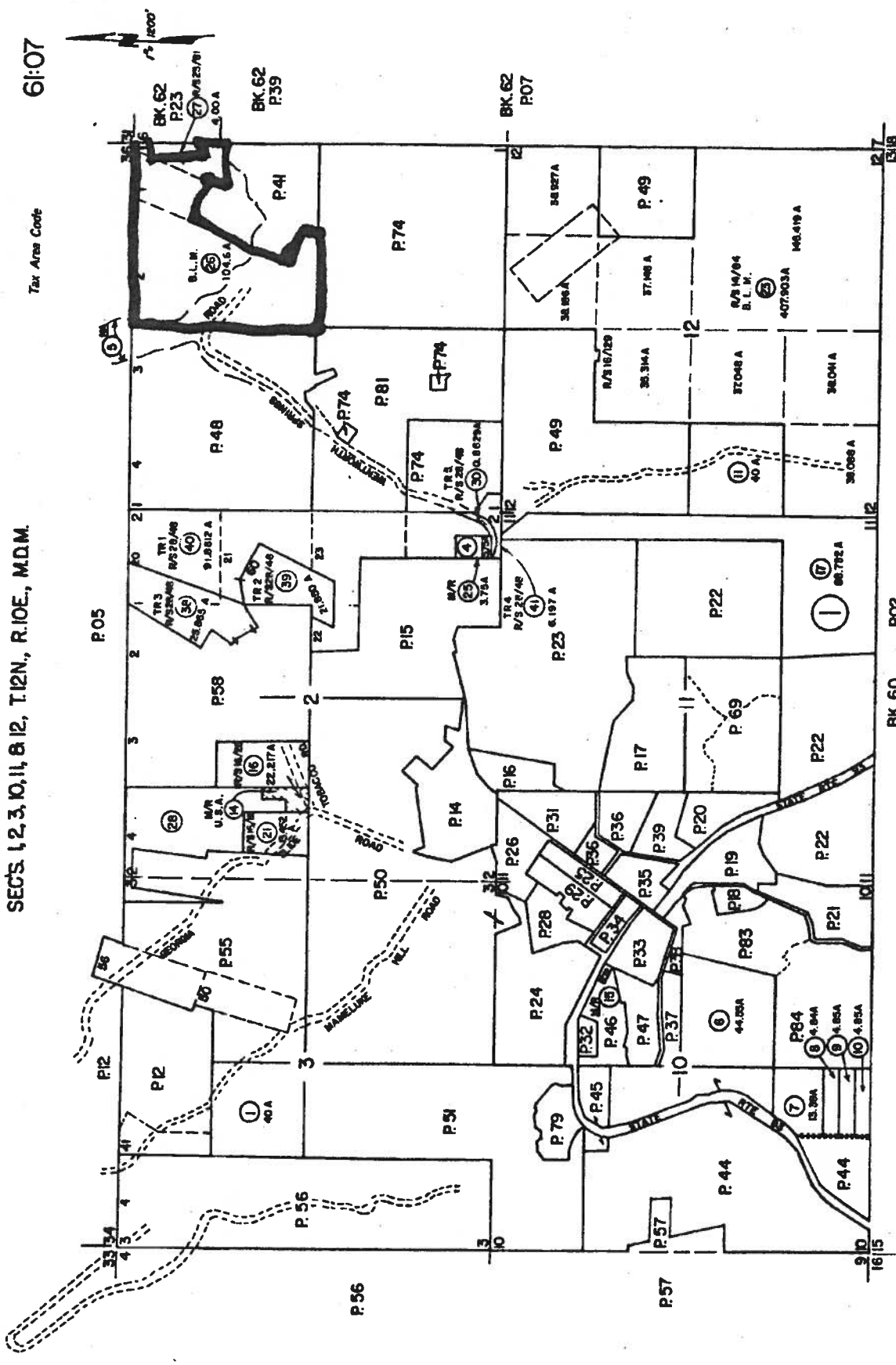
Attest: SUZANNE ALLEN DE SANCHEZ, Clerk of the Board of Supervisors of the County of El Dorado, State of California.

By: _____

SECS 1, 2, 3, 10, 11, & 12, T.12N., R.10E., M.D.M.

Tax Area Code

61:07



Assessor's Map Bk. 01 - Pg. 07
County of El Dorado, California
SEP 18 2008

NOTE - Assessor's Sheet Numbers Shown in Blue
Assessor's Parcel Numbered Schemes in Circle

EXHIBIT A