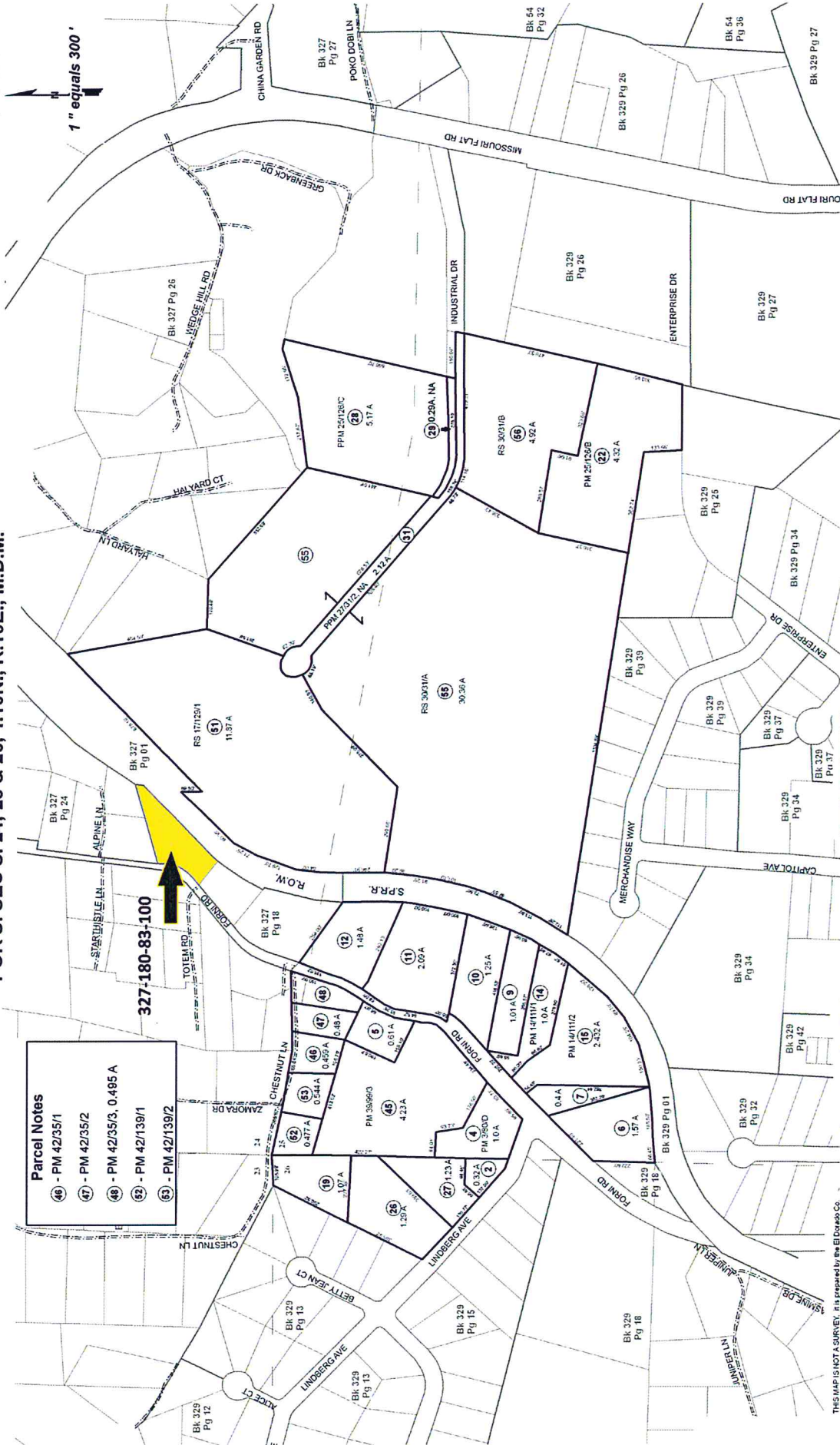


1" equals 300'

Parcel Notes	
46	- PM 42/35/1
47	- PM 42/35/2
48	- PM 42/35/3, 0.495 A
52	- PM 42/139/1
53	- PM 42/139/2

327-180-83-100



Acreages Are Estimates

THIS MAP IS NOT A SURVEY. It is prepared by the El Dorado Co. and characteristics are not guaranteed. Users should verify items such as dimensions and acreage.

Adjacent Map Pages Shown in Grey Text. Assessor's Block Numbers Shown in Ellipses. Assessor's Parcel Numbers Shown in Circles.

Rev. June 14, 2007

Assessor's Map Bk. 329, Pg. 24
County of El Dorado, CA