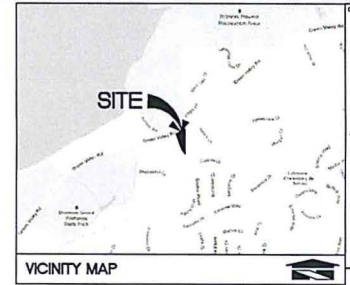
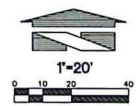
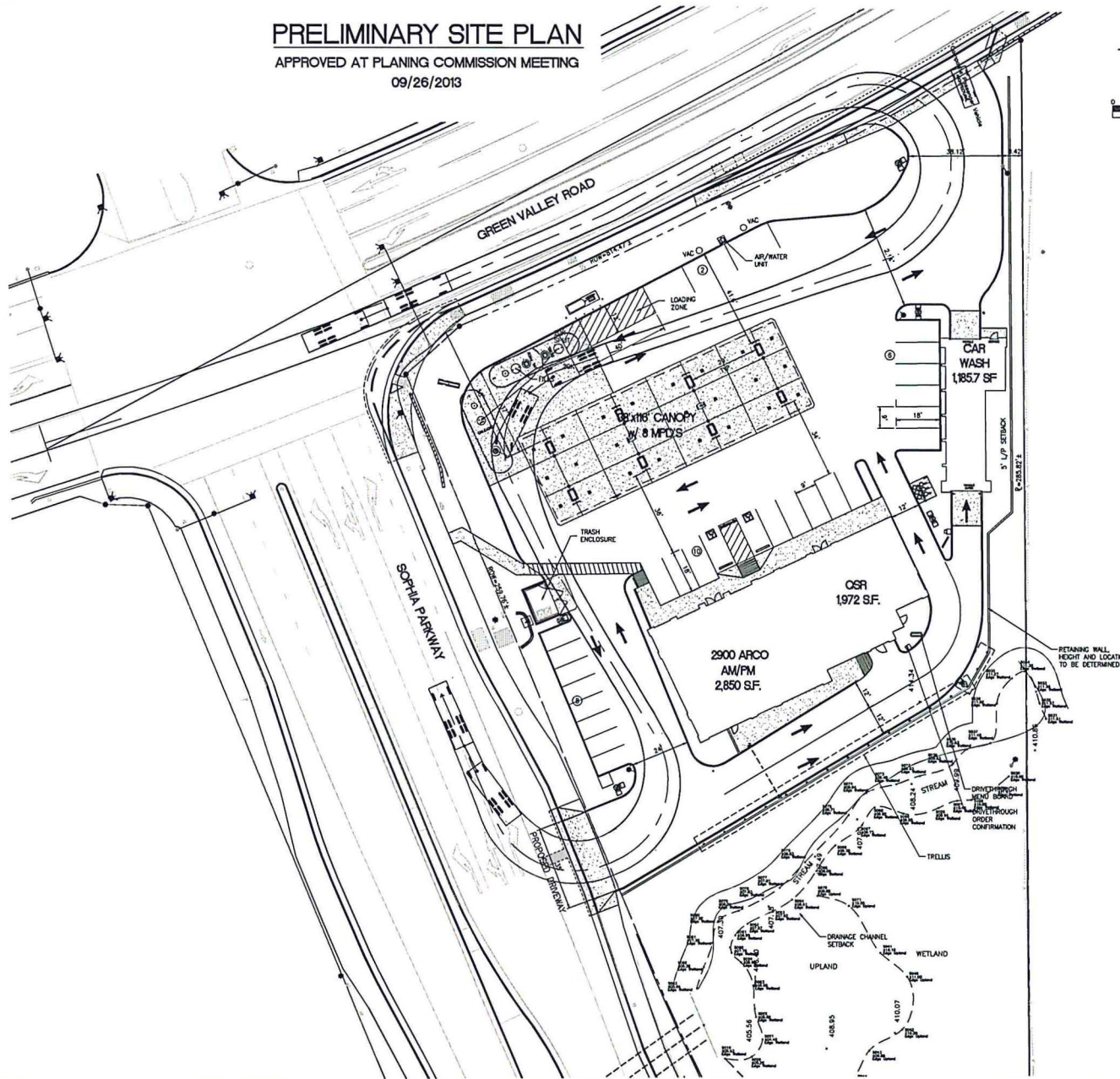


PRELIMINARY SITE PLAN

APPROVED AT PLANING COMMISSION MEETING
09/26/2013



18215 72ND AVENUE SOUTH
FENTON, WA 99032
(425)251-6522
(425)251-8782 FAX

CIVIL ENGINEERING, LAND PLANNING,
SURVEYING, ENVIRONMENTAL SERVICES

NO.	DATE	REVISION DESCRIPTION
1	09/26/13	SCHEMATIC
2		
3		
4		
5		
6		
7		
8		
9		
10		

THIS SHEET IS FOR INFORMATION ONLY

DEVELOPMENT INFORMATION

ARCO NTI
2900 am/pm
w/ 17x65' CAR WASH
FUEL CANOPY w/ 8 MPD/S
AND 1,900 SF O.S.R.

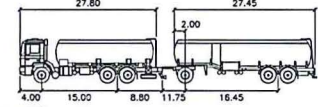
SITE ADDRESS:
GREEN VALLEY ROAD
8 SOPHIA PARKWAY
ELLINGTON HILLS, WA

FACILITY # TBD

DESIGNED BY	DATE	PROJECT NO.
DSB	JANU	15593

SITE PLAN
APPROVED
09/26/2013

STANDARD TANKER TRUCK
SP-1



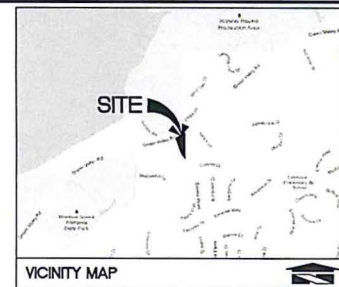
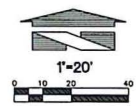
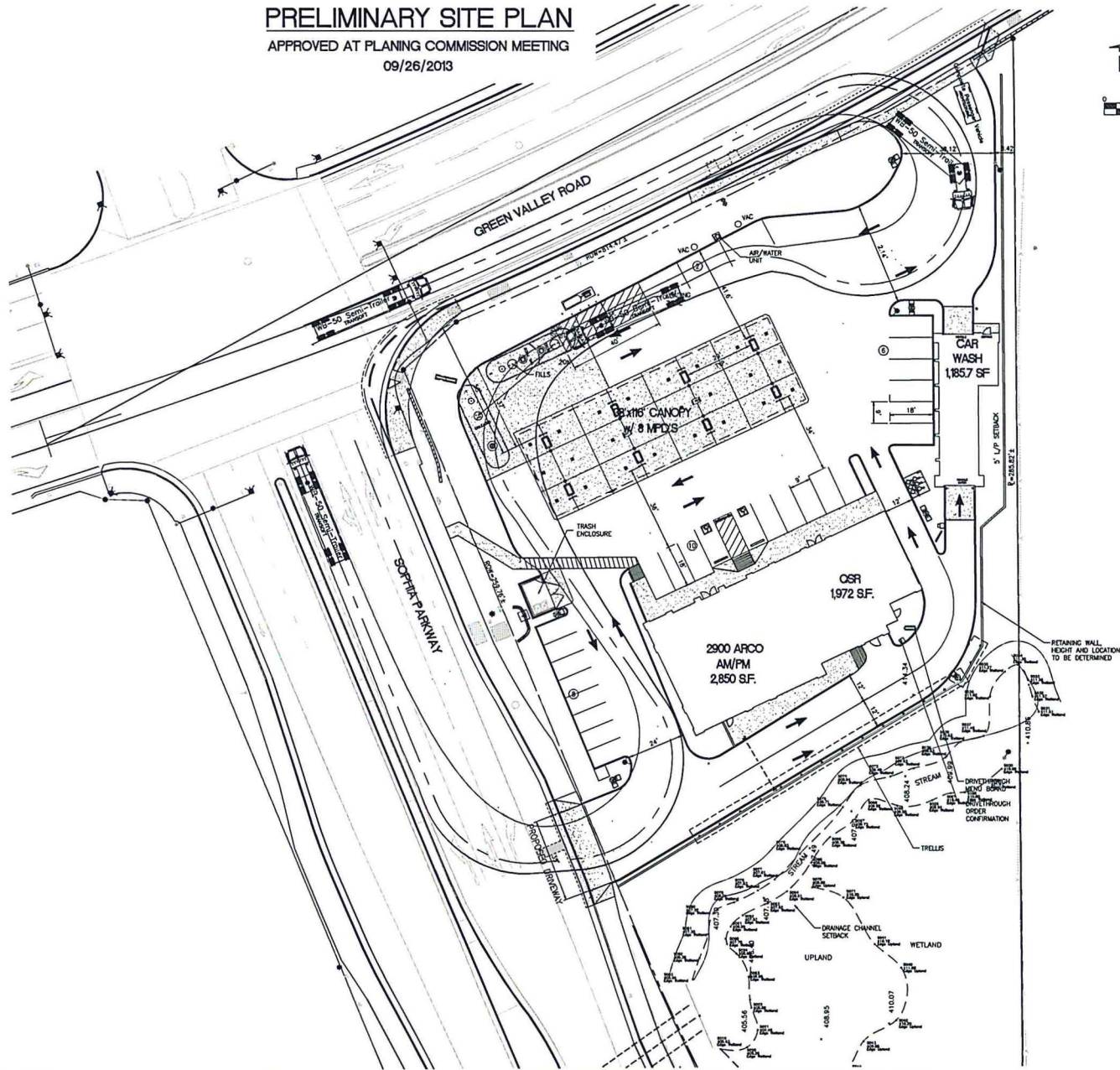
Arco65' feet:

First Part Width	: 8.00	Lock to Lock Time	: 6.0
Trailer Width	: 8.00	Steering Angle	: 35.0
First Part Track	: 7.70	Articulating Angle	: 70.0
Trailer Track	: 7.70		

NOT FOR CONSTRUCTION

PRELIMINARY SITE PLAN

APPROVED AT PLANNING COMMISSION MEETING
09/26/2013



bp

ARCO

BP WEST COAST PRODUCTS LLC

BARGHAUSEN
CONSULTING ENGINEERS, INC.

18215 72ND AVENUE SOUTH
REDDIE, WA 98052
(425)251-6222
(425)251-8782 FAX

DATE: 09/26/13
REVISION DESCRIPTION:

NO.	DATE	REVISION DESCRIPTION
1	09/26/13	ISSUE SET
2		
3		
4		
5		
6		
7		
8		
9		
10		

THIS SHEET IS FOR INFORMATION ONLY

DEVELOPMENT INFORMATION
ARCO NTI
2900 am/pm
w/ 17x85' CAR WASH
FUEL CANOPY w/ 8 MFD'S
AND 1,900 SF O.S.R.

SITE ADDRESS
GREEN VALLEY ROAD
@ BOPHA HARBOR
BLDG#004-BLLS, CA

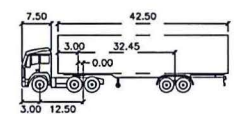
FACILITY # TBD

DESIGNED BY	DATE	APPROVED
DBG	09/26/13	JMW

PROJECT NO: 15593

SITE PLAN
APPROVED
09/26/2013

LARGE DELIVERY TRUCK
SP-3



WB-50 Semi-Trailer

Tractor Width	: 8.00	Lock to Lock Time	: 6.0
Trailer Width	: 8.50	Steering Angle	: 17.7
Tractor Track	: 8.50	Articulating Angle	: 70.0
Trailer Track	: 8.50		

NOT FOR CONSTRUCTION

