



COMMUNITY DEVELOPMENT SERVICES

DEPARTMENT OF TRANSPORTATION

<http://www.edcgov.us/DOT/>

PLACERVILLE OFFICES:

MAIN OFFICE:
 2850 Fairlane Court, Placerville, CA 95667
 (530) 621-5900 / (530) 626-0387 Fax

CONSTRUCTION & MAINTENANCE:
 2441 Headington Road, Placerville, CA 95667
 (530) 642-4909 / (530) 642-0508 Fax

LAKE TAHOE OFFICES:

ENGINEERING:
 924 B Emerald Bay Road, South Lake Tahoe, CA 96150
 (530) 573-7900 / (530) 541-7049 Fax

MAINTENANCE:
 1121 Shakori Drive, South Lake Tahoe, CA 96150
 (530) 573-3180 / (530) 577-8402 Fax

DATE: February 7, 2019

TO: All Prospective Bidders

SUBJECT: **Addendum No. 2**
Diamond Springs Parkway – Phase 1A – SR- 49 Realignment Project, Contract No. 2720, CIP No. 72375

Submit proposals for this work with the understanding and full consideration of this Addendum. The revisions declared in this Addendum are essential parts of the Contract.

ITEM NO.	LOCATION, PAGE, OR DRAWING NO.	DESCRIPTION OF CHANGE
2.01	Cover (Addendum #1)	Bidders are instructed to replace the bid opening date of February 7, 2019 (as changed in Addendum #1) with February 14, 2019 on the cover sheet.
2.02	N-1 REV (Addendum #1)	Bidders are instructed to replace the bid opening date of February 7, 2019 (as changed in Addendum #1) with February 14, 2019 in both the 2 nd paragraph and 3 rd paragraph on page N-1 REV of the Notice to Bidders.
2.03	SP-42	Bidders are Instructed to add the following to section 13 of the Special Provisions: <div style="text-align: center;">Add to section 13-4.03C(3):</div> <p style="text-align: center;">For location of roadway excavation stockpiles see Appendix D.</p>
2.04	SP-50	Bidders are Instructed to add the following section 15 to the Special Provisions: <div style="text-align: center;">15 EXISTING FACILITIES</div> <p style="text-align: center;">Replace “Not Used” in section 15-1.04 with:</p>

ITEM NO.	LOCATION, PAGE, OR DRAWING NO.	DESCRIPTION OF CHANGE
		<p>Remove and dispose of the shed structure and steel pipe bollards necessary in order to construct Stockpile #2. The existing concrete slab for the shed structure may remain in place. Do not remove any asphalt pavement within the footprint of the stockpile. The existing pallets and materials within the shed structure will be moved by the Department. The wood poles supporting the shed structure may be cut at grade and removed. The k-rail near the site entrance will be moved by the Department. The existing HMA grindings may be used to condition the existing ground for a drivable surface on the south side of Stockpile #2.</p> <p>Payment for removing and disposing of the shed structure and all steel pipe bollards, excavating and re-grading the slope adjacent to Stockpile #2, establishing a ditch to ensure positive drainage patterns around the stockpile, and conditioning the ground around the stockpile with HMA on-site grindings is included in the payment for the various items of work.</p>
2.05	SP-50	<p>Bidders are Instructed to add the following to section 17 of the Special Provisions:</p> <p style="text-align: center;">Add to section 17-2.03A:</p> <p>Clear and grub Department-owned property as necessary in order to construct the stockpiles shown in Appendix D.</p>
2.06	SP-51	<p>Bidders are Instructed to replace the following in section 19 of the Special Provisions:</p> <p style="text-align: center;">Replace the 2nd paragraph in section 19-2.01A with:</p> <p>Roadway excavation consists of all excavation and stockpiling involved in the grading and construction of the roadway except structure excavation and any</p>

ITEM NO.	LOCATION, PAGE, OR DRAWING NO.	DESCRIPTION OF CHANGE
		excavation paid for as a separate bid item. For location of roadway excavation stockpiles see Appendix D.
2.07	SP-51	<p>Bidders are Instructed to add the following to section 19 of the Special Provisions:</p> <p style="text-align: center;">Add to section 19-2.03A:</p> <p>Selected material excavated and used for stockpiling must conform to the requirements for imported borrow under section 19-7.02C.</p>
2.08	SP-51	<p>Bidders are Instructed to add the following to section 19 of the Special Provisions:</p> <p style="text-align: center;">Add to 2nd paragraph in section 19-2.04:</p> <p>4. Stockpiling roadway excavation material in stockpile locations shown in Appendix D.</p>
2.09	SP-63	<p>Bidders are Instructed to add the following in section 77 of the Special Provisions:</p> <p style="text-align: center;">Add to section 77-2.01B:</p> <p>Chlorinated water used for disinfection of the pipe must be dechlorinated prior to discharge in the sanitary sewer.</p>
2.10	SP-63	<p>Bidders are Instructed to replace the following in section 77 of the Special Provisions:</p> <p style="text-align: center;">Replace the 1st sentence of the 2nd paragraph of section 77-2.01D with:</p> <p>Remove existing water meter(s) and replace with new water meter(s) furnished by EID at the locations shown.</p>
2.11	SP-67	<p>Bidders are Instructed to add the following section 84 to the Special Provisions:</p> <p style="text-align: center;">84 MARKINGS</p>

ITEM NO.	LOCATION, PAGE, OR DRAWING NO.	DESCRIPTION OF CHANGE
		<p align="center">Replace “Reserved” in section 84-9.03C with:</p> <p>Residue from the removal of painted or thermoplastic traffic stripes and pavement markings contains lead from the paint or thermoplastic. The average lead concentrations are less than 1,000 mg/kg total lead and 5 mg/L soluble lead. This residue:</p> <ol style="list-style-type: none"> 1. Is a nonhazardous waste 2. Does not contain heavy metals in concentrations exceeding the thresholds established by the Health and Safety Code and 22 CA Code of Regs 3. Is not regulated under the Federal Resource Conservation and Recovery Act (RCRA), 42 USC § 6901 et seq. <p>Management of this material exposes workers to health hazards that must be addressed in your lead compliance plan.</p>
2.12	Appendix D	Bidders are instructed to replace Appendix D, “Stockpile Locations” with the attached revised Appendix D, “Stockpile Locations” to the Special Provisions:
2.13	Addendum #1 Draft Agreement “Exhibit A Contractor’s Bid and Bid Price Schedule” C-11 REV to C-18 REV	Bidders are instructed to replace Draft Agreement, “Exhibit A Contractor’s Bid and Bid Price Schedule” pages C-11 REV to C-18 REV from Addendum #1 with C-11 REV to C-18 REV (attached):
2.14	Addendum #1 Proposal “Proposal Pay Items and Bid Price Schedule” P-3 REV to P-10 REV	Bidders are instructed to replace Proposal, “Proposal Pay Items and Bid Price Schedule” pages P-3 REV to P-10 REV from Addendum #1 with P-3 REV to P-10 REV (attached):
2.15	Plan Sheet EC-3	Bidders are instructed to replace Plan Sheet EC-3, “EID Waterline Plan” with the attached revised Plan Sheet W-5.
2.16	Plan Sheet W-5	Bidders are instructed to replace Plan Sheet W-5, “EID Waterline Plan” with the attached revised Plan Sheet W-5.

Indicate receipt of this Addendum by filling in the number of this Addendum in the space provided on the signature page of the Proposal. Holders who have already mailed their Proposal can contact Jennifer Rimoldi at 530-621-7592 (email: jennifer.rimoldi@edcgov.us) to arrange return of their Proposal. Inform all suppliers and subcontractors as necessary.

The Department of Transportation is only sending this addendum by posting on QuestCDN’s website at: <https://www.questcdn.com/>. If you are not a Contract Documents holder, but request a set of

documents to bid on this Project, you must comply with the requirements of this Addendum when submitting your bid.



Recommended by:
Matt Smeltzer, Deputy Director,
Fairlane Engineering

2/7/19
Date



Approved by:
Rafael Martinez, Director
Department of Transportation

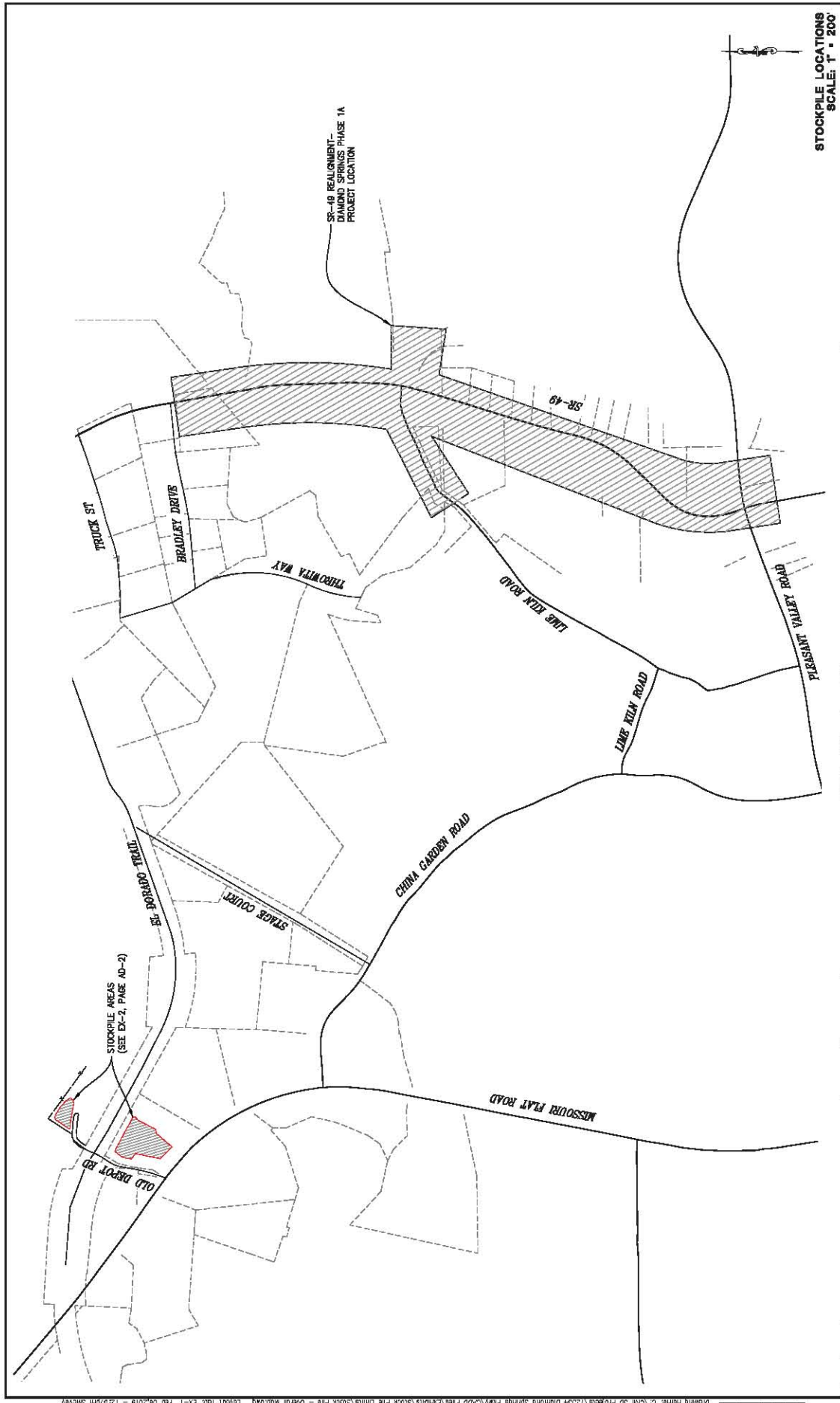
2/7/19
Date

End of Addendum No. 2

APPENDIX D

**to the contract documents for
Diamond Springs Parkway – Phase 1A – SR-49 Realignment
CIP No. 72375, Contract No. 2720**

STOCKPILE LOCATIONS



STOCKPILE LOCATIONS
SCALE: 1" = 200'

SHEET
EX-1
1 OF 3
CIP No. 72375

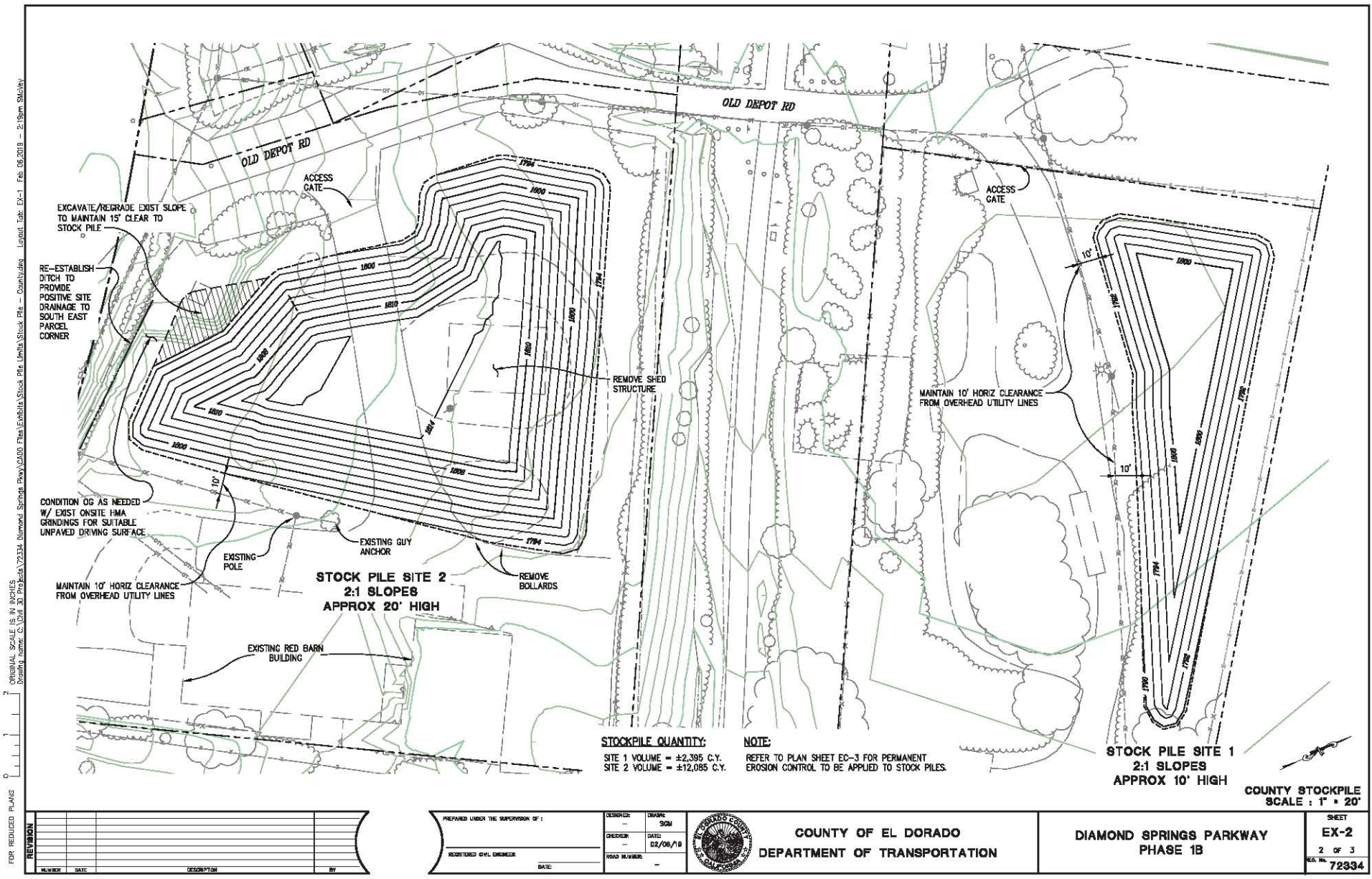
COUNTY OF EL DORADO
DEPARTMENT OF TRANSPORTATION



DESIGNED BY	AM
CHECKED BY	AM
DATE	02/09/10
PROJECT NO.	SR-49
ISSUED FOR	PERMITS
DATE	

NO.	DATE	DESCRIPTION

FOR REDUCED PLANS
ORIGINAL SCALE IS IN INCHES
Drawing Name: D:\CIV 3D Projects\72375\Diamond Springs Parkway\CAD Files\Exhibit\Stock File\limits\Stock File - Overall Mapping Layout Tab - EX-1 Feb 08, 2019 - 12:57pm SmcNay



STOCKPILE QUANTITY:
 SITE 1 VOLUME = ±2,395 C.Y.
 SITE 2 VOLUME = ±12,085 C.Y.

NOTE:
 REFER TO PLAN SHEET EC-3 FOR PERMANENT
 EROSION CONTROL TO BE APPLIED TO STOCK PILES.

ORIGINAL SCALE IS IN INCHES
 COUNTY STOCKPILE SCALE: 1" = 20'
 FOR REDUCED PLANS
 0 10 20 30 40 50 60 70 80 90 100

REVISION	NUMBER	DATE	DESCRIPTION	BY

PREPARED UNDER THE SUPERVISION OF:	DESIGNED:	DRAWN:
REGISTERED CIVIL ENGINEER	SGM	SGM
DATE:	DATE:	DATE:
	02/08/19	



COUNTY OF EL DORADO
DEPARTMENT OF TRANSPORTATION

DIAMOND SPRINGS PARKWAY
PHASE 1B

SHEET
EX-2
2 OF 3
72334

EXHIBIT A
CONTRACTOR'S BID AND BID PRICE SCHEDULE
DIAMOND SPRINGS PARKWAY – PHASE 1A – SR-49 REALIGNMENT
CIP No. 72375, CONTRACT No. 2720

BASE BID (SCHEDULE A)

ITEM NO.	ITEM CODE	ITEM DESCRIPTION	UNIT OF MEASURE	ESTIMATED QUANTITY	UNIT PRICE (IN FIGURES)	ITEM TOTAL (IN FIGURES)
1	70030	LEAD COMPLIANCE PLAN	LS	1		
2	72007A	EXCAVATION SAFETY	LS	1		
3	80050	PROGRESS SCHEDULE (CRITICAL PATH METHOD)	LS	1		
4	100100	DEVELOP WATER SUPPLY	LS	1		
5	120090	CONSTRUCTION AREA SIGNS	LS	1		
6	120100	TRAFFIC CONTROL SYSTEM	LS	1		
7	120149	TEMPORARY PAVEMENT MARKING (PAINT)	SF	531		
8	120159	TEMPORARY TRAFFIC STRIPE (PAINT)	LF	21,922		
9	120300	TEMPORARY PAVEMENT MARKER	EA	500		
10	128652	PORTABLE CHANGEABLE MESSAGE SIGN (LS)	LS	1		
11	129000	TEMPORARY RAILING (TYPE K)	LF	2,100		
12	129110A	TEMPORARY CRASH CUSHION (ABSORB 350)	EA	4		
13	130100	JOB SITE MANAGEMENT	LS	1		

14	130300		PREPARE STORM WATER POLLUTION PREVENTION PLAN	LS	1		
15	130310		RAIN EVENT ACTION PLAN	EA	40	\$500.00	\$20,000.00
16	130320		STORM WATER SAMPLING AND ANALYSIS DAY	EA	40	\$400.00	\$16,000.00
17	130330		STORM WATER ANNUAL REPORT	EA	2	\$2,000.00	\$4,000.00
18	149001A		PREPARE FUGITIVE DUST CONTROL PLAN	LS	1		
19	153249A		DEMOLISH EXISTING PRESSURE REDUCING STATION VAULT	EA	1		
20	170103		CLEARING AND GRUBBING (LS)	LS	1		
21	190101	F	ROADWAY EXCAVATION	CY	69,500		
22	192037	F	STRUCTURE EXCAVATION (RETAINING WALL)	CY	1,467		
23	193013		STRUCTURE BACKFILL (RETAINING WALL)	CY	1,139		
24	193031		PERVIOUS BACKFILL MATERIAL (RETAINING WALL)	CY	43		
25	194001	F	DITCH EXCAVATION	CY	170		
26	202026A		REMOVE AND RELOCATE AIR RELEASE VALVE	EA	1		
27	202027		RELOCATE WATER METER	EA	4		
28	206045A		IRRIGATION MODIFICATIONS	LS	1		
29	208430A		INSTALL FIRE HYDRANT	EA	2		
30	208590	P	6" GATE VALVE	EA	3		
31	208591	P	8" GATE VALVE	EA	9		

32	208591A	P	12" GATE VALVE	EA	13		
33	208633A	P	1" AIR RELEASE VALVE	EA	1		
34	208635A	P	2" AIR RELEASE VALVE	EA	1		
35	208640A		4" BLOWOFF VALVE	EA	4		
36	210270		ROLLED EROSION CONTROL PRODUCT (NETTING)	SF	24,829		
37	210280		ROLLED EROSION CONTROL PRODUCT (BLANKET)	SF	136,135		
38	210350		FIBER ROLLS	LF	3,508		
39	210430		HYDROSEED	SF	246,094		
40	260203		CLASS 2 AGGREGATE BASE (CY)	CY	11,100		
41	290301		CEMENT TREATED PERMEABLE BASE	CY	2,351		
42	390132		HOT MIX ASPHALT (TYPE A)	TON	9,913		
43	390402		RUBBERIZED HOT MIX ASPHALT-OPEN GRADED (OPEN GRADED FRICTION COURSE)	TON	151		
44	394073		PLACE HOT MIX ASPHALT DIKE (TYPE A)	LF	985		
45	394076		PLACE HOT MIX ASPHALT DIKE (TYPE E)	LF	2,085		
46	394090		PLACE HOT MIX ASPHALT (MISCELLANEOUS AREA)	SY	78		
47	398200		COLD PLANE ASPHALT CONCRETE PAVEMENT	SY	4,303		
48	475010A	P-F	RECONSTRUCT RETAINING WALL	LS	1		
49	510060	F	STRUCTURAL CONCRETE, RETAINING WALL	CY	365		

50	510061	F	STRUCTURAL CONCRETE, SOUND WALL	CY	41		
51	511035	F	ARCHITECTURAL TREATMENT	SF	961		
52	520103	P-F	BAR REINFORCING STEEL (RETAINING WALL)	LB	18,977		
53	582001	P-F	SOUND WALL (MASONRY BLOCK)	SF	915		
54	600051		REMOVE SOUND WALL (LF)	LF	256		
55	610107	P	15" ALTERNATIVE PIPE CULVERT	LF	106		
56	610108	P	18" ALTERNATIVE PIPE CULVERT	LF	1,388		
57	610300	F	CONCRETE BACKFILL (PIPE TRENCH)	CY	9		
58	641101A		1" PVC (SCHEDULE 80)	LF	307		
59	641101B		6" PVC SEWERLINE	LF	127		
60	641101C		8" PVC WATERLINE (C900 DR14)	LF	617		
61	650012	P	15" REINFORCED CONCRETE PIPE	LF	17		
62	650014	P	18" REINFORCED CONCRETE PIPE	LF	110		
63	665010A	P	12" DUCTILE IRON	LF	2,532		
64	665012	P	12" CORRUGATED STEEL PIPE (.079" THICK)	LF	4		
65	680902	P	6" PERFORATED PLASTIC PIPE UNDERDRAIN	LF	850		
66	680903	P	6" NON-PERFORATED PLASTIC PIPE UNDERDRAIN	LF	23		
67	702016A		8" TO 6" REDUCER	EA	1		

68	702016B		12" TO 8" REDUCER	EA	1		
69	705309		15" ALTERNATIVE FLARED END SECTION	EA	2		
70	705311		18" ALTERNATIVE FLARED END SECTION	EA	2		
71	707117A		DRAINAGE INLET	EA	11		
72	707217A		36" SEWER MANHOLE	EA	2		
73	707225A		STORM DRAIN MANHOLE	EA	1		
74	710114		ABANDON PIPELINE	LF	2,400		
75	710132		REMOVE CULVERT (LF)	LF	38		
76	710136A		REMOVE WATERLINE	LF	650		
77	710150		REMOVE INLET	EA	1		
78	710152		REMOVE HEADWALL	EA	1		
79	710167		REMOVE FLARED END SECTION (EA)	EA	2		
80	710216		ADJUST PIPE INLET TO GRADE	EA	2		
81	710252A		MODIFY EXISTING STORM DRAIN MANHOLE	EA	1		
82	721026	F	ROCK SLOPE PROTECTION (NO. 1, METHOD B) (CY)	CY	36		
83	729011	F	ROCK SLOPE PROTECTION FABRIC (CLASS 8)	SY	120		
84	730010		MINOR CONCRETE (CURB) (LF)	LF	2,958		
85	730040		MINOR CONCRETE (GUTTER) (LF)	LF	135		

86	730040A		MINOR CONCRETE (GUTTER) (RETAINING WALL)	LF	175		
87	731502A		MINOR CONCRETE (CONCRETE PAD)	CY	2		
88	731504		MINOR CONCRETE (CURB AND GUTTER)	LF	562		
89	731521		MINOR CONCRETE (SIDEWALK)	CY	150		
90	731623		MINOR CONCRETE (CURB RAMP)	EA	10		
91	731710		REMOVE CONCRETE CURB (LF)	LF	491		
92	731780		REMOVE CONCRETE SIDEWALK (SQYD)	SY	94		
93	780460	F	ANTI-GRAFFITI COATING	SF	1,672		
94	782120		RELOCATE MAILBOX	EA	3		
95	800002	P	FENCE (TYPE BW, WOOD POST)	LF	766		
96	800051	P	FENCE (TYPE WM, METAL POST)	LF	915		
97	800060A		FENCE (TYPE WOOD, 6 FOOT)	LF	146		
98	800100A		TEMPORARY FENCE (TYPE ESA)	LF	4,054		
99	800360A	P	CHAIN LINK FENCE (TYPE CL-6) (MOD)	LF	1,568		
100	802620		16' CHAIN LINK GATE (TYPE CL-6)	EA	1		
101	802670		24' CHAIN LINK GATE (TYPE CL-6)	EA	2		
102	803020		REMOVE FENCE	LF	4,215		
103	810120		REMOVE PAVEMENT MARKER	EA	199		

104	810180		DELINEATOR (CLASS 2)	EA	15		
105	810250	P	PAVEMENT MARKER (RETROREFLECTIVE- RECESSED)	EA	370		
106	820110		MILEPOST MARKER	EA	5		
107	820112		MARKER (CULVERT)	EA	3		
108	820141		OBJECT MARKER (TYPE K-1)	EA	2		
109	820250		REMOVE ROADSIDE SIGN	EA	7		
110	820530		RESET ROADSIDE SIGN	EA	4		
111	820610		RELOCATE ROADSIDE SIGN	EA	13		
112	820750		FURNISH SINGLE SHEET ALUMINUM SIGN (0.063"-UNFRAMED)	SF	100		
113	820760		FURNISH SINGLE SHEET ALUMINUM SIGN (0.080"-UNFRAMED)	SF	23		
114	820790		FURNISH SINGLE SHEET ALUMINUM SIGN (0.080"-FRAMED)	SF	48		
115	820840		ROADSIDE SIGN - ONE POST	EA	7		
116	820850		ROADSIDE SIGN - TWO POST	EA	2		
117	839521	P-F	CABLE RAILING	LF	177		
118	839701		CONCRETE BARRIER (TYPE 60)	LF	15		
119	839704		CONCRETE BARRIER (TYPE 60D)	LF	175		
120	840502		THERMOPLASTIC TRAFFIC STRIPE (ENHANCED WET NIGHT VISIBILITY)	LF	22,462		

121	840516		THERMOPLASTIC PAVEMENT MARKING (ENHANCED WET NIGHT VISIBILITY)	SF	2,005			
122	846030		REMOVE THERMOPLASTIC TRAFFIC STRIPE	LF	7,225			
123	846035		REMOVE THERMOPLASTIC PAVEMENT MARKING	SF	774			
124	870400A		MODIFY SIGNAL AND LIGHTING	LS	1			
125	995200A		WATER SERVICE	EA	9			
126	995200B		SEWER SERVICE	EA	1			
127	999990		MOBILIZATION	LS	1			
TOTAL FOR BASE BID (SCHEDULE A):								

ADDITIVE ALTERNATE BID (SCHEDULE B)

ITEM NO.	ITEM CODE	ITEM DESCRIPTION	UNIT OF MEASURE	ESTIMATED QUANTITY	UNIT PRICE (IN FIGURES)	ITEM TOTAL (IN FIGURES)
128	87181X	COMMUNICATION CONDUIT	LF	1,885		
TOTAL FOR ADDITIVE ALTERNATE BID (SCHEDULE B):						

(F) Final Pay Quantity
(P) Eligible for Partial Payment
(LS) Lump Sum

Note: Award will be based on the Base Bid (Schedule A) only.

**PROPOSAL PAY ITEMS AND BID PRICE SCHEDULE
DIAMOND SPRINGS PARKWAY – PHASE 1A – SR-49 REALIGNMENT
CIP No. 72375, CONTRACT No. 2720**

BASE BID (SCHEDULE A)

ITEM NO.	ITEM CODE	ITEM DESCRIPTION	UNIT OF MEASURE	ESTIMATED QUANTITY	UNIT PRICE (IN FIGURES)	ITEM TOTAL (IN FIGURES)
1	70030	LEAD COMPLIANCE PLAN	LS	1		
2	72007A	EXCAVATION SAFETY	LS	1		
3	80050	PROGRESS SCHEDULE (CRITICAL PATH METHOD)	LS	1		
4	100100	DEVELOP WATER SUPPLY	LS	1		
5	120090	CONSTRUCTION AREA SIGNS	LS	1		
6	120100	TRAFFIC CONTROL SYSTEM	LS	1		
7	120149	TEMPORARY PAVEMENT MARKING (PAINT)	SF	531		
8	120159	TEMPORARY TRAFFIC STRIPE (PAINT)	LF	21,922		
9	120300	TEMPORARY PAVEMENT MARKER	EA	500		
10	128652	PORTABLE CHANGEABLE MESSAGE SIGN (LS)	LS	1		
11	129000	TEMPORARY RAILING (TYPE K)	LF	2,100		
12	129110A	TEMPORARY CRASH CUSHION (ABSORB 350)	EA	4		
13	130100	JOB SITE MANAGEMENT	LS	1		
14	130300	PREPARE STORM WATER POLLUTION PREVENTION PLAN	LS	1		
15	130310	RAIN EVENT ACTION PLAN	EA	40	\$500.00	\$20,000.00

16	130320		STORM WATER SAMPLING AND ANALYSIS DAY	EA	40	\$400.00	\$16,000.00
17	130330		STORM WATER ANNUAL REPORT	EA	2	\$2,000.00	\$4,000.00
18	149001A		PREPARE FUGITIVE DUST CONTROL PLAN	LS	1		
19	153249A		DEMOLISH EXISTING PRESSURE REDUCING STATION VAULT	EA	1		
20	170103		CLEARING AND GRUBBING (LS)	LS	1		
21	190101	F	ROADWAY EXCAVATION	CY	69,500		
22	192037	F	STRUCTURE EXCAVATION (RETAINING WALL)	CY	1,467		
23	193013		STRUCTURE BACKFILL (RETAINING WALL)	CY	1,139		
24	193031		PERVIOUS BACKFILL MATERIAL (RETAINING WALL)	CY	43		
25	194001	F	DITCH EXCAVATION	CY	170		
26	202026A		REMOVE AND RELOCATE AIR RELEASE VALVE	EA	1		
27	202027		RELOCATE WATER METER	EA	4		
28	206405A		IRRIGATION MODIFICATIONS	LS	1		
29	208430A		INSTALL FIRE HYDRANT	EA	2		
30	208590	P	6" GATE VALVE	EA	3		
31	208591	P	8" GATE VALVE	EA	9		
32	208591A	P	12" GATE VALVE	EA	13		
33	208633A	P	1" AIR RELEASE VALVE	EA	1		

34	208635A	P	2" AIR RELEASE VALVE	EA	1		
35	208640A		4" BLOWOFF VALVE	EA	4		
36	210270		ROLLED EROSION CONTROL PRODUCT (NETTING)	SF	24,829		
37	210280		ROLLED EROSION CONTROL PRODUCT (BLANKET)	SF	136,135		
38	210350		FIBER ROLLS	LF	3,508		
39	210430		HYDROSEED	SF	246,094		
40	260203		CLASS 2 AGGREGATE BASE (CY)	CY	11,100		
41	290301		CEMENT TREATED PERMEABLE BASE	CY	2,351		
42	390132		HOT MIX ASPHALT (TYPE A)	TON	9,913		
43	390402		RUBBERIZED HOT MIX ASPHALT-OPEN GRADED (OPEN GRADED FRICTION COURSE)	TON	151		
44	394073		PLACE HOT MIX ASPHALT DIKE (TYPE A)	LF	985		
45	394076		PLACE HOT MIX ASPHALT DIKE (TYPE E)	LF	2,085		
46	394090		PLACE HOT MIX ASPHALT (MISCELLANEOUS AREA)	SY	78		
47	398200		COLD PLANE ASPHALT CONCRETE PAVEMENT	SY	4,303		
48	475010A	P-F	RECONSTRUCT RETAINING WALL	LS	1		
49	510060	F	STRUCTURAL CONCRETE, RETAINING WALL	CY	365		
50	510061	F	STRUCTURAL CONCRETE, SOUND WALL	CY	41		
51	511035	F	ARCHITECTURAL TREATMENT	SF	961		

52	520103	P-F	BAR REINFORCING STEEL (RETAINING WALL)	LB	18,977		
53	582001	P-F	SOUND WALL (MASONRY BLOCK)	SF	915		
54	600051		REMOVE SOUND WALL (LF)	LF	256		
55	610107	P	15" ALTERNATIVE PIPE CULVERT	LF	106		
56	610108	P	18" ALTERNATIVE PIPE CULVERT	LF	1,388		
57	610300	F	CONCRETE BACKFILL (PIPE TRENCH)	CY	9		
58	641101A		1" PVC (SCHEDULE 80)	LF	307		
59	641101B		6" PVC SEWERLINE	LF	127		
60	641101C		8" PVC WATERLINE (C900 DR14)	LF	617		
61	650012	P	15" REINFORCED CONCRETE PIPE	LF	17		
62	650014	P	18" REINFORCED CONCRETE PIPE	LF	110		
63	665010A	P	12" DUCTILE IRON	LF	2,532		
64	665012	P	12" CORRUGATED STEEL PIPE (.079" THICK)	LF	4		
65	680902	P	6" PERFORATED PLASTIC PIPE UNDERDRAIN	LF	850		
66	680903	P	6" NON-PERFORATED PLASTIC PIPE UNDERDRAIN	LF	23		
67	702016A		8" TO 6" REDUCER	EA	1		
68	702016B		12" TO 8" REDUCER	EA	1		
69	705309		15" ALTERNATIVE FLARED END SECTION	EA	2		

70	705311		18" ALTERNATIVE FLARED END SECTION	EA	2		
71	707117A		DRAINAGE INLET	EA	11		
72	707217A		36" SEWER MANHOLE	EA	2		
73	707225A		STORM DRAIN MANHOLE	EA	1		
74	710114		ABANDON PIPELINE	LF	2,400		
75	710132		REMOVE CULVERT (LF)	LF	38		
76	710136A		REMOVE WATERLINE	LF	650		
77	710150		REMOVE INLET	EA	1		
78	710152		REMOVE HEADWALL	EA	1		
79	710167		REMOVE FLARED END SECTION (EA)	EA	2		
80	710216		ADJUST PIPE INLET TO GRADE	EA	2		
81	710252A		MODIFY EXISTING STORM DRAIN MANHOLE	EA	1		
82	721026	F	ROCK SLOPE PROTECTION (NO. 1, METHOD B) (CY)	CY	36		
83	729011	F	ROCK SLOPE PROTECTION FABRIC (CLASS 8)	SY	120		
84	730010		MINOR CONCRETE (CURB) (LF)	LF	2,958		
85	730040		MINOR CONCRETE (GUTTER) (LF)	LF	135		
86	730040A		MINOR CONCRETE (GUTTER) (RETAINING WALL)	LF	175		
87	731502A		MINOR CONCRETE (CONCRETE PAD)	CY	2		

88	731504		MINOR CONCRETE (CURB AND GUTTER)	LF	562		
89	731521		MINOR CONCRETE (SIDEWALK)	CY	150		
90	731623		MINOR CONCRETE (CURB RAMP)	EA	10		
91	731710		REMOVE CONCRETE CURB (LF)	LF	491		
92	731780		REMOVE CONCRETE SIDEWALK (SQYD)	SY	94		
93	780460	F	ANTI-GRAFFITI COATING	SF	1,672		
94	782120		RELOCATE MAILBOX	EA	3		
95	800002	P	FENCE (TYPE BW, WOOD POST)	LF	766		
96	800051	P	FENCE (TYPE WM, METAL POST)	LF	915		
97	800060A		FENCE (TYPE WOOD, 6 FOOT)	LF	146		
98	800100A		TEMPORARY FENCE (TYPE ESA)	LF	4,054		
99	800360A	P	CHAIN LINK FENCE (TYPE CL-6) (MOD)	LF	1,568		
100	802620		16' CHAIN LINK GATE (TYPE CL-6)	EA	1		
101	802670		24' CHAIN LINK GATE (TYPE CL-6)	EA	2		
102	803020		REMOVE FENCE	LF	4,215		
103	810120		REMOVE PAVEMENT MARKER	EA	199		
104	810180		DELINEATOR (CLASS 2)	EA	15		
105	810250	P	PAVEMENT MARKER (RETROREFLECTIVE- RECESSED)	EA	370		

106	820110		MILEPOST MARKER	EA	5		
107	820112		MARKER (CULVERT)	EA	3		
108	820141		OBJECT MARKER (TYPE K-1)	EA	2		
109	820250		REMOVE ROADSIDE SIGN	EA	7		
110	820530		RESET ROADSIDE SIGN	EA	4		
111	820610		RELOCATE ROADSIDE SIGN	EA	13		
112	820750		FURNISH SINGLE SHEET ALUMINUM SIGN (0.063"-UNFRAMED)	SF	100		
113	820760		FURNISH SINGLE SHEET ALUMINUM SIGN (0.080"-UNFRAMED)	SF	23		
114	820790		FURNISH SINGLE SHEET ALUMINUM SIGN (0.080"-FRAMED)	SF	48		
115	820840		ROADSIDE SIGN - ONE POST	EA	7		
116	820850		ROADSIDE SIGN - TWO POST	EA	2		
117	839521	P-F	CABLE RAILING	LF	177		
118	839701		CONCRETE BARRIER (TYPE 60)	LF	15		
119	839704		CONCRETE BARRIER (TYPE 60D)	LF	175		
120	840502		THERMOPLASTIC TRAFFIC STRIPE (ENHANCED WET NIGHT VISIBILITY)	LF	22,462		
121	840516		THERMOPLASTIC PAVEMENT MARKING (ENHANCED WET NIGHT VISIBILITY)	SF	2,005		
122	846030		REMOVE THERMOPLASTIC TRAFFIC STRIPE	LF	7,225		
123	846035		REMOVE THERMOPLASTIC PAVEMENT MARKING	SF	774		

124	870400A		MODIFY SIGNAL AND LIGHTING	LS	1			
125	995200A		WATER SERVICE	EA	9			
126	995200B		SEWER SERVICE	EA	1			
127	999990		MOBILIZATION	LS	1			
TOTAL FOR BASE BID (SCHEDULE A):								

ADDITIVE ALTERNATE BID (SCHEDULE B)

ITEM NO.	ITEM CODE		ITEM DESCRIPTION	UNIT OF MEASURE	ESTIMATED QUANTITY	UNIT PRICE (IN FIGURES)	ITEM TOTAL (IN FIGURES)	
128	87181X		COMMUNICATION CONDUIT	LF	1,885			
TOTAL FOR ADDITIVE ALTERNATE BID (SCHEDULE B):								

- (F) Final Pay Quantity
- (P) Eligible for Partial Payment
- (LS) Lump Sum

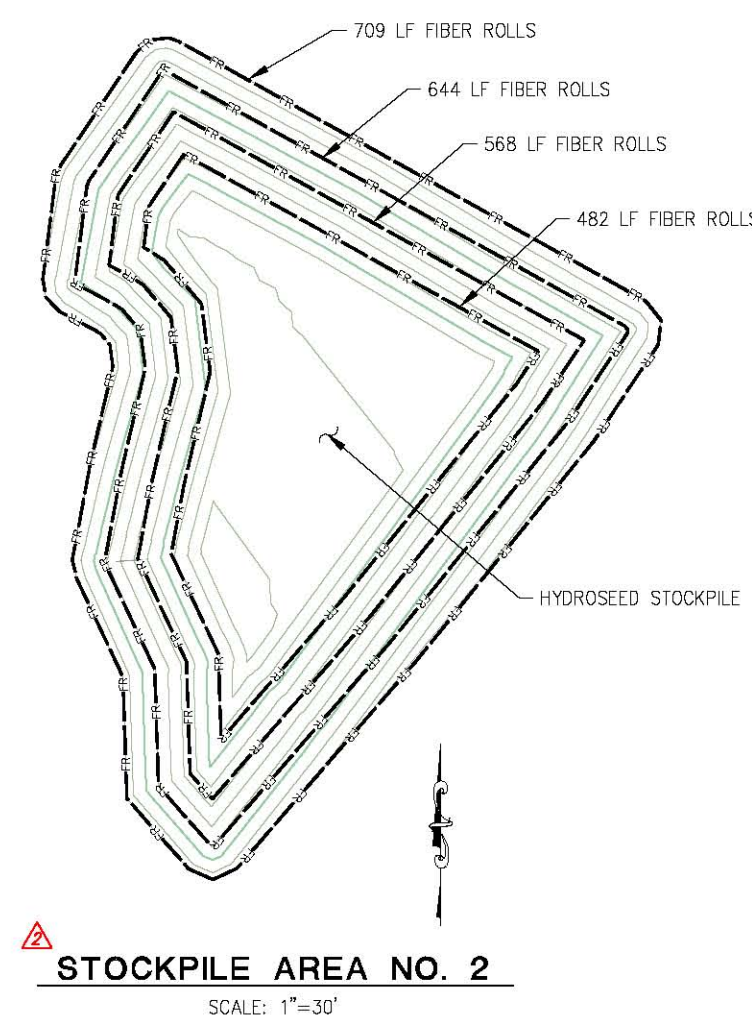
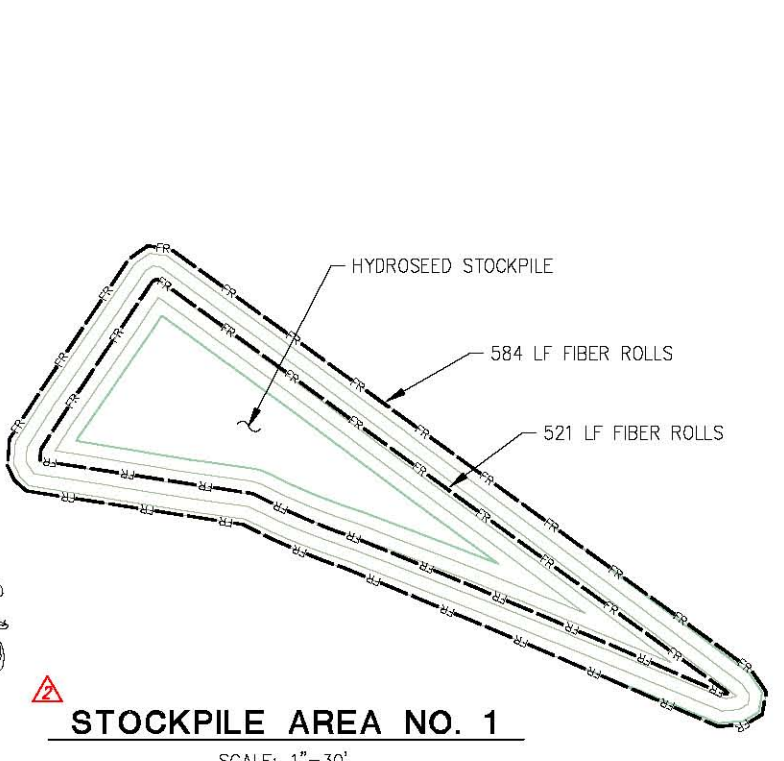
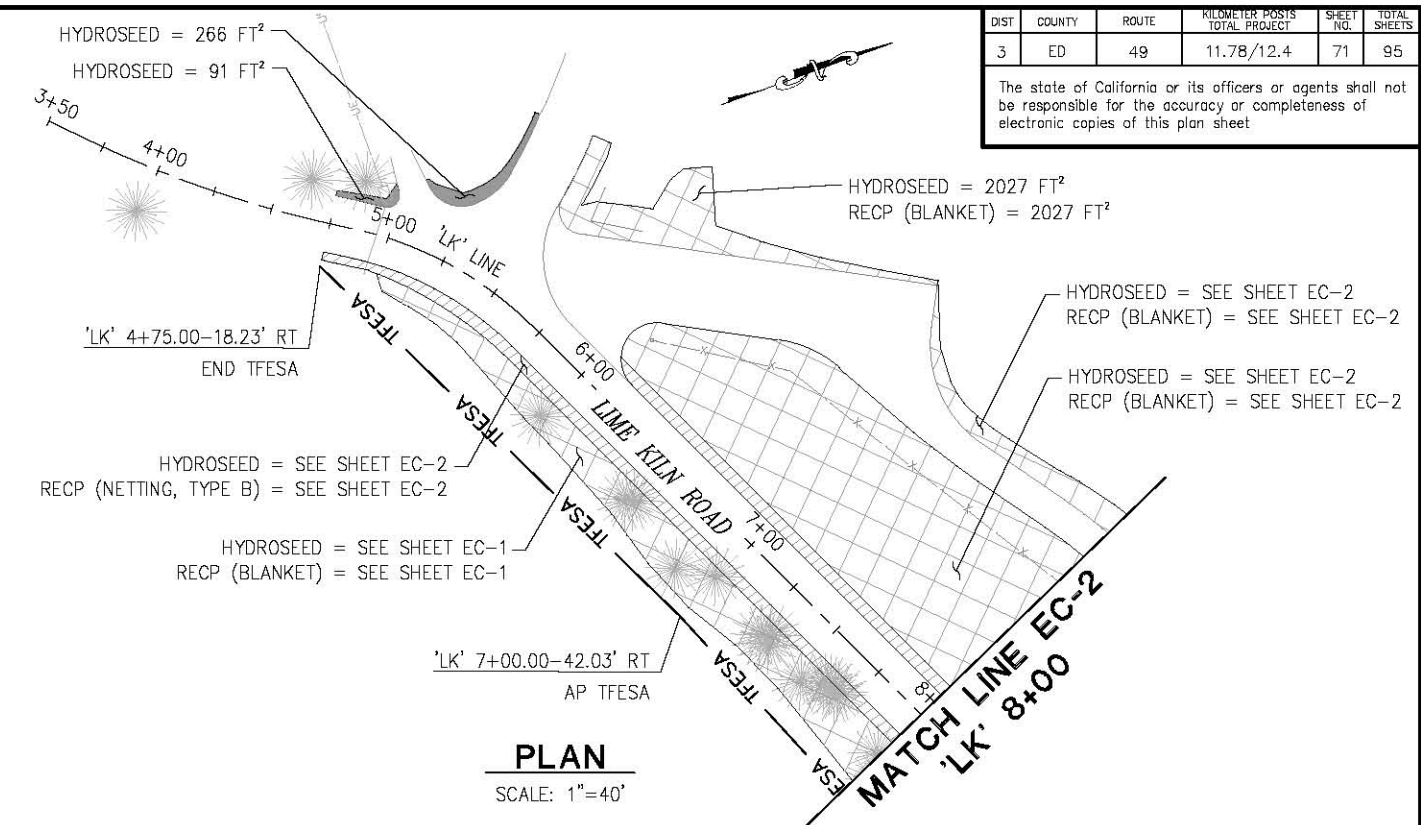
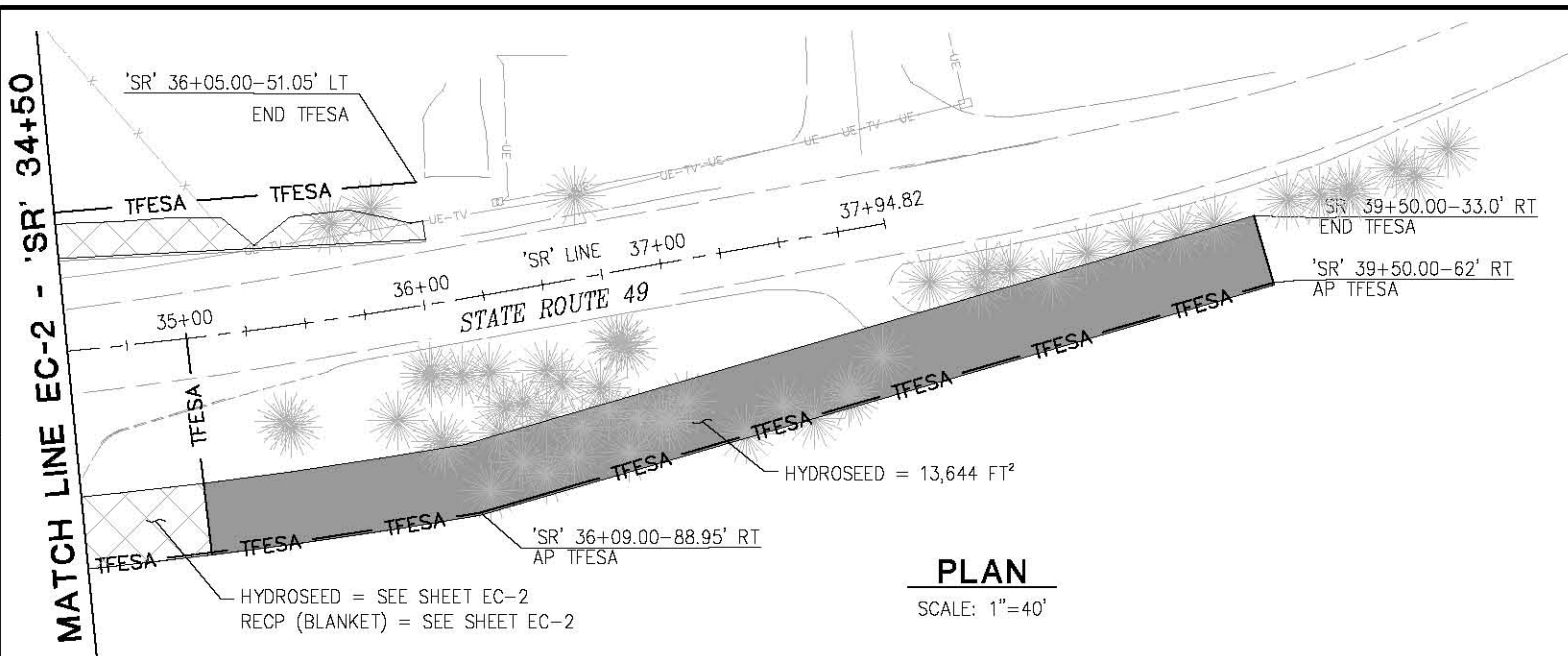
Note: Award will be based on the Base Bid (Schedule A) only.

(NOTICE: Bidders failure to execute the questionnaires and statements contained in this proposal as required by applicable laws and regulations, or the determinations by County of El Dorado based upon those questionnaires and statements, may prohibit award of the subject Contract to the bidder.)

ORIGINAL SCALE IS IN INCHES
Drawing name: C:\Civil 3D Projects\72334 Diamond Springs Parkway\CADD Files\Sheets\EC-1.dwg Layout Tab: EC-3 Feb 07, 2019 - 9:24am SMC/ky

DIST	COUNTY	ROUTE	KILOMETER POSTS TOTAL PROJECT	SHEET NO.	TOTAL SHEETS
3	ED	49	11.78/12.4	71	95

The state of California or its officers or agents shall not be responsible for the accuracy or completeness of electronic copies of this plan sheet



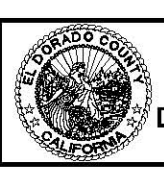
EROSION CONTROL QUANTITIES					
SHEET No.	RECP (NETTING, TYPE B)	RECP (BLANKET)	HYDROSEED	FIBER ROLLS	
	(SF)	(SF)	(SF)	(LF)	
EC-1		19,089	19,089		
	941	30,011	30,011		
	10,781		941		
			10,781		
			2,531		
			342		
SUBTOTAL EC-2	11,722	49,100	103,864		
			47		
			206		
			341		
			583		
			31,424	31,424	
SUBTOTAL EC-3			3,468	3,468	
			50,116	50,116	
			2,102	2,102	
			1,755	1,755	
			9,250	9,250	
			13,107	99,292	
SUBTOTAL EC-3		85,008	99,292		
			266		
SUBTOTAL		2,027	2,027		
		2,027	2,384		
APPENDIX D	STOCKPILE NO. 1		11,810	67,960	1,105 1,900
	STOCKPILE NO. 2		28,744	66,850	2,403 1,990
SUBTOTAL		0	40,554	136,800	3,508 3,890
TOTAL	24,829	136,135	342,340	3,508 3,890	
			246,094		

THIS SHEET ACCURATE FOR EROSION CONTROL WORK ONLY
SCALE: 1" = AS SHOWN

REVISION	NUMBER	DATE	DESCRIPTION	BY
	1	02/06/19	ADDENDUM #2 - STOCKPILES ADDED	DWH



PREPARED UNDER THE SUPERVISION OF:
Justin W. Harrington
REGISTERED CIVIL ENGINEER
DATE: 3/9/2018



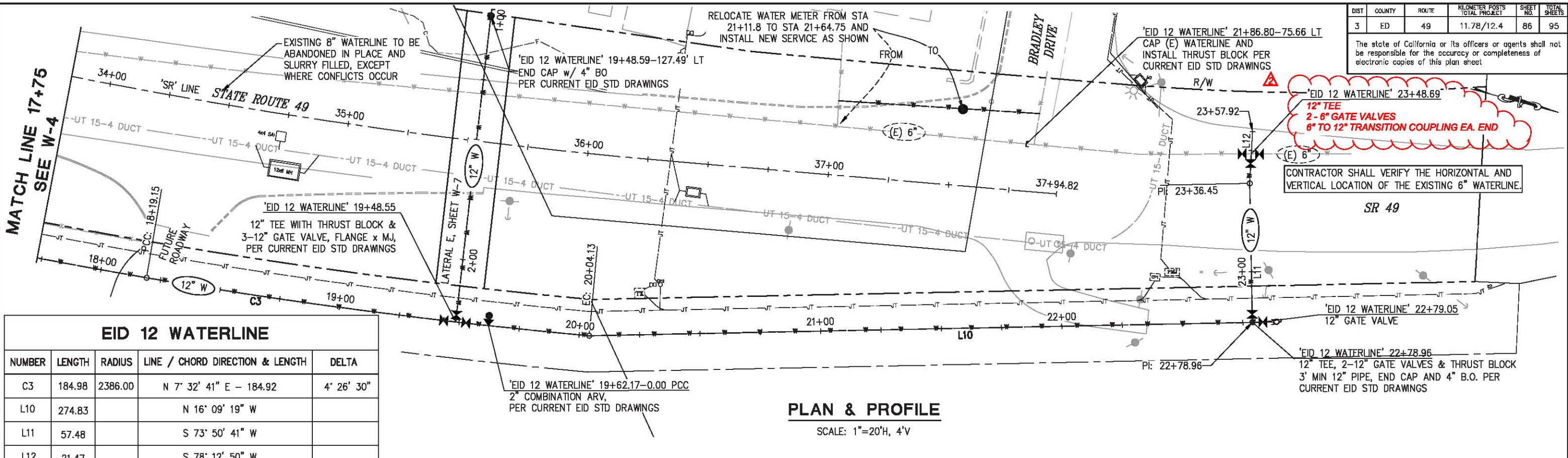
COUNTY OF EL DORADO
DEPARTMENT OF TRANSPORTATION

SR-49 REALIGNMENT -
DIAMOND SPRINGS PARKWAY
PHASE 1A

SHEET
EC-3
71 OF 95
W.O. No. 72375

DIST	COUNTY	ROUTE	KILOMETER POSTS TOTAL PROJECT	SHEET NO.	TOTAL SHEETS
3	ED	49	11.78/12.4	86	95

The State of California or its officers or agents shall not be responsible for the accuracy or completeness of electronic copies of this plan sheet.



EID 12 WATERLINE				
NUMBER	LENGTH	RADIUS	LINE / CHORD DIRECTION & LENGTH	DELTA
C3	184.98	2386.00	N 7° 32' 41" E - 184.92	4° 26' 30"
L10	274.83		N 16° 09' 19" W	
L11	57.48		S 73° 50' 41" W	
L12	21.47		S 78° 12' 50" W	

PLAN & PROFILE

SCALE: 1"=20'H, 4'V

NOTES

- MINIMUM 3' COVER OVER NEW WATERLINE TO FINISH GRADE OUTSIDE PAVEMENT.
- FROM WATERLINE STA 19+50 TO 19+80 AND STA 21+80 TO 22+20. DEFLECTION NOT TO EXCEED 4' PER JOINT OR MJ COUPLER.
- STATION/OFFSET CALLOUTS PER 'EID 12 WATERLINE' ALIGNMENT.

THIS SHEET ACCURATE FOR UTILITY WORK ONLY

EID WATERLINE PLAN
SCALE : AS NOTED

EFIS 0300000611 CU 00000 EA 03-0E960

REGISTERED PROFESSIONAL ENGINEER
DUSTIN W. HARRINGTON
No. C71517
License Expires 12-31-18
CIVIL
STATE OF CALIFORNIA

PREPARED UNDER THE SUPERVISION OF:
[Signature]
REGISTERED CIVIL ENGINEER
DATE: 3/9/2018

DESIGNED: DH
CHECKED: TEB
ROAD NUMBER: SR49

DRAWN: RR/AN
DATE: 3/5/2018



COUNTY OF EL DORADO
DEPARTMENT OF TRANSPORTATION

SR-49 REALIGNMENT -
DIAMOND SPRINGS PARKWAY
PHASE 1A

SHEET
W-5
86 OF 95
W.O. No. 72375

ORIGINAL SCALE IS IN INCHES
Drawing Name: C:\Civil 3D Projects\72375 Diamond Springs Parkway\CAD\Files\Sheets\W-2.dwg Layout Tab: W-5 Mar 15, 2018 10:32am An Nguyen
FOR REDUCED PLANS