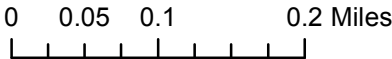


**P17-001-C Wyckoff Easement Abandonment:
 Subdivision Map Correction
 Exhibit A**



MAP OF STRAWBERRY HEIGHTS SUBDIVISION

2017 JUL -5 AM 8:10

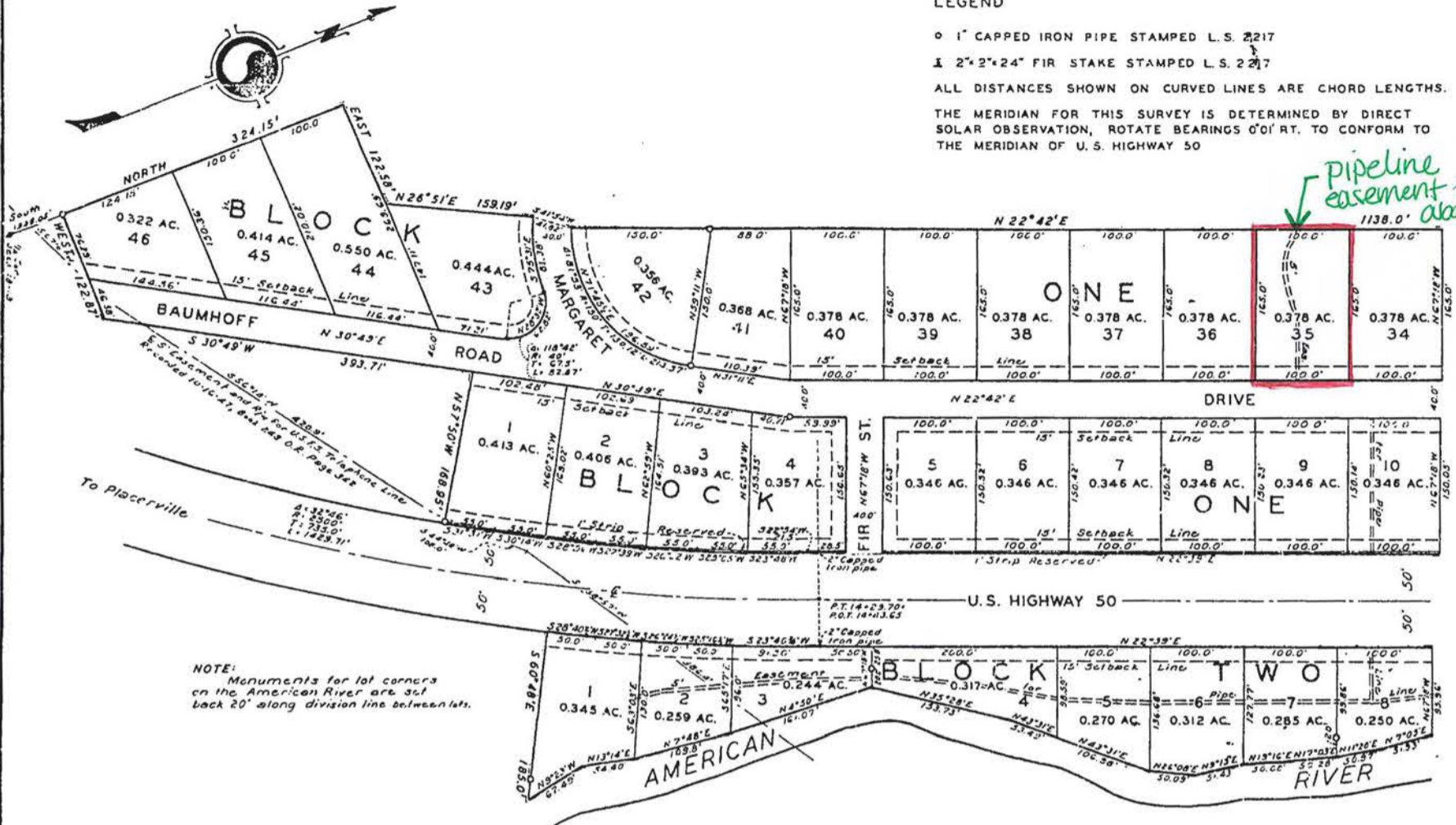
RECEIVED
PLANNING DEPARTMENT

SECTION 18 T.11N. R.17E. M.D.B.&M.
EL DORADO COUNTY, CALIFORNIA.
SCALE: 1" = 100'

NORMAN B. BAILIFF. LAND SURVEYOR.

LEGEND

- 1" CAPPED IRON PIPE STAMPED L.S. 2217
- ┆ 2" x 2" x 24" FIR STAKE STAMPED L.S. 2217
- ALL DISTANCES SHOWN ON CURVED LINES ARE CHORD LENGTHS.
- THE MERIDIAN FOR THIS SURVEY IS DETERMINED BY DIRECT SOLAR OBSERVATION, ROTATE BEARINGS 0° OF RT. TO CONFORM TO THE MERIDIAN OF U.S. HIGHWAY 50



NOTE: Monuments for lot corners on the American River are set back 20' along division line between lots.

We the undersigned, hereby consent to the preparation of this map of STRAWBERRY HEIGHTS SUBDIVISION and offer for dedication and do hereby dedicate to any and all Public Uses all the Roads, Streets, and Drives shown thereon.

Otto Schaefer
Margarite Schaefer

Pursuant to a resolution adopted by the board of Supervisors of the County of El Dorado, State of California, April 6, 1926, requiring that all maps and plats of subdivisions that border or include any portion of any State Highway shall be submitted to the State Highway Engineer of the State of California, I hereby certify the map of STRAWBERRY HEIGHTS SUBDIVISION has been submitted to and examined by me and is hereby approved insofar as its contact with the State Highway is concerned.

G.T. McCoy
STATE HIGHWAY ENGINEER
BY *Chas. L. Thomas*
DISTRICT ENGINEER, DISTRICT III
CALIFORNIA HIGHWAY COMMISSION

I hereby certify that this map of STRAWBERRY HEIGHTS SUBDIVISION is a true representation of a survey made under my direction in November, 1946, that the monuments are of the character and occupy the positions indicated and that said monuments are sufficient to enable the survey to be retraced.
DATED May 6, 1947

Norman B. Bailiff
LICENSED LAND SURVEYOR NO. 2217

I, ELMER J. KENT, hereby certify that I have examined this map of STRAWBERRY HEIGHTS SUBDIVISION and find it to be substantially correct, that all the provisions of the Subdivision Map Act and all County Ordinances have been complied with.

Elmer J. Kent
COUNTY SURVEYOR OF EL DORADO CO.

We hereby certify that the Board of Supervisors of the County of El Dorado, State of California, has accepted in behalf of the Public all the lands hereby offered for dedication, reserving the right to refuse to maintain the roads until said roads are constructed in accordance with the El Dorado County Ordinance governing the dedication of roads and has hereby approved this map of STRAWBERRY HEIGHTS SUBDIVISION.
DATED May 6, 1947

W. B. Bredlow
CHAIRMAN OF THE BOARD OF SUPERVISORS OF EL DORADO COUNTY
Arthur J. Koletzke
CLERK OF THE BOARD OF SUPERVISORS OF EL DORADO COUNTY

Accepted for record and recorded in the office of the County Recorder of El Dorado County in Book A of Maps, Map No. 80, this 18th day of August, 1947, at 2:33 min. P.M.
Inter-County Title Co. Certificate No. 11212
DATED Aug. 18, 1947

James W. Swenson
COUNTY RECORDER OF EL DORADO CO.

No. 3493

P 17-0001-C

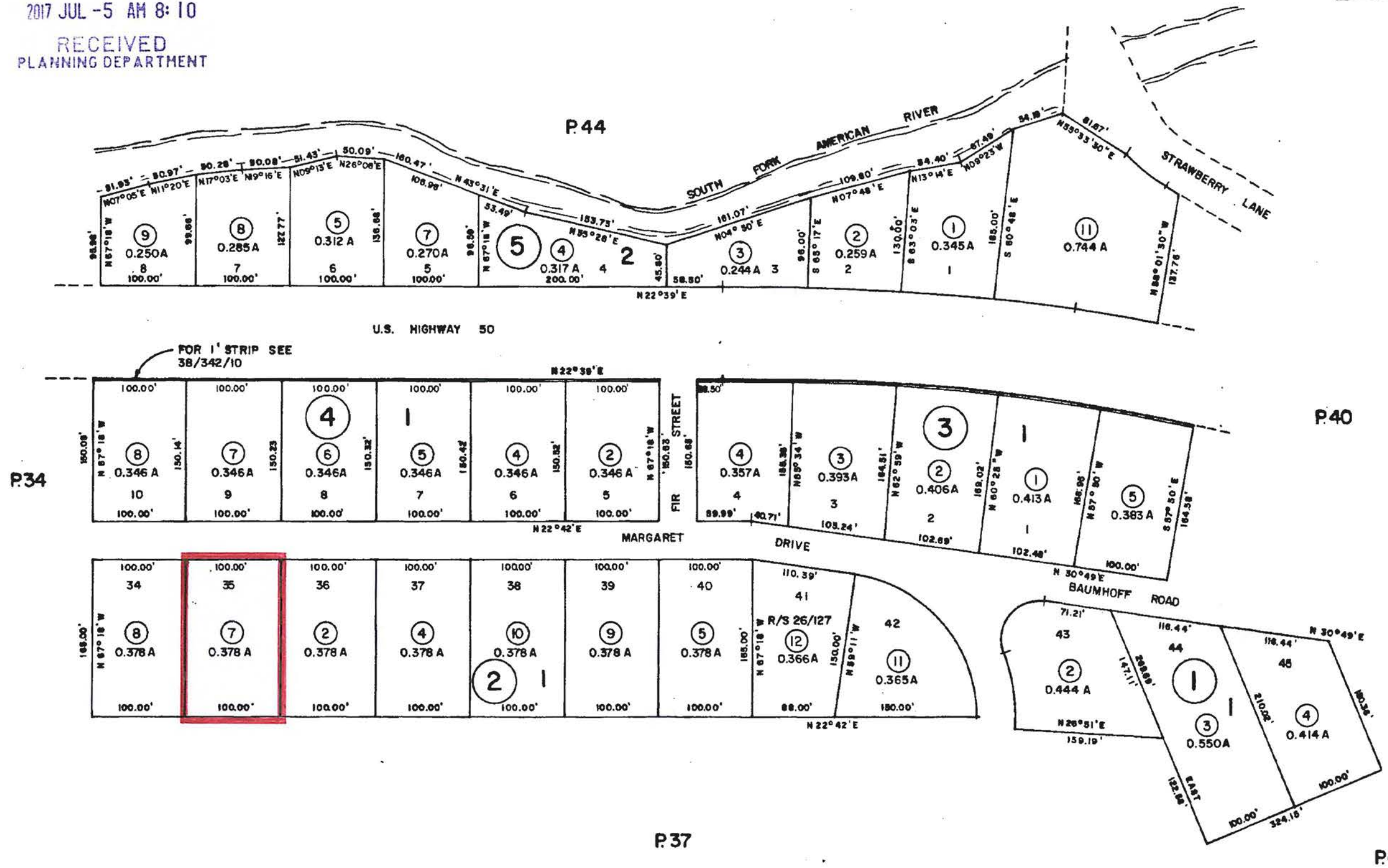
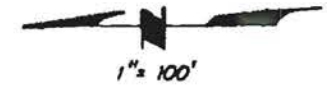
POR. SEC. 18, T.11N., R.17E., M.D.M.
 STRAWBERRY HEIGHTS SUBD.
 A-80

Tax Area Code

38:35

2017 JUL -5 AM 8:10

RECEIVED
 PLANNING DEPARTMENT



P 17-0001-C

THIS MAP IS NOT A SURVEY, It is prepared by the El Dorado Co. Assessor's office for assessment purposes only.

NOTE - Assessor's Block Numbers Shown in Ellipses
 Assessor's Parcel Numbers Shown in Circles

Assessor's Map Bk., 38 - Pg. 35
 County of El Dorado, California

MAR 28 2005 18-0661 D 3 of 7

Exhibit C



**P17-0001-C Wyckoff Easement Abandonment:
Subdivision Map Correction
Exhibit D: Aerial Photo**

0 0.0175 0.035 0.07 Miles



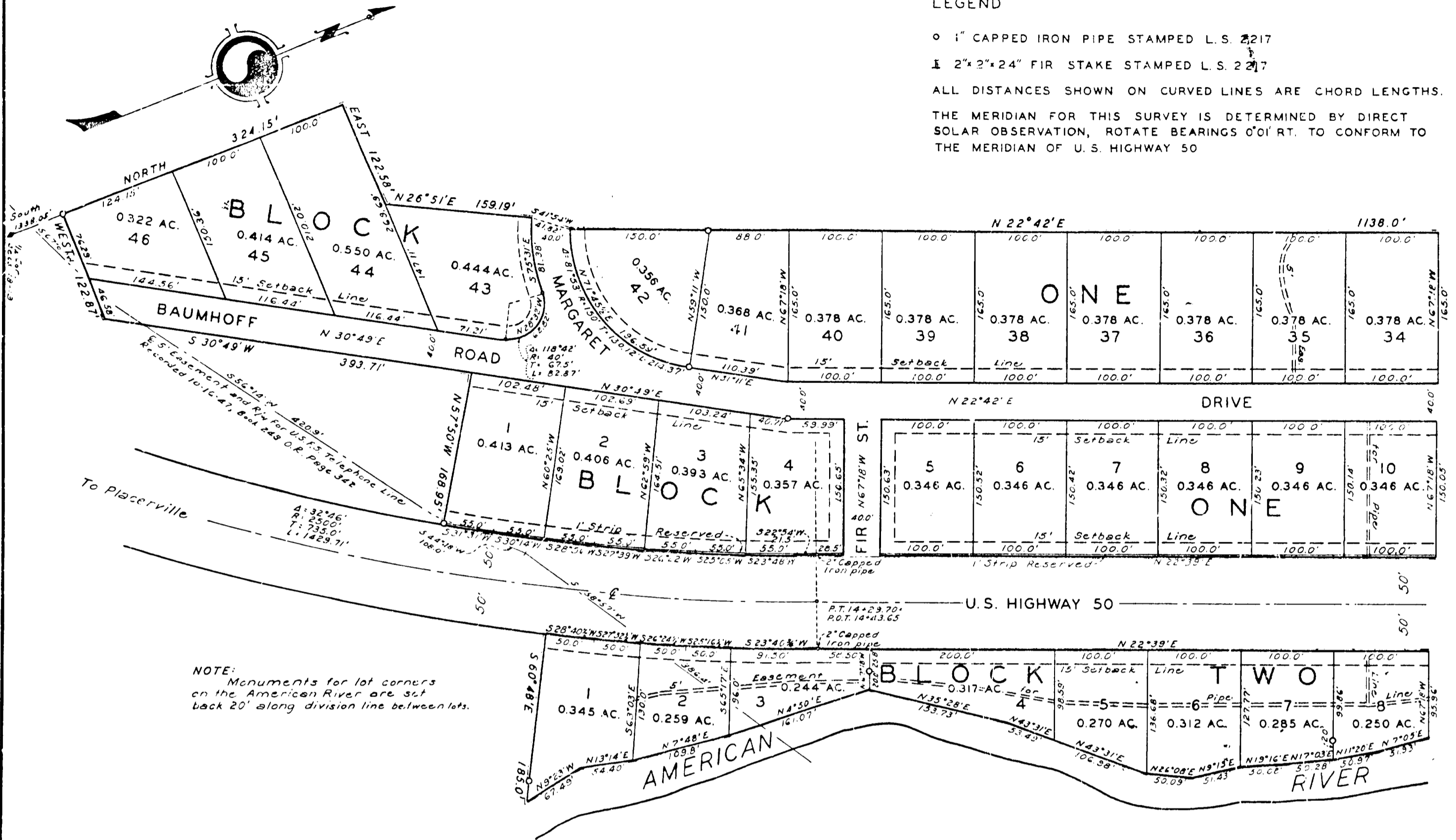
MAP OF STRAWBERRY HEIGHTS SUBDIVISION

SECTION 18 T.11N. R.17E. M.D.B.&M.
EL DORADO COUNTY, CALIFORNIA.
SCALE: 1" = 100'
APRIL, 1947.

NORMAN B. BAILIFF, LAND SURVEYOR.

LEGEND

- 1" CAPPED IRON PIPE STAMPED L.S. 2217
- ⊥ 2"x2"x24" FIR STAKE STAMPED L.S. 2217
- ALL DISTANCES SHOWN ON CURVED LINES ARE CHORD LENGTHS.
- THE MERIDIAN FOR THIS SURVEY IS DETERMINED BY DIRECT SOLAR OBSERVATION, ROTATE BEARINGS 0'01" RT. TO CONFORM TO THE MERIDIAN OF U.S. HIGHWAY 50



NOTE: Monuments for lot corners on the American River are set back 20' along division line between lots.

We the undersigned, hereby consent to the preparation of this map of STRAWBERRY HEIGHTS SUBDIVISION and offer for dedication and do hereby dedicate to any and all Public Uses all the Roads, Streets, and Drives shown thereon.

Otto Schaefer
Margarite Schaefer

Pursuant to a resolution adopted by the board of Supervisors of the County of El Dorado, State of California, April 6, 1926, requiring that all maps and plats of subdivisions that border or include any portion of any State Highway shall be submitted to the State Highway Engineer of the State of California, I hereby certify the map of STRAWBERRY HEIGHTS SUBDIVISION has been submitted to and examined by me and is hereby approved insofar as its contact with the State Highway is concerned.

G.T.M. Co. STATE HIGHWAY ENGINEER
BY *C.H. Whitmore*
DISTRICT ENGINEER, DISTRICT III
CALIFORNIA HIGHWAY COMMISSION

I hereby certify that this map of STRAWBERRY HEIGHTS SUBDIVISION is a true representation of a survey made under my direction in November, 1946, that the monuments are of the character and occupy the positions indicated and that said monuments are sufficient to enable the survey to be retraced.
DATED May 6, 1947

Norman B. Bailiff
LICENSED LAND SURVEYOR NO. 2217

I, ELMER J. KENT, hereby certify that I have examined this map of STRAWBERRY HEIGHTS SUBDIVISION and find it to be substantially correct, that all the provisions of the Subdivision Map Act and all County Ordinances have been complied with.

Elmer J. Kent
COUNTY SURVEYOR OF EL DORADO CO.

STATE OF CALIFORNIA } ss
County of El Dorado } ss
On this day of May, 1947, in the year one thousand nine hundred forty seven, before me, THOMAS MAUL, a Notary Public in and for the County of El Dorado, State of California, residing therein, duly commissioned and sworn, appeared OTTO SCHAEFER and MARGARET SCHAEFER his wife, known to me to be the persons whose names are subscribed to the within instrument and acknowledged to me that they executed the same.
IN WITNESS WHEREOF I have hereunto set my hand and affixed my official seal in Placerville, California, the day and year first above written.

Thomas Maul
NOTARY PUBLIC
In and for said County and State

STATE OF CALIFORNIA } ss
County of El Dorado } ss
I, E. L. SCOTT, Assessor of the County of El Dorado, State of California, hereby certify that I have examined each and every lot delineated on the map entitled STRAWBERRY HEIGHTS SUBDIVISION, accompanying this certificate as to its value for commercial or residential purposes and state that they are adapted for the same and hereby recommend that said map be approved.

E. L. Scott
COUNTY ASSESSOR OF EL DORADO CO.

I, ARTHUR J. KOLETZKE, Auditor of the County of El Dorado, State of California, hereby certify that there are no liens for unpaid State, County, Municipal or local taxes or special assessments payable against the land embraced within the boundaries of STRAWBERRY HEIGHTS SUBDIVISION or any part thereof as the same is shown and delineated on the map accompanying this certificate and I hereby certify that there are no special assessments against any portion of said land and estimate the amount of taxes levied upon said land but not yet payable in the sum of \$100.⁰⁰
IN WITNESS WHEREOF I have hereunto set my hand and affixed my official seal in the office of the County Auditor of El Dorado County, State of California, this 6th day of May, 1947.

Arthur J. Koletzke
COUNTY AUDITOR OF EL DORADO CO.

We hereby certify that the Board of Supervisors of the County of El Dorado, State of California, has accepted in behalf of the Public all the lands hereby offered for dedication, reserving the right to refuse to maintain the roads until said roads are constructed in accordance with the El Dorado County Ordinance governing the dedication of roads and has hereby approved this map of STRAWBERRY HEIGHTS SUBDIVISION.
DATED May 6, 1947

W. H. Bredlow
CHAIRMAN OF THE BOARD OF SUPERVISORS OF EL DORADO COUNTY
Arthur J. Koletzke
CLERK OF THE BOARD OF SUPERVISORS OF EL DORADO COUNTY

Accepted for record and recorded in the office of the County Recorder of El Dorado County in Book A of Maps, Map No. 60, this 16th day of August, 1947, at 12:33 min. P.M.
Inter-County Title Co. Certificate No. 11912
DATED Aug 16 1947

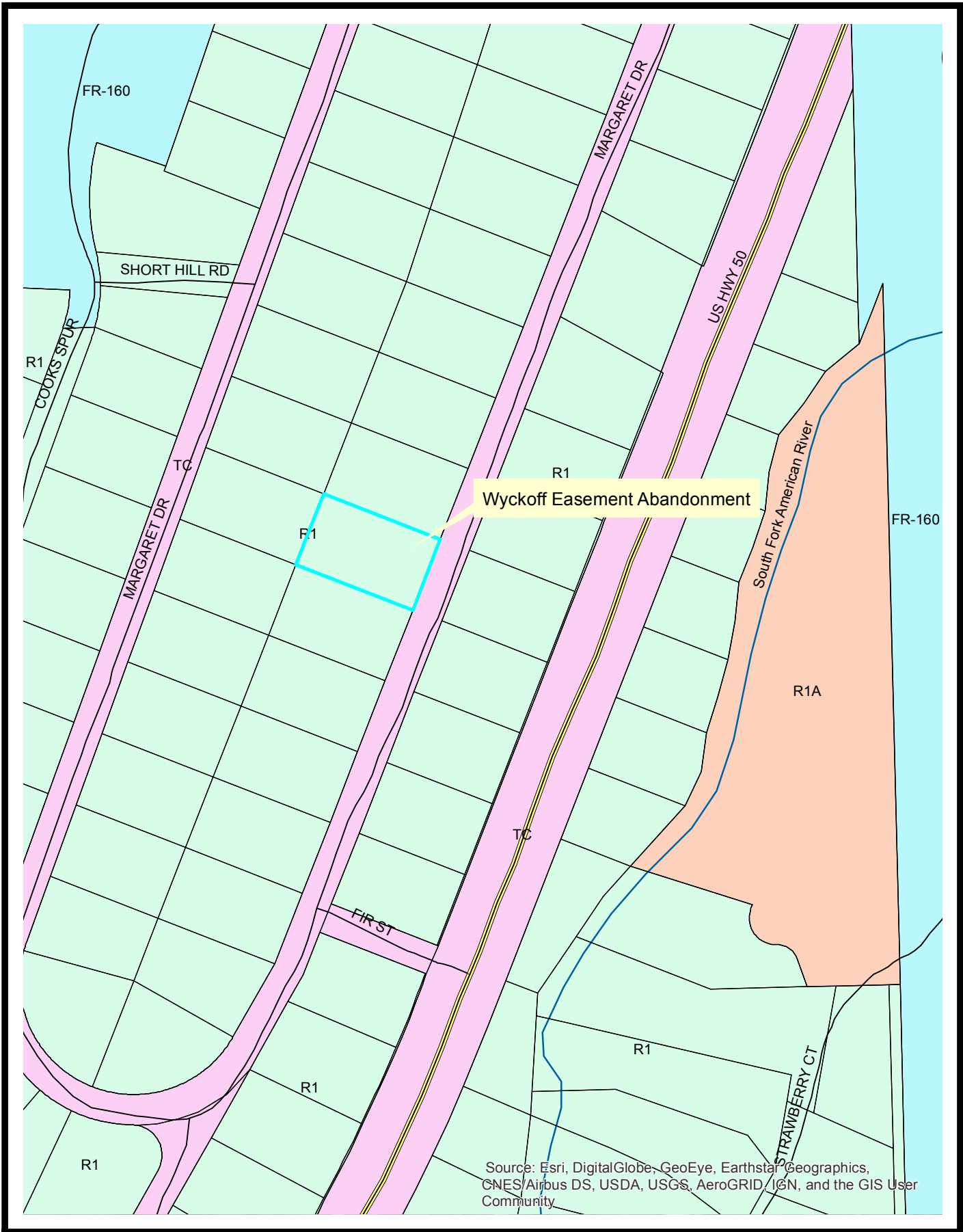
James W. Lawrence
COUNTY RECORDER OF EL DORADO CO.



**P17-0001-C Wyckoff Easement Abandonment:
Subdivision Map Correction
Exhibit F: Land Use Map**

0 0.0175 0.035 0.07 Miles

N
18-0661 D 6 of 7



**P17-0001-C Wyckoff Easement Abandonment:
 Subdivision Map Correction
 Exhibit G: Zoning Map**

