

CUP23-0010/EDH VERIZON WIRELESS TELECOMMUNICATIONS FACILITY
EXHIBIT F - SITE PLAN (UPDATED)

APN: 117-084-004-000

APN: 117-057-010-000

CARSON CROSSING DRIVE

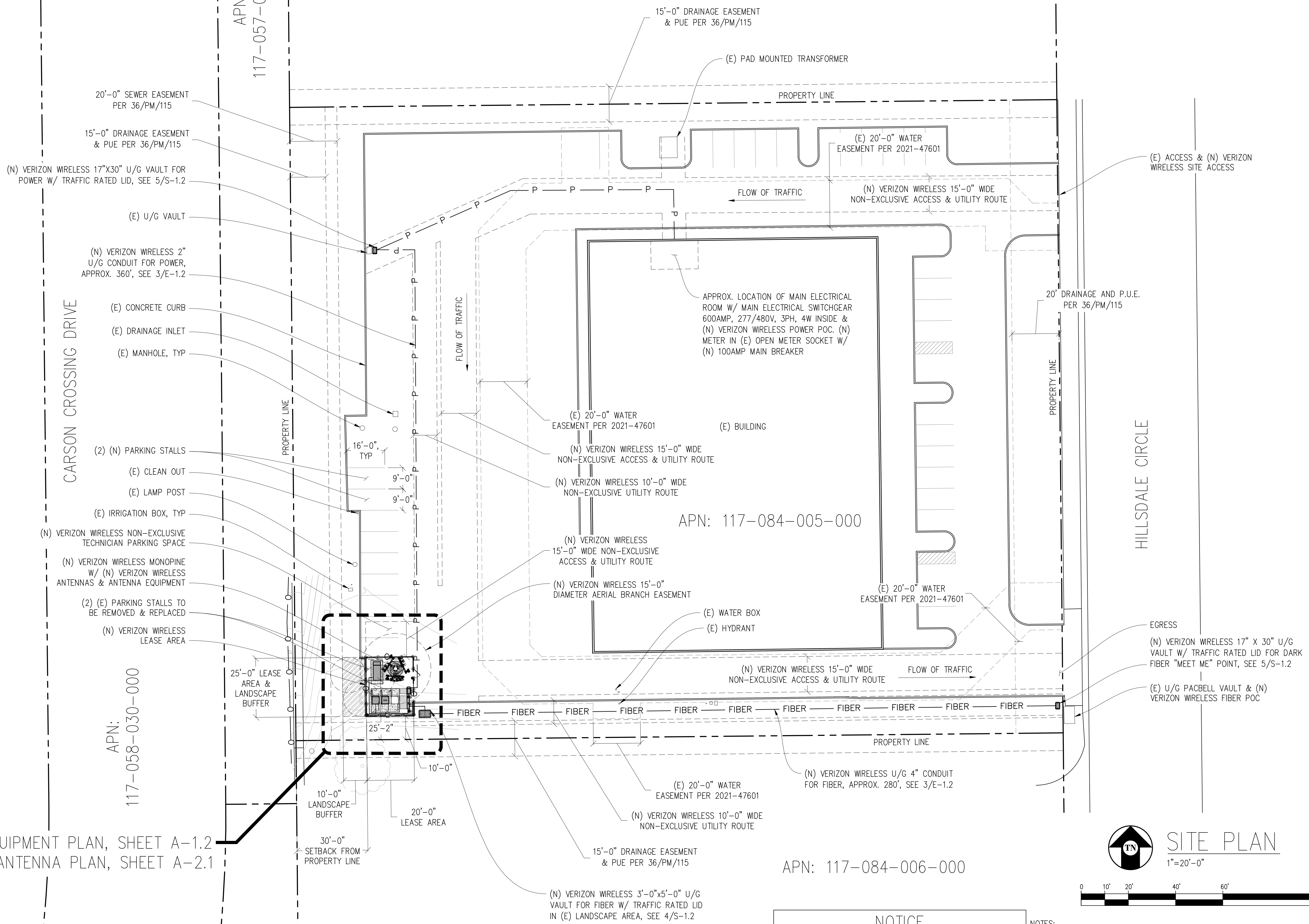
HILLSDALE CIRCLE

APN: 117-084-005-000

APN: 117-084-006-000

APN: 117-058-030-000

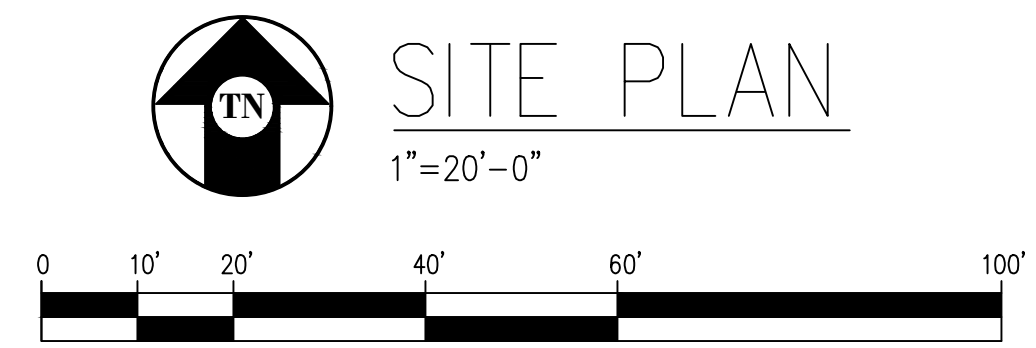
SEE EQUIPMENT PLAN, SHEET A-1.2
& ANTENNA PLAN, SHEET A-2.1



NOTICE

NEW MONOPINE TO BE ANALYZED BY OTHERS. STREAMLINE ENGINEERING & DESIGN INC. IS NOT RESPONSIBLE FOR THE EVALUATION OF THE NEW MONOPINE, BASE PLATE, ANCHOR BOLTS, FOUNDATION OR ANTENNA/RRU MOUNT FRAMING & CONNECTIONS FOR NEW LOADING CONDITIONS.

- NOTES:
1. REROUTE & FIX ALL IRRIGATION LINES IN AREA OF (N) VERIZON WIRELESS LEASE AREA
 2. ALL LTE ANTENNAS, ANTENNA MOUNTS, ANTENNA EQUIPMENT, & EXPOSED CABLES TO BE PAINTED TO MATCH (N) MONOPINE & BE FULLY WITHIN THE BRANCH RADIUS
 3. AIR ANTENNAS TO BE COVERED IN 3M FILM ***DO NOT PAINT AIR ANTENNAS***
 4. ALL ANTENNAS TO BE COVERED IN MONOPINE SOCKS



Issued For:
GOLDEN FOOTHILLS
4994 HILLSDALE CIRCLE
EL DORADO HILLS, CA 94585

PREPARED FOR
verizon
2770 SHADELANDS DR, BLDG 11
WALNUT CREEK, CA 94598

Vendor:
EPIC WIRELESS GROUP LLC
Connecting a Wireless World

MDG LOCATION ID: 5000063898
PROJECT ID: 16870411
DRAWN BY: C. CODY
CHECKED BY: J. GRAY
APPROVED BY: J. SPORE

ISSUE STATUS				
REV	DATE	DESCRIPTION	CAD	
3	11/30/23	CD 100%	S.D.	
2	10/02/23	CD 95%	C.T.C	
1	09/13/23	CLIENT REV	C.T.C	
0	07/13/23	CD 90%	C.C.	

Licensee:

IT IS A VIOLATION OF LAW FOR ANY PERSON, UNLESS THEY ARE ACTING UNDER THE DIRECTION OF A LICENSED PROFESSIONAL ENGINEER, TO ALTER THIS DOCUMENT.

ENGINEER:
Streamline Engineering
8445 Sierra College Blvd, Suite E Granite Bay, CA 95746
Contact: Kevin Sporensen Phone: 916-660-1930
E-Mail: kevin@streamlineeng.com Fax: 916-660-1941
THESE PLANS AND SPECIFICATIONS ARE INSTRUMENTS OF SERVICE, AND SHALL REMAIN THE PROPERTY OF STREAMLINE ENGINEERING AND DESIGN INC. NO PART OF THESE PLANS OR SPECIFICATIONS SHALL BE REPRODUCED OR TRANSMITTED IN ANY FORM OR BY ANY MEANS, ELECTRONIC OR MECHANICAL, INCLUDING PHOTOCOPYING, RECORDING, OR BY ANY INFORMATION STORAGE AND RETRIEVAL SYSTEM, WITHOUT THE WRITTEN PERMISSION OF STREAMLINE ENGINEERING AND DESIGN INC. ALL RIGHTS RESERVED. Copyright © 2024 STREAMLINE ENGINEERING AND DESIGN INC.

SHEET TITLE:
OVERALL SITE PLAN

SHEET NUMBER:
A-1.1