

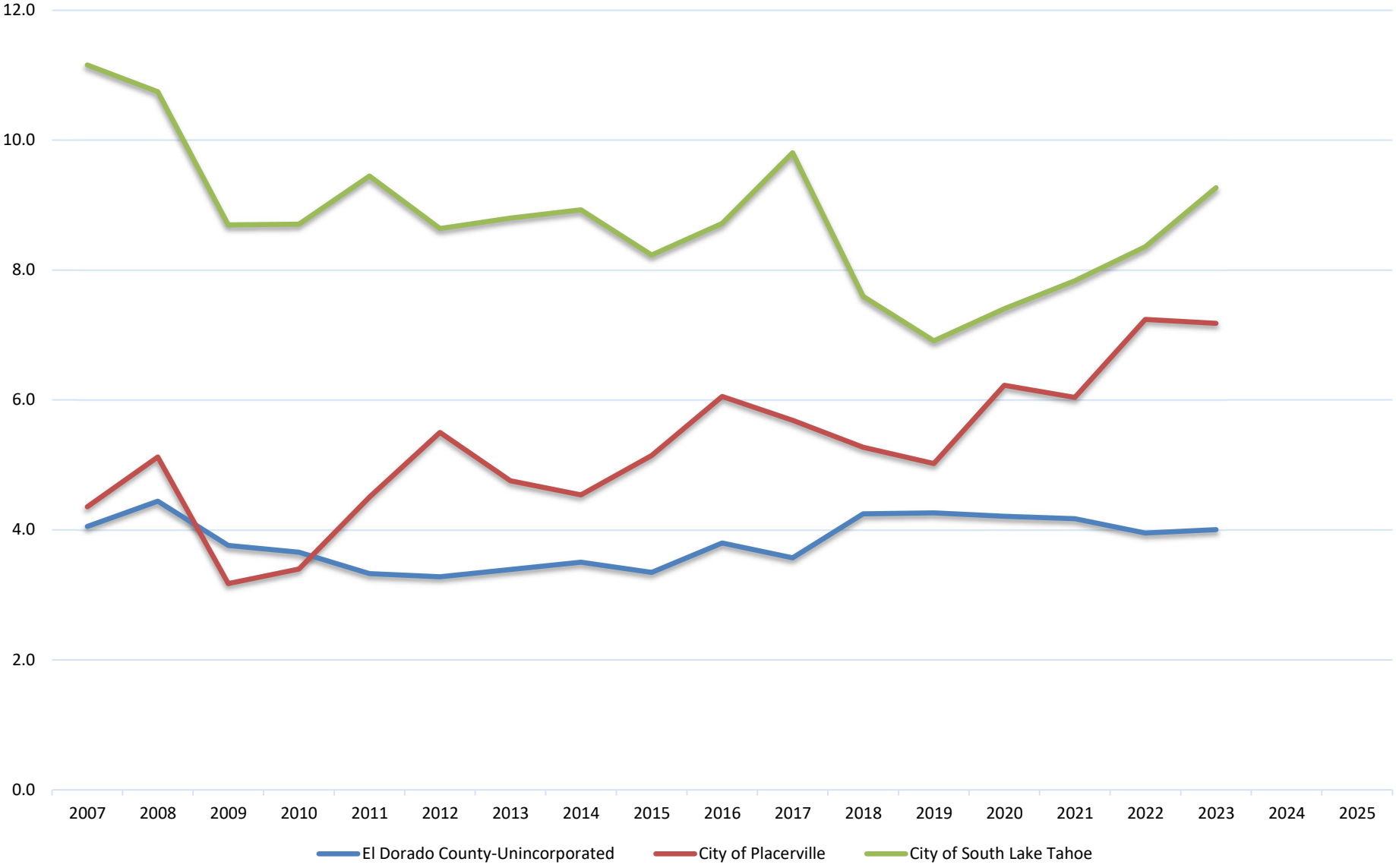
El Dorado County SW Summary

El Dorado County-Unincorporated										
Year	Tons	Population	Employment	P:E Ratio	PPD	PPD Target	PPD (emp)	PPD Target (emp)	% Diversion	% Diversion (emp)
2007	106454.00	143997	32412	4.44	4.1	5.3	18.0	23.2	61.78%	61.21%
2008	117307.07	144689	32947	4.39	4.4	5.3	19.5	23.2	58.09%	57.95%
2009	100150.18	145916	30620	4.77	3.8	5.3	17.9	23.2	64.52%	61.38%
2010	99374.40	148965	25972	5.74	3.7	5.3	21.0	23.2	65.52%	54.82%
2011	91373.91	150489	27706	5.43	3.3	5.3	18.1	23.2	68.61%	61.05%
2012	89194.27	149000	27936	5.33	3.3	5.3	17.5	23.2	69.06%	62.30%
2013	93001.92	150347	28929	5.20	3.4	5.3	17.6	23.2	68.02%	62.04%
2014	96123.95	150468	32848	4.58	3.5	5.3	16.0	23.2	66.98%	65.44%
2015	93138.21	152506	32769	4.65	3.3	5.3	15.6	23.2	68.43%	66.44%
2016	105759.26	152614	34150	4.47	3.8	5.3	17.0	23.2	64.18%	63.43%
2017	100688.06	154587	35993	4.29	3.6	5.3	15.3	23.2	66.33%	66.96%
2018	121096.75	156317	37029	4.22	4.2	5.3	17.9	23.2	59.95%	61.38%
2019	123018.72	158131	38039	4.16	4.3	5.3	17.7	23.2	59.79%	61.81%
2020	122353.76	159345	36356	4.38	4.2	5.3	18.4	23.2	60.31%	60.26%
2021	121021.73	158910	36600	4.34	4.2	5.3	18.1	23.2	60.63%	60.95%
2022	114271.39	158468	38670	4.10	4.0	5.3	16.2	23.2	62.72%	65.10%
2023	114543.00	156837	37975	4.13	4.0	5.3	16.5	23.2	62.25%	64.38%
2024										
2025										

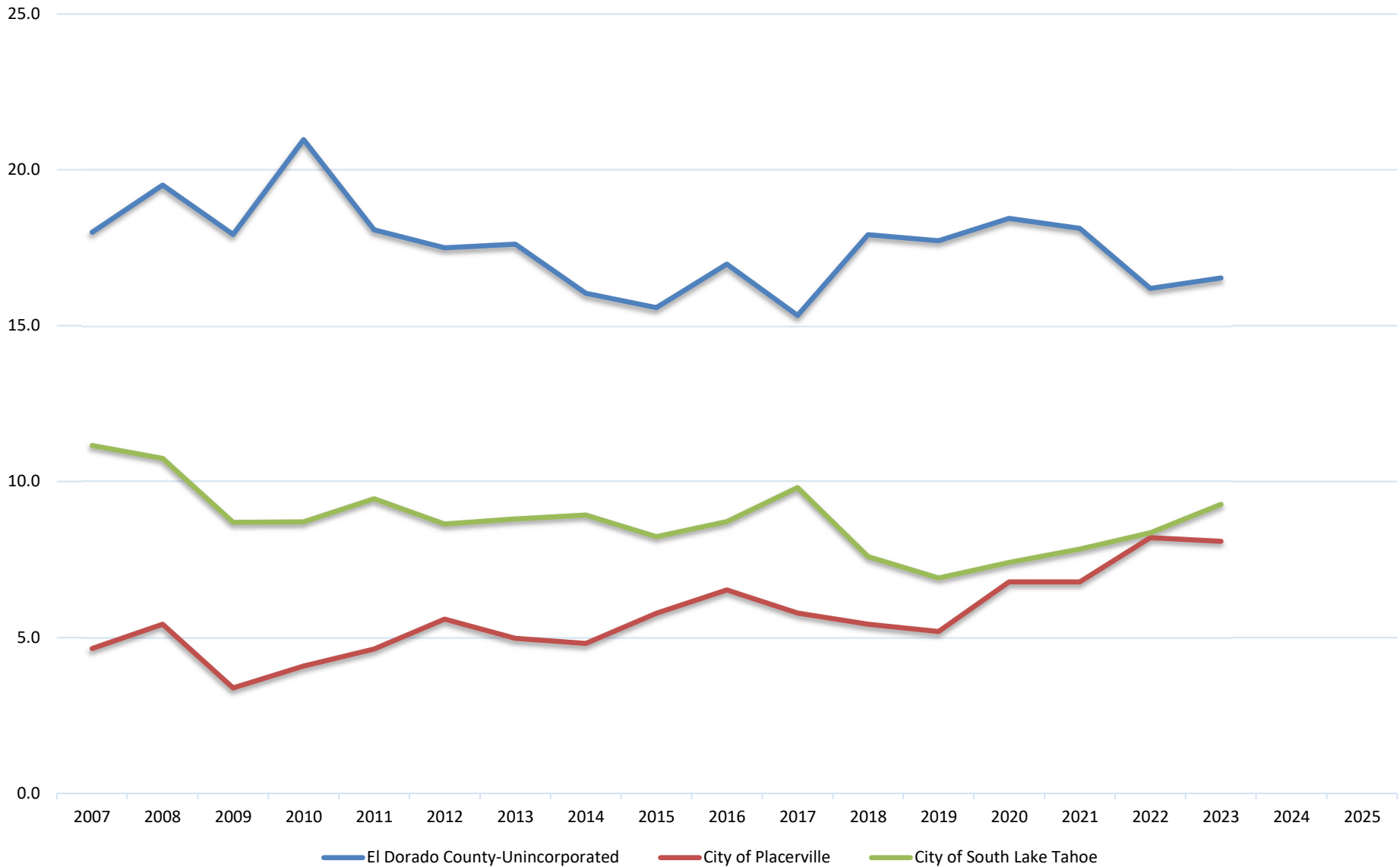
City of Placerville											
Year	Tons	Population	Employment	P:E Ratio	PPD	PPD Target	PPD (emp)	PPD Target (emp)	% Diversion	% Diversion (emp)	
2007	8098.22	10187	9554	1.07	4.4	6.9	4.6	10.3	68.44%	77.45%	
2008	9651.08	10321	9740	1.06	5.1	6.9	5.4	10.3	62.87%	73.64%	
2009	6010.29	10373	9721	1.07	3.2	6.9	3.4	10.3	76.99%	83.55%	
2010	6430.02	10371	8620	1.20	3.4	6.9	4.1	10.3	75.38%	80.16%	
2011	8594.00	10452	10177	1.03	4.5	6.9	4.6	10.3	67.35%	77.54%	
2012	10406.93	10369	10197	1.02	5.5	6.9	5.6	10.3	60.15%	72.85%	
2013	9062.00	10441	9989	1.05	4.8	6.9	5.0	10.3	65.54%	75.87%	
2014	8719.25	10527	9932	1.06	4.5	6.9	4.8	10.3	67.11%	76.65%	
2015	9984.00	10637	9471	1.12	5.1	6.9	5.8	10.3	62.73%	71.96%	
2016	11795.66	10679	9908	1.08	6.1	6.9	6.5	10.3	56.14%	68.33%	
2017	10967.22	10568	10394	1.02	5.7	6.9	5.8	10.3	58.79%	71.93%	
2018	10372.12	10784	10472	1.03	5.3	6.9	5.4	10.3	61.81%	73.65%	
2019	10003.51	10917	10557	1.03	5.0	6.9	5.2	10.3	63.62%	74.80%	
2020	12458.45	10964	10061	1.09	6.2	6.9	6.8	10.3	54.88%	67.06%	
2021	11717.99	10636	9466	1.12	6.0	6.9	6.8	10.3	56.25%	67.07%	
2022	14036.82	10621	9378	1.13	7.2	6.9	8.2	10.3	47.52%	60.19%	
2023	13792.24	10527	9349	1.13	7.2	6.9	8.1	10.3	47.98%	60.76%	
2024											
2025											

City of South Lake Tahoe										
Year	Tons	Population	Employment	P:E Ratio	PPD	PPD Target	PPD (emp)	PPD Target (emp)	% Diversion	% Diversion (emp)
2007	48021.50	23582	9576	2.46	11.2	9.4	27.5	24.4	40.65%	43.69%
2008	46767.15	23850	9481	2.52	10.7	9.4	27.0	24.4	42.85%	44.61%
2009	37922.88	23896	9139	2.61	8.7	9.4	22.7	24.4	53.75%	53.41%
2010	33916.75	21346	7748	2.76	8.7	9.4	24.0	24.4	53.69%	50.85%
2011	37160.89	21557	8766	2.46	9.4	9.4	23.2	24.4	49.76%	52.40%
2012	33643.60	21343	9210	2.32	8.6	9.4	20.0	24.4	54.06%	58.98%
2013	34523.78	21498	8880	2.42	8.8	9.4	21.3	24.4	53.19%	56.35%
2014	34882.97	21409	9124	2.35	8.9	9.4	20.9	24.4	52.51%	57.07%
2015	32651.00	21738	8754	2.48	8.2	9.4	20.4	24.4	56.22%	58.12%
2016	33530.57	21078	9195	2.29	8.7	9.4	20.0	24.4	53.63%	59.05%
2017	37702.83	21068	9291	2.27	9.8	9.4	22.2	24.4	47.84%	54.44%
2018	31168.55	22491	9496	2.37	7.6	9.4	18.0	24.4	59.61%	63.15%
2019	28757.38	22800	9529	2.39	6.9	9.4	16.5	24.4	63.24%	66.11%
2020	31360.89	23210	8803	2.64	7.4	9.4	19.5	24.4	60.62%	60.00%
2021	30753.54	21508	8679	2.48	7.8	9.4	19.4	24.4	58.33%	60.21%
2022	31614.85	20727	8928	2.32	8.4	9.4	19.4	24.4	55.54%	60.24%
2023	35009.31	20703	10264	2.02	9.3	9.4	18.7	24.4	50.71%	61.70%
2024										
2025										

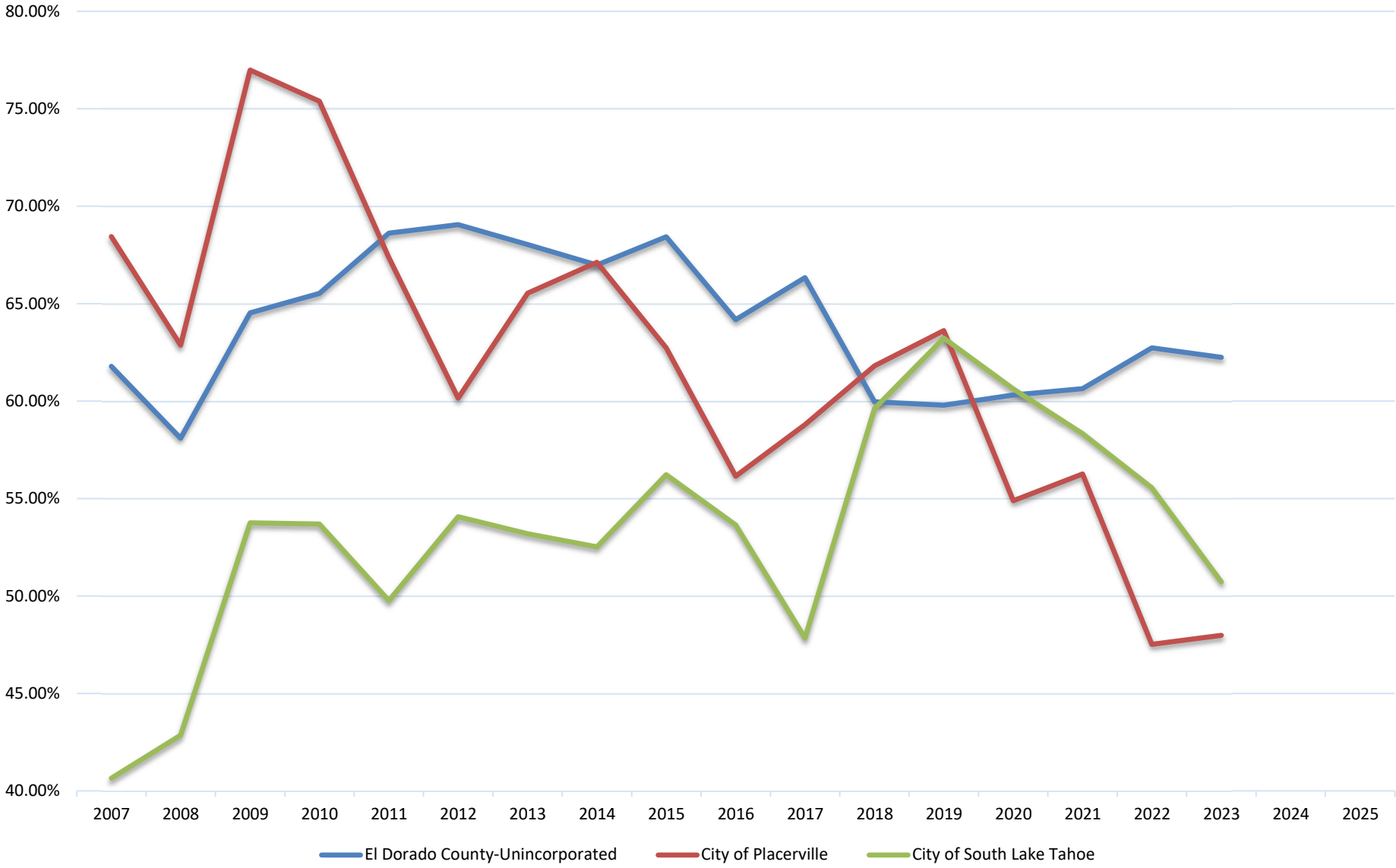
Pounds Per Person Per Day (PPD)



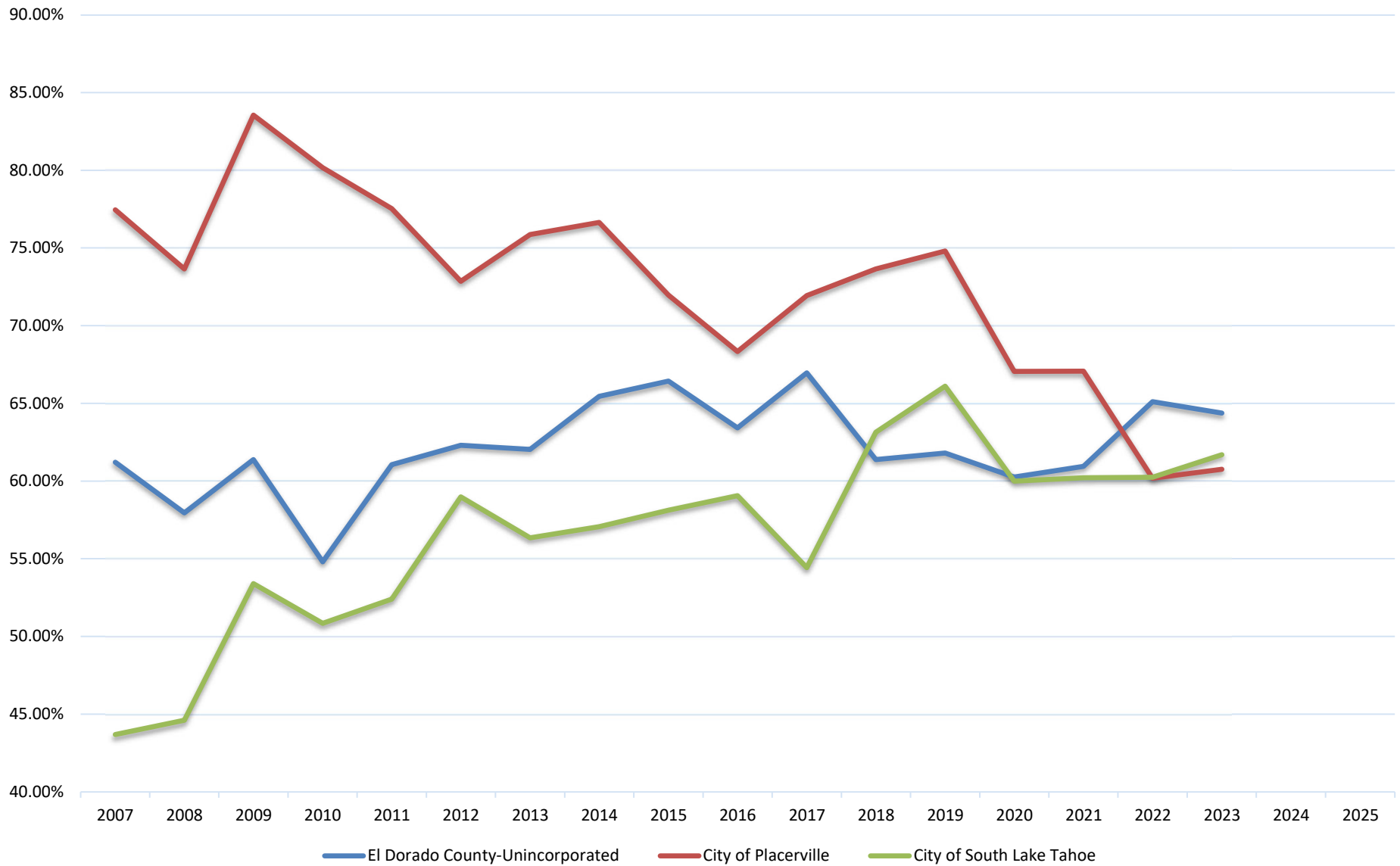
Pounds Per Person Per Day (PPD) - Employment



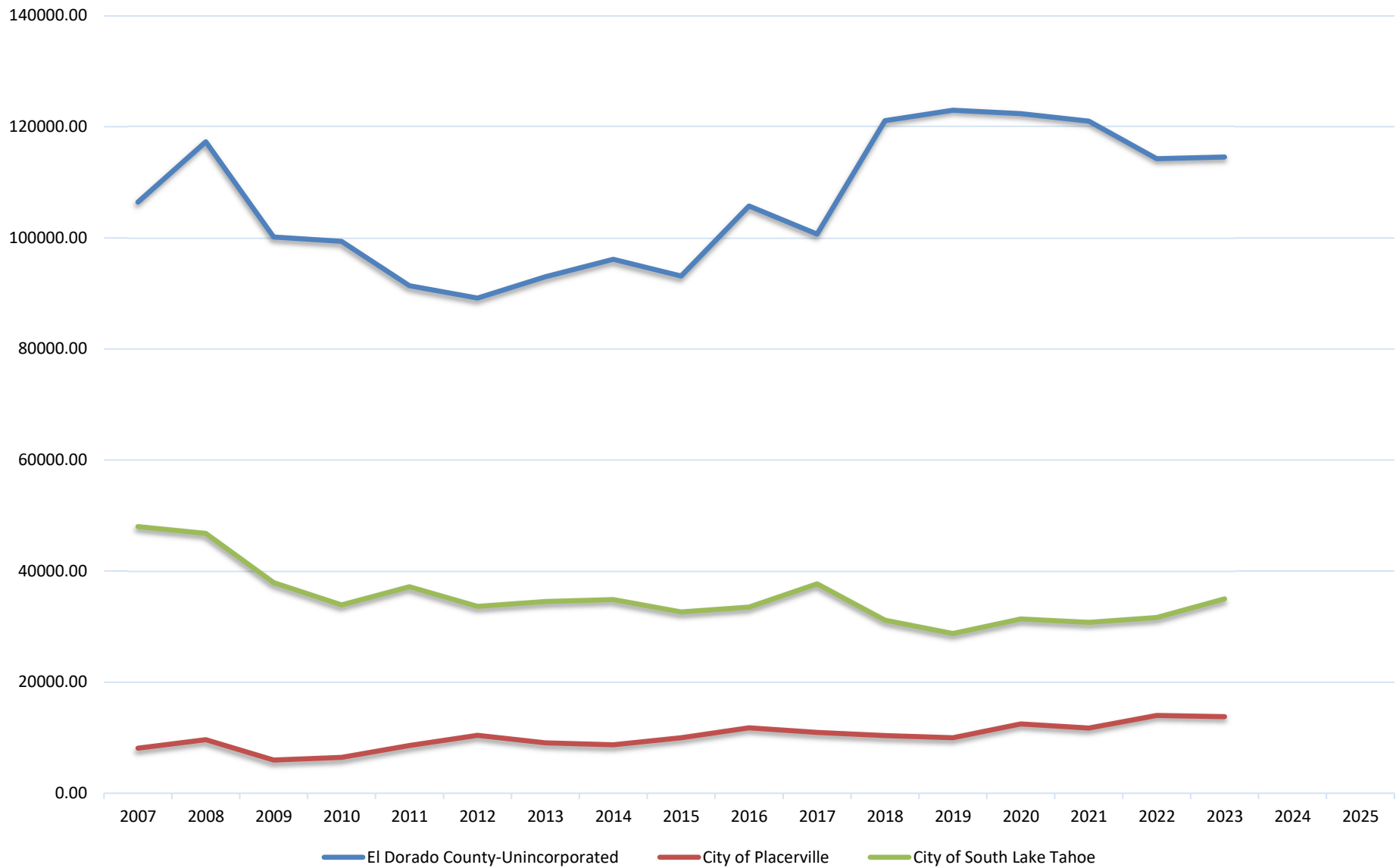
Estimated Diversion %



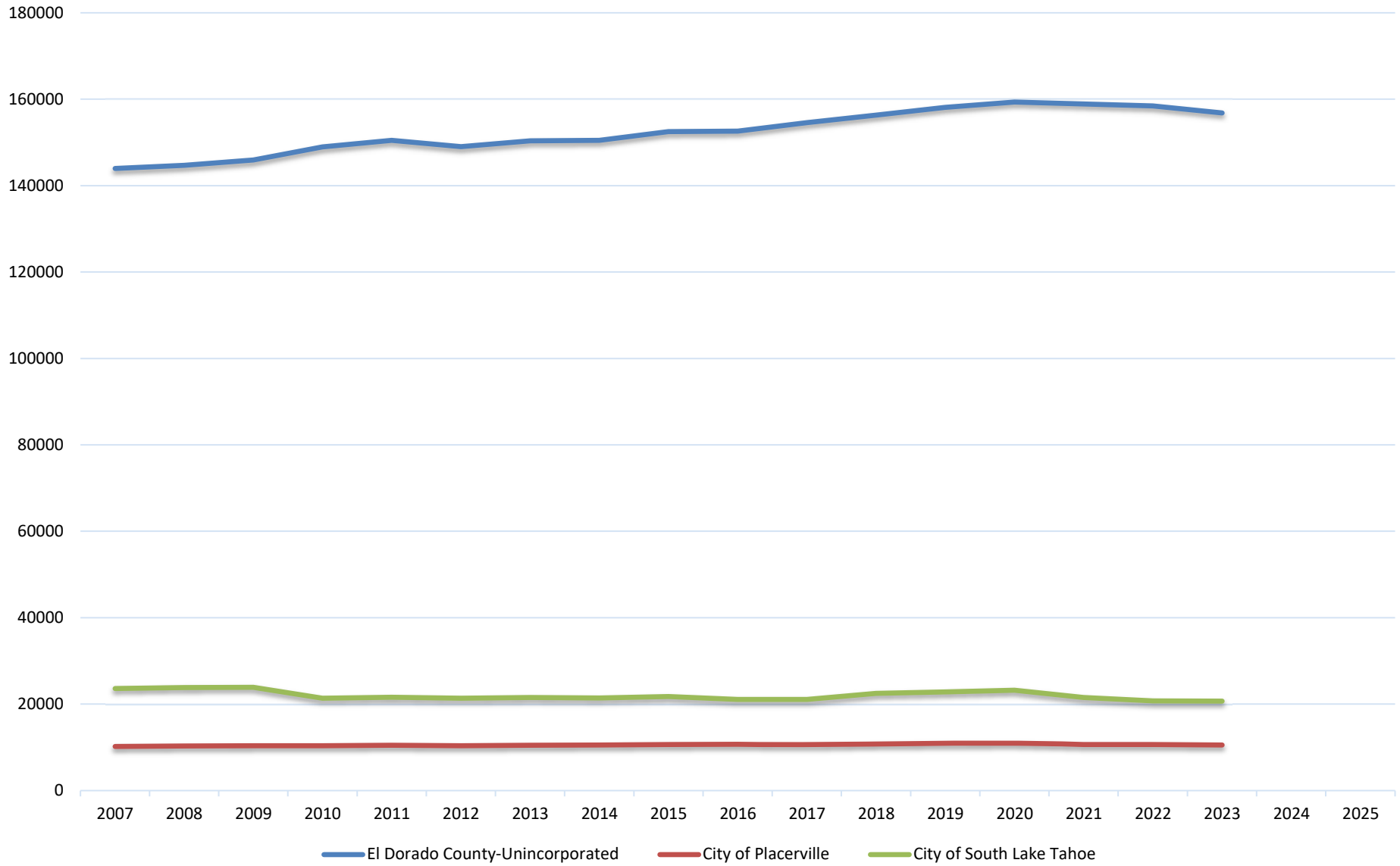
Estimated Diversion % - Employment



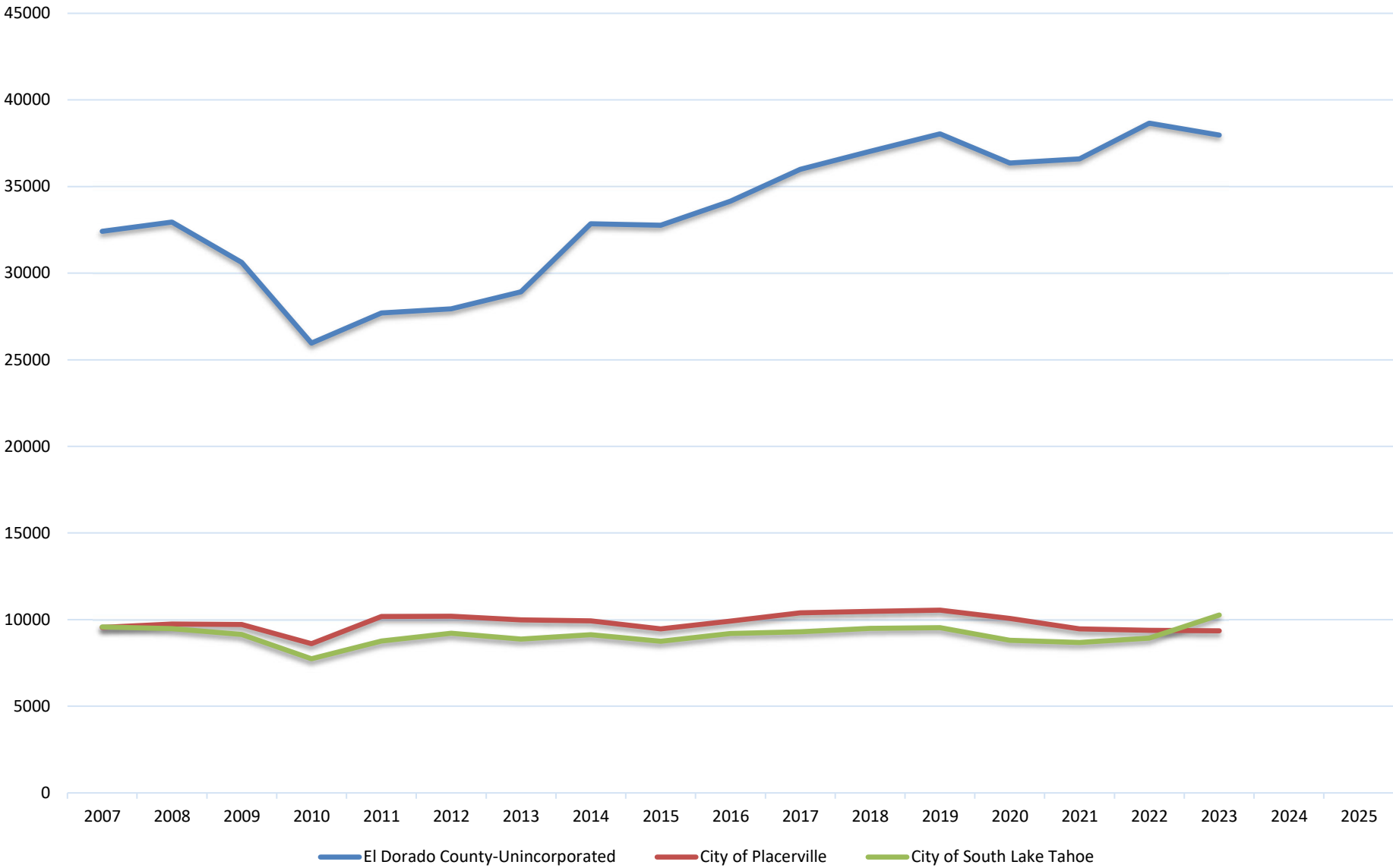
Tons of Waste Disposed



Population



Employment



Population to Employment Ratio

