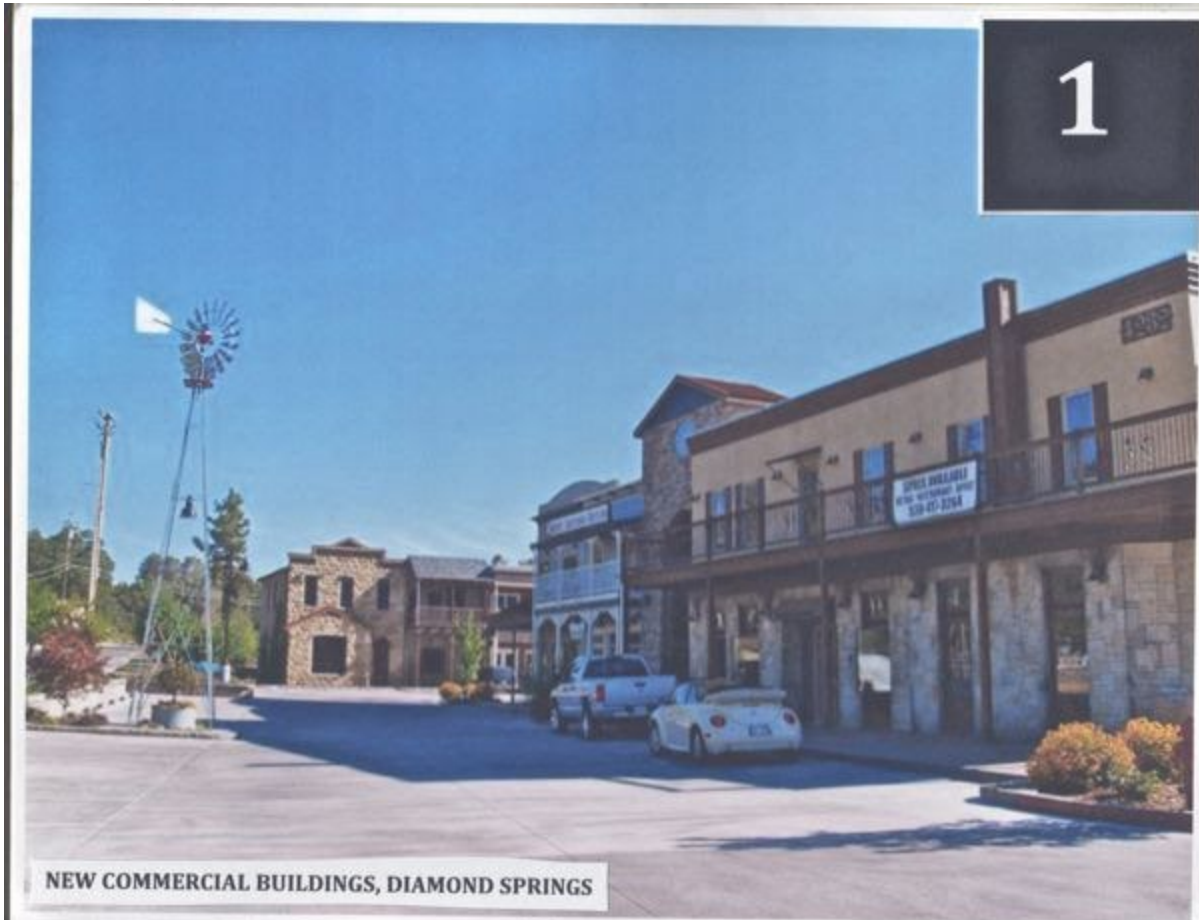


Results of 6-5-13 Design Guidelines Survey

Thank you to everyone who turned in a survey. The results are here for your information.

Do you recommend this type of design for the Shingle Springs Town Site Core Area?

1. Yes = 99 out of 126



2. Yes = 26 out of 126



3. Yes = 36 out of 126



4. Yes = 67 out of 126



5. Yes = 13 out of 126



6. Yes = 108 out of 126



7. Yes = 108 out of 126

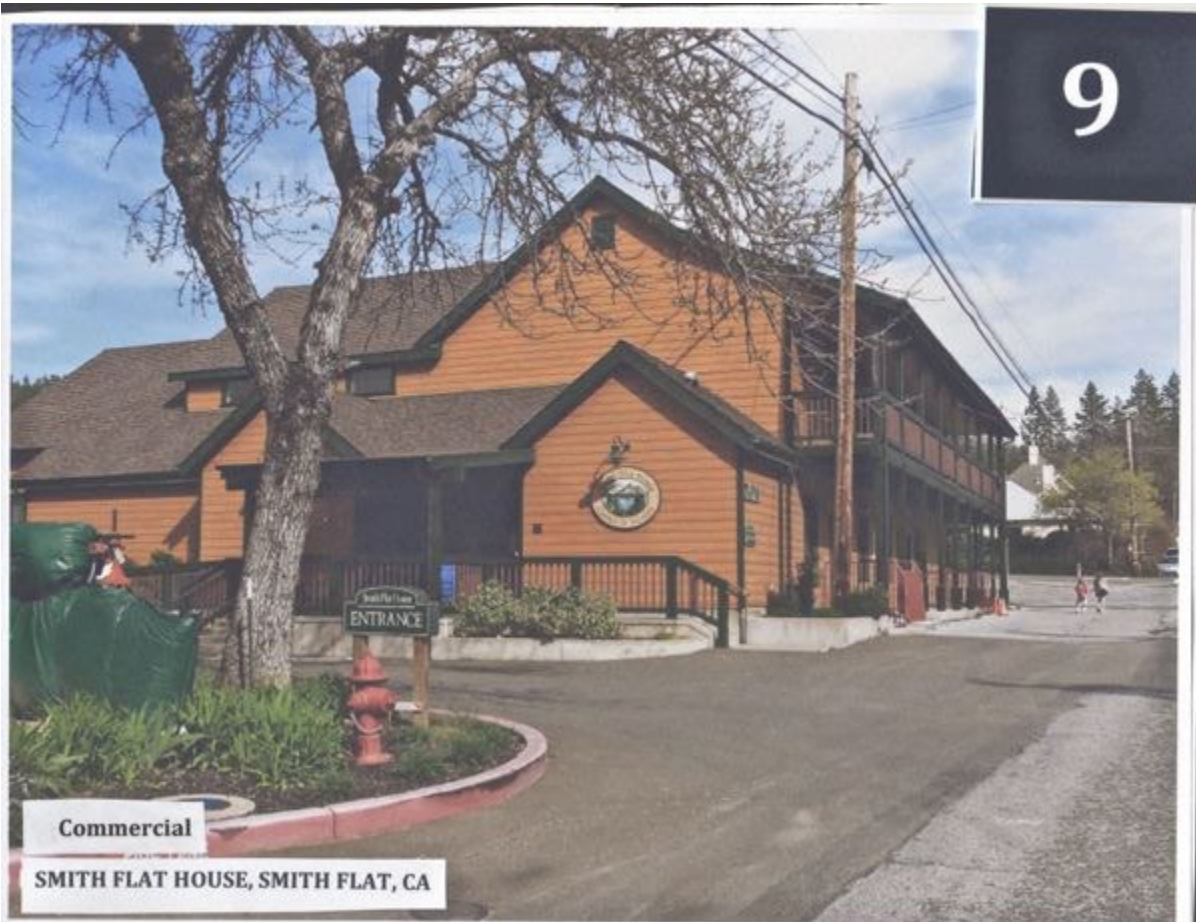


COMMERCIAL BUILDING, ANGELS CAMP

8. Yes = 83 out of 126



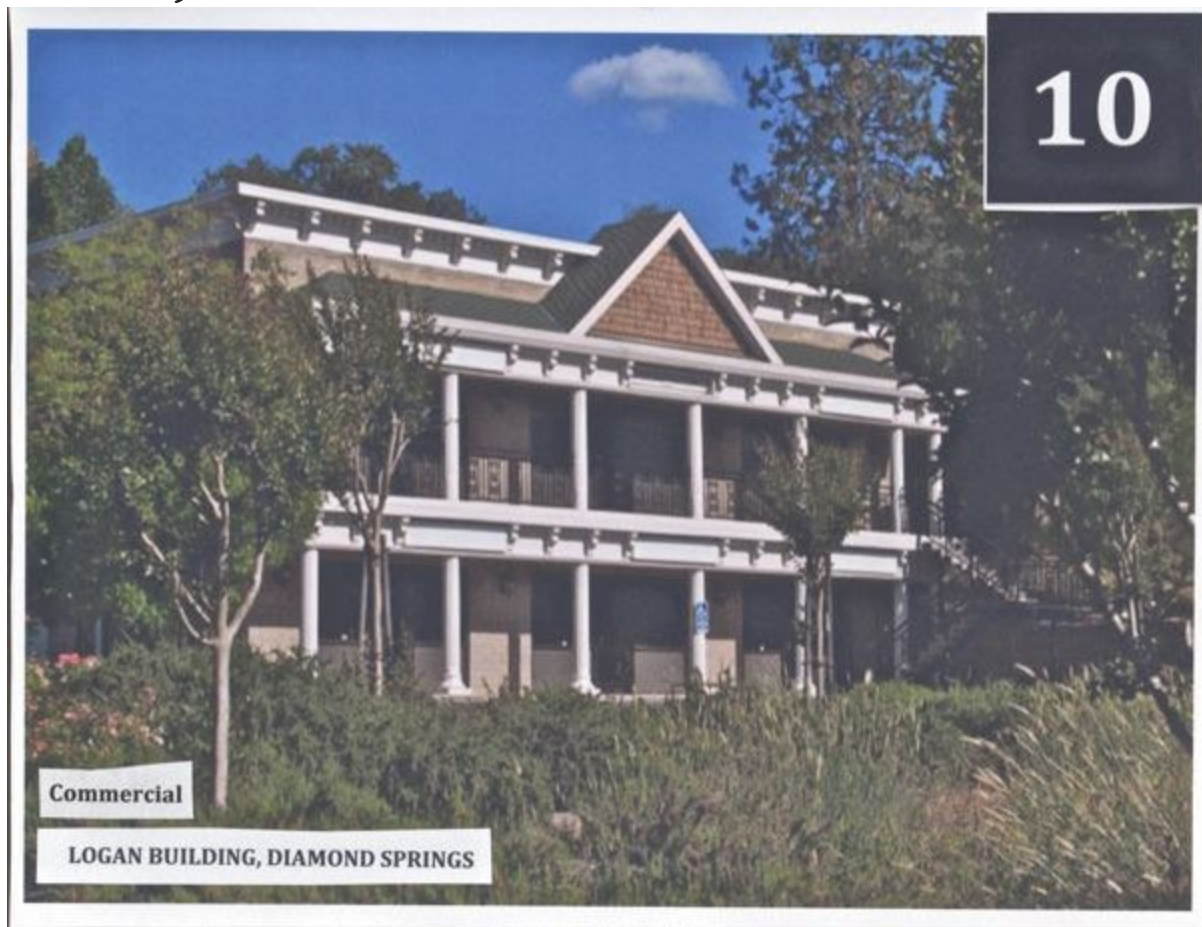
9. Yes = 88 out of 126



Commercial

SMITH FLAT HOUSE, SMITH FLAT, CA

10. Yes = 91 out of 126



11. Yes = 91 out of 126



COMMERCIAL, UNKNOWN LOCATION

12. Yes = 21 out of 126

12



COMMERCIAL, CAMERON PARK

13. Yes = 83 out of 126



14. Yes = 10 out of 126



15. Yes = 74 out of 126

15



Commercial

16. Yes = 15 out of 126



17. Yes = 111 out of 126



18. Yes = 89 out of 126



19. Yes = 27 out of 126



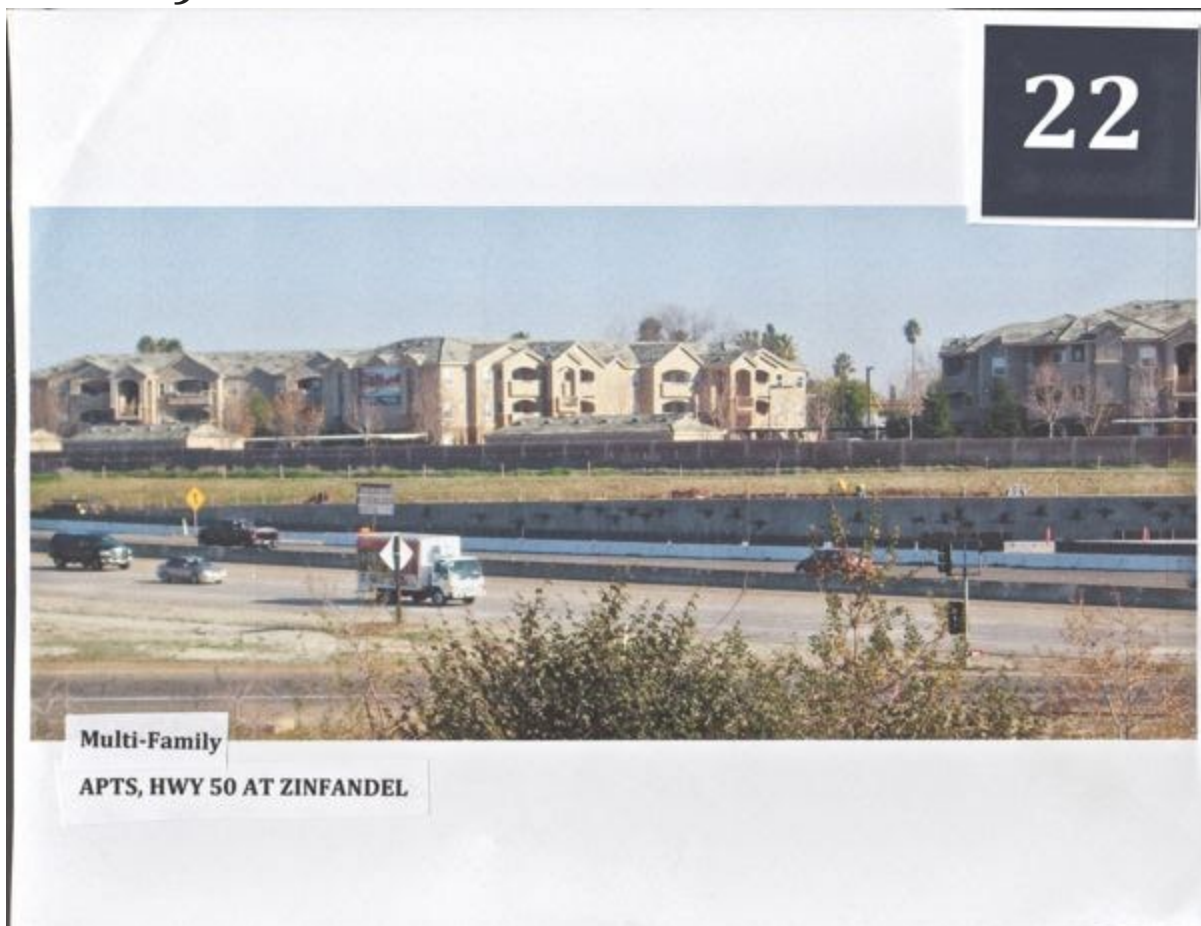
20. Yes = 39 out of 126



21. Yes = 96 out of 126



22. Yes = 5 out of 126



23. Yes = 3 out of 126

23



MULTI-FAMILY, DAVIS

24. Yes = 68 out of 126



25. Yes = 15 out of 126



26. Yes = 49 out of 126



27. Yes = 16 out of 126



28. Yes = 3 out of 126



29. Yes = 13 out of 126



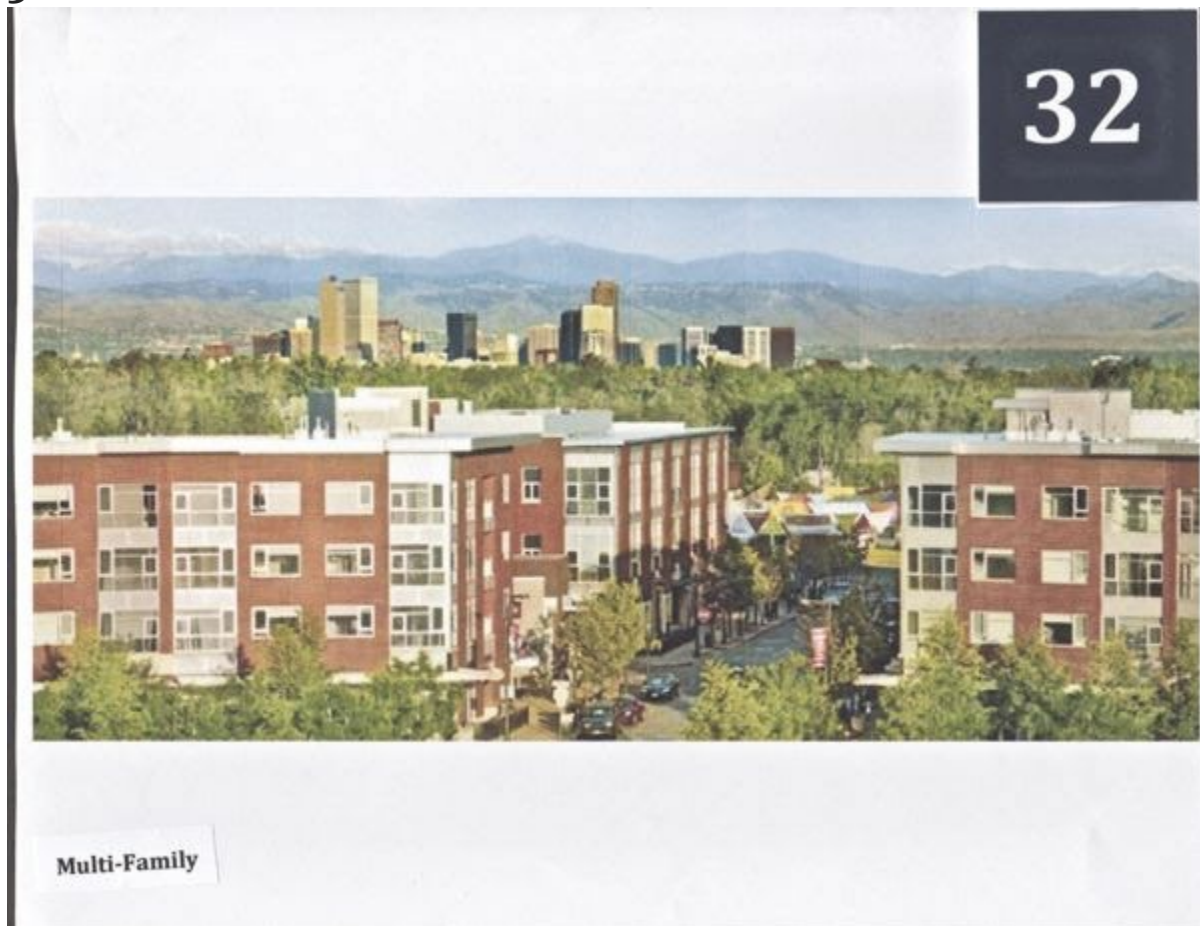
30. Yes = 68 out of 126



31. Yes = 10 out of 126



32. Yes = 2 out of 126



33. Yes = 79 out of 126



34. Yes = 48 out of 126



35. Yes = 10 out of 126

35



Multi-Family

MERCY SUNSET APTS, SHINGLE SPRINGS

36. Yes = 8 out of 126

36



Multi-Family

SMART GROWTH APTS, RANCHO CORDOVA

37. Yes = 106 out of 126



38. Yes = 86 out of 126



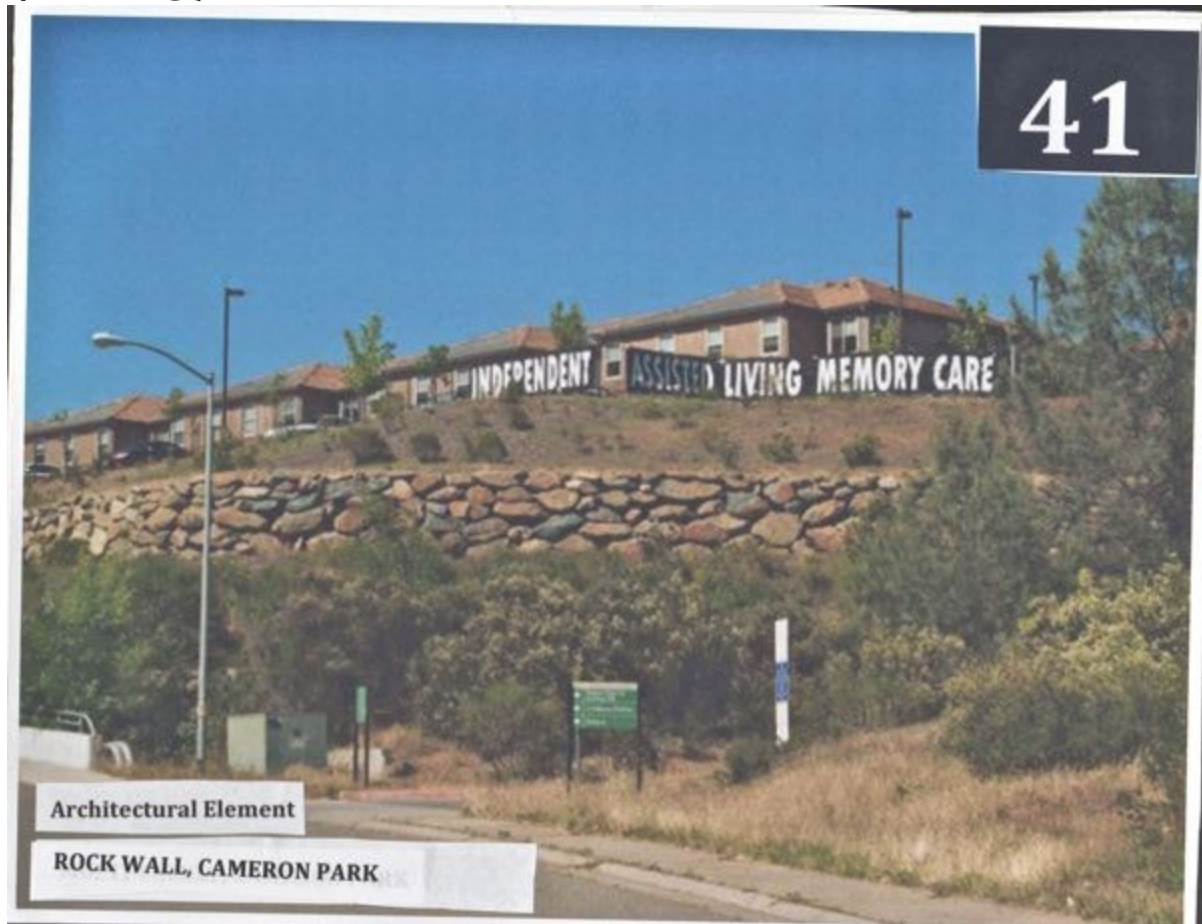
39. Yes = 62 out of 126



40. Yes = 91 out of 126



41. Yes = 37 out of 126



42. Yes = 110 out of 126



43. Yes = 106 out of 126



44. Yes = 91 out of 126



45. Yes = 90 out of 126



46. Yes = 100 out of 126

46



Public Space

SEATING, WINTERS

47. Yes = 99 out of 126



48. Yes = 98 out of 126



48

PUBLIC SPACE, SHINGLE SPRINGS

49. Yes = 102 out of 126



50. Yes = 3 out of 126



51. Yes = 77 out of 126



52. Yes = 44 out of 126



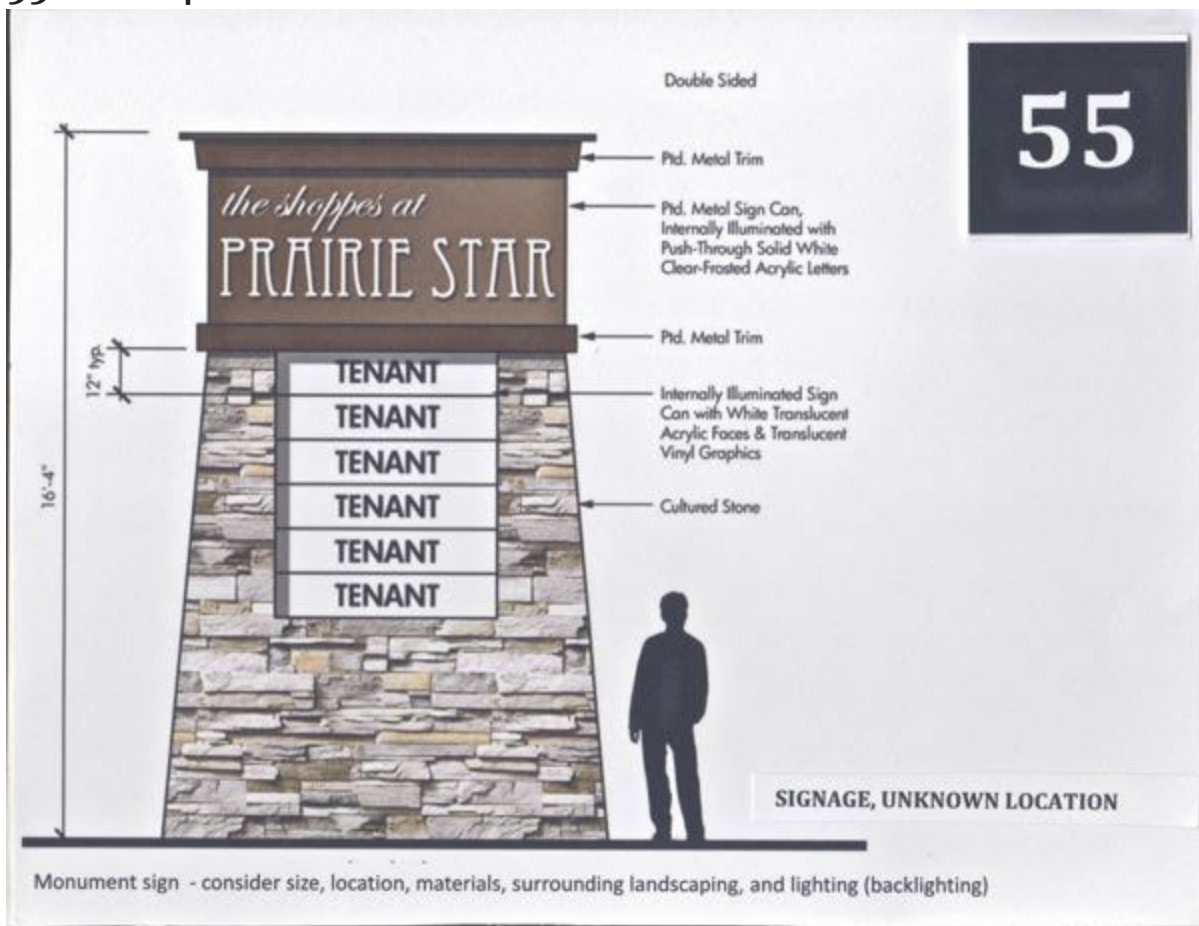
53. Yes = 94 out of 126



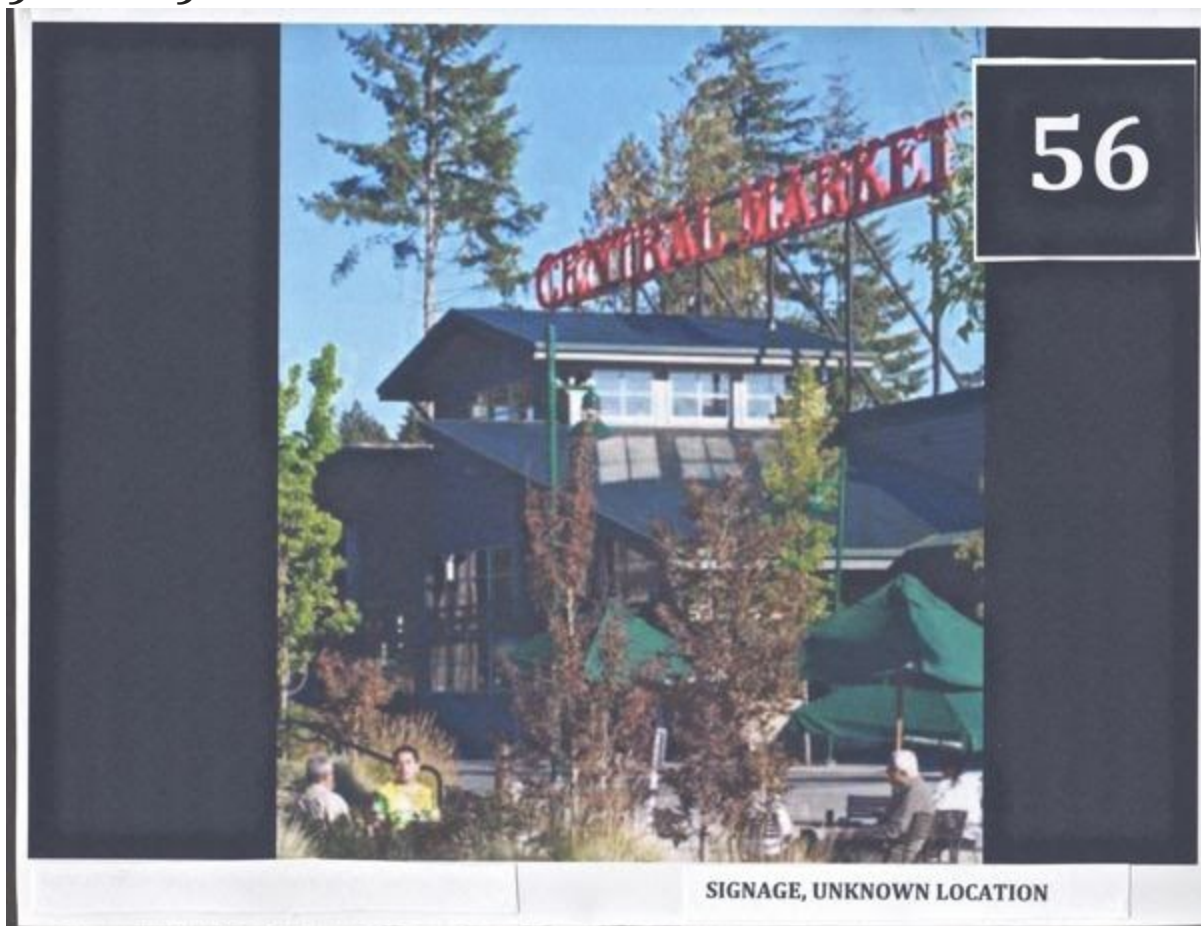
54. Yes = 71 out of 126



55. Yes = 46 out of 126



56. Yes = 50 out of 126



57. Yes = 72 out of 126



Streetscape

CREATIVE DESIGN, UNKNOWN LOCATION

58. Yes = 32 out of 126



Streetscape

LAMP POST, DIAMOND SPRINGS

59. Yes = 91 out of 126



60. Yes = 105 out of 126



61. Yes = 102 out of 126

Should Shingle Springs' historical sites be preserved?



Back of paper comments:

Don't HELLA El Dorado! Do Government before they DO you!

The circled items were ones that I didn't have time to review. Sorry! Great presentation.

Let's not lose anymore of our character such as the Stone House already gone!

#58 Lamp base looks like pipe, not good - flowers yes

We don't want that "Mediterranean/Italian" look. We want the Gold Rush, or farming look, or pioneer look. Parking needs to have space for pickup trucks.

#58 like the lamp, but not the "pipe"-look concrete.

#33 Could be a good design-style for low-income housing here - lots of people thought the "barn-look" fits in well.

Tear down the billboard!

I would like to see smart growth vs no growth. We can't stop a town from developing but we can stop that development to include urban sprawl and loss of habitats and farmland. By designing land to max use on the smaller space we can keep our rural community and sustain healthy growth.

↑ Apartments with businesses intergrated into communities

↓ Park lots

↑ Parking garages and roofs w/ parking

↑ More public trans and bike lanes

Historic preservation, rather than placing limits on commercial development, can be taken to a higher, and probably more disinterested level than the board of supervisors.

We are big enough! We do not need any added commercial buildings!

Keep architectural elements on buildings so each is individual. El Dorado Town Center is very nice.

Front of paper comments:

Didn't have time to review all of the photos.

Partial survey - ran out of time!

#61 - Yes! When we have out-of-town visitors, we take them to the train and the Depot.

#40 - No lights

#61 - Absolutely

We'd like any decor that embraces Shingle Springs' historical past.