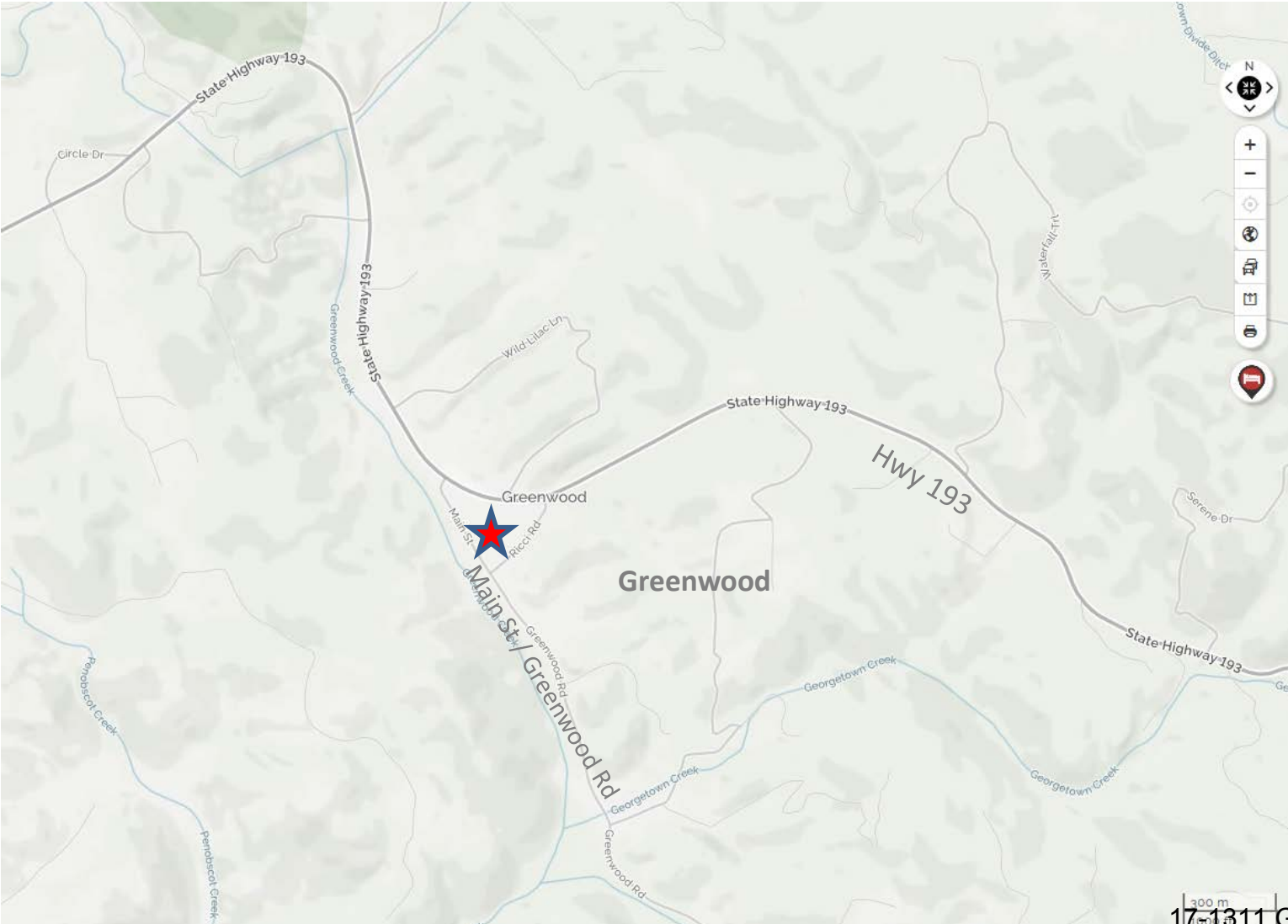


A16-0004 / Z16-0011

**DOWLER GENERAL PLAN
AMENDMENT AND REZONE**

Planning Commission - December 14, 2017 - County of El Dorado

VICINITY MAP



SITE

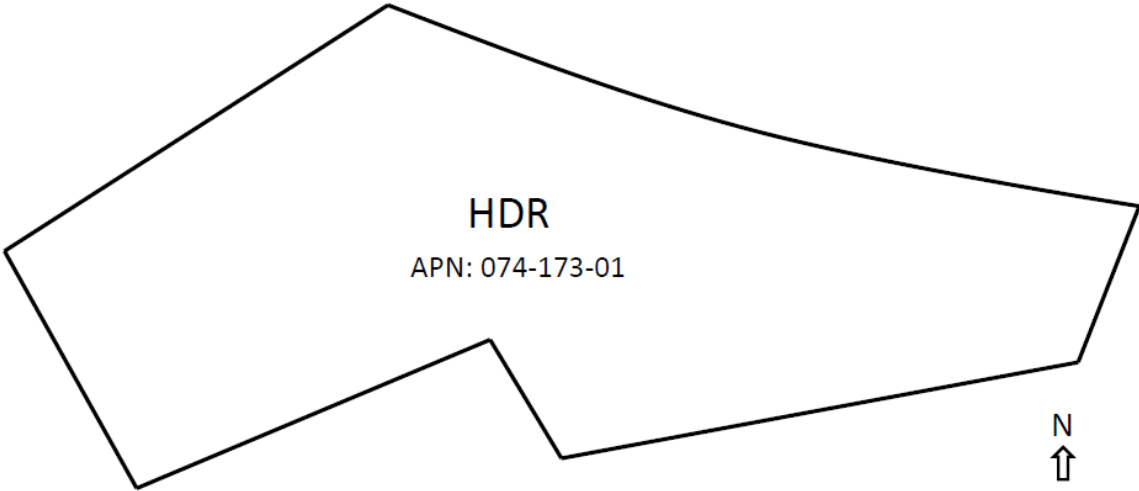
Project Site



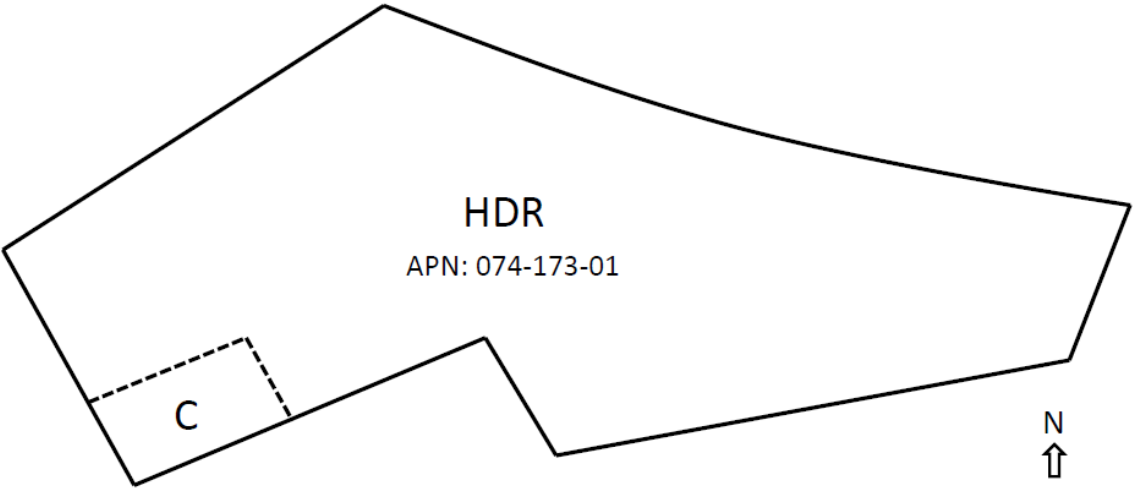
A16-0004 / Z16-0011



GENERAL PLAN AMENDMENT

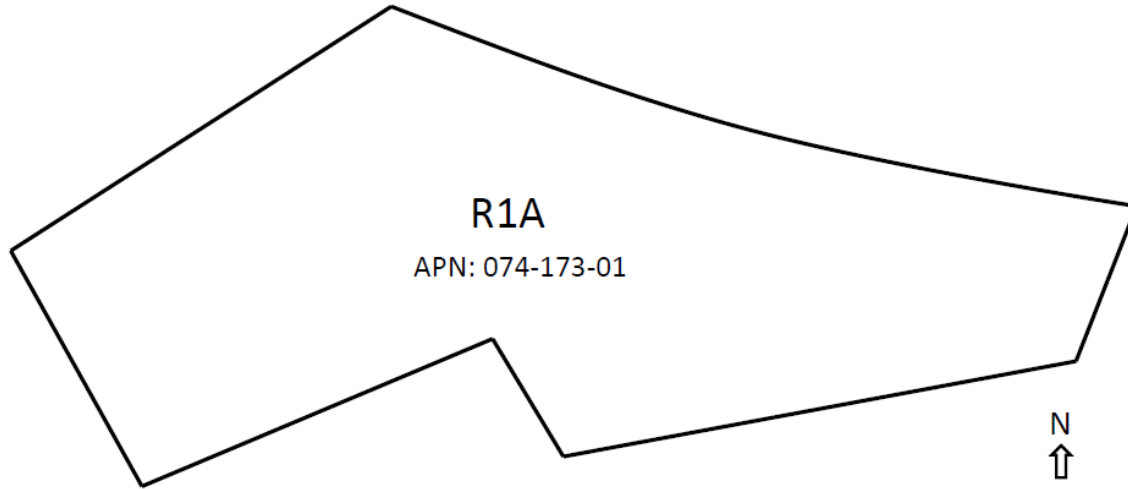


Existing

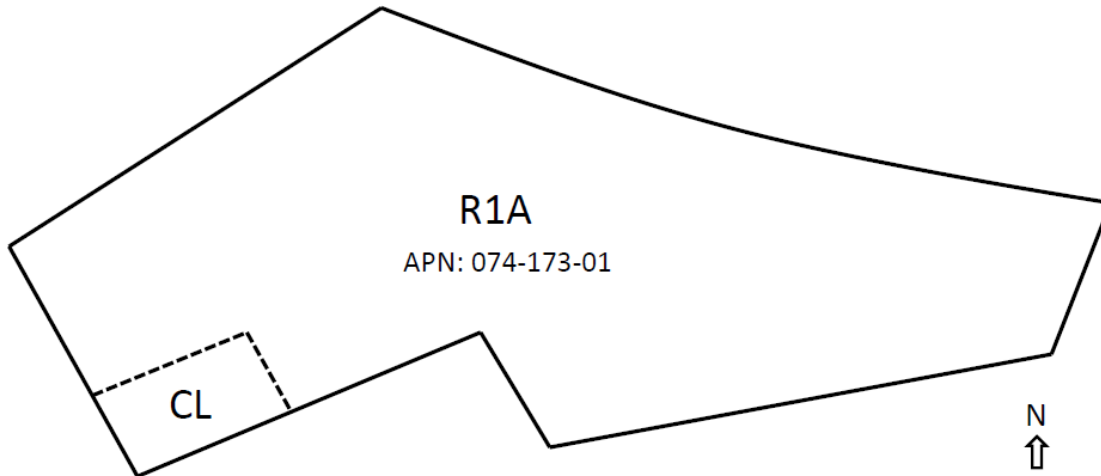


Proposed

REZONE



Existing



Proposed

RECOMMENDATION

Staff recommends that Planning Commission forward a recommendation to the Board of Supervisors to take the following actions:

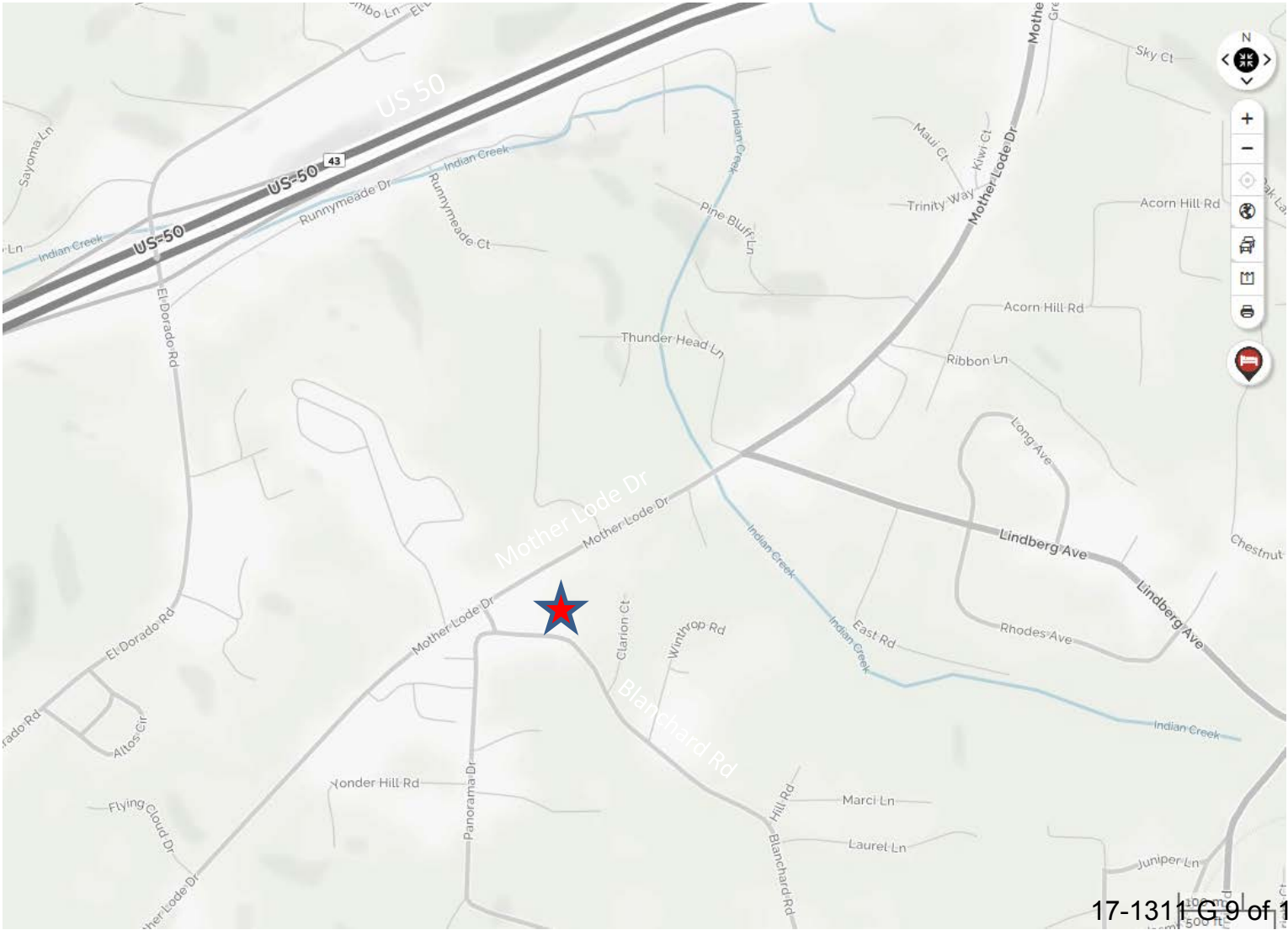
- Adopt Negative Declaration based on the Initial Study prepared by staff;
- Approve General Plan Amendment A16-0004 based on the Findings presented; and
- Approve Rezone Z16-0011 based on the Findings presented.

A17-0001 / Z17-0003

**OLIVER GENERAL PLAN
AMENDMENT AND REZONE**

Planning Commission - December 14, 2017 - County of El Dorado

VICINITY MAP



SITE

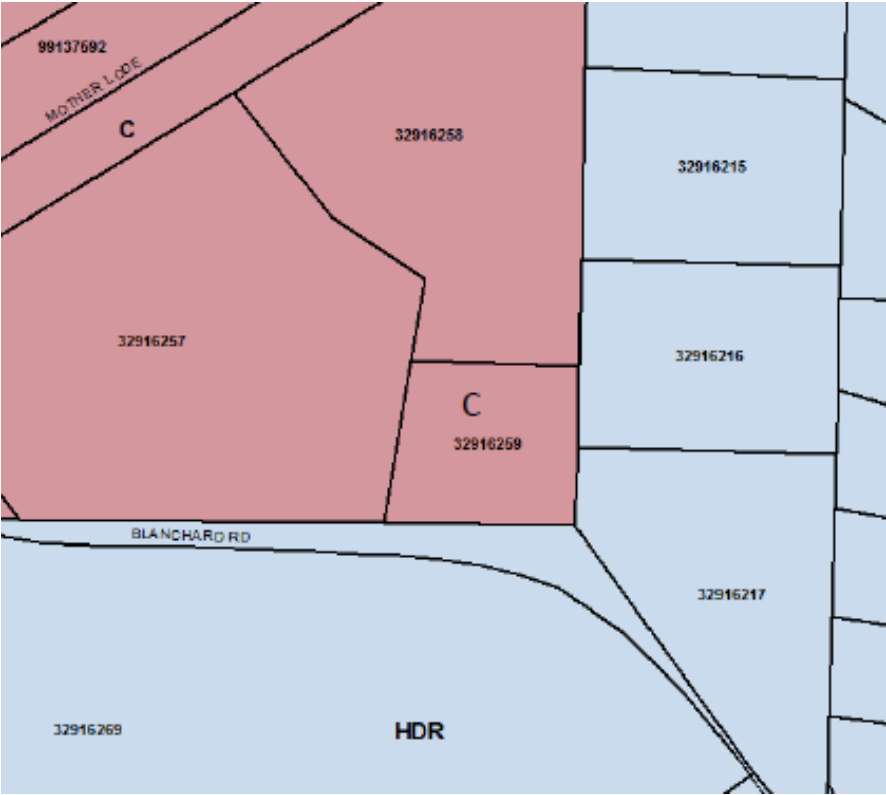
Project Site



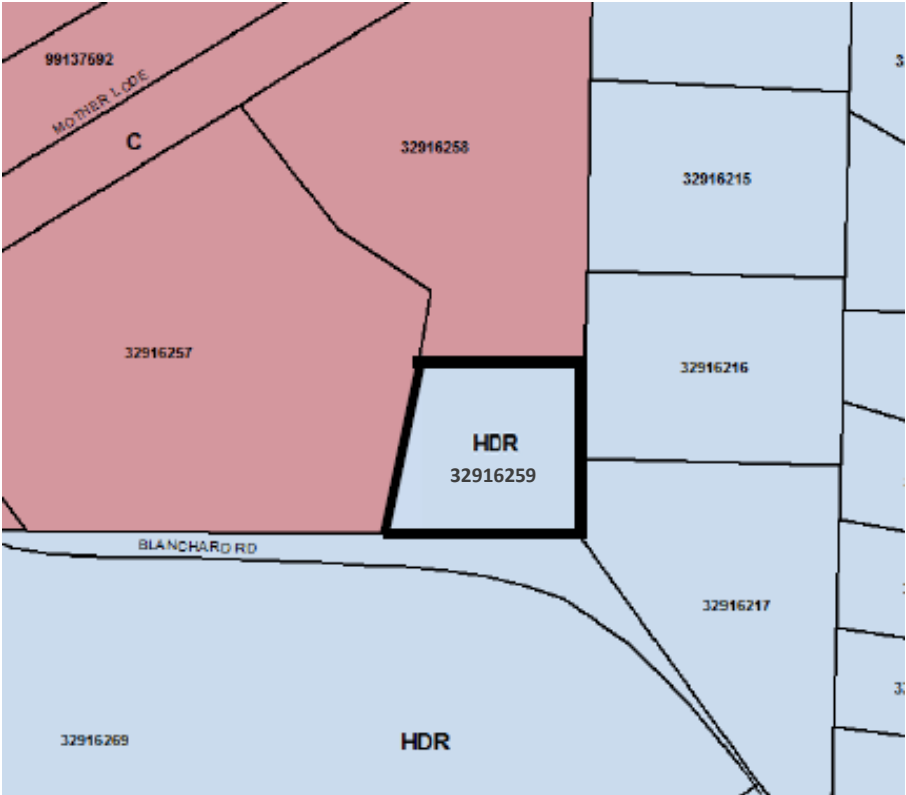
A17-0001 / Z17-0003



GENERAL PLAN AMENDMENT

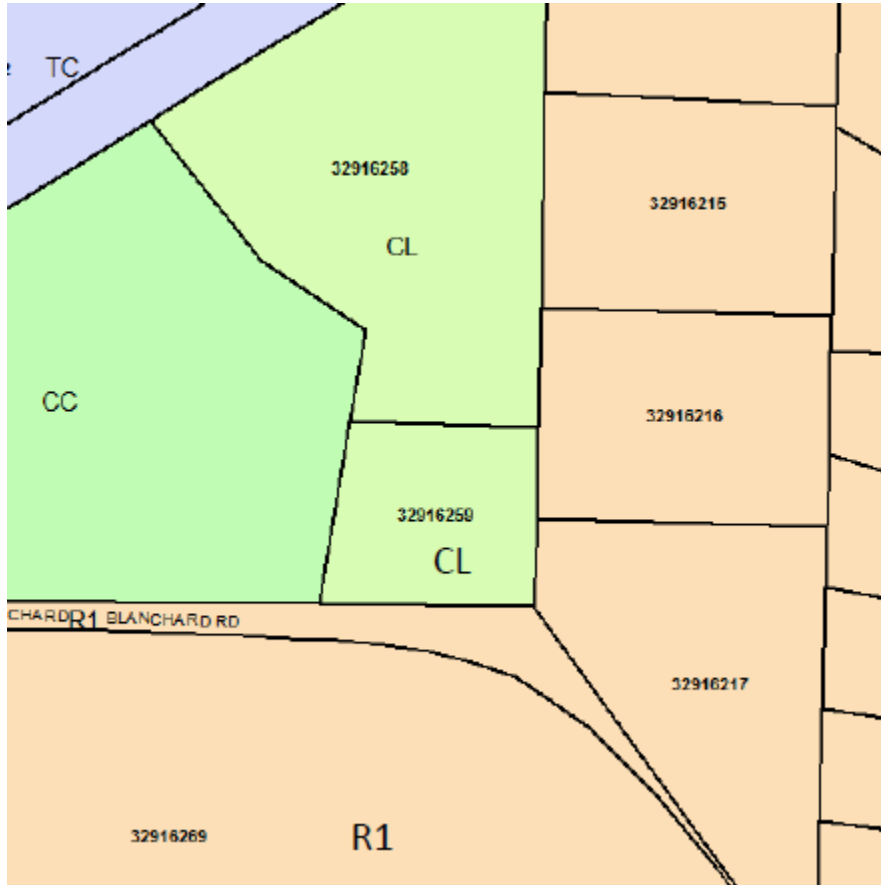


Existing

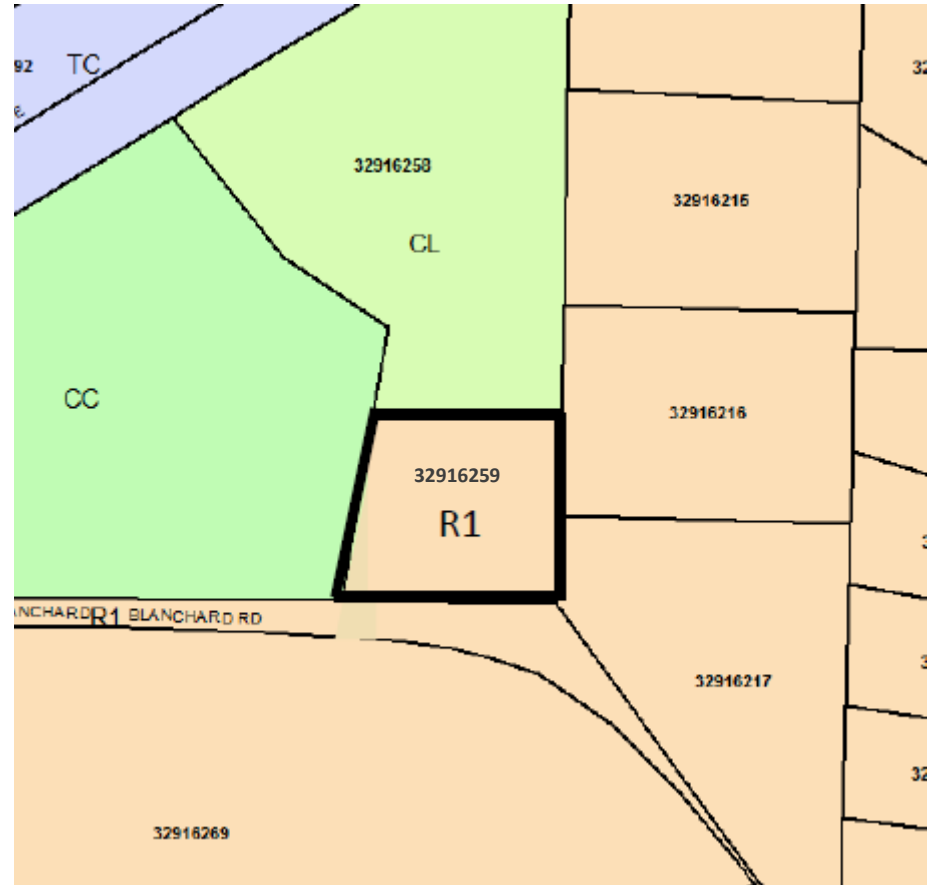


Proposed

REZONE



Existing



Proposed

RECOMMENDATION

Staff recommends that Planning Commission forward a recommendation to the Board of Supervisors to take the following actions:

- Adopt Negative Declaration based on the Initial Study prepared by staff;
- Approve General Plan Amendment A17-0001 based on the Findings presented; and
- Approve Rezone Z17-0003 based on the Findings presented.