

CITY COUNCIL/BOARD OF SUPERVISORS UPDATE AUGUST 2008



SOUTH LAKE TAHOE 56 ACRE PROJECT

Full site



SOUTH LAKE TAHOE 56 ACRE PROJECT

Waterfront



SOUTH LAKE TAHOE 56 ACRE PROJECT

Waterfront

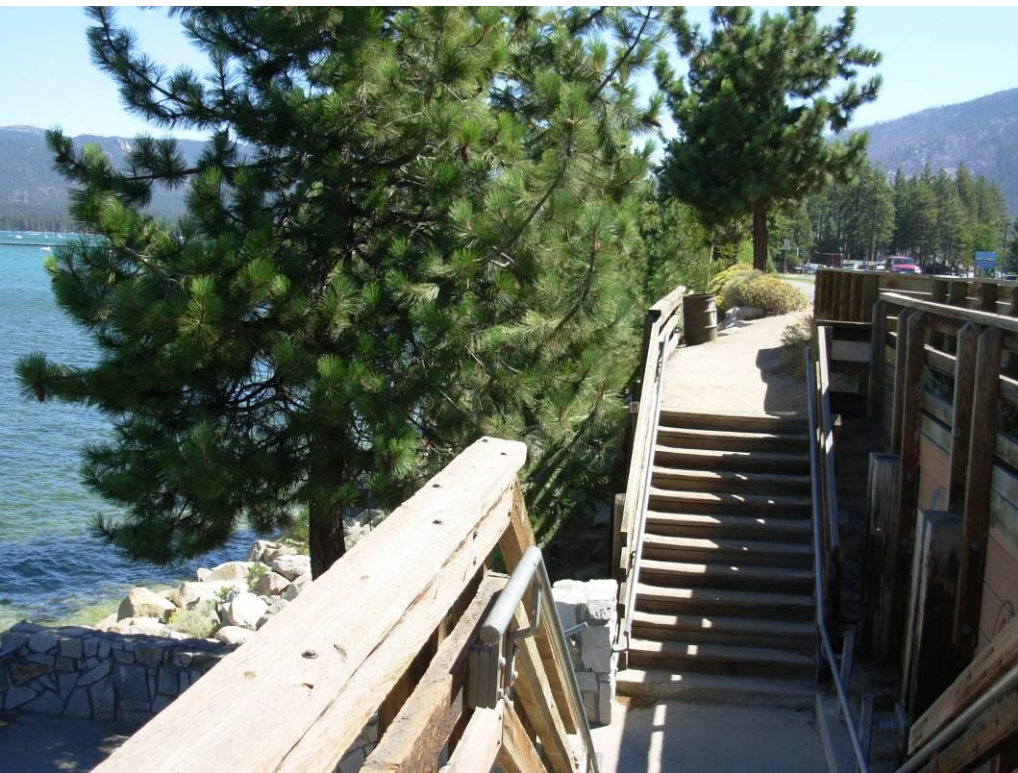
0 25 50 feet



SOUTH LAKE TAHOE 56 ACRE PROJECT

Waterfront

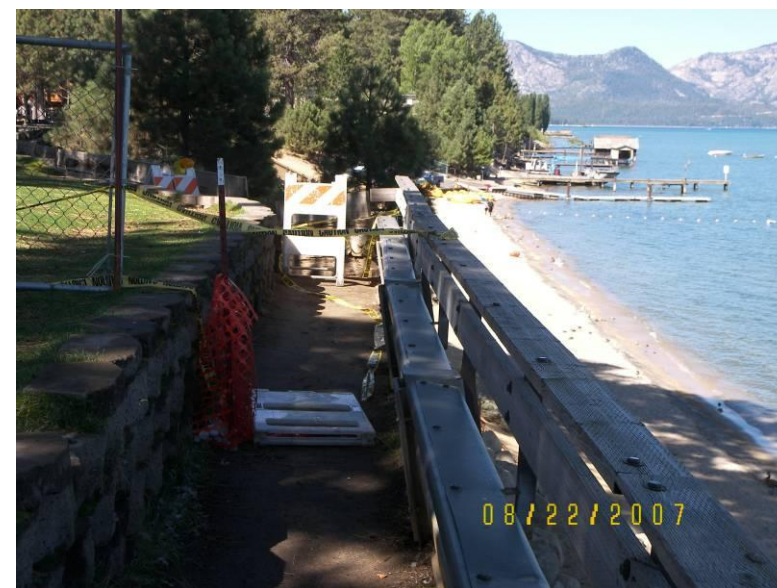
- **Create ADA access to lake**
- **Control erosion**
- **Address failing retaining wall**
- **Incorporate water treatment facilities and improve environmental quality**
- **Enhance views of the lake for pedestrians and people in cars**
- **Create seating areas and picnic areas with views of the lake**
- **Improve views of site from lake**



SOUTH LAKE TAHOE 56 ACRE PROJECT

Waterfront

- Create ADA access to lake
- Control erosion
- Address failing retaining wall



Waterfront

- Create ADA access to lake
- Control erosion
- Address failing retaining wall
- Incorporate water treatment facilities and improve environmental quality
- Enhance views of the lake for pedestrians and people in cars
- Create seating areas and picnic areas with views of the lake
- Improve views of site from lake
- Create safe bicycle and pedestrian path



SOUTH LAKE TAHOE 56 ACRE PROJECT

SCALE: 1" = 20'
0' 10' 20' 80' 160' feet



LAKE TAHOE

LAKE TAHOE

LAKE TAHOE

Lake Overlook

Cantilevered Walk

U.S. HIGHWAY 50

U.S. HIGHWAY 50

U.S. HIGHWAY 50

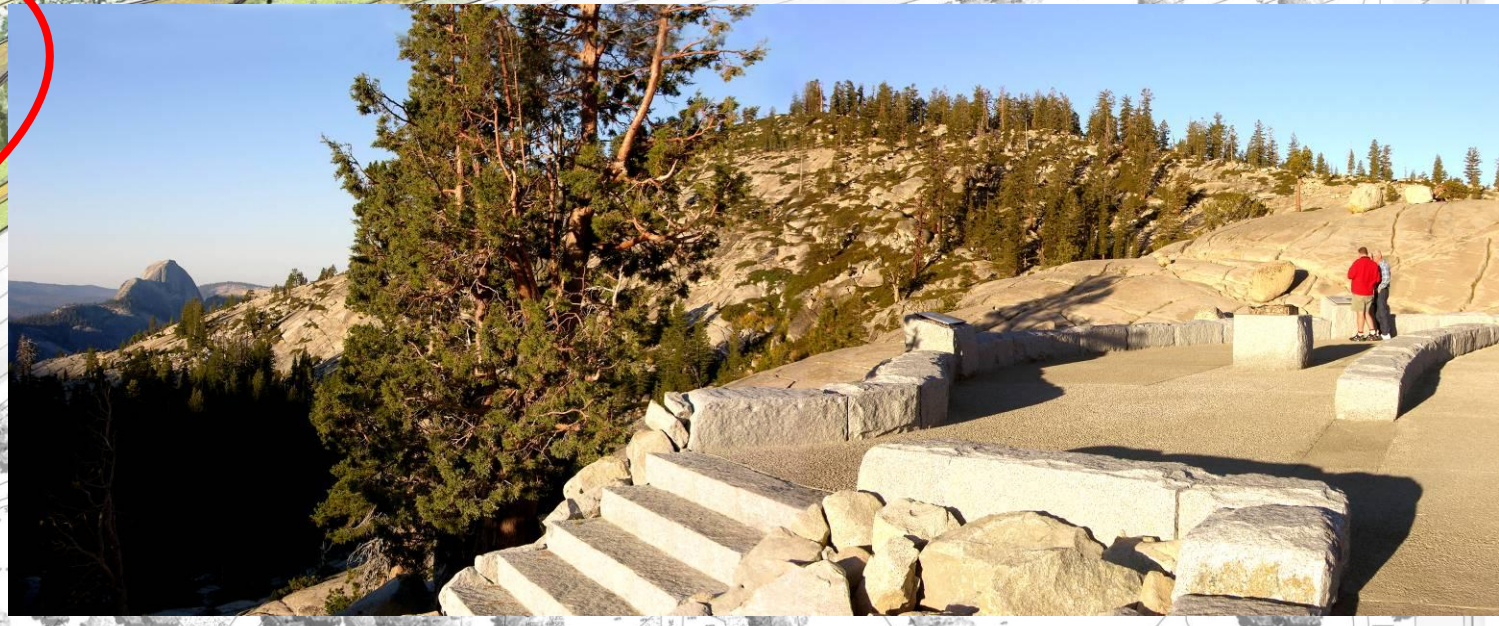
RUFUS ALLEN BLVD.



- lake terraces and ADA path
- lakefront plaza
- lakefront picnic areas
- non-motorized boat house and concession building
- cantilevered viewing deck
- ADA accessible lake observation area

SOUTH LAKE TAHOE 56 ACRE PROJECT

SCALE: 1" = 20'
0' 10' 20' 80' 160' feet



- lake terraces and ADA path
- lakefront plaza
- lakefront picnic areas
- non-motorized boat house and concession building
- cantilevered viewing deck
- ADA accessible lake observation area



SOUTH LAKE TAHOE 56 ACRE PROJECT



SOUTH LAKE TAHOE 56 ACRE PROJECT



SOUTH LAKE TAHOE 56 ACRE PROJECT

SCALE: 1" = 20'
0' 10' 20' 80' 160' feet



LAKE TAHOE

LAKE TAHOE

LAKE TAHOE



Lake Overlook

Cantilevered Walk

U.S. HIGHWAY 50

U.S. HIGHWAY 50

U.S. HIGHWAY 50

RUFUS ALLEN BLVD.

- lake terraces and ADA path
- lakefront plaza
- lakefront picnic areas
- non-motorized boat house and concession building
- cantilevered viewing deck
- ADA accessible lake observation area

SOUTH LAKE TAHOE 56 ACRE PROJECT



SOUTH LAKE TAHOE 56 ACRE PROJECT



SOUTH LAKE TAHOE 56 ACRE PROJECT

SCALE: 1" = 20'
0' 10' 20' 80' 160' feet



LAKE TAHOE

LAKE TAHOE

LAKE TAHOE



- lake terraces and ADA path
- lakefront plaza
- lakefront picnic areas
- non-motorized boat house and concession building
- cantilevered viewing deck
- ADA accessible lake observation area

SOUTH LAKE TAHOE 56 ACRE PROJECT



SOUTH LAKE TAHOE 56 ACRE PROJECT



SOUTH LAKE TAHOE 56 ACRE PROJECT

SCALE: 1" = 20'
0' 10' 20' 80' 160' feet



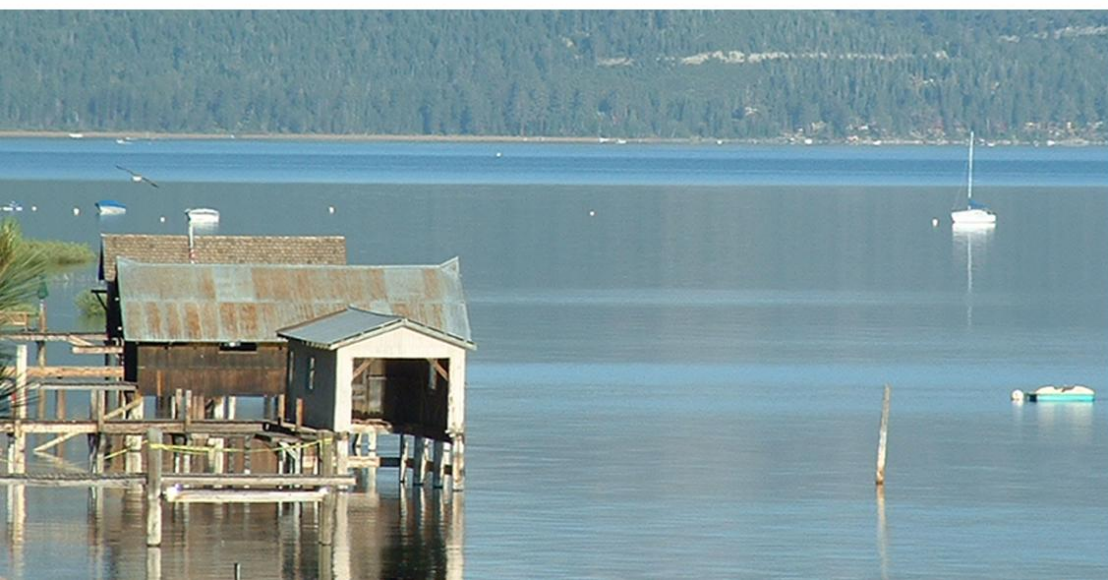
LAKE TAHOE

LAKE TAHOE



- lake terraces and ADA path
- lakefront plaza
- lakefront picnic areas
- **non-motorized boat house and concession building**
- cantilevered viewing deck
- ADA accessible lake observation area

SOUTH LAKE TAHOE 56 ACRE PROJECT

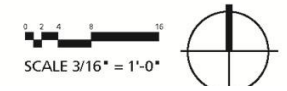
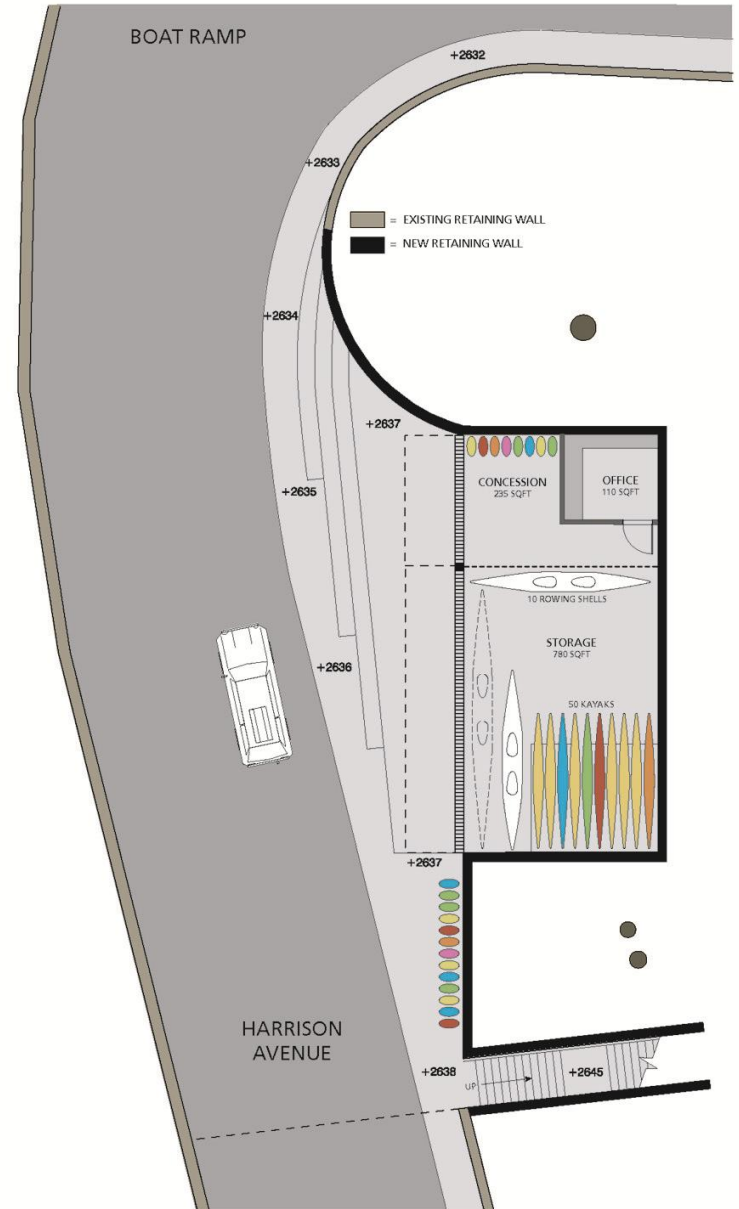




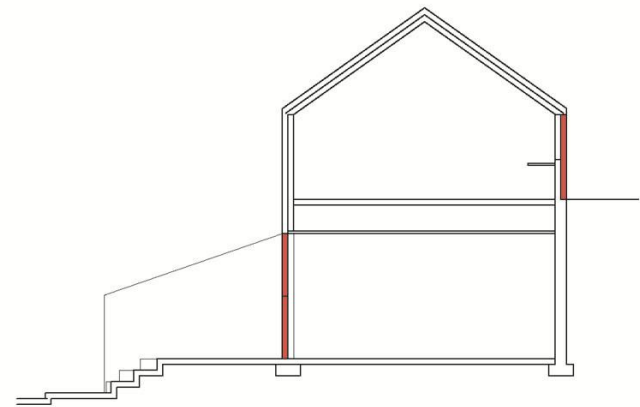
SEEKING HIGHEST LEVEL OF LEED CERTIFICATION

Site
Water
Energy
Materials
Indoor environmental quality
Innovation

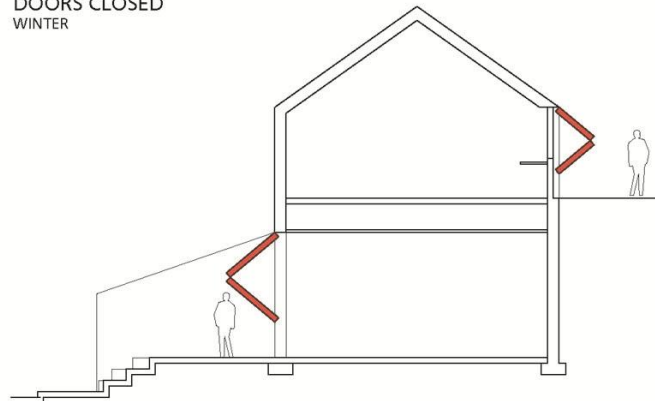
SOUTH LAKE TAHOE 56 ACRE PROJECT



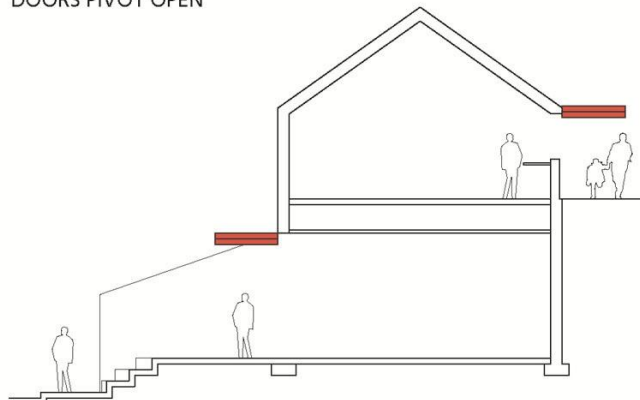
SOUTH LAKE TAHOE 56 ACRE PROJECT



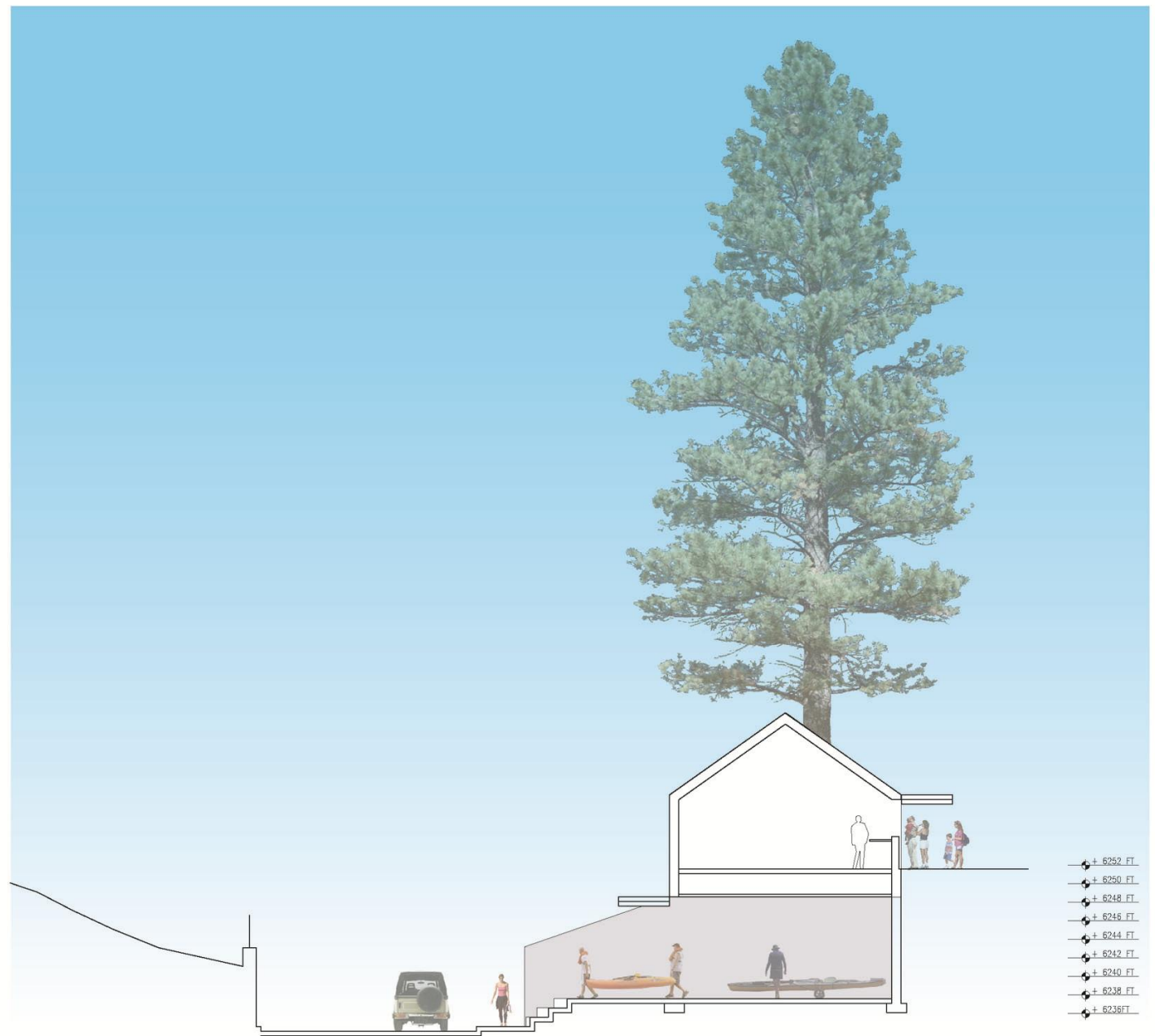
DOORS CLOSED
WINTER



DOORS PIVOT OPEN



DOORS BECOME CANOPIES
KAYAK AND CONCESSION ACCESS

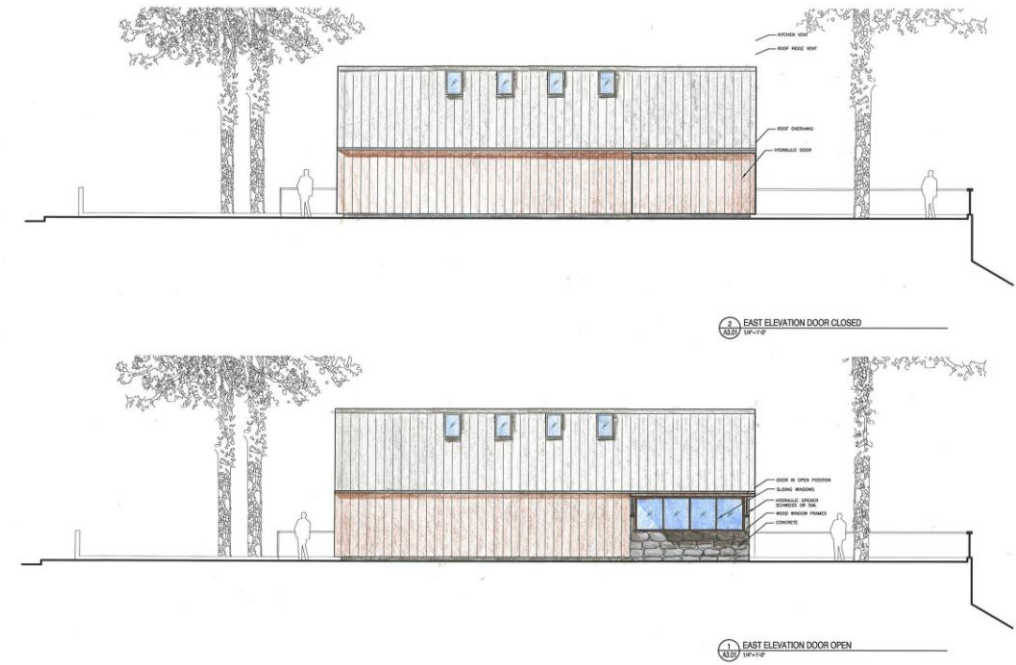


- ± 6262 FT
- ± 6250 FT
- ± 6248 FT
- ± 6246 FT
- ± 6244 FT
- ± 6242 FT
- ± 6240 FT
- ± 6238 FT
- ± 6236 FT

EAST-WEST SECTION LOOKING NORTH

0 2 4 8 16
SCALE 1/4" = 1'-0"

SOUTH LAKE TAHOE 56 ACRE PROJECT



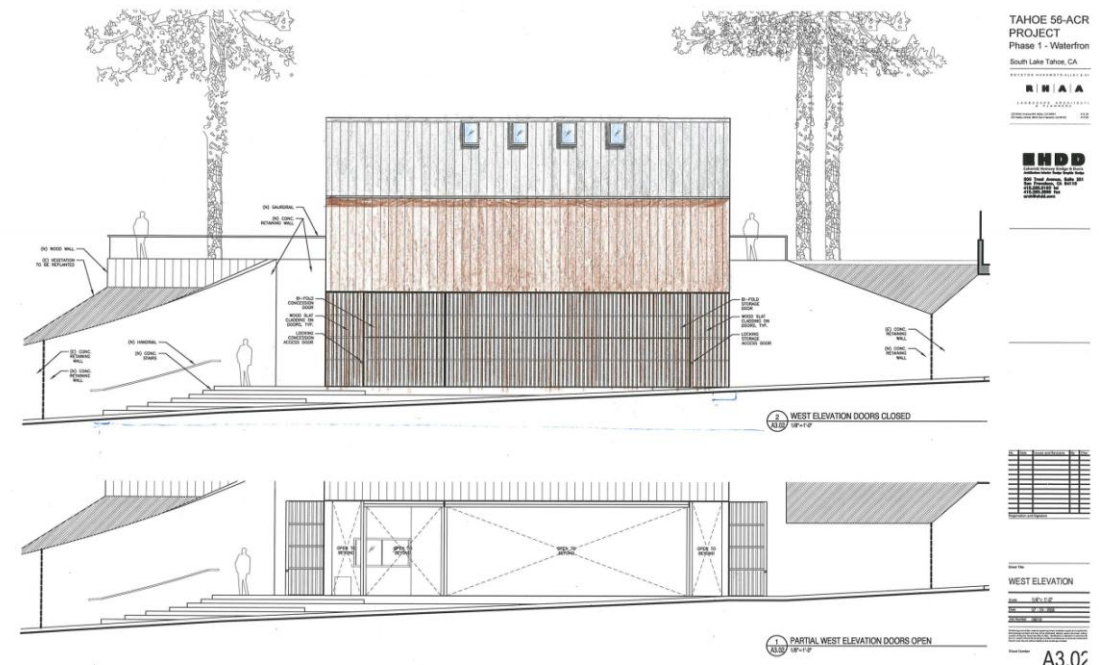
TAHOE 56-ACR
PROJECT
Phase 1 - Waterfront
South Lake Tahoe, CA

R H A A

EHDD
ARCHITECTURAL DESIGN
10000 S. LAKE TAHOE BLVD., SUITE 100
SOUTH LAKE TAHOE, CA 96150
TEL: 760.938.1111

EAST ELEVATION
DATE: 10/15/19
SCALE: 1/8" = 1'-0"
DRAWN: JLD
CHECKED: JLD

A3.01



TAHOE 56-ACR
PROJECT
Phase 1 - Waterfront
South Lake Tahoe, CA

R H A A

EHDD
ARCHITECTURAL DESIGN
10000 S. LAKE TAHOE BLVD., SUITE 100
SOUTH LAKE TAHOE, CA 96150
TEL: 760.938.1111

WEST ELEVATION
DATE: 10/15/19
SCALE: 1/8" = 1'-0"
DRAWN: JLD
CHECKED: JLD

A3.02



TAHOE 56-ACR
PROJECT
Phase 1 - Waterfront
South Lake Tahoe, CA

R H A A

EHDD
ARCHITECTURAL DESIGN
10000 S. LAKE TAHOE BLVD., SUITE 100
SOUTH LAKE TAHOE, CA 96150
TEL: 760.938.1111

NORTH & SOUTH
ELEVATIONS
DATE: 10/15/19
SCALE: 1/8" = 1'-0"
DRAWN: JLD
CHECKED: JLD

A3.03

SOUTH LAKE TAHOE 56 ACRE PROJECT

SCALE: 1" = 20'
0' 10' 20' 80' 160' feet



LAKE TAHOE

LAKE TAHOE

LAKE TAHOE

Lake Overlook

Cantilevered Walk

U.S. HIGHWAY 50

U.S. HIGHWAY 50

Boat Launch

Boat House

Waterfront Plaza

SOUTH LAKE TAHOE 56 ACRE PROJECT

- lake terraces and ADA path
- lakefront plaza
- lakefront picnic areas
- non-motorized boat house and concession building
- **cantilevered viewing deck**
- **ADA accessible lake observation area**



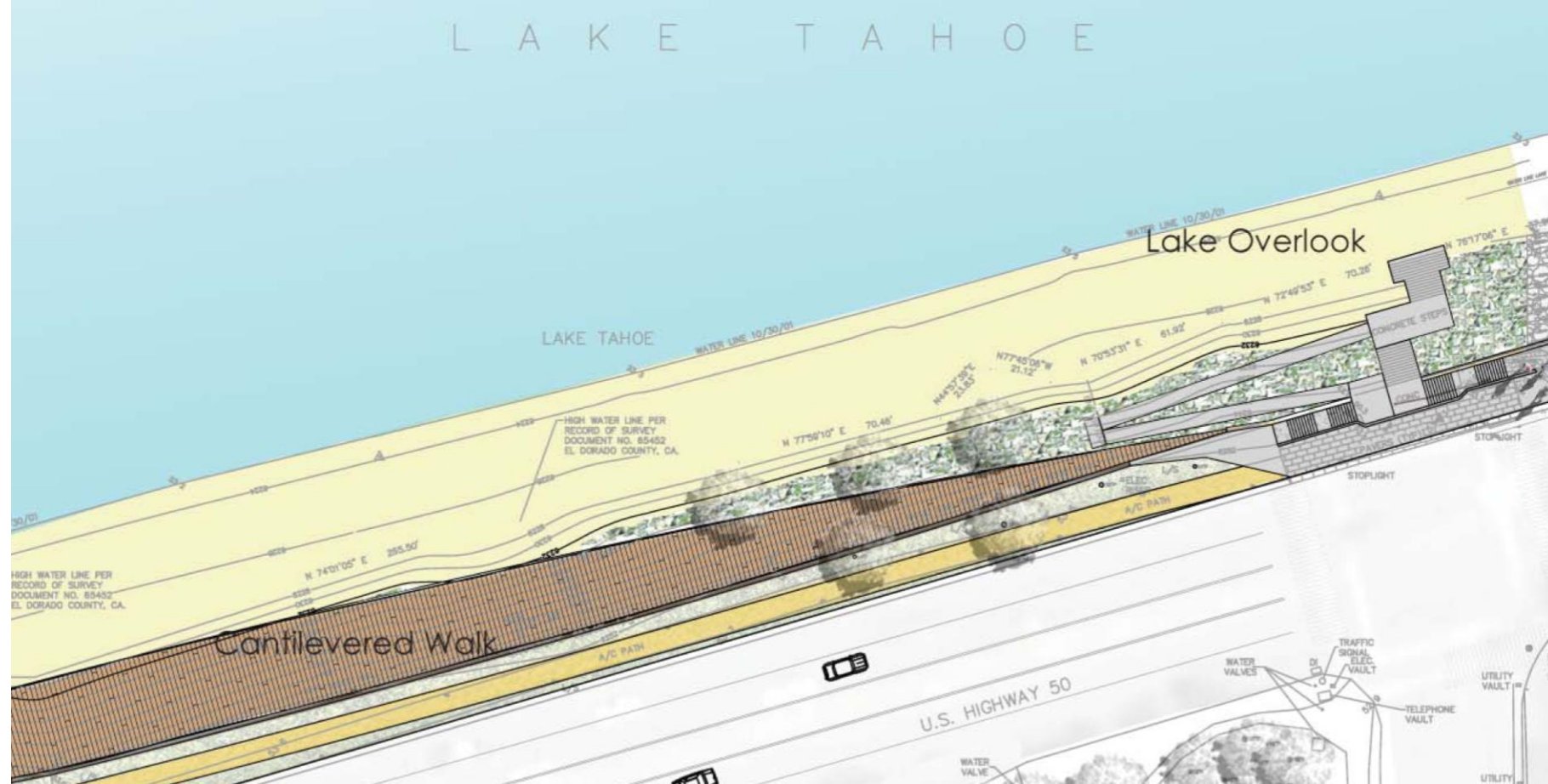
SOUTH LAKE TAHOE 56 ACRE PROJECT



SOUTH LAKE TAHOE 56 ACRE PROJECT



- lake terraces and ADA path
- lakefront plaza
- lakefront picnic areas
- non-motorized boat house and concession building
- cantilevered viewing deck
- **ADA accessible lake observation area**
- future pier and water taxi stop



- lake terraces and ADA path
- lakefront plaza
- lakefront picnic areas
- non-motorized boat house and concession building
- cantilevered viewing deck
- **ADA accessible lake observation area**



SOUTH LAKE TAHOE 56 ACRE PROJECT



SOUTH LAKE TAHOE 56 ACRE PROJECT

next steps



Next Steps

Phase 1 of project

- **Environmental review and permitting of El Dorado Beach portion of project**
- **Detailed cost estimate and Construction drawings for waterfront improvements being prepared**
- **Application package submitted for permitting on August 7**

More detailed study of full 56-acres

- **Economic analysis of revenue potential, operational and construction costs and funding sources**
- **Sustainability analysis including recommended sustainable features and associated cost benefits**
- **Parking and traffic analysis based on final program recommendations**
- **Environmental assessment of onsite forest health**
- **Revised plan to incorporate findings**