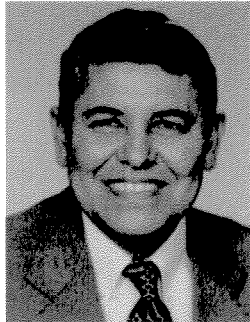


Professional Profile



Sandy Sandoval

Senior Vice President
Investment Services Group
Sandy.sandoval@grubb-ellis.com
916.418.6002 direct
Licensed Real Estate Broker, CA-license # 00677894

EXPERIENCE

- 1978 - Present: Ashwill Burke Commercial Real Estate,
Ilf Thorne Commercial Real Estate
Bishop Hawk Commercial Real Estate,
Bishop Powers, Inc. Commercial Real Estate
Grubb & Ellis

PARTIAL CLIENT LIST / COMPLETED TRANSACTIONS

Chase Manhattan Bank	Citicorp Bank	Fireman's Fund Insurance
State of California	Raley's Supermarket	Kragen Auto Parts
H & R Block	Hollywood Video	Mail Boxes Etc.
Black & Decker	Chicago Title Company	USA Petroleum
Farmer's Merchant Bank	Domino's Pizza	Clothestime
Warehouse Records & DVD's	Domino's Pizza	Mountain Mike's Pizza
Kidder Peabody	Pacific Telephone	Federal Express
Palo Alto Country Club	Central Pacific Mortgage	County of Sacramento

EDUCATION

- Bachelor of Science, California State University 1970-1974

PROFESSIONAL AFFILIATIONS

- United States Navy, Coronado, California 1966-1970 Southeast Asia

COMPLETED TRANSACTIONS



Fair Oaks Shopping Center
8900 Madison Avenue, Fair Oaks



Watt Avenue Executive Plaza
3800 Watt Avenue, Sacramento



Regional Transit Building
2830 G Street, Sacramento



Hazel Ridge Shopping Center
4301 Hazel Avenue, Fair Oaks



Arcade Shopping Center
3400 Watt Avenue, Sacramento



Elk Grove Applebee's
9105 E. Stockton Blvd., Elk Grove



Sunrise Financial Center
5750 Sunrise Blvd, Citrus Heights



Point West Executive Building
1610 Arden Way, Sacramento



West Lodi Self Storage
2650 Lodi Avenue, Lodi



Madison Village Shopping Center
6720 Madison Avenue, Fair Oaks



H Street Professional Building
801 12th Street, Sacramento



Westgate Raley's Shopping Center
333 Lower Sacramento Road, Lodi



Creekside Shopping Center
6029-6085 Greenback Ln, Sacramento



Travelers Office Building
428 J Street, Sacramento



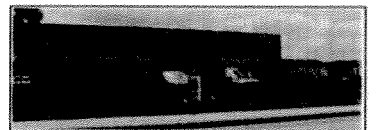
Point East Financial Center
11290 Point East Dr, Rancho Cordova



Gold Creek Shopping Center
4980 Watt Avenue, Sacramento



Haywood Building
200 J Street, Sacramento



Perris Valley Industrial Park
3575 N. Perris Blvd. &
45 E. Morgan Street, Perris



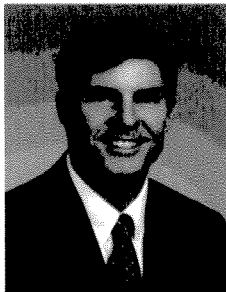
McHenry Shopping Center
2720 McHenry Avenue, Modesto



Raley Industrial Park
Raley Boulevard &
Santa Ana Avenue, Sacramento



Sunrise 50 Plaza
1941 Zinfandel Drive, Rancho Cordova



Greg Redman

Vice President
Investment Services
greg.redman@grubb-ellis.com
916.770.8926 direct

CAREER SUMMARY

Greg has been in the commercial real estate industry over 22 years. He began his real estate career in 1985 as a leasing agent for a 23 story office building in St Louis Missouri. He received his broker's license in 1993 and was the Broker - Officer in California for Hallwood Commercial Real Estate. Greg has spent his entire career specializing in primarily office and industrial buildings and received his Certified Commercial Investment designation in November 1996.

His experience includes office sales and leasing, industrial sales and leasing, retail sales and leasing, land sales, and investment sales. He has been involved in transactions with Heritage Hotel Group, General Electric, Liberty Mutual Insurance, Anteon Corp., Volunteers of America, Boise Cascade, Qwest Communications Corp, Laufen International, Orkin Pest Control, Reed Elsevier, Chicago Title Company, Western Blue Corporation, Wells Publishing, Equity Programs, Paychecks, Reynen and Bardis Development, Krauses Sofa Factory, Dominos Pizza, and numerous other National, Regional, and local companies.

EXPERIENCE

- 2007 - Present: Grubb & Ellis Company
- 2005 - 2007: Bishop Powers Commercial Real Estate
- 2004 – 2005: REIT Management and Research
- 1993 – 2005: Hallwood Commercial Real Estate
- 1985 – 1993: Equitec Properties Company

EDUCATION

- Bachelor Of Science and Business Administration
University of Missouri, Columbia

PROFESSIONAL DEVELOPMENT AND AFFILIATIONS

- I CCIM (Commercial Investment Real Estate Institute) designation in November 1996
- Real Property Administrator (RPA)