

PROPOSED PLANT LIST

Trees						
Sym.	Botanical Name	Common Name	Size (txw)	Container	Water	Qty.
	<i>Arbutus unedo</i>	Strawberry Tree	20' x 15'	15 g.	low	45
	<i>Cedrus deodara</i>	Deodar Cedar	80' x 40'	15 g.	med	4
	<i>Cercis occidentalis</i>	Western Redbud	20' x 20'	15 g.	very low	26
	<i>Lagerstroemia indica</i>	Crape Myrtle	20' x 15'	24" box	low	27
	<i>Platanus x acerifolia</i>	London Plane	60' x 35'	24" box	med	5
	<i>Quercus wislizenii</i>	Interior Live Oak	50' x 50'	24" box	very low	22
	<i>Quercus lobata</i>	Valley Oak	60' x 50'	24" box	low	16

Shrubs						
Botanical Name	Common Name	Size	Container	Water		
<i>Arbutus unedo 'Comata'</i>	Strawberry tree	10' x 8'	5 g.	low		
<i>Arctostaphylos spp.</i>	Manzanita	5' x 7'	5 g.	low		
<i>Carpenteria californica</i>	Bush Anemone	5' x 5'	5 g.	low		
<i>Ceanothus spp.</i>	California Lilac	vaires	1 g.	low		
<i>Cistus x purpureus</i>	Orchid Rockrose	4' x 4'	5 g.	low		
<i>Colomeaster laticus</i>	Colomeaster	6' x 6'	5 g.	low		
<i>Heteromeles arbutifolia</i>	Tayon	10' x 6'	5 g.	low		
<i>Lavendula angustifolia</i>	Lavender	2' x 2'	1 g.	low		
<i>Lupinus caudatus</i>	Slivery Lupine	3' x 4'	1 g.	low		
<i>Mimulus aurantiacus</i>	Orange Monkey Flower	2' x 4'	1 g.	low		
<i>Mulenbergia rigens</i>	Deer Grass	4' x 4'	5 g.	med		
<i>Perovskia atriplicifolia</i>	Russian Sage	2' x 2'	1 g.	med		
<i>Pinus mugo</i>	Mugho Pine	6' x 12'	15 g.	low		
<i>Rhamnus californica 'Eve Case'</i>	Coffeeberry	6' x 6'	5 g.	low		
<i>Ribes sanguineum</i>	Gooseberry	6' x 6'	5 g.	low		
<i>Salvia greggii</i>	Autumn Sage	3' x 3'	5 g.	low		
<i>Spiraea densiflora</i>	Mountain Spirea	2' x 2'	5 g.	mod		
<i>Viburnum tinus</i>	Laurustinus	8' x 4'	5 g.	mod		

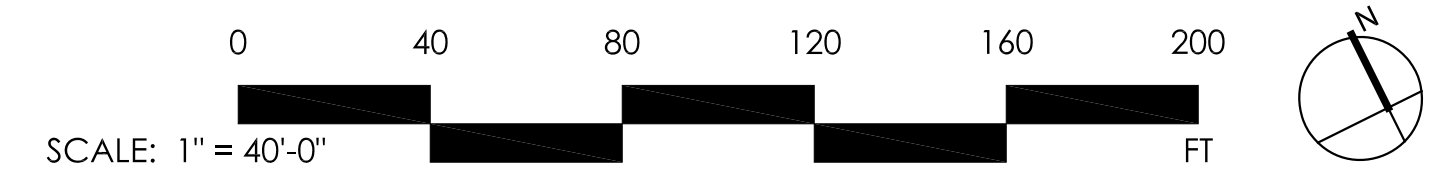
Landscape Notes
 Plants shall be appropriate for the sun, wind, soil compaction, temperatures, and water use.
 Plants shall be grouped in water use zones and coordinated with irrigation plans to minimize the use of water and the placement of irrigation tubing.
 All planters to have top dressing of 3" deep 2" fir bark mulch.

Ground Cover / Massing						
Botanical Name	Common Name	Size	Container	Water Use		
<i>Achillea tomentosa</i>	Wooly Yarrow	1' x 2'	1 g.	low		
<i>Arctostaphylos uva-ursi</i>	Manzanita	2' x 5'	1 g.	low		
<i>Baccharis 'Twin Peaks'</i>	Dwarf Coyote Bush	2' x 7'	1 g.	low		
<i>Ceanothus griseus horizontalis</i>	Carmel Creeper	2' x 10'	1 g.	low		
<i>Colomeaster horizontalis</i>	Colomeaster	2.5' x 10'	1 g.	med		
<i>Juniperus spp.</i>	Juniper	11' x 6'	1 g.	low		
<i>Mahonia repens</i>	Creeeping Mahonia	2' x 5'	1 g.	low		
<i>Rosmarinus o. 'Prostratus'</i>	Rosmary	1.5' x 6'	1 g.	low		

Landscape Requirements
 One tree per 10 parking spaces
 164 parking spaces requires 17 Shade Trees
 77 Shade Trees provided
 50% of trees to be evergreen
 145 total trees w/ 73 of the trees being evergreen (50%)
 3 trees and 6 shrubs required in every 100' of landscape buffer

SHADE CALCULATION

TOTAL PAVED SURFACE AREA	64,440 SF			
REQUIRED AREA FOR SHADE 50% X 64,440 SF	32,220 SF			
TREE SPECIES	QTY. @ FULL	QTY. @ THREE-QUARTERS	QTY. @ HALF	QTY. @ QUARTER
CEDRUS DEODARA	30'-35' SHADE TREE -- @ 962 SF	-- @ 722 SF	4 @ 481 SF	-- @ 241 SF
PLATANUS x ACERIFOLIA	30'-35' SHADE TREE 5 @ 962 SF	-- @ 722 SF	0 @ 481 SF	-- @ 241 SF
QUERCUS LOBATA	30'-35' SHADE TREE -- @ 962 SF	-- @ 722 SF	6 @ 481 SF	-- @ 241 SF
QUERCUS WISLIZENNI	30'-35' SHADE TREE 15 @ 962 SF	5 @ 722 SF	2 @ 481 SF	-- @ 241 SF
ARBUTUS UNEDO	20'-25' SHADE TREE 1 @ 314 SF	-- @ 236 SF	32 @ 157 SF	-- @ 79 SF
LAGERSTROEMIA INDICA	20'-25' SHADE TREE 3 @ 314 SF	3 @ 236 SF	2 @ 157 SF	-- @ 79 SF
	20,496 SF	3,596 SF	11,110 SF	0 SF
TOTAL TREE SHADE AREA				35,202 SF (54%)



CREEKSIDE PLAZA

PLACERVILLE, CA

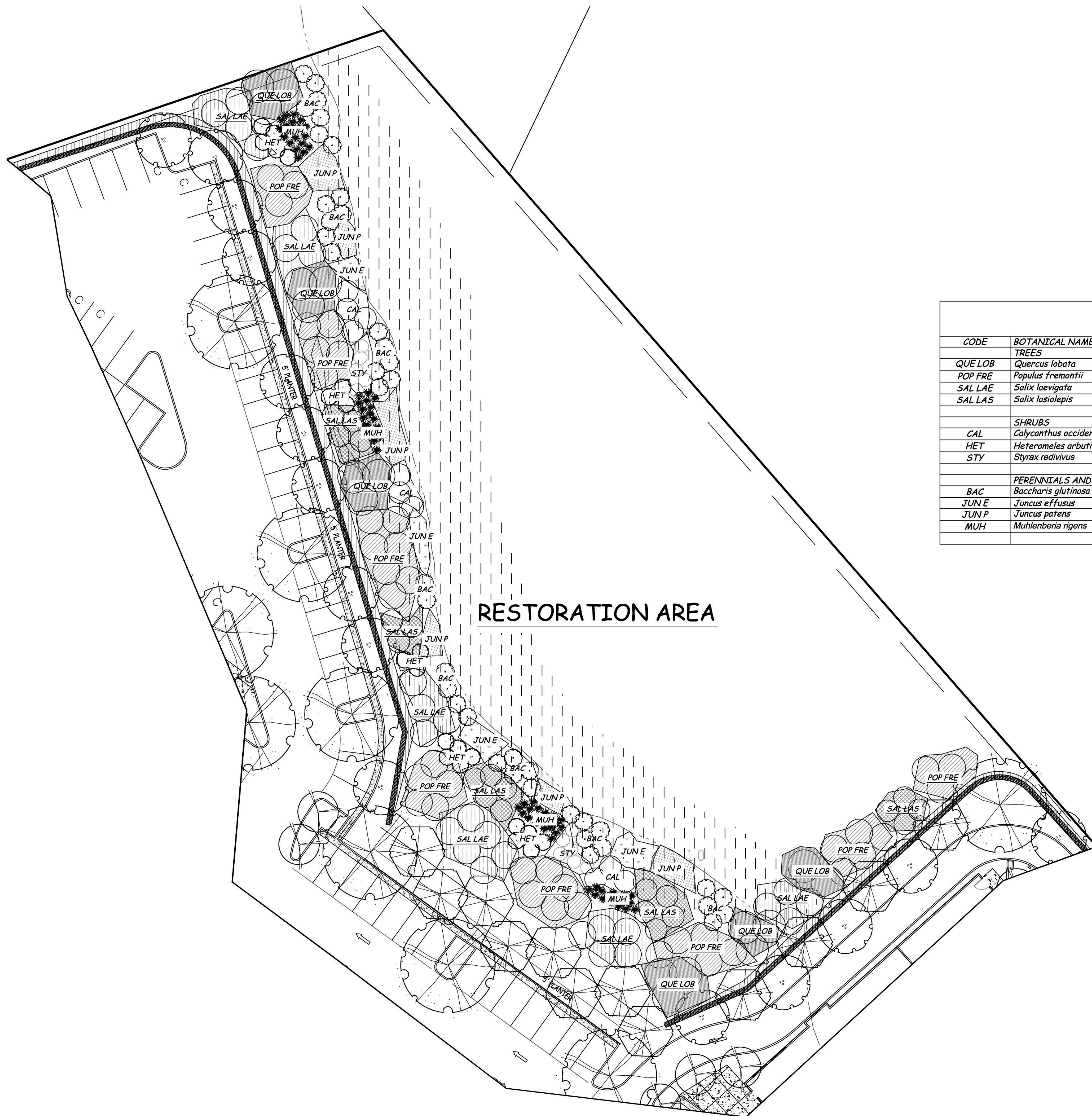


PRELIMINARY LANDSCAPE PLAN

DATE: 01-21-2011
 PROJECT NO: 1029-0001
 SCALE:
 SHEET: **EXHIBIT V**

GRADO EQUITIES VII, LLC
 4330 GOLDEN CENTER DR., STE D
 PLACERVILLE, CA 95667

LPAS
 2484 Natomas Park Drive Suite 100 Sacramento CA 95833
 916 443 0335 lpasdesign.com Architecture + Design



NATIVE PLANT LEGEND						
CODE	BOTANICAL NAME	COMMON NAME	QTY.	SIZE	HABITAT	SPACING
TREES						
QUE LOB	<i>Quercus lobata</i>	Valley Oak	17	1 Gallon	Riparian	10' APART
POP FRE	<i>Populus fremontii</i>	Fremont Cottonwood	22	1 Gallon	Riparian	9' APART
SAL LAE	<i>Salix laevigata</i>	Red Willow	22	1 Gallon	Riparian	9' APART
SAL LAS	<i>Salix lasiolepis</i>	Arroyo Willow	43	1 Gallon	Riparian	8' APART
SHRUBS						
CAL	<i>Calycanthus occidentalis</i>	Spicebush	20	1 Gallon	Edge	7' APART
HET	<i>Heteromeles arbutifolia</i>	Toyon	21	1 Gallon	Upland	5' APART
STY	<i>Styrax redivivus</i>	Snowdrop Bush	11	1 Gallon	Upland	5' APART
PERENNIALS AND GRASSES						
BAC	<i>Baccharis glutinosa</i>	Marsh baccharis	42	1 Gallon	Wetland	6' APART
JUN E	<i>Juncus effusus</i>	Rush	550	Liners	Wetland	12" APART
JUN P	<i>Juncus patens</i>	Spreading or Blue Rush	411	Liners	Wetland	24" APART
MUH	<i>Muhlenberia rigens</i>	Deer Grass	70	1 Gallon	Edge	3' APART

RESTORATION AREA

REVISIONS		DATE	BY
NO.	DESCRIPTION	6/15/10	
1	PHASE 2 LANDSCAPE REVISIONS		
2			
3			
4			

Date: AUGUST 2010
 Scale: 1" = 20'
 Designed by: Teresa Adams
 Drawn by: Teresa Adams
 SHEET NO.

1

EXHIBIT V.1