



RESOLUTION NO.

OF THE BOARD OF SUPERVISORS OF THE COUNTY OF EL DORADO

WHEREAS, on October 20, 2015, this Board held a public hearing after notice thereof, as provided by law, on the request for the establishment of agricultural preserves as set forth herein.

NOW, THEREFORE, BE IT RESOLVED by the Board of Supervisors of the County of El Dorado that this Board does hereby establish the following agricultural preserves comprising the Assessor's Parcel Numbers, as shown in Exhibit A, as set forth herein:

<u>Preserve No.</u>	<u>Owners</u>	<u>Parcel Nos.</u>	<u>Acres</u>	<u>Area</u>
133	Stigall Family Revocable Trust Established June 5, 1990	089-010-02, 089-010-27	111	Lotus
316	Stigall Family Revocable Trust Established June 5, 1990	089-010-29	50	Lotus

PASSED AND ADOPTED by the Board of Supervisors of the County of El Dorado at a regular meeting of said Board, held the ____ day of _____, 20__, by the following vote of said Board:

Attest: James S. Mitrising
Clerk of the Board of Supervisors

Ayes:
Noes:
Absent:

By: _____
Deputy Clerk

_____ Chairman, Board of Supervisors

SECS. 28 TO 33, T.11N., R.10E., M.D.M.

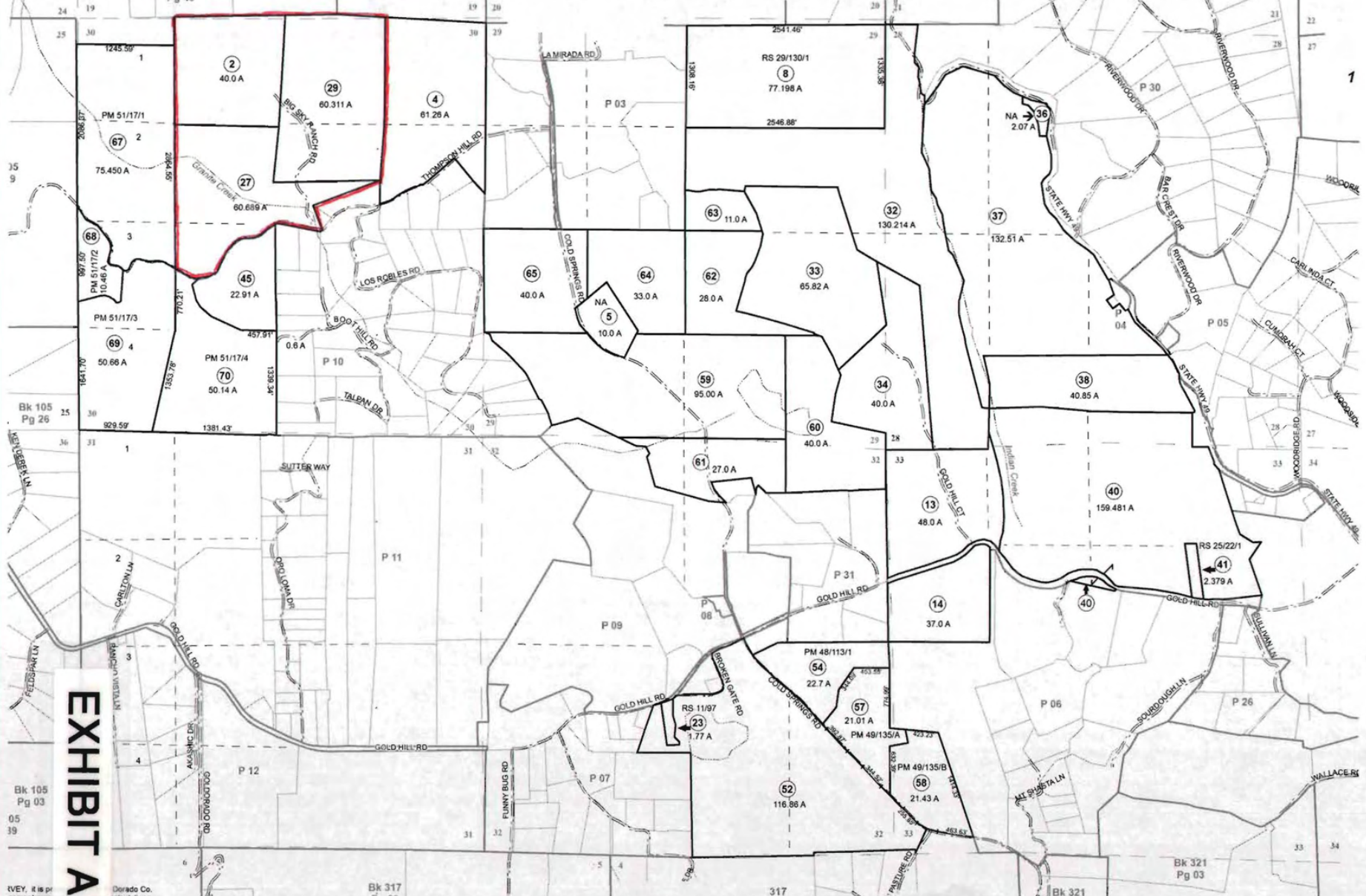


EXHIBIT A

Acreages Are Estimates

Adjacent Map Pages Shown in Grey Text
Assessor's Block Numbers Shown in Ellipses
Assessor's Parcel Numbers Shown in Circles

Rev. Sep 5, 2013

Assessor's Map
County of E