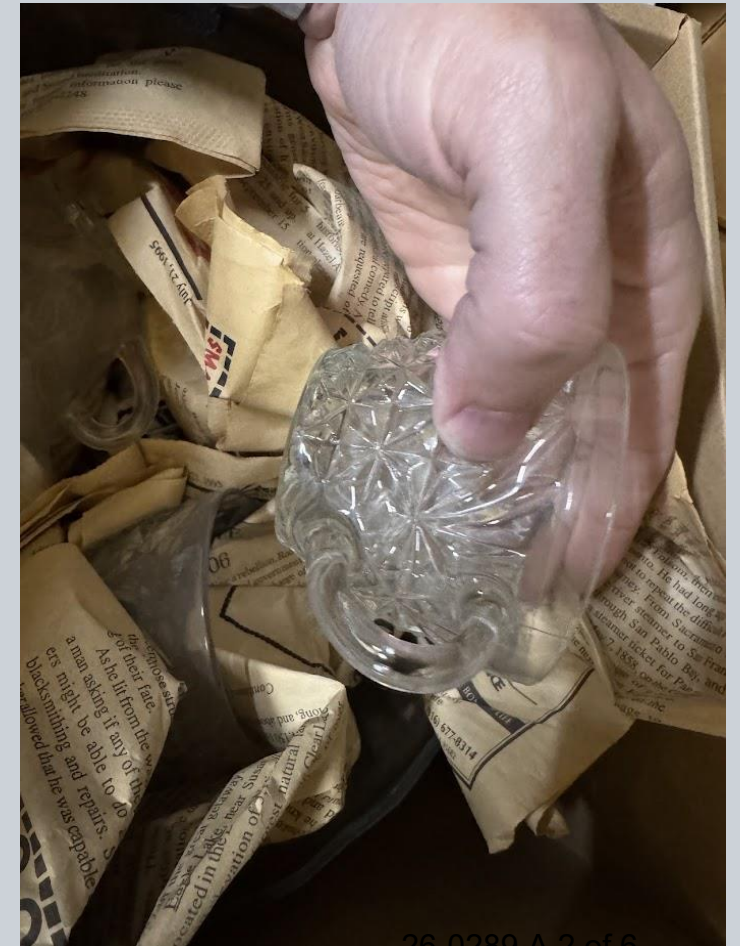


3 pressed glass punch bowls and cups (non-historic)

Item Description(s)	Accession #	Documentation	Provenance	Notes	Recommendation
3 pressed glass punch bowls and cups	No	No	No	Reviewed (and added) by Jacob Rigoli. The items are not historical. They are also of lower quality and have no material value. 2 boxes.	Deaccession

Pressed glass punch bowl and glasses



1 large coffee urn (non-historic)

Item Description(s)	Accession #	Documentation	Provenance	Notes	Recommendation
Large coffee urn	No	Used for functions and stored at the museum.	N/A	Reviewed (and added) by Jacob Rigoli. The item is not historical and has no material value.	Deaccession

Large coffee urn



Pressed Glass Stand Lamp (Fluted stem) & Pattern Glass Pedestal Lamp & extra Pie-crust or Ruffled-top Chimney

Item Description(s)	Accession #	Documentation	Provenance	Notes	Recommendation
<p>1. The Tall Stand Lamp (Fluted Stem) Style: Pressed Glass Stand Lamp. Period: Late 19th Century (c. 1870s–1890s).</p> <p>1. 2. The Ribbed/Swirl Base Lamp Style: Pattern Glass Pedestal Lamp. Period: Late Victorian (c. 1880–1910).</p> <p>1. 3. The "Fancy" Ruffled Chimney Style: Pie-crust or Ruffled-top Chimney. Period: Late 1800s.</p>	N/A	N/A	N/A	<p>Reviewed (and added) by Jacob Rigoli at the request of Kelly Jordan. These three items are classic examples of late 19th-century household lighting, likely dating from the Victorian era (roughly 1870–1900). These appear to have been donated to the El Dorado County Historical Society. There are no accession numbers on the items, nor anywhere on the box. Given that the El Dorado County Historical Museum already maintains a sufficient collection of similar lamps in comparable condition, we recommend formally offering these items back to the El Dorado County Historical Society to ensure they are housed with their rightful owner.</p>	Deaccession

Pressed Glass Stand Lamp (Fluted stem) & Pattern Glass Pedestal Lamp & extra Pie-crust or Ruffled-top Chimney

