



United States Department of Agriculture
Broadband Initiatives Program | Awards Report

January 2011

Advancing Broadband

A Foundation for Strong Rural Communities

Submitted by Jim Bunnell
at Board Hearing of 12813
#4

Investing in Rural America

Rural areas with dispersed populations or demanding terrain generally have difficulty attracting broadband service providers because the fixed cost of delivering broadband service can be too high. Yet broadband is a key to economic growth. For rural businesses, broadband gives access to national and international markets and enables new, small, and home-based businesses to thrive. Broadband access provides rural residents with the connectivity they need to obtain healthcare, education, and many essential goods and services.

The Recovery Act authorized RUS to issue loans and grants to projects that extend broadband service to unserved and underserved rural areas. The funding provided by the Recovery Act is increasing

the availability of broadband and stimulating both short- and long-term economic progress.

RUS completed two BIP funding rounds, making a significant investment in projects that will enhance broadband infrastructure in scores of rural communities.

This represents a critical investment, designed to rebuild and revitalize rural communities. Without this funding, many communities could not cover the costs of providing broadband service to homes, schools, libraries, healthcare providers, colleges, and other anchor institutions.

Project Type	Number of Projects	Grants	Loans	Total Awards
Infrastructure	297	\$2,233,862,109	\$1,191,844,578	\$3,425,706,687
Satellite	4	\$100,000,000	\$0	\$100,000,000
Technical Assistance	19	\$3,384,202	\$0	\$3,384,202
Total Awards	320	\$2,337,246,311	\$1,191,844,578	\$3,529,090,889

Northern Arkansas Telephone Company

Northern Arkansas Broadband

Last Mile

\$2,569,636 Grant

Northern Arkansas Telephone Company will substantially expand the provision of advanced FTTH and ADSL2+ services via a fiber-optic network with combined speeds exceeding 20 Mbps in Marion and Boone counties in rural north central Arkansas. The network will make services available to 725 households, 70 businesses, and 10 anchor institutions. The project will create 95 jobs.

Utopian Wireless Corporation

Utopian Searcy WiMAX Project

Last Mile

\$744,165 Loan

\$2,232,496 Grant

Utopian Wireless Corporation will provide wireless broadband service to two rural underserved communities near Searcy. These rural PFSAs cover approximately 19,391 households, 2,050 businesses, and 111 anchor institutions. Using its licensed 2.5G Hz spectrum, Utopian will deploy a broadband wireless system that features Motorola Mobile WiMAX technology that will support 5.0 and 10 MHz channels. The system includes WiMAX access points, wireless and wired backhaul, ASN-GW, CSN, and an IP core that supports authentication and the routing of traffic to application servers and the Internet. Utopian will offer tiered services with an average minimum wireless downlink speed of at least 1.8 Mbps. The project will create 15 jobs.

Windstream Corporation

Windstream Arkansas, LLC

Last Mile

\$7,285,202 Grant

Windstream Corporation will expand broadband service to unserved customers in rural areas of Arkansas. With this project, Windstream will extend the reach of its broadband network to make services available to 6,111 households, 339 businesses, and 33 anchor institutions. It will provide broadband to last-mile wireline telephone subscribers. Windstream will provide broadband service to community and public service facilities in the PFSAs at discounted rate packages for at least 3 years. Windstream will deploy industry standard DSLAM protocols to provide a minimum of 6.0 Mbps downstream and 786 Kbps upstream data services. The DSLAM will be strategically deployed to reach the greatest number of unserved customers over its existing wireline copper plant. The project will create or save 122 jobs.

CALIFORNIA

Audeamus

Westside Broadband Project for Rural Central California - San Joaquin, Tranquillity, and West Fresno

Fresno

Last Mile Non-remote

\$2,741,505 Loan

\$2,741,505 Grant

5.4 M

Audeamus will build a fiber-based broadband infrastructure for the unserved and underserved communities of San Joaquin and Tranquillity and for a portion of rural west Fresno County. This last-mile project will provide broadband access to approximately 1,352 households, 125 local businesses, and 24 anchor institutions. The project will create or save 93 jobs.

Calaveras Telephone Company

Calaveras

Calaveras Fiber-to-the-Home Broadband Deployment Project

Last Mile

**\$1,226,093 Loan
\$2,860,883 Grant**

4.0 M

Calaveras Telephone Company will deploy FTTH technology to increase the availability of broadband service in Poker Flat, an area south of Copperopolis in Calaveras County. The company will bring a robust FTTH infrastructure to its existing customer footprint in Calaveras County. Deployment is based upon an overbuild and expansion of existing exchange areas as well as an increased transport route to the local Internet POP. The project's PFSA, which lies in the Sierra Nevada foothills, has a unique mixture of broadband users that includes remote workers from nearby economic centers like Stockton, Sacramento, and San Francisco. The project will make services available to 409 households and 4 businesses. It includes upgraded transport infrastructure to handle backhaul for existing and new construction areas and effectively expands the company's broadband footprint. To accommodate the varied demographics and subscriber profiles in the served areas, Calaveras will use several service offerings, ranging from 1.5 Mbps to 50 Mbps. The network will incorporate GPON and active fiber infrastructure with existing landline telephone switching. The project will create or save eight jobs.

Cal-Ore Communications, Inc.

SISKIYOU

North Siskiyou Wireless Broadband Last Mile

**\$446,600 Loan
\$1,339,800 Grant**

1.8 M

Cal-Ore Communications, Inc., and Cal-Ore Telephone Company will cooperate to build and manage a last-mile wireless broadband project to serve north central Siskiyou County. The general mountainous terrain combined with dense stands of juniper trees makes wireless coverage difficult and requires additional radio sites to achieve coverage across the area. The project will also provide IP voice services over a wireless network. The PFSA includes 2,022 households and 365 businesses that are predominantly farms, ranches, and other agricultural entities, and 27 anchor institutions. The project will provide wireless broadband to unserved and underserved communities and enhanced backhaul capacity to neighboring blocks served by Cal-Ore Communications and Cal-Ore Telephone Company. The project will create five jobs.

Ponderosa Cablevision

Millerton Project

Last Mile Non-remote

**\$1,926,431 Loan
\$1,926,431 Grant**

Ponderosa Cablevision will deploy FTTP in a 31-square-mile area adjacent to Ponderosa's current service territory. The project will make telemedicine and online education applications accessible, a true benefit in an area where reaching the closest medical and school facilities requires a 45-minute drive. The network will make services available to 693 households. The project will create or save 34 jobs.

Nevada County
2.5 M

Smarter Broadband

Smarter Broadband Project
Last Mile
\$624,681 Loan
\$1,874,043 Grant

Smarter Broadband will provide high-speed broadband access to western Nevada County over 435 square miles of rural, mountainous, and wooded territory. Smarter Broadband operates a network of wireless access points spanning multiple towers throughout the PFSA. The company will deliver speeds up to 6 Mbps and more to this largely underserved area. The project will make services available to 14,075 households, 3,581 businesses, and 298 anchor institutions. The project will create 10 jobs.

Softcom Internet Communications, Inc.

Softcom Rural Broadband Expansion Project
Last Mile
\$1,689,710 Loan
\$5,069,125 Grant

8.0 M
Softcom

Softcom Internet Communications, Inc., will provide broadband service speeds of 3 Mbps downstream and 1 Mbps upstream to an underserved rural area in Sacramento and San Joaquin counties in north central California. The project will cover 378 square miles and will make services available to 6,001 households, 4,266 businesses, and 5 anchor institutions. The project network is based on Softcom's second-generation wireless platform, a proven platform that has been in operation more than 3 years. The project consists of augmenting and expanding the coverage of this network to provide 100 percent broadband availability throughout the entire service area. The project will create 38 jobs.

San Joaquin

COLORADO

Delta County Tele-Com, Inc.

Delta County Tele-Com, Inc., Broadband Project to Serve Rural Unserved Establishments
Last Mile
\$1,826,979 Grant

Delta County Tele-Com, Inc. (Delta County Tel), a subsidiary of TDS Telecom, will provide high-speed broadband service to three 100 percent rural PFSA's with four communities in its service territory. These PFSA's have 540 premises (495 households and 45 businesses) with no access to broadband service. Delta County Tel is the State-certified ILEC in Colorado. As engineered, the network will deploy Ethernet-over-copper technology to its fullest potential, provide VDSL2 access devices packaged in an FTTH configuration, upgrade access in the central office to support the extension of the broadband networks to these remote areas, use PON FTTH where economically feasible, and allow future PON upgrades without needing to rebuild the transport routes. The target speed is 20 Mbps (upstream and downstream combined) or more DSL service. This project will create or save 48 jobs.

Nunn Telephone Company

Nunn Rural Broadband Project
Last Mile
\$1,293,125 Loan
\$3,879,375 Grant

Nunn Telephone Company will provide high-speed broadband service to rural residents and businesses in north central Colorado, utilizing FTTH technologies. The network will make services available to 373 households, 191 businesses, and 3 anchor institutions. The project will create 20 jobs.

CSL Connection – A quarterly publication of the California State Library

Heritage Railway

469 in U.S.

 [Printable Version](#)CALIFORNIA
STATE LIBRARY
FOUNDED 1930

TABLE OF CONTENTS

- State Librarian Update
- November CLA reception at the CSL
- Volunteers busy at Governor's Conference for Women
- State Spotlight
- Californiana for the Young & Young at Heart
- CSL Research Bureau leads environmental field trip
- CSL supports Local History Digital Resources Project
- Braille and Talking Books Library now offers digital books
- New and renovated library openings around the state
- CCHE supports famous Sierra Train restoration
- Field Feedback
- Return to Connection Home Page

CONTACT INFO

California Cultural and Historic Endowment supports famous Sierra Train restoration

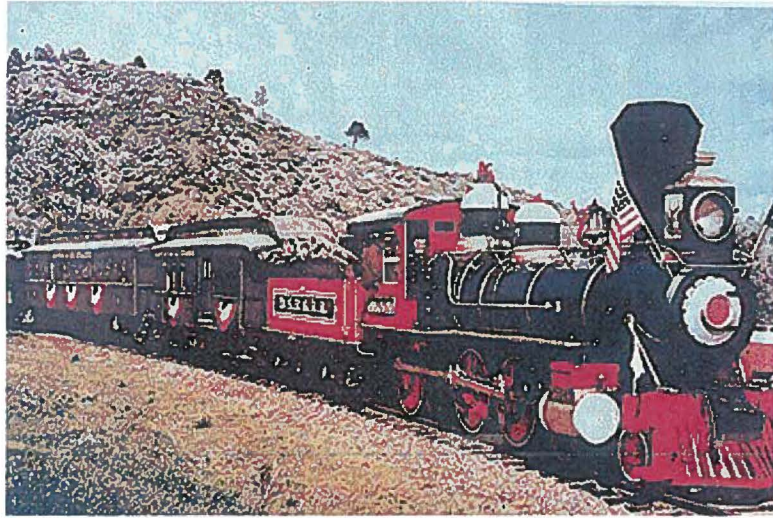
The Sierra Railway steam locomotive No. 3 went into business in 1897 when it pulled its first passenger train through California's Gold Country. Sierra No.3 really hit its stride though when Hollywood moviemakers, after first using it in 1919's *Red Glove*, made it the star of 200 movies and television programs in the 20th century.



Sierra No. 3 at Railtown 1897 in recent years.
(Photo courtesy – California State Railroad Museum)

Sierra No. 3 has been in *High Noon*, *The Great Race*, *Bound for Glory*, *Back to the Future III* and *Unforgiven*. It has also appeared on television, in *Lone Ranger*, *Tales of Wells Fargo*, *Petticoat Junction*, *Rawhide*, *Death Valley Days*, *Lassie*, *Gunsmoke*, *Bonanza*, *The Wild, Wild West*, *Little House on the Prairie* and in various commercials.

Today, Sierra No. 3, one of the most recognizable steam locomotives in the world, needs critical restoration work. It lies dismantled in *Railtown 1897* State Historic Park in historic Jamestown, California's only preserved steam-era shortline railroad roundhouse complex.



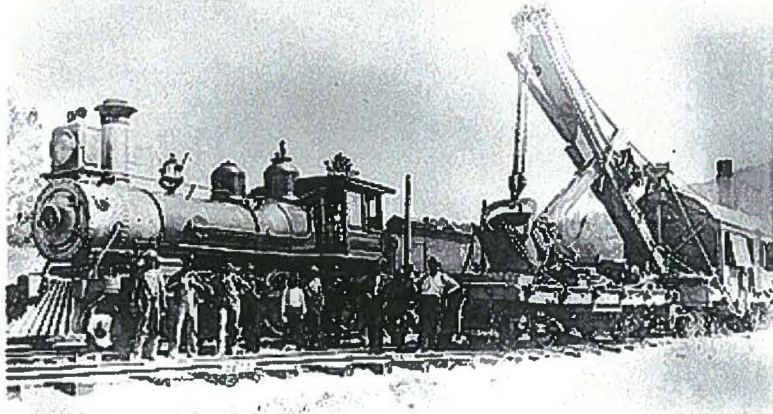
Sierra No. 3 in scene from Petticoat Junction TV series (1960).
(Photo courtesy – California State Railroad Museum)

A grant from the California Cultural and Historic Endowment (CCHE) will help fund the restoration Sierra No. 3 so critically needs.

300,000

In its Round Two grant distribution, the CCHE allowed \$300,000 to the California State Railroad Museum Foundation (CSRMF), to help restore Sierra No. 3 to its 1929 appearance; to bring the locomotive into compliance with new Federal Railroad Administration (FRA) operating standards; to display and interpret it at Railtown 1897 SHP; and to steam it up for Hollywood events, excursion rides, and new filming engagements.

The restored Sierra No. 3 will enhance heritage tourism and historic preservation in Tuolumne County. Sierra No. 3 will draw to rural California children, teachers, adult learners, and tourists who want to see this "movie star." While in Railtown 1897 State Historic Park, visitors will discover the rich cultural legacy of California's railroads.



Construction of Sierra Railway trackage circa 1904 as Sierra No.3 poses proudly with a steam shovel and members of the crew.

(Photo courtesy – California State Railroad Museum)

For more information about Railtown 1897 State Historic Park please visit <http://www.californiastaterailroadmuseum.org/default.asp>.

About the California Cultural and Historical Endowment

Sunday
1/27/2013

how may we serve you...

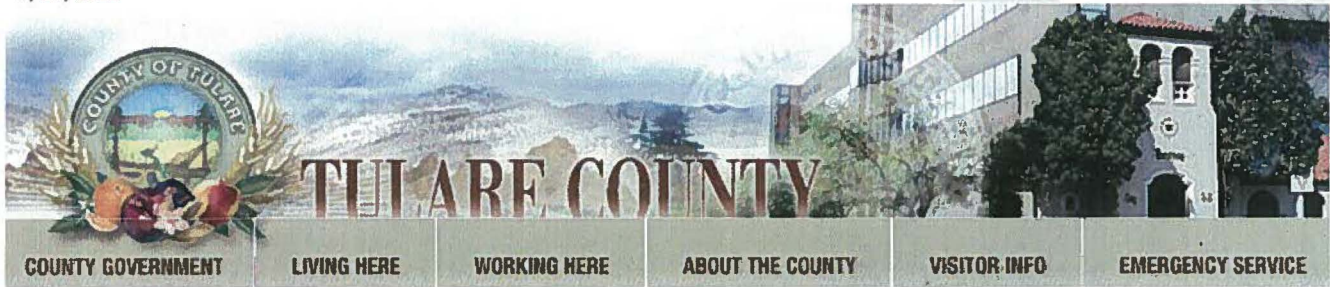
County Services

CONTACT US

SITMAP

SEARCH...

GO



... serving the people of Tulare County.

Home **News**

[Return to Previous Page](#)

[EMAIL THIS PAGE](#)

[PRINT THIS PAGE](#)

[Low Graphics Version](#)

Mooney Grove Park & Museum Plan moves forward!



The public is invited to attend a presentation on the draft Mooney Grove Park & Museum 20 Year Master Plan to be held at 5 p.m. on Wednesday, July 23rd in the Board of Supervisors' Chambers located at 2800 W. Burrel Ave. in Visalia.

Building on public input gathered at the community workshop held in late June, during the July 23 meeting the master plan design consultants will:

- Preview the draft park master plan.
- Report back on public comments and recommendations received so far.
- Identify elements of the master plan that need more study.

The County is working with consultants to accomplish three tasks:

- Develop a Mooney Grove Park Master Plan, a road map that will guide County efforts to manage activities in the park during the next two decades.
- Design and construct the new Farm Labor and History of Agriculture Museum.*
- Evaluate the condition of the existing Tulare County Museum building and make recommendations for any needed repairs or the eventual replacement of the 59-year-old structure.

*In 2006, with cooperation from Tulare County, the Tulare County Historical Society was awarded a California Council and Historical Endowment (CCHHE) grant for \$1,450,000. These funds are being used to construct a 17,000 sq. ft. two-story building at the Tulare County Museum grounds. This state-of-the-art facility will showcase our county's rich history of farm labor and agriculture. The first floor will be 10,000 sq. ft., and will be completely finished with the CCHHE grant funds and additional funding from the County of Tulare and local donations. The second floor, 7,000 sq. ft. will be shelled space for future expansion of Museum facilities/services as the need arises.

[County Government](#) | [Living Here](#) | [Working Here](#) | [About the County](#) | [Visitor Info](#) | [Emergency Service](#)

Send comments to: TCWebmaster@co.tulare.ca.us

© 2008 TULARE COUNTY, CA

Powered Civica

by:



Home » Interests » History » Railroad Attractions: Excursion Trains, Scenic Railway Tours; Railroad Museums; Historic Railroad

metroPCS Galaxy S® III Unlimited 4G^{LTE} for \$60 a month. Tap to share 4.8" HD screen Samsung GALAXY S III BUY NOW

with our locator apps for iOS and Android! [Click here](#)

Railroad Attractions: Excursion Trains, Scenic Railway Tours; Railroad Museums; Historic Railroad Locations Locations Locator Map and Directory

If you're looking to find the closest Railroad Attractions: Excursion Trains, Scenic Railway Tours; Railroad Museums; Historic Railroad Locations near you, you've come to the right place. Use our Railroad Attractions: Excursion Trains, Scenic Railway Tours; Railroad Museums; Historic Railroad Locations directory and Railroad Attractions: Excursion Trains, Scenic Railway Tours; Railroad Museums; Historic Railroad Locations locator map to view all of our 469 Railroad Attractions: Excursion Trains, Scenic Railway Tours; Railroad Museums; Historic Railroad Locations locations and listings, and check individual listings for hours of operation, contact info, visitor reviews and photos, and more. [Click here to add any Railroad Attractions: Excursion Trains, Scenic Railway Tours; Railroad Museums; Historic Railroad Locations](#) that we've missed by adding it to our directory of Railroad Attractions: Excursion Trains, Scenic Railway Tours; Railroad Museums; Historic Railroad Locations places. While you're here, be sure to check out our huge list of related locator categories for finding other History locations.

Rockies Train Vacations

www.travelalberta.us

Train Trip of a Lifetime Through the Canadian Rocky Mountains.



Do you have an iPhone or other iDevice? Be sure to download our [Lighthouse Locator app](#).

AdChoices ▾

Rockies Train Vacations

www.travelalberta.us

Train Trip of a Lifetime Through the Canadian Rocky Mountains.



Railroad Attractions: Excursion Trains, Scenic Railway Tours; Railroad Museums; Historic Railroad Locations location map:



More Search Options

- [Go to Railroad Attractions: Excursion Trains, Scenic Railway Tours; Railroad Museums; Historic Railroad Locations directory](#)

Enter a location for a local Railroad Attractions: Excursion Trains, Scenic Railway Tours; Railroad Museums; Historic Railroad Locations map search

▸

▸

▸

More to Do

About Railroad Attractions: Excursion Trains, Scenic Railway Tours; Railroad Museums; Historic Railroad Locations

From Wikipedia

A railfan or rail buff, railway enthusiast, or trainpotter, is a person who is typically strongly interested, in an amateur capacity, in railroads. Railfans can be found worldwide. Railfans can also be retired career railroaders who still share a love for watching trains as well.

Heritage Railway

Heritage railways are usually railway

Rockies Train Vacations

www.travelalberta.us

Train Trip of a Lifetime Through the Canadian Rocky Mountains.



Scenic Tours by Train

TrainToursVacationsToGo.com

The world's best multi-day train vacations. Best price guarantee.



Train Schedules & Prices

easytransitnow.com

Get Train Routes, Schedules & Fares Free With EasyTransitNow's Toolbar!



Get the Lighthouse Locator iPhone app

Visit the App Store and download the Lighthouse Locator app for your iPhone, iPod Touch, or iPad.

Lighthouse Locator is coming to Android soon, [click here for more information](#)

Go to a City Map

- | | |
|-----------------------------|--------------------------------|
| Atlanta | New York |
| Boston | Philadelphia |
| Chicago | Phoenix |
| Dallas | San Antonio |
| Denver | San Diego |
| Houston | San Francisco |
| Las Vegas | Seattle |
| Los Angeles | Washington, DC |

Heritage Grants

Since 1991, the National Railway Historical Society has been giving away annual grants for projects which preserve, research, educate, or publish railway history.

RAILWAY HERITAGE GRANTS

Since 1991, the NRHS has provided a half million dollars to rail preservation efforts. Hundreds of grants to NRHS Chapters and other organizations not affiliated with

The NRHS Railway Heritage Grants Program provides financial support to projects for education about railway history. This includes grants for stabilization and restoration of locomotives and steam trains and diesel locomotives, railway buildings and for train records and train pictures. Although most grants in the past have been made for projects in research, education, and publications.

The largest numbers of grants have been for preservation of:

- Rail equipment – locomotives (both steam and diesel), passenger cars, freight cars
- Railway depots and towers
- Archival documents, photographs and pictures (train pictures, railway pictures)

How to Apply for an NRHS Railway Heritage Grant

Application forms, which must be used, are available each fall for downloading. Detailed instructions and rules. The deadline for submitting applications, posted annually. Preservation grant awards are typically announced at the Annual NRHS Convention.