

January 8, 2019

County of El Dorado Board of Supervisors  
330 Fair Lane  
Placerville, CA 95667

**RE: CPU18-0005/Quantum Care Place Revised Site Plan and Withdrawal of Appeal**

Dear County Supervisors:

On October 11, 2018 the Capital SouthEast Connector Joint Powers Authority (the "Connector") submitted an appeal regarding the El Dorado Planning Commission's approval of the Conditional Use Permit, File Number CUP18-0005, application submitted by Quantum Care Place EDH, LLC ("Quantum"). Since filing of the appeal, the Connector, Quantum and El Dorado County staff have worked to resolve all concerns related to the appeal and Quantum and the Connector have agreed upon the revised site plan enclosed herein (the "Site Plan").

The Connector hereby agrees to rescind and withdraw its October 11, 2018 appeal subject to the El Dorado County Planning Director's approval of the Site Plan. We would like to thank El Dorado County staff for their efforts and commitment to resolving this matter.

Sincerely,



Derek Minnema  
Executive Director  
Capital SouthEast Connector JPA

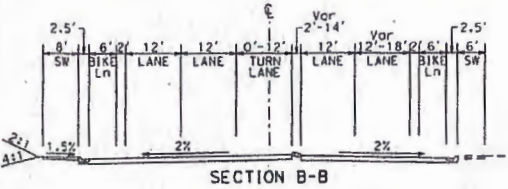
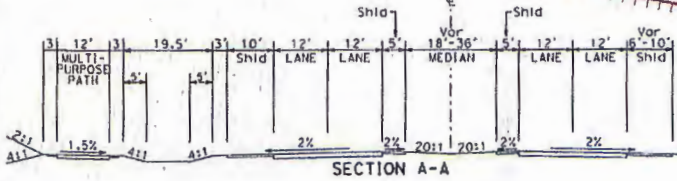
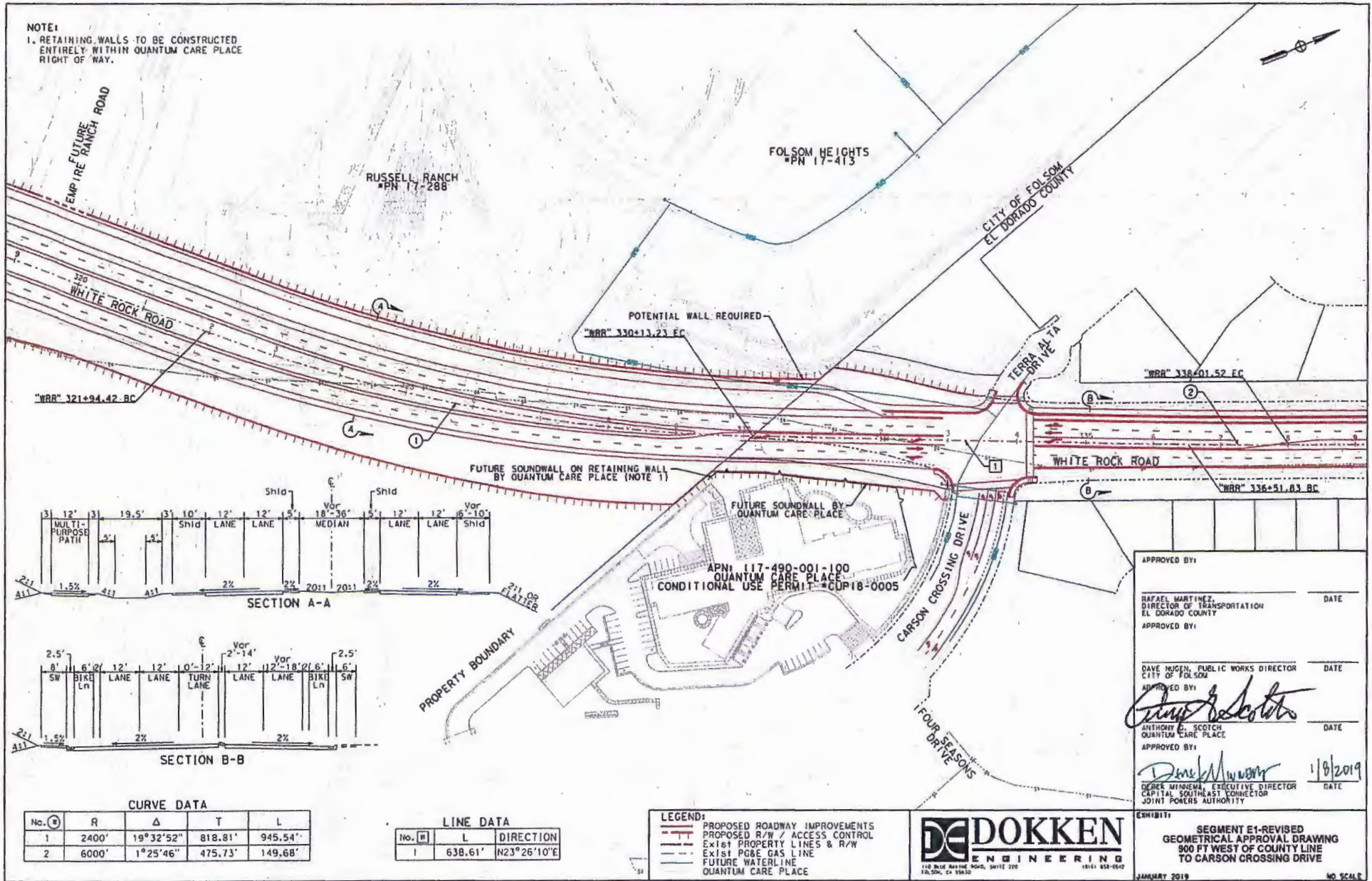
Sincerely,



Anthony Scotch  
Director of Development  
Quantum Care Place, EDH

Enclosure

NOTE:  
 1. RETAINING WALLS TO BE CONSTRUCTED ENTIRELY WITHIN QUANTUM CARE PLACE RIGHT OF WAY.



CURVE DATA				
No.	R	Δ	T	L
1	2400'	19°32'52"	818.81'	945.54'
2	6000'	1°25'46"	475.73'	149.68'

LINE DATA			
No.	PI	L	DIRECTION
1		638.61'	N23°26'10"E

- LEGEND:**
- PROPOSED ROADWAY IMPROVEMENTS
  - PROPOSED R/W / ACCESS CONTROL
  - EXIST PROPERTY LINES & R/W
  - EXIST PGE GAS LINE
  - FUTURE WATERLINE
  - QUANTUM CARE PLACE

**DE DOKKEN**  
 ENGINEERING  
 110 BLUE MARINE ROAD, SUITE 200  
 FOLSOM, CA 95630

APPROVED BY: \_\_\_\_\_ DATE \_\_\_\_\_

RAFAEL MARTINEZ, DIRECTOR OF TRANSPORTATION  
 EL DORADO COUNTY

APPROVED BY: \_\_\_\_\_ DATE \_\_\_\_\_

DAVE HUGEN, PUBLIC WORKS DIRECTOR  
 CITY OF FOLSOM

APPROVED BY: *[Signature]* DATE \_\_\_\_\_

ANTHONY E. SCOTCH, QUANTUM CARE PLACE

APPROVED BY: *[Signature]* DATE 1/8/2019

DEBER WINNEVA, EXECUTIVE DIRECTOR  
 CAPITAL SOUTHEAST CONNECTOR  
 JOINT POWERS AUTHORITY

EXHIBIT: SEGMENT E1-REVISED GEOMETRICAL APPROVAL DRAWING 900 FT WEST OF COUNTY LINE TO CARSON CROSSING DRIVE

JANUARY 2019 NO SCALE