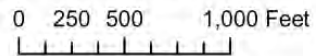


Z24-0005 Diamond Springs Park Rezone  
Exhibit A - Project Vicinity Map



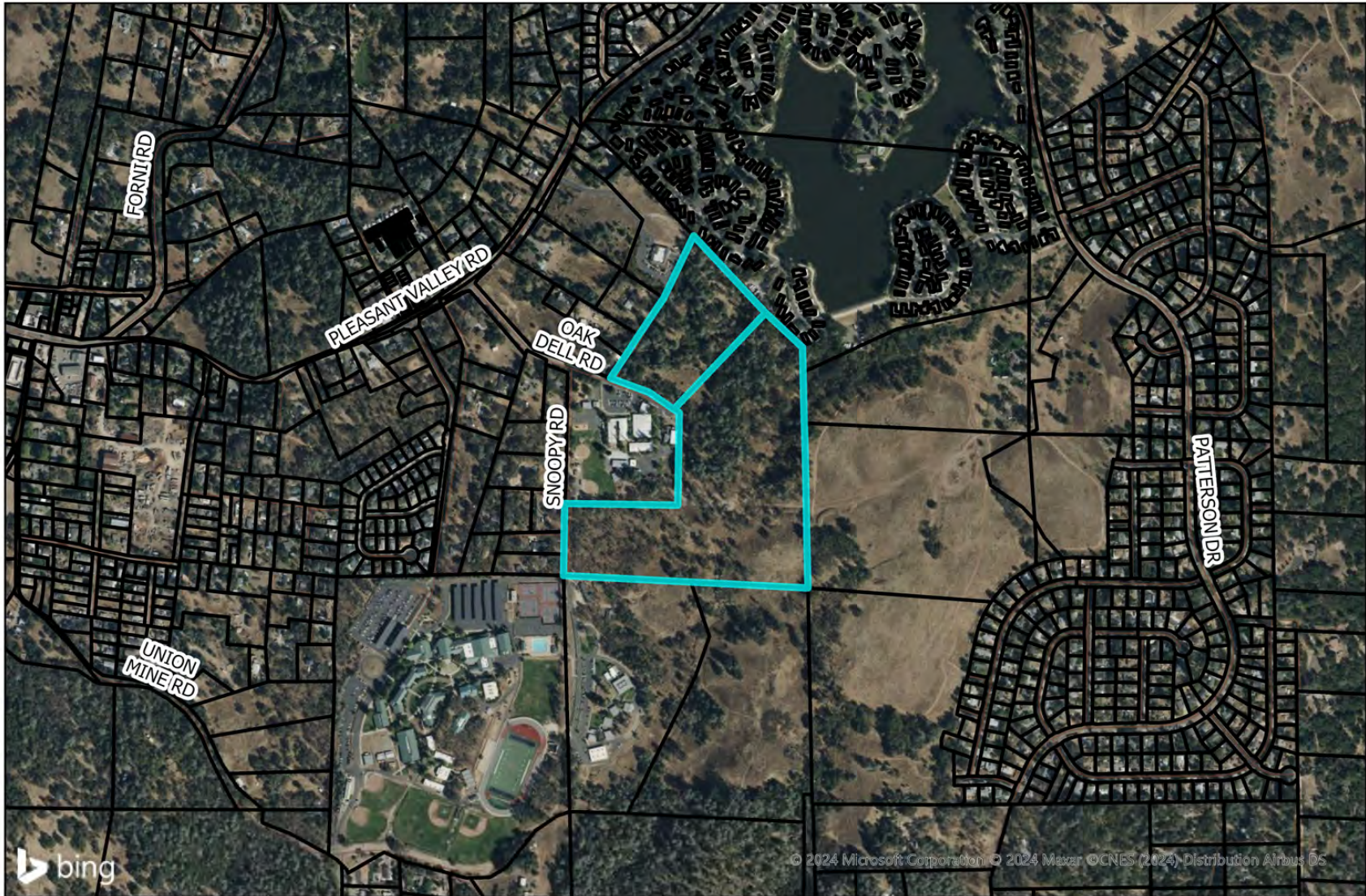
APN 331-400-002-000, 331-301-019-000

Disclaimer: Parcel boundaries in this map are illustrative only and not considered the legal boundary.



Map created on December 11, 2024.

Z24-0005 Diamond Springs Park Rezone  
Exhibit B - Aerial Map



APN 331-400-002-000, 331-301-019-000

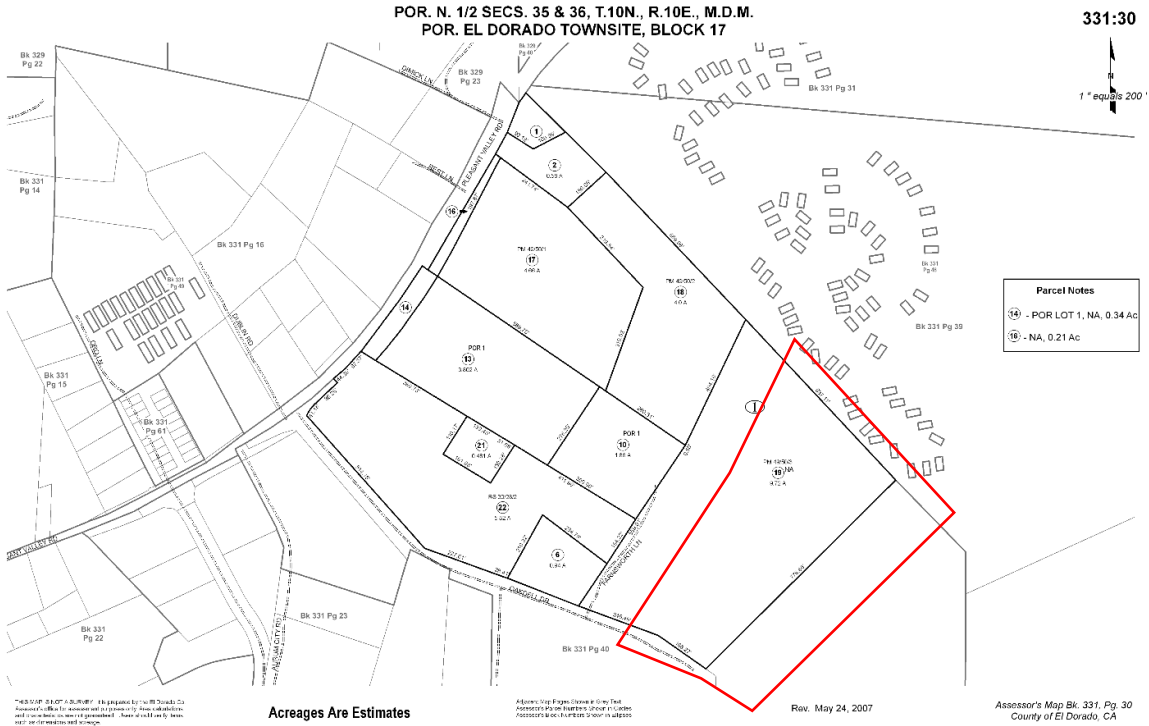
Disclaimer: Parcel boundaries in this map are illustrative only and not considered the legal boundary.



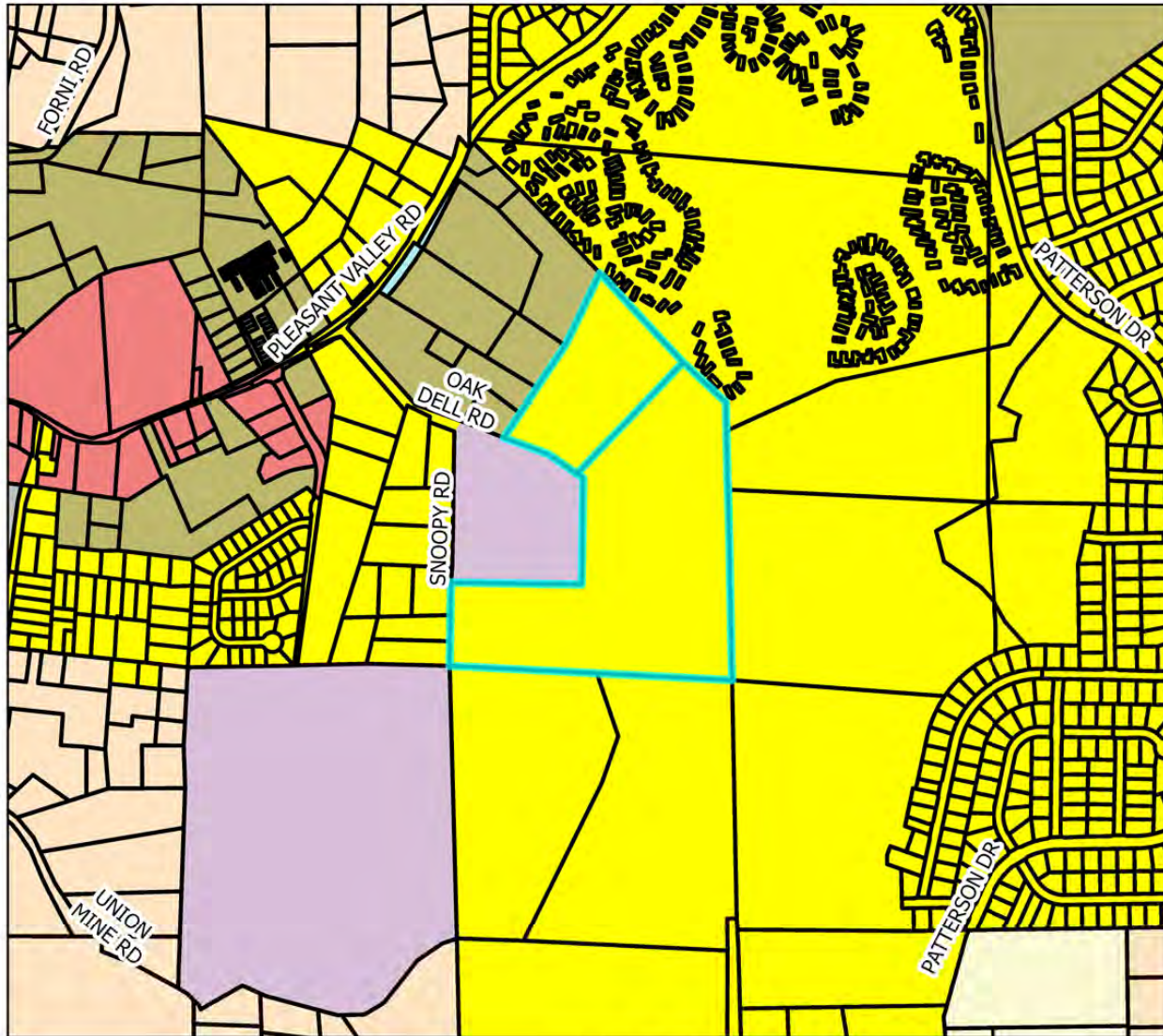
0 250 500 1,000 Feet

Map created on December 11, 2024.

# Z24-0005 Diamond Springs Park Rezone Exhibit C - Assessor's Parcel Maps



Z24-0005 Diamond Springs Park Rezone  
 Exhibit D - General Plan Land Use Map



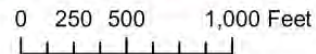
Legend

Land Use Designations

- Commercial (C)
- High Density Residential (HDR)
- Industrial (I)
- Low Density Residential (LDR)
- Medium Density Residential (MDR)
- Multi-Family Residential (MFR)
- Open Space (OS)
- Public Facilities (PF)
- Parcel Lines
- Roads

APN 331-400-002-000, 331-301-019-000

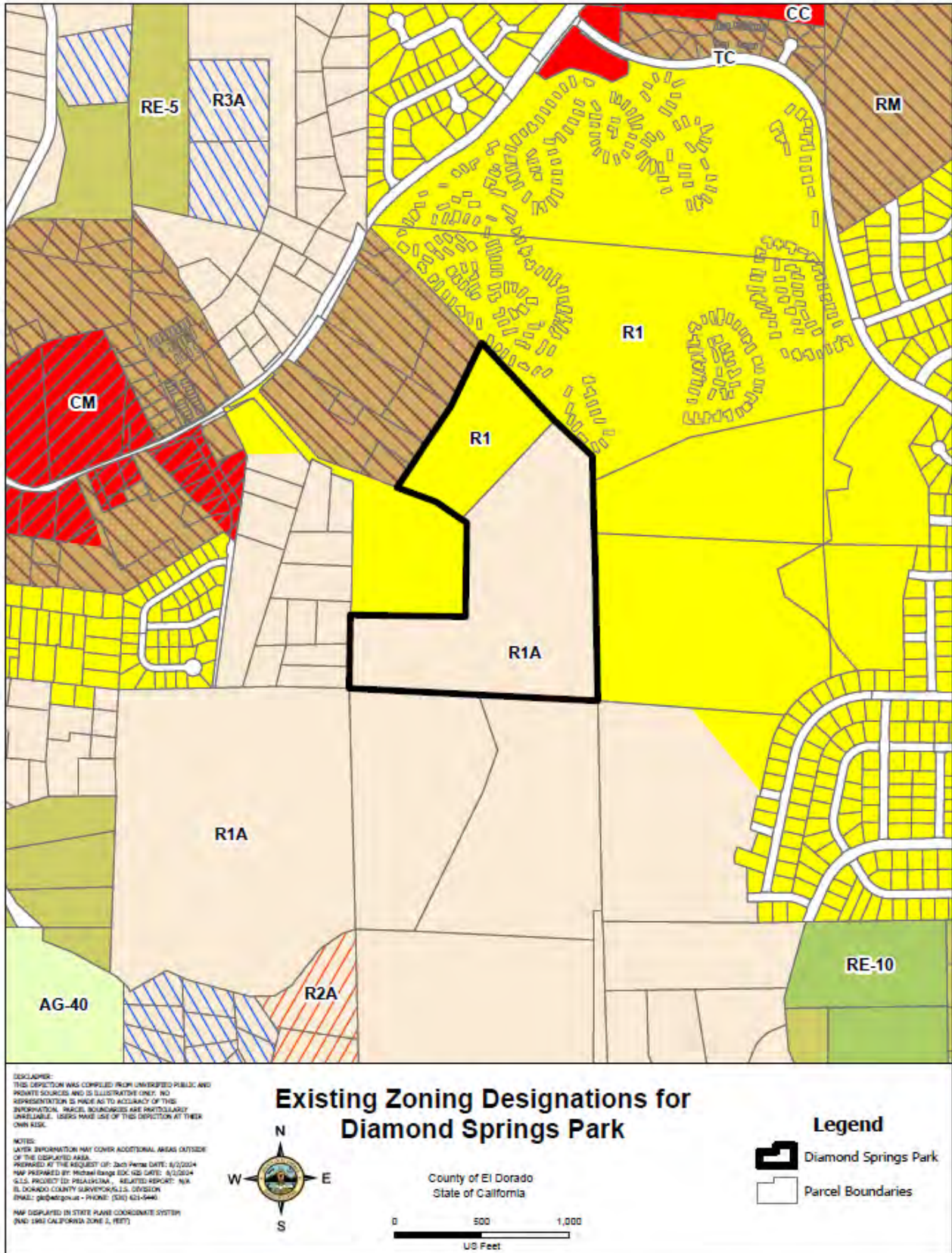
Disclaimer: Parcel boundaries in this map are illustrative only and not considered the legal boundary.



Map created on December 11, 2024.

# Z24-0005 Diamond Springs Park Rezone

## Exhibit E – Existing Zoning Map



# Z24-0005 Diamond Springs Park Rezone

## Exhibit F – Proposed Zoning Map

