

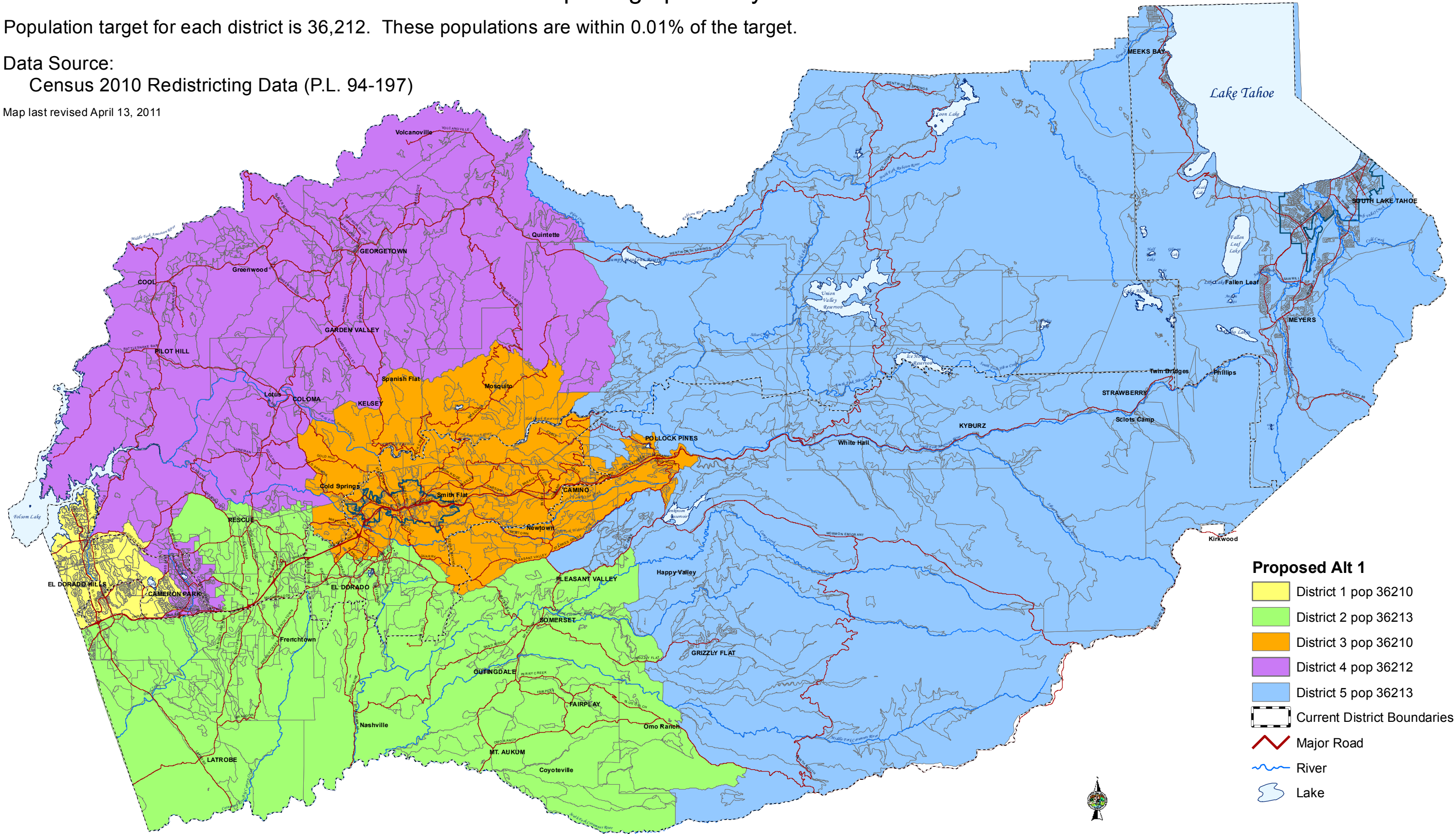
# Alternative 1 South Lake Tahoe District picking up Grizzly Flat

Population target for each district is 36,212. These populations are within 0.01% of the target.

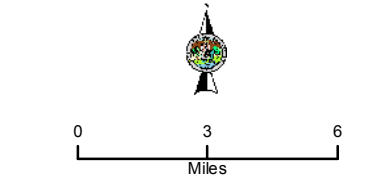
Data Source:

Census 2010 Redistricting Data (P.L. 94-197)

Map last revised April 13, 2011



- Proposed Alt 1**
- District 1 pop 36210
  - District 2 pop 36213
  - District 3 pop 36210
  - District 4 pop 36212
  - District 5 pop 36213
  - Current District Boundaries
  - Major Road
  - River
  - Lake



Map displayed in State Plane Coordinate System (NAD 1983 California Zone 2, feet)

County of El Dorado  
State of California