

# EL DORADO WESTERN RAILROAD

## EL DORADO COUNTY HISTORICAL MUSEUM'S LIVING HISTORY PROGRAM



El Dorado County Historical Museum  
104 Placerville Dr. (next to the Fairgrounds)  
Placerville, CA

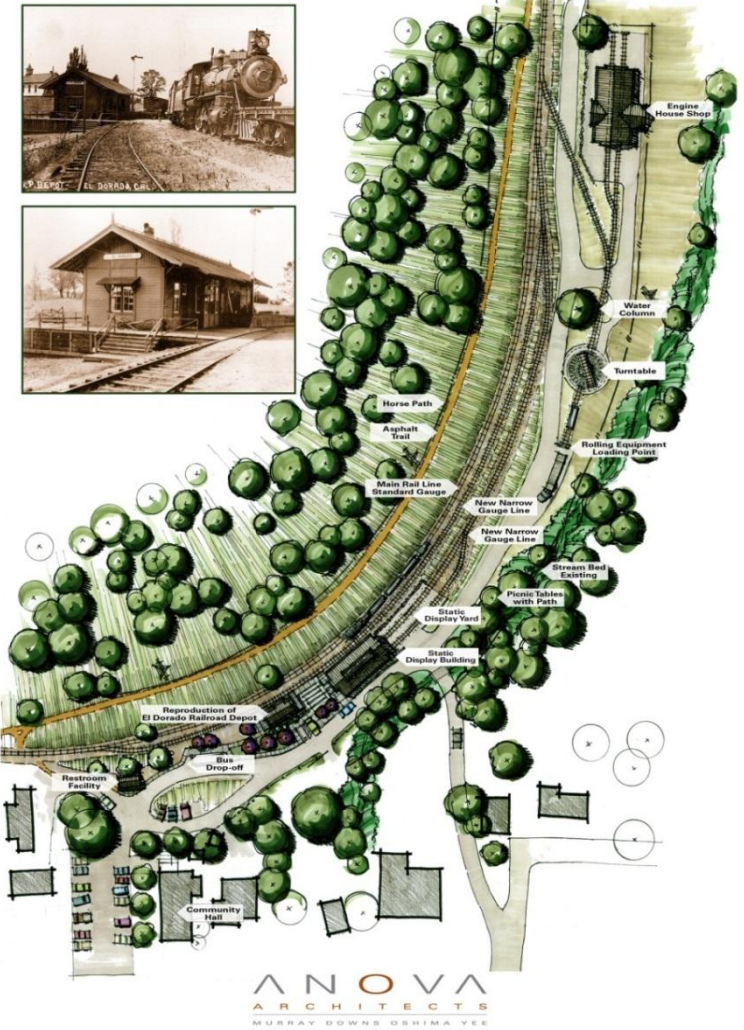






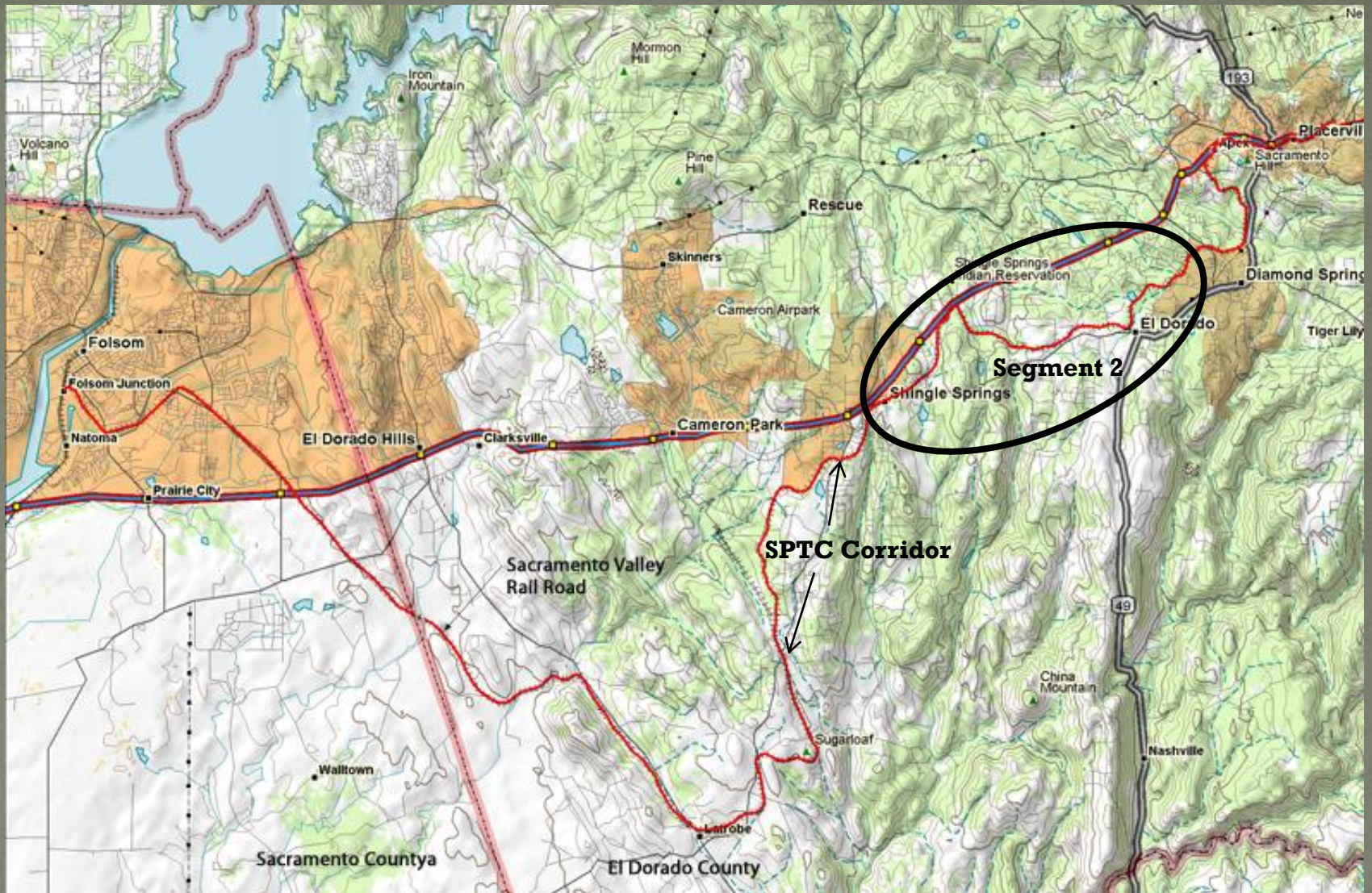
Weekly mandatory safety meeting on the deck of the El Dorado Station, built for the El Dorado Western Railroad by Ed Hagen

# El Dorado County Historical Railroad Park



Located in the town of El Dorado on Oriental St





Map highlighting Segment 2  
West of Missouri Flat Road to Mother Lode Dr. in Shingle Springs





El Dorado Station, 6000 Oriental St.

Operations every Sunday (*weather permitting*):

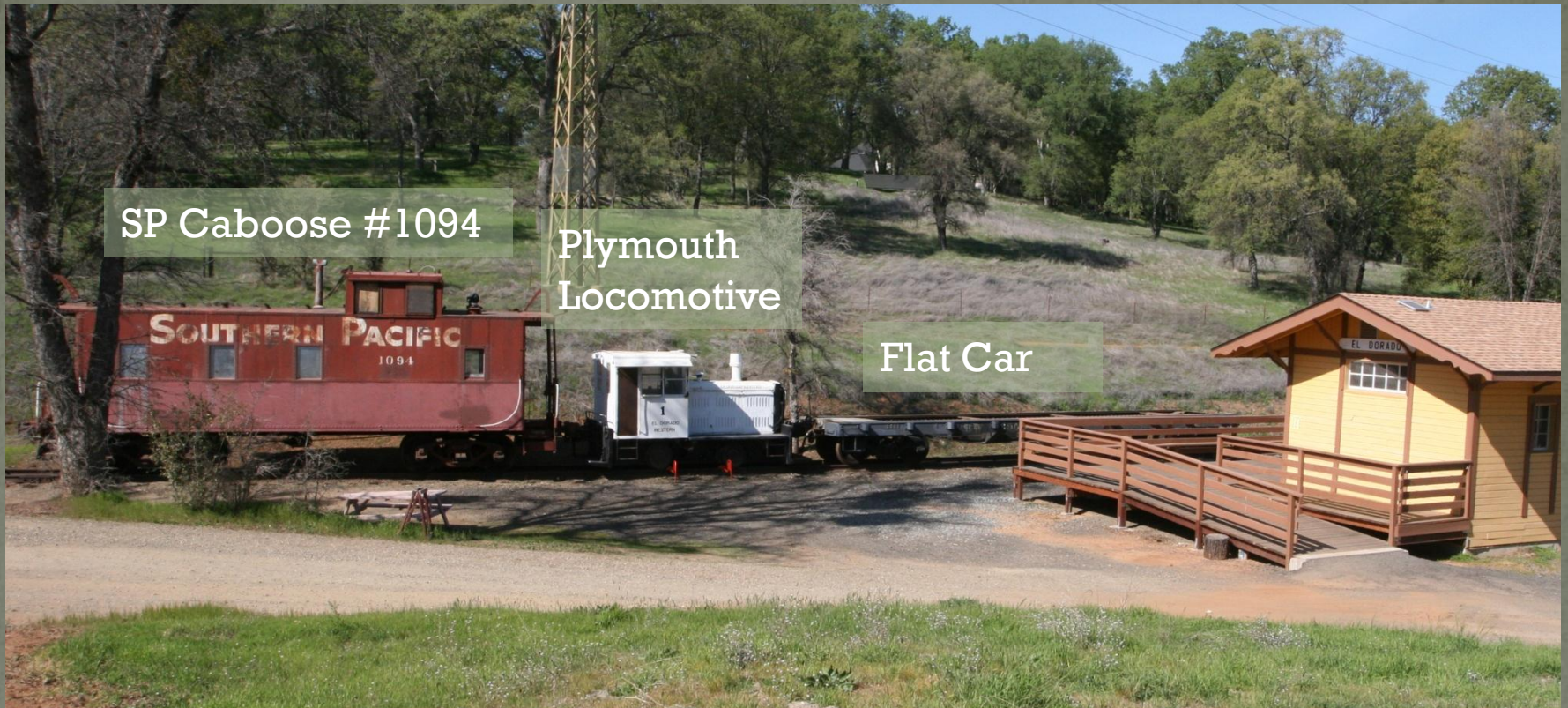
- 1<sup>st</sup> and 3<sup>rd</sup> Sundays in El Dorado
- 2<sup>nd</sup> and 4<sup>th</sup> Sundays in Shingle Springs

Shingle Springs Depot, 4241 Mother Lode Dr.



14-0748 A 4 of 16





- CEDAC Grant to restore the Plymouth Locomotive
- Restore SP Caboose #1094
- Re-deck and outfit the Flat Car for passengers

The screenshot shows a web browser window displaying the Federal Railroad Administration (FRA) website. The page title is "Safety Jurisdiction for Tourist Railroads". The navigation menu includes "About FRA", "Railroad Safety", "Rail Network Development", "Research & Development", "Legislations & Regulations" (highlighted), "Grants & Loans", "Communication & Government Affairs", and "FRA eLibrary". The main content area features a breadcrumb trail: "Home Page // Legislation & Regulations // Regulations & Rulemaking // Safety Jurisdiction for Tourist Railroads". The page is titled "Safety Jurisdiction for Tourist Railroads" and contains a detailed paragraph explaining the authority of FRA under 49 U.S.C. § 20103 and 49 C.F.R. § 1.49. It defines "railroad" and "general railroad system of transportation". A second paragraph states that FRA does not extend its regulations as far as the statute permits. The page is dated "Updated on October 31, 2011". At the bottom, there is a section titled "Tourist Railroads FRA's Exercise-of-Jurisdiction Decision Tree" with a question: "Is the track gage less than 24 inches?".

*The Federal Railroad Administration's mission is to enable the safe, reliable, and efficient movement of people and goods for a strong America, now and in the future.*

14-0748 A 6 of 16



# Regulatory Agencies

- Federal Railroad Administration (FRA)
  - Jurisdiction over the rules for the safe operation of railroads and the quality of the tracks, equipment, and personnel... of the El Dorado Western Railroad
    - Specifications,
- California Public Utilities Commission (CPUC)
  - Jurisdiction where public and private roads cross the tracks, and jurisdiction where the trail crosses the tracks

Additional signage which can provide trail directional information, county regulations, and other information will be added with the help of the Parks Division.



14-0748 A 7 of 16





17 ton Plymouth Locomotive in El Dorado – restoration funded by CEDAC Community Enhancement Grant



Peter Schulze, El Dorado Western Railroad volunteer and professional track inspector



Mandatory Operations Safety Training conducted by Bill Schultz, retired UP Railroad safety instructor

14-0748 A 8 of 16





FRA Certified Track – means rail, ties, ballast, switches and other facets of “track” must meet certain specifications as defined in CFR 213 (Track Safety Standards) and is subject to inspection





Railroad bridge near Davidson Rd

Railroad bridge near Mother Lode Dr. in El Dorado







View from the track west of El Dorado.

Our goal for 2014 is to complete the repairs on 2.2 miles of track from El Dorado to Greenstone Road, and have it inspected and certified as FRA compliant.









- The development of a dynamic living history program with options to offer the public, students and seniors, along with exhibits and visitors services will enhance Tourism in El Dorado County
- The program helps accomplish the County Museum's mission to preserve and interpret El Dorado County's history





14-0748 A 14 of 16







# EL DORADO WESTERN RAILROAD

El Dorado County Historical Museum

Mary Cory, General Manager & Museum Administrator

[mary.cory@edcgov.us](mailto:mary.cory@edcgov.us)



Historical photograph of the 1888 El Dorado Station with the El Dorado School, now the Community Hall, on the left.

14-0748 A 16 of 16