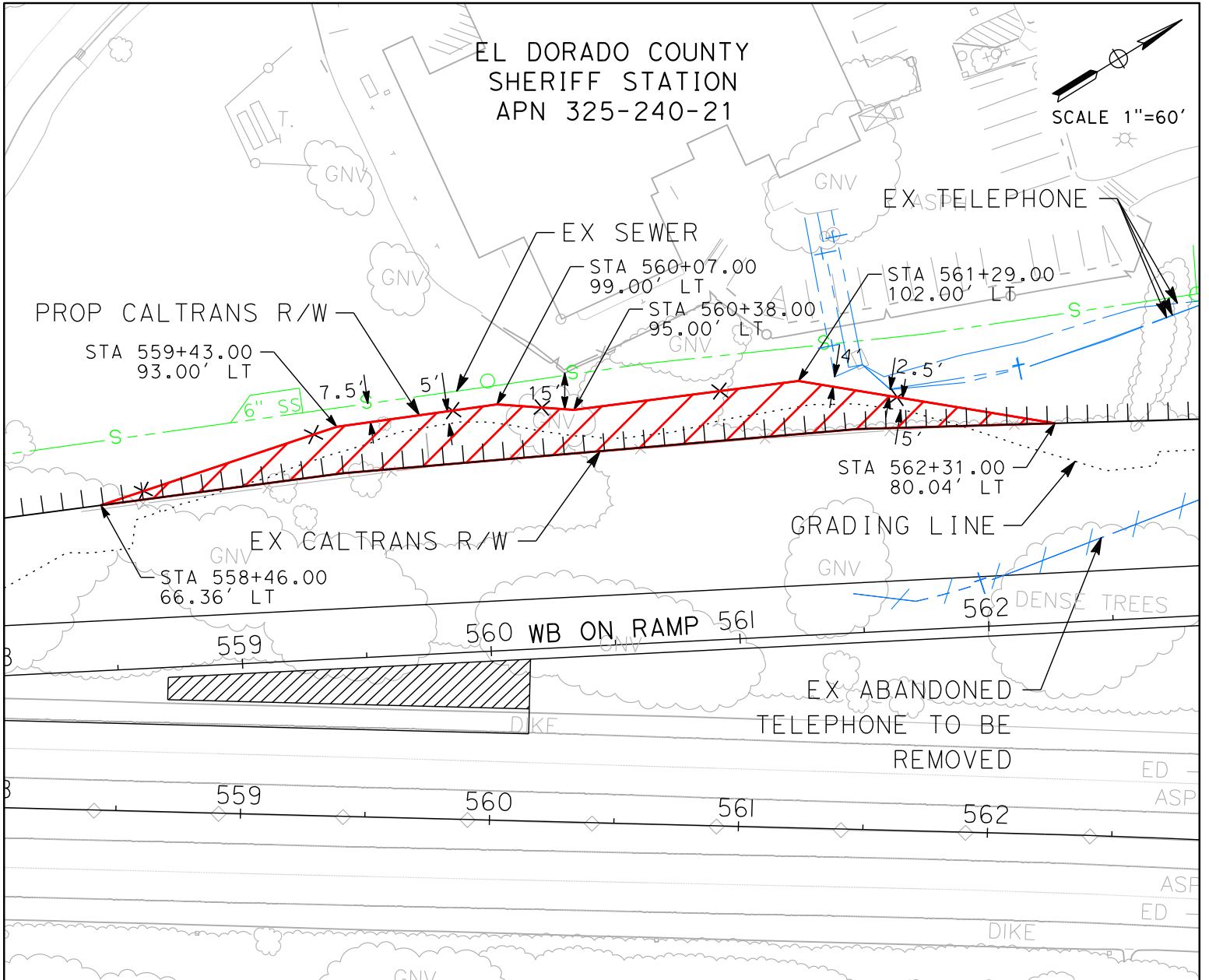
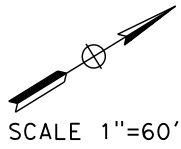


EL DORADO COUNTY
SHERIFF STATION
APN 325-240-21



LEGEND:

- EXISTING FEATURES
- EXISTING R/W
- PROPOSED IMPROVEMENTS
- PROPOSED ACCESS CONTROL FENCE
- TAKE AREA (5,635 SQFT)
(0.129 AC)

NOTES:
(1) MINIMUM OFFSET FROM FENCE TO SEWER LINE SHALL BE 7.5 FEET.



110 BLUE RAVINE ROAD, SUITE 200
FOLSOM, CA 95630 (916) 858-0642

WESTERN PLACERVILLE INTERCHANGES AT U.S. 50
PHASE 1A - WB ON-RAMP GRADING

REQUIRED TAKE AREA