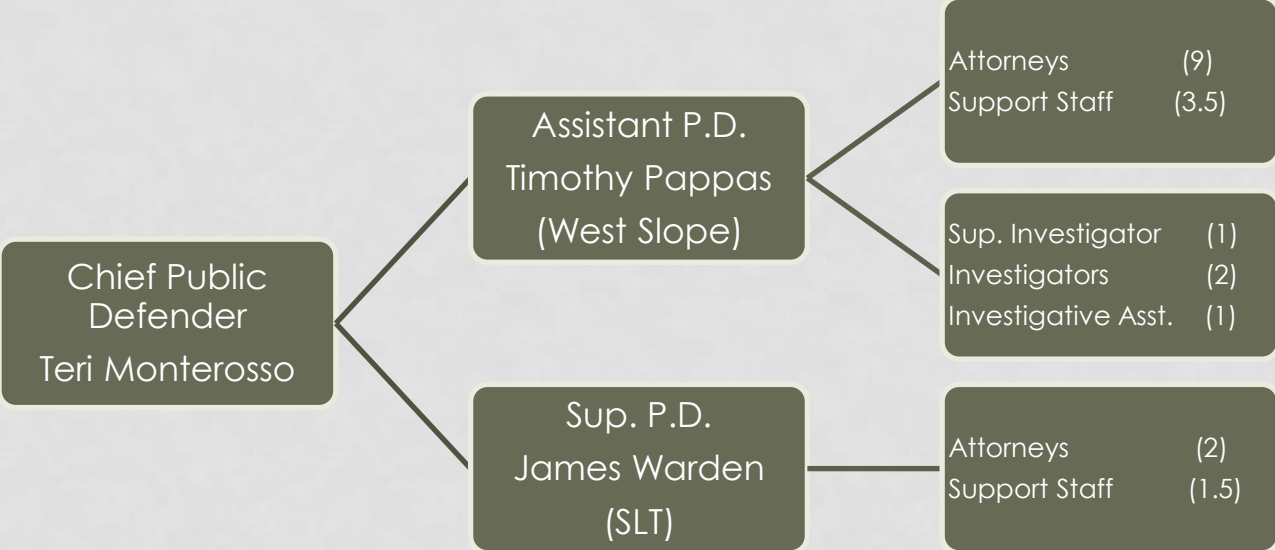


COUNTY OF EL DORADO OFFICE OF THE PUBLIC DEFENDER



DEPARTMENT OVERVIEW FEBRUARY 2019

A team of 14 attorneys with diverse backgrounds that include: judge pro tem, college professor, state-wide juvenile “Lawyer of the Year,” appellate specialist, and Army Reserve, representing 200 years of collective experience

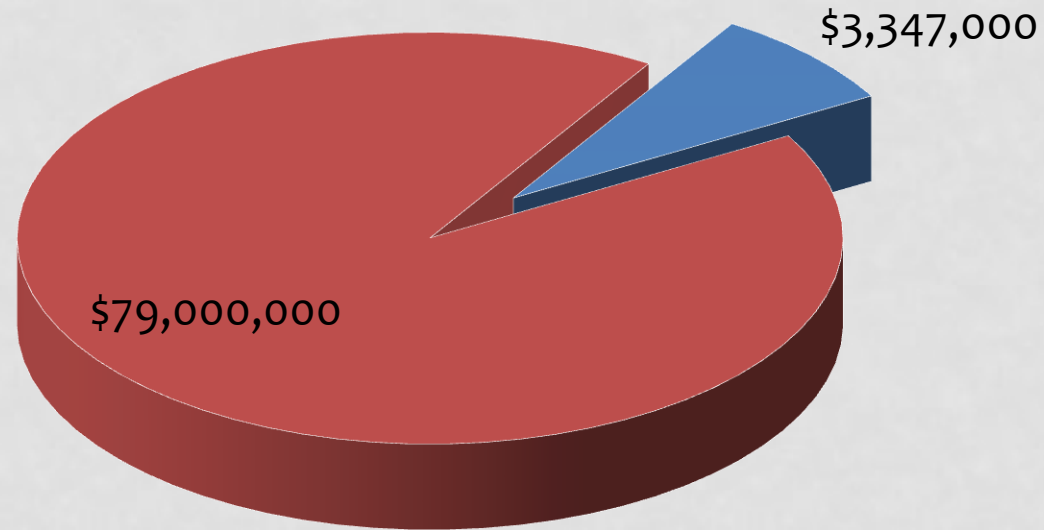


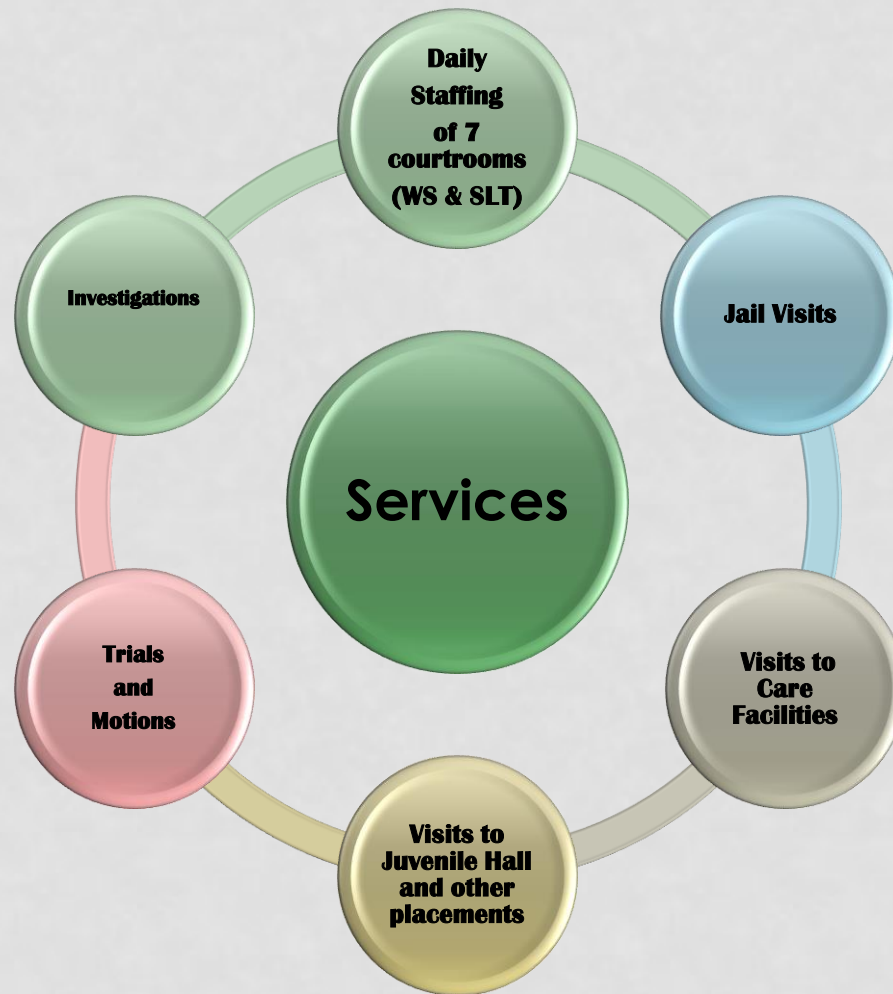
The Public Defender’s office benefits from the knowledge and expertise our attorneys bring to the County team from their experiences at other agencies that include: Imperial County, Los Angeles County, Placer County, Riverside County, Sacramento County, San Diego County, San Joaquin County, Shasta County, and the State of California Department of Justice

SYSTEM OF JUSTICE PARTNER

Fiscal Year 2018/2019

■ Public Defender ■ Law & Justice







ACCOMPLISHMENTS

- **Successful implementation of intern program through partnership with local law schools**
- **Established Performance Standards, in preparation for final phases of Case Management System**
- **Internal staff training programs that utilize in-house expertise developed by our attorneys for Mandatory Continuing Legal Education per State Bar requirements**

GOALS:

- ✓ Implement final phases of Case Management System (ACES)
 - Measurement of Performance Standards
 - Integrate South Lake Tahoe office
- ✓ Pursue implementation of statutory fees and other revenue options
- ✓ Maintaining level of service while responding to new State mandates

PUBLIC SAFETY REALITIES:

- ✓ Continuous changes in the criminal justice system that impact local law and justice programs that are the result of voter action and legislative mandates:
 - ✓ Continued impacts of 2011 Realignment: increased local homeless and/or mentally ill populations and caseloads
 - ✓ Bail reform
 - ✓ Prop 47, Prop 54, Prop 57, Prop 63, Prop 64, SB 1437
 - ✓ More specialty courts to serve vulnerable clients (veterans, mentally ill, and/or substance-addicted offenders, including opioid crisis)
 - ✓ New diversion processes for veterans and for mentally ill