



Diamond Springs Parkway Project

**Presentation to Board of Supervisors
September 12, 2023**

Rafael Martinez

Director

Department of Transportation

Dustin Harrington

Senior Civil Engineer/
Project Manager

David Cacciatore

Director of Environmental Operations
APTIM

Presentation Outline

1. Purpose and Need
2. Alignment Selection
3. IOD Acceptance
4. Environmental Remediation
5. Site Ownership / Liability
6. Questions

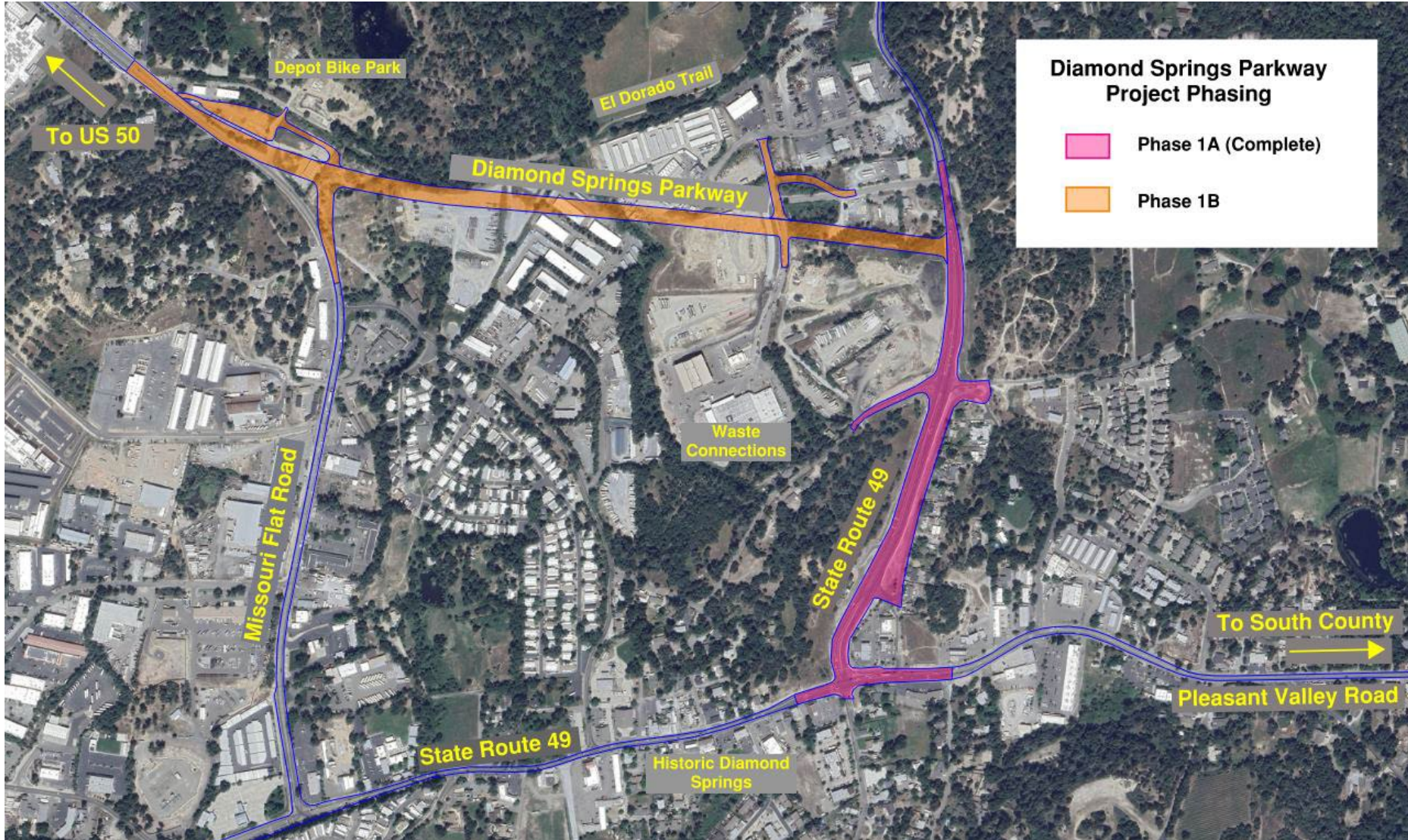
Purpose and Need

- Improve safety and provide parallel connection from Hwy 49 to Hwy 50
- Relieve traffic congestion in the historic Diamond Springs townsite
- Meet operational goal of rerouting high volume of traffic around Pleasant Valley Road in Diamond Springs
- Improve level of service on Pleasant Valley Road and Missouri Flat Road
- Create a new 4-lane arterial from Hwy 49 to Missouri Flat Road
- Multi-modal improvements (sidewalks, bike lanes, bus turnouts)

Project Phasing

- **Phase 1A** – CIP Project No. 72375
Widen and realign Hwy 49 and establish new frontage road (Wagon View Trail)
Completed in 2022
- **Phase 1B** – CIP Project No. 72334
New 4-lane roadway connecting Missouri Flat Rd and Hwy 49 south of Bradley Drive
Anticipated Advertise & Award in 2024

Project Phasing



Project Timeline

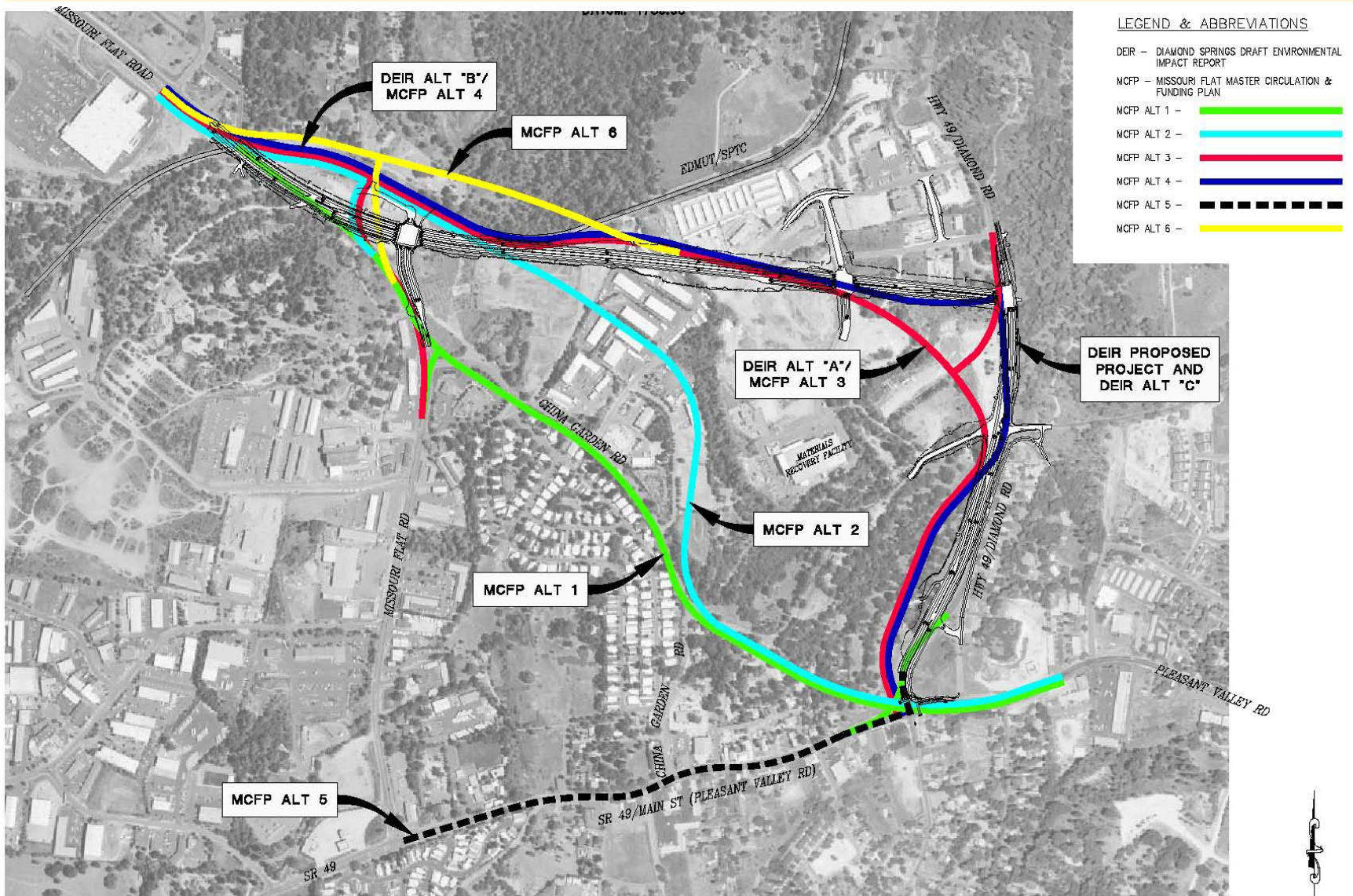
This project has been in the works for over 25 years, including numerous public forums for community input

April 1996	Missouri Flat/Pleasant Valley Rd Connector project included in DOT 20-Year CIP
Fall 1996	Two meetings for public input on potential routes
April 1997	Public meeting held to present potential alignments; community preferred Alternative No. 3 (out of six options)
June 1997	Board approved Alternative No. 3 as preferred route, under condition of Caltrans approval
April 1998	Project included in the MC&FP
2000	Project analyzed in MC&FP EIR

Project Timeline

2004	Project included in County General Plan
2004	Preliminary engineering begins
2005	Public meeting discussed Alt No. 4 - "T" Alignment
2005	Consultant hired to analyze Alternatives 3 and 4
Dec 2007	Notice of Preparation for EIR distributed for 30-day public review (direct mail, County website, Mt Democrat)
Jan 2008	EIR public scoping meeting
Apr 2008	Board approved "T" Alignment as new preferred alignment
Jun 2010	Draft EIR distributed for public review (6/23 – 8/23)
July 2010	EIR public meeting (7/28/10)
May 2011	Public hearing - Final EIR certified and Board approved

Alignments Evaluated



Alignments Evaluated

Hazards and Hazardous Materials (DEIR 4.7)

- Each alternative evaluated for potential to impact project
- Phase I Environmental Site Assessment included 63 parcels
- Hazardous materials search included: lead, asbestos, pesticides, petroleum hydrocarbons, PCBs, radon, and industrial chemicals
- Alternatives A, B, & C all had similar environmental impacts in respect to hazardous materials
- Alternative C identified as the “environmentally superior alternative”

Alignment Selection

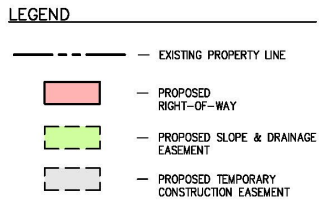
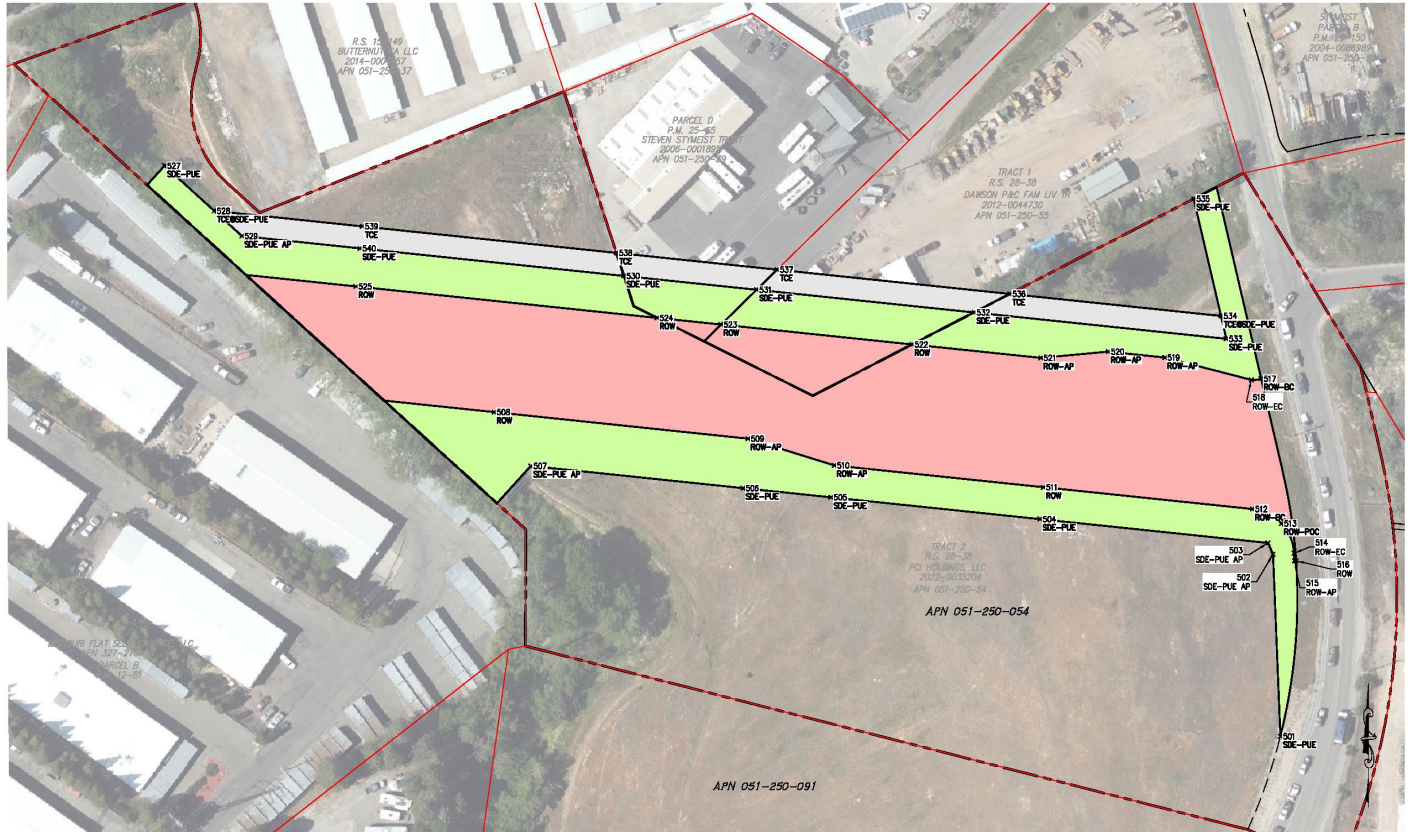
Environmental Topic Area	Proposed Project	No Project Alternative	Alternative A	Alternative B	Alternative C
Aesthetics, Light, and Glare	Less than significant impact	Fewer -1	Greater +1	Greater +1	Similar 0
Air Quality	Less than significant impact with mitigation	Greater +1	Similar 0	Similar 0	Fewer -1
Biological Resources	Less than significant impact with mitigation	Fewer -1	Greater +1	Greater +1	Similar 0
Cultural Resources	Less than significant impact	Fewer -1	Similar 0	Similar 0	Similar 0
Geology, Soils, and Seismicity	Less than significant impact	Fewer -1	Similar 0	Similar 0	Similar 0
Hazards and Hazardous Materials	Less than significant impact with mitigation	Fewer -1	Similar 0	Similar 0	Similar 0
Hydrology and Water Quality	Less than significant impact	Fewer -1	Similar 0	Similar 0	Similar 0
Land Use	Less than significant impact	Greater +1	Greater +1	Greater +1	Similar 0
Noise	Less than significant impact with mitigation	Fewer -1	Similar 0	Similar 0	Similar 0
Public Services	Less than significant impact / Beneficial impact	Greater +1	Similar 0	Similar 0	Similar 0
Traffic and Transportation	Less than significant impact with mitigation / Beneficial impact	Greater +1	Greater +1	Greater +1	Similar 0
Utilities and Service Systems	Less than significant impact / potential Beneficial impact	Greater +1	Similar 0	Similar 0	Similar 0
Score	~	-2	4	4	-1

IOD Acceptance

IOD = Irrevocable Offer of Dedication

- An IOD for the Diamond Springs Parkway rights of way on APN 051-250-054 was prepared in 2009 with a 15-year expiration term
- In 2010, the Board consented to the making of Irrevocable Offer of Dedication for the subject parcel
- County must accept the IOD by December 1, 2024 otherwise be vacated
- IOD issuance and acceptance is in accordance with California Government Code § 7050
- Acceptance of the IOD involves no compensation

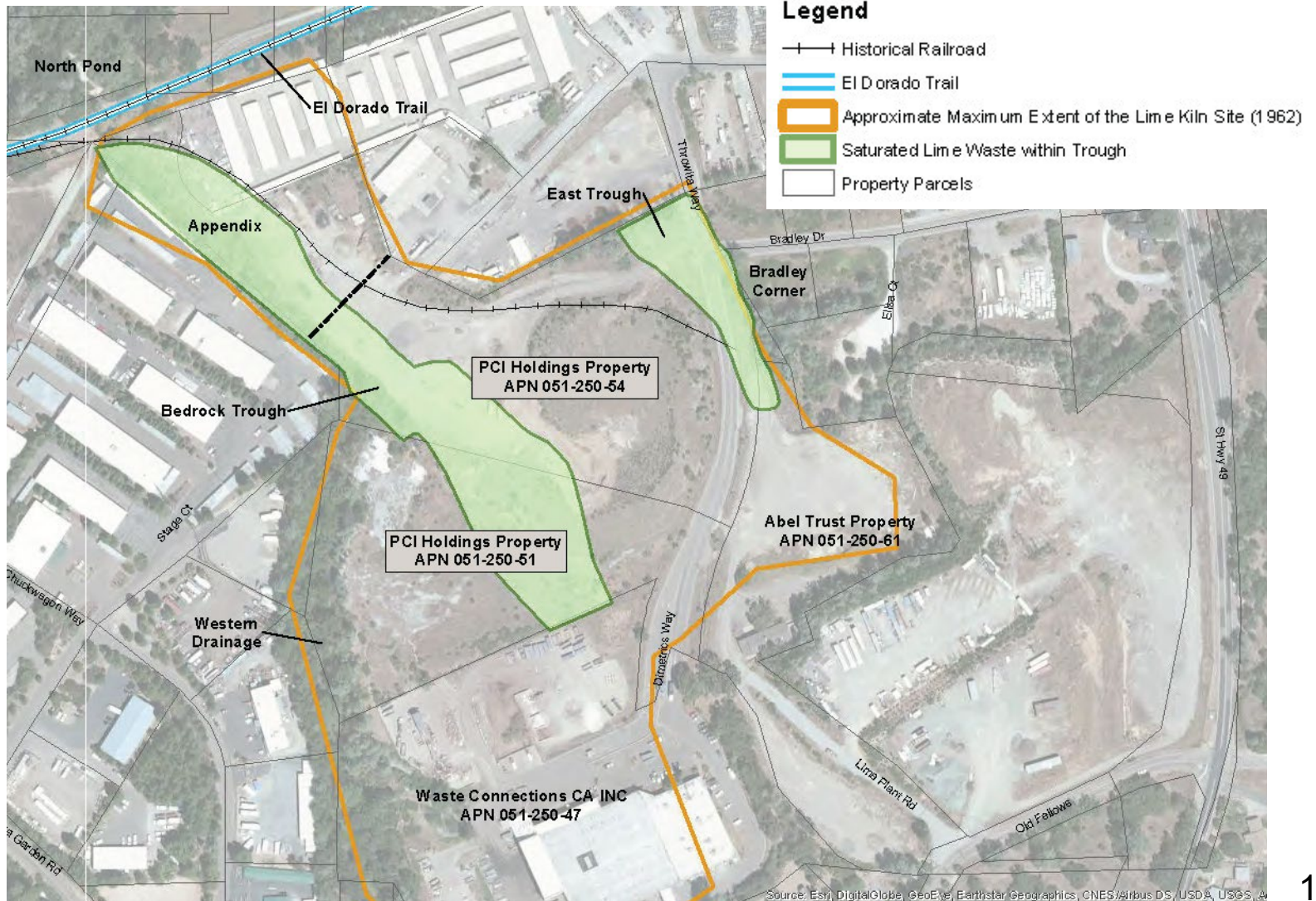
IOD Acceptance



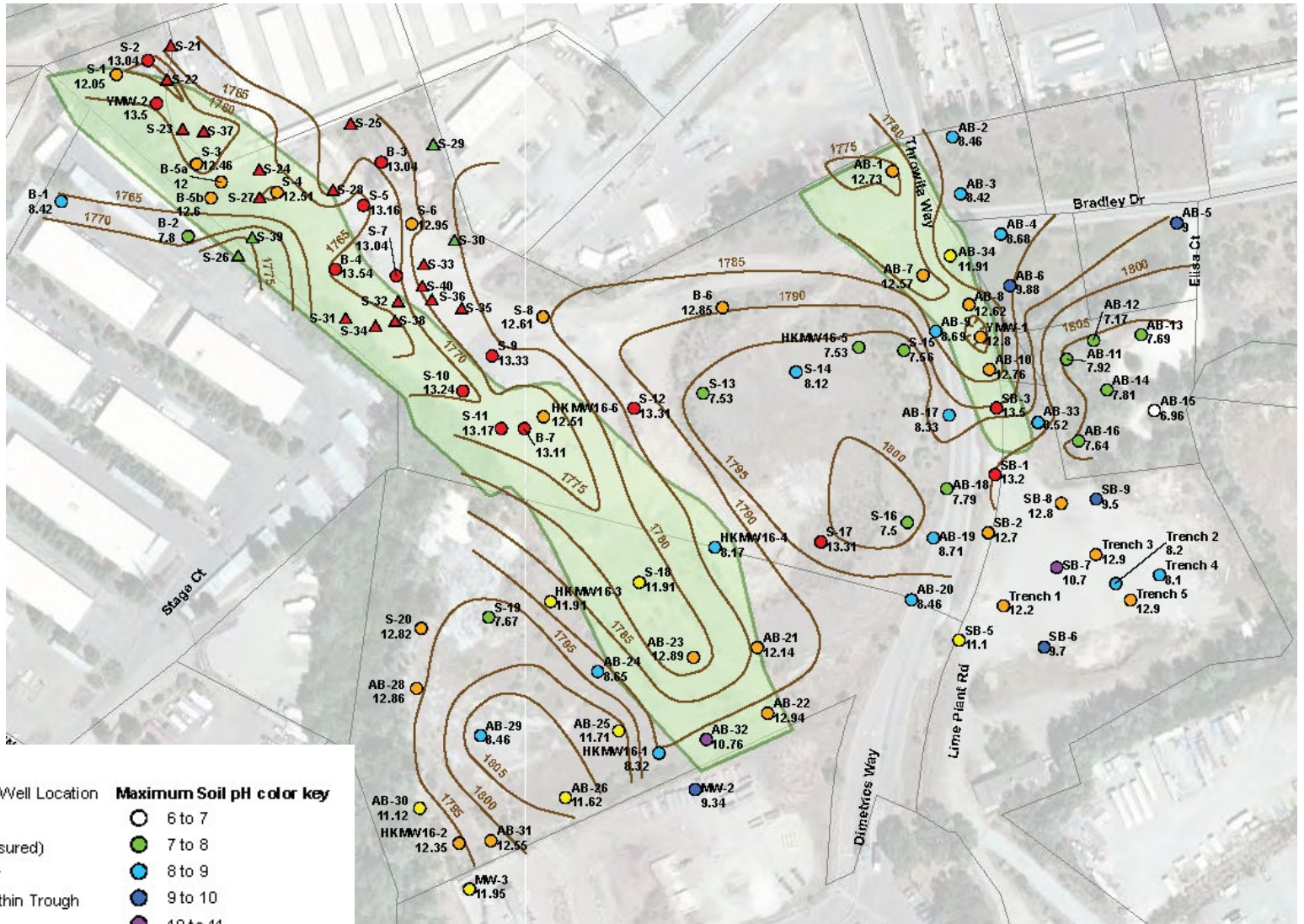
Environmental Remediation

- Diamond Springs Lime Company operated on site from approximately 1927 to 1977
- Limestone was imported from nearby sources and crushed/heated to form calcium hydroxide and calcium carbonate
- Central Valley Regional Water Quality Control Board has regulatory oversight
- Transportation prepared a Phase II Environmental Site Assessment in 2017
- Transportation prepared a Site Investigation Report in 2020
- Transportation prepared a Draft Remedial Action Plan in 2023
 - Public Circulation: March 14 - April 18, 2023
 - No comments received
- Water Board issued concurrence letter for RAP in July 2023

Environmental Remediation



Environmental Remediation



Environmental Remediation



- LEGEND:
- APPROXIMATE LIMITS OF SATURATED LIME WASTE AREAS
 - LIMITS OF LIME WASTE REMOVAL BY COUNTY
 - DRAINAGE IMPROVEMENTS BY COUNTY
 - DRAINAGE IMPROVEMENTS BY OTHERS
 - COUNTY RIGHT-OF-WAY
 - PROPERTY LINES
 - APPROXIMATE LIMITS OF DIAMOND LIME PLANT SITE (1962)
 - BEDROCK SURFACE CONTOUR

Adjacent Remediation Work

Waste Connections (Materials Recovery Facility)

- Estimated: 48,000± cubic yards export
53,000± cubic yards import
- Actual: 24,380 cubic yards export
25,209 cubic yards import

Source: Final Remedial Action Completion Report, Youngdahl Consulting Group, March 2020

Diamond Springs Parkway

- Estimated: 9,800± cubic yards export
10,000± cubic yards import

Questions
