



Tiger Lily Project

1 message

Brandi Peerman <brandi@baileymac.com>

Tue, Jan 9, 2018 at 4:32 PM

To: planning@edcgov.us, Evan Mattes <evan.mattes@edcgov.us>, jvegna@edcgov.us, James Williams <james.williams@edcgov.us>, gary.miller@edcgov.us, jeff.hansen@edcgov.us, brian.shinault@edcgov.us

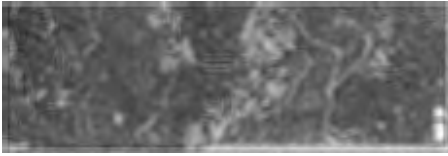
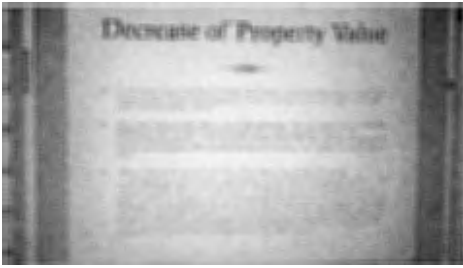
Dear Commissioners,

Please find attached ariel map images with google distance locators at the bottom of images reflecting the actual distance from homes neighboring the proposed tower site. Also attached are letters from 3 real estate brokers and a coverage map from AT&Ts website showing no gaps in coverage. Please keep in mind that in addition to no gaps in AT&Ts coverage there are other carriers that provide high speed internet to our area like Rocky Ridge that offer much better service and pricing than AT&T making this tower not only intrusive but completely unnecessary. 5411 Victory Mine Rd, the proposed tower location borders 6 residential properties and is within a few hundred feet of at least 20 residential homes, not less than 4 as the application package would have you believe. This tower will be highly visible from not only our home, but our neighbors homes, and hundreds of homes for several miles away. As a top producing real estate broker for 17 years I know for a fact that the property values of these homes will be drastically affected by this tower. Please deny this tower!

Thanks,
Brandi Peerman
Bailey Mac Realty Group

9 attachments

21246598_886597011497807_6670534256261065086_o.jpeg
265K



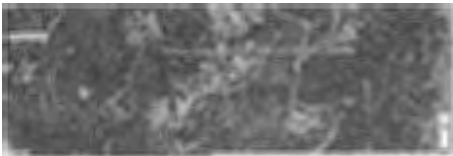
Habitat A.png
3446K



Habitat A signs.jpeg
764K



Screen Shot 2018-01-05 at 3.50.48 PM.png
3536K



Screen Shot 2018-01-05 at 3.51.30 PM.png
3423K



Tower from Peerman residence copy.jpeg
470K

Case 1:17-cv-00146-UNA Document 1-1 Filed 01/10/18 Page 1 of 1



Cell Tower Exhibit 1.png
947K

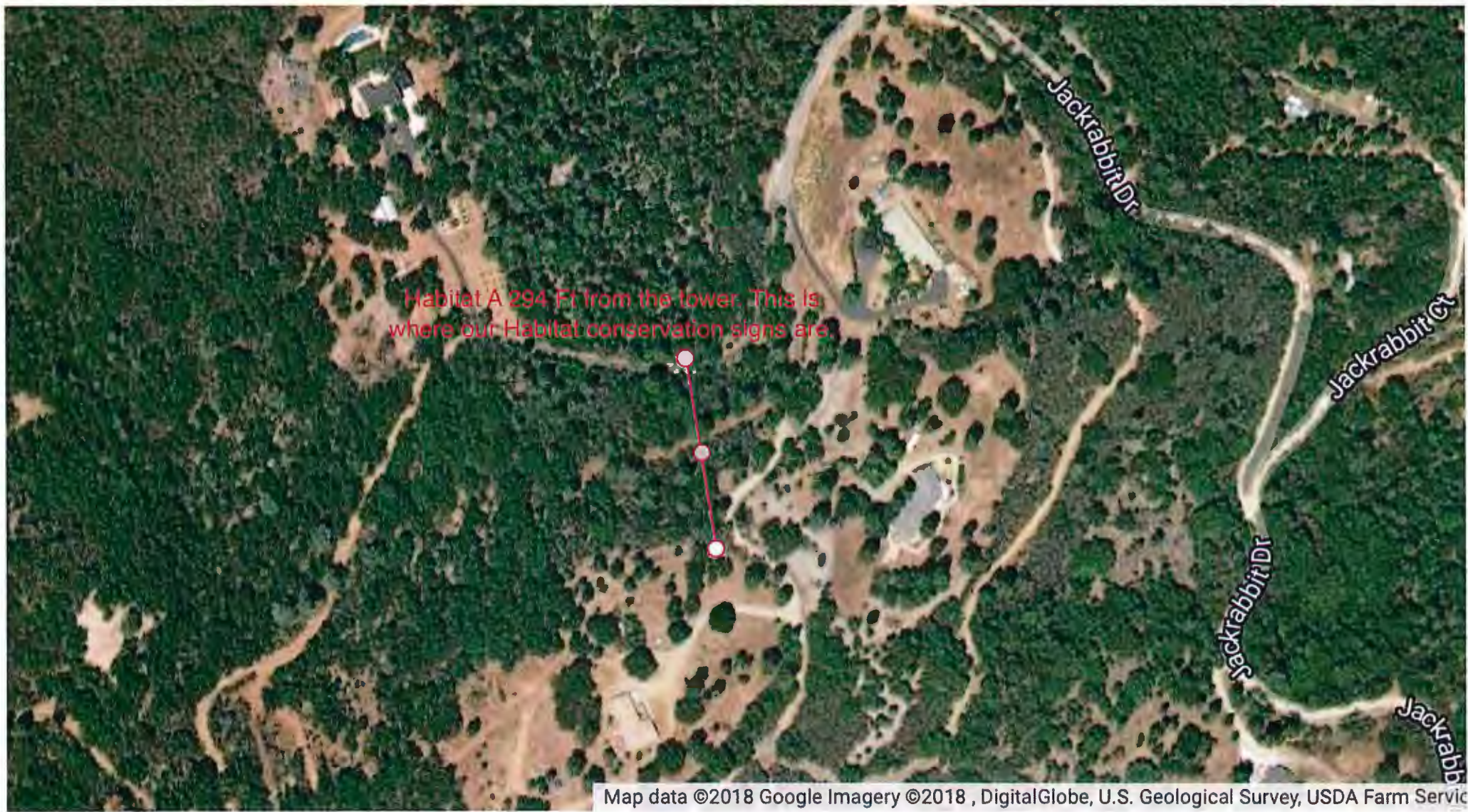


 **AT&T coverage 1.pdf**
218K

Decrease of Property Value



- ☞ Local broker Sara Allen from Village Real Estate wrote the following, "As a Real Estate Broker, I have concern about how the close proximity of a cell tower will affect future property values."
- ☞ Top Lyon Broker Cathy Harry wrote the following, "It's not rocket science that the addition of this ill conceived cell tower will, in fact, drop the value of the surrounding properties. If we showed a home where this was present or nearby, it would most certainly affect a potential buyer's decision on whether to purchase or not."
- ☞ Broker Brandi Peerman from Bailey Mac Realty wrote the following, "I am asking that you deny the application for the Huot Rd monopole project. This site is extremely close to several homes. The project would drastically devalue several homes in the area. I have been a top producing real estate broker for 17 years and it is my professional opinion that this project site would impact the local real estate values and economy of the community. Several studies show real estate values are affected by 20-40% for homes located near a cell tower and that 95% of home buyers would not purchase a home located near a cell tower. Please use an alternate site that will not harm families in our community."



Ad closed by Google

Stop seeing this ad

Why this ad? ▶

1ce

294.247

Feet



Habitat A 282 ft
from tower

NO
TRESPASSING

Conservation Area



!Please Keep Out!

Critically Endangered
Livestock Habitat

Organic Farm
Be Aware

Our home 753 from the tower with tower clearly visible from front of home and backyard



Map data ©2018 Google Imagery ©2018 , DigitalGlobe, U.S. Geological Survey, USDA Farm Ser

Ad closed by Google

Stop seeing this ad

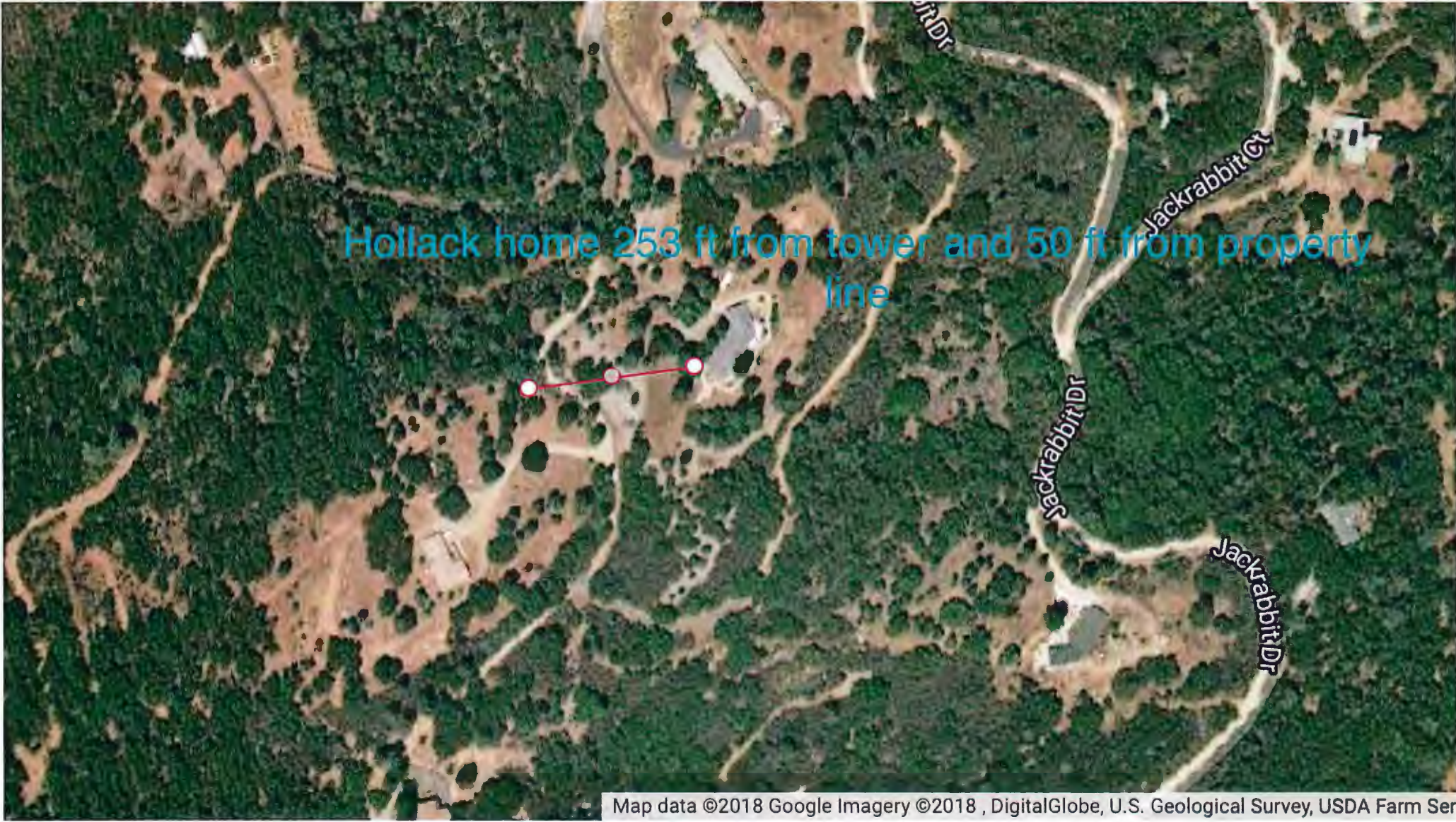
Why this ad? ▾

nce

753.840

Feet





Map data ©2018 Google Imagery ©2018 , DigitalGlobe, U.S. Geological Survey, USDA Farm Ser

Ad closed by Google

Stop seeing this ad

Why this ad? ▸

nce

253.122

Feet

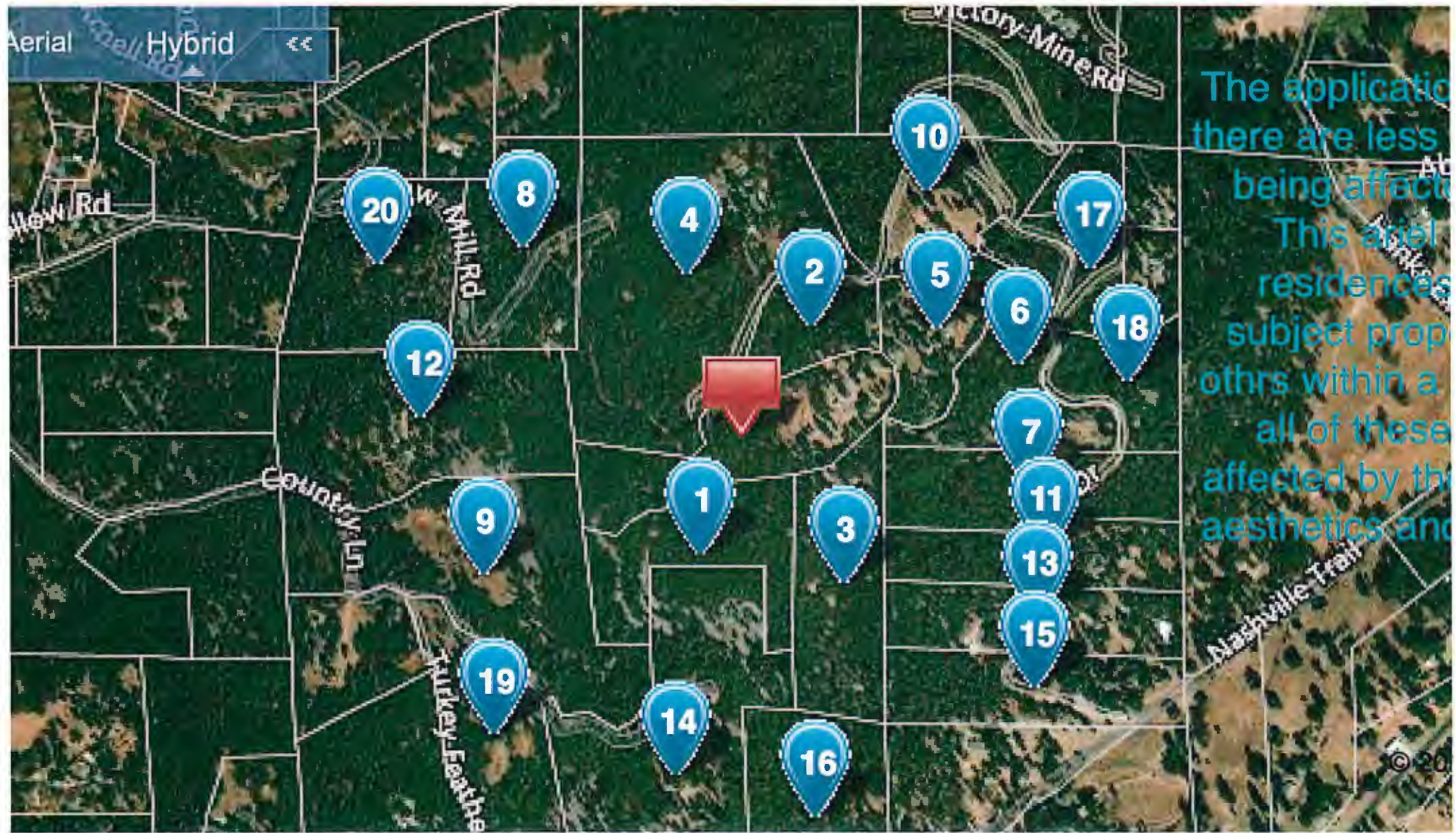




This will be the view from our front yard. The tower will be around 80 ft above the treeline.

Nashville, CA 95667-8596, El Dorado County

- Market Trends
- Neighbors**
- Neighborhood Profile
- Assessor Map
- Flood Map



Map of 5411 victory mine rd

[< Back to search results](#)

Coverage by Device Type: AT&T HD Voice

Domestic Wireless Voice Coverage

This map shows an approximation of wireless voice coverage in the United States, Puerto Rico, and the U.S. Virgin Islands.



Legend

Your search

AT&T HD Voice

Voice

3rd Party Coverage

Important Information About This Coverage Map

These maps provide a predicted high-level approximation of wireless coverage. There are gaps in coverage that are not shown by this high-level approximation. Actual coverage may differ from map graphics and may be affected by terrain, weather, network changes, foliage, buildings, construction, signal strength, high-usage periods, customer equipment, and

other factors. AT&T does not guarantee coverage. Our coverage maps are not intended to show actual customer performance on the network or future network needs or build requirements inside or outside of existing AT&T coverage areas. Coverage maps may include areas served by unaffiliated carriers. Arrangements with these carriers may change from time to time, and coverage is subject to change without notice. Charges will be based on the location of the site receiving and transmitting the call, not the subscriber's location. Your phone's display does not indicate the rate you will be charged.

These maps are subject to the Microsoft® Service Agreement and for informational purposes only. No guarantee is made regarding their completeness or accuracy. Construction projects, traffic, or other events may cause actual conditions to differ from these results. Map and traffic data 2013 NAVTEQ®

Microsoft Bing Maps Terms of Use

Terms of Use URL:
<http://www.microsoft.com/maps/assets/docs/terms.aspx#11>

Coverage Legend Definitions

Voice Coverage: Depicted in medium and dark orange. Shading represents coverage areas that should be sufficient for on-street, in-the-open and some in-building coverage. Dark orange areas depict AT&T High-Definition (HD) Voice Coverage. HD Voice provides superior audio clarity and enhanced background noise reduction. AT&T HD Voice requires both parties on the call to be located within AT&T HD Voice coverage with a compatible device and properly provisioned account. HD Voice also may be available for calls to or from non-AT&T customers when HD Voice services of the other carrier and AT&T are interoperable. [Learn more. \(http://att.com/HDVoice\)](http://att.com/HDVoice)

3rd Party Coverage: These areas, shown in light orange with a striped pattern, represent 3rd party coverage where available. The 3rd party speeds, quality of coverage, and services are not guaranteed. Excessive use of 3rd party service may result in the loss of coverage in such areas as stated in your plan terms. Compatible device required.



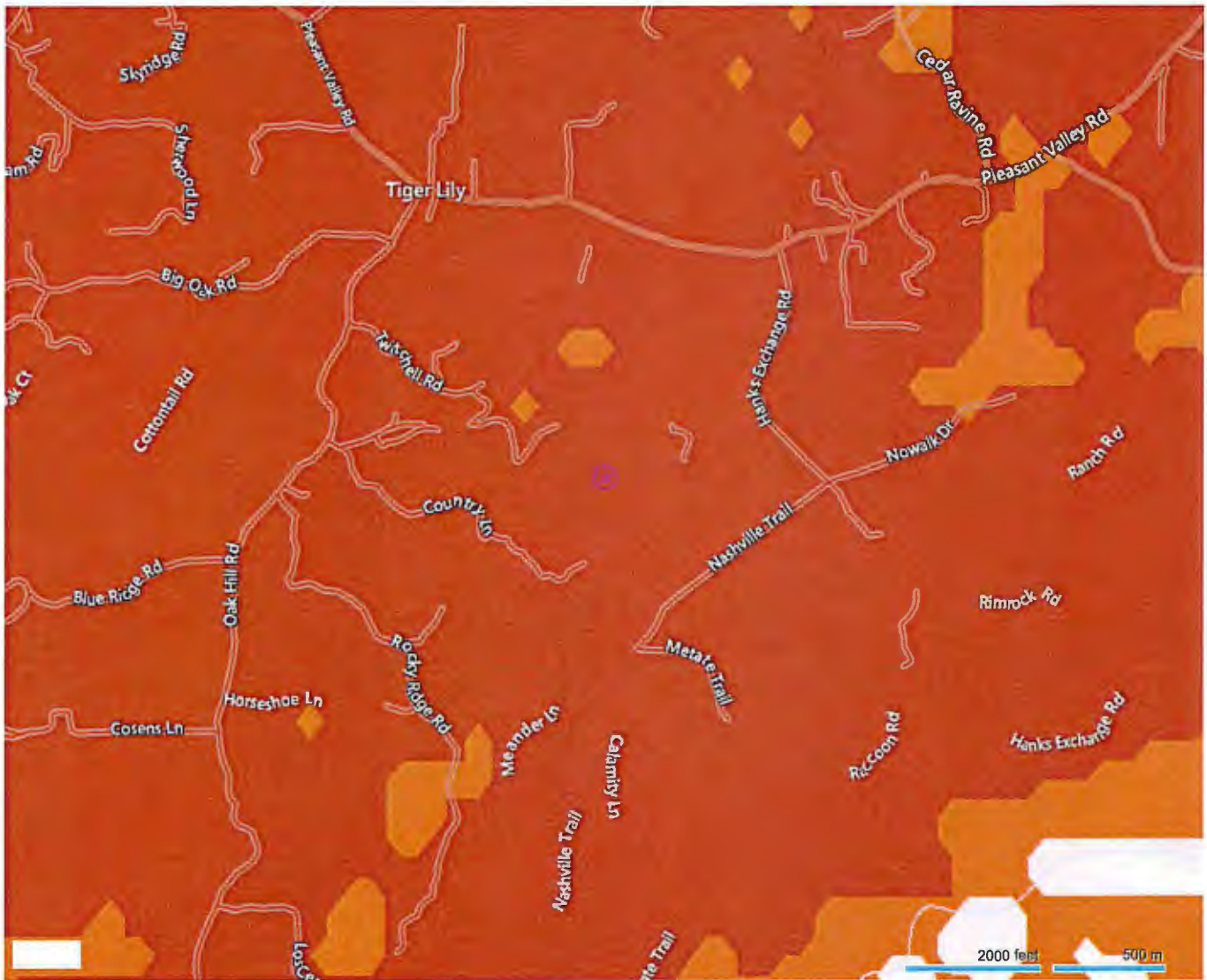
Map of 5411 victory mine rd

[< Back to search results](#)

Coverage by Device Type: 4G LTE*

Domestic Wireless Data Coverage

This map shows an approximation of wireless data coverage in the United States, Puerto Rico, and the U.S. Virgin Islands.



Legend Your search 4G LTE* 4G* 3G* 3rd Party Coverage

Important Information About This Coverage Map

These maps provide a predicted high-level approximation of wireless coverage. There are gaps in coverage that are not shown by this high-level approximation. Actual coverage may differ from map graphics and may be affected by terrain, weather, network changes, foliage, buildings, construction, signal strength, high-usage periods, customer equipment, and

other factors. AT&T does not guarantee coverage. Our coverage maps are not intended to show actual customer performance on the network or future network needs or build requirements inside or outside of existing AT&T coverage areas. Coverage maps may include areas served by unaffiliated carriers. Arrangements with these carriers may change from time to time, and coverage is subject to change without notice. Charges will be based on the location of the site receiving and transmitting the call, not the subscriber's location. Your phone's display does not indicate the rate you will be charged.

These maps are subject to the Microsoft® Service Agreement and for informational purposes only. No guarantee is made regarding their completeness or accuracy. Construction projects, traffic, or other events may cause actual conditions to differ from these results. Map and traffic data 2013 NAVTEQ®

Microsoft Bing Maps Terms of Use

Terms of Use URL:
<http://www.microsoft.com/maps/assets/docs/terms.aspx#1>

Coverage Legend Definitions

4G LTE* (Long Term Evolution): Areas shown in dark orange represent AT&T's fastest mobile Internet speeds. You'll know you're in our LTE coverage area when the 4G LTE network indicator displays next to the signal bars on your device. Compatible device required. Certain 4G LTE devices are not compatible in select LTE network coverage areas. [Learn more.](#)

4G* (Mobile Broadband): The areas shown in medium orange represent AT&T's 4G High Speed Packet Access (HSPA+) network with enhanced backhaul. Compatible device required.

3G* (3G Voice and 3G Mobile Broadband Data): This coverage, shown in light orange, is available in most metropolitan areas. Like all coverage, it can and will be adversely affected by distance from cell site, weather, foliage, tower congestion, and other factors. You'll know you're in our 3G coverage area when the 3G network indicator displays next to the signal bars on your phone. Compatible device required.

3rd Party Coverage: These areas, shown in light orange with a striped pattern, represent 3rd party coverage where available. The 3rd party speeds, quality of coverage, and services are not guaranteed. Excessive use of 3rd party service may result in the loss of coverage in such areas as stated in your plan terms. Compatible device required.

* Supports AT&T DataConnect Pass: DataConnect Pass coverage is available throughout the AT&T company owned 4G and 3G networks. It can only be used on the AT&T wireless network and cannot be used on another carrier's network, either domestic or international. Requires laptop or netbook with aircard/connect card capable of working on the AT&T wireless network; Internet access to sign up; and a new SIM card. AT&T DataConnect Pass supports data usage only, and does not support SMS, MMS, or voice calls. Actual speed and coverage may vary. Time begins expiring immediately upon purchase, whether or not you are using the service. Once your time expires or the allotted megabytes are used, whichever occurs first, your data access will cease. AT&T may send alerts via SMS or email to notify you of usage and/or time remaining. These are courtesy alerts. There is no guarantee you will receive such alerts.