



Public Comment # 40
County of El Dorado Clerk of the Board <edc.cob@edcgov.us>
BOB RCOD 11-15-21

Redistricting

Joanne Thornton <joannethornton5@gmail.com>
To: County of El Dorado Clerk of the Board <edc.cob@edcgov.us>

Fri, Nov 12, 2021 at 5:22 PM

To all Board members, please keep the district 4 to include Shingle Springs and North to include Cool and surrounding communities, and therefore keeping Supervisor Lori Parlin as our representative. I believe she has a true interest in our area, as she has demonstrated extremely well. Thank you.



County of El Dorado Clerk of the Board <edc.cob@edcgov.us>

EDC Redistricting Maps

Rebeca Price <becaroma@gmail.com>
To: edc.cob@edcgov.us

Fri, Nov 12, 2021 at 5:34 PM

I would like to comment about the redistricting maps. Please do not select the maps that eliminate Shingle Springs and our Supervisor Lori Parlin. Please select City Based Alternative Revised #2-A or City Based Alternative Revised #2-B.

This is critical. Do not eliminate our representation!

Rebeca Price



County of El Dorado Clerk of the Board <edc.cob@edcgov.us>

Public Comment Item 40 - Redistricting

Nicole Gotberg <ngotberg@yahoo.com>

Fri, Nov 12, 2021 at 11:03 PM

To: edc.cob@edcgov.us

Cc: The BOSONE <bosone@edcgov.us>, bostwo@edcgov.us, BOS Three <bosthree@edcgov.us>, bosfour@edcgov.us, bosfive@edcgov.us

As a resident of Placerville I am in support of City Redistricting Revised #2A and the EDH Community Revised B alternatives. I think either of these two options would be appropriate. The boundary for District 3, which includes Placerville is nearly identical in these two alternatives and makes sense for the related city/agro-tourism and Highway 49 and 50 intersection interests of this region. I am opposed to City Redistricting Revised #2B and the EDH Community Revised A alternatives because I think Mosquito should be grouped with the Divide in District 4, not with Placerville in District 3. Additionally, the EDH Community Revised A alternative appears to go against the state rules on keeping communities of interest together, so I think that alternative should be discarded.

Thank You
Nicole Gotberg
Placerville Resident



County of El Dorado Clerk of the Board <edc.cob@edcgov.us>

Redistricting

Lynelle Robertson <purplehorsebarn@yahoo.com>
Reply-To: Lynelle Robertson <purplehorsebarn@yahoo.com>
To: "edc.cob@edcgov.us" <edc.cob@edcgov.us>

Sat, Nov 13, 2021 at 10:56 AM

Do not change do not want to loose Lori Parlin as our supervisor Haven't you made enough poor decisions

Sent from Yahoo Mail on Android



County of El Dorado Clerk of the Board <edc.cob@edcgov.us>

Redistricting Maps

Connell Persico <cpch70@gmail.com>

Sun, Nov 14, 2021 at 8:55 AM

To: edc.cob@edcgov.us

Dear Supervisors,

Mosquito is one of the communities most affected by the redistricting decision you are about to make. I am writing to ask that you allow Mosquito to remain a part of District 4. Through my work on the Mosquito Fire Protection District Board of Directors, I have become involved in the strengthening of ties and mutually beneficial activities among Mosquito, Georgetown and Garden Valley. We share a firefighter academy, strong mutual aid relations and excellent communications and cooperation among the Chiefs.

We understand the county desire for countywide fire district consolidation but believe it is not an achievable goal. But we do believe groups of districts with strong ties working together like these three could present an alternative worthy of consideration. So the natural fit is to leave Mosquito in District 4.

And then there is the new bridge which suggests there could be stronger ties between Mosquito and Placerville. That's possible and desirable. The bridge is scheduled for completion in mid 2025. If it's completion does lead to connections between town and country that are stronger than the current Divide connections, the appropriate time to consider redistricting to reflect that would be the 2031 redistricting process. Thanks for the opportunity to express my beliefs on this matter

Connell Persico
6818 Log Cabin Ln.
Placerville, CA 95667
(530) 215-4050



County of El Dorado Clerk of the Board <edc.cob@edcgov.us>

11/16/21 BOS Meeting Agenda Item 40 - Hearing for Redistricting

Susan Kimball <skbaler74@gmail.com>

Sun, Nov 14, 2021 at 3:41 PM

To: edc.cob@edcgov.us

Dear Supervisors;

I've looked at all of the draft maps on your website, and prefer the Pollock Pines Alternative. Unfortunately, I'm assuming that this map is "off the table" as it was not included in Supervisor Parlin's newsletter that I received on Friday afternoon. Of the four draft maps that were included in her e-mail, I believe the least egregious is City Revised Map 2A, as it keeps most of Cameron Park intact.

It would be preferable to keep Cameron Park, Shingle Springs, and Rescue together, (as I believe that those 3 communities share many of the same activities, concerns, and interests. I don't know if that is an actual option, (population-wise) so perhaps we can at least try to keep Cameron Park from being "carved up " like it has been in the past, (and present).

I urge you to please adopt City Revised Map 2A, unless an even better alternative can be found in the short time that is left in this process.

Thank you.
Sue Kimball
Cameron Park



County of El Dorado Clerk of the Board <edc.cob@edcgov.us>

El Dorado Hills Community Revised B Map.

wbrunet <wbrunet@comcast.net>

Sun, Nov 14, 2021 at 3:49 PM

To: County of El Dorado Clerk of the Board <edc.cob@edcgov.us>

Cc: The BOSONE <bosone@edcgov.us>, bostwo@edcgov.us, bosthree@edcgov.us, BOS Four <bosfour@edcgov.us>, bosfive@edcgov.us

Honorable Supervisors,

As residents of the Bass Lake Area in El Dorado Hills, we deeply appreciate your concern and instructions to County staff to keep our Bass Lake Community of Interest intact in a single supervisorial district.

In reviewing the draft alternative maps as proposed, we believe that the best option for representing the interests of our Bass Lake Community, El Dorado Hills, our El Dorado Hills Neighbors' Community of Interest south of US50, and our suburban neighbors in Cameron Park, is to support the **El Dorado Hills Community Revised B Map**.

This map keeps our communities aligned, supports suburban communities of interest where no local city representation exists, keeps the Bass Lake Community intact, keeps Cameron Park in a single district, keeps our Serrano neighbors' community of interest intact, and keeps most specific plans intact in District 1 and District 2.

Out of the four Draft Alternative Maps, we urge you to support **El Dorado Hills Community Revised B Alternative Map**. It represents the best available compromise that respects communities of interest in the largest population centers of El Dorado Hills and Cameron Park in El Dorado County. The El Dorado Hills Community Revised B Alternative B Draft Map meets each of the mapping factor priorities, and aligns with the desires of our various Communities of Interest:

1. **Geographic contiguity.**
2. **Geographic integrity of neighborhoods and local communities of interest.**
3. **Geographic integrity of cities or census-designated places.**
4. **Natural and artificial barriers, including streets and boundaries of the county when practicable.**
5. **Boundaries should be easily identifiable and understandable by residents, and bounded by natural and artificial barriers.**
6. **Geographical compactness.**

Thank you for supporting our communities.

WifredoW Brunet
7137 Cinnamon Teal Way
El Dorado Hills, CA 95762
530-672-0371



County of El Dorado Clerk of the Board <edc.cob@edcgov.us>

November 16, 2021 Agenda Item 40 - Public Workshop on the 2021 Redistricting Process (Redistricting Public Hearing #5)

Tasha Boutselis Camacho <tashieb2002@yahoo.com>

Sun, Nov 14, 2021 at 8:50 PM

To: BOS Clerk <edc.cob@edcgov.us>, BOS one <bosone@edcgov.us>, BOS two <bostwo@edcgov.us>, BOS three <bosthree@edcgov.us>, BOS four <bosfour@edcgov.us>, BOS five <bosfive@edcgov.us>

Dear Supervisors,

As a resident of the Bass Lake Area in El Dorado Hills, I am following up in regards to how important I feel it is to keep our Bass Lake Community intact in a single supervisorial district.

In reviewing the draft alternative maps as proposed, I support the **El Dorado Hills Community Revised B Map**.

This map keeps our communities aligned, supports suburban communities of interest where no local city representation exists, keeps the Bass Lake Community intact, keeps Cameron Park in a single district, keeps our Serrano neighbors' community of interest intact, and keeps most specific plans intact in District 1 and District 2.

I feel this revised B map meets each of the mapping factor priorities previously outlined.

Thank you for your time and consideration.

Tasha Boutselis Camacho
Resident Woodridge Community
2076 Summer Drive



County of El Dorado Clerk of the Board <edc.cob@edcgov.us>

November 16, 2021 Agenda Item 40 - Public Workshop on the 2021 Redistricting Process (Redistricting Public Hearing #5)

Lori Figgins <dlfiggins@yahoo.com>

Sun, Nov 14, 2021 at 9:23 PM

To: County of El Dorado Clerk of the Board <edc.cob@edcgov.us>, The BOSONE <bosone@edcgov.us>, bostwo@edcgov.us, bosthree@edcgov.us, BOS Four <bosfour@edcgov.us>, bosfive@edcgov.us

Honorable Supervisors,

As residents of the Bass Lake Area in El Dorado Hills, we deeply appreciate your concern and instructions to County staff to keep our Bass Lake Community of Interest intact in a single supervisorial district.

In reviewing the draft alternative maps as proposed, we believe that the best option for representing the interests of our Bass Lake Community, El Dorado Hills, our El Dorado Hills Neighbors' Community of Interest south of US50, and our suburban neighbors in Cameron Park, is to support the **El Dorado Hills Community Revised B Map**.

This map keeps our communities aligned, supports suburban communities of interest where no local city representation exists, keeps the Bass Lake Community intact, keeps Cameron Park in a single district, keeps our Serrano neighbors' community of interest intact, and keeps most specific plans intact in District 1 and District 2.

Out of the four Draft Alternative Maps, we urge you to support **El Dorado Hills Community Revised B Alternative Map**. It represents the best available compromise that respects communities of interest in the largest population centers of El Dorado Hills and Cameron Park in El Dorado County. The El Dorado Hills Community Revised B Alternative B Draft Map meets each of the mapping factor priorities, and aligns with the desires of our various Communities of Interest:

1. **Geographic contiguity.**
2. **Geographic integrity of neighborhoods and local communities of interest.**
3. **Geographic integrity of cities or census-designated places.**
4. **Natural and artificial barriers, including streets and boundaries of the county when practicable.**
5. **Boundaries should be easily identifiable and understandable by residents, and bounded by natural and artificial barriers.**
6. **Geographical compactness.**

Thank you for supporting our communities.

Dan and Lori Figgins

1093 Jasmine Circle, WoodRidge development



County of El Dorado Clerk of the Board <edc.cob@edcgov.us>

ovember 16, 2021 Agenda Item 40 - Public Workshop on the 2021 Redistricting Process (Redistricting Public Hearing #5)

John Davey <jdavey@daveygroup.net>

Mon, Nov 15, 2021 at 4:06 AM

To: edc.cob@edcgov.us, The BOSONE <bosone@edcgov.us>, The BOSTWO <bostwo@edcgov.us>, bosthree@edcgov.us, BOS Four <bosfour@edcgov.us>, bosfive@edcgov.us

Hello,

Please accept the attached PDF file as my public comment on the draft alternatives for the fifth public redistricting hearing.

John Davey
Cell 916-752-8183



The County of El Dorado Board of Supervisors Redistricting Comments Nov 15 2021.pdf

85K

The County of El Dorado Board of Supervisors
330 Fair Lane Building A
Placerville, CA 95667

Monday November 15, 2021

Supervisors,

I offer these public comments in support of El Dorado Hills Community Revised B Draft Alternative Map, as you close out the 2021 redistricting process.

As I mentioned in my November 5, 2021 public comment letter to your Board, my initial concern for this redistricting process was that El Dorado Hills, being the largest population center in the County, and unable to remain represented by a single supervisorial district, would end up with several groups of our residents as small percentages of multiple districts, minimizing their suburban voices in largely rural districts.

Further, the draft maps presented for consideration at your November 3, 2021 Hearing completely ignored the Bass Lake Villages, and the Bass Lake area, as a community of interest. As the Vice President of the non-profit Bass Lake Action Committee, I heard from many Bass Lake area, El Dorado Hills, and Cameron Park residents that were also very concerned about those previously presented draft maps. I appreciate that your Board has asked County staff to remedy the issues centered around the Bass Lake area as they approached further refinement of the draft maps for your review.

I believe that the El Dorado Hills Community Revised B Draft Alternative is the superior alternative because it achieves the best compromises that could be realized to respect the goals and desires of multiple communities of interest, and many population areas of El Dorado County.

The El Dorado Hills Community Revised B Draft Alternative Map achieves the following:

- Keeps the Bass Lake Villages intact, in a majority suburban district.
- Keeps the Bass Lake Area aligned with our El Dorado Hills neighbors and community (2005 incorporation boundaries, EDH CSD boundaries, and EDH Fire Department boundaries).
- Keeps most Specific Plans whole, without breaking them up across districts.
- Keeps many El Dorado Hills residents along Malcolm Dixon & Salmon Falls in one district with other Suburban El Dorado Hills residents.
- Keeps Blackstone and Age Restricted Communities south of US50 (Four Seasons, Heritage) who identify as a Community of Interest, in a single District.
- Keeps Serrano residents in a single district, as they have requested, as a community of interest.
- Does not break up neighborhoods by largely using US50 as a boundary line – this keeps neighborhoods together.
- Respects large Suburban areas of the Western Slope by placing a more respectful representative amount of suburban residents in El Dorado Hills and Cameron Park into District 1 and District 2.
- Keeps our Cameron Park neighbors in a single district, as they desire.

A review of the other three alternative draft maps provides reasons why they cannot be supported.

City Alternative Revised 2A

- Does not keep Specific Plans whole.
- Does not keep the Bass Lake Villages in a majority Suburban District.
- Places a few hundred EDH Residents along Malcolm Dixon & Salmon Falls into District 4, where, as a small percentage of District 4, their suburban voices are marginalized.
- Separates the Blackstone village from the Age Restricted Communities of Four Seasons, and Heritage. These communities have expressed a desire to remain a Community of Interest.

City Alternative 2B

- Places Highland Hills, Sterlingshire, and the Malcolm Dixon Rd areas in El Dorado Hills into District 4, as a small percentage of suburban residents into a largely rural district, and ignoring their community identity as part of El Dorado Hills.
- Does not keep Specific Plans whole.
- Separates the community of Mosquito from the balance of the Divide area – Divide residents have expressed a desire to remain bound as a Community of Interest.
- Oddly puts 31 homes from the Bar J Ranch Area in Cameron Park along Castan Dr and parts of Aventine Rd into District 1.

El Dorado Hills Community Alternative Revised A

- Adds a large rural land area to the north side of District 1, which under-represents rural residents as a percentage of District 1, minimizing their rural voice, concerns, and needs.
- Divides Shingle Springs into multiple districts.
- Divides Cameron Park north and south of US50 – Cameron Park residents have expressed a desire to be united in a single district.

I would also again point out that the second largest population center in El Dorado County, the City of South Lake Tahoe, benefits from having local representation via its city Council, while El Dorado Hills, with more than double the population, lacks local representation and determination on issues impacting the largest population center in El Dorado County. Likewise, Cameron Park, the third largest population center in El Dorado County, also lacks the local representation and determination on issues impacting their community, while the City of Placerville, at just over half of Cameron Park's population, does have local representation via its City Council. Representation for the large population centers of El Dorado Hills and Cameron Park at the County level, therefore, is critical.

El Dorado Hills Community Alternative Revised B meets ALL of the mapping factor priorities:

1. Geographic contiguity.
2. Geographic integrity of neighborhoods and local communities of interest.
3. Geographic integrity of cities or census-designated places.
4. Natural and artificial barriers, including streets and boundaries of the county when practicable.
5. Boundaries should be easily identifiable and understandable by residents, and bounded by natural and artificial barriers.

6. Geographical compactness.

I ask you to support El Dorado Hills Community Alternative Revised B as the preferred redistricting map, which supports our El Dorado County communities.

I would also again suggest that a redistricting committee be established as a function of the County Charter, which eliminates the political considerations of Supervisors having to decide on Supervisor District Boundaries. As a function of the County Charter, you would not be binding future Supervisor Boards – it would simply be a function of the County Charter, and eliminate any political complications, while providing increased transparency to residents.

Respectfully,

John Davey
3907 Watsonia Glen Dr
El Dorado Hills, CA 95762



County of El Dorado Clerk of the Board <edc.cob@edcgov.us>

Redistricting

Jennifer O'Connor <jenoasis@gmail.com>
To: edc.cob@edcgov.us

Mon, Nov 15, 2021 at 7:21 AM

I support the "City Based Alternatives - Revised" for EDC redistricting, particularly alternative 2A.

I do NOT support the EDH Draft Alternative Revised A!!

Sincerely,
Jennifer O'Connor
3413 Sweetwater Trail
Cool, California



County of El Dorado Clerk of the Board <edc.cob@edcgov.us>

November 16, 2021 Agenda Item 40 - Public Workshop on the 2021 Redistricting Process (Redistricting Public Hearing #5)

Kurt Keyser <kurt.keyser@gmail.com>

Mon, Nov 15, 2021 at 7:54 AM

To: EDC COB <edc.cob@edcgov.us>

Cc: bosone@edcgov.us, bostwo@edcgov.us, bosthree@edcgov.us, bosfour@edcgov.us, bosfive@edcgov.us

Honorable Supervisors,

As residents of the Bass Lake Area in El Dorado Hills, we deeply appreciate your concern and instructions to County staff to keep our Bass Lake Community of Interest intact in a single supervisorial district.

In reviewing the draft alternative maps as proposed, we believe that the best option for representing the interests of our Bass Lake Community, El Dorado Hills, our El Dorado Hills Neighbors' Community of Interest south of US50, and our suburban neighbors in Cameron Park, is to support the **El Dorado Hills Community Revised B Map**.

This map keeps our communities aligned, supports suburban communities of interest where no local city representation exists, keeps the Bass Lake Community intact, keeps Cameron Park in a single district, keeps our Serrano neighbors' community of interest intact, and keeps most specific plans intact in District 1 and District 2.

Out of the four Draft Alternative Maps, we urge you to support **El Dorado Hills Community Revised B Alternative Map**. It represents the best available compromise that respects communities of interest in the largest population centers of El Dorado Hills and Cameron Park in El Dorado County. The El Dorado Hills Community Revised B Alternative B Draft Map meets each of the mapping factor priorities, and aligns with the desires of our various Communities of Interest:

- *Geographic contiguity.
- *Geographic integrity of neighborhoods and local communities of interest.
- *Geographic integrity of cities or census-designated places.
- *Natural and artificial barriers, including streets and boundaries of the county when practicable.
- *Boundaries should be easily identifiable and understandable by residents, and bounded by natural and artificial barriers.
- *Geographical compactness.

Thank you for supporting our communities.



County of El Dorado Clerk of the Board <edc.cob@edcgov.us>

November 16, 2021 Agenda Item 40 – Public Workshop on the 2 021 Redistricting Process (Redistricting Public Hearing #5)

Teri Harness <teriharness@comcast.net>

Mon, Nov 15, 2021 at 8:37 AM

To: "edc.cob@edcgov.us" <edc.cob@edcgov.us>

Cc: "bostwo@edcgov.us" <bostwo@edcgov.us>, "bosthree@edcgov.us" <bosthree@edcgov.us>, "bosfour@edcgov.us" <bosfour@edcgov.us>, "bosfive@edcgov.us" <bosfive@edcgov.us>, "bosone@edcgov.us" <bosone@edcgov.us>

Honorable Supervisors,

As residents of the Bass Lake Area in El Dorado Hills, we deeply appreciate your concern and instructions to County staff to keep our Bass Lake Community of Interest intact in a single supervisorial district.

In reviewing the draft alternative maps as proposed, we believe that the best option for representing the interests of our Bass Lake Community, El Dorado Hills, our El Dorado Hills Neighbors' Community of Interest south of US50, and our suburban neighbors in Cameron Park, is to support the El Dorado Hills Community Revised B Map.

This map keeps our communities aligned, supports suburban communities of interest where no local city representation exists, keeps the Bass Lake Community intact, keeps Cameron Park in a single district, keeps our Serrano neighbors' community of interest intact, and keeps most specific plans intact in District 1 and District 2.

Out of the four Draft Alternative Maps, we urge you to support El Dorado Hills Community Revised B Alternative Map. It represents the best available compromise that respects communities of interest in the largest population centers of El Dorado Hills and Cameron Park in El Dorado County.

The El Dorado Hills Community Revised B Alternative Draft Map meets each of the mapping factor priorities, and aligns with the desires of our various Communities of Interest:

- Geographic contiguity.
- Geographic integrity of neighborhoods and local communities of interest.
- Geographic integrity of cities or census-designated places.
- Natural and artificial barriers, including streets and boundaries of the county when practicable.
- Boundaries should be easily identifiable and understandable by residents, and bounded by natural and artificial barriers.
- Geographical compactness.

Thank you for supporting our communities.

-Margaret and Roger Harness
3214 Tea Rose Drive
El Dorado Hills, CA 95762



County of El Dorado Clerk of the Board <edc.cob@edcgov.us>

Re: El Dorado Hills Redistricting

John Meade <jmeade22@gmail.com>

Mon, Nov 15, 2021 at 9:14 AM

To: edc.cob@edcgov.us

Supervisors,

I strongly support the redistricting maps A and B, which keeps the shared community and its' interests together. The other options don't work.

Thanks,

John & Diane Meade

(925)682-7621

JMeade22@gmail.com

5755 Avila Loop

EDH, CA. 95762

On Mon, Nov 15, 2021 at 9:10 AM John Meade <jmeade22@gmail.com> wrote:

Supervisors,

I strongly support the redistricting maps A and B, which keeps the shared community and its' interests together. The other options don't work.

Thanks,

John & Diane Meade

(925)682-7621

JMeade22@gmail.com

5755 Avila Loop

EDH, CA. 95762



County of El Dorado Clerk of the Board <edc.cob@edcgov.us>

October 16, 2021 Agenda Item 40 - Public Workshop on the 2021 Redistricting Process (Redistricting Public Hearing #5)

John Dovey <doveman@msn.com>
To: "edc.cob@edcgov.us" <edc.cob@edcgov.us>

Mon, Nov 15, 2021 at 10:33 AM

Honorable Supervisors,

As residents of the Bass Lake Area in El Dorado Hills, we deeply appreciate your concern and instructions to County staff to keep our Bass Lake Community of Interest intact in a single supervisorial district.

In reviewing the draft alternative maps as proposed, we believe that the best option for representing the interests of our Bass Lake Community, El Dorado Hills, our El Dorado Hills Neighbors' Community of Interest south of US50, and our suburban neighbors in Cameron Park, is to support the **El Dorado Hills Community Revised B Map**.

This map keeps our communities aligned, supports suburban communities of interest where no local city representation exists, keeps the Bass Lake Community intact, keeps Cameron Park in a single district, keeps our Serrano neighbors' community of interest intact, and keeps most specific plans intact in District 1 and District 2.

Out of the four Draft Alternative Maps, we urge you to support **El Dorado Hills Community Revised B Alternative Map**. It represents the best available compromise that respects communities of interest in the largest population centers of El Dorado Hills and Cameron Park in El Dorado County. The El Dorado Hills Community Revised B Alternative B Draft Map meets each of the mapping factor priorities, and aligns with the desires of our various Communities of Interest:

1. **Geographic contiguity.**
2. **Geographic integrity of neighborhoods and local communities of interest.**
3. **Geographic integrity of cities or census-designated places.**
4. **Natural and artificial barriers, including streets and boundaries of the county when practicable.**
5. **Boundaries should be easily identifiable and understandable by residents, and bounded by natural and artificial barriers.**
6. **Geographical compactness.**

Thank you for supporting our communities.

Continued Success,

John & Lisa Dovey

511 Prairie Falcon Ct

El Dorado Hills, CA 91757



County of El Dorado Clerk of the Board <edc.cob@edcgov.us>

October 16, 2021 Agenda Item 40 - Public Workshop on the 2021 Redistricting Process (Redistricting Public Hearing #5)

Shauna Herrman <shaunaherrman@gmail.com>

Mon, Nov 15, 2021 at 10:51 AM

To: edc.cob@edcgov.us

Cc: The BOSONE <bosone@edcgov.us>, bostwo@edcgov.us, bosthree@edcgov.us, bosfour@edcgov.us, bosfive@edcgov.us

Honorable Supervisors,

As residents of the Bass Lake Area in El Dorado Hills, we deeply appreciate your concern and instructions to County staff to keep our Bass Lake Community of Interest intact in a single supervisorial district.

In reviewing the draft alternative maps as proposed, we believe that the best option for representing the interests of our Bass Lake Community, El Dorado Hills, our El Dorado Hills Neighbors' Community of Interest south of US50, and our suburban neighbors in Cameron Park, is to support the **El Dorado Hills Community Revised B Map**.

This map keeps our communities aligned, supports suburban communities of interest where no local city representation exists, keeps the Bass Lake Community intact, keeps Cameron Park in a single district, keeps our Serrano neighbors' community of interest intact, and keeps most specific plans intact in District 1 and District 2.

Out of the four Draft Alternative Maps, we urge you to support **El Dorado Hills Community Revised B Alternative Map**. It represents the best available compromise that respects communities of interest in the largest population centers of El Dorado Hills and Cameron Park in El Dorado County. The El Dorado Hills Community Revised B Alternative B Draft Map meets each of the mapping factor priorities, and aligns with the desires of our various Communities of Interest:

1. **Geographic contiguity.**
2. **Geographic integrity of neighborhoods and local communities of interest.**
3. **Geographic integrity of cities or census-designated places.**
4. **Natural and artificial barriers, including streets and boundaries of the county when practicable.**
5. **Boundaries should be easily identifiable and understandable by residents, and bounded by natural and artificial barriers.**
6. **Geographical compactness.**

Thank you for supporting our communities.

Shauna Herrman



County of El Dorado Clerk of the Board <edc.cob@edcgov.us>

October 16, 2021 Agenda Item 40 - Public Workshop on the 2021 Redistricting Process (Redistricting Public Hearing #5)

Chris Herrman <chrisherrman92@gmail.com>

Mon, Nov 15, 2021 at 10:53 AM

To: edc.cob@edcgov.us

Cc: bosfive@edcgov.us, bosfour@edcgov.us, bosthree@edcgov.us, bostwo@edcgov.us, The BOSONE <bosone@edcgov.us>

Honorable Supervisors,

As residents of the Bass Lake Area in El Dorado Hills, we deeply appreciate your concern and instructions to County staff to keep our Bass Lake Community of Interest intact in a single supervisorial district.

In reviewing the draft alternative maps as proposed, we believe that the best option for representing the interests of our Bass Lake Community, El Dorado Hills, our El Dorado Hills Neighbors' Community of Interest south of US50, and our suburban neighbors in Cameron Park, is to support the **El Dorado Hills Community Revised B Map**.

This map keeps our communities aligned, supports suburban communities of interest where no local city representation exists, keeps the Bass Lake Community intact, keeps Cameron Park in a single district, keeps our Serrano neighbors' community of interest intact, and keeps most specific plans intact in District 1 and District 2.

Out of the four Draft Alternative Maps, we urge you to support **El Dorado Hills Community Revised B Alternative Map**. It represents the best available compromise that respects communities of interest in the largest population centers of El Dorado Hills and Cameron Park in El Dorado County. The El Dorado Hills Community Revised B Alternative B Draft Map meets each of the mapping factor priorities, and aligns with the desires of our various Communities of Interest:

1. **Geographic contiguity.**
2. **Geographic integrity of neighborhoods and local communities of interest.**
3. **Geographic integrity of cities or census-designated places.**
4. **Natural and artificial barriers, including streets and boundaries of the county when practicable.**
5. **Boundaries should be easily identifiable and understandable by residents, and bounded by natural and artificial barriers.**
6. **Geographical compactness.**

Thank you for supporting our communities.

Chris Herrman

2213 Summer Drive, El Dorado Hills 95762



County of El Dorado Clerk of the Board <edc.cob@edcgov.us>

RE: November 16, 2021 Agenda Item 40 - Public Workshop on the 2021 Redistricting Process (Redistricting Public Hearing #5) - New Alternative Maps for the Redistricting of El Dorado County 2021

hpkp@aol.com <hpkp@aol.com>

Mon, Nov 15, 2021 at 11:25 AM

Reply-To: hpkp@aol.com

To: redistricting@edcgov.us, edc.cob@edcgov.us, bosone@edcgov.us, bostwo@edcgov.us, bosthree@edcgov.us, bosfour@edcgov.us, bosfive@edcgov.us

Cc: jdavey@daveygroup.net, jan.buxton@sbcglobal.net, brunet@aol.com, wbrunet@comcast.net, rcassity59@gmail.com, rcng925@gmail.com, hpkp@aol.com

TO: Clerk of the Board of Supervisors, Redistricting Committee, District 1 Supervisor - John Hidahl, District 2 Supervisor - George Turnboo, District 3 Supervisor - Wendy Thomas, District 4 Supervisor - Lori Parlin, District 5 Supervisor - Sue Novasel

November 14, 2021

Subject: November 16, 2021 Agenda Item 40 - Public Workshop on the 2021 Redistricting Process (Redistricting Public Hearing #5) - New Alternative Maps for the Redistricting of El Dorado County 2021

Honorable Supervisors,

The residents of the Bass Lake area (which includes the Bass Lake Villages, Bridlewood Canyon, the El Dorado Hills Specific Plan, and the Bass Lake Hills Specific Plan), appreciate that the Board of Supervisors (BOS) gave consideration to and allowed the introduction of a new redistricting map at the November 3, 2021, Redistricting hearing which was created by both members of the El Dorado Hills community and the Chamber of Commerce.

This map has since been "tweaked" into two maps, the **El Dorado Hills Community Revised Alternative Map A** and the **El Dorado Hills Community Revised Alternative Map B** along with the **City Revised Alternative 2A** and **City Revised Alternative 2B** for discussion at the 130PM Board Public Workshop on November 16, 2021.

While keeping our Bass Lake Villages Community of Interest in a single District as well as the Bass Lake Community as a whole, the mapping factors and goals are fully accomplished for our area by three of the four maps most recently submitted for consideration by the BOS.

1. **Geographic contiguity.**
2. **Geographic integrity of neighborhoods and local communities of interest.**
3. **Geographic integrity of cities or census-designated places.**
4. **Natural and artificial barriers, including streets and boundaries of the county when practicable.**
5. **Boundaries should be easily identifiable and understandable by residents, and bounded by natural and artificial barriers.**
6. **Geographical compactness.**

However, after reviewing the current four proposed draft maps, we support the **El Dorado Hills Community Revised B Alternative Map** as the best option that would represent the interests of our Bass Lake Community, El Dorado Hills, our El Dorado Hills Neighbors' Community of Interest south of US50, as well as our suburban neighbors in Cameron Park.

Approval of the **El Dorado Hills Community Revised B Alternative Map** would not only keep our communities aligned, it would, also, support suburban communities of interest where no local city representation exists, keep the Bass Lake Community and our Serrano neighbors' community of interest and most of the specific plans in District 1 and District 2 intact, while keeping Cameron Park in a single district.

We urge you to support the **El Dorado Hills Community Revised B Alternative Map** as out of the four Draft Alternative Maps, it represents the best available compromise that respects the communities of interest in the largest population centers of El Dorado Hills and Cameron Park in El Dorado County.

Thank you for the opportunity to comment and for your consideration.

Respectfully,

Kathy Prevost
President, Bass Lake Action Committee

John Davey

Vice President, Bass Lake Action Committee

www.basslakeaction.org

<https://facebook.com/BassLakeAction>



County of El Dorado Clerk of the Board <edc.cob@edcgov.us>

Bass Lake Bridlewood Canyon

mary jo chafin <chafinmj@gmail.com>

Mon, Nov 15, 2021 at 11:35 AM

To: edc.cob@edcgov.us

Hello,

I have lived in Bridlewood Canyon for about 25 years. Original owner. I support Redistricting Plan B to remain in the same District with Parker development and Serrano communities. I purchased and had my house constructed in Bridlewood Canyon because it was in El Dorado county, El Dorado Hills. I thought about moving several times but my neighbors and surrounding communities are so important to me I just could not relocate anywhere as comfortable as it is here in Bridlewood Canyon, EDH.

Thank you for your time.



County of El Dorado Clerk of the Board <edc.cob@edcgov.us>

RE: November 16, 2021 Agenda Item 40 - Public Workshop on the 2021 Redistricting Process (Redistricting Public Hearing #5) - New Alternative Maps for the Redistricting of El Dorado County 2021

hpkp@aol.com <hpkp@aol.com>
Reply-To: hpkp@aol.com
To: edc.cob@edcgov.us

Mon, Nov 15, 2021 at 11:43 AM

I have attached the letter in a document form, thank you, Kathy Prevost

TO: Clerk of the Board of Supervisors, Redistricting Committee, District 1
Supervisor - John Hidahl, District 2 Supervisor - George Turnboo, District 3
Supervisor - Wendy Thomas, District 4 Supervisor - Lori Parlin, District 5
Supervisor - Sue Novasel

November 14, 2021

Subject: November 16, 2021 Agenda Item 40 - Public Workshop on the 2021 Redistricting Process (Redistricting Public Hearing #5) - New Alternative Maps for the Redistricting of El Dorado County 2021

Honorable Supervisors,

The residents of the Bass Lake area (which includes the Bass Lake Villages, Bridlewood Canyon, the El Dorado Hills Specific Plan, and the Bass Lake Hills Specific Plan), appreciate that the Board of Supervisors (BOS) gave consideration to and allowed the introduction of a new redistricting map at the November 3, 2021, Redistricting hearing which was created by both members of the El Dorado Hills community and the Chamber of Commerce.

This map has since been "tweaked" into two maps, the **El Dorado Hills Community Revised Alternative Map A** and the **El Dorado Hills Community Revised Alternative Map B** along with the **City Revised Alternative 2A** and **City Revised Alternative 2B** for discussion at the 130PM Board Public Workshop on November 16, 2021.

While keeping our Bass Lake Villages Community of Interest in a single District as well as the Bass Lake Community as a whole, the mapping factors and goals are fully accomplished for our area by three of the four maps most recently submitted for consideration by the BOS.

1. **Geographic contiguity.**
2. **Geographic integrity of neighborhoods and local communities of interest.**
3. **Geographic integrity of cities or census-designated places.**
4. **Natural and artificial barriers, including streets and boundaries of the county when practicable.**
5. **Boundaries should be easily identifiable and understandable by residents, and bounded by natural and artificial barriers.**
6. **Geographical compactness.**

However, after reviewing the current four proposed draft maps, we support the **El Dorado Hills Community Revised B Alternative Map** as the best option that would represent the interests of our Bass Lake Community, El Dorado Hills, our El Dorado Hills Neighbors' Community of Interest south of US50, as well as our suburban neighbors in Cameron Park.

Approval of the **El Dorado Hills Community Revised B Alternative Map** would not only keep our communities aligned, it would, also, support suburban communities of interest where no local city representation exists, keep the Bass Lake Community and our Serrano neighbors' community of interest and most of the specific plans in District 1 and District 2 intact, while keeping Cameron Park in a single district.

We urge you to support the **El Dorado Hills Community Revised B Alternative Map** as out of the four Draft Alternative Maps, it represents the best available compromise that respects the communities of interest in the largest population centers of El Dorado Hills and Cameron Park in El Dorado County.

Thank you for the opportunity to comment and for your consideration.

Respectfully,

Kathy Prevost
President, Bass Lake Action Committee

John Davey

Vice President, Bass Lake Action Committee

www.basslakeaction.org

<https://facebook.com/BassLakeAction>



Redistricting meeting - 11-16-2021.docx

16K

redistricting@edcgov.us

edc.cob@edcgov.us - Clerk of the Board of Supervisor

bosone@edcgov.us - District 1 Supervisor

bostwo@edcgov.us - District 2 Supervisor

bosthree@edcgov.us - District 3 Supervisor

bosfour@edcgov.us - District 4 Supervisor

bosfive@edcgov.us - District 5 Supervisor

November 14, 2021

Subject: November 16, 2021 Agenda Item 40 - Public Workshop on the 2021 Redistricting Process (Redistricting Public Hearing #5) - New Alternative Maps for the Redistricting of El Dorado County 2021

Honorable Supervisors,

The residents of the Bass Lake area (which includes the Bass Lake Villages, Bridlewood Canyon, the El Dorado Hills Specific Plan, and the Bass Lake Hills Specific Plan), appreciate that the Board of Supervisors (BOS) gave consideration to and allowed the introduction of a new redistricting map at the November 3, 2021, Redistricting hearing which was created by both members of the El Dorado Hills community and the Chamber of Commerce.

This map has since been "tweaked" into two maps, the **El Dorado Hills Community Revised Alternative Map A** and the **El Dorado Hills Community Revised Alternative Map B** along with the **City Revised Alternative 2A** and **City Revised Alternative 2B** for discussion at the 130PM Board Public Workshop on November 16, 2021.

While keeping our Bass Lake Villages Community of Interest in a single District as well as the Bass Lake Community as a whole, the mapping factors and goals are fully accomplished for our area by three of the four maps most recently submitted for consideration by the BOS.

1. **Geographic contiguity.**
2. **Geographic integrity of neighborhoods and local communities of interest.**
3. **Geographic integrity of cities or census-designated places.**
4. **Natural and artificial barriers, including streets and boundaries of the county when practicable.**

5. **Boundaries should be easily identifiable and understandable by residents, and bounded by natural and artificial barriers.**
6. **Geographical compactness.**

However, after reviewing the current four proposed draft maps, we support the **El Dorado Hills Community Revised B Alternative Map** as the best option that would represent the interests of our Bass Lake Community, El Dorado Hills, our El Dorado Hills Neighbors' Community of Interest south of US50, as well as our suburban neighbors in Cameron Park.

Approval of the **El Dorado Hills Community Revised B Alternative Map** would not only keep our communities aligned, it would, also, support suburban communities of interest where no local city representation exists, keep the Bass Lake Community and our Serrano neighbors' community of interest and most of the specific plans in District 1 and District 2 intact, while keeping Cameron Park in a single district.

We urge you to support the **El Dorado Hills Community Revised B Alternative Map** as out of the four Draft Alternative Maps, it represents the best available compromise that respects the communities of interest in the largest population centers of El Dorado Hills and Cameron Park in El Dorado County.

Thank you for the opportunity to comment and for your consideration.

Respectfully,

Kathy Prevost
President, Bass Lake Action Committee

John Davey
Vice President, Bass Lake Action Committee
www.basslakeaction.org
<https://facebook.com/BassLakeAction>



County of El Dorado Clerk of the Board <edc.cob@edcgov.us>

Fwd: Redistricting

Lori Parlin <lori.parlin@edcgov.us>

Mon, Nov 15, 2021 at 12:25 PM

To: County of El Dorado Clerk of the Board <edc.cob@edcgov.us>

Please distribute and add to the public record.

Thank you,

Lori Parlin

El Dorado County District IV Supervisor

Phone: (530) 621-6513

[✉ Sign Up for District IV Email Updates](#)[f Follow Us on Facebook](#)

CONFIDENTIALITY NOTICE: This electronic communication with its contents may contain confidential and/or privileged information. It is solely for the use of the intended recipient(s), except as otherwise permitted. Unauthorized interception, review, use, or disclosure is prohibited and may violate applicable laws including the Electronic Communications Privacy Act. If you are not the intended recipient, or authorized to receive for the intended recipient, please contact the sender and destroy all copies of the communication. Thank you for your consideration.

----- Forwarded message -----

From: **Karl Weiland** <karlweiland53@gmail.com>

Date: Mon, Nov 15, 2021 at 7:35 AM

Subject: Redistricting

To: <lori.parlin@edcgov.us>

Good morning,

I oppose any restricting plan that separates representation for the Mosquito community from the rest of the divide.

--

Karl Weiland

El Dorado County resident

530.642.1001



County of El Dorado Clerk of the Board <edc.cob@edcgov.us>

November 16, 2021 Agenda Item 40 – Public Workshop on the 2021 Redistricting Process (Redistricting Public Hearing #5)

cherj21@yahoo.com <cherj21@yahoo.com>

Mon, Nov 15, 2021 at 12:20 PM

To: "edc.cob@edcgov.us" <edc.cob@edcgov.us>

Cc: "bosone@edcgov.us" <bosone@edcgov.us>, "bostwo@edcgov.us" <bostwo@edcgov.us>, "bostthree@edcgov.us" <bostthree@edcgov.us>, "bosfour@edcgov.us" <bosfour@edcgov.us>, "bosfive@edcgov.us" <bosfive@edcgov.us>

Honorable Supervisors,

Thank you for taking the time to listen to all El Dorado County residents on the Redistricting Process.

As residents of the Bass Lake Area in El Dorado Hills, we deeply appreciate your concern and instructions to County staff to keep our Bass Lake Community of Interest intact in a single supervisorial district.

In reviewing the draft alternative maps as proposed, we believe that the best option for representing the interests of our Bass Lake Community, El Dorado Hills, our El Dorado Hills Neighbors' Community of Interest south of US50, and our suburban neighbors in Cameron Park, is to support the El Dorado Hills Community Revised B Map.

This map keeps our communities aligned, supports suburban communities of interest where no local city representation exists, keeps the Bass Lake Community intact, keeps Cameron Park in a single district, keeps our Serrano neighbors' community of interest intact, and keeps most specific plans intact in District 1 and District 2.

Out of the four Draft Alternative Maps, we urge you to support El Dorado Hills Community Revised B Alternative Map. It represents the best available compromise that respects communities of interest in the largest population centers of El Dorado Hills and Cameron Park in El Dorado County. The El Dorado Hills Community Revised B Alternative Draft Map meets each of the mapping factor priorities, and aligns with the desires of our various Communities of Interest:

Geographic contiguity.

Geographic integrity of neighborhoods and local communities of interest.

Geographic integrity of cities or census-designated places.

Natural and artificial barriers, including streets and boundaries of the county when practicable.

Boundaries should be easily identifiable and understandable by residents, and bounded by natural and artificial barriers.

Geographical compactness.

Thank you for supporting our communities.

Respectfully Submitted,

William and Cherry Jacques

3980 Magnolia Hills Drive

El Dorado Hills, CA 95762

530-676-3980



County of El Dorado Clerk of the Board <edc.cob@edcgov.us>

El Dorado County Redistricting Map

Rick Burgardt <rsburgardt@comcast.net>

Mon, Nov 15, 2021 at 12:56 PM

To: "edc.cob@edcgov.us" <edc.cob@edcgov.us>

Dear BOS,

I moved to El Dorado Hills to the Heritage Community 2.5 years ago from the Bay area to escape the traffic, congestion, crime and increasing taxes.

El Dorado Hills south of 50 offers a relaxed living environment with a rural setting.

After reviewing the 4 proposed redistricting maps, the community Map #B clearly demonstrates the best option.

1. Residential areas remain intact with similar issues and concerns.

Heritage, Blackstone and Four Seasons and areas along Latrobe remain together in District 2.

2. A border at White Rock Rd makes sense with Town Center in District 1 and Commercial areas and residents south for White Rock in District 2.

3. Areas of Serrano and Bass Lake remain in District 1 as residents demand.

4. Reflects the city priority to an extent with Cameron Park represented in one area and EDH north of White Rock Rd all in District 1.

5. Like many residents south of White Rock Rd, I voted for George Turnboo and want to keep him as our County Supervisor. His slow growth view in a rural setting is reflected in our community.

I trust that you will make the correct decision and select Community Map #B.

Thank you!

Rick Burgardt
5045 Del Mar Dr.
El Dorado Hills, CA



County of El Dorado Clerk of the Board <edc.cob@edcgov.us>

Nov. 16, 2021 Agenda Item 40 - 2021 Redistricting Process

JAMES MACLEOD <jlsmacleod@sbcglobal.net>

Mon, Nov 15, 2021 at 12:56 PM

To: "edc.cob@edcgov.us" <edc.cob@edcgov.us>

Cc: "bosone@edcgov.us" <bosone@edcgov.us>, "bostwo@edcgov.us" <bostwo@edcgov.us>, "bosthree@edcgov.us" <bosthree@edcgov.us>, "bosfour@edcgov.us" <bosfour@edcgov.us>, "bosfive@edcgov.us" <bosfive@edcgov.us>

Honorable Supervisors,

As residents of the Bass Lake Area in El Dorado Hills, we deeply appreciate your concern and instructions to County staff to keep our Bass Lake Community of Interest intact in a single supervisorial district. In reviewing the draft alternative maps as proposed, we believe that the best option of representing the interests of our Bass Lake Community, El Dorado Hills, our El Dorado Hills Neighbors' Community of Interest south of US50, and our suburban neighbors in Cameron Park, is to support the **El Dorado Hills Community**

Revised B Alternative Map. This map keeps our communities aligned, supports suburban communities of interest where no local city representation exists, keeps the Bass Lake Community intact, keeps Cameron Park in a single district, keeps our Serrano neighbors' community of interest intact, and keeps most specific plans intact in Districts 1 and 2.

Of the four Draft Alternate Maps, the **El Dorado Hills Community Revised B Alternative Map** represents the best available compromise that respects communities of interest in the largest population centers of El Dorado Hills and Cameron Park, as well as meets the mapping factor priorities of geographic contiguity and integrity of neighborhoods and cities and easily identifiable and understandable boundaries that align with the desires of various Communities of Interest within El Dorado County. Thank you for supporting our communities.

Respectfully,

James and Lillian MacLeod
2089 Summer Drive
El Dorado Hills



County of El Dorado Clerk of the Board <edc.cob@edcgov.us>

Redistricting Map Preference: EDH Community Draft Redistricting Alternative - Revised A

Corde Wagner <corde.wagner@gmail.com>

Mon, Nov 15, 2021 at 1:14 PM

To: edc.cob@edcgov.us, bostwo@edcgov.us, bosone@edcgov.us, bosthree@edcgov.us, bosfour@edcgov.us, bosfive@edcgov.us

Cc: "cladwag@hotmail.com" <cladwag@hotmail.com>

Dear Board of Supervisors:

My wife Alma and I are residents of El Dorado Hills and El Dorado County. We live in District 2 and we voted for George Turnbo as the person we want to represent our family and our voices.

With regard to the proposed redistricting maps, it is our strong desire that the County Supervisors choose **"EDH Community Draft Redistricting Alternative - Revised A"** for how the county will be represented and redistricted. This map makes the most sense for us and the communities, cites and residents who will be most affected by any changes to county boundaries.

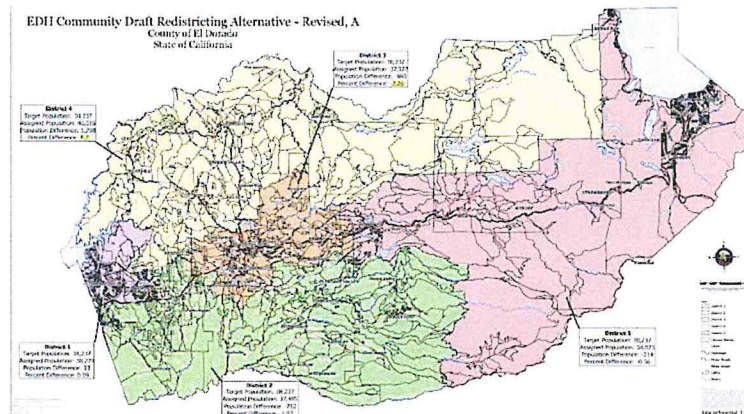
Thank you for your dedication and support for our County.

Respectfully,

Corde and Alma Wagner

cell: 408.839.2102

8507 Avelin PL, EDH, 95762





County of El Dorado Clerk of the Board <edc.cob@edcgov.us>

November 16,2021Agenda Item 40-Public Workshop on the 2021 Redistricting Process (Redistricting Public Hearing #5)

JULIA FISHER <julia.judy@comcast.net>

Mon, Nov 15, 2021 at 1:18 PM

To: "edc.cob@edcgov.us" <edc.cob@edcgov.us>

Cc: "bosone@edcgov.us" <bosone@edcgov.us>, "bostwo@edcgov.us" <bostwo@edcgov.us>, "bostthree@edcgov.us" <bostthree@edcgov.us>, "bosfour@edcgov.us" <bosfour@edcgov.us>, "bosfive@edcgov.us" <bosfive@edcgov.us>

Honorable Supervisors,

As residents of the Bass Lake Area in El Dorado Hills, we deeply appreciate your concern and instructions to County staff to keep our Bass Lake Lake Community of Interest intact in a single supervisorial district.

In reviewing the draft alternative maps as proposed, we believe that the best option for representing the interests of our Bass Lake Community, El Dorado Hills , our El Dorado Hills Neighbors' Community of Interest south of US50, and our suburban neighbors in Cameron Park, is to support the El Dorado Hills Community Revised B Map.

This map keeps our communities aligned, supports suburban communities of interest where no local city representation exists, keeps the Bass Lake Community intact, keeps Cameron Park in a single district, keeps our Serrano neighbors' community of interest intact, and keeps most specific plans intact in District 1 and District 2.

Out of the four Draft Alternative Maps, we urge you to support El Dorado Hills Community Revised B Alternative Map. It represents the best available compromise that respects communities of interest in the largest population centers of El Dorado Hills and Cameron Park in El Dorado County. The El Dorado Hills Community Revised B Alternative Draft Map meets each of the mapping factor priorities, and aligns with the desires of our various Communities of Interest:

1. Geographic contiguity
2. Geographic integrity of neighborhoods and local communities of interest
3. Geographic integrity of cities or census-designated places
4. Natural and artificial barriers, including streets and boundaries of the county when practicable
5. Boundaries should be easily identifiable and understandable by residents, and bounded by natural and artificial barriers.
6. Geographical compactness

Thank you for supporting our communities.

Sincerely,
Julia and Davis Fisher



County of El Dorado Clerk of the Board <edc.cob@edcgov.us>

November 16, 2021 Agenda Item 40 – Public Workshop on the 2021 Redistricting Process (Redistricting Public Hearing #5)

Joan Scoville <robjoan@me.com>

Mon, Nov 15, 2021 at 1:32 PM

To: edc.cob@edcgov.us

Cc: bosone@edcgov.us, bostwo@edcgov.us, bosthree@edcgov.us, bosfour@edcgov.us

Honorable Supervisors,

As residents of the Bass Lake Area in El Dorado Hills, we deeply appreciate your concern and instructions to County staff to keep our Bass Lake Community of Interest intact in a single supervisorial district.

In reviewing the draft alternative maps as proposed, we believe that the best option for representing the interests of our Bass Lake Community, El Dorado Hills, our El Dorado Hills Neighbors' Community of Interest south of US50, and our suburban neighbors in Cameron Park, is to support the El Dorado Hills Community [Revised B Map](#).

This map keeps our communities aligned, supports suburban communities of interest where no local city representation exists, keeps the Bass Lake Community intact, keeps Cameron Park in a single district, keeps our Serrano neighbors' community of interest intact, and keeps most specific plans intact in District 1 and District 2. Out of the four Draft Alternative Maps, [we urge you to support El Dorado Hills Community Revised B Alternative Map](#). It represents the best available compromise that respects communities of interest in the largest population centers of El Dorado Hills and Cameron Park in El Dorado County. The El Dorado Hills Community Revised B Alternative Draft Map meets each of the mapping factor priorities, and aligns with the desires of our various Communities of Interest:

Geographic contiguity.

Geographic integrity of neighborhoods and local communities of interest.

Geographic integrity of cities or census-designated places.

Natural and artificial barriers, including streets and boundaries of the county when practicable.

Boundaries should be easily identifiable and understandable by residents, and bounded by natural and artificial barriers.

Geographical compactness.

Thank you for supporting our communities.

Rob & Joan Scoville

[3967 Watsonia Glen Dr](#)

[El Dorado Hills 95762](#)



County of El Dorado Clerk of the Board <edc.cob@edcgov.us>

El Dorado County Redistricting

Roberta Chisam <robchisam@gmail.com>

Mon, Nov 15, 2021 at 1:40 PM

To: edc.cob@edcgov.us

Dear BOS,

I moved to El Dorado Hills to the Heritage Community 2.5 years ago from the Bay area to escape the traffic, congestion, crime and increasing taxes.

El Dorado Hills south of 50 offers a relaxed living environment with a rural setting.

After reviewing the 4 proposed redistricting maps, the community Map #B clearly demonstrates the best option.

1. Residential areas remain intact with similar issues and concerns.

Heritage, Blackstone and Four Seasons and areas along Latrobe remain together in District 2.

2. A border at White Rock Rd makes sense with Town Center in District 1 and Commercial areas and residents south for White Rock in District 2.

3. Areas of Serrano and Bass Lake remain in District 1 as residents demand.

4. Reflects the city priority to an extent with Cameron Park represented in one area and EDH north of White Rock

Rd. all in District 1.

5. Like many residents south of White Rock Rd, I voted for George Turnboo and want to keep him as our County Supervisor.

His slow growth view in a rural setting is reflected in our community. George has also been working closely with our community on some local issues. I do not see John Hidahl really caring about the issues in our community. In fact, I have witnessed his negative attitude towards our concerns when I attended a Supervisors meeting earlier this year. John seems more concerned about growth and not the issues that come with it that the people living in the community will experience.

I trust that you will make the correct decision and select Community Map #B.

Thank you!

Roberta and Scott Chisam
5066 Del Mar Drive
El Dorado Hills, Ca 95762



County of El Dorado Clerk of the Board <edc.cob@edcgov.us>

El Dorado County Redistricting Map

pboretto@aol.com <pboretto@aol.com>
Reply-To: pboretto@aol.com
To: "edc.cob@edcgov.us" <edc.cob@edcgov.us>

Mon, Nov 15, 2021 at 2:08 PM

Dear BOS,

I moved to El Dorado Hills to the Heritage Community 2.5 years ago from the Bay area to escape the traffic, congestion, crime and increasing taxes.

El Dorado Hills south of 50 offers a relaxed living environment with a rural setting. After reviewing the 4 proposed redistricting maps, the community Map #A clearly demonstrates the best option.

1. Residential areas remain intact with similar issues and concerns.
Heritage, Blackstone and Four Seasons and areas along Latrobe remain together in District 2.
2. Areas of Serrano and Bass Lake remain in District 1 as residents demand.

I trust that you will make the correct decision and select Community Map #A.

Thank you!
Phil & Shirley Boretto
5037 Deel Mar Drive
EDH, CA 95762



County of El Dorado Clerk of the Board <edc.cob@edcgov.us>

Subject: November 16, 2021 Agenda Item 40 - Public Workshop on the 2021 Redistricting Process (Redistricting Public Hearing #5)

Nora Trengove <nora.trengove@gmail.com>

Mon, Nov 15, 2021 at 2:37 PM

To: edc.cob@edcgov.us

Cc: bosone@edcgov.us, bostwo@edcgov.us, bosthree@edcgov.us, bosfour@edcgov.us, bosfive@edcgov.us

Honorable Supervisors,

As residents of the Bass Lake Area in El Dorado Hills, we deeply appreciate your concern and instructions to County staff to keep our Bass Lake Community of Interest intact in a single supervisorial district.

In reviewing the draft alternative maps as proposed, we believe that the best option for representing the interests of our Bass Lake Community, El Dorado Hills, our El Dorado Hills Neighbors' Community of Interest south of US50, and our suburban neighbors in Cameron Park, is to support the **El Dorado Hills Community Revised B Map**.

This map keeps our communities aligned, supports suburban communities of interest where no local city representation exists, keeps the Bass Lake Community intact, keeps Cameron Park in a single district, keeps our Serrano neighbors' community of interest intact, and keeps most specific plans intact in District 1 and District 2.

Out of the four Draft Alternative Maps, we urge you to support **El Dorado Hills Community Revised B Alternative Map**. It represents the best available compromise that respects communities of interest in the largest population centers of El Dorado Hills and Cameron Park in El Dorado County. The El Dorado Hills Community Revised B Alternative B Draft Map meets each of the mapping factor priorities, and aligns with the desires of our various Communities of Interest:

1. **Geographic contiguity.**
2. **Geographic integrity of neighborhoods and local communities of interest.**
3. **Geographic integrity of cities or census-designated places.**
4. **Natural and artificial barriers, including streets and boundaries of the county when practicable.**
5. **Boundaries should be easily identifiable and understandable by residents, and bounded by natural and artificial barriers.**
6. **Geographical compactness.**

Thank you for supporting our communities.

Ron and Nora Trengove
3131 Collingswood Drive
El Dorado Hills, CA 95762
530-676-7292