

# Solid Waste Management Update

**June 2, 2009**

**Presented By: Gerri Silva, M.S., REHS  
Director, Environmental Management**



# Why We Are Here

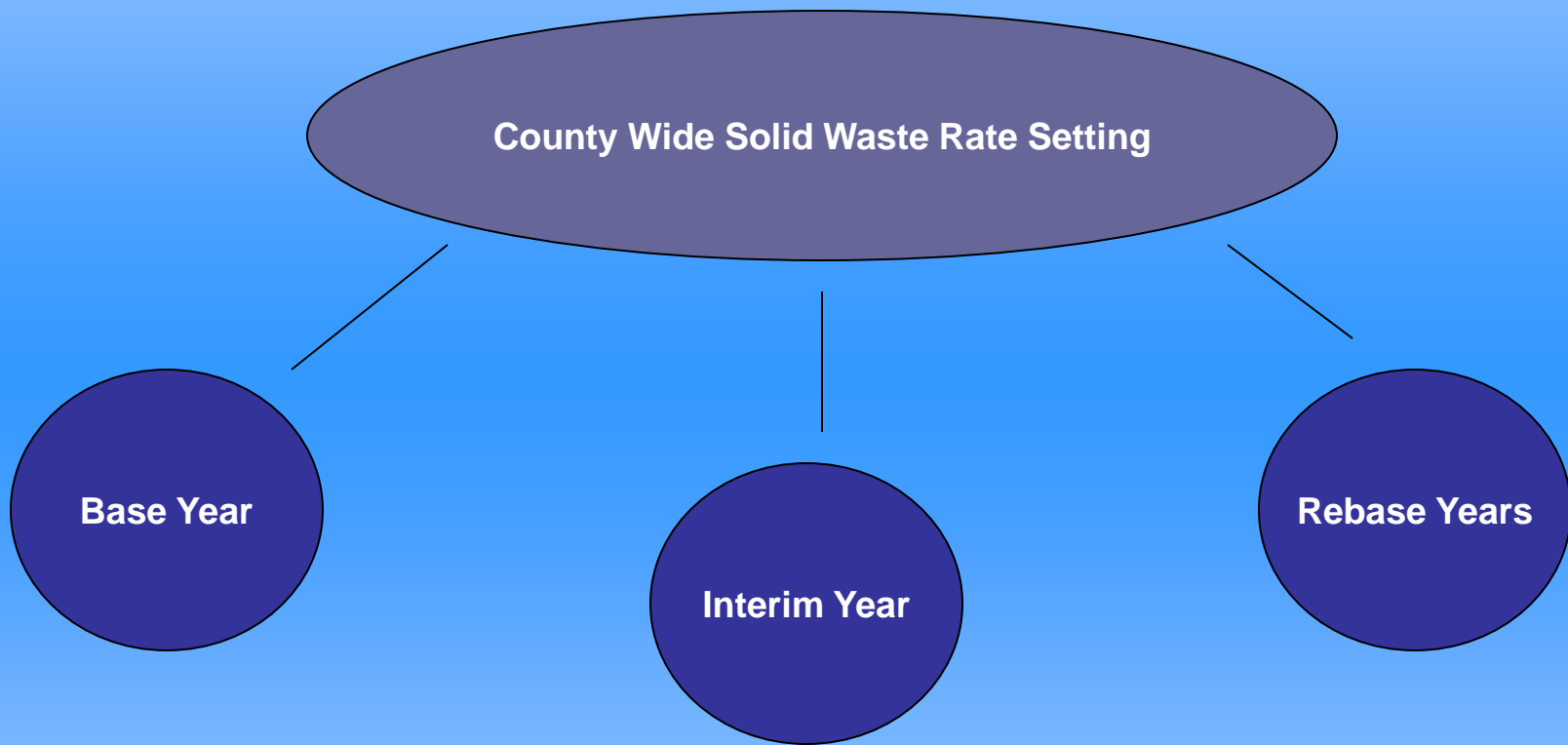
- March 16, 2009 Solid Waste Planning Workshop
  - Discussed future of solid waste planning for the County
  - Goal of the workshop was to bridge the current solid waste management system into an updated and sustainable waste management program that meets future needs of urban and rural population of County and future legislative mandates



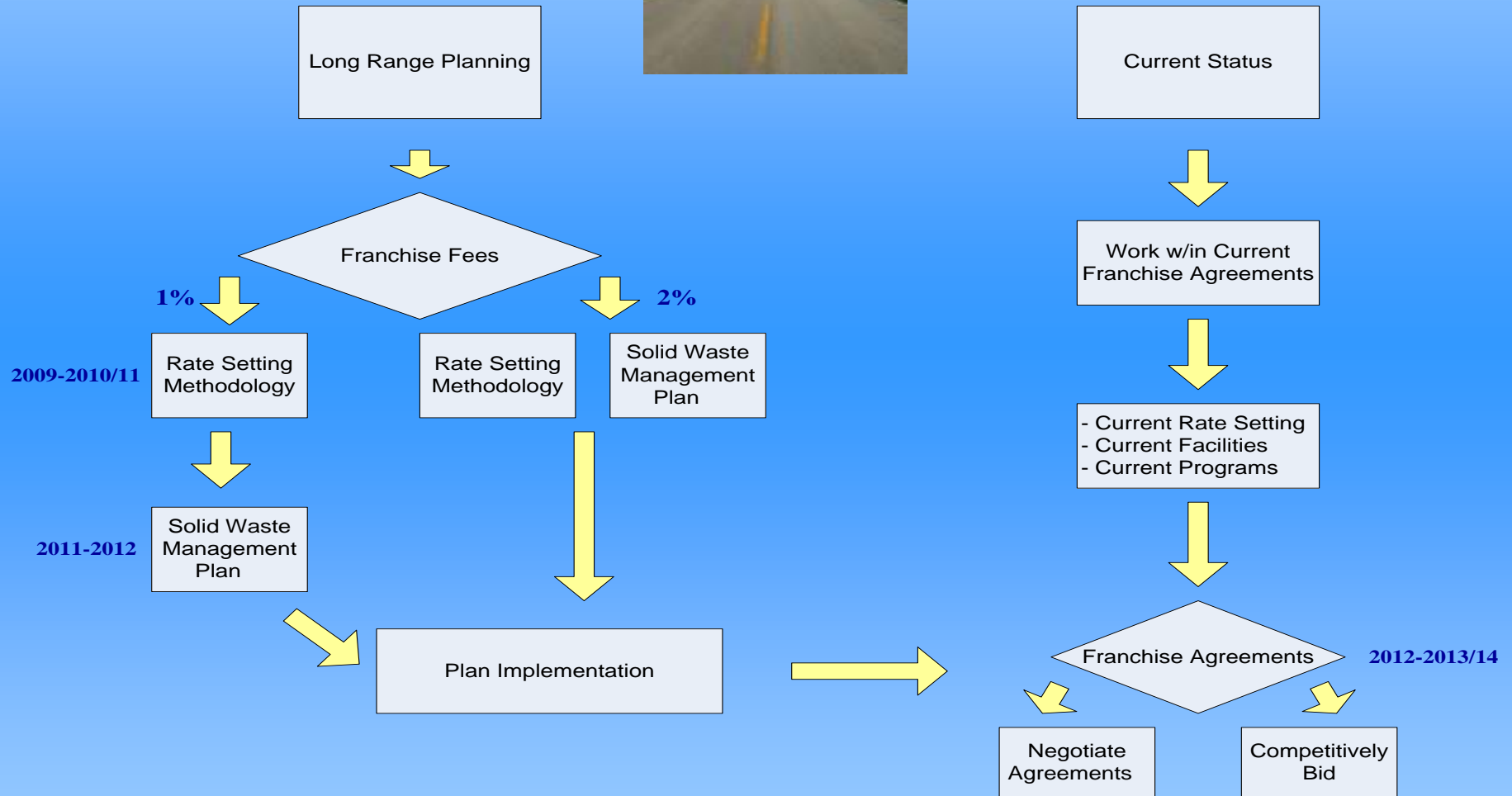
# Framework for a County Solid Waste Management Plan



# Solid Waste Rate Setting



# Original Proposed Fork in the Road



# March 16, 2009 Board Direction

## 1. Set a public hearing

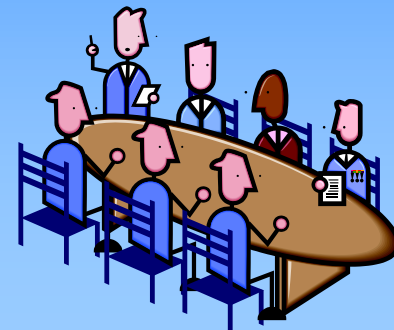
- Consider options to fund a Rate Setting Methodology Study and future County Solid Waste Planning
- Consider an increase, not to exceed 2%, in Solid Waste Franchise Fees to support the development and implementation
- Effective July 1, 2009

## 2. Establish a solid waste working committee

- Assist the County in researching and identifying a proactive approach for future county solid waste planning

## 3. Continue to work on county wide solid waste management planning including the establishment of a timeline

- Milestones and performance measures
- Periodic updates to the Board



# Funding Options

- **Agency Partners**
  - April 21, 2009 Board letter to Agency Partners:
    - **Cameron Park CSD**
      - May 21, 2009 meeting
        - » Considering monetary support
        - » Designated staff to the working group
    - **El Dorado Hills CSD**
      - May 27, 2009 meeting
        - » Considering monetary support
        - » Designated staff to the working group
    - **City of Placerville**
      - May 28, 2009 meeting
        - » No monetary support available
        - » Designated staff to the working group
    - **South Lake Tahoe Basin Waste Management Authority (JPA)**
      - April 30, 2009 meeting
        - » Considering monetary support up to \$42,000
        - » Solicit proposals for a scope-of-work as related to the Standardized Solid Waste Rate Setting Methodology Manual
        - » Designated staff member to the working group



# Funding Options Cont.

- **Franchise Haulers**

- Letters mailed to Franchisees
  - Expressed willingness to cooperate
  - Have not offered financial support



- **Environmental Management Department Budget**

- Savings in FY09/10 Solid Waste Program
  - \$50,000 over the next two fiscal years
  - A total of \$100,000





# Funding Options Cont.

- **Solid Waste Franchise Fees**
  - Franchise fees are paid by each franchise company to the County
  - The County currently has a franchise fee established at 5%
  - According to the NewPoint Study the average franchise fees for 14 comparable local jurisdictions ranged from 7% -10%
  - The NewPoint Study acknowledged that the County has the latitude to raise franchise fees to help fund needed solid waste management planning

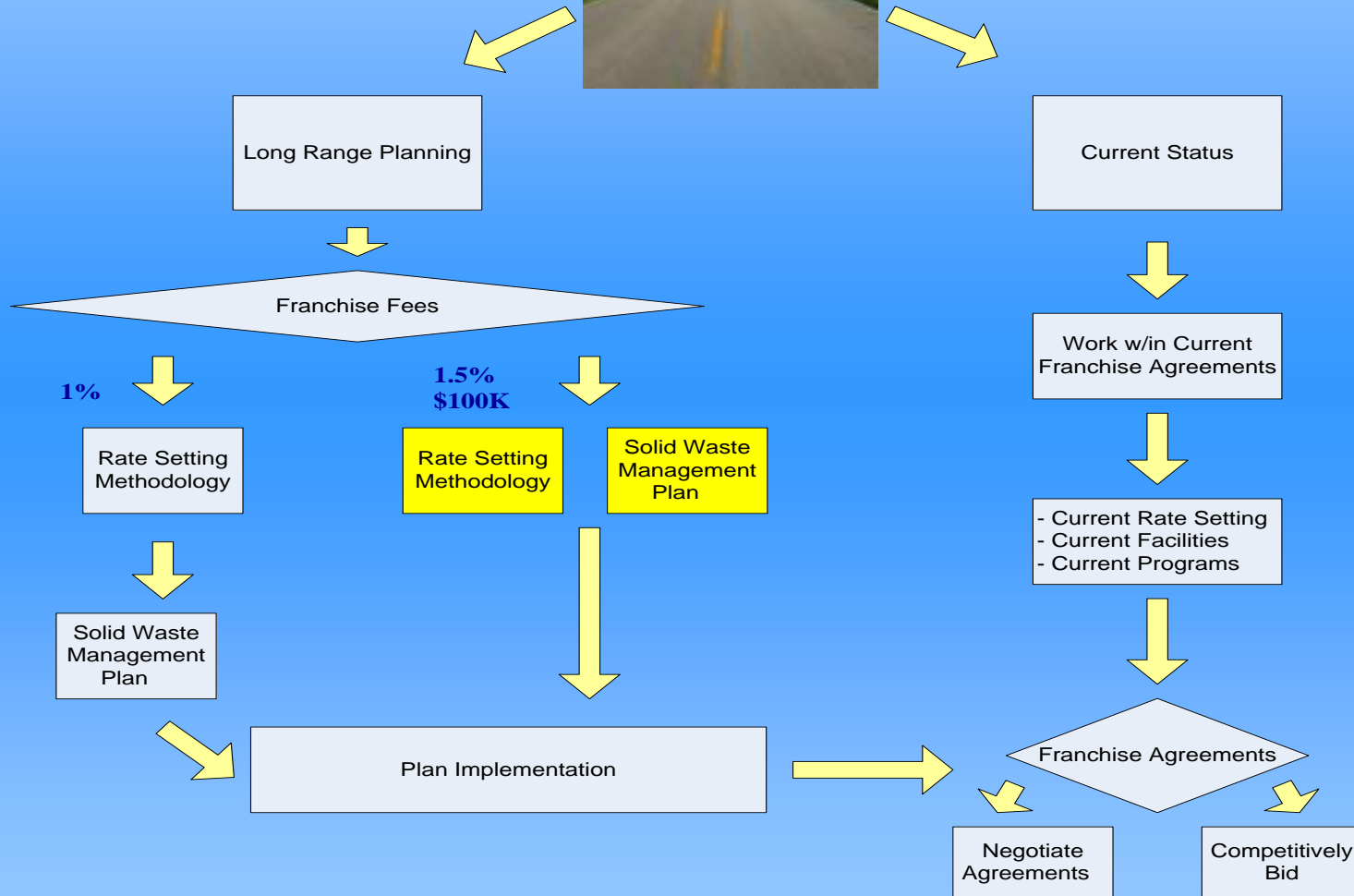


# Funding Options Cont.

- **Solid Waste Franchise Fee Increase**
  - EMD appropriated \$100,000
  - To fully fund the project a 1.5% franchise fee increase will be necessary
    - Equates to a monthly increase of 0.20¢-0.36¢ per rate payer
    - Equates to an annual increase of \$2.40-\$4.32 per rate payer



# Revised Fork in the Road Proposal



# Solid Waste Management Plan Funding Options

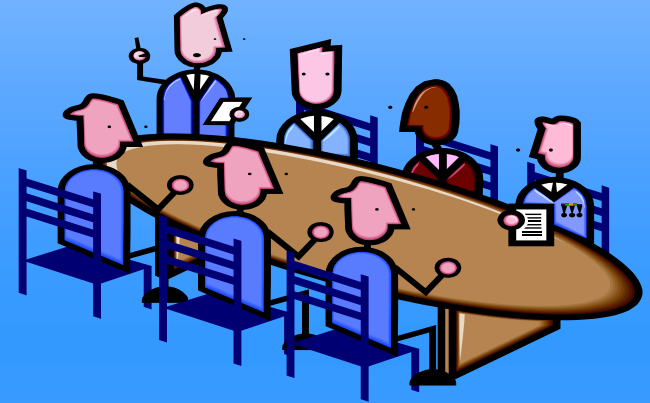
	Option 1	Option 2	Option 3
<b>Franchise Fee Increase</b>	1% 1% = \$100,000	1.50% 1.5% = \$150,000	\$0
<b>County Budget Contribution</b>	\$100,000* *\$50,000 over 2 Fiscal Years	\$100,000* *\$50,000 over 2 Fiscal Years	\$0
<b>Total Project Funding</b>	\$400,000 **	\$400,000***	\$0
<b>Timeline</b>	2 Years to Complete	1 Year to Complete	Current Status

\*\* Franchise Fees collected over a three fiscal year period

\*\*\* Franchise Fees collected over a two fiscal year period

# Solid Waste Committee

- **County Representatives**
  - Environmental Management
    - Gerri Silva and Greg Stanton
  - Chief Administrative Office
    - Mike Applegarth
  - Economic Development Advisory Committee
- **Local Agencies**
  - City of Placerville
    - Gary Pigg
  - City of South Lake Tahoe
    - Rick Angelocci
  - Cameron Park CSD
    - Richard Krek or Livia Amidon
  - El Dorado Hills CSD
    - Billy Vandegrift and Dianna Hillyer
  - South Lake Tahoe Joint Powers Authority
    - Cathe Pool
- **Business, Public, Advisory Committee**
  - DST Output
    - Bill Kohrummel
  - Snowline Hospice
    - Ravel Buckley
  - Office of Education
    - Dr. Barber or her designee
  - Community Member
    - Laurel Stroud and Judy Mathat
  - El Dorado Solid Waste Advisory Committee
    - George Turnboo and Dixon Schwarzbach



# Conceptual Timeline - Funding Option 2

## Solid Waste Management Planning

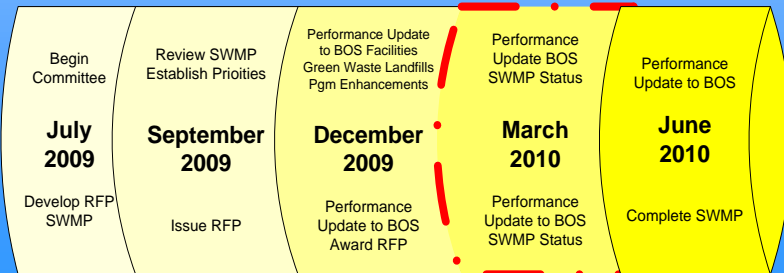
Phase I - Planning

Phase II - Implementation

### Solid Waste Management Plan

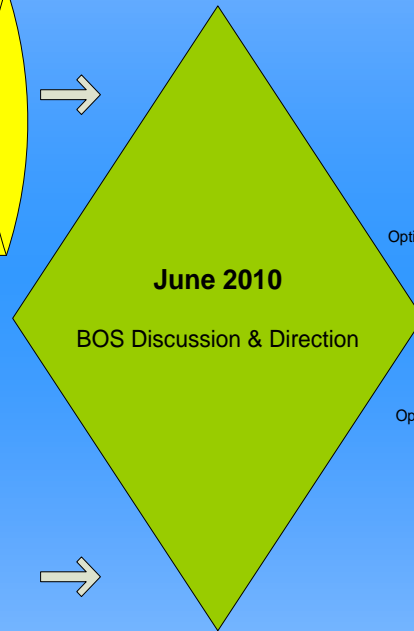
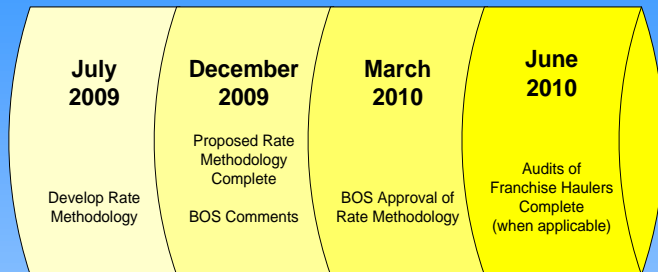
### Negotiate w/ Current Franchise Haulers\*

#### Solid Waste Working Committee



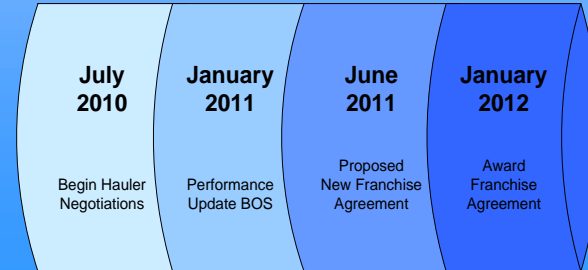
#### Contract for Services\*\*

### Standardized Rate Setting Methodology\*\*



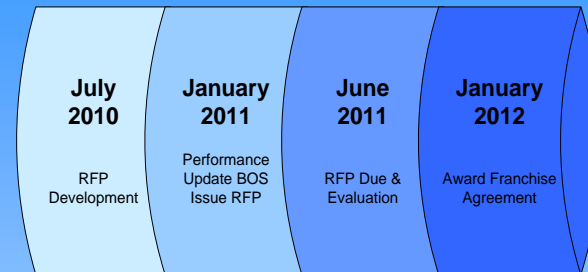
Option A

Option B



\*Applicable to Franchise Agreements that expire in 2012

### Request for Proposal Solid Waste Services



\*\* Funding Contingent

The proposed Solid Waste Management Planning Timeline above represents a very complex process. The conceptual timeline is a "best case" scenario dependent upon the successful coordination of multiple variables including the availability of adequate funding, RFP responses, negotiations with solid waste franchisees, and direction provided by the Board of Supervisors.

# Environmental Management Recommendation

1. To expedite the dual tracking of the Solid Waste Management Planning and Standardized Rate Setting Methodology in an efficient timeframe Environmental Management has identified Option 2 as the recommended funding option.
  - A) Adopt Resolution increasing the Solid Waste Franchise Fees by 1.5% to fund a Rate Setting Methodology Study and future County Solid Waste Management Planning.
  - B) Direct Environmental Management to appropriate \$50,000 annually over the next two fiscal years to assist with funding of the Solid Waste Management Plan and Standardized Rate Setting Methodology.
2. Approve the proposed conceptual solid waste working committee membership and project timeline.
3. Direct Environmental Management to continue work on countywide solid waste management planning pursuant to the direction given concerning the funding mechanism options. Additionally, direct the Department to continue to provide periodic updates and performance measurements to the Board as necessary.

# Board Discussion and Questions





# Project Cost and Financing Summary

- **Original funding identified at \$150,000 - \$200,000 for the Solid Waste Management Plan**
  - Solid Waste Working Committee
  - Professional and Technical Services
  - Anticipated that cost of professional service to be about \$150,000
- **Original funding identified at \$200,000 for the Rate Setting Methodology**
  - Anticipated that cost could be reduced given the timing and need of financial audits for each hauler
- **Will continue to identify other potential funding opportunities**
- ***If project is not funded by an increase in Solid Waste Franchise Fees:***
  - EMD will work with the committee
  - Standardized rate setting methodology and franchise audits may not be completed
  - Rate Setting will be conducted within current guidelines of the Franchise Agreements