



STOP SIGN/CROSSWALK SURVEY

Blackstone Parkway (No. 2797)

at County Road No. 2802 at the Valley View Sports Park and
Valley View Elementary School

Reviewed by the Traffic Advisory Committee on JUN 24 2015

COMMITTEE APPROVED STAFF'S RECOMMENDATION.

COMMITTEE REQUESTED FURTHER ACTION.

Action: APPROVED

**TRANSPORTATION DIVISION
ENGINEERING AND TRAFFIC SURVEY**

Location: Blackstone Parkway (No. 2797) at County Road No. 2802 at the Valley View Sports Park and Valley View Elementary School

Subject: Stop Sign and Crosswalk Survey

Date: April 30, 2015

REQUEST REFERENCE:

This study was undertaken by the Transportation Division of El Dorado County in response to a signed petition (see attached cover letter) by 54 residents of the Blackstone Subdivision requesting an “ALL-WAY STOP” and crosswalk be placed on Blackstone Parkway at the County Road # 2802 intersection. The purpose of this study is to determine if an “ALL-WAY STOP” and crosswalk at the Blackstone Parkway / County Road # 2802 intersection at MP 1.50 is warranted and would enhance traffic and pedestrian safety at this location.

This study is limited to Blackstone Parkway in the immediate vicinity of its intersection with County Road # 2802. All subsequent references apply only to this area unless otherwise indicated.

GENERAL PHYSICAL CONDITIONS:

Blackstone Parkway exhibits the following characteristics:

<i>Functional Classification:</i>	<i>Local Roadway</i>
<i>Limits:</i>	<i>200 feet east/west of County Road # 2802</i>
<i>Alignment:</i>	<i>Curvilinear</i>
<i>Grade:</i>	<i>Level</i>
<i>Surface:</i>	<i>Two (2) lane divided asphalt surface roadway with left turn lanes at the access intersection</i>
<i>Striping:</i>	<i>Yellow centerline striping, and white edge line stripe</i>
<i>Shoulders/Frontage:</i>	<i>Class II Bike Lanes, curb, gutter; and sidewalk on south side of Blackstone Parkway</i>

Blackstone Parkway was accepted into the County Maintained Roadway System in 2010 and County Road # 2802 was accepted into the County Maintained Roadway System in 2015. Blackstone Parkway is a two (2) – lane divided asphalt concrete roadway, in good condition, with a left turn pocket for the eastbound lane at the County Road # 2802 intersection. The pavement is approximately 36 feet in width with six (6) foot wide Class II bike lanes with a sidewalk along the south side of Blackstone Parkway. Currently, ADA Curb ramps are present at the N & SE corner and the SW corner of the Blackstone Parkway/ County Road # 2802 intersection. Pavement markings

consist of yellow centerline striping, and white edge line striping. A “STOP” legend, limit line, and centerline currently exists on County Road # 2802 at this intersection. Blackstone Parkway is classified as a local roadway by the Federal Highway Administration (FHWA), as depicted by the California Road System (CRS) maps. However, this roadway functions as collector roadway for the adjoining subdivisions as well as the park and school.

The Valley View Sports Park was completed in March of 2015 and is currently open and recreational events are scheduled for every day of the week. The Valley View Elementary School is currently not open at this time and it is still uncertain whether the School will open their doors in the fall of 2015. This is primarily due to the recent downturn in residential development as well as recent trends of classroom student reductions. The school site is currently being used by the Buckeye Union School District administration office and the school gymnasium is currently being used for recreational activities by the El Dorado Hills Community Services District during the weekdays only. Before the School does open, the Transportation Division will install the appropriate school zone signage on the adjoining County roadways.

RECORD DATA:

Traffic counts were conducted by El Dorado County Transportation Division in March of 2015, on Blackstone Parkway (see attached count summary). The following counts were recorded:

<i>DATE</i>	<i>MILEPOST</i>	<i>SITE</i>	<i>ADT</i>
<i>March 2015</i>	<i>1.46</i>	<i>West of Valley View School</i>	<i>2,332</i>
<i>March 2015</i>	<i>1.54</i>	<i>East of Valley View School</i>	<i>1,676</i>
<i>AVERAGE DAILY TRAFFIC VOLUME</i>			<i>2,004</i>

A review of the accident data provided by the California Highway Patrol for a three (3) year period from January 1, 2012, through December 31, 2014, disclosed that there has been one (1) accident reported on Blackstone Parkway during that period, which is as follows:

1 Reported Accident in 2013 resulting in no Injuries and no Fatalities

The one (1) reported accident, during the three (3) year period, could be summarized as follows:

<i>Summary of accident data for Blackstone Parkway from 1/1/12 to 12/31/14</i>	
<i>Accident Rate</i>	<i>0.25 Accidents per Million Vehicle Miles</i>
<i>Number of Reported Accidents</i>	<i>1 - Rear End Accident</i>
<i>Average Daily Traffic Volume</i>	<i>2,004 Vehicles</i>

This rate of 0.25 Accidents per Million Vehicle Miles (Acc./MVM) is lower than the countywide average rate of 1.70 Acc./MVM normally experienced along similar roadways.

The Manual on Uniform Traffic Control Devices, in Section 2B.07 Multiway Stop Applications, states in part:

Multi-way stop control can be useful as a safety measure at intersections if certain traffic conditions exist. Safety concerns associated with multi-way stops include pedestrians, bicyclists, and all road users expecting other road users to stop. Multi-way stop control is used where the volume of traffic on the intersecting roads is approximately equal.

The restrictions on the use of STOP signs described in Section 2B.07 also apply to multi-way stop applications.

Guidance:

The decision to install multi-way stop control should be based on an engineering study.

The following criteria should be considered in the engineering study for a multi-way STOP sign installation:

A. Where traffic control signals are justified, the multi-way stop is an interim measure that can be installed quickly to control traffic while arrangements are being made for the installation of the traffic control signal.

B. Five or more reported crashes in a 12-month period that are susceptible to correction by a multi-way stop installation. Such crashes include right-turn and left-turn collisions as well as right-angle collisions.

C. Minimum volumes:

1. The vehicular volume entering the intersection from the major street approaches (total of both approaches) averages at least 300 vehicles per hour for any 8 hours of an average day; and

2. The combined vehicular, pedestrian, and bicycle volume entering the intersection from the minor street approaches (total of both approaches) averages at least 200 units per hour for the same 8 hours, with an average delay to minor-street vehicular traffic of at least 30 seconds per vehicle during the highest hour; but

3. If the 85th-percentile approach speed of the major-street traffic exceeds 40 mph, the minimum vehicular volume warrants are 70 percent of the values provided in Items 1 and 2.

D. Where no single criterion is satisfied, but where Criteria B, C.1, and C.2 are all satisfied to 80 percent of the minimum values. Criterion C.3 is excluded from this condition.

The Manual on Uniform Traffic Control Devices states further:

Option:

Other criteria that may be considered in an engineering study include:

A. The need to control left-turn conflicts;

B. The need to control vehicle/pedestrian conflicts near locations that generate high pedestrian volumes;

C. Locations where a road user, after stopping, cannot see conflicting traffic and is not able to negotiate the intersection unless conflicting cross traffic is also required to stop; and

D. An intersection of two residential neighborhood collector (through) streets of similar design and

operating characteristics where multi-way stop control would improve traffic operational characteristics of the intersection.

Section 21949(a) & (b) of the California Vehicle Code states the following:

CVC 21949.

(a) The Legislature hereby finds and declares that it is the policy of the State of California that safe and convenient pedestrian travel and access, whether by foot, wheelchair, walker, or stroller, be provided to the residents of the state.

(b) In accordance with the policy declared under subdivision (a), it is the intent of the Legislature that all levels of government in the state, particularly the Department of Transportation, work to provide convenient and safe passage for pedestrians on and across all streets and highways, increase levels of walking and pedestrian travel, and reduce pedestrian fatalities and injuries.

The American Association of State Highway and Transportation Officials (AASHTO) Guide for the Planning, Design, and Operation of Pedestrian Facilities (July 2004) outlines several types of crossing treatments and traffic control devices are available and appropriate for school zones and along school walking routes which includes:

- Marked crosswalks where appropriate at intersections and midblock locations
- Stop-controlled crosswalks
- Full accessibility for all pedestrians
- Crossing islands at intersections

FIELD REVIEW AND OBSERVATION:

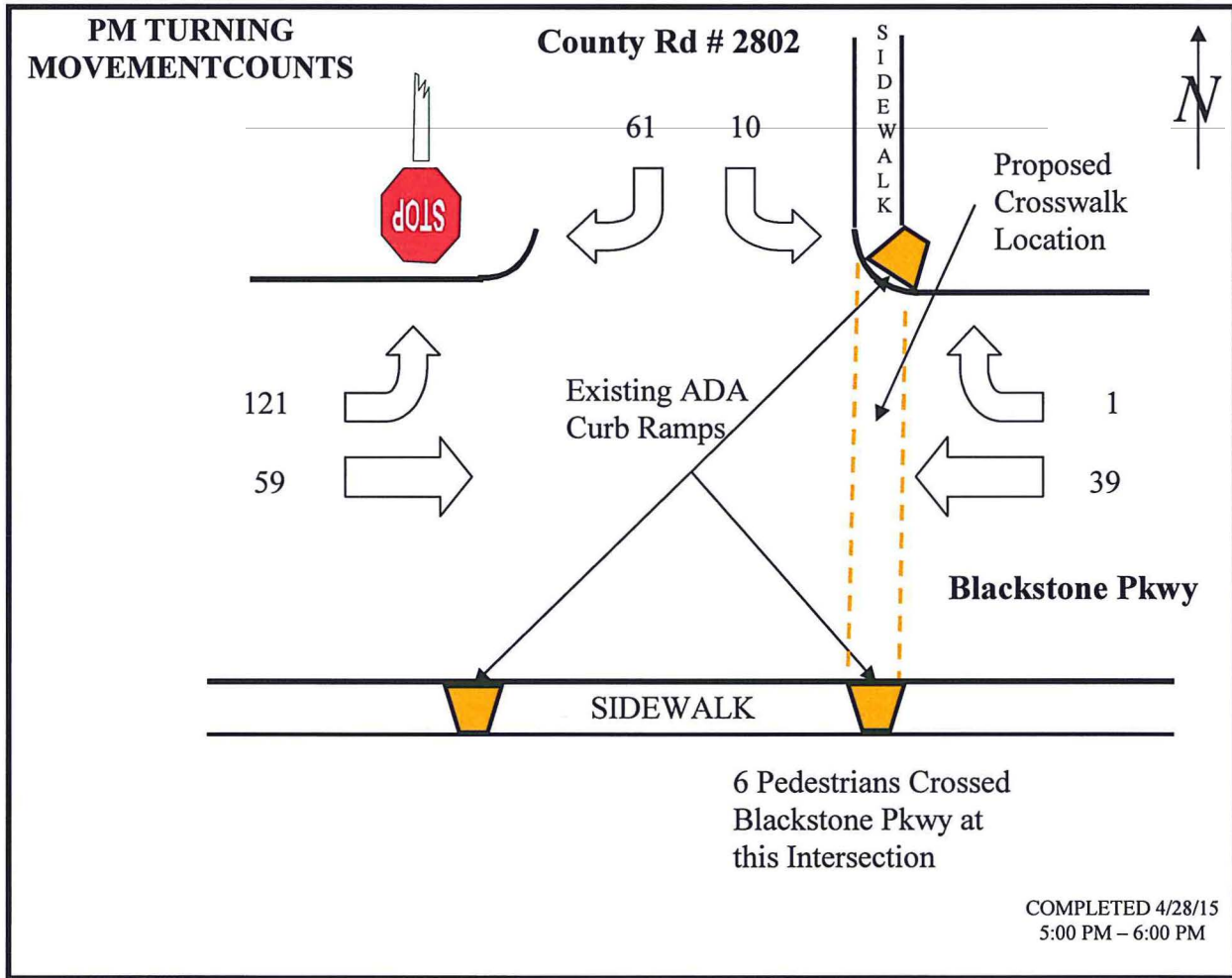
SPEED SURVEY:

A radar speed survey was completed by the El Dorado County Transportation Division on April 21, 2015, on Blackstone Parkway near this intersection (see attached sheet). The following was recorded:

<u>2015 SITE LOCATION</u>	<u>MILE POST</u>	<u>SPEED LIMIT</u>	<u>85% SPEED</u>	<u>10 MPH PACE</u>	<u>% IN PACE SPEED</u>
Blackstone Parkway	1.50	N/A	43 MPH	31 – 40 MPH	69.7 %

EXISTING AND FUTURE TRAFFIC MOVEMENTS:

Traffic movement observations at this intersection revealed the following PM turning movements on each of the intersecting legs as follows:



No significant traffic delay or backup of vehicles was observed at each leg of this intersection during the preparation of this study. Traffic delay or backup could increase somewhat if an “ALL-WAY STOP” and crosswalk were installed on Blackstone Parkway at this intersection during AM and PM Peak Hours. Six (6) pedestrians crossed Blackstone Parkway at this intersection to access the recreational activities at the park and the school. Furthermore, pedestrian traffic will most certainly increase with the school opening and with the adjoining Blackstone Subdivision continuing to develop with an approximate build out of 826 homes with an estimated 5,841 trips per day on Blackstone Parkway, east of County Road # 2802, according to the County’s Long Range Planning Model.

The Valley View Sports Park was completed in the spring of 2015 and is currently open. It is still uncertain whether the Valley View Elementary School will open their doors this fall. What is certain, according to the Buckeye School District Office, is that when the school opens, it will commence with a limited enrollment, not to exceed 250 children. The remaining enrollment will be phased in over a

May 2015

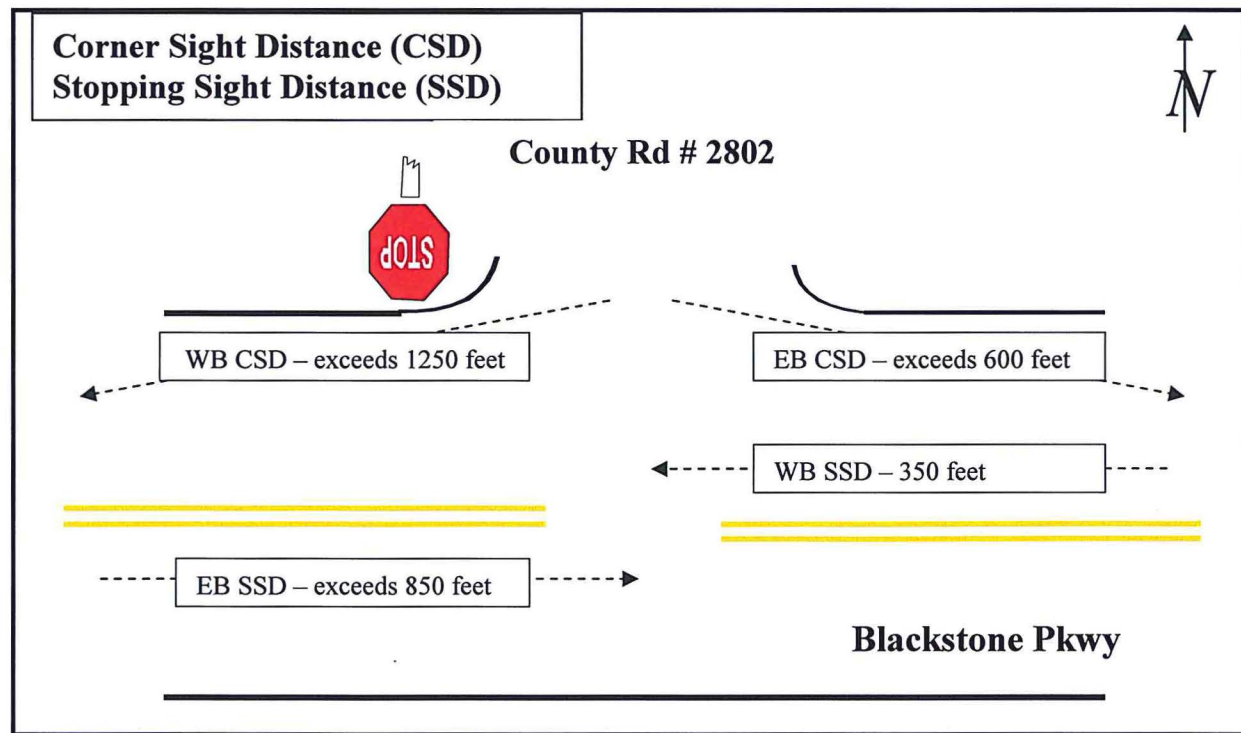
Engineering and Traffic Survey for Blackstone Parkway

Page 6 of 9

five (5) year period, not to exceed 700 children. A total of 88 children currently reside in the Blackstone Subdivision who are enrolled in other Elementary schools in the Buckeye District and the Blackstone Subdivision is approximately 40 % developed at this time.

SIGHT DISTANCE:

Corner sight distance (CSD) and Stopping sight distance (SSD) measurements were taken at the intersection of Blackstone Parkway and County Road # 2802. The following sight distance measurements were recorded:



The minimum corner sight distance (CSD) and stopping sight distance (SSD) are based on the 85th percentile speed of 43MPH for Blackstone Parkway and as required by the *California Highway Design Manual*. The minimum CSD needed for County Road # 2802 is 473 feet. The minimum SSD needed for Blackstone Parkway at County Road # 2802 is 344 feet. As shown in the exhibit above, the existing CSD and SSD at this intersection exceed the minimum requirements for CSD and SSD as specified by the *California Highway Design Manual*, except for the WB SSD of 350 feet, which minimally meets the required 344 feet of SSD.

CONTACTS:

- Ray Boike - Buckeye Union School District
- Greg Bundesen – Blackstone Subdivision HOA
- Tamara Hollars – Blackstone Subdivision Resident
- Natalie Porter, P.E., T.E. – Long Range Planning Unit – Future Traffic Count Modeling for Blackstone Pkwy

FINDINGS AND CONCLUSIONS:

Blackstone Parkway has been found to have the following:

- Average 85th percentile speeds of 43 miles per hour.
- The calculated average daily traffic volume was 2,004 ADT vehicles per day for Blackstone Parkway with a total build-out estimate of 5,841 ADT.
- A total of one (1) accident reported on Blackstone Parkway for the three (3) year period from January, 2012, through December, 2014.
- The existing corner sight distance (CSD) and stopping sight distance (SSD) at this intersection exceed the minimum requirements for CSD and SSD as specified by the *California Highway Design Manual*, except for the WB SSD of 350 feet, which minimally meets the required 344 feet of SSD.
- The Valley View Elementary School is not currently open may accommodate a maximum of 700 students over a five (5) year period.

DISCUSSION:

No traffic volume warrants were met on Blackstone Parkway or County Road # 2082, as specified by the *Manual on Uniform Traffic Control Devices*, to justify the placement of an “ALL-WAY STOP” at this intersection. However, pedestrian traffic has currently been observed crossing this portion of Blackstone Parkway in this vicinity to access the Valley View Sports Park as well as the recreational activities that occur at the Valley View Elementary School Gymnasium. Furthermore, pedestrian traffic will most certainly increase with the school opening and with the adjoining Blackstone Subdivision continuing to develop. Furthermore, if a crosswalk is installed at this intersection, it should be installed along the eastern side of this intersection where ADA curb ramps and sidewalks are currently present on each side of Blackstone Parkway.

No significant traffic delay or backup of vehicles was observed at each leg of this intersection during the preparation of this study. Traffic delay or backup could increase somewhat if an “ALL-WAY STOP” and crosswalk were installed on Blackstone Parkway at this intersection during AM and PM School Peak Hours.

Section 2B.07 of the Manual on Uniform Traffic Control Devices states in part the following in considering a multi-way stop:

A. The need to control left-turn conflicts;

B. The need to control vehicle/pedestrian conflicts near locations that generate high pedestrian volumes;

Due to the existing and projected vehicular and pedestrian traffic accessing at this uncontrolled intersection, it can be concluded that placing an “All-Way Stop” and crosswalk at the County Road # 1802 intersection is justified at the Blackstone Parkway intersection. The placement of an “All-Way Stop” and crosswalk will provide a controlled intersection and will help minimize any left turn conflicts due to marginal SSD for WB traffic on Blackstone Parkway in addition to minimizing

vehicular and pedestrian conflicts with providing a controlled access of pedestrians crossing Blackstone Parkway at the County Road #2802 intersection. The County would not recommend the installation of an uncontrolled mid-block crosswalk at this location if the proposed "All-Way Stop" was denied by the TAC.

RECOMMENDATION

Based on the findings of this investigation, it is recommended that:

1. The Traffic Advisory Committee approve the installation of "STOP" signs and associated striping and legends stopping eastbound and westbound traffic on Blackstone Parkway at its intersection with County Road # 2802 and install a crosswalk at the eastern leg of this intersection on Blackstone Parkway.

Prepared By: Jon T. Vegna
Jon T. Vegna
Senior Engineering Technician

Approved By: Darryl L. Brown On 5/11/15
Darryl L. Brown, P.E.
Traffic Superintendent
Date

Approved By: Bard R. Lower On 5/13/15
Bard R. Lower, Director
Transportation Division
Community Development Agency
Date

Attachments:

- Vicinity Map (1)
- Vicinity Photos (3)
- Traffic Volume Counts (4)
- Accident Summary (2)
- Speed Survey (1)
- Petition Cover Letter (1)

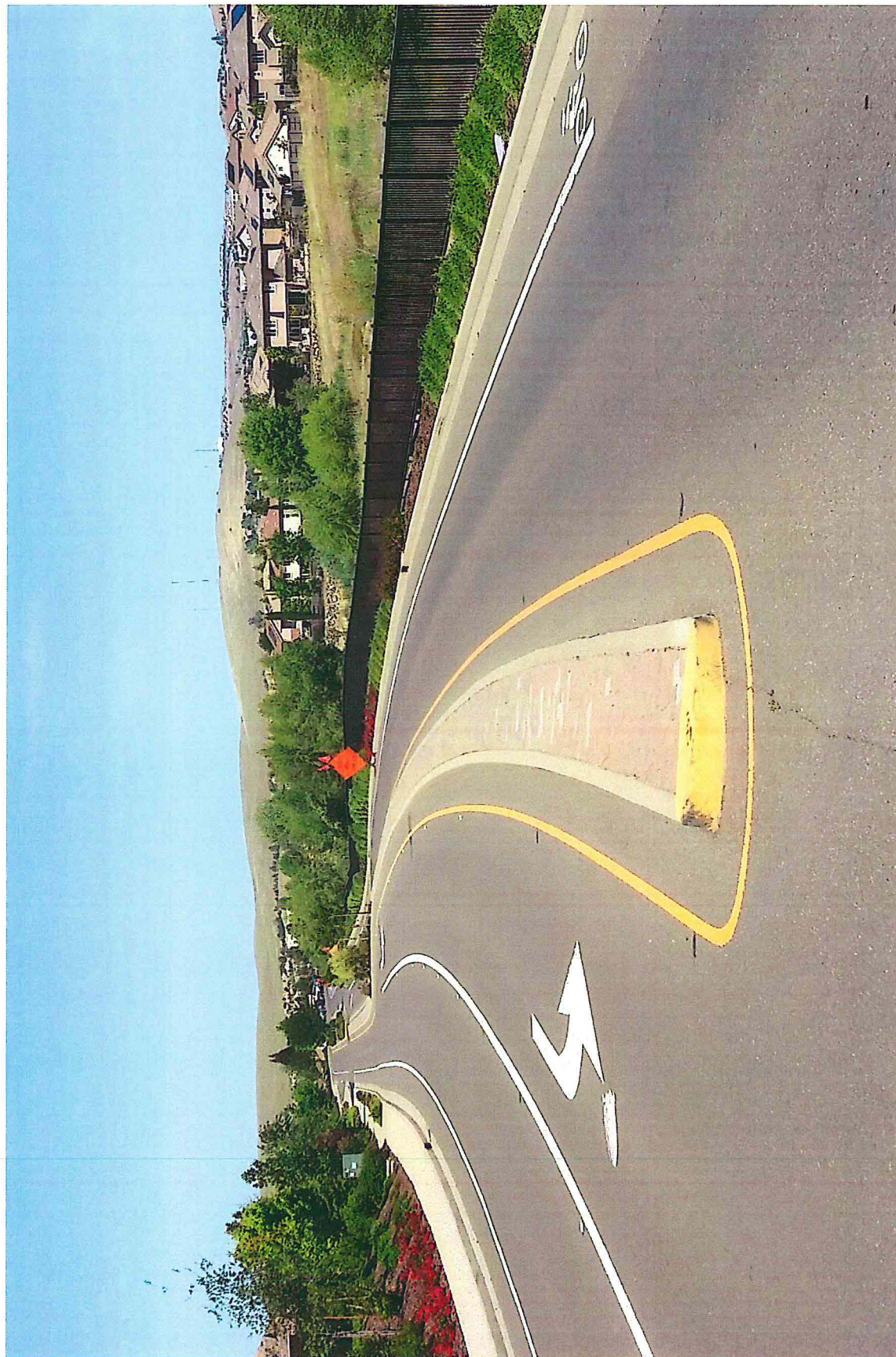
Vicinity Map
ETS - Proposed "ALL WAY STOP"
and Crosswalk
Blackstone Parkway @
County Road # 2802



Blackstone Parkway @
County Road # 2802

500 250 0 500 Feet

Blackstone Parkway, West of County Road # 2802



Blackstone Parkway, East of County Road # 2802



County Road # 2802, at Blackstone Parkway



**EL DORADO COUNTY
COMMUNITY DEVELOPMENT AGENCY: TRANSPORTATION DIVISION**

Count Summary Beginning: March 20, 2015

Count Station:	Special	Counter ID:	51
City/Town:	El Dorado Hills	Mile Post:	
Road Name:	Blackstone Pkwy.	Location:	West of new school
Lanes:	2	Direction:	EASTBOUND

Date	22	23	24	25	26	20	21	Weekly	Wk Day
Day	Sun	Mon	Tue	Wed	Thu	Fri	Sat	Average	Avg.
Time									
100	1	1	3	1	2	3	7	3	2
200	1	1	0	1	1	0	2	1	1
300	1	0	0	0	1	0	1	0	0
400	0	0	0	0	2	0	1	0	0
500	0	0	0	0	0	0	0	0	0
600	1	4	3	5	2	6	0	3	4
700	0	60	82	76	84	82	15	57	77
800	6	99	114	122	108	105	29	83	110
900	16	74	113	76	101	93	77	79	91
1000	24	56	72	70	58	70	59	58	65
1100	30	76	62	63	75	74	66	64	70
1200	38	56	64	68	64	78	82	64	66
1300	56	55	72	72	99	70	53	68	74
1400	56	67	41	58	66	68	78	62	60
1500	48	52	61	55	50	68	65	57	57
1600	58	100	84	116	80	85	78	86	93
1700	41	104	118	114	140	70	72	94	109
1800	27	158	144	141	155	87	37	107	137
1900	32	82	62	74	96	52	35	62	73
2000	13	48	51	41	63	34	21	39	47
2100	7	22	17	19	20	17	16	17	19
2200	14	6	12	20	18	18	17	15	15
2300	4	6	5	4	8	11	15	8	7
2400	1	1	3	2	6	5	9	4	3
Totals	475	1128	1183	1198	1299	1096	835	1031	1181
AM Peak Hr	12:00	8:00	8:00	8:00	8:00	8:00	12:00	8:00	8:00
AM Count	38	99	114	122	108	105	82	83	110
PM Peak Hr	4:00	6:00	6:00	6:00	6:00	6:00	2:00	6:00	6:00
PM Count	58	158	144	141	155	87	78	107	137

TOTAL ADT: 2,332

**EL DORADO COUNTY
COMMUNITY DEVELOPMENT AGENCY: TRANSPORTATION DIVISION**

Count Summary Beginning: March 20, 2015

Count Station:	Special	Counter ID:	51
City/Town:	El Dorado Hills	Mile Post:	
Road Name:	Blackstone Pkwy.	Location:	West of new school
Lanes:	2	Direction:	WESTBOUND

Date	22	23	24	25	26	20	21	Weekly	Wk Day
Day	Sun	Mon	Tue	Wed	Thu	Fri	Sat	Average	Avg.
Time									
100	2	2	1	1	1	1	1	1	1
200	0	0	1	0	0	1	0	0	0
300	0	0	0	0	0	0	1	0	0
400	0	0	0	0	2	0	0	0	0
500	0	1	4	2	3	1	0	2	2
600	3	5	8	7	7	8	1	6	7
700	4	26	27	21	29	22	5	19	25
800	6	64	56	72	54	52	18	46	60
900	23	41	59	60	50	50	38	46	52
1000	30	54	64	58	46	54	42	50	55
1100	36	70	83	80	92	69	78	73	79
1200	32	58	86	68	78	88	110	74	76
1300	42	58	86	68	71	81	52	65	73
1400	50	74	58	58	70	66	62	63	65
1500	42	60	76	88	91	86	80	75	80
1600	60	120	118	127	132	142	74	110	128
1700	50	97	89	92	104	94	95	89	95
1800	32	140	108	100	123	102	57	95	115
1900	28	93	104	90	112	54	70	79	91
2000	15	110	116	138	154	55	28	88	115
2100	13	24	18	20	26	17	7	18	21
2200	4	6	3	13	10	10	11	8	8
2300	4	1	0	0	2	6	14	4	2
2400	0	0	0	0	0	5	2	1	1
Totals	476	1104	1165	1163	1257	1064	846	1011	1151
AM Peak Hr	11:00	11:00	12:00	11:00	11:00	12:00	12:00	12:00	11:00
AM Count	36	70	86	80	92	88	110	74	79
PM Peak Hr	4:00	6:00	4:00	8:00	8:00	4:00	5:00	4:00	4:00
PM Count	60	140	118	138	154	142	95	110	128

TOTAL ADT: 2,332

**EL DORADO COUNTY
COMMUNITY DEVELOPMENT AGENCY: TRANSPORTATION DIVISION**

Count Summary Beginning: March 20, 2015

Count Station:	Special	Counter ID:	66
City/Town:	El Dorado Hills	Mile Post:	
Road Name:	Blackstone Pkwy.	Location:	East of New School
Lanes:	2	Direction:	EASTBOUND

Date	22	23	24	25	26	20	21	Weekly	Wk Day
Day	Sun	Mon	Tue	Wed	Thu	Fri	Sat	Average	Avg.
Time									
100	1	1	3	1	2	3	6	2	2
200	1	1	0	1	1	0	2	1	1
300	1	0	0	0	1	0	1	0	0
400	0	0	0	0	2	0	1	0	0
500	0	0	0	0	0	0	0	0	0
600	1	4	2	4	2	5	0	3	3
700	0	50	80	76	80	80	15	54	73
800	4	103	108	112	101	102	23	79	105
900	12	70	97	72	84	89	22	64	82
1000	17	55	72	65	52	62	36	51	61
1100	24	68	58	58	70	70	44	56	65
1200	33	50	60	66	54	81	50	56	62
1300	39	54	63	67	74	67	50	59	65
1400	47	61	45	54	66	63	40	54	58
1500	45	52	59	49	45	64	51	52	54
1600	50	38	44	64	46	64	58	52	51
1700	37	41	37	38	49	44	36	40	42
1800	25	35	43	42	40	48	30	38	42
1900	26	32	33	35	41	34	32	33	35
2000	12	26	27	25	39	26	17	25	29
2100	6	22	18	15	16	15	15	15	17
2200	13	5	12	20	18	17	17	15	14
2300	4	6	5	4	9	11	14	8	7
2400	1	1	3	2	6	5	8	4	3
Totals	399	775	869	870	898	950	568	761	872
AM Peak Hr	12:00	8:00	8:00	8:00	8:00	8:00	12:00	8:00	8:00
AM Count	33	103	108	112	101	102	50	79	105
PM Peak Hr	4:00	2:00	1:00	1:00	1:00	1:00	4:00	1:00	1:00
PM Count	50	61	63	67	74	67	58	59	65

TOTAL ADT: 1,676

**EL DORADO COUNTY
COMMUNITY DEVELOPMENT AGENCY: TRANSPORTATION DIVISION**

Count Summary Beginning: March 20, 2015

Count Station:	Special	Counter ID:	66
City/Town:	El Dorado Hills	Mile Post:	
Road Name:	Blackstone Pkwy.	Location:	East of New School
Lanes:	2	Direction:	WESTBOUND

Date	22	23	24	25	26	20	21	Weekly	Wk Day
Day	Sun	Mon	Tue	Wed	Thu	Fri	Sat	Average	Avg.
Time									
100	2	2	0	1	1	1	0	1	1
200	0	0	2	0	0	1	0	0	1
300	0	0	0	0	0	0	1	0	0
400	0	0	0	0	2	0	0	0	0
500	0	1	3	2	3	1	0	1	2
600	3	5	8	7	7	8	1	6	7
700	4	22	25	20	26	20	5	17	23
800	5	56	54	62	49	48	18	42	54
900	20	34	52	56	44	45	24	39	46
1000	27	53	59	47	40	46	27	43	49
1100	25	60	66	65	81	64	42	58	67
1200	25	53	74	60	60	80	52	58	65
1300	33	58	79	64	62	72	46	59	67
1400	31	68	54	52	60	59	34	51	59
1500	30	56	64	83	76	80	42	62	72
1600	50	98	102	106	99	124	63	92	106
1700	45	64	52	58	64	76	50	58	63
1800	22	36	51	37	47	54	45	42	45
1900	21	29	34	41	42	27	28	32	35
2000	14	22	13	30	27	29	17	22	24
2100	11	12	8	6	14	8	6	9	10
2200	3	5	3	10	9	10	12	7	7
2300	4	1	0	0	2	5	11	3	2
2400	0	0	0	0	0	4	1	1	1
Totals	375	735	803	807	815	862	525	703	804
AM Peak Hr	10:00	11:00	12:00	11:00	11:00	12:00	12:00	12:00	11:00
AM Count	27	60	74	65	81	80	52	58	67
PM Peak Hr	4:00	4:00	4:00	4:00	4:00	4:00	4:00	4:00	4:00
PM Count	50	98	102	106	99	124	63	92	106

TOTAL ADT: 1,676

**EL DORADO COUNTY
DEPARTMENT OF TRANSPORTATION
ACCIDENT SITE ANALYSIS SUMMARY FOR
BLACKSTONE PW
ENTIRE LENGTH**

Report Date: 4/27/2015

For the period beginning January 1, 2012 and ending December 31, 2014

Beginning at Mile Post	0.00	and Ending at Mile Post	1.84	Roadway Section Length =	1.84		
<hr/>							
2013	Number of Accidents:	1	Number of Injuries:	0	Number of Fatalities:	0	
<hr/>							
Three Year Accident Total =		1	Three Year Injury Total =		0	Three Year Fatality Total =	0

Average Daily Traffic Volume: 2004

Accidents per Million Vehicle Miles is: 0.25

**EL DORADO COUNTY
DEPARTMENT OF TRANSPORTATION**

2013 C.H.P. ACCIDENT SUMMARY FOR BLACKSTONE PW FROM MP-0.00 TO MP-1.84

Report Date: 4/27/2015

The following accident data is based on the C.H.P. Accident Reports for the one year period from January 1, 2013, through December 31, 2013.

The following code numbers have been used to classify the various major types of accidents:

- | | | |
|------------------------------|-----------------------------------|---------------------|
| 1 = Headon | 2 = Sideswipe | 3 = Rearend |
| 4 = Broadside | 5 = Hit Object | 6 = Overturned |
| 7 = Pedestrian Involved | 8 = Bicycle Involved | 9 = Animal Involved |
| 10 = Parked Vehicle Involved | 11 = Snow Removal Equip. Involved | 12 = Other |
| 13 = Motorcycle Involved | 14 = School Bus Involved | |

Street	Mile Post	Dist.	Dir.	Cross Street	# Veh	Injury	Fatal	Time	Cond.	Imp.	Code
BLACKSTONE PW	0.95	220	NORTH	of ALDRIDGE WY (N)	2	0	0	DUSK	DRY	HNBD	3

Total Number of Accidents: 1
 Total Number of Injuries: 0
 Total Number of Fatalities: 0



Darryl Brown <darryl.brown@edcgov.us>

Petition for Blackstone

1 message

Gregory Bundesen <gregory.bundesen@gmail.com>

Thu, Apr 9, 2015 at 1:11 PM

To: darryl.brown@edcgov.us

Cc: david.defanti@edcgov.us, Natalie Porter <natalie.porter@edcgov.us>

Mr. Brown,

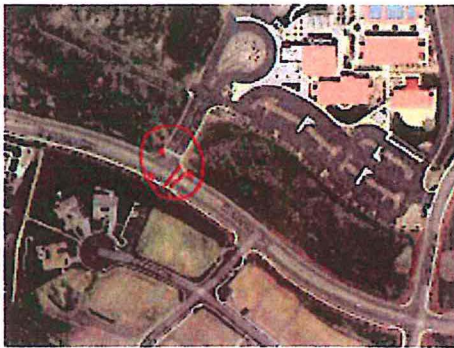
Attached you will find a petition signed by 54 residents of the El Dorado Hills Blackstone Community in support of the request to have the County place a three way stop and a crosswalk at the intersection of Blackstone Parkway and the West entrance of Valley View Elementary School in El Dorado Hills. With the opening of the new Valley View Park and the pending opening of Valley View Elementary School, it is in the best interest of the community and its families to ensure that a safe crossing path is in place as soon as possible. I have also attached a picture of the proposed site.

Thank you for your consideration in the matter. Please let me know if you have any further questions, or if you need any additional materials from me.

Best Regards,

Greg Bundesen
Blackstone
El Dorado Hills

2 attachments

**Blackstone EDH Proposed Site.JPG**
104K **Petition Forms .pdf**
897K