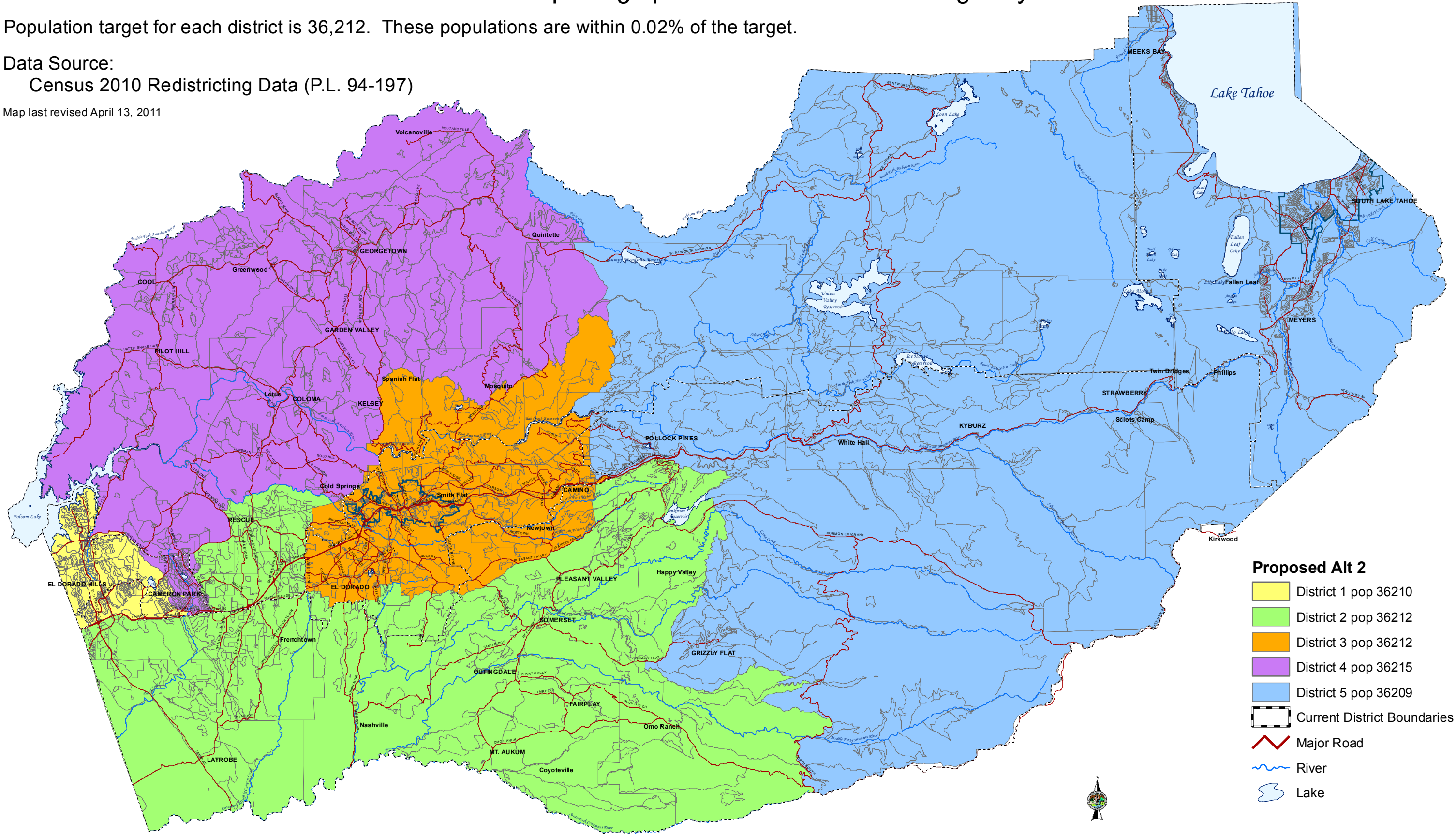


Alternative 2 South Lake Tahoe District picking up Pollock Pines North of Highway 50

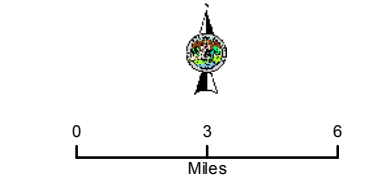
Population target for each district is 36,212. These populations are within 0.02% of the target.

Data Source:
Census 2010 Redistricting Data (P.L. 94-197)

Map last revised April 13, 2011



- Proposed Alt 2**
- District 1 pop 36210
 - District 2 pop 36212
 - District 3 pop 36212
 - District 4 pop 36215
 - District 5 pop 36209
 - Current District Boundaries
 - Major Road
 - River
 - Lake



Map displayed in State Plane Coordinate System (NAD 1983 California Zone 2, feet)

County of El Dorado
State of California