



# SHINGLE SPRINGS OUTDOOR GUN RANGE

Shingle Springs Band of Miwok Indians

# Introduction



- As stewards of the land, the Shingle Springs Band of Miwok Indians is dedicated to protecting the earth for the next “seven generations”
- The Tribe prides itself on offering quality products for the community



# Award-winning Red Hawk Casino





# Shingle Springs Health and Wellness Center





# Preliminary Overview



- The Tribe is developing a state-of-the-art gun range that meets or exceeds all federal standards
- Location
- Design
- Safety and Environmental Plan – Industry’s Best Practices
- Open to the Public – Memberships
- Timeline
- Community Involvement and Comments



# El Dorado Rod & Gun Club Range





# El Dorado Rod & Gun Club Range





# El Dorado Rod & Gun Club Range





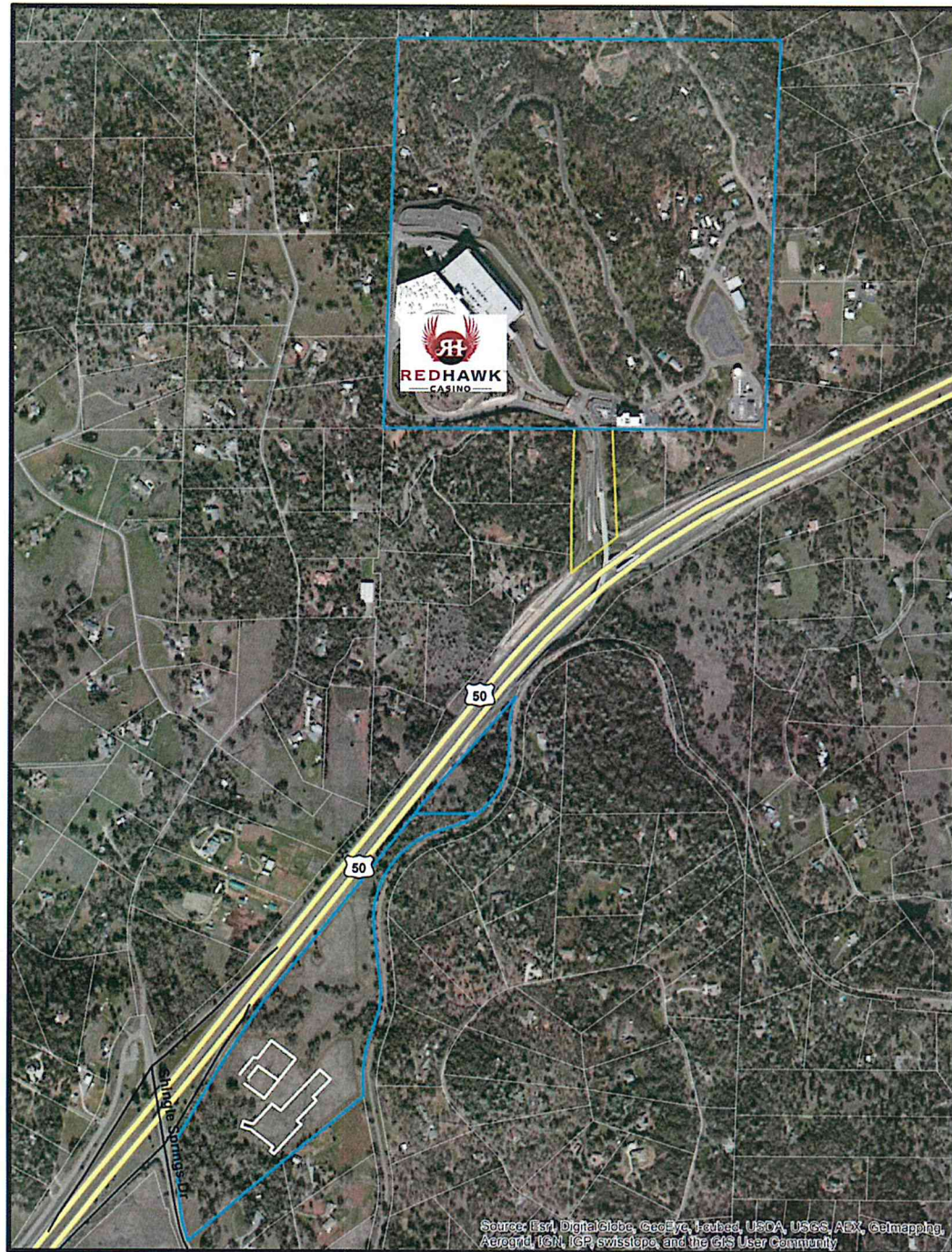
# Location



- Gun Friendly El Dorado County
  - ▣ Gun range will provide a safe and controlled environment for shooting enthusiasts
- Located on approximately two acres of the Tribe's trust land south of Highway 50 off Shingle Springs Drive

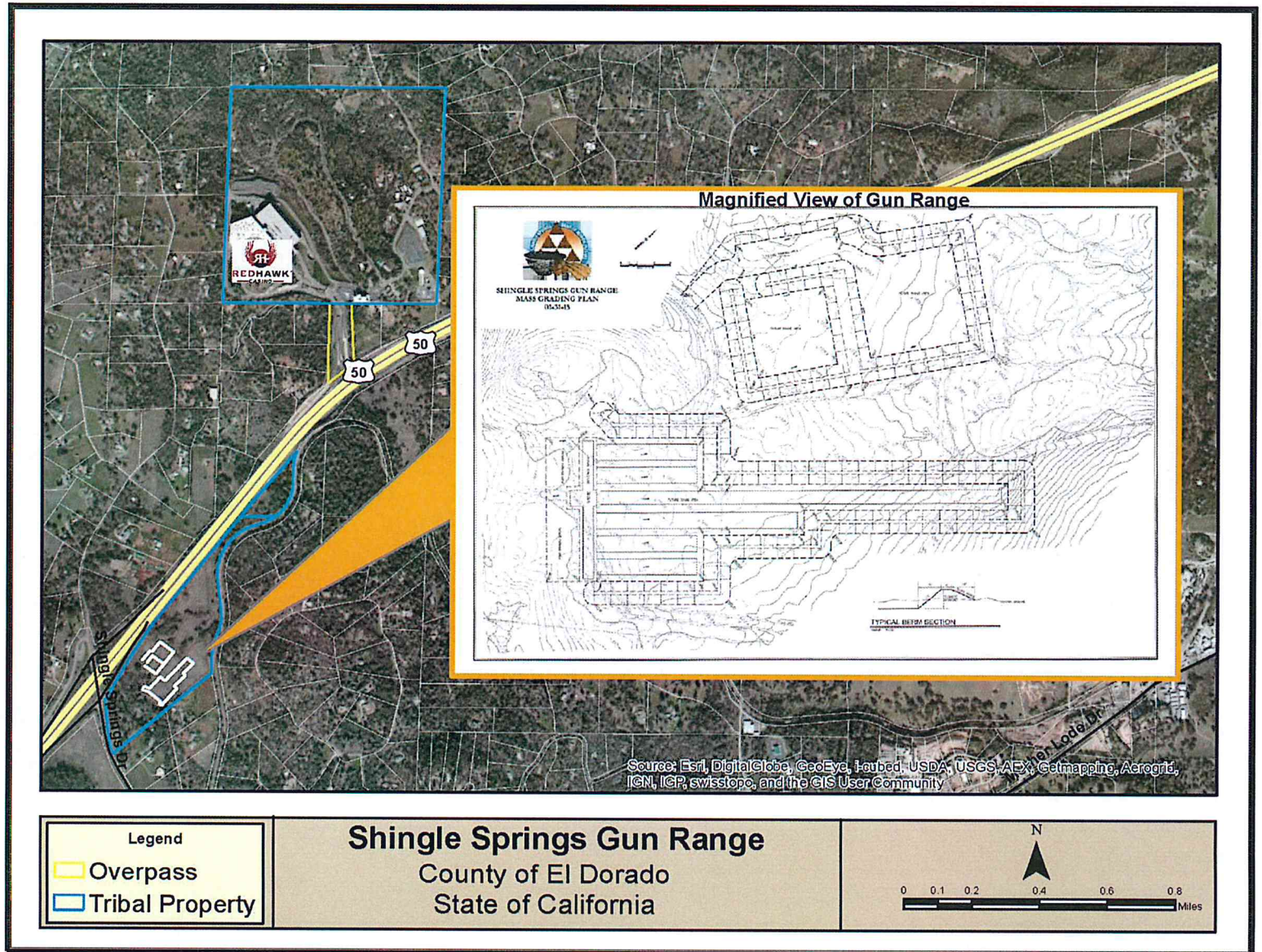
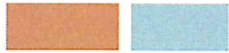


# Location





# Magnified View of Gun Range





# Design



- State-of-the-art facility
- Phase I
  - ▣ Originally designed for 29 lanes
  - ▣ The design will likely be adjusted
- Phase II
  - ▣ Clubhouse
  - ▣ Live-fire shoot house primarily for law enforcement or military tactical team training



# Artist Rendering





# Artist Rendering





# Artist Rendering





# Artist Rendering





# Artist Rendering





# Artist Rendering





# Safety and Environmental

- This state-of-the-art gun range will meet or exceed all federal standards for safety, environmental and occupational controls
- Range will be managed by an NRA Certified Chief Range Safety Officer
- All firing line personnel will be NRA Certified Range Safety Officers
- Draft Safety Manual is posted on Tribe's website
- Firing line structure is designed to minimize the risk of stray bullets or errant shots
- The gun range will be staffed during all business hours by a Range Safety Officer
- Safety training



# Safety and Environmental

- Employ sophisticated, state-of-the-art technologies to ensure sound barriers and lead collection and removal
- Sound - Canopied range with sidewalls. Baffles and other acoustical materials to be installed
- Grass, shrubs, trees are all natural sound barriers
- Proposed Lead Collection System – only system approved for use in National Parks. Gel-Cor and ELIXIR developed by U.S. Army Corps of Engineers
- Tribe has engaged an acoustic consultant to do sound studies and mitigation
- Mitigate further once built



# Memberships



- Focus on firearm training and safety
- Family and Single Memberships
- Special access to local law enforcement and other licensed instructors for training



# Timeline



- Groundbreaking – tentatively late winter to spring
- Construction – approximately three months from groundbreaking
- Planned opening – summer 2015

# Community Involvement

- This outdoor gun range is for the community
- **Met with a variety of organizations including:**
  - ▣ South Buckeye Homeowners Association
  - ▣ Buckeye Elementary School – shared with the schools our willingness to meet with parent groups
  - ▣ California Montessori Project
  - ▣ Discovery Hills Church
  - ▣ *Note: We offered to meet with the Shingle Springs Community Alliance, but they refused*



# Questions and Comments



- ❑ We welcome the opportunity to meet with any group, large or small
- ❑ We want to hear your comments
- ❑ Call Tribal Administrator Ernest Vargas 530-387-4970
- ❑ Email us at [gunrange@ssband.org](mailto:gunrange@ssband.org)