

PD-R21-0002/CUP21-0004/P-E25-0001 CREEKSIDE PLAZA ARCO
EXHIBIT K - ELEVATIONS & COLOR CONCEPT PLANS



01 FRONT ELEVATION- SOUTH SIDE
SCALE: 1/4"=1'-0"



02 LEFT ELEVATION- WEST SIDE
SCALE: 1/4"=1'-0"

GENERAL NOTES

A. REVEAL LOCATIONS IN FINISH SYSTEM SHOWN ARE TO ALIGN AS CLOSELY AS POSSIBLE TO ELEVATIONS.

KEYED NOTES

- 1 ALUMINUM ENTRANCE AND STOREFRONT SYSTEM, REFER TO SHEET A5.1 FOR SPECIFICATION
- 2 OVERFLOW DRAIN
- 3 WOOD FASCIA, PAINTED P-3
- 4 17" AM/PM SIGN CHANNEL LETTERS
- 5 WALL MOUNTED LED FIXTURE
- 6 WOOD TRIM, PAINTED P-3
- 7 ROOFTOP EQUIPMENT BEYOND
- 8 MAIN SWITCHGEAR
- 9 CO2 FILL/VENT BOX, VERIFY LOCATION PRIOR TO INSTALLATION
- 10 AWNING ROD AND CLEVIS. REFER TO SHEET A1.4 AND STRUCTURAL PLANS FOR DETAILS
- 11 CANOPY DOWNSPOUT PAINTED TO MATCH STOREFRONT, REFER TO CIVIL PLANS FOR CONTINUATION
- 12 TRADITIONAL CEMENT TRASH RECEPTACLE, REFER TO SHEET Q2.1 FOR SPECIFICATION
- 13 PORTABLE PROPANE TANK DISPLAY, REFER TO SHEET Q2.1 FOR SPECIFICATION
- 14 EMERGENCY SHUT OFF SWITCH, VERIFY LOCATION PRIOR TO INSTALLATION. REFER TO ELECTRICAL SHEETS FOR SPECIFICATIONS
- 15 AIR CURTAIN BEYOND, REFER TO SHEET A2.3 AND MECHANICAL PLANS
- 16 FAUX WINDOW, NO GLASS W/ WOOD FRAME, PAINTED P-1

COLOR LEGEND

- P-1 BENJAMIN MOORE, 1077 "GREAT PLAINS GOLD", SATIN FINISH
- P-2 BENJAMIN MOORE, 1030 "BRANDY CREAM", SATIN FINISH
- P-3 BENJAMIN MOORE, 2121-30 "PEWTER", HIGH GLOSS FINISH

MATERIAL LEGEND

- ACM-1 ALUMINUM COMPOSITE MATERIAL, PANTONE PMS 166c, "ORANGE"
- ACM-2 ALUMINUM COMPOSITE MATERIAL, ALUCOBOND, "RUSTIC WALNUT"
- STONE PANELIZED STONE VENEER MFR: CORONADO, SERIES: PRO-LEDGE COLOR: "ALASKAN SUNSET"
- STUCCO 3/8" CEMENT PLASTER, INSTALLED PER MFG. SPECIFICATIONS; TEXTURE: FINE SAND FINISH
- ALUM CLEAR ANODIZED ALUMINUM
- STL-1 STEEL AWNING
- WOOD HORIZONTAL LAP SIDING
- ROOF METAL ROOFING

CLIENT:

bp

ARCO
BP WEST COAST PRODUCTS, LLC

Barghausen Consulting Engineers, Inc.
18215 72nd Avenue South
Kent, WA 98032
425.251.6222
barghausen.com

NO.	DATE	REVISION DESCRIPTION
1		
2		
3		
4		
5		
6		
7		
8		
9		
10		
11		
12		
13		
14		
15		
16		

Not for Construction

DEVELOPMENT INFORMATION:

ARCO NTI

2900 am/pm

FUEL CANOPY w/ 8 MPD's

105' LONG CAR WASH

SITE ADDRESS:

NWC MISSOURI FLAT RD

@ FORNI ROAD

PLACERVILLE, CALIFORNIA

FACILITY #TBD

DESIGNED BY: ALLIANCE Z&M:

CHECKED BY: BP REP:

DRAWN BY: ALLIANCE PM:

VERSION: PROJECT NO: 21517

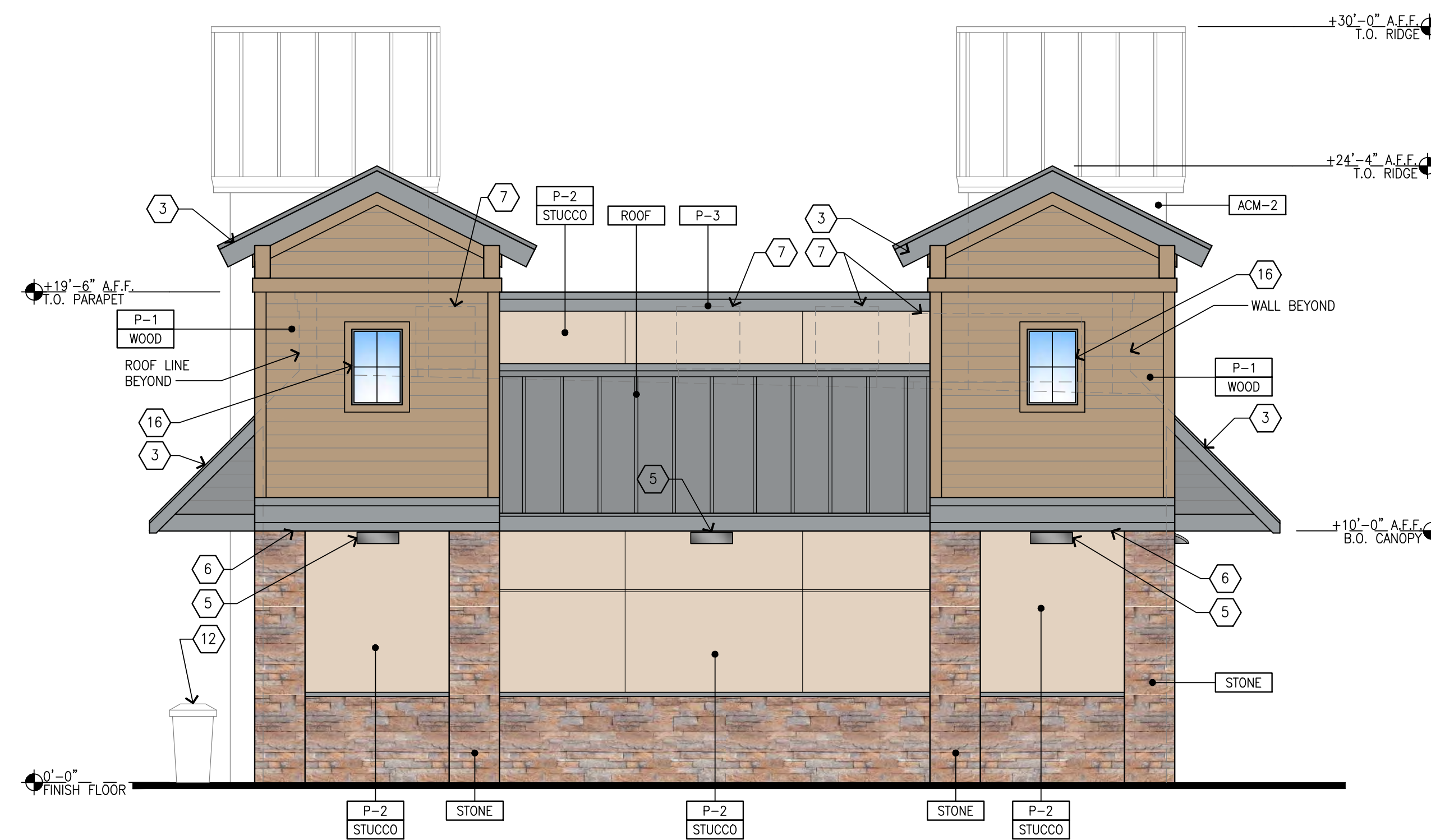
DRAWING TITLE:

EXTERIOR ELEVATIONS

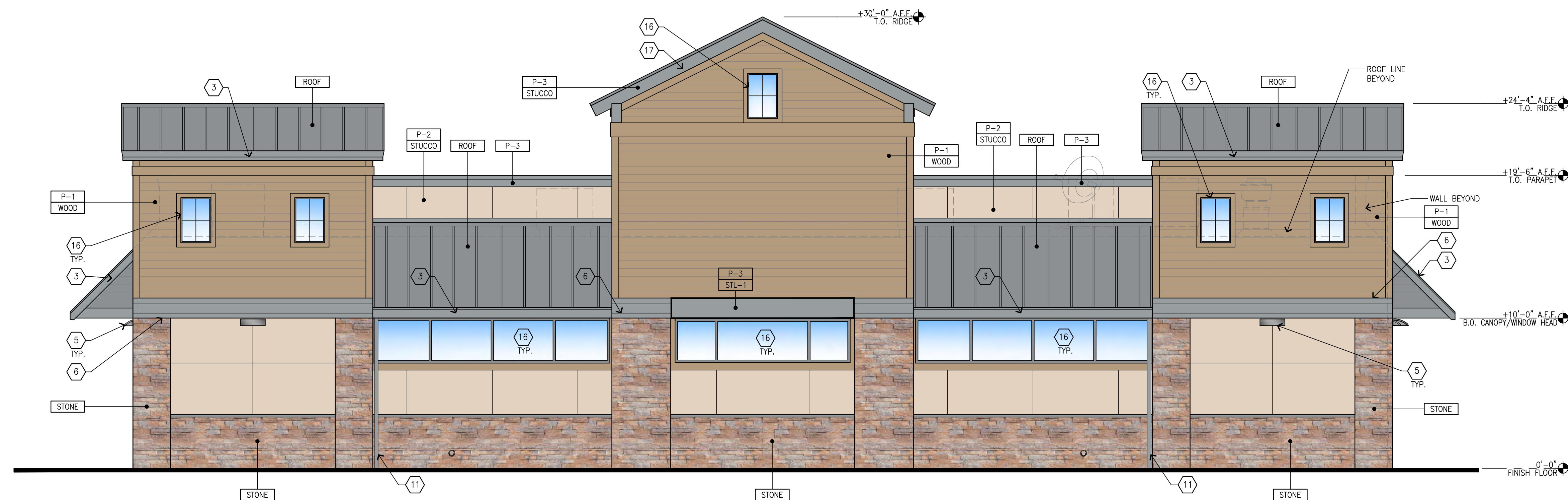
SHEET NO:

A2.1

**PD-R21-0002/CUP21-0004/P-E25-0001 CREEKSIDE PLAZA ARCO
EXHIBIT K - ELEVATIONS & COLOR CONCEPT PLANS**



0.3
- **RIGHT ELEVATION- EAST SIDE**
SCALE: 1/4"=1'-0"



04 **REAR ELEVATION- NORTH SIDE**
- SCALE: 1/4"=1'-0"


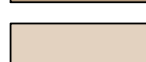

GENERAL NOTES

A. REVEAL LOCATIONS IN FINISH SYSTEM SHOWN ARE TO ALIGN AS CLOSELY AS POSSIBLE TO ELEVATIONS.


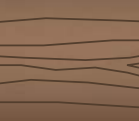

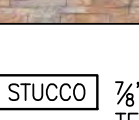

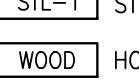
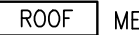

KEYED NOTES

- | | |
|----|---|
| 1 | ALUMINUM ENTRANCE AND STOREFRONT SYSTEM, REFER TO SHEET A5.1 FOR SPECIFICATION |
| 2 | OVERFLOW DRAIN |
| 3 | WOOD FASCIA, PAINTED P-3 |
| 4 | 17" AM/PM SIGN CHANNEL LETTERS |
| 5 | WALL MOUNTED LED FIXTURE |
| 6 | WOOD TRIM, PAINTED P-3 |
| 7 | ROOFTOP EQUIPMENT BEYOND |
| 8 | MAIN SWITCHGEAR |
| 9 | CO2 FILL/VENT BOX, VERIFY LOCATION PRIOR TO INSTALLATION |
| 10 | ANVILING ROD AND CLEVIS. REFER TO SHEET A1.4 AND STRUCTURAL PLANS FOR DETAILS |
| 11 | CANOPY DOWNSPOUT PAINTED TO MATCH STOREFRONT, REFER TO CIVIL PLANS FOR CONTINUATION |
| 12 | TRADITIONAL CEMENT TRASH RECEPTACLE, REFER TO SHEET Q2.1 FOR SPECIFICATION |
| 13 | PORTABLE PROPANE TANK DISPLAY, REFER TO SHEET Q2.1 FOR SPECIFICATION |
| 14 | EMERGENCY SHUT OFF SWITCH, VERIFY LOCATION PRIOR TO INSTALLATION. REFER TO ELECTRICAL SHEETS FOR SPECIFICATIONS |
| 15 | AIR CURTAIN BEYOND, REFER TO SHEET A2.3 AND MECHANICAL PLANS |
| 16 | FAUX WINDOW, NO GLASS W/ WOOD FRAME, PAINTED P-1 |

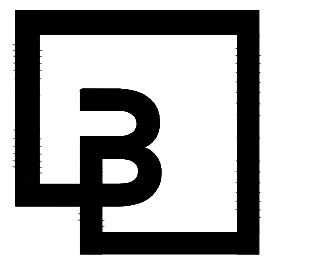
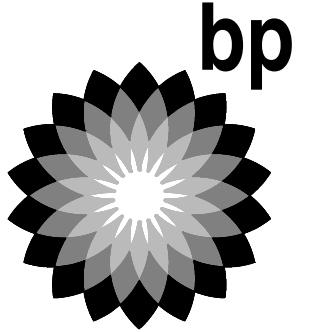
COLOR LEGEND

- | | |
|---|--|
|  | <div style="border: 1px solid black; padding: 2px; display: inline-block;">P-1</div> BENJAMIN MOORE, 1077
"GREAT PLAINS GOLD", SATIN FINISH |
|  | <div style="border: 1px solid black; padding: 2px; display: inline-block;">P-2</div> BENJAMIN MOORE, 1030
"BRANDY CREAM", SATIN FINISH |
|  | <div style="border: 1px solid black; padding: 2px; display: inline-block;">P-3</div> BENJAMIN MOORE, 2121-30
"PEWTER", HIGH GLOSS FINISH |

MATERIAL LEGEND

- | | |
|---|--|
|  | <div>ACM-1</div> <div>ALUMINUM COMPOSITE MATERIAL,
PANTONE PMS 166c, "ORANGE"</div> |
|  | <div>ACM-2</div> <div>ALUMINUM COMPOSITE MATERIAL,
ALUCOBOND, "RUSTIC WALNUT"</div> |
|  | <div>STONE</div> <div>PANELIZED STONE VENEER
MFR: CROMADO, SERIES: PRO-LEDGE
COLOR: "ALASKAN SUNSET"</div> |
|  | <div>STUCCO</div> <div>3/4" CEMENT PLASTER, INSTALLED PER MFG. SPECIFICATIONS;
TEXTURE: FINE SAND FINISH</div> |
|  | <div>ALUM</div> <div>CLEAR ANODIZED ALUMINUM</div> |
|  | <div>STL-1</div> <div>STEEL AWNING</div> |
|  | <div>WOOD</div> <div>HORIZONTAL LAP SIDING</div> |
|  | <div>ROOF</div> <div>METAL ROOFING</div> |

CUENT:



**Barghausen
Consulting Engineers, Inc.**

18215 72nd Avenue South
Kent, WA 98032
425.251.6222
barghausen.com

NO.	DATE	REVISION DESCRIPTION
1		
2		
3		
4		
5		
6		
7		
8		
9		
10		
11		
12		

SEAL:

Not for
Construction

DEVELOPMENT INFORMATION:

ARCO NTI
2900 am/pm
FUEL CANOPY w/ 8 MPD's
105' LONG CAR WASH

SITE ADDRESS:

NWC MISSOURI FLAT RD
@ FORNI ROAD
PLACERVILLE, CALIFORNIA

FACILITY #TBD

DESIGNED BY:	ALLIANCE Z&DM:
--------------	----------------

CHECKED BY:	BP REPM:
-------------	----------

DRAWN BY:	ALLIANCE PM:
-----------	--------------

VERSION:	PROJECT NO:
----------	-------------

DRAWING TITLE:	
----------------	--

EXTERIOR

EXTERIOR ELEVATIONS

ELEVATIONS

SHEET NO:

A2.2

PD-R21-0002/CUP21-0004/P-E25-0001 CREEKSIDE PLAZA ARCO
EXHIBIT K - ELEVATIONS & COLOR CONCEPT PLANS

NOTE:
ALL WALLS TO BE CMU
TO A PLATE HEIGHTS-
MIN 9'-0" IN HEIGHT

GENERAL NOTES

- A. REVEAL LOCATIONS IN FINISH SYSTEM SHOWN ARE TO ALIGN AS CLOSELY AS POSSIBLE TO ELEVATIONS.
B. SEE SHEET A4.3 FOR ACM PANEL JOINT DETAILS

KEYED NOTES

- 1 ALUMINUM ENTRANCE AND STOREFRONT SYSTEM, REFER TO SHEET A5.3 & SPECIFICATION.
2 STEEL ROOF AWNING
3 OVERFLOW DRAIN
4 MTL TRELLIS FIXTURE
5 SMALL INTERNALLY ILLUMINATED SURFACE MOUNTED WALL SIGN
6 WALL MOUNTED LED FIXTURE

COLOR LEGEND

- P-1 BENJAMIN MOORE, 1077 "GREAT PLAINS GOLD", SATIN FINISH
P-2 BENJAMIN MOORE, 1030 "BRANDY CREAM", SATIN FINISH
P-3 BENJAMIN MOORE, 2121-30 "PEWTER", HIGH GLOSS FINISH
P-15 BENJAMIN MOORE, 2121-30 "PEWTER", HIGH GLOSS FINISH
P-16 BENJAMIN MOORE, 2121-30 "PEWTER", HIGH GLOSS FINISH

MATERIAL LEGEND

- STONE PANELIZED STONE VENEER MFR: CORONADO, SERIES: PRO-LEDGE COLOR: "ALASKAN SUNSET"
STUCCO 3/8" CEMENT PLASTER, INSTALLED PER MFG. SPECIFICATIONS; TEXTURE: FINE SAND FINISH
ALUM CLEAR ANODIZED ALUMINUM
ROOF STANDING SEAM METAL ROOF
STL-1 STEEL AWNING
WOOD WOOD TRIM
SIDING HORIZ WOOD SIDING

CLIENT: **bp**

ARCO
BP WEST COAST PRODUCTS, LLC

Barghausen Consulting Engineers, Inc.
18215 72nd Avenue South
Kent, WA 98032
425.251.6222
barghausen.com

NO.	DATE	REVISION DESCRIPTION
1		
2		
3		
4		
5		
6		
7		
8		
9		
10		
11		
12		
13		
14		
15		
16		
17		
18		
19		
20		
21		
22		
23		
24		
25		
26		
27		
28		
29		
30		
31		
32		
33		
34		
35		
36		
37		
38		
39		
40		
41		
42		
43		
44		
45		
46		
47		
48		
49		
50		
51		
52		
53		
54		
55		
56		
57		
58		
59		
60		
61		
62		
63		
64		
65		
66		
67		
68		
69		
70		
71		
72		
73		
74		
75		
76		
77		
78		
79		
80		
81		
82		
83		
84		
85		
86		
87		
88		
89		
90		
91		
92		
93		
94		
95		
96		
97		
98		
99		
100		

Not for
Construction

DEVELOPMENT INFORMATION:
ARCO NTI
2900 am/pm
FUEL CANOPY w/ 8 MPD's
105' LONG CAR WASH

SITE ADDRESS:
NWC MISSOURI FLAT RD
9 FORTH ROAD
PLACERVILLE, CALIFORNIA

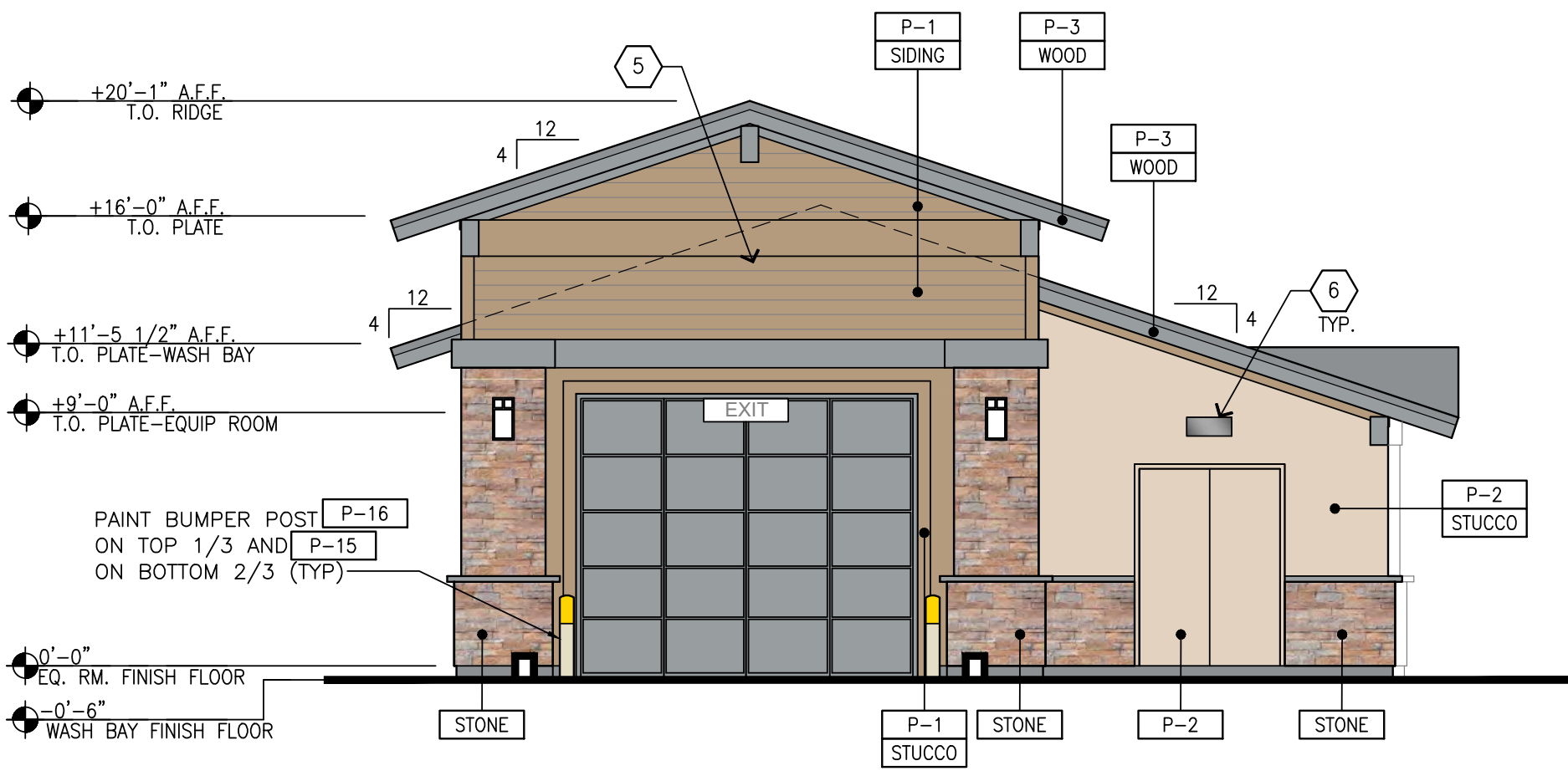
FACILITY #TBD

DESIGNED BY: ALLIANCE ZADON:
CHECKED BY: BP REPA:
DRAWN BY: ALLIANCE PM:
VERSION: PROJECT NO: 21517

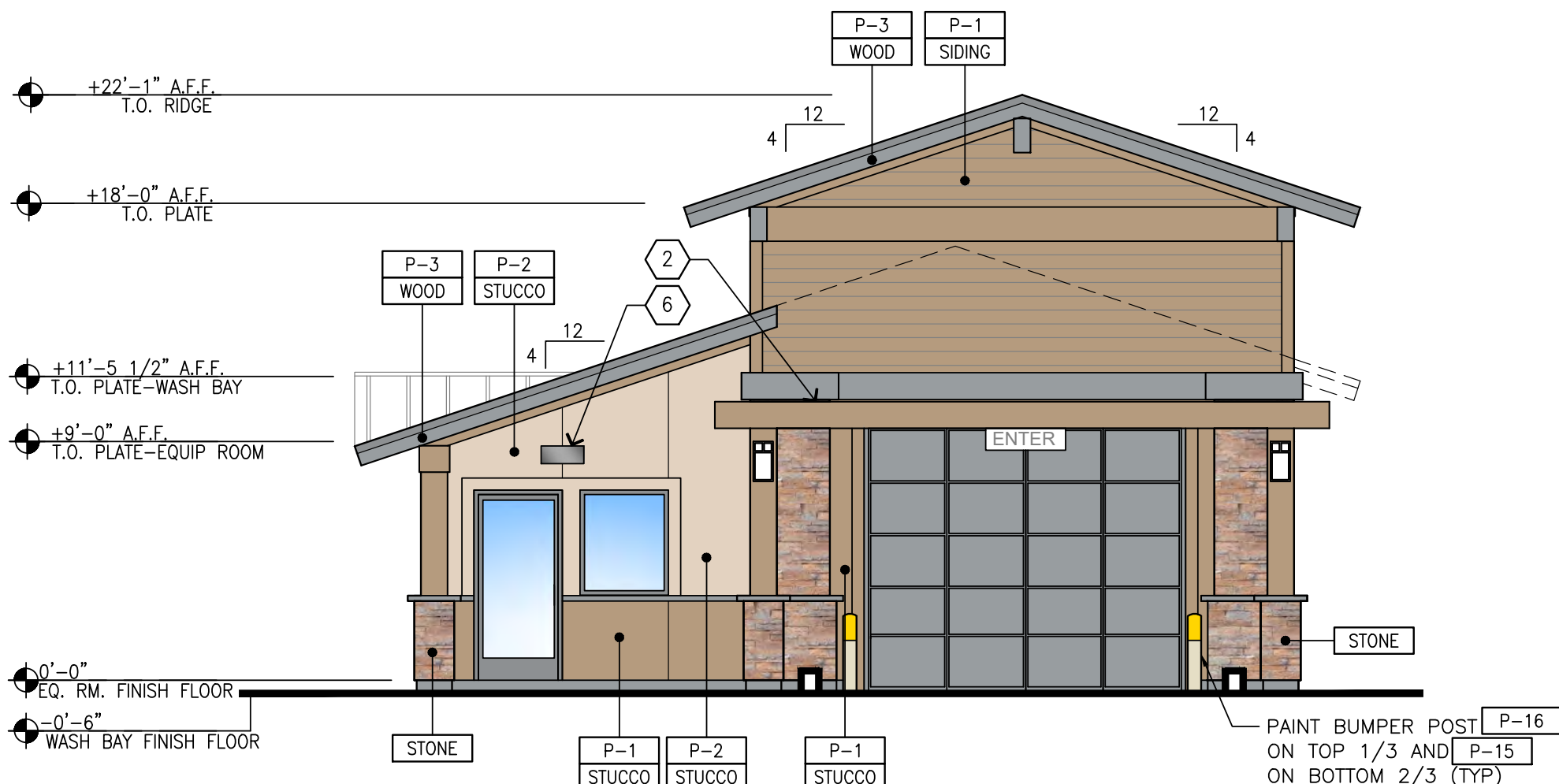
CARWASH ELEVATIONS

SHEET NO:

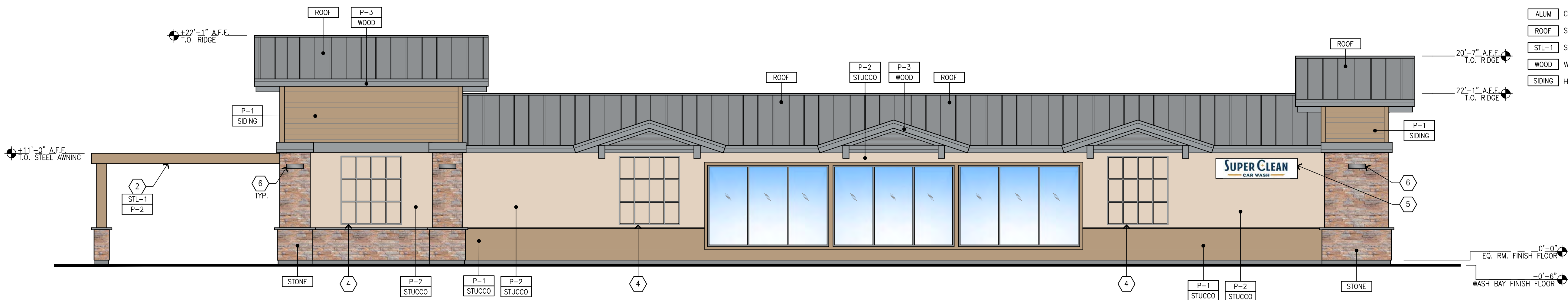
CWA2.1



1 LEFT ELEVATION-WEST SIDE
SCALE: 3/16"=1'-0"



2 RIGHT ELEVATION-EAST SIDE
SCALE: 3/16"=1'-0"

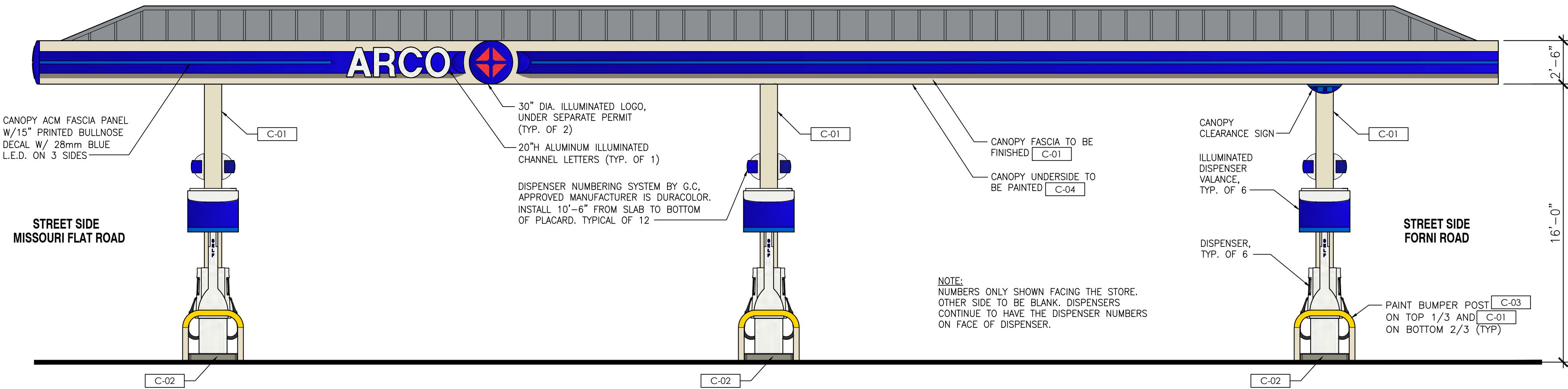


3 FRONT ELEVATION-SOUTH SIDE
SCALE: 3/16"=1'-0"

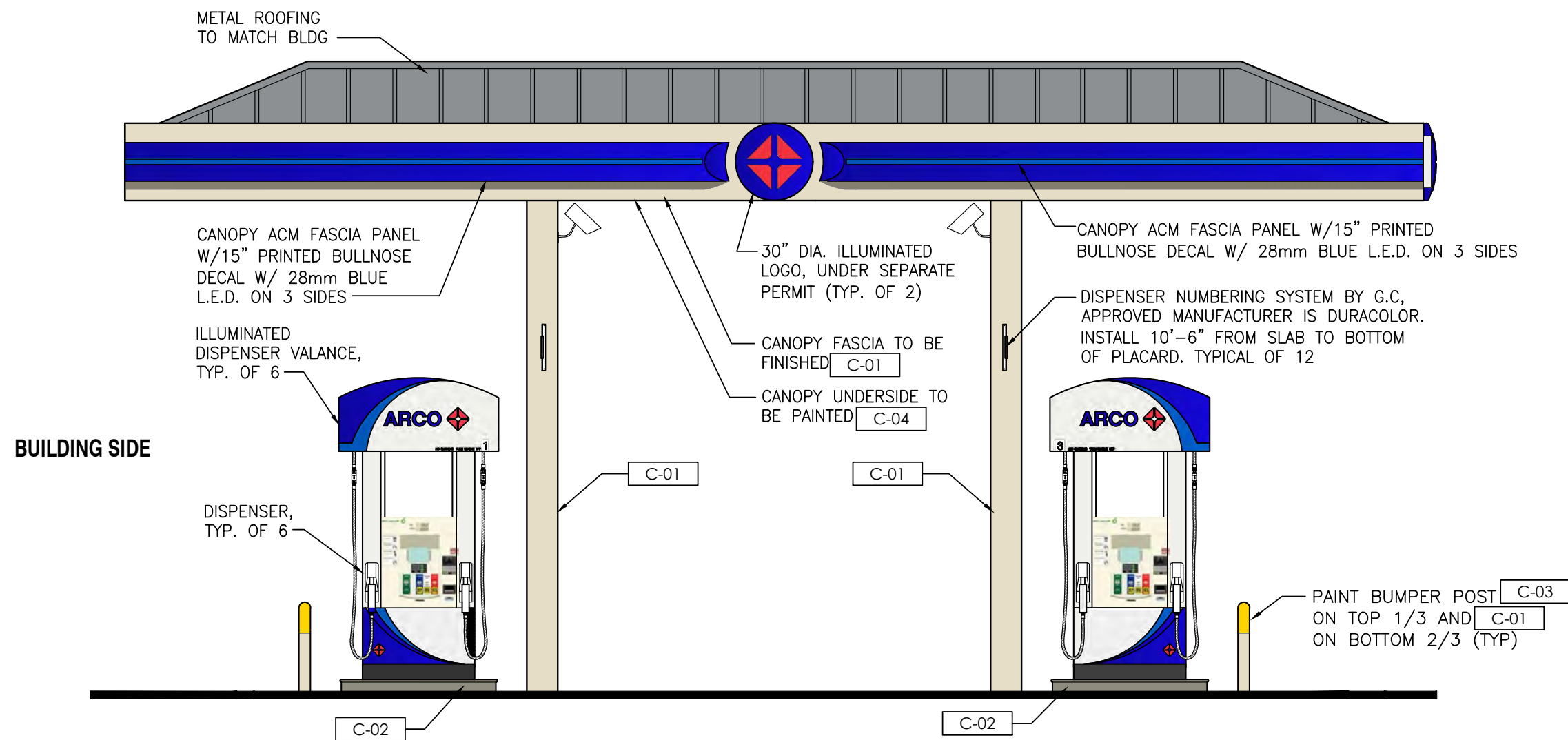


4 REAR ELEVATION-NORTH SIDE
SCALE: 3/16"=1'-0"

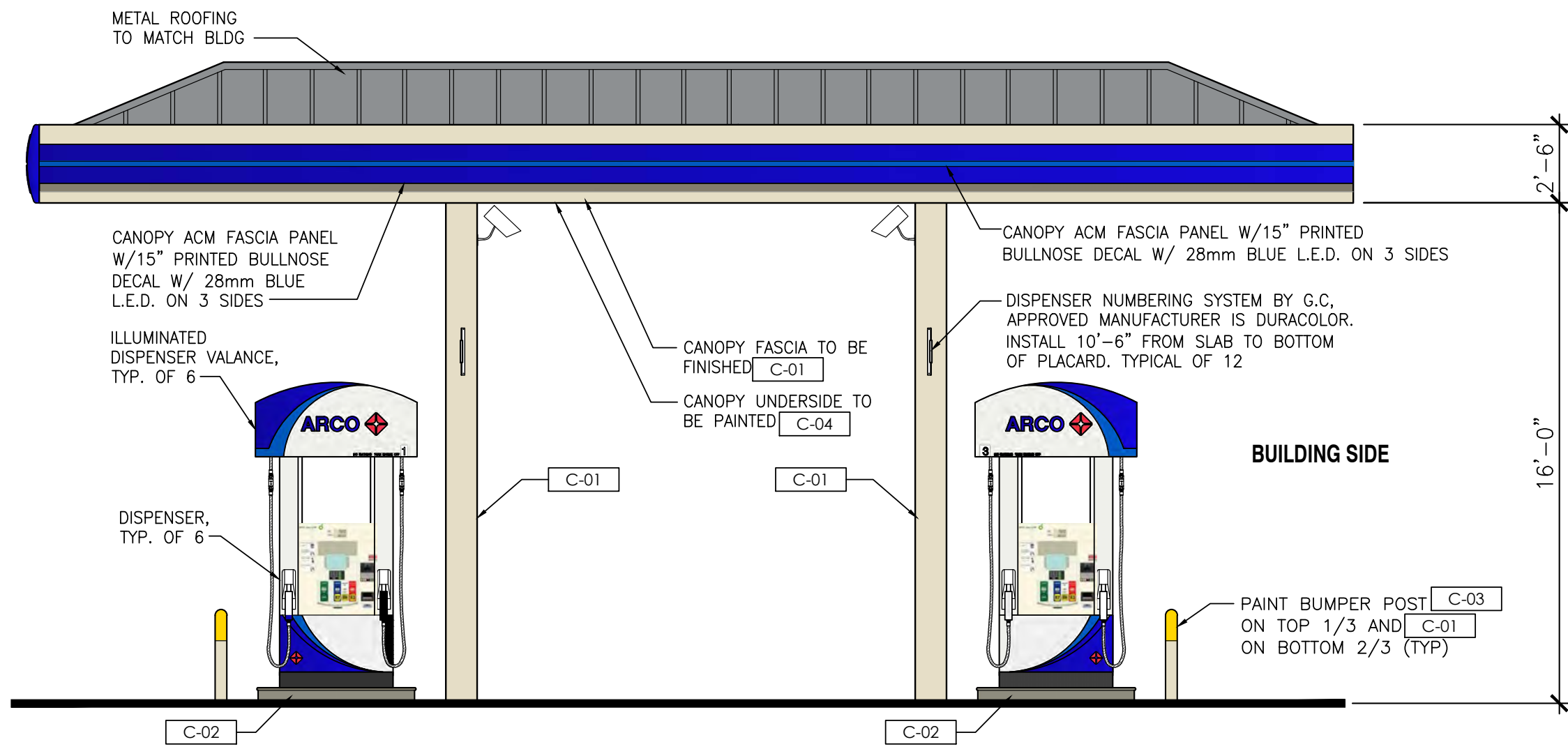
PD-R21-0002/CUP21-0004/P-E25-0001 CREEKSIDE PLAZA ARCO
EXHIBIT K - ELEVATIONS & COLOR CONCEPT PLANS



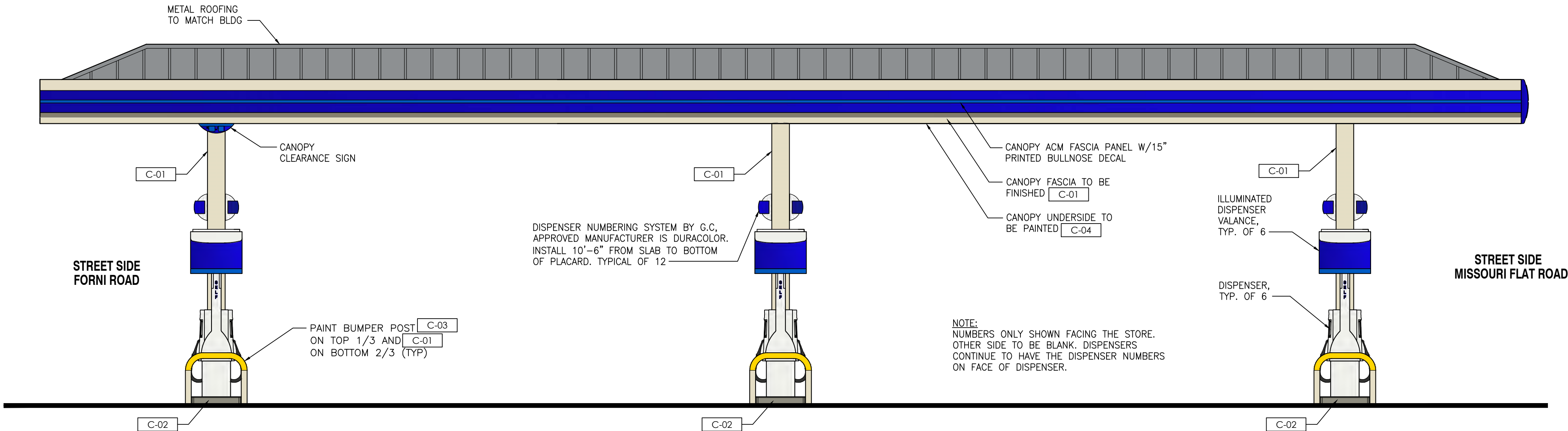
01 WEST CANOPY ELEVATION (FACING CAR WASH)
SCALE: 1/4"=1'-0"



02 NORTH CANOPY ELEVATION (FACING FORNI ROAD)
SCALE: 1/4"=1'-0"



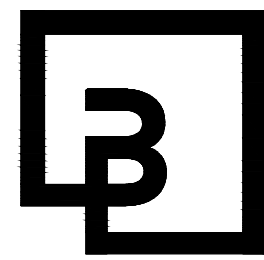
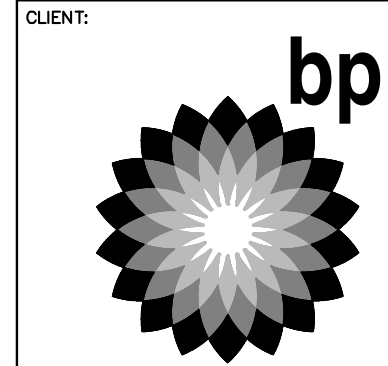
03 SOUTH CANOPY ELEVATION (FACING MISSOURI FLAT ROAD)
SCALE: 1/4"=1'-0"



04 EAST CANOPY ELEVATION (FACING BUILDING)
SCALE: 1/4"=1'-0"

COLOR LEGEND

C-01	BP PEARL - BENJAMIN MOORE, OC-8, "ELEPHANT TUSK"
C-02	BP WARM GREY - BENJAMIN MOORE, 2137-40, "DESERT TWILIGHT"
C-03	BP YELLOW - BENJAMIN MOORE, 2022-10, "YELLOW"
C-04	HIGH HIDING WHITE - BENJAMIN MOORE, 2123-70, "ICE MIST"



Barghausen
Consulting Engineers, Inc.

18215 72nd Avenue South
Kent, WA 98032
425.251.6222
barghausen.com

NO.	DATE	REVISION DESCRIPTION
1		
2		
3		
4		
5		
6		
7		
8		
9		
10		
11		
12		
13		
14		
15		
16		
17		
18		
19		
20		
21		
22		
23		
24		
25		
26		
27		
28		
29		
30		
31		
32		
33		
34		
35		
36		
37		
38		
39		
40		
41		
42		
43		
44		
45		
46		
47		
48		
49		
50		
51		
52		
53		
54		
55		
56		
57		
58		
59		
60		
61		
62		
63		
64		
65		
66		
67		
68		
69		
70		
71		
72		
73		
74		
75		
76		
77		
78		
79		
80		
81		
82		
83		
84		
85		
86		
87		
88		
89		
90		
91		
92		
93		
94		
95		
96		
97		
98		
99		
100		

DEVELOPMENT INFORMATION:
ARCO NTI
2900 am/pm
FUEL CANOPY w/ 8 MPD's
105' CAR WASH

SITE ADDRESS:
NWC MISSOURI FLAT RD
@ FORNI ROAD
PLACERVILLE, CALIFORNIA

FACILITY #TBD

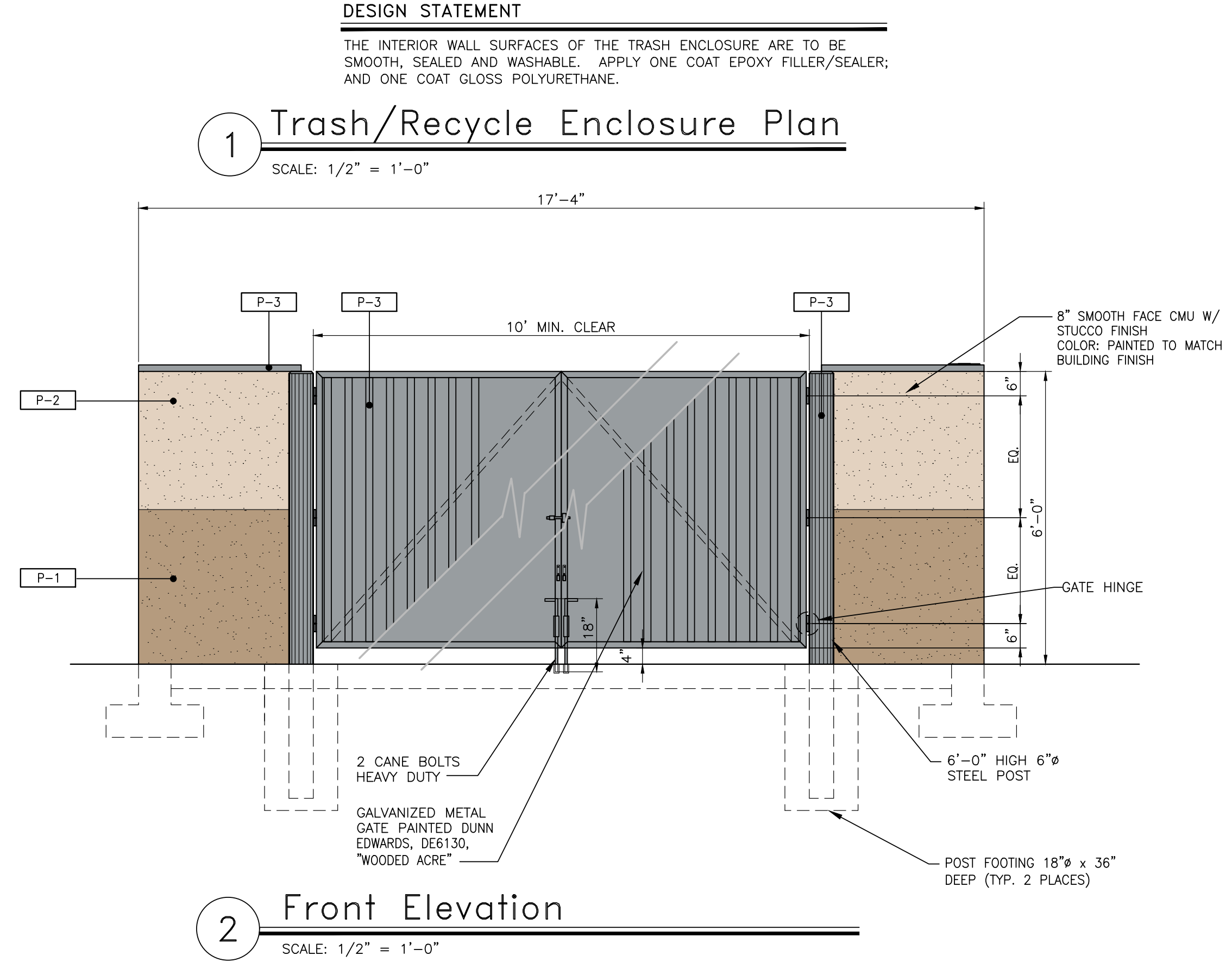
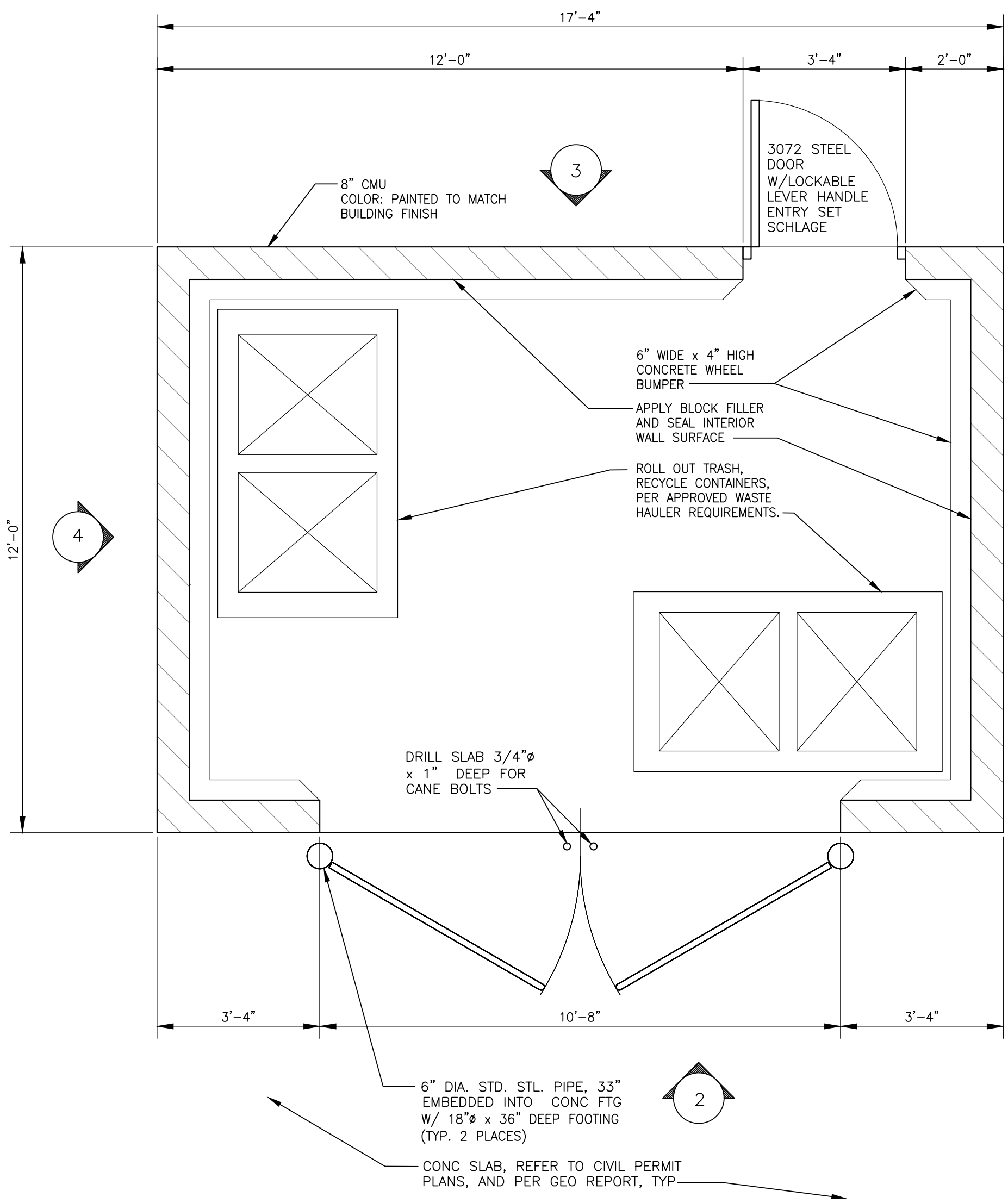
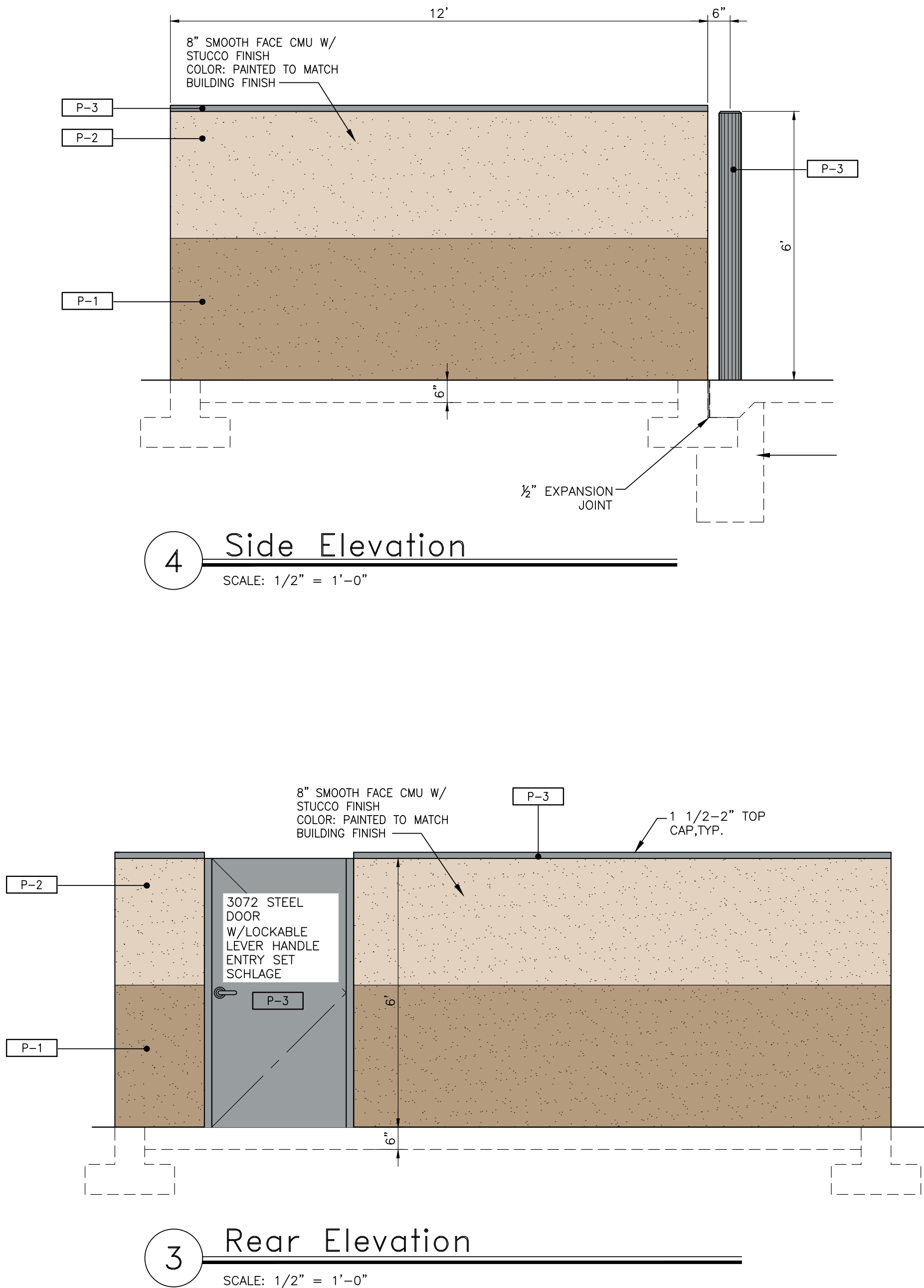
DESIGNED BY: PT ALLIANCE ZADM:
CHECKED BY: PT BP REF:
DRAWN BY: MP ALLIANCE PM:
VERSION: - PROJECT NO: 21517

DRAWING TITLE:
CANOPY ELEVATIONS COLOR

SHEET NO:

CA2.1

PD-R21-0002/CUP21-0004/P-E25-0001 CREEKSIDE PLAZA ARCO
EXHIBIT L - TRASH ENCLOSURE RECYCLE AND VACUUM PLANS



CLIENT:

bp

ARCO
BP WEST COAST PRODUCTS, LLC

Barghausen Consulting Engineers, Inc.
18215 72nd Avenue South
Kent, WA 98032
425.251.6222
barghausen.com

NO.	DATE	REVISION DESCRIPTION
1		
2		
3		
4		
5		
6		
7		
8		
9		
10		
11		
12		

SEAL:

Not for Construction

DEVELOPMENT INFORMATION:

ARCO NTI
2900 am/pm
FUEL CANOPY w/ 8 MPD's
105' LONG CAR WASH

SITE ADDRESS:

NWC MISSOURI FLAT RD
@ FORNI ROAD
PLACERVILLE, CALIFORNIA

FACILITY #TBD

DESIGNED BY:	ALLIANCE ZADM:
CHECKED BY:	BP REPM:
DRAWN BY:	ALLIANCE PM:
VERSION:	PROJECT NO:
	21517

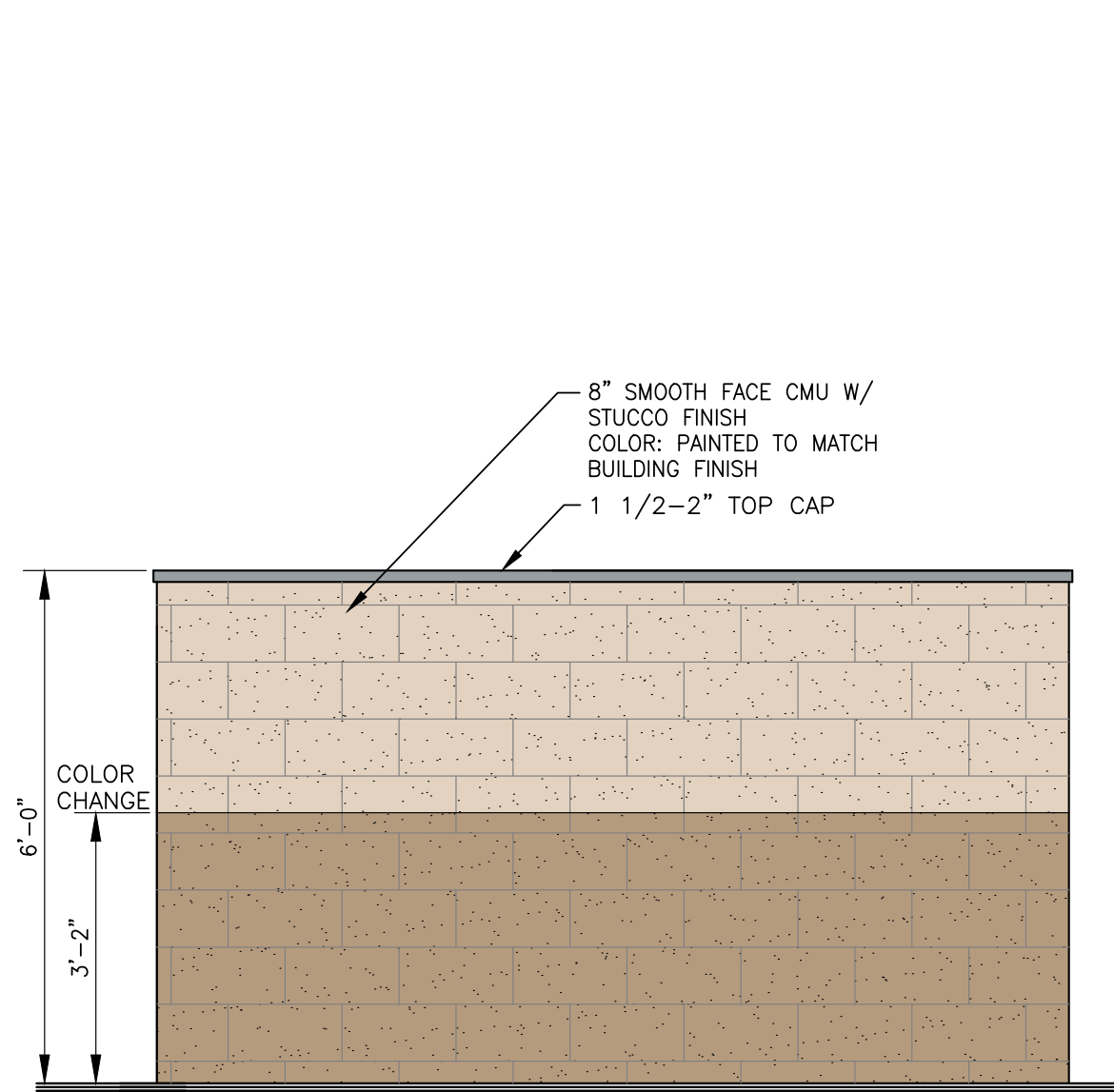
DRAWING TITLE:

TRASH ENCLOSURE

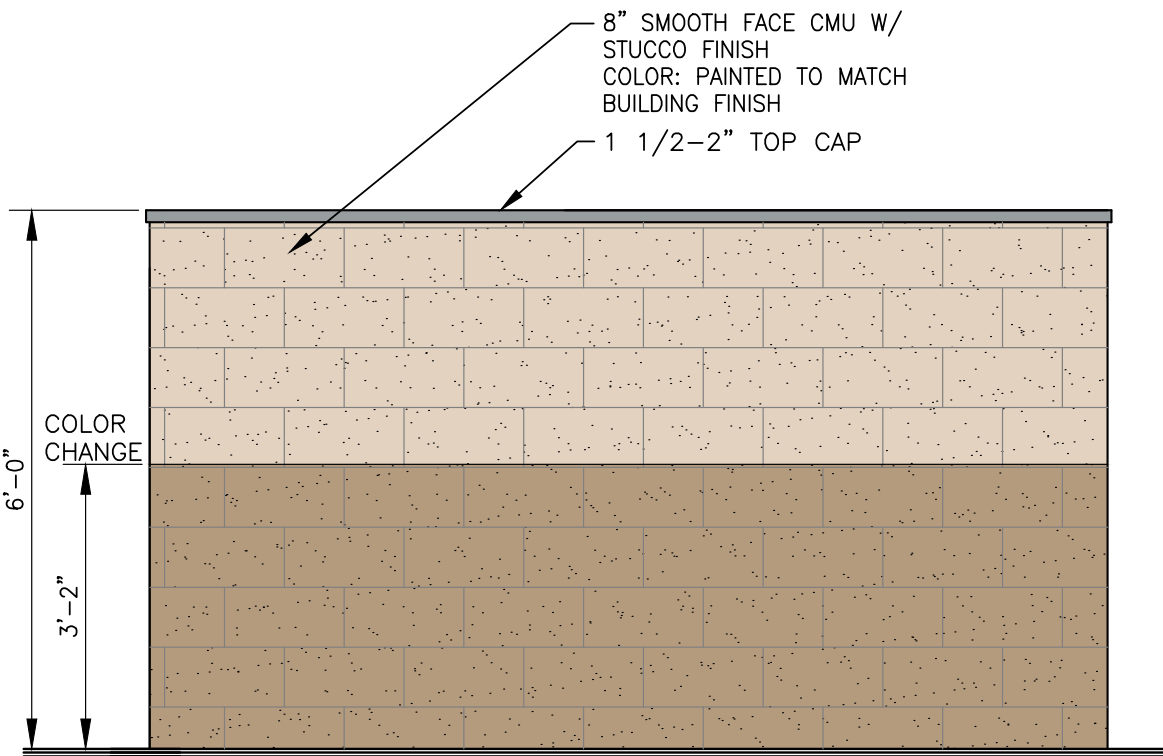
SHEET NO:

G1.4

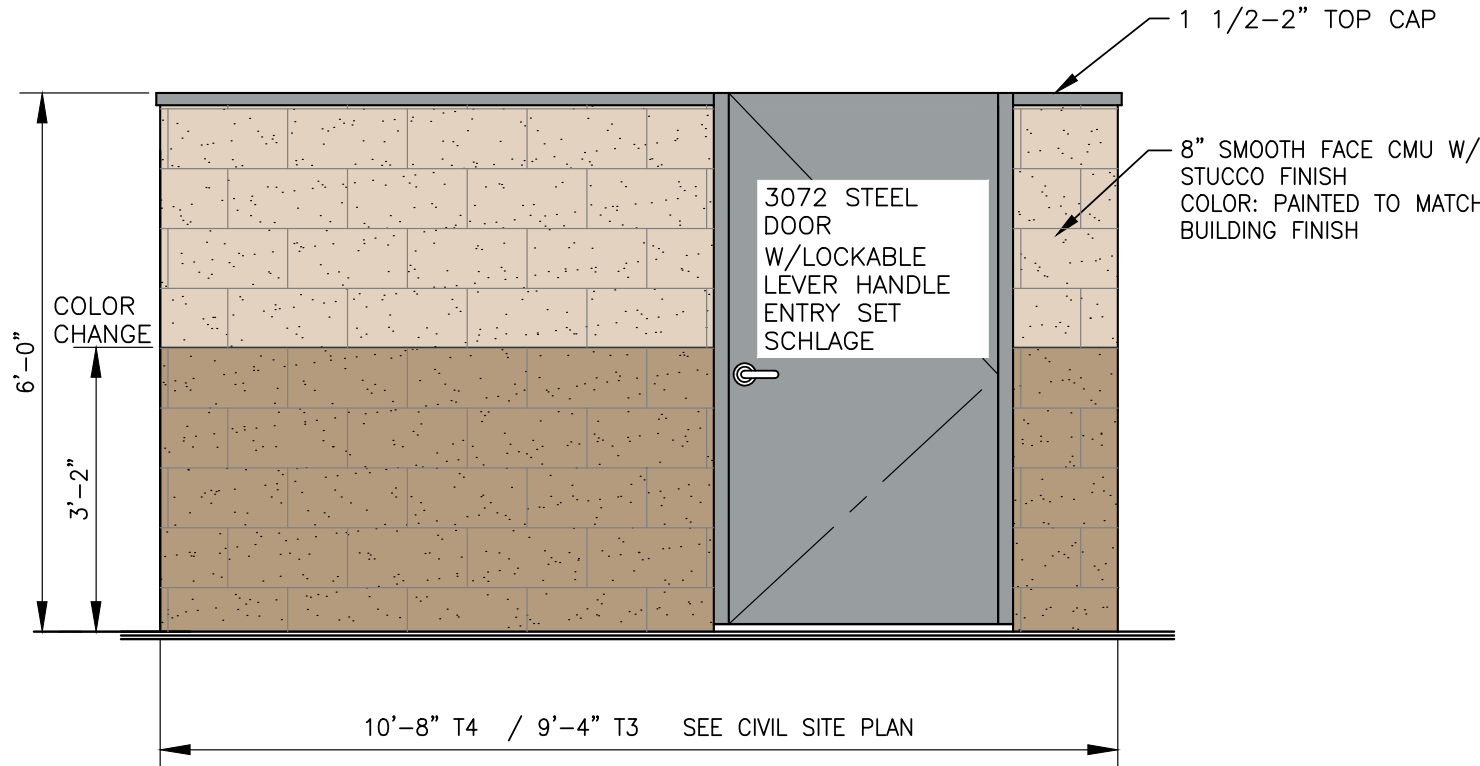
PD-R21-0002/CUP21-0004/P-E25-0001 CREEKSIDE PLAZA ARCO
EXHIBIT L - TRASH ENCLOSURE RECYCLE AND VACUUM PLANS



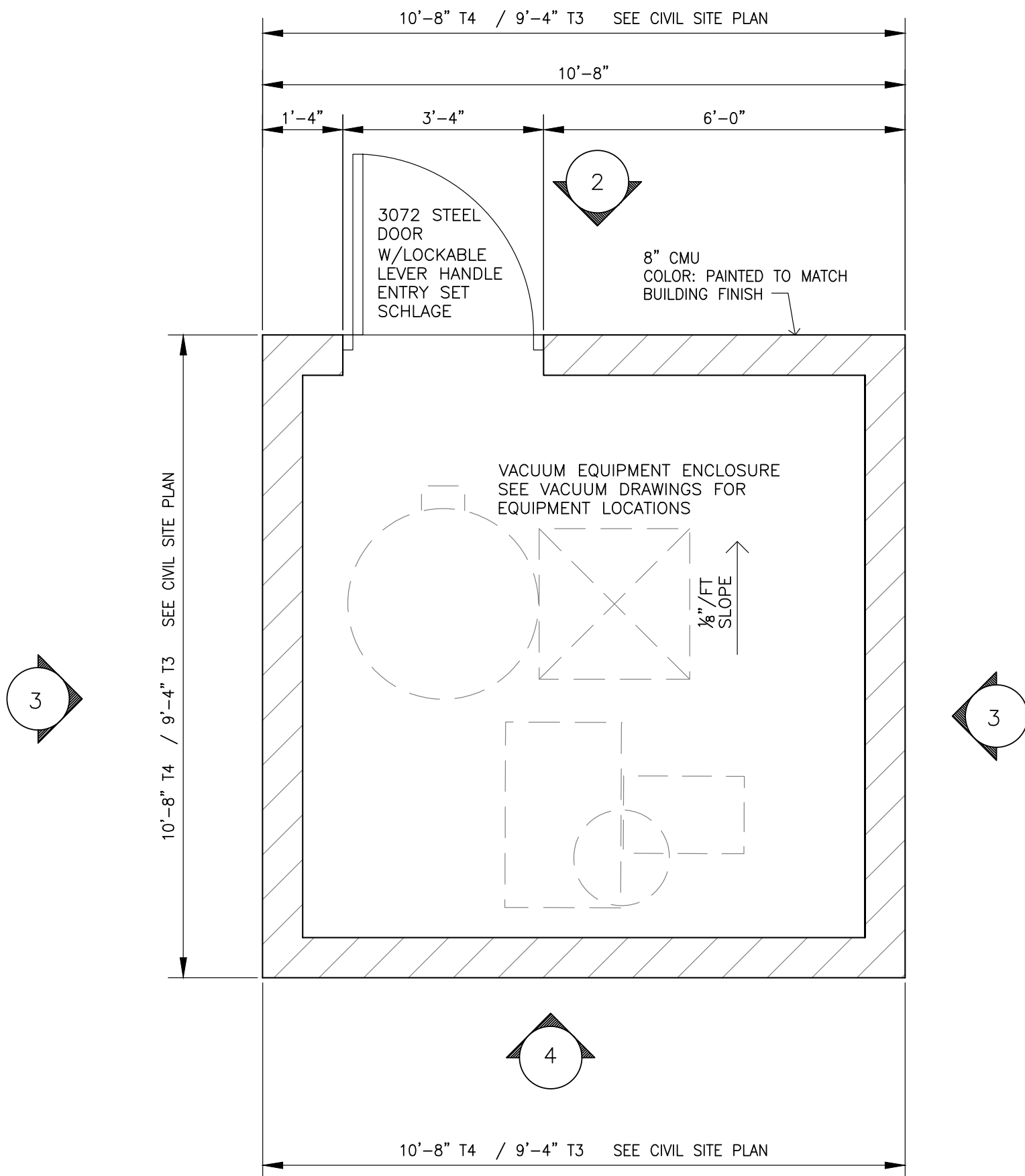
3 SIDE ELEVATION
SCALE: 1/2" = 1'-0"



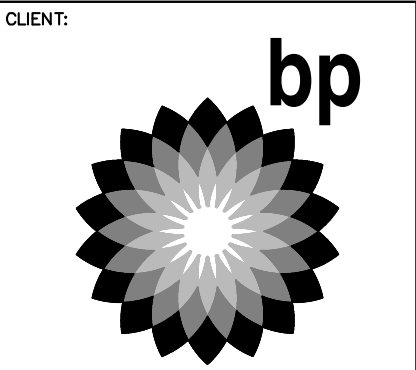
4 REAR ELEVATION
SCALE: 1/2" = 1'-0"



2 FRONT ELEVATION
SCALE: 1/2" = 1'-0"



1 Vac Equip Enclosure Plan
SCALE: 1/2" = 1'-0"



NO.	DATE	REVISION DESCRIPTION
1		
2		
3		
4		
5		
6		
7		
8		
9		
10		
11		
12		

Not for Construction

DESIGNED BY:		ALLIANCE ZADM:	
CHECKED BY:		BP REF:	
DRAWN BY:		ALLIANCE PM:	
VERSION:		PROJECT NO:	
		21517	

VACUUM EQUIP ENCLOSURE

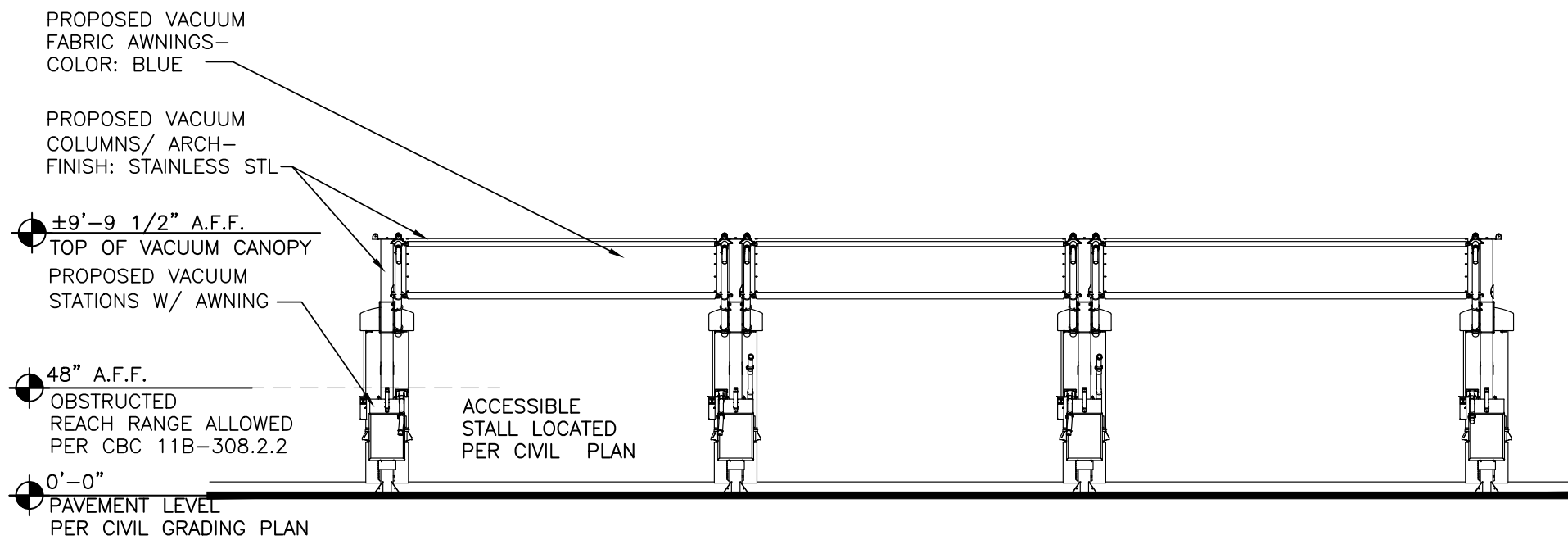
SHEET NO:

VE.1

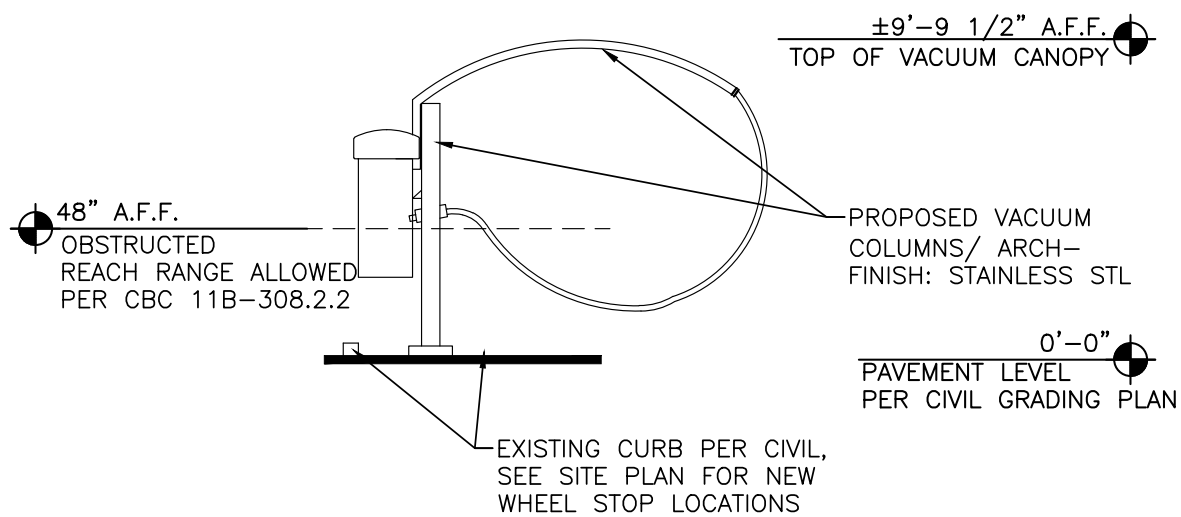
PD-R21-0002/CUP21-0004/P-E25-0001 CREEKSIDE PLAZA ARCO
EXHIBIT L - TRASH ENCLOSURE RECYCLE AND VACUUM PLANS



03 VACUUM REFERENCE PHOTO
SCALE: NTS

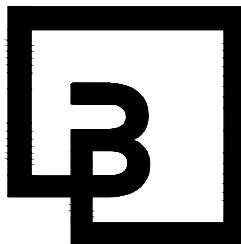
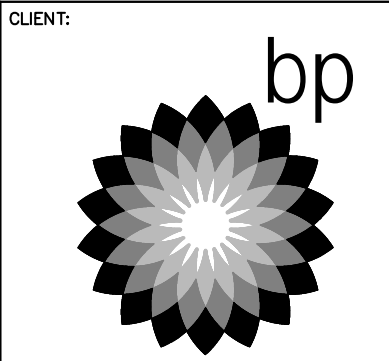


01 VACUUM FRONT ELEVATION
SCALE: 3/16"=1'-0"



02 VACUUM SIDE ELEVATION
SCALE: 3/16"=1'-0"

Preliminary Not For Construction



**Barghausen
Consulting Engineers, Inc.**
18215 72nd Avenue South
Kent, WA 98032
425.251.6222
barghausen.com

NO.	DATE	REVISION DESCRIPTION
1		
2		
3		
4		
5		
6		
7		
8		
9		
10		
11		
12		

Not for
Construction

DEVELOPMENT INFORMATION:
ARCO NTI
2900 am/pm
FUEL CANOPY w/ 8 MPD'S
105' LONG CAR WASH

SITE ADDRESS:
NWC MISSOURI FLAT RD
@ FORNI ROAD
PLACERVILLE, CALIFORNIA

FACILITY #TBD

DESIGNED BY:	ALLIANCE 280M:
CHECKED BY:	BP REP:
DRAWN BY:	ALLIANCE PM:
VERSION:	PROJECT NO: 21517

DRAWING TITLE:
VACUUM PLAN
& ELEVATIONS

SHEET NO:

VAC1.1