



## Workshop Regarding Solano County Regional Plan to Address Homelessness

*January 17, 2018*

# Catholic Charities of Santa Rosa

- Serves 6 counties
- Cares for Seniors, Counsels Immigrants, and Challenges Poverty
- Annual Budget of \$11.5M

## Homeless and Housing Services

- Resident Outreach Services Team (R.O.S.T.)
- Clear Start Mobile Home Trailer
- Case Manager Case
- Drop in Day Center (Homeless Services Center)
- Coordinated Entry Program
- Three Emergency Shelters for individuals who shelter in hot, family shelters, or full medical capacity shelters
- Rapid Re-Housing Program (2017-2020)
- Financial Empowerment Workshop (2018/2019)

# Homeless and Housing Services

- Homeless Outreach Services Team (H.O.S.T.)
- Clean Start Mobile Shower Trailer
- Conservation Crew
- Drop-in Day Center (Homeless Services Center)
- Coordinated Entry Program
- Three Emergency Shelters (213 bed single adult shelter, 138 bed family shelter, 26 bed medical respite shelter)
- Rapid Re-Housing Program (200 units)
- Permanent Supportive Housing (115 units)

# Homelessness in Sonoma County (2017)

TOTAL NUMBER OF HOMELESS INDIVIDUALS ENUMERATED DURING THE POINT-IN-TIME HOMELESS CENSUS



Source: Applied Survey Research, Inc. and Sonoma County Behavioral Center



TOTAL NUMBER OF HOMELESS PEOPLE BY AGE GROUP AND GENDER RACE

Age Group	Male	Female	Total
0-17	1	0	1
18-24	10	10	20
25-34	15	15	30
35-44	20	20	40
45-54	25	25	50
55-64	30	30	60
65-74	35	35	70
75-84	40	40	80
85+	45	45	90
Total	1,000	1,000	2,000

Source: Applied Survey Research, Inc. and Sonoma County Behavioral Center

TOTAL NUMBER OF HOMELESS INDIVIDUALS ENUMERATED DURING THE POINT-IN-TIME HOMELESS CENSUS

Total Homeless Population: 2,835

35% Sheltered

65% Unsheltered



23%  
Emergency  
Shelter



12%  
Transitional  
Housing or  
Safe Haven



32%  
On the  
Street



2%  
Abandoned  
Buildings



18%  
Vans/ Cars/  
RVs



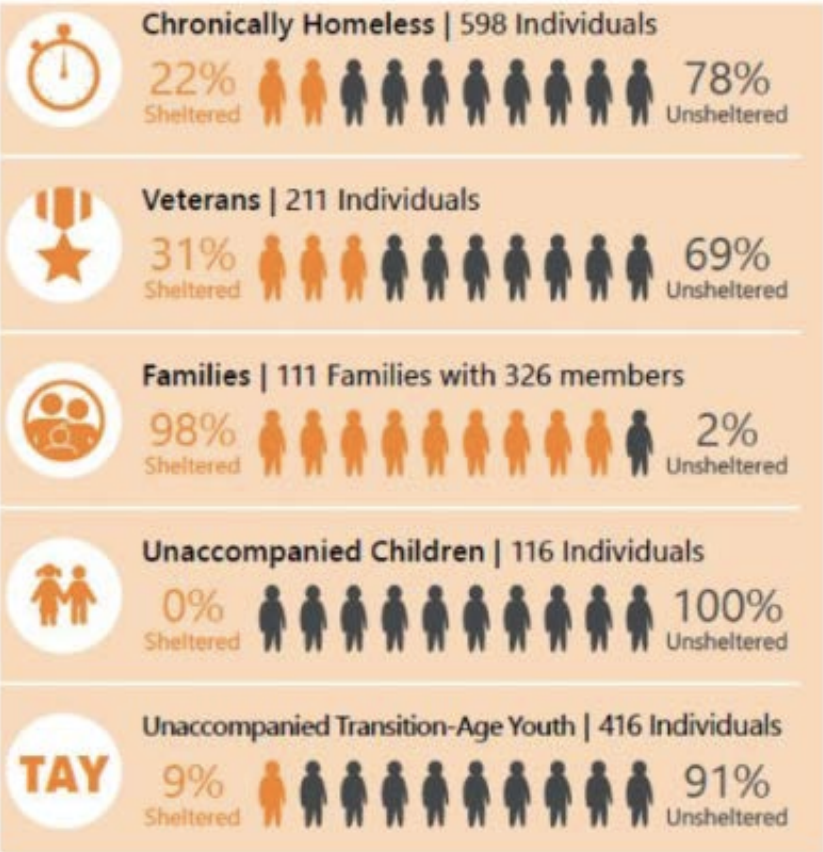
13%  
Encamp-  
ments

Source: Applied Survey Research. (2017). Sonoma County Homeless Census.

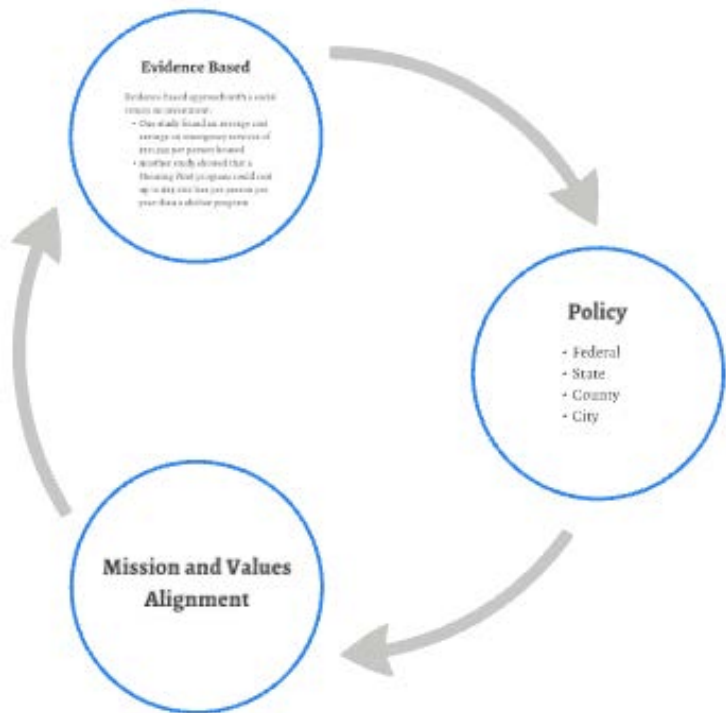
**TOTAL NUMBER OF HOMELESS PERSONS BY JURISDICTION AND SHELTER STATUS**

JURISDICTION	UNSHelterED			SHelterED			TOTAL		
	2015	2016	2017	2015	2016	2017	2015	2016	2017
<b>North County</b>	154	137	227	64	46	66	218	183	293
Cloverdale	43	53	28	6	11	24	49	64	52
Healdsburg	86	55	69	58	35	42	144	90	111
Town of Windsor	13	7	46	0	0	0	13	7	46
Unincorporated	12	22	84	0	0	0	12	22	84
<b>South County</b>	289	285	219	234	213	178	523	498	397
Cotati	86	3	9	0	0	0	86	3	9
Petaluma	136	85	113	225	213	170	361	298	283
Rohnert Park	36	126	76	9	0	8	45	126	84
Unincorporated	31	71	21	0	0	0	31	71	21
<b>West County</b>	299	204	279	40	46	40	339	250	319
Sebastopol	98	44	71	0	0	0	98	44	71
Unincorporated	201	160	208	40	46	40	241	206	248
<b>Sonoma Valley</b>	124	64	156	34	22	33	158	86	189
Sonoma	13	15	78	14	6	13	27	21	91
Unincorporated	111	49	78	20	16	20	131	65	98
<b>Santa Rosa</b>	1,204	1,216	966	652	661	652	1,856	1,877	1,618
Santa Rosa	994	979	769	652	661	636	1,646	1,640	1,405
Unincorporated	210	237	197	0	0	16	210	237	213
Confidential	0	0	0	13	12	19	13	12	19
<b>Total</b>	<b>2,070</b>	<b>1,906</b>	<b>1,847</b>	<b>1,037</b>	<b>1,000</b>	<b>988</b>	<b>3,107</b>	<b>2,906</b>	<b>2,835</b>

*Source: Applied Survey Research. (2015-2017). Sonoma County Homeless Census.*



# Why Housing First?





## Evidence Based


Evidence-based approach with a social return on investment:

- One study found an average cost savings on emergency services of \$311,545 per person housed
- Another study showed that a Housing First program could cost up to \$23,000 less per person per year than a shelter program

# Policy

- Federal
- State
- County
- City

---



**Mission and Values  
Alignment**

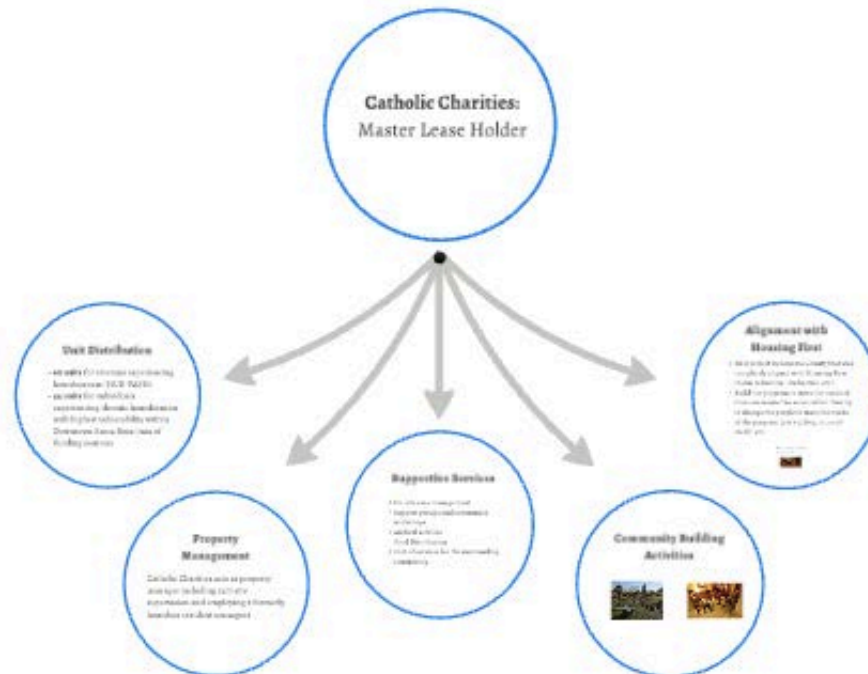


# Homelessness in Sonoma County 2015

- Increased visibility in Downtown Santa Rosa
- Tight Housing Market
- Neighborhood and Business Tensions
- Top Issue for City and County
- Community felt there was an overall lack of progress on the issue



# Palms Inn Program Overview





**Catholic Charities:**  
Master Lease Holder

## Unit Distribution

- **60 units** for veterans experiencing homelessness (HUD-VASH)
- **44 units** for individuals experiencing chronic homelessness with highest vulnerability within Downtown Santa Rosa (mix of funding sources)





## **Property Management**

Catholic Charities acts as property manager including 24/7 site supervision and employing 2 formerly homeless resident managers





## **Supportive Services**

- On-site case management
- Support groups and community workshops
- Medical services
- Food Distribution
- Hub of services for the surrounding community

# Community Building Activities







## Alignment with Housing First

- First project in Sonoma County that was completely aligned with Housing First (harm reduction, low barrier, etc.)
- Build the program to meet the needs of those we wanted to serve rather than try to change the people to meet the needs of the program (pet's policy, income/ credit, etc.)

What were the first few weeks like?

Page 17 of 20



## What were the first few weeks like?

*Supportive Services were key to ensuring that people remained housed!*



# Was it successful?

## Reduction in Crisis Services



- Admissions to the emergency center and its parent facility declined by 41%
- Interactions with law enforcement reduced by 25%
- Ambulance transportation reduced by 16%
- Usage of crisis services such as outside hotlines reduced by 28%

## Why is it successful?

- Cross-Sector Collaboration
- Public-Private Partnership
- Political Will
- Re-purposing existing property
- Creative Funding Compilation
- Alignment with Housing First

## Other Outcomes



- After one year of operations (2016-2017) the following outcomes were found:
- Youth's homelessness declined by 15%
  - Chronic homelessness declined by 22%
  - Homelessness in Santa Rosa declined by 16%
  - Neighborhood Revitalization

## Stories of those we serve...



...and more stories of those we serve...

## Contact Information

Sanabria Hinkley, MPA  
Senior Director of Shelter and Housing  
415-942-4242 (x44)  
775-225-2219 (ext 60)  
[shinkley@hshk.org](mailto:shinkley@hshk.org)

# Reduction in Crisis Services



- Admittance to the emergency room and in-patient hospitalization reduced by 45%
- Interactions with law enforcement reduced by 77%
- Ambulance transportation reduced by 56%
- Usage of crisis services such as suicide hotlines reduced by 98%



---

## Other Outcomes



After **one year** of operations (2016-2017) the following outcomes were found:

- Veteran's homelessness declined by 23%
- Chronic homelessness declined by 20%
- Homelessness in Santa Rosa declined by 16%
- Neighborhood Revitalization

## Stories of those we serve....



"For a long time, I was getting worried about having faith in humanity and losing faith in God. I never was really a religious man, but I hoped. It [Palmer] was a blessing. I didn't know if we were going to be able to be here next another year."

- James Palmer (see Resident who had been homeless for 20 years)



"I was going to the hospital more than I was staying out. Sick with pneumonia all the time, cold whatever, and then I had my high blood pressure and all that stuff. Now, since you been in, everything's just perfect. I know I couldn't do another winter out here."

- Mary Palmer (see Resident who had been homeless for 20 years)



"When Rudy died, my appetite shut with him. But since moving in here, the light inside me is burning brighter and brighter every day."

- Joe (Thomas Wilson and Palmer Joe Smith)

"I started crying when I found out... I'd be able to sleep in my own bed and I'd be able to cook a hot meal... Life is going to get worse for you and for some other people. That's going to help tremendously - nobody wants to be out here."

- Audrey (O.E. Army Wilson and Palmer Joe Smith)

"For a long time, I was getting worried about having faith in humanity and losing faith in God. I never was really a religious man, but I hoped. It (Palms Inn) was a blessing. I didn't know if we were going to be able to be homeless another year."

*- James (Palms Inn Resident who had been homeless for 7 years)*

"I was going to the hospital more than I was staying out. Sick with pneumonia all the time, cold whatever, and then I had my high blood pressure and all that stuff. Now, since I've been in, everything's just perfect...I knew I couldn't do another winter out here."

*- Mary (Palms Inn Resident who had been homeless for 10+ years)*

"When Rudy died, my appetite died with him. But since moving in here, the light inside me is burning brighter and brighter every day."

*- Rex (Vietnam Veteran and Palms Inn Resident)*

"I started crying when I found out...I'll be able to sleep in my own bed and I'll be able to cook a hot meal...life is going to get easier for me and for some other people. That's going to help tremendously - nobody wants to be out here."

*- Rodney (U.S. Army Veteran and Palms Inn Resident)*

## **Why is it successful?**

- Cross-Sector Collaboration
- Public-Private Partnership
- Political Will
- Re-purposing existing property
- Creative Funding Compilation
- Alignment with Housing First

# Contact Information

Jennielynn Holmes, MPA

Senior Director of Shelter and Housing

707-800-2372 (cell)

707-542-5426 (office)

[jholmes@srcharities.org](mailto:jholmes@srcharities.org)