



EL DORADO WESTERN RAILROAD

The living history program of the
EL DORADO COUNTY HISTORICAL MUSEUM





The Placerville Branch of the Southern Pacific Railroad - Preservation IS Operation

2



18-1754 A 2 of 24



El Dorado Western Railroad Sunday Operations

3



“Stop and Protect” road crossing protocol

4



18-1754 A 4 of 24



Restored Plymouth Locomotive

5



18-1754 A 5 of 24



Completed Flat car to Passenger car conversion

6



18-1754 A 6 of 24



Restoring the El Dorado “west” switch

7



18-1754 A 7 of 24



Relocating SPTC rail from Old Depot Road

8



18-1754 A 8 of 24



Washout repair, west of Mother Lode Drive

9





Weed Abatement and assisting the CCC



Weekly brush clearing and MOW work





Cleaned and stabilized three historic railroad crew buildings

12



11-5-2018

18-1754 A 12 of 24



Volunteers are the heart of this program!

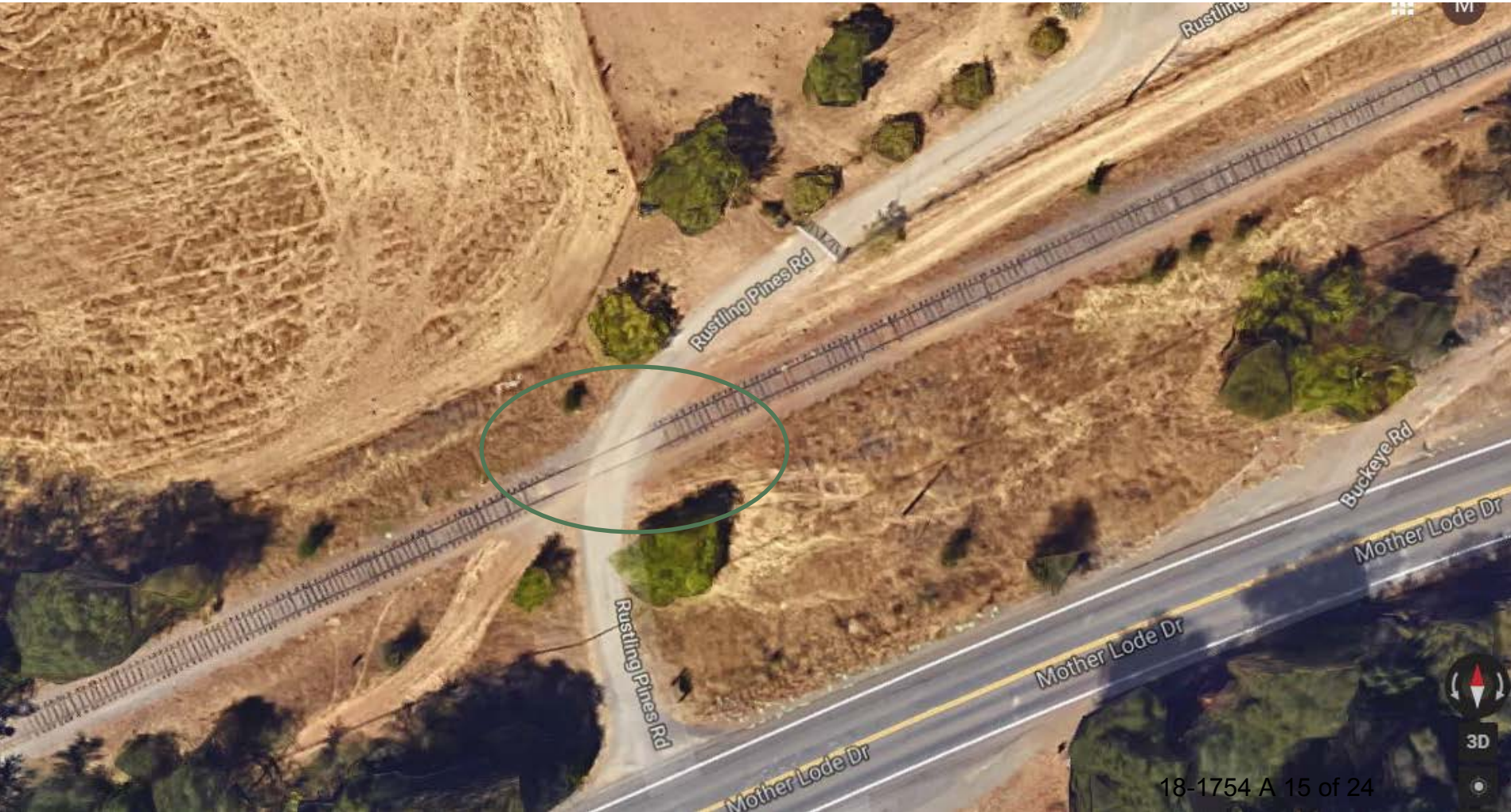




The Historic Shingle Springs Depot with tenant, Sam's Cyclery



Rustling Pines Road Crossing Repair





16

Future Plans

Railroad facilities

Track Management

Operations & Public Programming

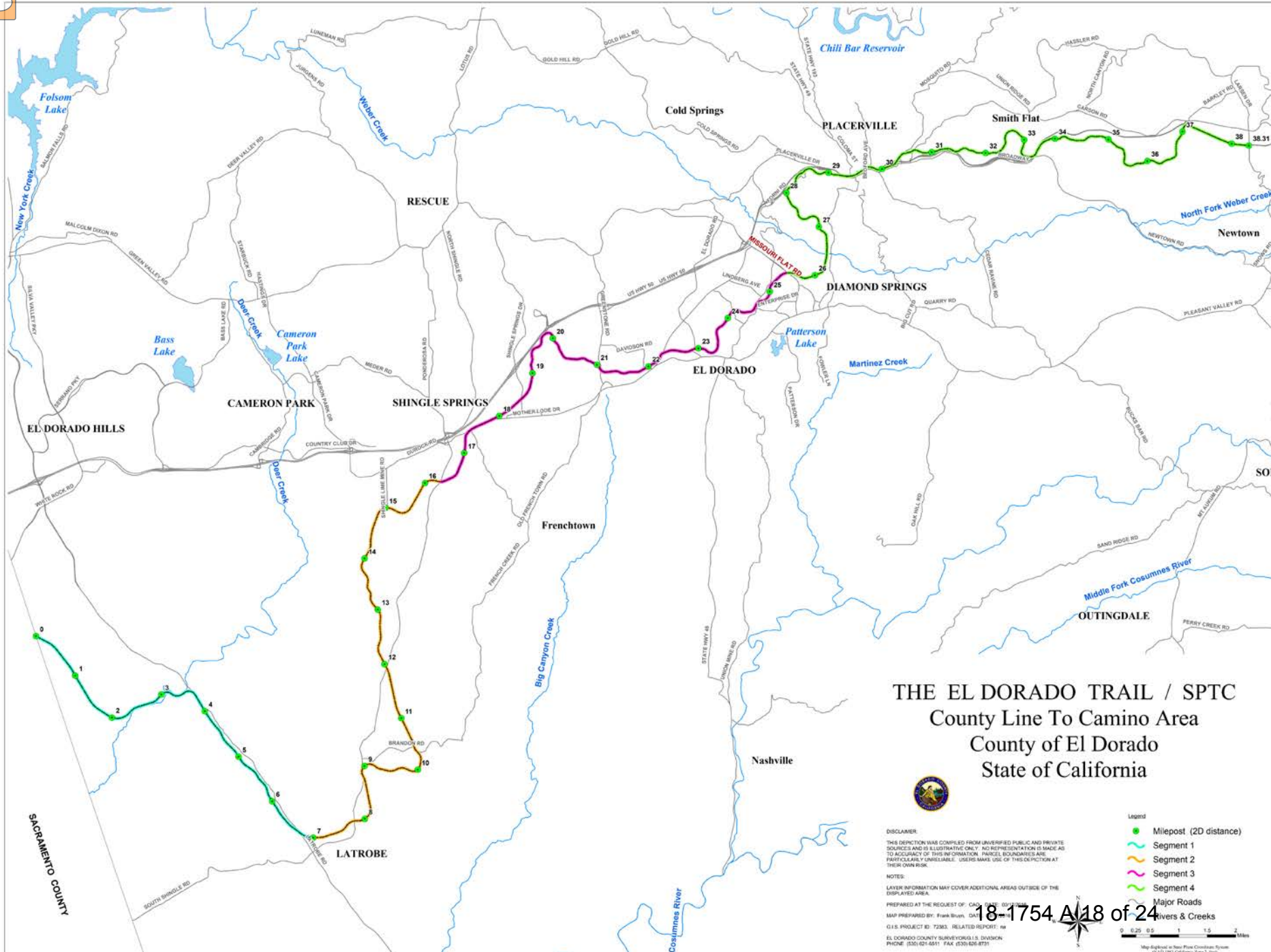
Operate full size excursion train

17

El Dorado Road – Diamond Springs

- Equipment certification
- Crew certification
- Track certification





THE EL DORADO TRAIL / SPTC

County Line To Camino Area

County of El Dorado

State of California



DISCLAIMER
 THIS DEPICTION WAS COMPILED FROM UNVERIFIED PUBLIC AND PRIVATE SOURCES AND IS ILLUSTRATIVE ONLY. NO REPRESENTATION IS MADE AS TO ACCURACY OF THIS INFORMATION. PARCEL BOUNDARIES ARE PARTICULARLY UNRELIABLE. USERS MAKE USE OF THIS DEPICTION AT THEIR OWN RISK.

NOTES:
 LAYER INFORMATION MAY COVER ADDITIONAL AREAS OUTSIDE OF THE DISPLAYED AREA.

PREPARED AT THE REQUEST OF: CALIFORNIA STATE PARKS
 MAP PREPARED BY: Frank Blum, DAT 03/2018
 G.I.S. PROJECT ID: 72363. RELATED REPORT: nr
 EL DORADO COUNTY SURVEYING & DIVISION
 PHONE: (530) 621-6511 FAX: (530) 626-8771

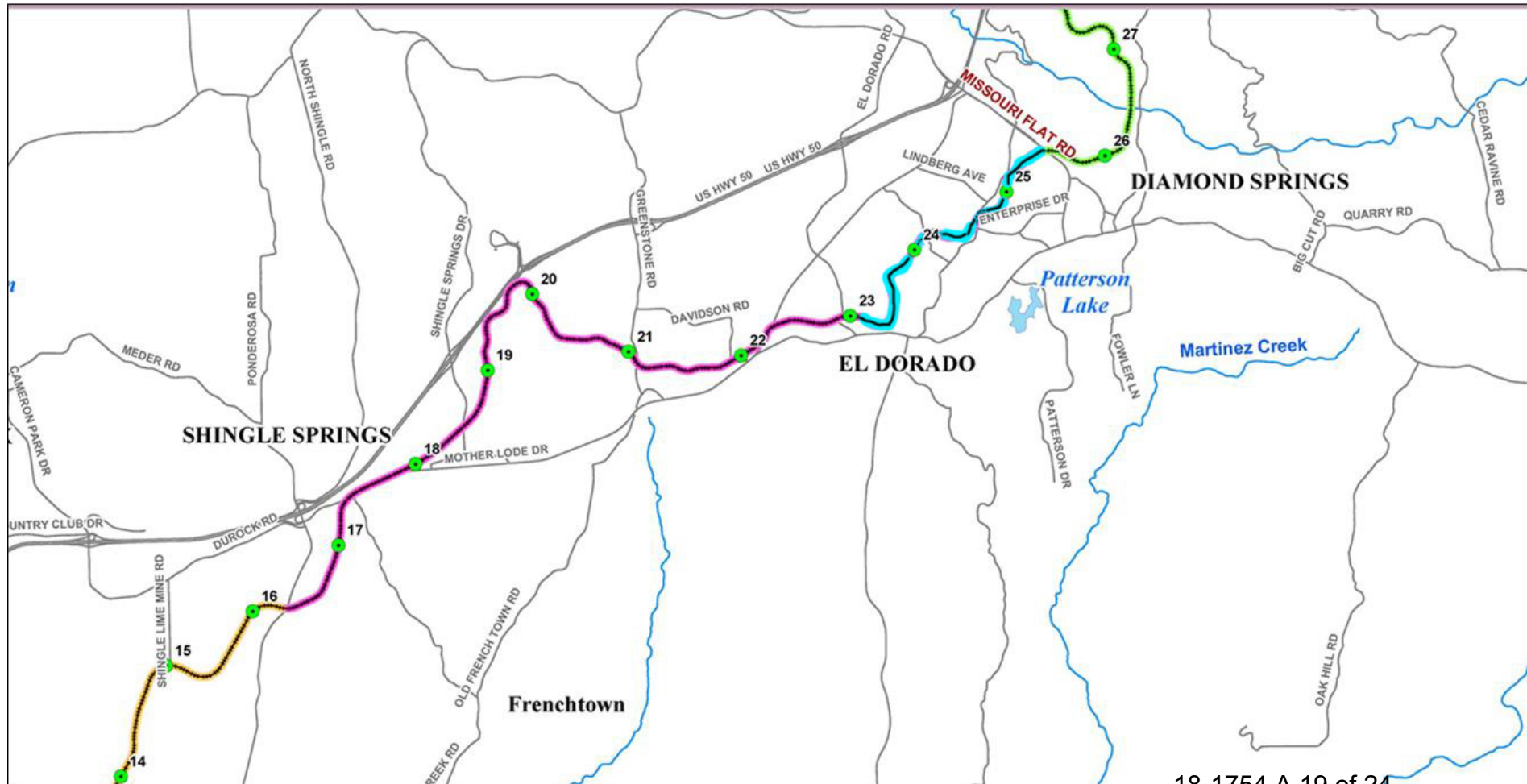
Legend

- Milepost (2D distance)
- Segment 1
- Segment 2
- Segment 3
- Segment 4
- Major Roads
- Rivers & Creeks

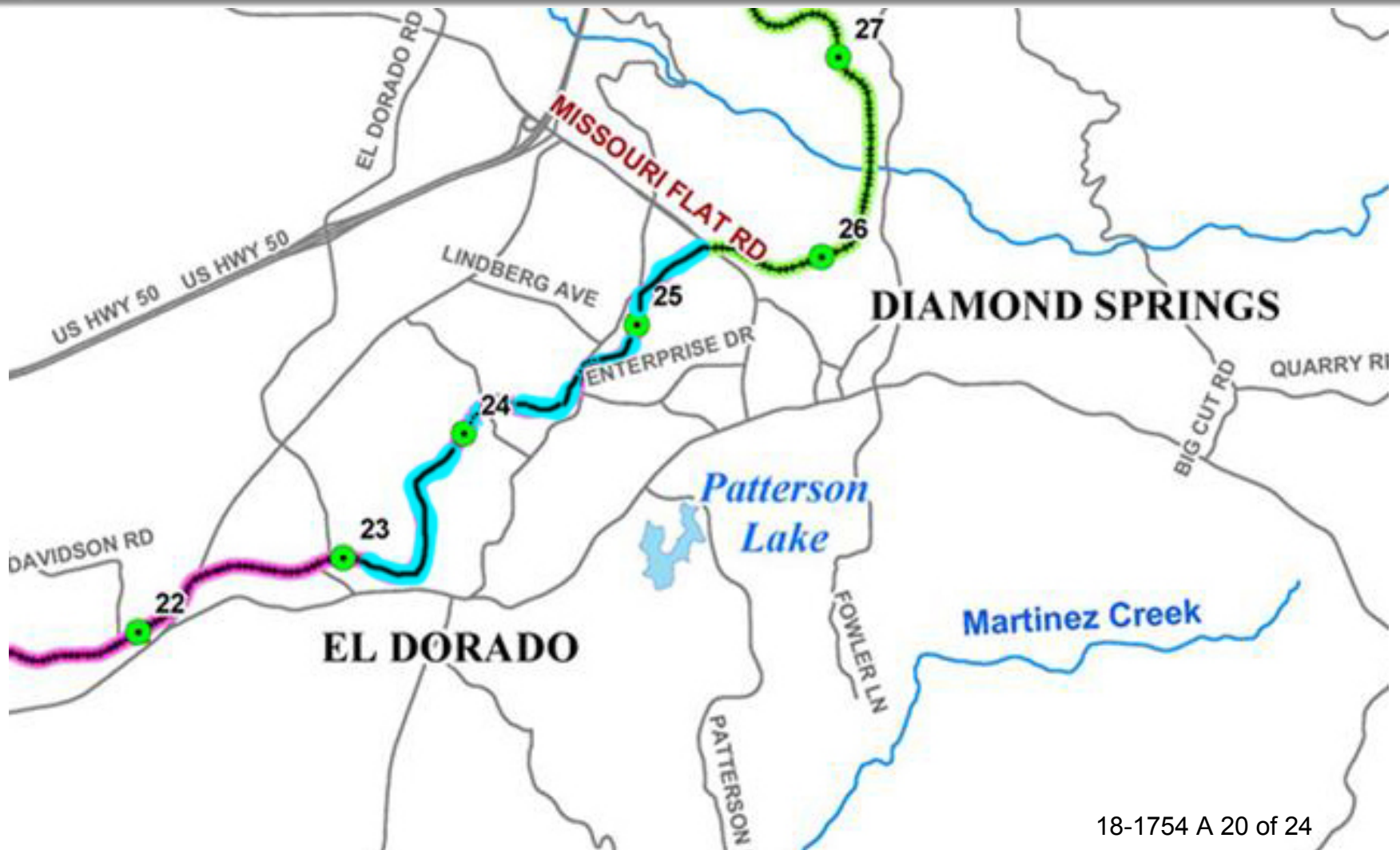
0 0.25 0.5 1 1.5 2 Miles

Map Approved as Final Plan Condition: Flynn
 (AUG 1991 California Aes 2.300)

Operate full size excursion train



Operate full size excursion train



El Dorado Western Railroad





Restore at-grade-crossing signal at Forni Rd

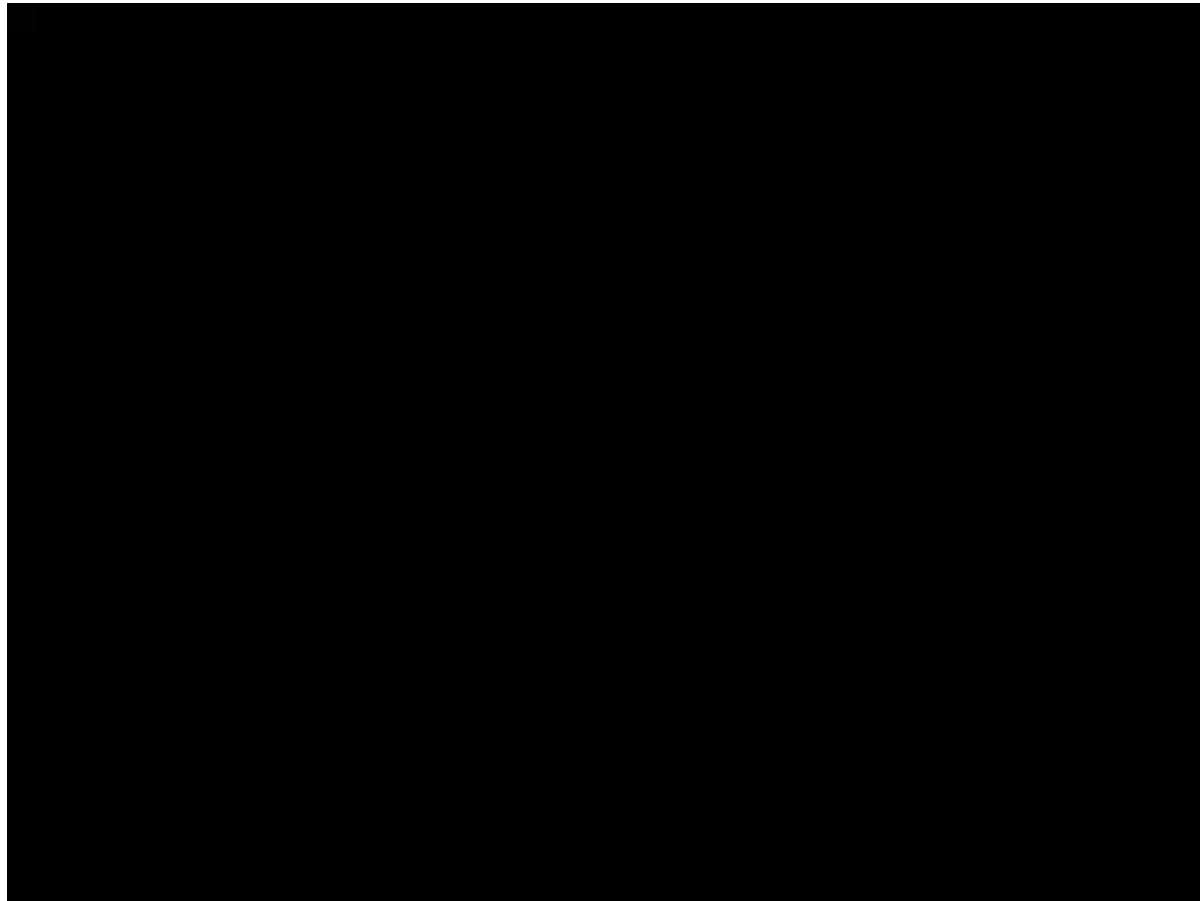
22





El Dorado Western Railroad

Kris Payne video clip





Library Department recommends to the Board of Supervisors:

24

1. Receive this report on the El Dorado Western Railroad
2. Authorize the use of standard sized rolling stock for excursion train operations and track maintenance from MP 142.5 to MP 144.5 (El Dorado Rd to Missouri Flat Rd)
3. Approve the reinstallation of At-Grade crossing signal equipment at Forni Road
4. Proceed with the Rustling Pines Road crossing improvement with cost sharing plan